



BABYZEN YOYO2 Frame User Guide

[Home](#) » [BABYZEN](#) » BABYZEN YOYO2 Frame User Guide 

Contents

- [1 BABYZEN YOYO2 Frame](#)
- [2 CARE AND MAINTENANCE](#)
- [3 HOW TO USE](#)
- [4 WARRANTY AND AFTER-SALES SERVICE](#)
- [5 Documents / Resources](#)
 - [5.1 References](#)
- [6 Related Posts](#)



BABYZEN YOYO2 Frame



IMPORTANT: Keep these instructions for future reference. Please read this instruction manual carefully before using the YOYO2 6+ stroller. Failure to follow the instructions contained in this manual may affect your child's safety.

WARNING

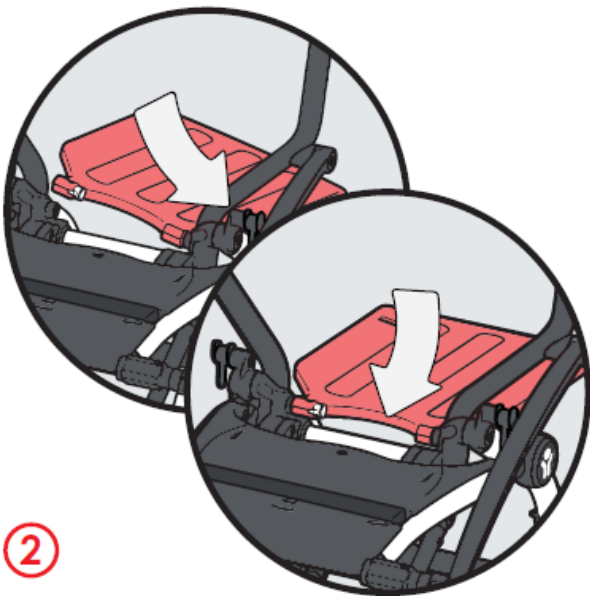
- WARNING: The YOYO2 6+ stroller has passed GB14748-2006 15 kg maximum weight requirement and is suitable for children from 6-48 months or a maximum weight 22 kg according to EN1888-2:2018.
- WARNING: This seat unit is not suitable for children under 6 months.
- WARNING: Never leave the child unattended.
- WARNING: Ensure that all the locking devices are engaged before use.
- WARNING: Always use the restraint system.
- WARNING: Always use the crotch strap of the harness in combination with the waist and shoulder belt.
- WARNING: To avoid injury ensure that your child is kept away when unfolding and folding this product.
- WARNING: Do not let the child play with this product.
- WARNING: This product is not suitable for running or skating.
- WARNING: Check that the pram body or seat unit or car seat attachment devices are correctly engaged before use

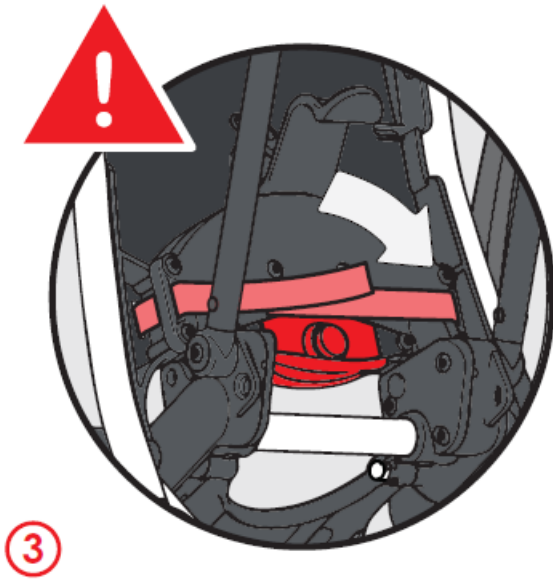
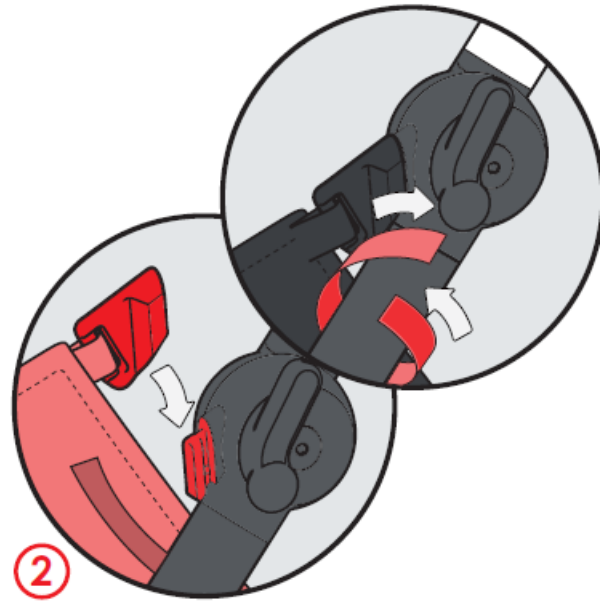
- **WARNING:** Use The tether strap to stop the stroller rolling away.
- The maximum authorized load for the shopping basket is 5 kg.
- The maximum authorized load for both the 6+ canopy pocket and the mesh pocket are 0.5 kg.
- This stroller is suitable for transporting only one child at a time.
- Do not use any accessories other than those approved or provided by BABYZEN™.
- Do not use any spare parts other than those provided by BABYZEN™.
- Hanging items or loads to the handlebar and/or on the back of the backrest and/or on the sides of the stroller, might impair its stability.
- Engage the parking brake when placing or removing the child.
- When folded, make sure the stroller is stored in a place where it does not risk to fall over a child.
- Before ascending or descending escalators or stairs, remove child from seat and fold the stroller.
- Keep the stroller away from open fire, heaters and other sources of strong heat.
- It is recommended to maintain and clean moving parts periodically in order to check correct functioning.
- Periodically make sure that locking mechanisms function properly and that they did not suffer any damage, e.g following a shock.
- When the stroller is used with a car seat, this vehicle does not replace a basket or a bed. If your child needs to sleep, they should be put in a cot or bed.
- YOYO2 stroller frame can be used with listed car seat with proper adaptor in website: babyzen.com
- YOYO2 6+ mode:
Model number: 10109 & 10104 / 10109 & 10108.

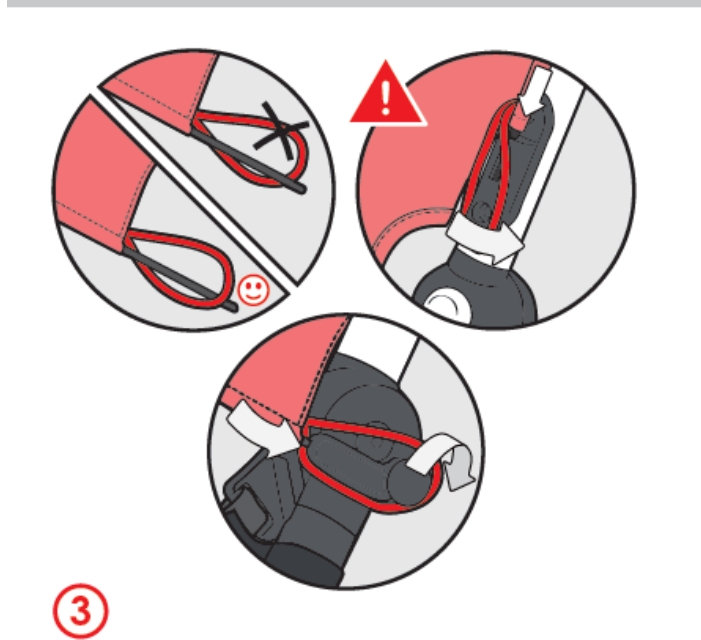
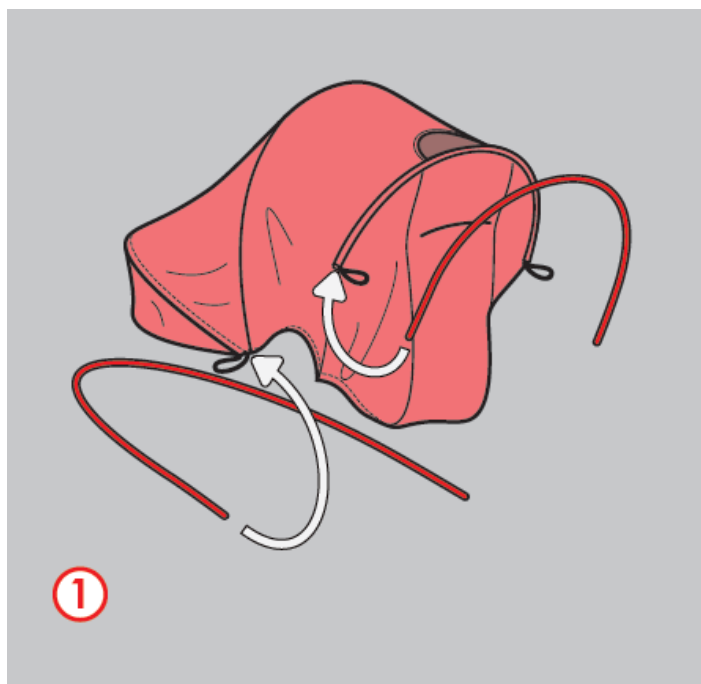
CARE AND MAINTENANCE

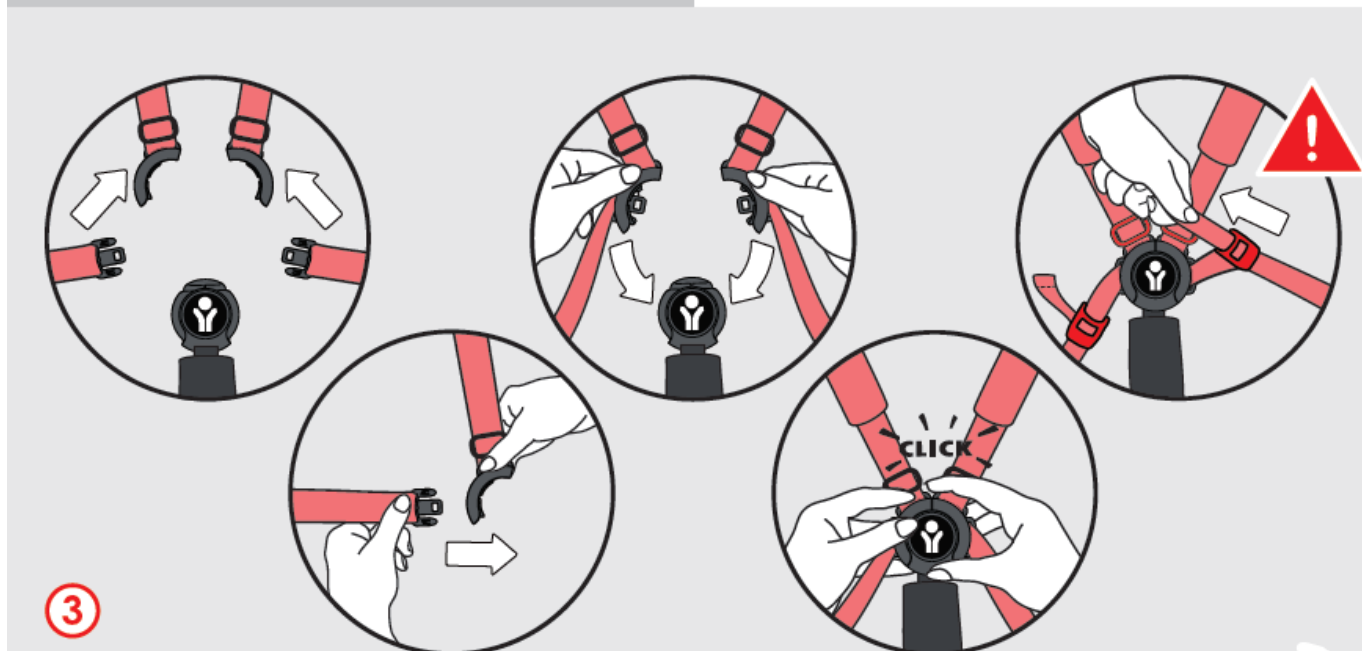
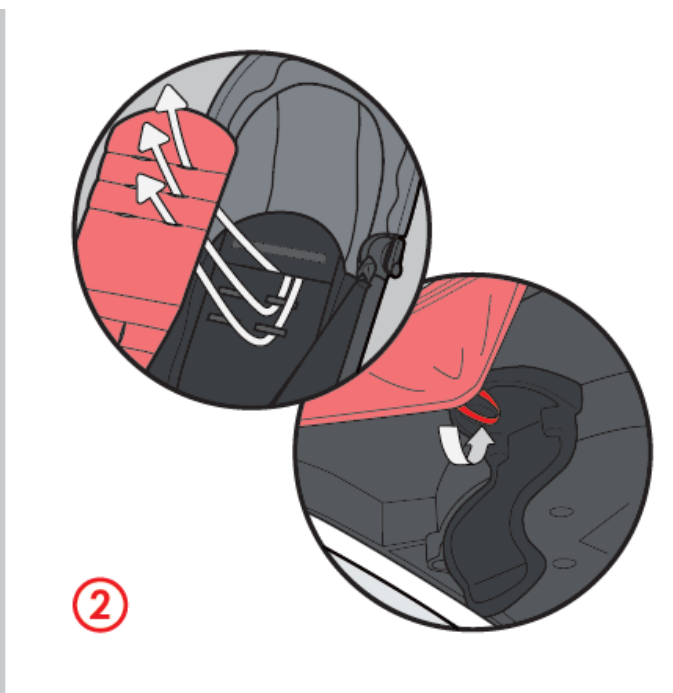
When cleaning the stroller frame, use a non-toxic, non-abrasive cleaner. Mix a solution of water with a small amount of a mild, non-toxic detergent. Apply to the stroller frame with a damp cloth. Never use strong detergents or solvents. The fabric parts may be machine washed (maximum temperature 30°C). Never use strong detergents or bleach. If you need to put your stroller in storage for any period of time, do not store in a damp or hot environment. Allow air flow around the stroller and do not stack anything on it. In case of rain, use the rain cover (sold separately). Let the stroller dry before folding it and storing it.

HOW TO USE



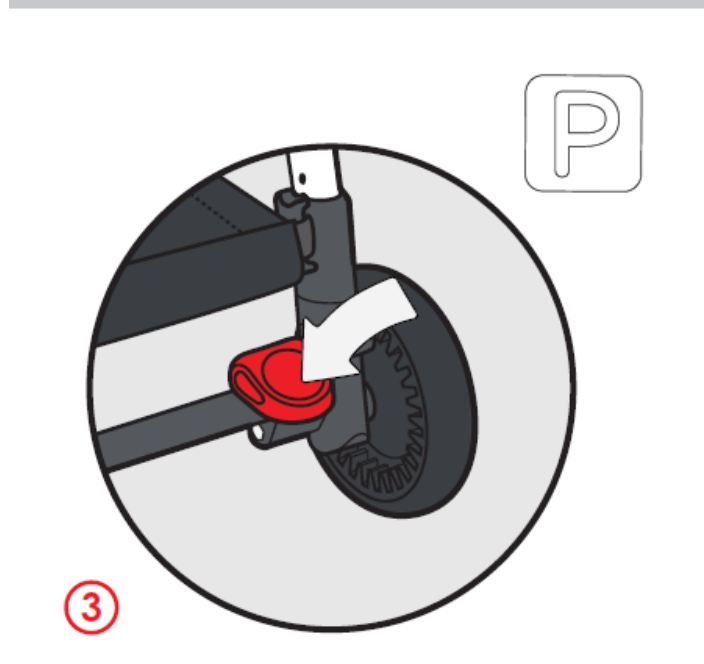
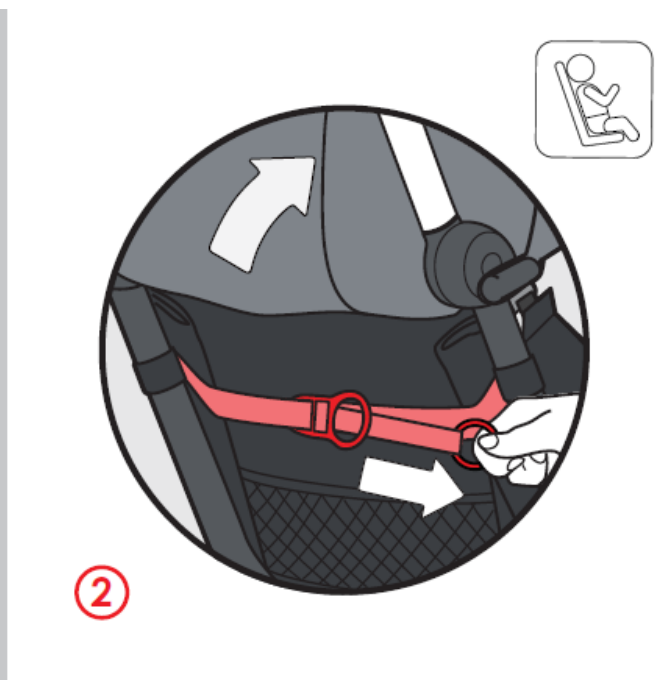
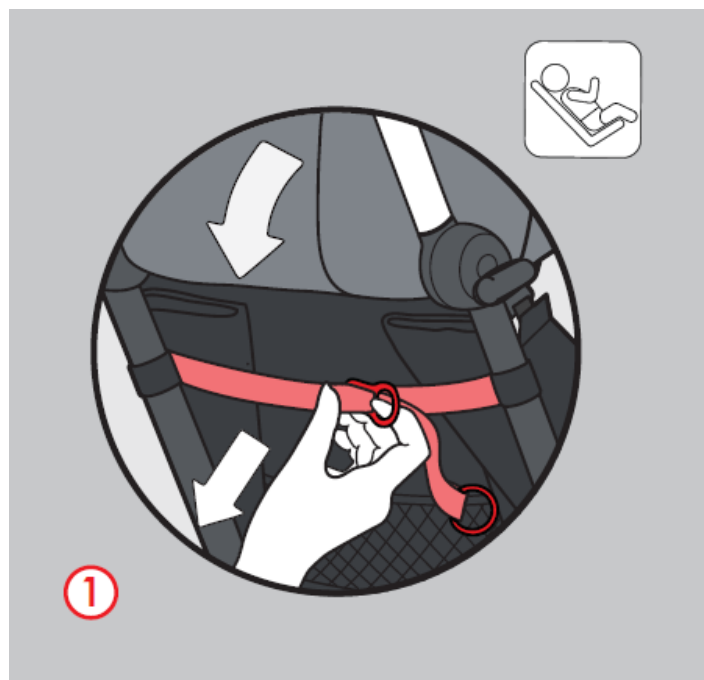


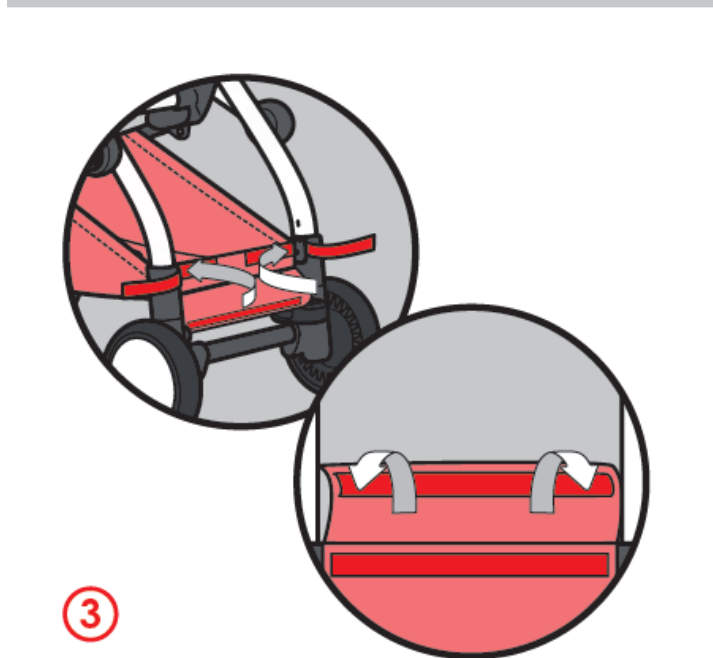
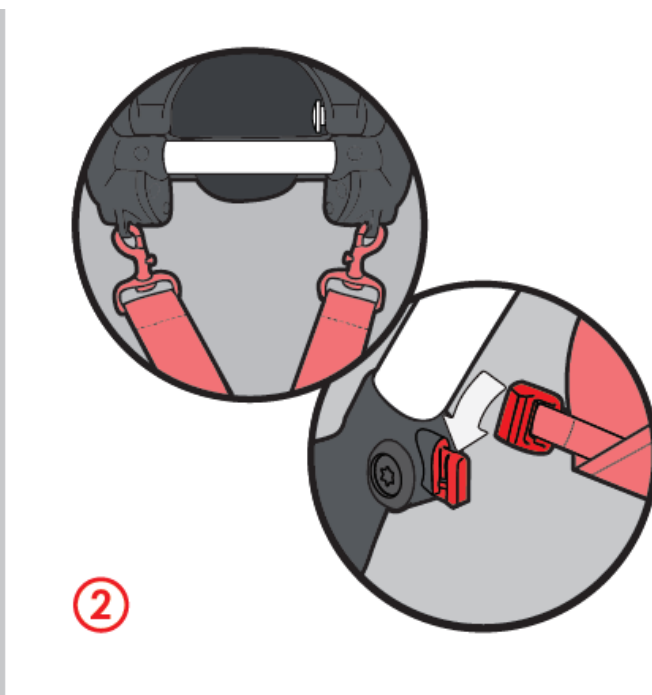
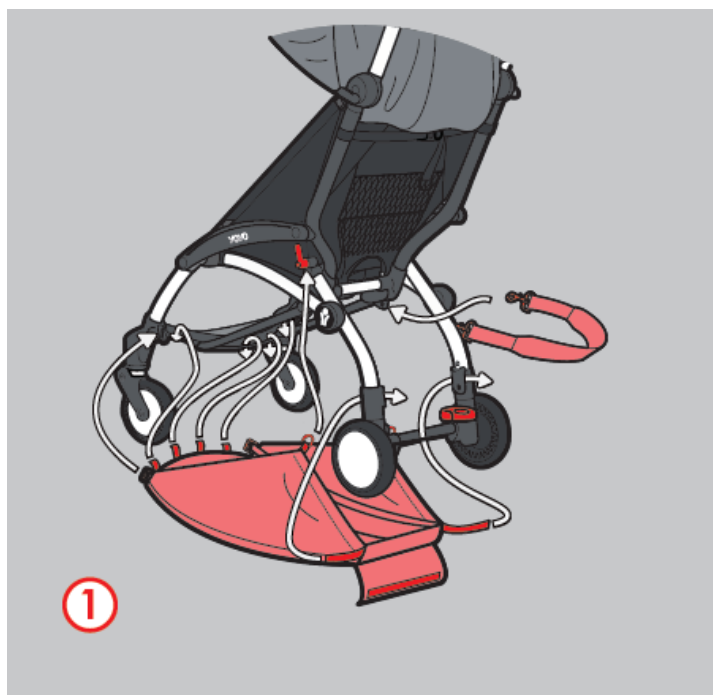














WARRANTY AND AFTER-SALES SERVICE

As a manufacturer, BABYZEN™ guarantees that with normal use, the products work without any problem for a period of two years from the date of purchase, in accordance with the instructions and technical specifications of the product. The labels affixed on the products with Serial Numbers shall not be removed, in any case. If the label of the product is removed, the warranty is no longer valid.

Warranty coverage

The manufacturer's warranty applies to all the products of the brand BABYZEN™. For the strollers, it covers:

- All manufacturing defects on the chassis, frame, and wheels.
- All the textiles pieces and harnesses of the BABYZEN™ strollers.

The BABYZEN™ warranty is limited to the replacement or repair of the defective parts, free of charge. If the repair is covered by the manufacturer's warranty, BABYZEN™ will bear the transportation costs and risk to and from the authorized retailer from whom the purchaser bought the product. Any replaced product or part, or any repaired product will be covered during the remaining time of the original product's warranty. Under the warranty,

BABYZEN™ cannot be responsible for defects in products that have not been purchased from authorized retailers (list of authorized retailers on www.babyzen.com website).


The manufacturer's warranty will not apply in the following cases:

- In case of modifications or repairs of the product without the prior written permission of BABYZEN™.
- If the defects come from negligence or an accident and/or use or maintenance not in accordance with instructions in the user guide.
- If the Serial Number of the product is damaged or removed.
- If the damages are caused by an abnormal wear of the product.
- In case of incorrect mounting or installation of parts from other manufacturers non-compatible with the product.
- In case of accidental or unintentional damage, misuse or neglect.
- In case of improper storage or maintenance of the product.
- In case of defect, damage or wear on the handlebar or textiles, resulting from normal daily use of the product.
- In case of holes or tears on the tires.
- In case of damage caused by repairs carried out by unauthorized persons, or improper disassembly of the product.



Warranty claims

The manufacturer's warranty is not transferable in any case and can only be used by the first owner of the product. BABYZEN™ has guarantee obligations only if the client can present proof of purchase mentioning the date of purchase. In case of claiming the manufacturer's warranty, the customer must report any defect to the Authorized retailer, who is the first contact in this case. Any defect must be reported by the customer to the Authorized retailer within twenty days of its discovery. Design français / Fabriqué en Chine French design / Made in China BABYZEN 2355 route des Pinchinats 13100 Aix-en-Provence – France contact@babyzen.com

Documents / Resources

	<p>BABYZEN YOYO2 Frame [pdf] User Guide YOYO2, Frame, YOYO2 Frame</p>
---	---

References

-  [BABYZEN | Home – BABYZEN International website](#)
-  [BABYZEN | Home – BABYZEN International website](#)