
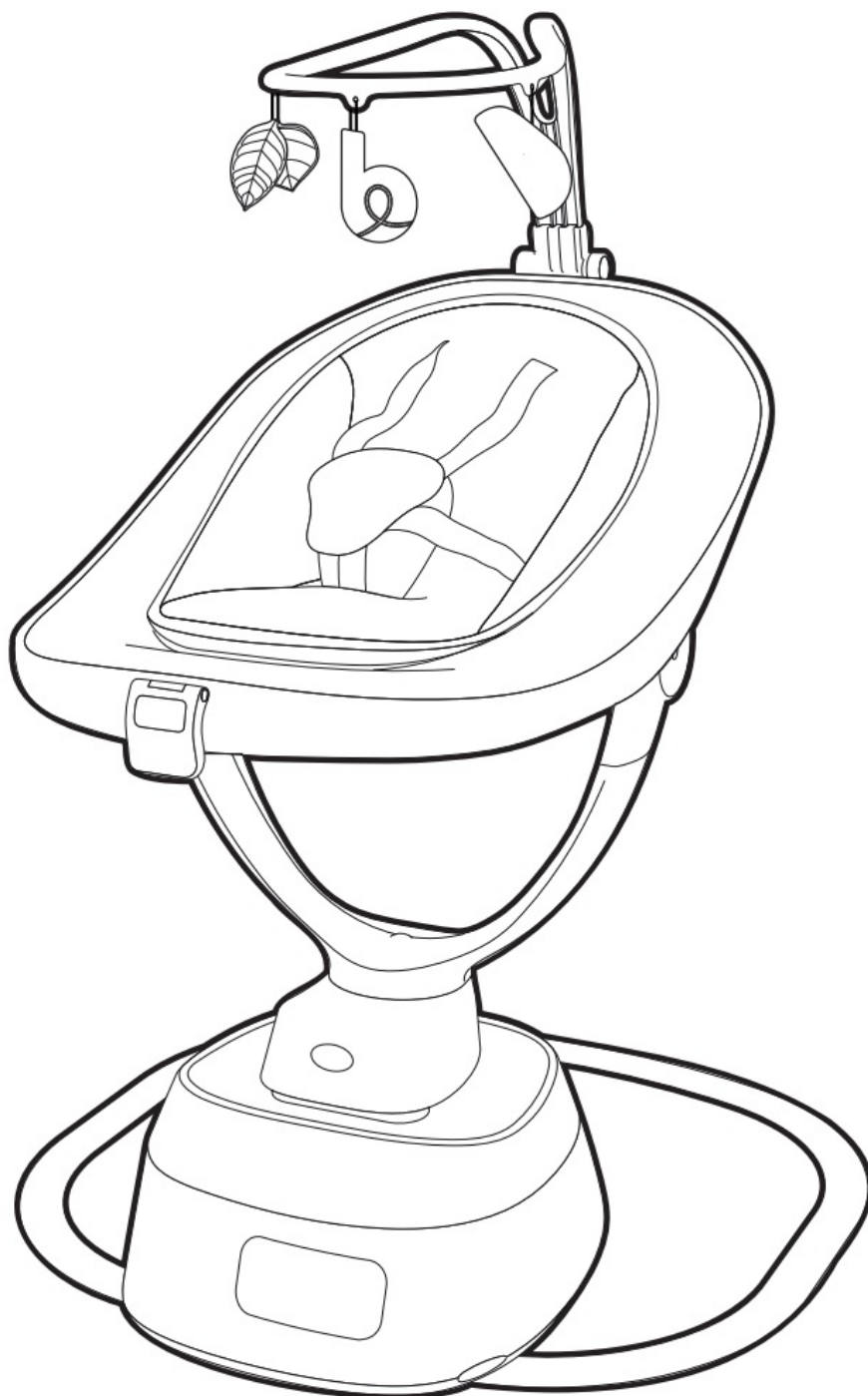




BABYMOOV A055020 6-in-1 Multi-Purpose Food Processor User Guide

[Home](#) » [babymoov](#) » BABYMOOV A055020 6-in-1 Multi-Purpose Food Processor User Guide 





Swoon Evolution
Réf. : A055020 – A055020_UK
Quick start guide

Contents

- 1 A055020 6-in-1 Multi-Purpose Food Processor**
- 2 SAFETY INSTRUCTIONS TO BE RESPECTED**
- 3 COMPOSITION\$**
- 4 Documents / Resources**
 - 4.1 References**
- 5 Related Posts**

A055020 6-in-1 Multi-Purpose Food Processor

Babymoov

Parc Industriel des Gravanches
16, rue Jacqueline Auriol
63051 Clermont-Ferrand 2 – France
www.babymoov.com

Babymoov UK Ltd

3rd Floor, East Reach House
East Reach
Taunton – TA1 3EN – England
www.babymoov.co.uk

Designed and engineered by Babymoov in France



As part of the Greenmoov initiative, we have decided to digitalise our instructions manuals to protect trees, forests and to reduce paper printing. The instructions manuals can still be consulted and downloaded via the «product support» tab on our website or via the QR code.



<https://qrco.de/bd9CbN>

IMPORTANT! READ CAREFULLY AND KEEP FOR FUTURE REFERENCE.**WARNING**

- Never leave the child unattended.
- Do not use this product once your child can sit up unaided or weighs more than 9 kg.
- This product is not intended for prolonged periods of sleeping
- Never use this product on an elevated surface (e.g. a table).
- Always use the restraint system.
- To avoid injury ensure that children are kept away when unfolding and folding this product.
- Do not let children play with this product.
- Do not move or lift this product with the baby inside it.
- The infant swing shall only be used with the recommended transformer.
- It is dangerous to use this reclined cradle on an elevated surface, e.g. a table.
- Never use the toy bar to carry the reclined cradle.
- This reclined cradle does not replace a cot or a bed. Should your child need to sleep, then it should be placed in a suitable cot or bed.
- Do not use any other type of adapter, as this could damage the swing and result in injury.
- **IMPORTANT:** before any operation make sure your cradle swing is switched off. The cradle swing can work off the mains by means of the supplied adapter.
- Insert the adapter plug in the socket designed for the purpose and the other end in the mains socket.
- Power supply units used with the swing for children should be monitored regularly in order to detect damage to

the wire, the socket, the box and other parts. Do not use the power supply unit if damaged.

- The non-rechargeable batteries must not be recharged, or else they may explode or leak.
- Different sorts of batteries must not be mixed, nor new batteries mixed with used ones.
- Respect the polarity of the batteries on insertion.
- Exhausted batteries are to be removed from the infant swing and toy.
- Keep the batteries out of the reach of children.
- Change the batteries when the cradle swing stops working satisfactorily.
- Remove the batteries before storing your cradle swing for a long period.
- Use the container for the purpose to throw the batteries away
- Replace and recharge all the batteries at the same time.
- The rechargeable batteries must be charged under the supervision of an adult.
- Do not recharge a rechargeable battery in a different charger.
- The power supply terminals must not be short-circuited.
- Do not throw the batteries on the fire as they might burst or give off noxious fumes.
- Batteries, accumulators, or rechargeable batteries are not ordinary domestic waste. They contain a large number of pollutants and dangerous materials; in addition, recycling them enables raw materials to be recovered that can be used for making new objects without exploiting natural resources! This is why they must be thrown away in compliance with a special collection and recycling cycle.
- Electric equipment is subject to a selective collection procedure.

Do not throw away electrical and electronic equipment waste with the unsorted municipal refuse, but carry out a selective collection.



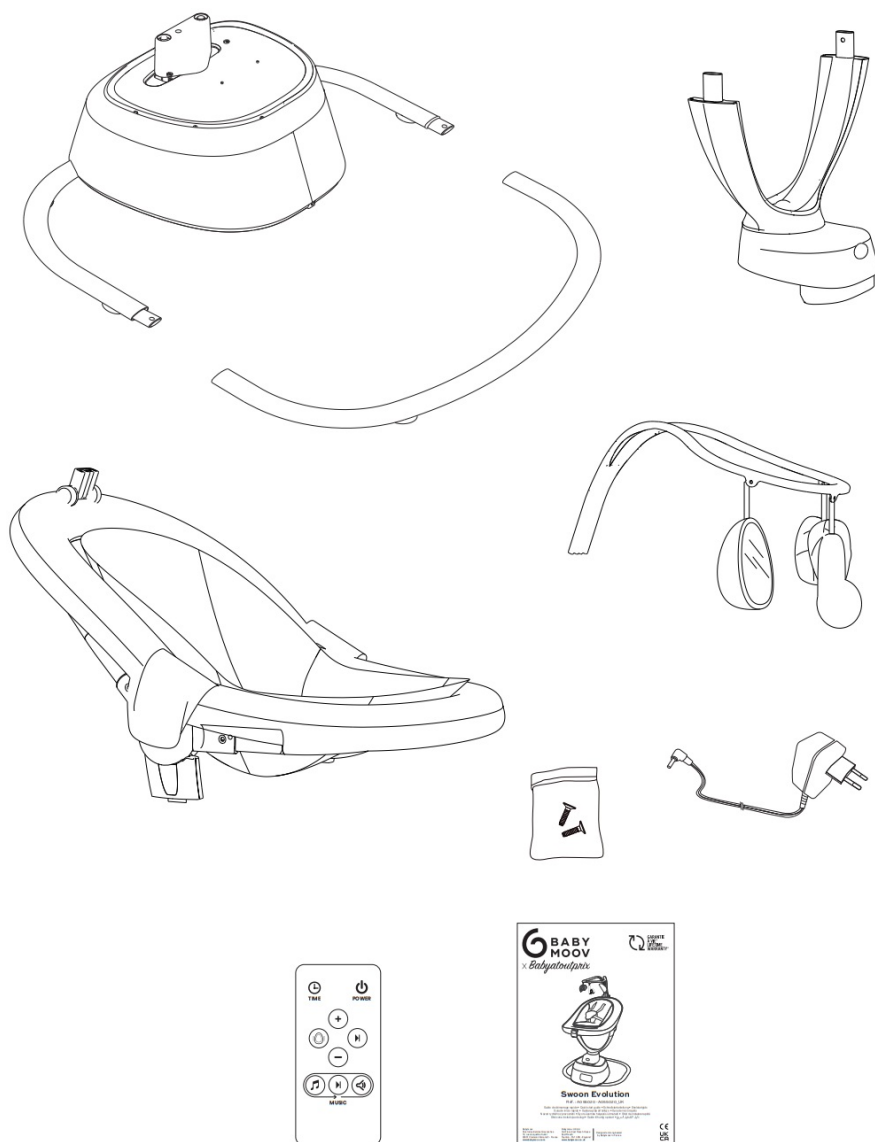
- Throughout the European Union this symbol indicates this product must not be thrown in the dustbin or mixed with domestic waste but undergo selective collection.

SAFETY INSTRUCTIONS TO BE RESPECTED

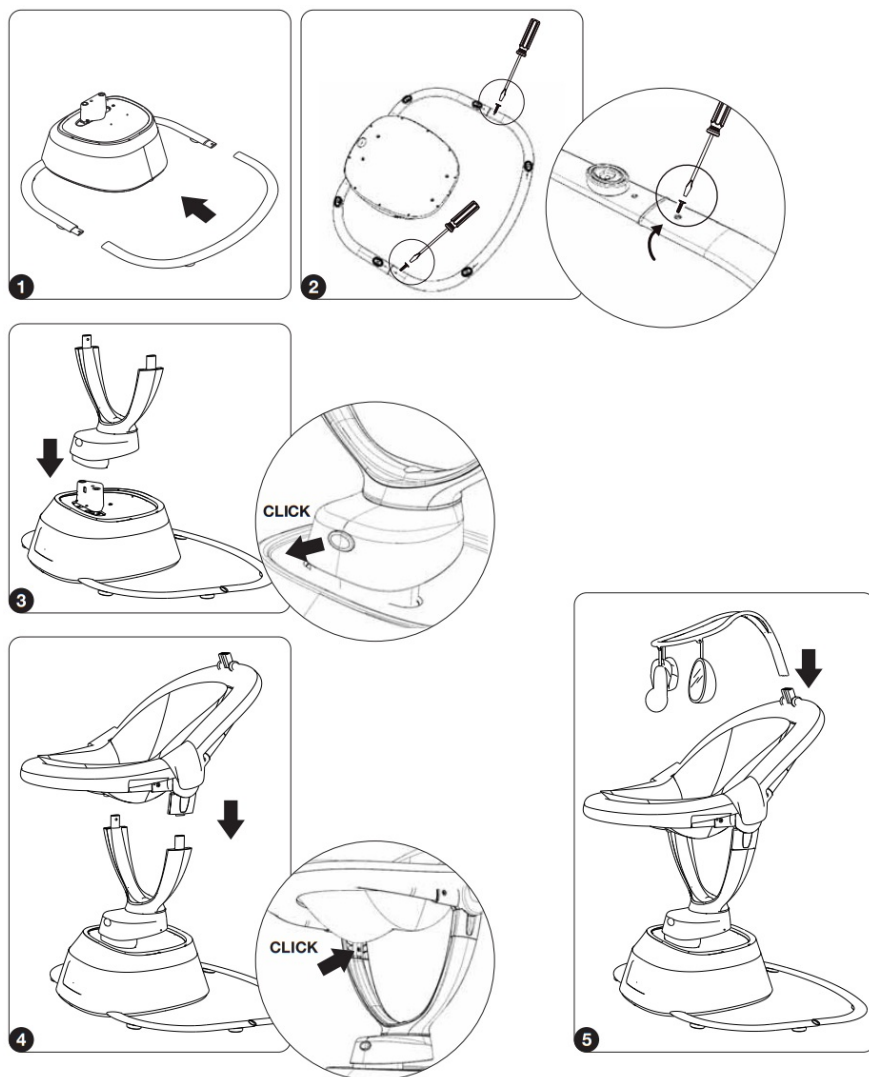
- The assembly must be carried out by an adult.
- Do not use the product if any components are broken or missing.
- Keep the small components out of reach of children.
- This product does not replace a baby basket or cot. If your child needs to sleep he should be placed in a suitable basket or cot.
- Never use accessories or spare parts other than those approved by the manufacturer.
- Before use, check the locking mechanisms are properly engaged and correctly adjusted.
- Always use the 5 point safety harness.
- Keep the cradle swing well away from any flame, sources of intense heat, electrical sockets, extensions, cookers etc or objects that may be within reach of the child.
- To avoid any risk of suffocation keep the plastic bags of the packaging out of reach of babies and young children.
- Never add a pillow, blanket, or padding; only use the pressure reducing cushion supplied with your cradle swing.
- Do not place objects with strings around the child's neck; do not hang strings from the cradle swing, and do not tie strings to the toys. Such practices may cause the baby to be strangled.
- Do not place the cradle swing next to a window where the cords of a blind or curtains could strangle the child.

- Do not attach toys other than those supplied by Babymoov
- Do not let the child play with the cradle swing.

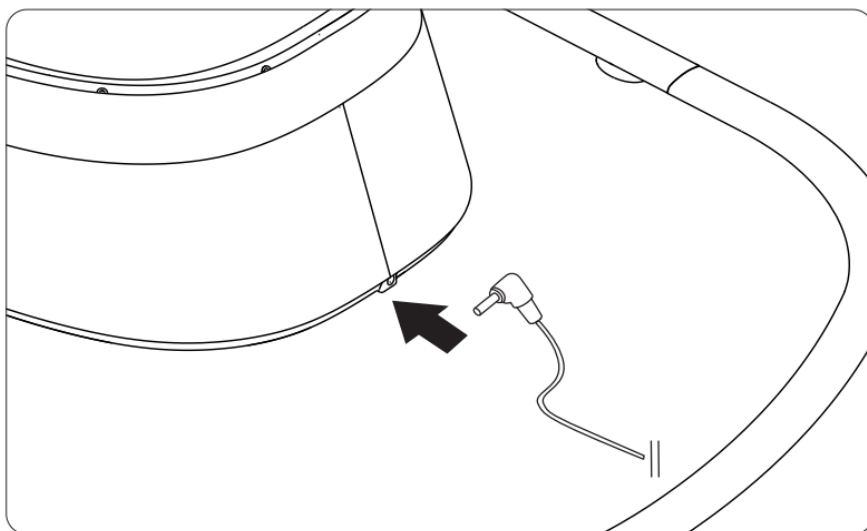
COMPOSITION\$



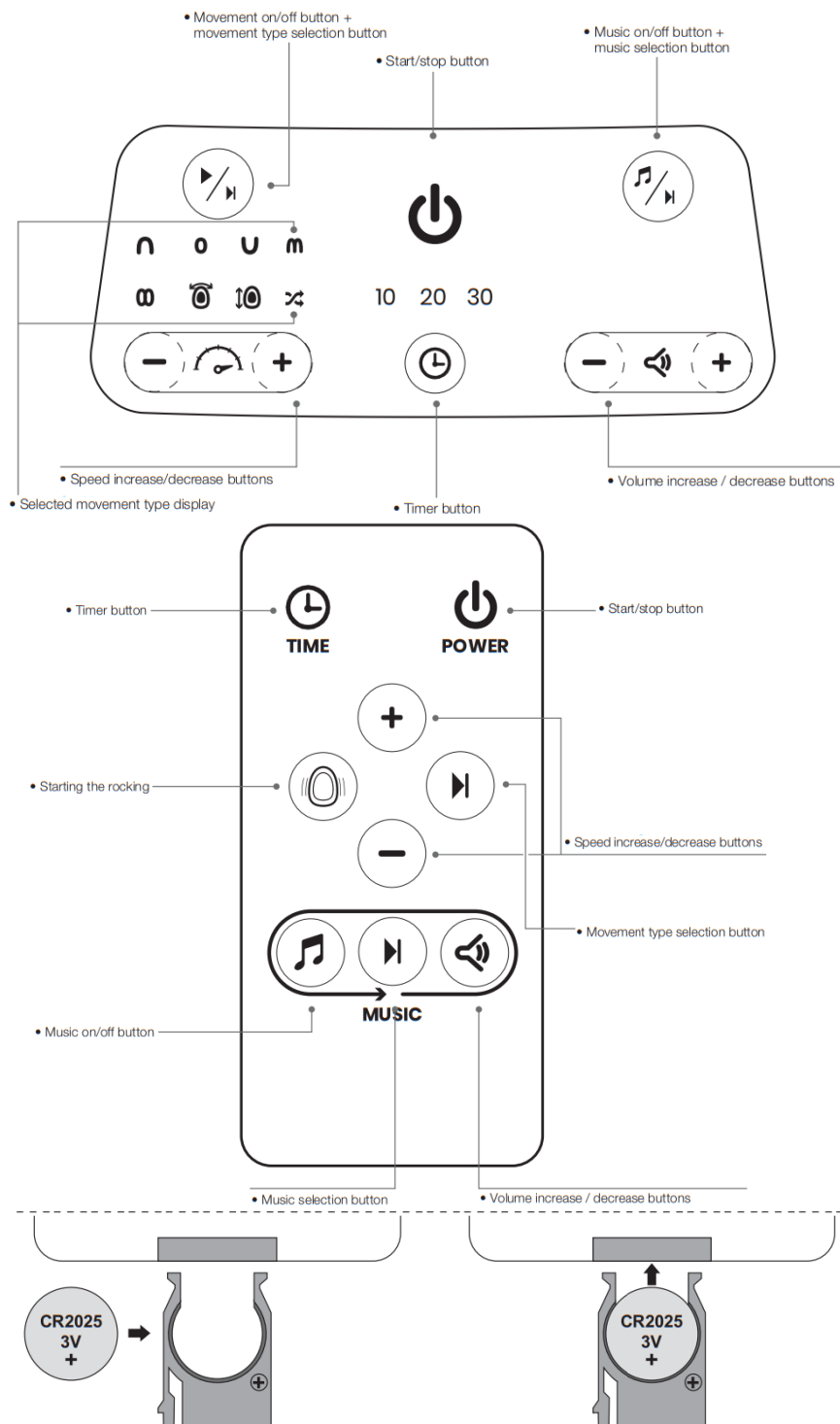
A. ASSEMBLING THE CRADLE SWING



B. CONNECTION TO THE MAINS



Insert the cable in the jack port.



C. WASHING MAINTENANCE INSTRUCTIONS PFLEGE

- Check the cradle swing frequently to make sure there are no loosened screws, worn components, torn fabric, or undone stitches.
- Replace or repair the components if necessary. Only use spare parts recommended by Babymoov.
- Excessive exposure to the sun or heat may cause the cradle's components to be discoloured or deformed.
- The newborn insert is machine washable at 30 °C, 600 RPM spin.
- The main cover can be washed by hand or in the machine on the hand-wash programme. Do not spin. To protect the fabric as much as possible, we recommend placing the cover in a laundry pouch.




* Lifetime warranty. Register within 2 months. See conditions at babymoov.co.uk.

Babymoov Parc Industriel des Gravanches 16, rue Jacqueline Auriol 63051 Clermont-Ferrand 2 – France www.babymoov.com	Babymoov UK Ltd 3rd Floor, East Reach House East Reach Taunton – TA1 3EN – England www.babymoov.co.uk
---	--

Designed and engineered by Babymoov in France



Documents / Resources

	BABYMOOV A055020 6-in-1 Multi-Purpose Food Processor [pdf] User Guide A055020 6-in-1 Multi-Purpose Food Processor, A055020, 6-in-1 Multi-Purpose Food Processor, Purpose Food Processor, Food Processor, Processor
---	--

References

- [Babymoov® – Innovative Award-Winning Baby Products](#)
- [Babymoov® – Innovative Award-Winning Baby Products](#)
- [Babymoov® : Site OFFICIEL | Produits pour Bébé](#)
- [Lifetime Warranty Map | Babymoov®](#)
- [User Manual](#)

[Manuals+](#) [Privacy Policy](#)

This website is an independent publication and is neither affiliated with nor endorsed by any of the trademark owners. The "Bluetooth®" word mark and logos are registered trademarks owned by Bluetooth SIG, Inc. The "Wi-Fi®" word mark and logos are registered trademarks owned by the Wi-Fi Alliance. Any use of these marks on this website does not imply any affiliation with or endorsement.