



12398
CLEVER
COMPOSER
TUNE
TABLE



Baby Einstein 12398 Clever Composer Tune Table Instruction Guide

[Home](#) » [baby einstein](#) » Baby Einstein 12398 Clever Composer Tune Table Instruction Guide 

Contents

- [1 Baby Einstein 12398 Clever Composer Tune Table](#)
- [2 SPECIFICATIONS](#)
- [3 IMPORTANT SAFETY INSTRUCTIONS](#)
- [4 Battery Information](#)
- [5 FEATURES](#)
- [6 FCC Statement](#)
- [7 FREQUENTLY ASKED QUESTIONS](#)
- [8 VIDEO – PRODUCT OVERVIEW](#)
- [9 References](#)
- [10 Related Posts](#)



Baby Einstein 12398 Clever Composer Tune Table



SPECIFICATIONS

Brand	Baby Einstein
Product Name	Clever Composer Tune Table
Price	\$56.99
Product Dimensions	17.5 x 16.5 x 13 inches
Item Model Number	12398
Batteries	3 AA batteries required
Material Type	Wood
Material Composition	50% wood, 50% plastic
Care Instructions	Wipe clean with damp cloth and mild soap
Item Weight	3.08 pounds

IMPORTANT SAFETY INSTRUCTIONS

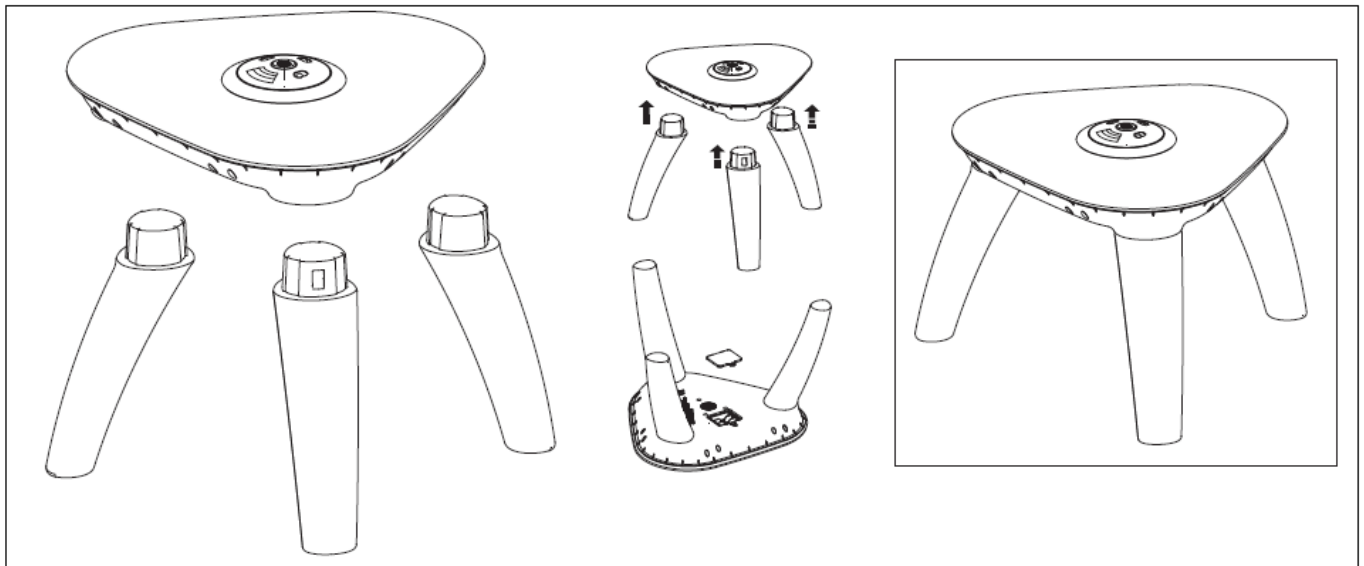
- Adult assembly is required.
- Care should be taken during unpacking and assembly.
- Examine the product frequently for damaged, missing, or loose parts.
- Use only on flat surfaces free of objects that could cause the playset to tip over.

- DO NOT use if any parts are missing, damaged, or broken.
- Contact Kids II for replacement parts and instructions if needed. Never substitute parts.

Cleaning Instructions

- Clean before use with a damp cloth and mild soap
- Air dry.
- Do not immerse in water.

Battery Information



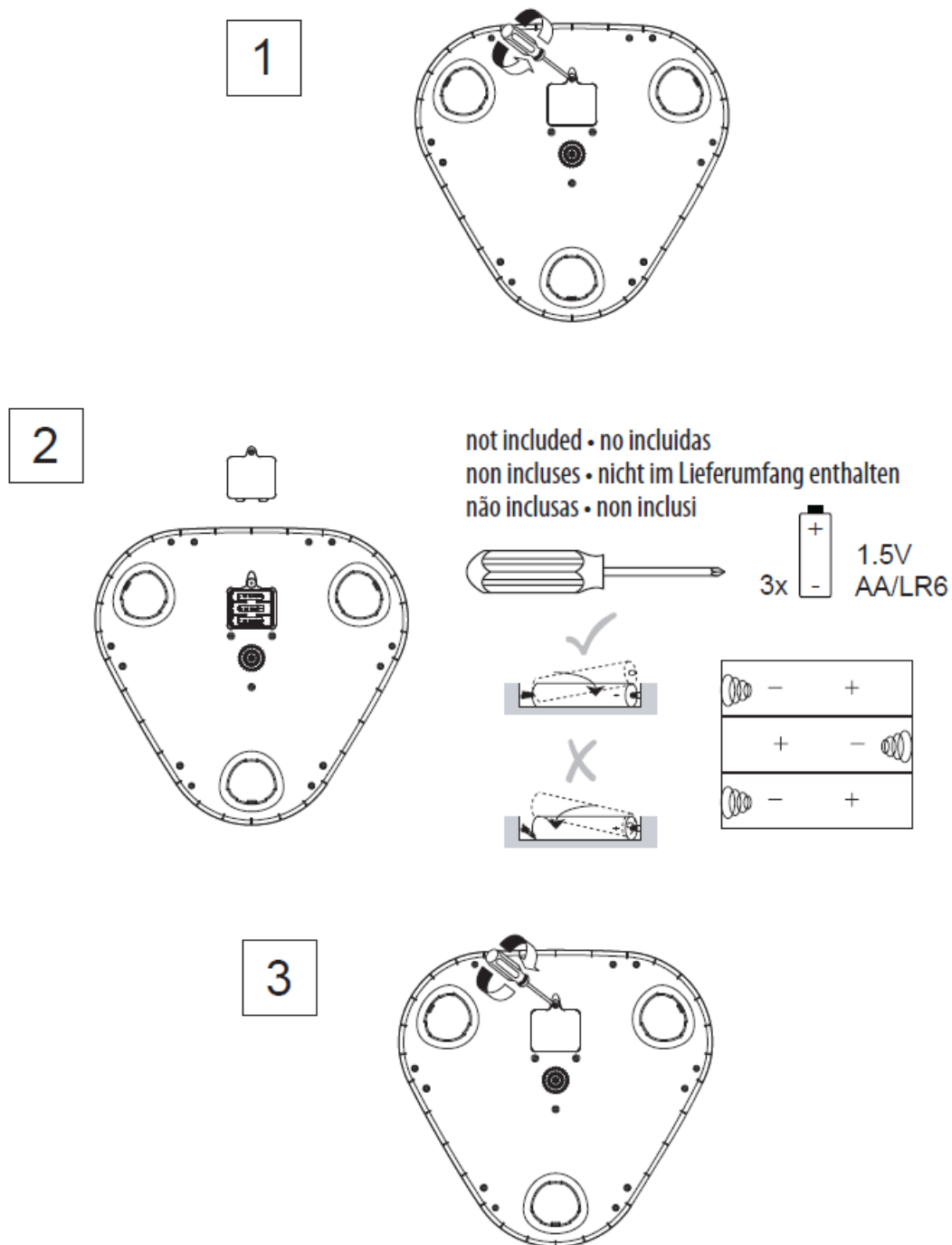
The Clever Composer Tune Table™ requires three (3) size AA/LR6 (1.5V) alkaline batteries (not included).

NOTE: The batteries included (AA/R6) are for in-store product demonstration. For best performance, promptly replace with new alkaline batteries.

⚠ CAUTION: Follow the battery guidelines in this section. Otherwise, battery life may be shortened or the batteries may leak or rupture.

- Always keep batteries away from children.
- Do not mix old and new batteries.
- Do not mix alkaline, standard, or rechargeable batteries.
- Only batteries of the same or equivalent type as recommended are to be used.
- Install the batteries so that the polarity of each one matches the markings in the battery compartment.
- Do not short-circuit the batteries.
- Do not store batteries in areas that have extreme temperatures (such as attics, garages, or automobiles).
- Remove exhausted batteries from the battery compartment.
- Never attempt to recharge a battery unless it is specifically marked “rechargeable.”
- Rechargeable batteries are to be removed from the toy before being charged.
- Rechargeable batteries are only to be charged under adult supervision.
- Do not use rechargeable alkaline batteries in a Ni-Cad or Ni-MH battery charger.
- Please use the correct disposal method for batteries.

- Remove batteries before putting the product into storage for a prolonged period of time.
- Do not dispose of products or batteries in a fire, batteries may explode or leak.



This symbol indicates that the product is not to be disposed of in household waste as batteries contain substances that can be damaging to the environment and health. Contact local authority for recycling & collection information.

FEATURES

- **Multifunctional Music Table:** Consolidates a piano, drum, and xylophone among other instruments into a single interactive play table.
- **Adjustable Volume:** This feature lets parents adjust the volume to make the sound appropriate for various settings.

- **Interactive Keys and Buttons:** By generating distinct sounds, each key and button on the table exposes kids to a range of musical notes.
- **Light-Up Keys:** When youngsters press the piano keys, they light up, appealing to their visual senses and inspiring them to play.
- **Legs that Detach:** For younger children, this can be used on the floor; for older toddlers, it can be utilized with the legs connected.
- Offering both English and Spanish modes, bilingual education aids in children's acquisition of foundational vocabulary and expressions in two languages.
- **Sturdy Construction:** Constructed from a 50% plastic and 50% wood mixture, it is meant to endure rough play.
- Parents will find it helpful as it is lightweight and simple to move from room to room thanks to its portable design.
- **Promotes Creativity:** By letting kids write their own songs, you may encourage imaginative play and creativity in kids.
- Preloaded with a selection of instructional songs that cover a wide range of topics, including counting, colors, and more.
- **Fine Motor Skills Development:** Using buttons, knobs, and sliders, children can improve their fine motor skills.
- **Engages Multiple Senses:** To provide a rich learning environment, combines touch, visual, and aural stimulus.
- **Battery Operated:** Requires three AA batteries for operation, offering prolonged playtime without requiring a power source.
- **Simple to Maintain:** The surface is easily cleaned with a moist cloth and a light soap.
- **Promotes Social Play:** The size of the table allows several kids to play together, which fosters social connection.
- Features Baby Einstein curriculum, which is renowned for emphasizing early childhood education.
- **Age-Appropriate Design:** It may be used for a variety of developmental stages and is intended for youngsters between the ages of six months and three years.
- **Safe Materials:** Constructed using materials that adhere to safety regulations and are safe for little children to use, this product is safe for usage.
- **Musical Variety:** Introduces kids to a range of musical genres and rhythms through a diverse selection of sounds and songs.
- **Vibrant and Colorful Design:** Playtime is made more interesting by the table's brilliant colors, which draw and hold a child's attention.

FCC Statement

FCC Statement / CAN ICES-3 (B) / NMB-3(B)

This device complies with Part 15 of the FCC rules. Operation is subject to the following two conditions:

1. this device may not cause harmful interference, and
2. this device must accept any interference received, including interference that may cause undesired operation.

WARNING: Changes or modifications to this unit not expressly approved by the party responsible for compliance

could void the user's authority to operate the equipment.

NOTE: This equipment has been tested and found to comply with the limits for a Class B digital device, pursuant to Part 15 of the FCC Rules. These limits are designed to provide reasonable protection against harmful interference in a residential installation. This equipment generates, uses, and can radiate radio frequency energy and, if not installed and used in accordance with the instructions, may cause harmful interference to radio communications.

However, there is no guarantee that interference will not occur in a particular installation. If this equipment does cause harmful interference to radio or television reception, which can be determined by turning the equipment off and on, the user is encouraged to try to correct the interference by one or more of the following measures:

- Reorient or relocate the receiving antenna.
- Increase the separation between the equipment and the receiver.
- Connect the equipment to an outlet on a circuit different from that to which the receiver is connected.
- Consult the dealer or an experienced radio/TV technician for help.

IMPORTANT! KEEP FOR FUTURE REFERENCE.

MANUFACTURED FOR KIDS2

©2021 KIDS2, INC. www.kids2.com/help

KIDS2, INC. ATLANTA, GA USA 30305 • 1-[800-230-8190](tel:800-230-8190)

IMPORTED BY

FREQUENTLY ASKED QUESTIONS

What is the Baby Einstein 12398 Clever Composer Tune Table?

The Baby Einstein 12398 Clever Composer Tune Table is an interactive musical toy designed for young children to explore sounds and music. It features various musical elements and activities.

What are the dimensions of the Baby Einstein 12398 Clever Composer Tune Table?

The dimensions of the Baby Einstein 12398 Clever Composer Tune Table are 17.5 x 16.5 x 13 inches.

What materials are used in the construction of the Baby Einstein 12398?

The Baby Einstein 12398 Clever Composer Tune Table is made of 50% wood and 50% plastic.

How much does the Baby Einstein 12398 Clever Composer Tune Table weigh?

The item weighs 3.08 pounds.

What is the price of the Baby Einstein 12398 Clever Composer Tune Table?

The Baby Einstein 12398 Clever Composer Tune Table is priced at \$56.99.

What type of batteries does the Baby Einstein 12398 require?

The Baby Einstein 12398 requires 3 AA batteries to operate.

How should the Baby Einstein 12398 Clever Composer Tune Table be cleaned?

The table should be wiped clean with a damp cloth and mild soap to maintain its condition.

What are the key features of the Baby Einstein 12398 Clever Composer Tune Table?

The table features various musical instruments and interactive elements that encourage musical exploration and help develop auditory skills.

What kind of music can the Baby Einstein 12398 produce?

The Baby Einstein 12398 offers a variety of sounds and melodies, helping children experience different musical notes and rhythms.

What is the material composition of the Baby Einstein 12398?

The material composition of the Baby Einstein 12398 Clever Composer Tune Table is 50% wood and 50% plastic.

Who is the manufacturer of the Baby Einstein 12398 Clever Composer Tune Table?

The Baby Einstein 12398 Clever Composer Tune Table is manufactured by Baby Einstein.

Why is my Baby Einstein 12398 Clever Composer Tune Table not turning on?

Ensure that the Baby Einstein 12398 has fresh batteries installed and that they are correctly inserted. If it still doesn't turn on, try replacing the batteries with new ones and check the battery compartment for any corrosion.

What should I do if the sound on my Baby Einstein 12398 Clever Composer Tune Table is too low or distorted?

Check the volume settings on the Baby Einstein 12398 and ensure the batteries are not running low. Low battery power can cause sound distortion or reduced volume.

Why does the Baby Einstein 12398 Clever Composer Tune Table keep shutting off during play?

This could be due to low battery power or the automatic shut-off feature designed to conserve battery life. Try replacing the batteries and see if the issue persists.

What should I do if the lights on the Baby Einstein 12398 Clever Composer Tune Table are not working?

Verify that the batteries are fully charged and correctly installed in the Baby Einstein 12398. If the lights still don't work, there could be an issue with the internal wiring, which may require professional repair.

VIDEO – PRODUCT OVERVIEW



[Download the PDF link: Baby Einstein 12398 Clever Composer Tune Table Instruction Guide Composer-Tune-Table-Instruction-Guide.mp4](#)

References

- [User Manual](#)

Manuals+. Privacy Policy

This website is an independent publication and is neither affiliated with nor endorsed by any of the trademark owners. The "Bluetooth®" word mark and logos are registered trademarks owned by Bluetooth SIG, Inc. The "Wi-Fi®" word mark and logos are registered trademarks owned by the Wi-Fi Alliance. Any use of these marks on this website does not imply any affiliation with or endorsement.