

BaBliss C1700E Hydro Fusion Anti Frizz Curl Secret



BaBliss C1700E Hydro Fusion Anti Frizz Curl Secret User Manual

[Home](#) » [BaBliss](#) » BaBliss C1700E Hydro Fusion Anti Frizz Curl Secret User Manual 

Contents

- 1 BaBliss C1700E Hydro Fusion Anti Frizz Curl Secret
- 2 Product Information
- 3 Product Usage Instructions
- 4 INSTRUCTIONS FOR USE
- 5 TEMPERATURE SETTINGS
- 6 TIME SETTINGS
- 7 AUDIO OFF SETTING
- 8 Heat Protection Mat
- 9 CLEANING & MAINTENANCE
- 10 Documents / Resources
 - 10.1 References

BaByliss®

BaBliss C1700E Hydro Fusion Anti Frizz Curl Secret



Product Information

Specifications

- **Brand:** BaByliss
- **Model:** C1700E
- **Country of Origin:** France
- **Features:** Anti-Frizz Technology, Auto Shut Off, Audio Off Setting

Product Usage Instructions

Safety Precautions

Read and follow these safety precautions carefully before using the unit:

- This appliance should only be used as described in the instruction booklet.
- Avoid direct contact of the hot surface with skin, especially eyes, ears, face, and neck.
- Do not touch the hot barrel or metal parts of the appliance when hot.

Audio Off Setting

To turn off the audio indicator:

1. Slide the timer switch to '0'.
2. No beep indicator will sound when '0' setting is selected.
3. Use extra care when using this setting as there will be no audio cue to release the styler.

Auto Shut Off

This appliance has an automatic shut off feature:

1. If the appliance is on for more than 60 minutes continuously, it will switch off automatically.
2. To continue using after auto shut off, slide the switch to '0' and then to the relevant setting to turn it back on.

Anti-Frizz Technology

The advanced moisture-balancing dual ionic system eliminates frizz and adds shine:

1. The blue LED light indicates when the ionic feature is activated.
2. Ions released may produce a slight buzzing noise.

Heat Protection Mat

Instructions for using the heat protection mat:

1. During and after styling, use the heat protection mat provided.
2. Avoid placing the appliance on heat-sensitive surfaces.
3. After use, switch off, unplug, wrap in the heat mat, and allow to cool before storing.
4. Keep out of reach of children as it remains hot for several minutes.

FAQ

- **Is the BaByliss C1700E suitable for use on hair extensions?**

No, this styler is not suitable for use on either synthetic or real hair extensions due to its high temperatures.

- **What should I do if the appliance switches off automatically after 60 minutes?**

If the appliance switches off after 60 minutes, slide the switch to '0' and then to the desired setting to continue use

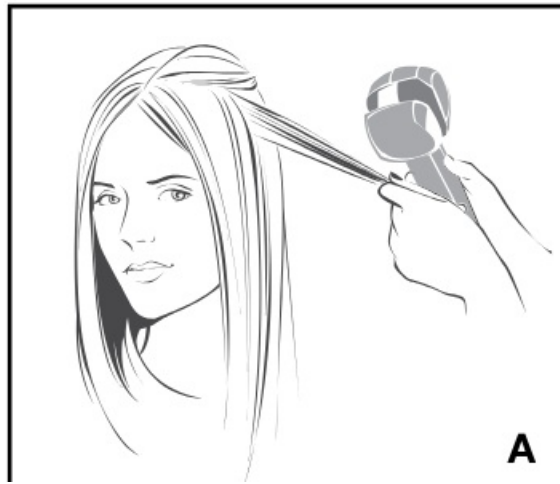
C1700E

Read these safety precautions carefully before using the unit! This appliance should only be used as described within this instruction booklet. Please retain for future reference.

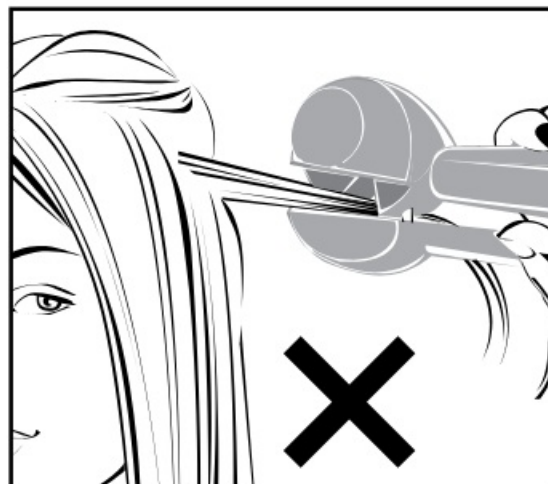
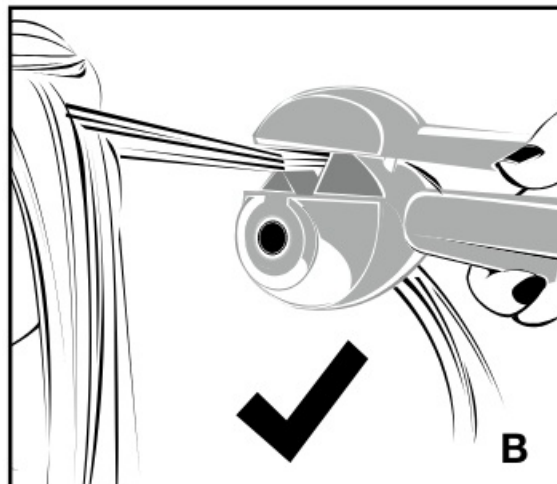
- **IMPORTANT!** This styler reaches high temperatures and is not suitable for use on either synthetic or real hair extensions.
- **WARNING!** Take care to avoid the hot surface of the appliance coming into direct contact with the skin, in particular the eyes, ears, face and neck.
- **WARNING!** Do not touch the hot barrel or metal parts of the appliance whilst hot.

INSTRUCTIONS FOR USE

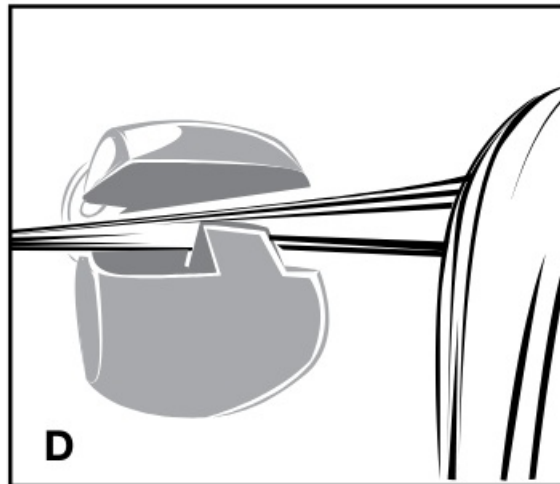
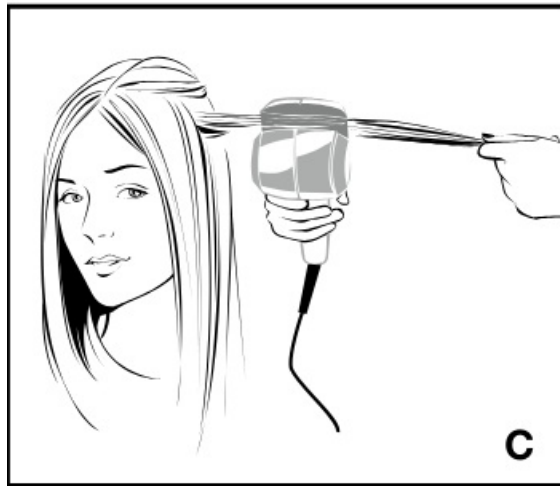
- Ensure the hair is clean, dry and free of dry shampoo, hairspray, mousse, spray wax, styling dust and all other styling products.
- Comb through to remove any tangles and divide the hair into sections of 3cm to 5cm depending on your hair type.
- Plug the styler into a suitable mains socket.
- Slide the temperature switch to the required heat setting.
- The styler is ready for use when the on indicator light has stopped flashing.
- There are 3 timer settings, choose the required setting for the hair type. Alternatively, switch the audio off to '0'.
- Select the curl direction by sliding the control switch to either position 'L', 'R' or 'A'.
- Separate a section of hair that is no bigger than 3cm (Diagram A). When working with naturally curly or longer length hair, we advise you to use even smaller sections.



- Always insert the hair into the styler with the open part of the curl chamber facing towards the head. For longer length hair, insert the hair into the styler further down the section to ensure the hair is drawn into the curl chamber efficiently.
- Please note the styler must be positioned into the hair with the open part of the curl chamber facing towards the head. (Diagram B).



- Position the styler where you want the curl to start. The hair section must be held straight, and placed neatly through the centre of the styler. (Diagram C & D).

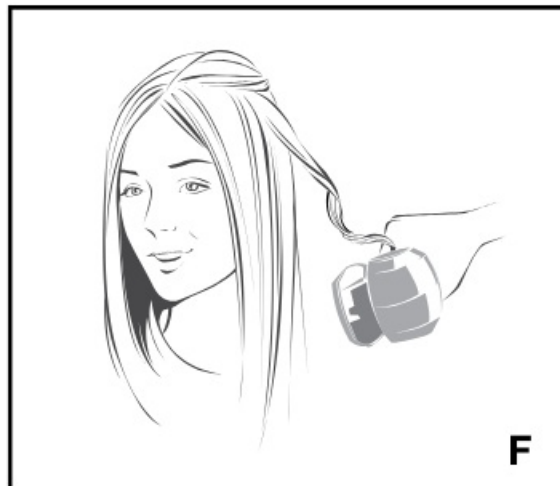


- Once the hair is in place, let go of the hair section and close the handle to allow the hair to be automatically taken into the curl chamber. (Diagram E).



- **NOTE:** If you continue to hold the hair section after closing the handle then the styler will stop and beep to indicate that you must release the tension on the hair. If you have taken too much hair, or hair is not neatly going through the centre of the appliance, the styler will again stop and beep to indicate a problem. This safety feature ensures that there will be no tangles.
- The hair is automatically drawn into the ceramic curl chamber where it is softly held and heated from all directions to effortlessly form the curl.
- If using the timer setting, the automatic beep indicator will start as soon as the handles are closed together. There will be a series of individual beeps. Hold the styler still with the handles closed together until the end of the individual beeps. There will then be four quick beeps in succession. This indicates that the time is up and you can remove the styler from the hair.

- **NOTE:** When the audio off '0' setting is selected there will be no beep indicator. There will just be a warning beep at 15 seconds.
- It is very important that you release the handles fully, and then gently pull the styler away from the head to free the hair and reveal the curl (Diagram F).



NOTE: Always release the handles first to let the curl free; if you pull away before you open the handles, the curl will be straightened out.

- To allow the curl to set, do not comb or brush the hair until it cools.
- Repeat around the head until you have the amount of curls desired.

TEMPERATURE SETTINGS

There are 3 temperature settings to select from; 190°C, 210°C and 230°C. We recommend you always start with the lowest temperature setting and increase the level of heat as required.

- • Setting I (190°C) – for delicate, fine or coloured hair
- • Setting II (210°C) – for normal textured hair
- • Setting III (230°C) – for thick or wavy hair

TIME SETTINGS

There are 3 timer settings with audio beep indicator. These different settings will give different curl effects. The longer the time the hair is held inside the curl chamber, the more defined the curl will be.

- But results will also vary according to hair type. Use the following as a guide.
- Setting 8 (8 seconds = 3 beeps) – for loose waves
- Setting 10 (10 seconds = 4 beeps) – for soft curls
- Setting 12 (12 seconds = 5 beeps) – for more defined curls
- **NOTE:** When in timer mode after the beeps finish, if the curler is kept shut, after a few moments the mains indicator will flicker and a single continuous beep will be emitted until the curl is released.

AUDIO OFF SETTING

- Slide the timer switch to '0'. When the '0' setting is selected there will be no beep indicator to advise when to release the styler. Take extra care when using this setting.

- **CURL DIRECTION SETTING (Right/Left/Auto)**

Use the Curl Direction Control to choose either a uniform or natural finish. Select the curl direction by sliding the switch to either left 'L' or right 'R'. When styling the left side of the hair, slide the curl direction switch to the left position – 'L'. When styling the right side of the hair, slide the switch to the right position – 'R'. This ensures that the curl sits towards the face on both sides of the head and will give a more uniform style. For a more natural look then select the auto setting 'A'. This will alternate the direction after each curl.

SLEEP MODE

- This appliance has an automatic sleep mode feature. If the styler is not used for more than 20 minutes the temperature will automatically drop down to around 150°C. If you wish to continue using the styler after this time, simply close then release the handles and it will return to the temperature setting you were using it on.

- **AUTO SHUT OFF**

This appliance has an automatic shut off feature for added safety. If the appliance is switched on for more than 60 minutes continuously, it will automatically switch off. If you wish to continue using the appliance after this time, simply slide the switch to '0' position and then slide to the relevant setting to turn the power on.

- **Anti-Frizz Technology**

The advanced moisture-balancing dual ionic system combines both positive and negative ions, that work together to eliminate frizz as you style. Your hair is left feeling silky and conditioned with luxurious shine.

Please note: The blue LED light within the curl chamber will illuminate to indicate the ionic feature is activated.

The release of the ions from the port may produce a slight buzzing noise.

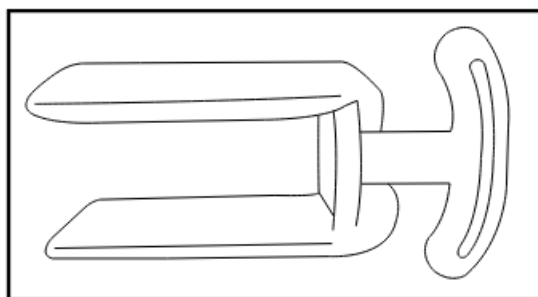
Heat Protection Mat

- This appliance comes with a heat protection mat for use during and after styling. During use do not place this appliance on any heat sensitive surface, even when using the heat mat provided. After use, switch off and unplug the appliance. Immediately wrap the appliance in the heat mat provided and allow the appliance to fully cool down before storing away. Continue to keep out of the reach of children as it will remain hot for several minutes.

CLEANING & MAINTENANCE

- It is very important that you use the cleaning tool included (Fig. 1) with your appliance to regularly clean the curl chamber. This will prevent a build up of product to ensure the curls produced are always perfectly formed.

Fig. 1



- Ensure the appliance is switched off, unplugged and cool.
- Lightly dampen the cleaning tool with warm water and mild detergent or soap. (Fig. 2)

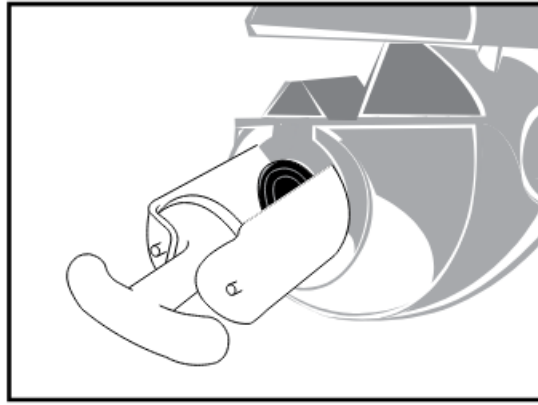


Fig. 2

- Insert the tool fully into the curl chamber cavity as per the diagrams below. (Fig. 3)

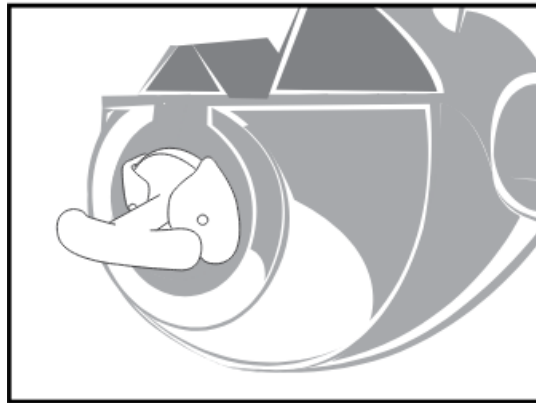


Fig. 3

- Rotate the tool around the curl chamber to remove any build-up of product. (Fig. 4)

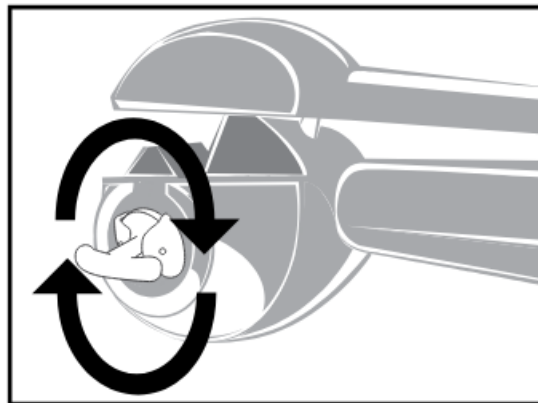


Fig. 4



Documents / Resources



[BaBliss C1700E Hydro Fusion Anti Frizz Curl Secret](#) [pdf] User Manual
C1700E, C1700E Hydro Fusion Anti Frizz Curl Secret, C1700E, Hydro Fusion Anti Frizz Curl Secret, Fusion Anti Frizz Curl Secret, Anti Frizz Curl Secret, Frizz Curl Secret, Curl Secret

References

- [User Manual](#)

Manuals+. Privacy Policy

This website is an independent publication and is neither affiliated with nor endorsed by any of the trademark owners. The "Bluetooth®" word mark and logos are registered trademarks owned by Bluetooth SIG, Inc. The "Wi-Fi®" word mark and logos are registered trademarks owned by the Wi-Fi Alliance. Any use of these marks on this website does not imply any affiliation with or endorsement.