

B-TEK AX200 Axle Scale Instruction Manual

[Home](#) » [B-TEK](#) » B-TEK AX200 Axle Scale Instruction Manual 

B-TEK AX200 Axle Scale Instruction Manual

Instruction Manual

AX200 & AX300 Axle Scales

4/19/21
V2021.1



Contents

- [1 Safety First](#)
- [2 Introduction](#)
- [3 Installation](#)
- [4 Wiring Diagram](#)
- [5 How to replace load cell in an AX200 or AX300 Scale](#)
- [6 Documents / Resources](#)
 - [6.1 References](#)
- [7 Related Posts](#)

Safety First

- Please call a BTEK authorized service provider for service or repairs on BTEK products.
- Only allow authorized personnel to work with electrical components.
- Please ensure you wear proper PPE when working with equipment.
- Ensure proper training is given when working with any equipment.
- Ensure that the area used for this equipment, is safe for this equipment.
- Allow only qualified personnel to work on electric / electronic components.

- Do not use this equipment for anything other than its intended use.
- Ensure equipment is plugged into stable power sources.
- Keep equipment away from high voltage, vibration, and high draft areas.
- Keep equipment cords and cables secured and protected.
- Perform periodic inspections to keep equipment in good working order.
- Never apply a load over the capacity of your scale.
- Keep the area around your scale free of debris.

SAFETY WARNING

Always unplug or remove power source if equipment may encounter water such as rain or area flooding. Never power equipment back up until the area and equipment are 100% confirmed dry and free of any water or moisture.

Introduction

The information provided in this manual is a guide on installing the B-TEK, LLC. Axle scales. This document is intended as a guide only, and the actual installation should be performed by qualified personnel. All sales of goods are subject to the standard warranty and the standard terms and conditions published by B-TEK, LLC. Should you have any questions regarding the AX200 or AX300 Axle scales, contact your local B-TEK, LLC. scale representative.

Specifications

AX200 Portable Axle Scales

Features and Specifications

- **Certificate of Conformance:** NON-NTEP
- **Type:** Above ground portable axle scales - optional ramps are detachable
- **Scale Capacity:** 60,000 lb. gross system capacity (30,000 lb. per platform)
- **Scale Platform Length:** 7 ft, 10 ft, 12 ft and 14 ft
- **Scale Height:** 6"
- **Scale Width:** 30"
- **Scale Deck:** 1/2" tread plate decking - welded to main beams
- **Ramp Dimensions:** 30" wide x 36" length

Finishing

- **Paint System:** Two-component Polyamide Epoxy paint
- **Steel Preparation:** Commercial blast cleaning SSPC-SP6

Load Cell

- (2) 25,000 lb. double ended shear beam per platform
- Plated alloy steel, environmentally sealed (IP67)

Junction Box

- NEMA 4X stainless enclosure and gathering card

Warranty

- 1-Year weighbridge warranty covering defects in materials and workmanship
- 1-Year load cell warranty covering defects in materials and workmanship

AX300 Axle Scale

Features and Specifications

- **Certificate of Conformance:** NON-NTEP
- **Type:** Above ground portable axle scales - optional ramps are detachable
- **Scale Capacity:** 60,000 lb gross system capacity
- **Scale Platform Length:** 7 ft and 10 ft
- **Scale Height:** 6"
- **Scale Width:** 108" and 120"
- **Scale Deck:** 1/2" tread plate decking - welded to main beams
- **Ramp Dimensions:** 108" or 120" wide x 36" length

Finishing

- **Paint System:** Two-component Polyamide Epoxy paint
- **Steel Preparation:** Commercial blast cleaning SSPC-SP6

Load Cell

- (4) 25,000 lb double-ended shear beam per platform
- Plated alloy steel, environmentally sealed (IP67)

Junction Box

- NEMA 4X stainless enclosure and gathering card

Warranty

- 1-Year weighbridge warranty covering defects in materials and workmanship
- 1-Year load cell warranty covering defects in materials and workmanship

Installation

Use the following steps to install your AX200 or AX300 Axle scale:

- Select a site.
- Check levelness and smoothness of site.
- Unpack scales and ramps.
- Anchor ramps to the scale and ground.
- Connect interconnect cable to junction box and indicator.
- Calibrate the scale base to the indicator.
- Protect vulnerable cables as needed.

Site Preparation

Avoid overloading the scale above its rated capacity, this can result in damage to the scales electronics. Select a scale location that allows a straight path to the scale to avoid binding the scale. Do not place the scale in an area that may receive or maintain water. If the scale is submersed it can also result in electronic damage. Keep the interconnect cable between the scale and the indicator it must be protected against crushing, cutting, or moisture damage. Use conduit in areas that do not allow protection of the interconnect cable. For proper placement the site surface should be within 1/4" from one end of the platform to the other.

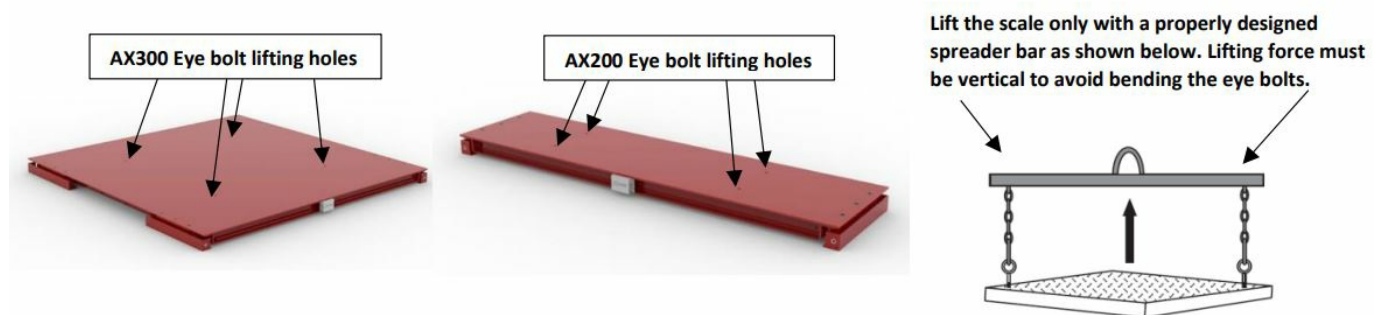
Unpacking

Remove all packing material and inspect scale for visible damage caused during shipment. Report any damages with the carrier before they leave.

Positioning

Measure out and mark the area with chalk to ensure the scales are properly located when moved into position.

Eye bolts must always be inserted into the top of the scale. Lifting should always occur with the top plate facing up and the eye bolts securely attached through the nuts welded to the bottom side of the top plate. Lifting from the bottom of the plate could cause nuts to break loose and the scale to fall.



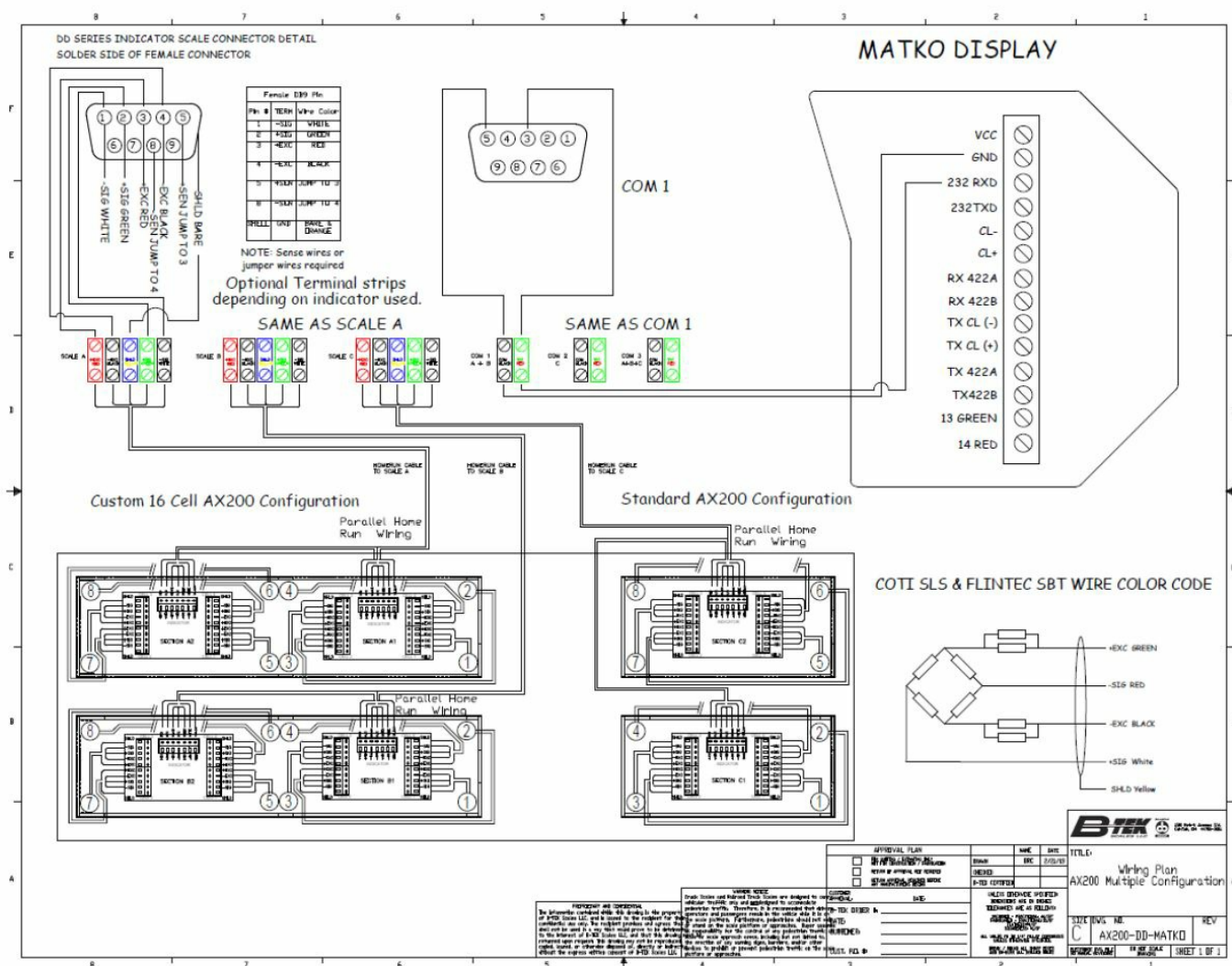
Anchoring

Once the scales are in position anchor each ramp to each end of the scale and then to the ground to secure it from movement.

Connect and Calibrate

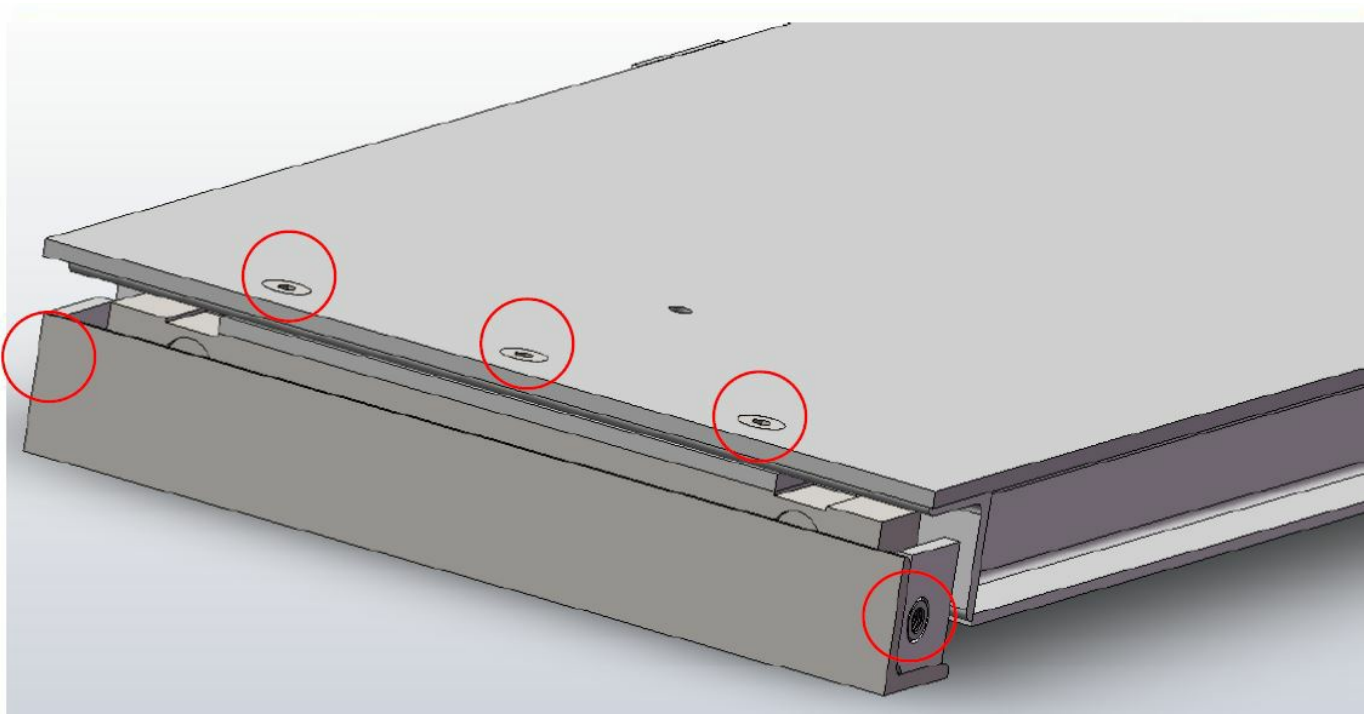
Using the diagram on the next page connect the scale to the indicator and calibrate. Before calibration ensure that all ends of the scale are firmly touching the ground and there is no end-to-end rocking. If there is any movement between end the scale will not work correctly.

Wiring Diagram

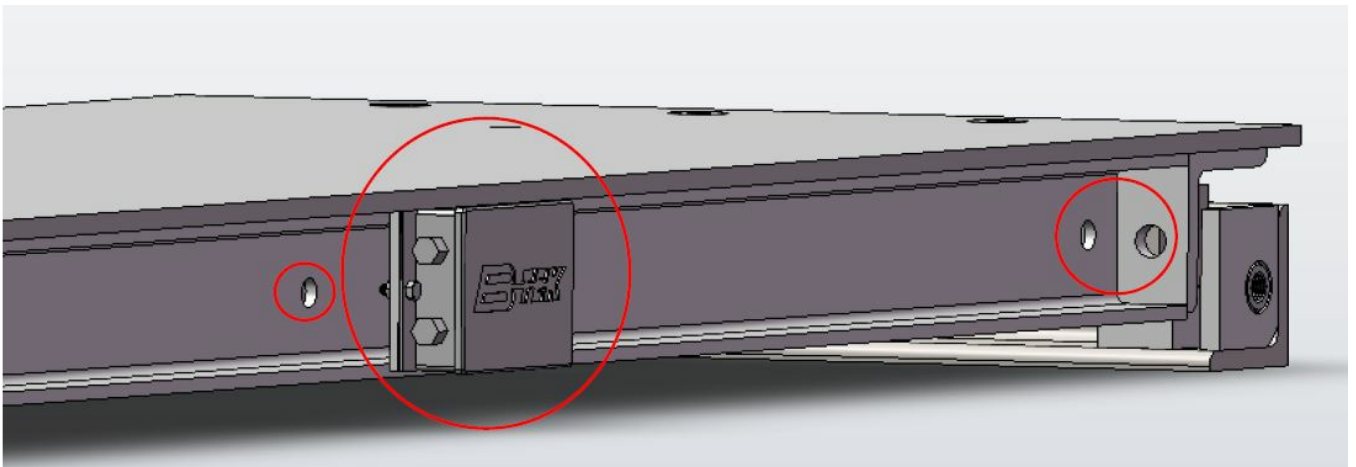


How to replace load cell in an AX200 or AX300 Scale

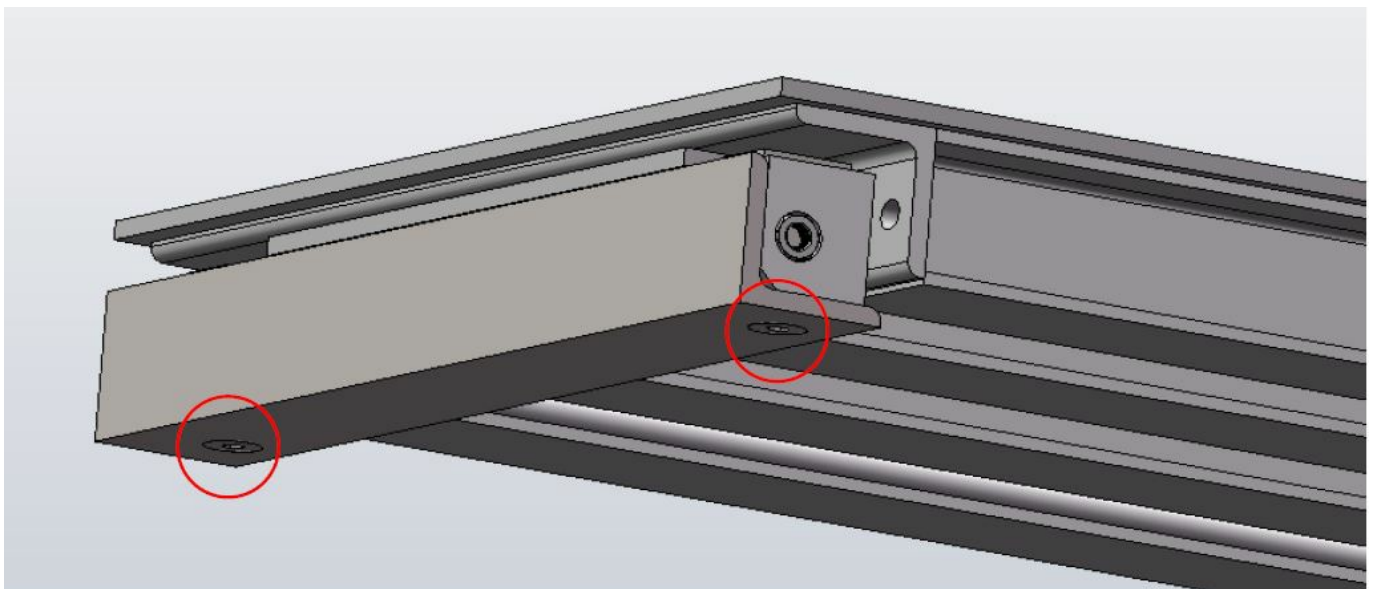
Remove two ramp alignment bolts on side of the scale, then move ramp out of the way. Remove three top load cell 3/4-10 socket head flat bolts.



Open junction box and remove load cell wiring. Pull wires through cable holes, and it is suggested to attach fishing wire while pulling out old cell cable. Will help install new load cell cable.

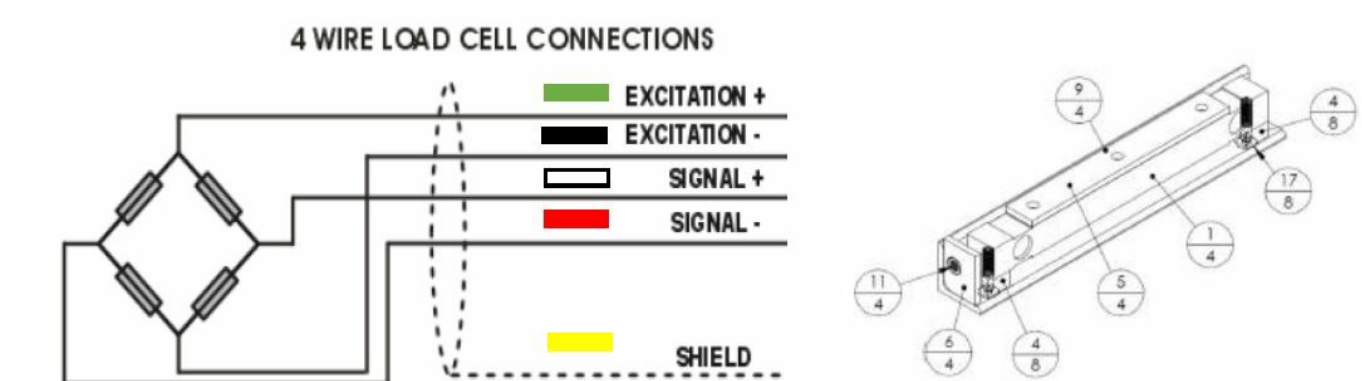


B-TEK AX200 Axle Scale Instruction Manual – Open junction box and remove load cell wiring.




Reassemble with new load cell in reverse order. Load cell Color code shown below.

COTI Load Cell Wire Color Code



B-TEK Scales, LLC 1510 Metric Ave. S.W.
Canton, OH 44706
Tel: 330.471.8900
Fax: 330.471.8909
www.B-TEK.com

Documents / Resources

 Instruction Manual AX200 & AX300 Axle Scales	B-TEK AX200 Axle Scale [pdf] Instruction Manual AX200 Axle Scale, AX200, Axle Scale, Scale
--	---

References

-  [B-TEK Truck Scales and Industrial Weighing Solutions - B-TEK](#)