



B-TECH BT8325 System 2 Adaptor Installation Guide

[Home](#) » [B-TECH](#) » B-TECH BT8325 System 2 Adaptor Installation Guide 

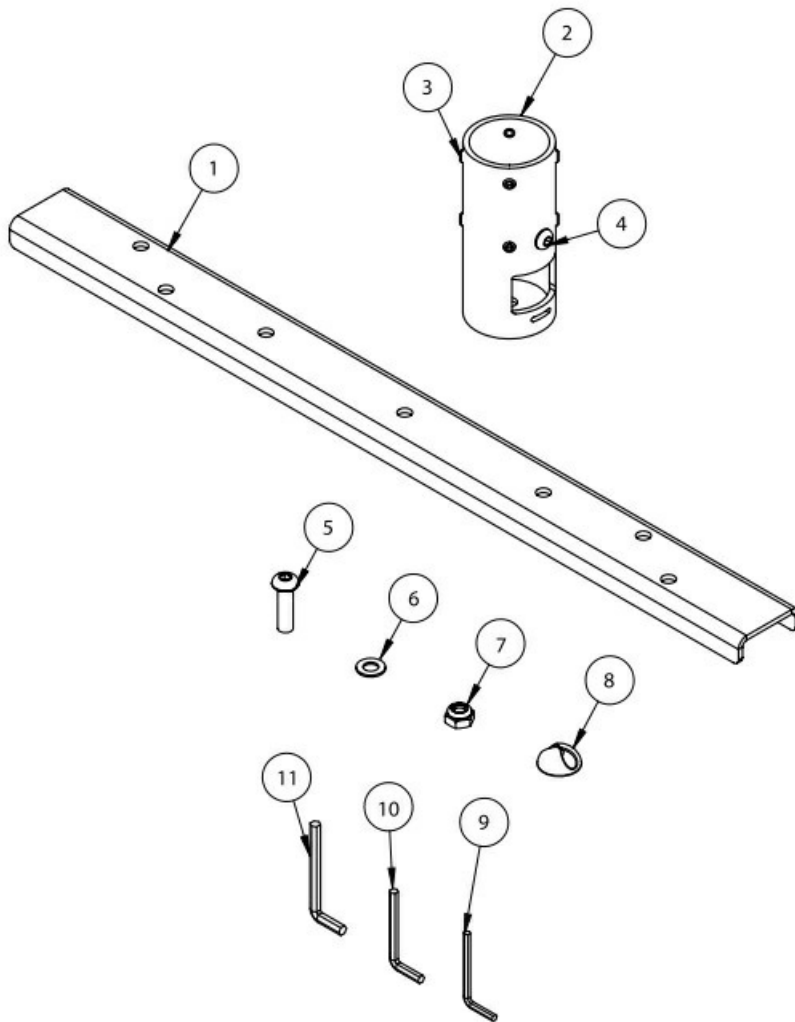
B-TECH BT8325 System 2 Adaptor Installation Guide



Contents

- [1 Parts](#)
- [2 INSTALLATION SAFETY INSTRUCTIONS](#)
- [3 INSTALLATION INSTRUCTIONS](#)
- [4 DIMENSIONS](#)
- [5 Documents / Resources](#)
- [6 Related Posts](#)

Parts



ITEM	DESCRIPTION	Qty
1	SUPPORT BAR	1
2	ADAPTOR TUBE	1
3	M8 x 6mm GRUB SCREW	8
4	M8 x 60mm SCREW	1
5	M10 x 35mm SCREW	1
6	M10WASHER	1
7	MIONYLOCNUT	1
8	CABLECLIP	4
9	4AFHEXKEY	1
10	SAFHEXKEY	1
11	6AF HEX KEY	1

INSTALLATION SAFETY INSTRUCTIONS



CAUTION * This product is intended for use only with the maximum weights indicated. Use with equipment

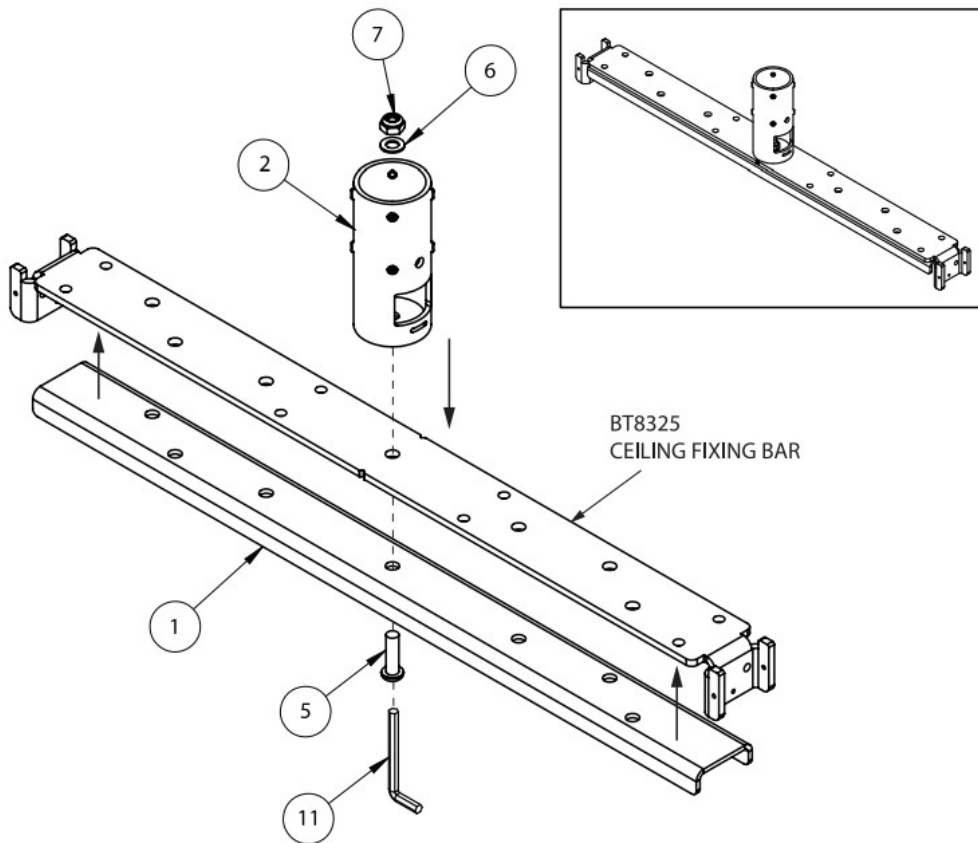
heavier than the maximum indicated may result in instability causing possible injury.

B-Tech AV Mounts, its distributors and dealers are not responsible for damage or injury caused by improper installation, improper use, modifications, installations over the specified weight capacity and/or failure to observe these safety instructions. In such cases, any warranty will expire. It is recommended that this product should only be installed by a qualified professional / installer. B-Tech AV Mounts does not claim any liability for any difficulties that may arise from the interpretation contained in these instructions. Failure to mount this product correctly may lead to serious injury and/or death. Please check carefully to make sure there are no missing or defective parts – defective parts must never be used. In the event of missing and/or defective parts, or technical questions, please contact an authorised dealer. Pay careful attention to where this product is located, some locations are not suitable for installation. Check load capacity of the ceiling prior to installation to ensure that it can support the combined weight of the equipment and hardware, some surfaces are not suitable for installation. For indoor use only. It is recommended that periodic inspections of the product are made as frequently as possible to ensure that safety is maintained. Please keep these instructions for future reference.

INSTALLATION INSTRUCTIONS

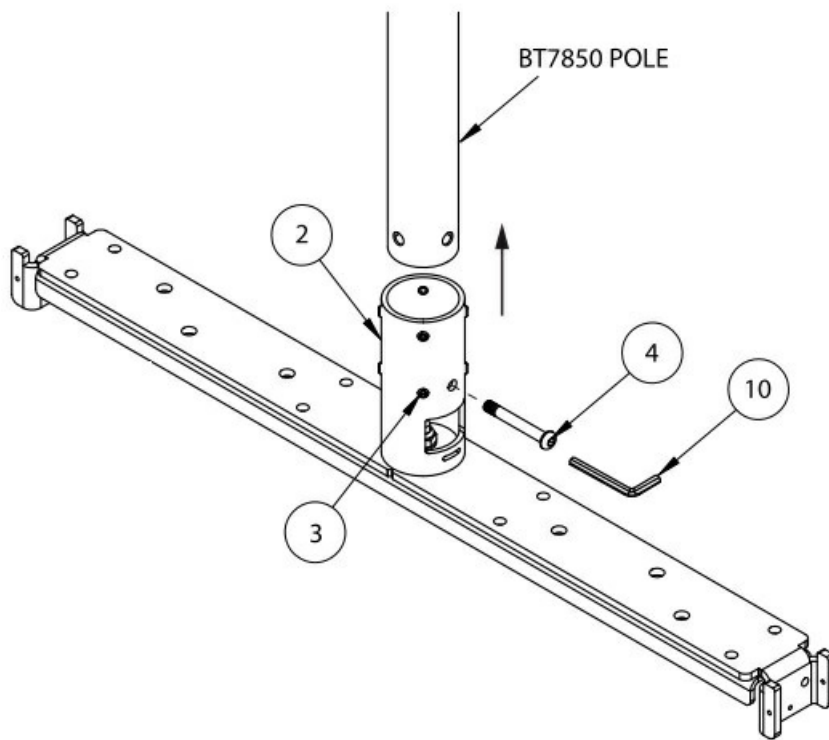
ATTACH SUPPORT BAR TO THE BT8325 CEILING FIXING BAR

Fix items 1 & 2 to the BT8325 ceiling fixing bar using items 5, 6 & 7.



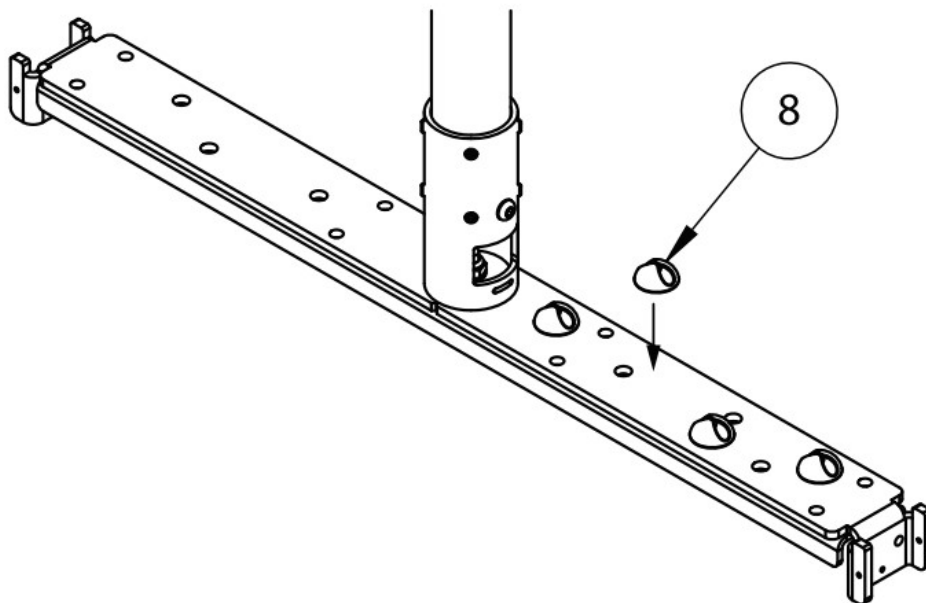
ATTACH ADAPTOR TO A SYSTEM 2 POLE

1. i. Fix item 2 to a @50mm pole and secure 817850 POLE in place using item 4.
2. Tighten item 3 on item 2 using item 9.



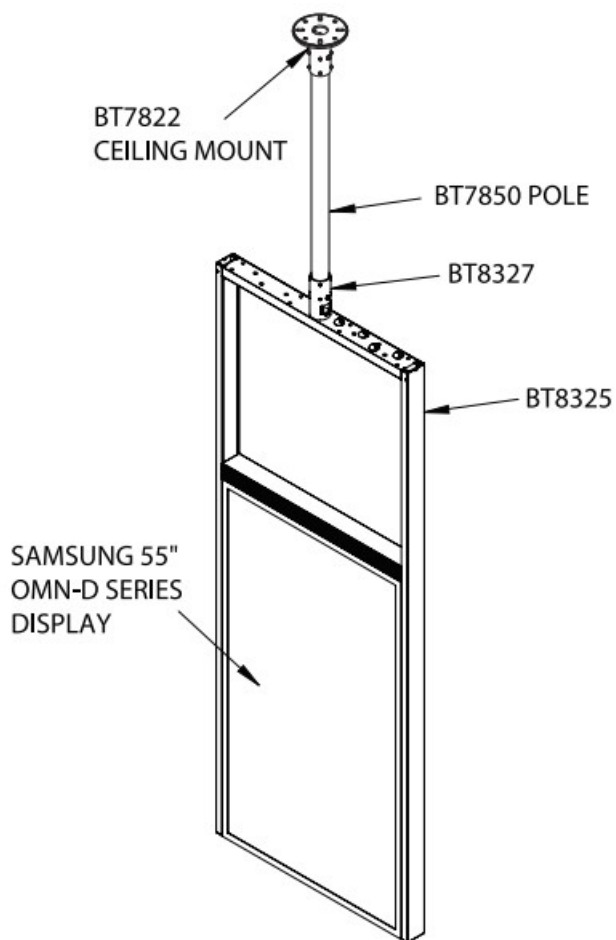
CABLE MANAGEMENT

Stick item 8 on to the ceiling fixing plate.



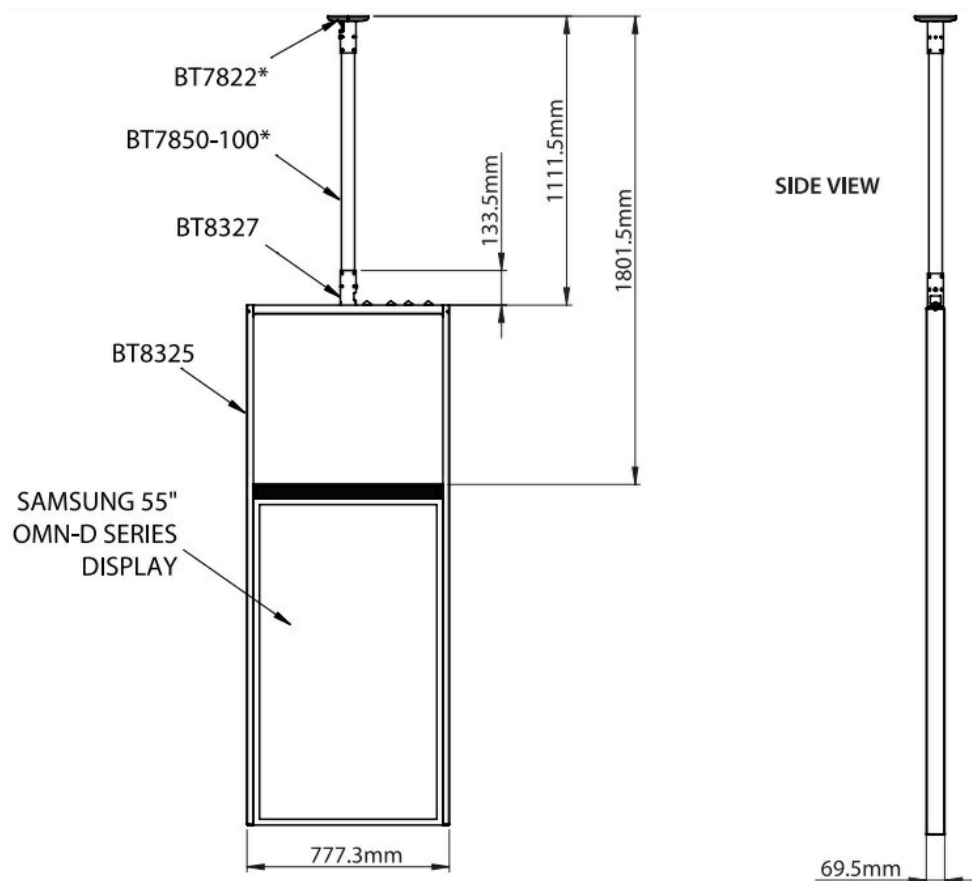
FINISH INSTALLATION

1. Install to a ceiling mount using the appropriate System 2 installation guides.
2. Follow the BT8325 instructions to complete the screen installation.



DIMENSIONS

TYPICAL INSTALLATION



CONTACT:
info@btechavmounts.com

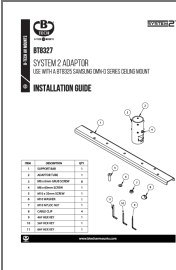
2023 8Tech International Design & Manufacturing Ltd. All rights reserved Breech AV Mounts is a registered trademark of 8Tech International Design & Manufacturing Ltd. B-Tech AV Mounts & the B-Tech logo are registered trademarks, All other trademarks and product names are trademarks of their respective owners. Photographs are for illustrative purposes only. E&OE.

AMA-BT8327-V1-0223-44 MADE IN THE PRC.

www.btechavmounts.com



Documents / Resources

	<p>B-TECH BT8325 System 2 Adaptor [pdf] Installation Guide BT8325 System 2 Adaptor, BT8325, System 2 Adaptor, Adaptor</p>
---	---