

B R Status Indicators Made Simple Instruction Manual

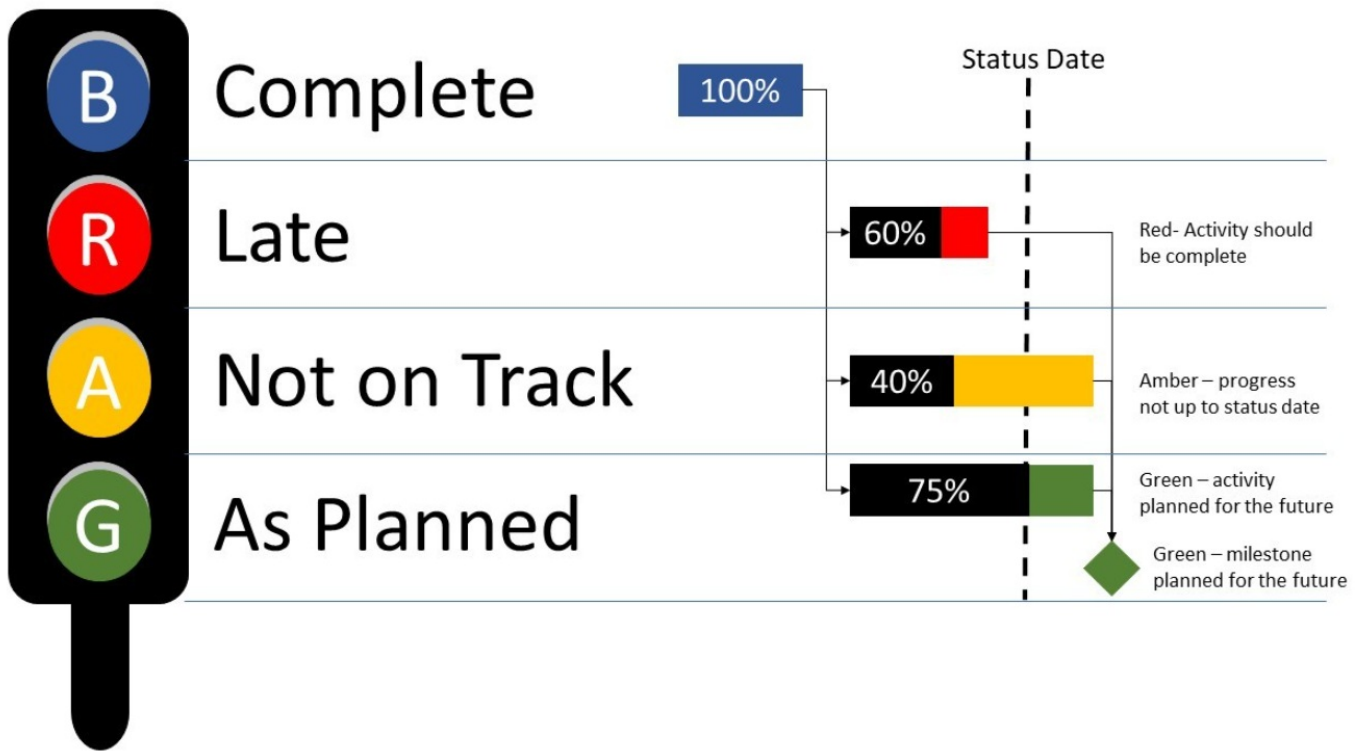
[Home](#) » [B R](#) » B R Status Indicators Made Simple Instruction Manual 

Contents

- 1 B R Status Indicators Made Simple
- 2 Product Information
- 3 Product Usage Instructions
- 4 Description of a feature
- 5 Instructions
- 6 Documents / Resources
 - 6.1 References
- 7 Related Posts

B&R

B R Status Indicators Made Simple



Product Information

Specifications

- Product Name: mappView
- Author: Jan Fikejzl
- Release Date: September 2023

Product Usage Instructions

Description of a Feature

Display indicators of machine status in visualizations using custom styles and style bindings.

Instructions

Creating Session Variables

1. Click on the folder variables in the mappView folder.
2. Add a session variables file by going to: Toolbox -> SessionVariable.
3. The value of the session variable should correspond to the ID of the user-defined style of the ellipse widget.

Style Binding

Utilize style binding for effective usage of mappView. Avoid using two overlapping widgets; instead, change the style property based on the status value.

NOTE: Avoid naming styles after specific colors to ensure flexibility in style changes.

By following these steps, you can easily incorporate status indicators into your projects.

Frequently Asked Questions (FAQ)

- **Q: Can I use mapView to display multiple status indicators simultaneously?**

A: Yes, you can create multiple session variables and corresponding user-defined styles to display various status indicators.

- **Q: Is it possible to customize the appearance of the status indicators in mapView?**

A: Yes, you can customize the styles and bindings to create unique visual representations for different machine statuses.

Instruction manual mapView

Status indicators made simple

Author :

Jan Fikejzl

September 2023

Description of a feature

More often than not we need a way to display an indicator of a machine status into our visualizations. This guide will show you how to make such indicators effectively using custom styles and style bindings.



Figure (1) Example of status indicators

Instructions

- First of all you need to create a shape that will be changing colours according to the current status. Go to: Toolbox -> Ellipse. Leave all of the properties as default.
Then you need to create your UserDefined style, go to: Toolbox -> Style and add it under Styles Set. Into this style you can add all of user defined style changes, so they are in one place. After that you need to name its ID and add this ID to the StylesSet of the theme. In the file named UserDefined.styles you need to add the styles of the indicators. Then, name the IDs of each style, this will be used for the value of a session variable later.
-

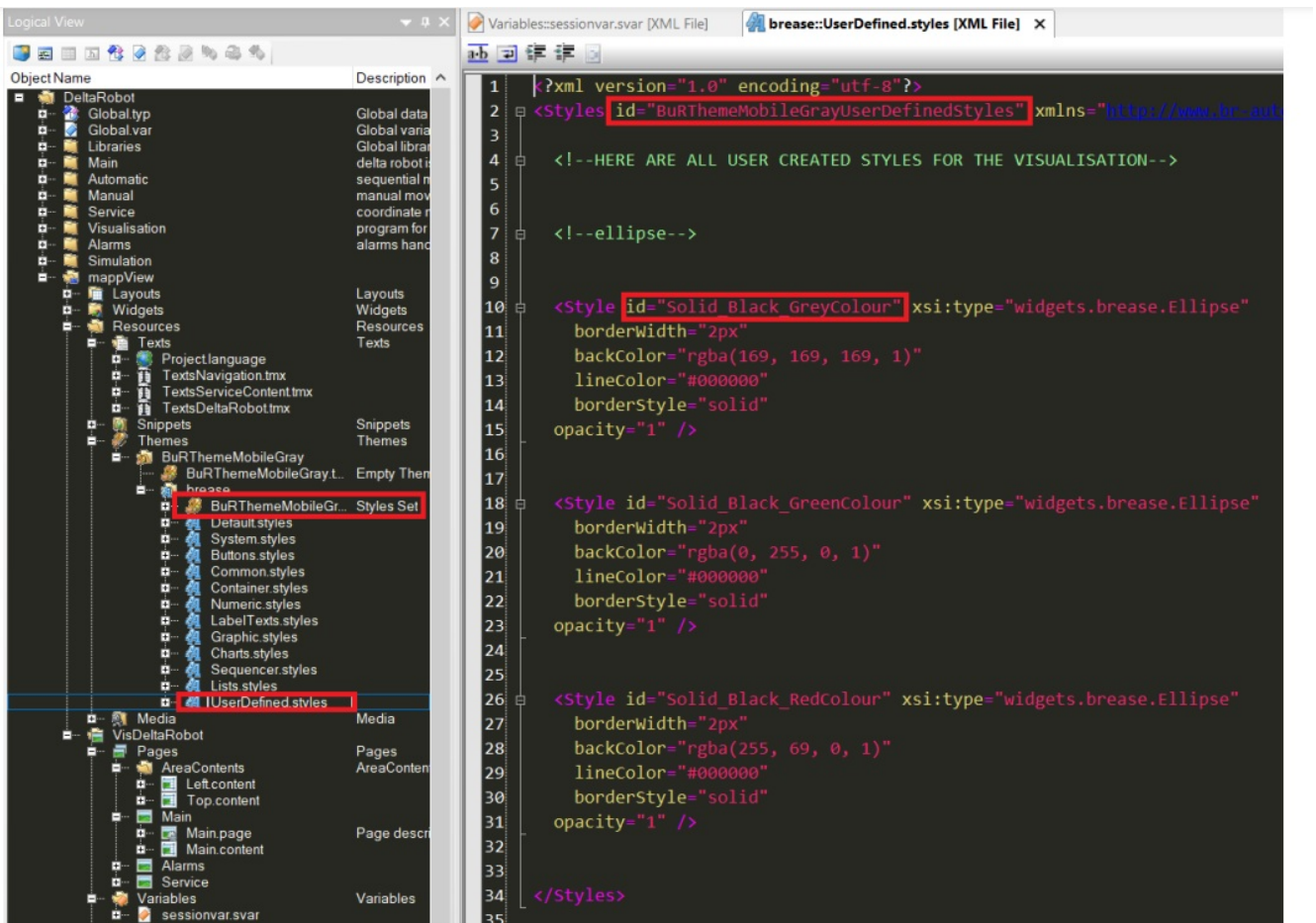


Figure (2) UserDefined styles

Now you need to create the session variables that will be used to change the style property of the ellipse widgets. Click on the folder variables in the mappView folder and add session variables file, go to: Toolbox -> SessionVariable. The value of the session variable must be the corresponding ID of the user defined style of the ellipse widget. 3

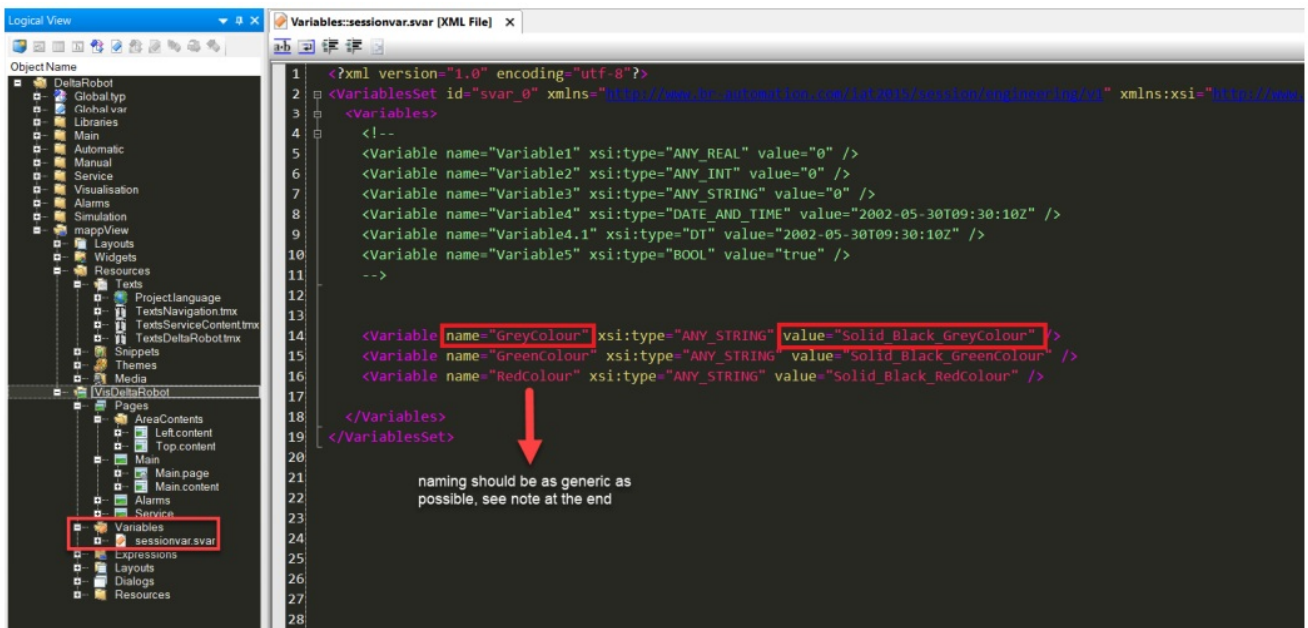


Figure (3) Session variables

- Then you need to go to the properties of the ellipse widget, and make a binding to its style property. Select List on the bar of the pop-up window. As Selector, select OPC-UA and pick the status variable that you want to display. As List definition, select Variables and under Session Variables pick those corresponding to your desired style change, in our case GreenColour and GreyColour. Add those and lastly you need to change their key, this key is connected to the value of the OPC-UA (boolean) variable so when that is changed, the style is

also changed. Make sure you use small case (true, false), this binding is in its essence just a XML file.

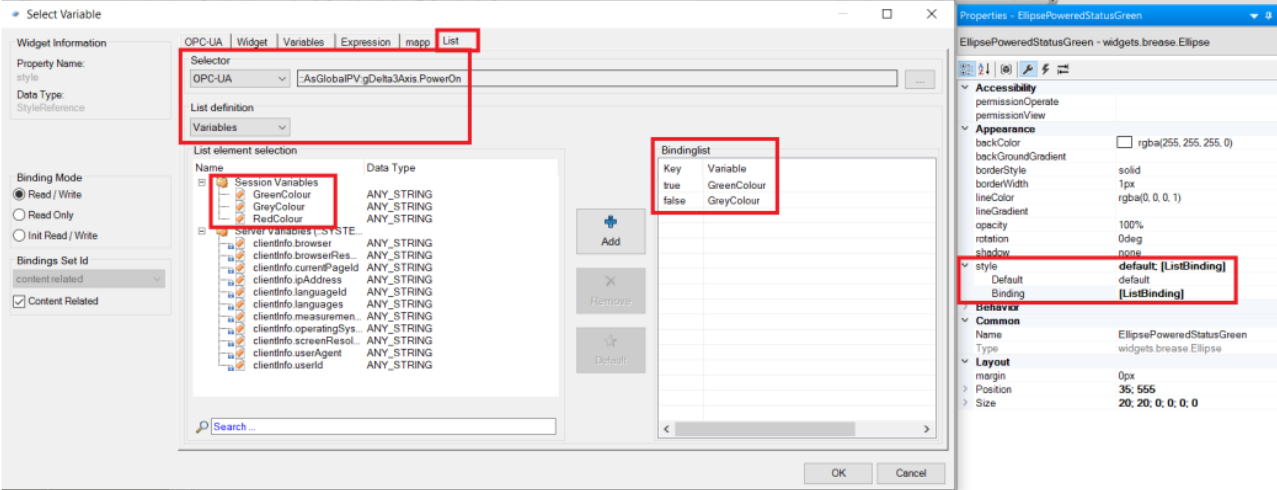



Figure (4) Style binding

- This is a more effective and optimal usage of mapView, than using two overlapping widgets, where one is visible while the other is invisible if the status value is set to true and vice versa.
NOTE: It is not recommended to name the style same as the colour you are using in that style. Imagine you name the style RedColour for warnings, but then you change the warning colour to yellow and red colour will be set for emergencies...
- Your style naming should be as general as possible. Such as: SwitchedOn/Off, Engaged, Paused, Error, Halt etc.
- Now, you should be able to replicate this feature into your own projects.

Copyright © B&R Jan Fikejzl
mapView_StatusIndicators.pdf Page 2 of 2

Documents / Resources



INSTRUCTION MANUAL
mapView
Status indicators made simple

Author:
Jan Fikejzl

Version: 001

[B R Status Indicators Made Simple](#) [pdf] Instruction Manual
Status Indicators Made Simple, Indicators Made Simple, Made Simple, Simple

References

- [User Manual](#)

[Manuals+](#), [Privacy Policy](#)

This website is an independent publication and is neither affiliated with nor endorsed by any of the trademark owners. The "Bluetooth®" word mark and logos are registered trademarks owned by Bluetooth SIG, Inc. The "Wi-Fi®" word mark and logos are registered trademarks owned by the Wi-Fi Alliance. Any use of these marks on this website does not imply any affiliation with or endorsement.