



## B K PRECISION LBX4000 5 MHz Sweep Function Generator Instruction Manual

[Home](#) » [B&K Precision](#) » B K PRECISION LBX4000 5 MHz Sweep Function Generator Instruction Manual 

### **BK PRECISION<sup>®</sup>** INSTRUCTION MANUAL



**Model 4012A**  
**5 MHz SWEEP FUNCTION GENERATOR**  
**with DIGITAL DISPLAY**

## Contents

- 1 LBX4000 5 MHz Sweep Function Generator
- 2 INTRODUCTION
- 3 SPECIFICATIONS
- 4 CONTROLS AND INDICATORS
- 5 OPERATING INSTRUCTIONS
- 6 VOLTAGE CONTROLLED FREQUENCY OPERATION
- 7 OUTPUT PROTECTION CONSIDERATIONS
- 8 FUNCTION GENERATOR APPLICATIONS
- GUIDEBOOK
- 9 MAINTENANCE
- 10 LIMITED ONE-YEAR WARRANTY
- 11 Documents / Resources
  - 11.1 References

## LBX4000 5 MHz Sweep Function Generator

### TEST INSTRUMENT SAFETY

#### WARNING

Normal use of test equipment exposes you to a certain amount of danger from electrical shock because testing must sometimes be performed where exposed voltage is present. An electrical shock causing 10 milliamps of current to pass through the heart will stop most human heartbeats. Voltage as low as 35 volts dc or ac rms should be considered dangerous and hazardous since it can produce a lethal current under certain conditions. Higher voltages pose an even greater threat because such voltage can more easily produce a lethal current. Your normal work habits should include all accepted practices to prevent contact with exposed high voltage, and to steer current away from your heart in case of accidental contact with a high voltage. You will significantly reduce the risk factor if you know and observe the following safety precautions:

1. Don't expose high voltage needlessly. Remove housings and covers only when necessary. Turn off equipment while making test connections in high-voltage circuits. Discharge high-voltage capacitors after removing power.
2. If possible, familiarize yourself with the equipment being tested and the location of its high voltage points. However, remember that high voltage may appear at unexpected points in defective equipment.
3. Use an insulated floor material or a large, insulated floor mat to stand on, and an insulated work surface on which to place equipment; and make certain such surfaces are not damp or wet.
4. Use the time proven "one hand in the pocket" technique while handling an instrument probe. Be particularly careful to avoid contacting a nearby metal object that could provide a good ground return path.
5. When testing ac powered equipment, remember that ac line voltage is usually present on some power input circuits such as the on-off switch, fuses, power transformer, etc. any time the equipment is connected to an ac outlet, even if the equipment is turned off.

#### Safety Summary

The following safety precautions apply to both operating and maintenance personnel and must be followed during all phases of operation, service, and repair of this instrument.



Before applying power to this instrument:

- Read and understand the safety and operational information in this manual.

- Apply all the listed safety precautions.
- Verify that the voltage selector at the line power cord input is set to the correct line voltage. Operating the instrument at an incorrect line voltage will void the warranty.
- Make all connections to the instrument before applying power.
- Do not operate the instrument in ways not specified by this manual or by B&K Precision.

Failure to comply with these precautions or with warnings elsewhere in this manual violates the safety standards of design, manufacture, and intended use of the instrument. B&K Precision assumes no liability for a customer's failure to comply with these requirements.

### **Category rating**

The IEC 61010 standard defines safety category ratings that specify the amount of electrical energy available and the voltage impulses that may occur on electrical conductors associated with these category ratings. The category rating is a Roman numeral of I, II, III, or IV. This rating is also accompanied by a maximum voltage of the circuit to be tested, which defines the voltage impulses expected and required insulation clearances. These categories are: Category I (CAT I): Measurement instruments whose measurement inputs are not intended to be connected to the mains supply. The voltages in the environment are typically derived from a limited-energy transformer or a battery. Category II (CAT II): Measurement instruments whose measurement inputs are meant to be connected to the mains supply at a standard wall outlet or similar sources. Example measurement environments are portable tools and household appliances.

Category III (CAT III): Measurement instruments whose measurement inputs are meant to be connected to the mains installation of a building. Examples are measurements inside a building's circuit breaker panel or the wiring of permanently-installed motors.

Category IV (CAT IV): Measurement instruments whose measurement inputs are meant to be connected to the primary power entering a building or other outdoor wiring.

### **WARNING**

Do not use this instrument in an electrical environment with a higher category rating than what is specified in this manual for this instrument.

### **WARNING**

You must ensure that each accessory you use with this instrument has a category rating equal to or higher than the instrument's category rating to maintain the instrument's category rating. Failure to do so will lower the category rating of the measuring system.

#### **Electrical Power**

This instrument is intended to be powered from a CATEGORY II mains power environment. The mains power should be 120 V RMS or 240 V RMS. Use only the power cord supplied with the instrument and ensure it is appropriate for your country of use.

#### **Ground the Instrument**

### **WARNING**

To minimize shock hazard, the instrument chassis and cabinet must be connected to an electrical safety ground. This instrument is grounded through the ground conductor of the supplied, three-conductor AC line power cable. The power cable must be plugged into an approved three-conductor electrical outlet. The power jack and mating plug of the power cable meet IEC safety standards.

### **WARNING**

Do not alter or defeat the ground connection. Without the safety ground connection, all accessible conductive parts (including control knobs) may provide an electric shock. Failure to use a properly-grounded approved outlet and the recommended three-conductor AC line power cable may result in injury or death.

### **WARNING**

Unless otherwise stated, a ground connection on the instrument's front or rear panel is for a reference of potential only and is not to be used as a safety ground.

Do not operate in an explosive or flammable atmosphere

### **WARNING**

Do not operate the instrument in the presence of flammable gases or vapors, fumes, or finely divided particulates.

## **WARNING**

The instrument is designed to be used in office-type indoor environments. Do not operate the instrument

- In the presence of noxious, corrosive, or flammable fumes, gases, vapors, chemicals, or finely-divided particulates.
- In relative humidity conditions outside the instrument's specifications.
- In environments where there is a danger of any liquid being spilled on the instrument or where any liquid can condense on the instrument.
- In air temperatures exceeding the specified operating temperatures.
- In atmospheric pressures outside the specified altitude limits or where the surrounding gas is not air.
- In environments with restricted cooling air flow, even if the air temperatures are within specifications.
- In direct sunlight.

## **CAUTION**

This instrument is intended to be used in an indoor pollution degree 2 environment. The operating temperature range is 0 °C to 40 °C and the operating humidity range is up to 80% relative humidity with no condensation allowed.

Measurements made by this instrument may be outside specifications if the instrument is used in non-office-type environments. Such environments may include rapid temperature or humidity changes, sunlight, vibration and/or mechanical shocks, acoustic noise, electrical noise, strong electric fields, or strong magnetic fields.

Do not operate instrument if damaged

## **WARNING**

If the instrument is damaged, appears to be damaged, or if any liquid, chemical, or other material gets on or inside the instrument, remove the instrument's power cord, remove the instrument from service, label it as not to be operated, and return the instrument to B&K Precision for repair. Notify B&K Precision of the nature of any contamination of the instrument.

Clean the instrument only as instructed

## **WARNING**

Do not clean the instrument, its switches, or its terminals with contact cleaners, abrasives, lubricants, solvents, acids/bases, or other such chemicals. Clean the instrument only with a clean dry lint-free cloth or as instructed in this manual.

Not for critical applications

## **WARNING**

This instrument is not authorized for use in contact with the human body or for use as a component in a life-support device or system.

Do not touch live circuits

## **WARNING**

Instrument covers must not be removed by operating personnel. Component replacement and internal adjustments must be made by qualified service-trained maintenance personnel who are aware of the hazards involved when the instrument's covers and shields are removed.

Under certain conditions, even with the power cord removed, dangerous voltages may exist when the covers are removed. To avoid injuries, always disconnect the power cord from the instrument, disconnect all other connections (for example, test leads, computer interface cables, etc.), discharge all circuits, and verify there are no hazardous voltages present on any conductors by measurements with a properly-operating voltage-sensing device before touching any internal parts. Verify the voltage-sensing device is working properly before and after making the measurements by testing with known-operating voltage sources and test for both DC and AC voltages. Do not attempt any service or adjustment unless another person capable of rendering first aid and resuscitation is present.

Do not insert any object into an instrument's ventilation openings or other openings.

## **WARNING**

Hazardous voltages may be present in unexpected locations in circuitry being tested when a fault condition in the circuit exists.

Fuse replacement

## **WARNING**

Fuse replacement must be done by qualified service-trained maintenance personnel who are aware of the instrument's fuse requirements and safe replacement procedures. Disconnect the instrument from the power line before replacing fuses. Replace fuses only with new fuses of the fuse types, voltage ratings, and current ratings specified in this manual or on the back of the instrument. Failure to do so may damage the instrument, lead to a safety hazard, or cause a fire.

Failure to use the specified fuses will void the warranty.

Servicing

## **CAUTION**

Do not substitute parts that are not approved by B&K Precision or modify this instrument.

Return the instrument to B&K Precision for service and repair to ensure that safety and performance features are maintained.

Cooling fans

## **CAUTION**

This instrument contains one or more cooling fans. For continued safe operation of the instrument, the air inlet and exhaust openings for these fans must not be blocked nor must accumulated dust or other debris be allowed to reduce air flow. Maintain at least 25 mm clearance around the sides of the instrument that contain air inlet and exhaust ports. If mounted in a rack, position power devices in the rack above the instrument to minimize instrument heating while rack mounted. Do not continue to operate the instrument if you cannot verify the fan is operating (note some fans may have intermittent duty cycles). Do not insert any object into the fan's inlet or outlet.

Use correctly sized wires

## **WARNING**

To connect a load to the power supply, use a wire diameter large enough to handle the maximum continuous output short-circuit current of the power supply without the wire overheating.


For continued safe use of the instrument

- Do not place heavy objects on the instrument.
- Do not obstruct cooling air flow to the instrument.
- Do not place a hot soldering iron on the instrument.
- Do not pull the instrument with the power cord, connected probe, or connected test lead.
- Do not move the instrument when a probe is connected to a circuit being tested.

### **Compliance Statements**

Disposal of Old Electrical & Electronic Equipment (Applicable in the European Union and other European countries with separate collection systems)



 This product is subject to Directive 2002/96/EC of the European Parliament and the Council of the European Union on waste electrical and electronic equipment (WEEE), and in jurisdictions adopting that Directive, is marked as being put on the market after August 13, 2005, and should not be disposed of as unsorted municipal waste. Please utilize your local WEEE collection facilities in the disposition of this product and otherwise observe all applicable requirements.

## INTRODUCTION

The B+K Precision Model 4012A Sweep/Function Generator is a versatile signal source which combines several functions into one unit – waveform generation, pulse generation (through variable symmetry), and frequency sweep. Additionally, the instrument provides the added convenience of a built-in frequency counter. This permits more accurate determination of output frequency than is possible with a simple calibrated dial. Coarse and fine tuning controls permit precision stability of the output frequency.

With this versatility, the unit has a vast number of applications in both analog and digital electronics in the engineering, manufacturing, servicing, educational, and hobbyist fields.

The heart of the function generator is a VCG (voltage controlled generator) that produces precision sine, square, or triangle waves over the 0.5 Hz to 5 MHz range. This encompasses sub audible, audio, ultrasonic, and RF applications. A continuously variable dc offset allows the output to be injected directly into circuits at the correct bias level.

The sweep generator offers linear or log sweep with variable sweep rate and adjustable sweep time.

Variable symmetry of the output waveform converts the instrument to a pulse generator capable of generating rectangular waves or pulses, ramp or sawtooth waves, and slewed sine waves.

In addition to the above features, an external voltage may be used to control operating frequency. This is useful in situations where an externally controlled frequency is desirable.

## SPECIFICATIONS

### FREQUENCY CHARACTERISTICS

#### Waveforms

Sine, Square, Triangle,  $\pm$  Pulse,  $\pm$  Ramp

#### Range

0.5 Hz to 5 MHz in 7 ranges

#### Resolution

4 digits

#### Tuning Range

Coarse: 10:1, Fine:  $\pm 5\%$  of Coarse Setting

#### Variable Duty Cycle

15:85:15 Continuously Variable

#### Operating Modes

Normal, VCG (Voltage Controlled Generator)

#### Frequency Stability

Output frequency will not change more than 0.09% in 15 minutes after 1 hour warmup.

### OUTPUT CHARACTERISTICS

#### Impedance

50 $\Omega$   $\pm 10\%$

#### Level

20V p-p Open-circuit, 10V p-p into 50  $\Omega$

#### Amplitude Control

Variable, 20 dB range typical

#### Attenuation

-20 dB  $\pm 1$  dB

#### DC Offset

Preset:  $\pm 0.1$  V typical

Variable:  $\pm 10$  V open-circuit,  $\pm 5$  V into 50 $\Omega$

### SINE WAVE

#### Distortion

$\leq 3\%$  Typical at 1 Kh

#### Flatness

±5% (.45 dB)

#### **SQUARE WAVE**

Symmetry

0.5Hz to 100 kHz ≤2%

Rise Time

≤120nS

#### **TRIANGLE WAVE**

Linearity

≥98% to 100 kHz

#### **TTL OUTPUT**

Level 0.8V to 4V p-p + 0.5V p-p

Rise Time ≤20 n's

Duty Cycle 50% typical

#### **CMOS OUTPUT**

Max Frequency 2 MHz

Level 4V to 14V ±0.5V p-p, Continuously variable

Rise Time ≤120nS

#### **VCG (Voltage Controlled Generator) INPUT**

Input Voltage

0 – 10 V ±1 V causes a 100:1 frequency change

Impedance

10 kΩ ±5%

#### **SQUARE WAVE**

Symmetry

0.5Hz to 100kHz ≤2%

Rise Time

≤120 n's

#### **TRIANGLE WAVE**

Linearity

≥98% to 100kHz

#### **SWEEP OPERATION**

Mode LIN / LOG

Width 100:1,

Continuously variable

Rate 0.5 sec to 30

sec, continuously variable

Sweep Output 0 to 10V

#### **FREQUENCY COUNTER**

Accuracy

Time Base Accuracy ±1 count

Time Base Accuracy ±10 PPM (23 °C ±5 °C)

Display 4 digit LED

#### **AC INPUT**

115 / 230VAC ±10%, 50 / 60Hz, internal

jumper selectable

#### **DIMENSIONS (H x W x D)**

4.5" x 10.5" x 12.25"

#### **WEIGHT**

4 lb. (1.8 kg.)

#### **ACCESSORIES**

Instruction Manual

Output Cable, BNC to Alligator Clips

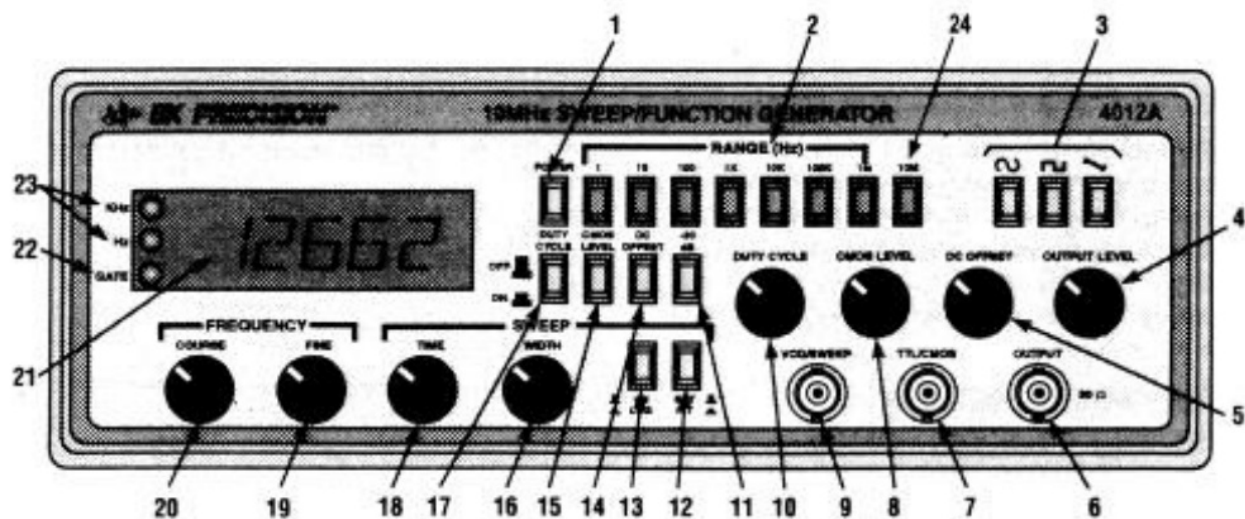
**NOTE:** Specifications and information are subject to change without notice. Please visit [www.bkprecision.com](http://www.bkprecision.com) for the most current product information.

#### **CONTROLS AND INDICATORS**

## FRONT PANEL (Refer to Fig. 1)

1. **POWER Switch.** Turns power on and off.
2. **RANGE Switch.** Selects output frequency range. Seven ranges from 1 Hz to 10 MHz Switch indicates maximum frequency of range and is adjusted with COARSE FREQUENCY control to 0.1 times the maximum. For example, if the 100 kHz range is selected, the output frequency can be adjusted from 10 kHz to 100 kHz.
3. **FUNCTION Switch.** Selects sine, square, or triangle waveform at OUTPUT jack.
4. **OUTPUT LEVEL Control.** Controls the amplitude of the signal at the OUTPUT jack. Output level can be decreased by approximately 20 dB with this control.
5. **DC OFFSET Control.** Enabled by the DC OFFSET Switch (12). Clockwise rotation from center changes the DC offset in a positive direction while counterclockwise rotation from center changes the DC offset in a negative direction.
6. **OUTPUT Jack.** Waveform selected by FUNCTION switch as well as the superimposed DC OFFSET voltage is available at this jack.
7. **TTL/CMOS Jack.** TTL or CMOS square wave, depending on the position of the CMOS LEVEL switch (13) is output at this jack. This output is independent of the OUTPUT LEVEL and DC OFFSET controls.
8. **CMOS LEVEL Control.** Rotating this control clockwise increases the amplitude of the CMOS square wave at the TTL/CMOS jack.
9. **VCG/SWEEP Jack.** Controlled by SWEEP EXT/INT Switch (12). When SWEEP EXT is selected, jack is the Voltage Controlled Generator input and permits external control of generator output frequency by a DC voltage input at this jack. A positive voltage will decrease frequency. When SWEEP INT is selected the internally generated sweep voltage is available at this jack for connection to an oscilloscope.
10. **DUTY CYCLE Control.** Enabled by the DUTY CYCLE Switch (14). Rotation from center position adjusts the duty cycle of the main OUTPUT signal.
11. **-20 dB Switch.** When engaged, the signal at the OUTPUT jack is attenuated by 20 db.
12. **SWEEP INT/EXT Switch.** When engaged (INT) enables the sweep mode of operation. Sweep rate is controlled by SWEEP TIME control (18) and sweep magnitude is controlled by the SWEEP WIDTH control (16). When released (EXT), allows external control of generator output frequency by a DC voltage input at the VCG/SWEEP jack (9).
13. **SWEEP LIN/LOG Switch.** When engaged (LOG) selects logarithmic sweep characteristic and in the released (LIN) position selects a linear sweep characteristic.
14. **DC OFFSET Switch.** When engaged, enables operation of the DC OFFSET control (5).
15. **CMOS LEVEL Switch.** When engaged, changes the TTL signal to CMOS signal at the TTL/CMOS jack





**Figure 1. Model 4012A Front Panel.**

16. **COUNTER DISPLAY.** Displays frequency of internally generated waveform.
17. **GATE LED.** Indicates when the frequency counter display is updated. When the 100K through 10M ranges are selected, the LED will flash 10 times per second (every 0.1 seconds). When the 10 through 10K ranges are selected, the LED will flash once every second and when the 1 range is selected, the LED will flash every 10 seconds. As the LED turns off, the display is updated.
18. **Hz and Kh LED.** Indicates whether the counter is reading in Hz or kHz.
19. **Invert Button.** Used to invert the output signal.
20. **SWEEP WIDTH Control.** Rotation determines sweep width by adjusting sweep stop frequency.
21. **DUTY CYCLE Switch.** When engaged, enables operation of DUTY CYCLE control (10).
22. **SWEEP TIME Control.** In sweep mode, rotation determines amount of time to sweep from the start frequency to the stop frequency.
23. **FINE FREQUENCY Control.** Vernier adjustment of the output frequency for ease of setting frequency.
24. **COARSE FREQUENCY Control.** Coarse adjustment of the output frequency from 0.1 to 1 times the selected range.

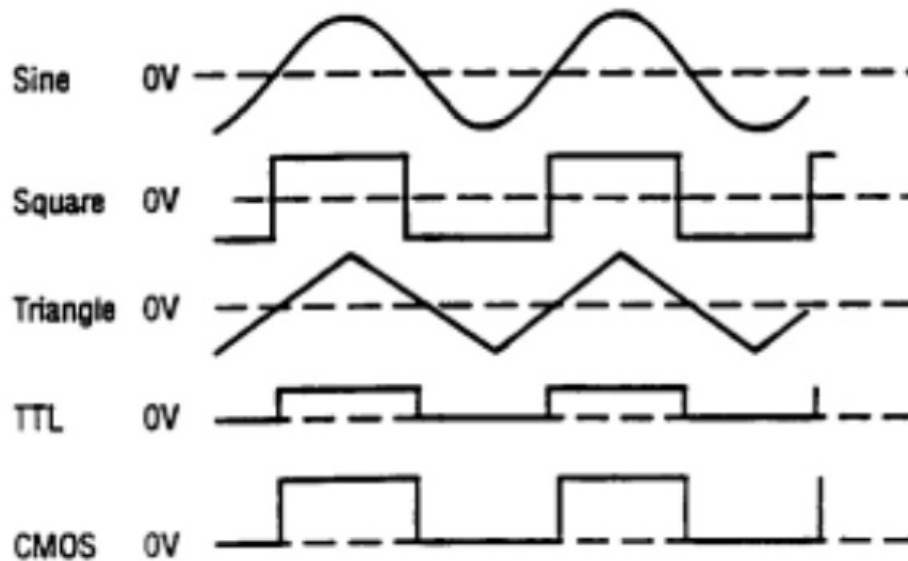
## OPERATING INSTRUCTIONS

The B+K Precision Model 4012A Sweep/Function Generator is a versatile instrument, capable of producing a variety of output waveforms over a broad range of frequencies. To gain a working familiarity with the unit, it is recommended that it be connected initially to an oscilloscope, so that the effects of the various controls on the output waveforms can be observed. Use this manual as required for reference until becoming accustomed to the operating procedures.

## FREQUENCY AND WAVEFORM SELECTION

1. Initially, verify that the DUTY CYCLE (17), CMOS LEVEL (15), DC OFFSET (14), -20 dB (11), and SWEEP INT/EXT (12) switches are in the OUT position (released). This will produce a symmetrical waveform unaffected by the sweep generator and other controls.
2. Plug the unit into an appropriate power source and turn it on by engaging the POWER switch (1).
3. Select the desired waveform (SINE, SQUARE, or TRIANGLE) by engaging one of the FUNCTION switches (3). Phase relationships of the waveforms are shown in Fig. 2.
4. Select the frequency of the waveform by depressing one of the RANGE switches (2). The output frequency is displayed, along with the appropriate measurement units, kHz or Hz (23), on the LED display.

5. Rotate the COARSE (20) frequency control to quickly set the output frequency to the approximate desired value. The FINE (19) frequency control can then be used to easily set the output to the specific desired value. The frequency selected is available at the OUTPUT jack (6). In addition, a digital signal, either TTL or CMOS is available at the TTL/CMOS jack (7) (refer to the "TTL/CMOS OUTPUT" section of this manual).

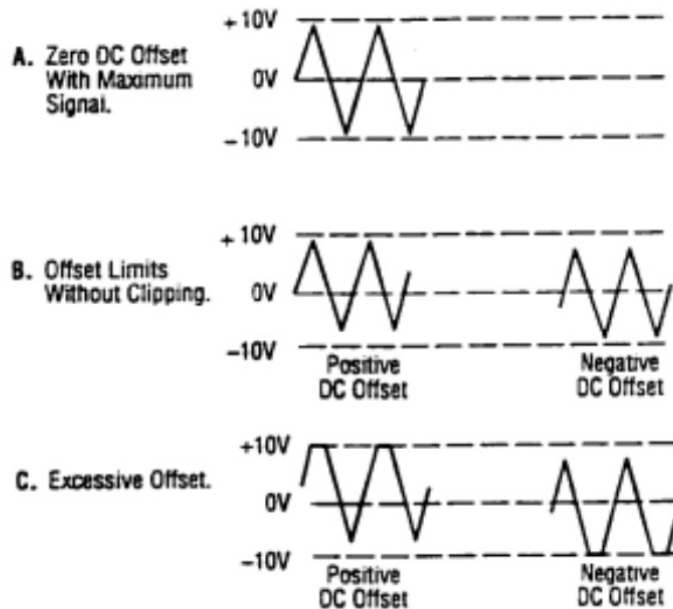


**Figure 2. Output Waveform and Phase Relationship**

6. Adjust the amplitude of the output as desired using the OUTPUT LEVEL control (4). Rotation of this control varies the amplitude from maximum to 20 dB below maximum. An additional attenuation of 20 dB is available by engaging the -20 dB switch (11). The attenuation factors can be combined for a total of -40 dB. The maximum signal level is 10 V p-p (into 50  $\Omega$ ).
7. A superimposed DC component can be added to the output signal by engaging the DC OFFSET switch (14) to enable operation of the DC OFFSET control (5). Rotation of this control adds a positive or negative DC component to the output signal. The DC component introduced is independent of the OUTPUT LEVEL control and can be varied by  $\pm 10$  volts open circuited or  $\pm 5$  volts into 50  $\Omega$ . The DC Offset does not affect the TTL/CMOS output jack. The effect of DC OFFSET is shown in Fig. 3.

## CONSIDERATIONS

1. Counterclockwise rotation of the COARSE frequency control decreases the output frequency to approximately one-tenth of the maximum for the range selected (10:1). For example, if the 10 K range is selected and the COARSE frequency control is set to full counterclockwise, the output frequency is approximately 1 kHz.
2. It is advisable to set the FINE frequency control to the approximate center of its rotation before setting the COARSE frequency control. This assures that the FINE control will not reach its limit while trying to finalize the frequency setting.
3. The FINE frequency control provides approximately  $\pm 5\%$  frequency deviation from the COARSE control setting. This provides Vernier adjustment to easily set the frequency to a precise value.
4. When the 1 Hz range is selected, the gate time is 10 seconds and the display is updated once every 10 seconds. The result of a frequency change will not be displayed until 10 seconds later. Adjust the frequency in progressively smaller steps, waiting for the display to update until the desired frequency is obtained.

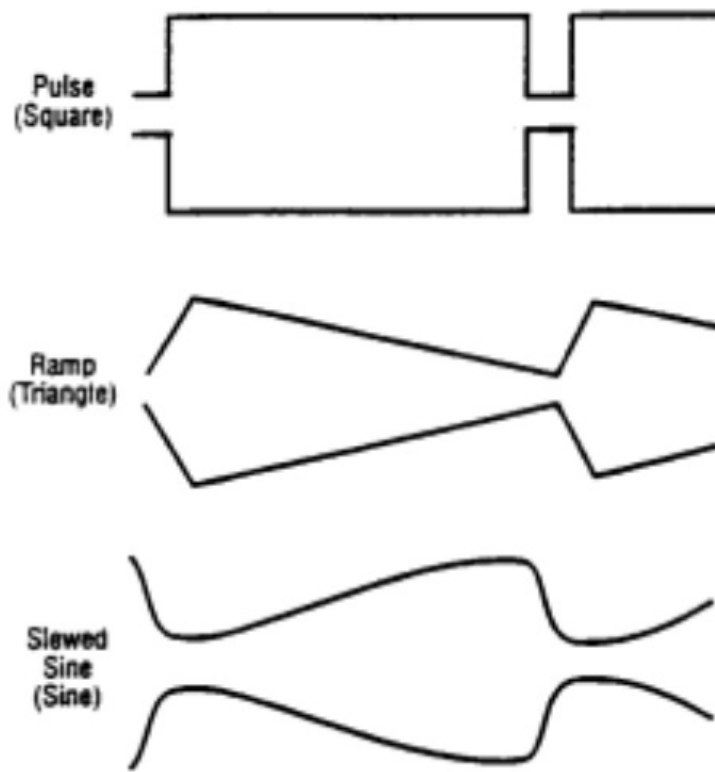


**Figure 3. Use of DC OFFSET Control**

5. When outputting square waves or when using the TTL output, terminate the cable into  $50\ \Omega$  to minimize ringing. Also, keep cables as short as possible.
6. Remember that the output signal swing of the generator is limited to  $\pm 10$  volts open circuited or  $\pm 5$  volts into  $50\ \Omega$ , and applies to the combined peak-to-peak signal and DC offset. Clipping occurs slightly above these levels. Fig. 3 illustrates the various operating conditions encountered when using the DC offset. If the desired output signal is large or if a large DC offset is required, an oscilloscope should be used to make sure that the desired signal is obtained without undesirable clipping.

### **DUTY CYCLE CONTROL**

The DUTY CYCLE control can be used to alter the symmetry of the output waveform, to produce wave shapes such as those shown in Fig. 4. For a square wave, symmetry variation amounts to changing the duty cycle (ratio of "high" to "low" time), effectively converting the instrument into a pulse generator. For a triangle wave, the result is a ramp, and with a sine wave, a distorted wave shape called a slewed sine is produced. The Model 4012A provides for symmetry variation from 15% to 85%.



**Figure 4. Effects of Symmetry Variation.**

1. Select the waveform desired either SINE, SQUARE or TRIANGLE.
2. Engage the DUTY CYCLE switch (17) and adjust the DUTY CYCLE control (10) for the desired wave shape. Clockwise rotation from center results in an increase in square wave duty cycle, and changes the sine and triangle waves as shown in the top waveform of each pair of Fig. 4. Counter-clockwise rotation results in the bottom waveform in each pair.
3. Varying the duty cycle setting results in a slight change in frequency. Adjust the COARSE and FINE frequency controls as required.

#### **TTL/CMOS OUTPUT**

The TTL/CMOS output jack provides a fast rise time square wave output. Either a fixed TTL or a variable CMOS output level is available. The output is positive with respect to ground and can be used as an external sync pulse for oscilloscopes or as a variable frequency signal source for exercising logic circuits. Because of the fast rise time of this output, cable length should be minimized to limit ringing and overshoot.

1. Select the desired frequency range and adjust the frequency controls as required. The OUTPUT LEVEL and DC OFFSET controls have no effect on the signal at the TTL/CMOS jack.
2. When the CMOS LEVEL switch (15) is OFF, a TTL signal is output at the TTL/CMOS jack. Select a CMOS signal by engaging the CMOS LEVEL switch and adjust the level of the signal by rotating the CMOS LEVEL control (8).

#### **SWEEP OPERATION**

3. Select LINEAR sweep by leaving the SWEEP LIN/LOG switch (13) in the released position or LOG sweep by engaging the LIN/LOG switch.
4. Set the starting frequency (highest frequency) of the sweep by adjusting the COARSE frequency control and observing the counter.
5. Engage the SWEEP EXT/INT switch (12). The duration of the sweep can be varied by adjusting the SWEEP

TIME control (18). Sweep time is the same whether the sweep is linear or logarithmic, and is not affected by the sweep width.

1. The end frequency of the sweep (lowest frequency) can be adjusted by rotating the SWEEP WIDTH control (16). This adjustment should generally be made after setting the starting frequency, because it is largely dependent on that setting.
2. The front panel VCG/SWEEP jack (9) provides the internal ramp signal which can be used as the horizontal deflection signal for an oscilloscope, to give an X-Y display of signal amplitude vs. frequency. This method is commonly used when testing the frequency response of audio equipment or the bandwidth of amplifiers or other equipment. The response will be displayed high frequency to low frequency from left to right on the X-Y display. If the output of the circuit to be tested is connected to the vertical scope input, and the SWEEP output to the horizontal, setting the scope to X-Y mode produces the amplitude vs. frequency plot mentioned above. However, note that switching to LOG sweep still produces a linear display on the scope. This is because the horizontal sweeping signal, the internal log ramp, also becomes logarithmic when the sweep does. To view a true logarithmic graph, put the scope back in time base operation and use the Sweep output solely as a scope trigger. Use the scope's linear time base as a horizontal deflection source.

## **VOLTAGE CONTROLLED FREQUENCY OPERATION**

The Model 4012A can be operated as a voltage-controlled generator by using an external control voltage applied to the VCG/SWEEP input jack. The externally applied voltage will vary the frequency which is preselected by the range switches and the frequency controls. Applying approximately +10 V with the COARSE control at full clockwise decreases the output frequency by about 100 times (a 100:1 ratio).

1. Select the desired frequency range and waveform.
2. Set the starting frequency with the COARSE control. Apply a positive DC voltage to the VCG/SWEEP input jack (9) to decrease the frequency. A voltage from 0 to +10 V will cause the frequency to decrease by a factor of 100 if the COARSE frequency control is set at maximum CW rotation. For example, if the starting frequency is 100 kHz, applying +10 V will change the output frequency to 1 kHz.
3. To operate the function generator as a sweep generator, apply a positive going ramp signal to the VCG/SWEEP input jack. As the ramp voltage increases, the frequency decreases. The rate of sweep can be adjusted by varying the frequency of the ramp signal.
4. Specific frequencies can be selected by applying a fixed dc voltage to the VCG/SWEEP input jack or the frequencies can be stepped by applying a stepped dc voltage.
5. Do not apply more than  $\pm 15$  volts (dc or dc + ac peak) to the VCG/SWEEP input jack. Inputs of more than 15 volts will not cause any further shift in the frequency and could cause damage to the generator.

## **OUTPUT PROTECTION CONSIDERATIONS**

Use care when connecting the function generator output to a signal injection point. Excessive voltage at the point of signal injection of the function generator can cause internal damage.

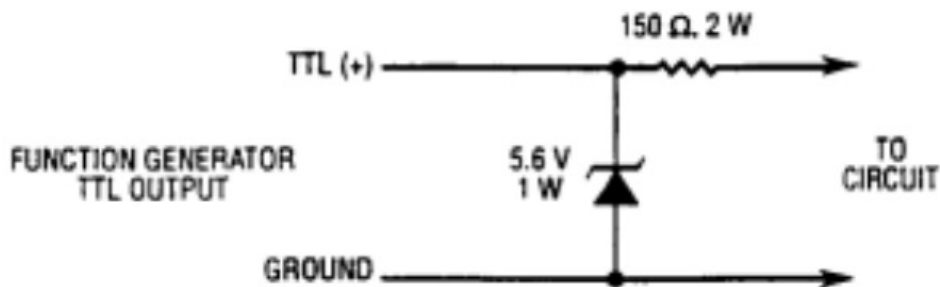
Under normal operation, the generator output should never be connected to an external voltage other than low dc values that can be matched with the DC OFFSET control. The Model 4012A is overload protected so that shorting the output, even continuously, will not cause damage. A fuse has been added in series with the OUTPUT jack to help protect the instrument from damage by connection to excessive external voltage.

Damage of this type usually occurs by accidentally connecting the output of the function generator to a voltage in the equipment under test. The following protective measures are strongly recommended:

1. The user should understand the equipment under test well enough to identify valid signal injection points (i.e.: the base of a transistor, a logic input of a gate, etc.). The voltage at valid signal injection points is rarely high

enough to damage the instrument.

2. If in doubt about the safety of a signal injection point, measure the voltage present at the intended point of signal injection before connecting the function generator output to that point.
3. When applying the main output of the function generator to a circuit point containing a dc level, adjust the DC OFFSET control so that the dc level at the main output matches the circuit voltage.
4. Connect the TTL output only to TTL-level circuits. Connect the CMOS output only to CMOS circuits. Measure the Voc of the circuit under test and adjust the CMOS LEVEL control as instructed in the manual.
5. When the function generator is used by students or other inexperienced users, the circuit of Fig. 5 could be added into your TTL output probe or test clip set. It will protect the TTL output of the generator against external voltages up to  $\pm 20$  volts.



**Figure 5. Circuit for Protection of TTL Output.**

## FUNCTION GENERATOR APPLICATIONS GUIDEBOOK

**B+K Precision** offers a "Guidebook to Function Generators" which describes numerous applications for this instrument, including hook-up details. It also includes a glossary of function generator terminology and an explanation of function generator circuit operation. It may be downloaded for free off our website at [www.bkprecision.com](http://www.bkprecision.com).

## MAINTENANCE

### WARNING

The following instructions are for use by qualified service personnel only. To avoid electrical shock, do not perform servicing other than contained in the operating instructions unless you are qualified to do so.

Remember that ac line voltage is present on line voltage input circuits any time the instrument is plugged into an ac outlet, even if turned off. Always unplug the function generator before performing service procedures.

### FUSE REPLACEMENT

1. Locate the fuse holder on the input line receptacle.
2. Remove the fuse holder and replace the fuse with an equal value fuse

## INSTRUMENT REPAIR SERVICE

Because of the specialized skills and test equipment required for instrument repair and calibration, many customers prefer to rely upon B+K PRECISION for this service. We maintain a network of B+K PRECISION authorized service agencies for this purpose. To use this service, even if the instrument is no longer under warranty, follow the instructions given in the WARRANTY SERVICE INSTRUCTIONS portion of this manual. There is a nominal charge for instruments out of warranty.

### AC LINE SELECTION

This instrument can operate on 115 or 230 VAC source at 50 or 60 Hz. The internal jumper allows you to select

the line voltage. Before connecting the power plug to an AC line outlet, be sure to check that voltage selector plug is set in the correct position corresponding to the line voltage in your location and the fuse rating shown on the rear panel of the unit.

## **CUSTOMER SUPPORT**

**1-800-462-9832**

B+K Precision offers courteous, professional technical support before and after the sale of their test instruments. The following services are typical of those available from our toll-free telephone number:

- Technical advice on the use of your instrument.
- Technical advice on special applications of your instrument.
- Technical advice on selecting the best instrument for a given task.
- Information on optional accessories for your instrument.
- Information on instrument repair and recalibration services.
- Replacement parts ordering.
- Availability of service publications.
- Information on other B+K Precision instruments.
- Requests for a new B+K Precision catalog.
- The name of your nearest B+K Precision distributor.

Call toll-free 1-800-462-9832  
Monday through Thursday, 8:00 A.M. to 5:00 P.M, Friday 8:00 A.M. TO 11:30 A.M.  
Pacific Standard Time  
(Pacific Daylight Time summer)

## **Service Information**

**Warranty Service:** Please return the product in the original packaging with proof of purchase to the address below. Clearly state in writing the performance problem and return any leads, probes, connectors and accessories that you are using with the device.

**Non-Warranty Service:** Return the product in the original packaging to the address below. Clearly state in writing the performance problem and return any leads, probes, connectors and accessories that you are using with the device. Customers not on open account must include payment in the form of a money order or credit card. For the most current repair charges please visit [www.bkprecision.com](http://www.bkprecision.com) and click on "service/repair".

Return all merchandise to B&K Precision Corp. with pre-paid shipping. The flat-rate repair charge for Non-Warranty Service does not include return shipping. Return shipping to locations in North American is included for Warranty Service. For overnight shipments and non-North American shipping fees please contact B&K Precision Corp.

B&K Precision Corp.  
22820 Save Ranch Parkway  
Yorba Linda, CA 92887  
[www.bkprecision.com](http://www.bkprecision.com)  
714-921-9095

Include with the returned instrument your complete return shipping address, contact name, phone number and description of problem.

## **LIMITED ONE-YEAR WARRANTY**



**B+K Precision Corp.** warrants to the original purchaser that its product and the component parts thereof, will be free from defects in workmanship and materials for a period of one year from the date of purchase.

**B+K Precision Corp.** will, without charge, repair or replace, at its' option, defective product or component parts. Returned product must be accompanied by proof of the purchase date in the form of a sales receipt.

To obtain warranty coverage in the U.S.A., this product must be registered by completing and mailing the enclosed warranty card to B+K

**Precision Corp.**, 22820 Save Ranch Parkway – Yorba Linda, CA 92887 within fifteen (15) days from the date of purchase.

**Exclusions: This warranty does not apply in the event of misuse or abuse of the product or as a result of unauthorized alterations or repairs. It is void if the serial number is altered, defaced or removed.**

**B+K Precision Corp.** shall not be liable for any consequential damages, including without limitation damages resulting from loss of use. Some states do not allow limitation of incidental or consequential damages, so the above limitation or exclusion may not apply to you.

This warranty gives you specific rights and you may have other rights, which vary from state to state.

## **TEST INSTRUMENT SAFETY**

(continued from inside front cover)

1. Some equipment with a two-wire ac power cord, including some with polarized power plugs, is the "hot chassis" type. This includes most recent television receivers and audio equipment. A plastic or wooden cabinet insulates the chassis to protect the customer. When the cabinet is removed for servicing, a serious shock hazard exists if the chassis is touched. Not only does this present a dangerous shock hazard, but damage to test instruments or the equipment under test may result from connecting the ground lead of most test instruments to a "hot chassis". To test "hot chassis" equipment, always connect an isolation transformer between the ac outlet and the equipment under test. The B+K Precision Model TR-110 or 1604 Isolation Transformer, or Model 1653 or 1655 AC Power Supply is suitable for most applications. To be on the safe side, treat all two-wire ac equipment as "hot chassis" unless you are sure it has an isolated chassis or an earth ground chassis.
2. On test instruments or any equipment with a 3-wire ac power plug, use only a 3-wire outlet. This is a safety feature to keep the housing or other exposed elements at earth ground.
3. B+K Precision products are not authorized for use in any application involving direct contact between our product and the human body, or for use as a critical component in a life support device or system. Here, "direct contact" refers to any connection from or to our equipment via any cabling or switching means. A "critical component" is any component of a life support device or system whose failure to perform can be reasonably expected to cause failure of that device or system, or to affect its safety or effectiveness.
4. Never work alone. Someone should be nearby to render aid if necessary. Training in CPR (cardiopulmonary resuscitation) first aid is highly recommended.

# **BK PRECISION®**

22820 Save Ranch Parkway – Yorba Linda, CA 92887

[www.bkprecision.com](http://www.bkprecision.com)

© 2022 B+K Precision Corp.


Downloaded from [Arrow.com](http://Arrow.com).

Printed in Taiwan



---

## Documents / Resources

	<p><a href="#">B K PRECISION LBX4000 5 MHz Sweep Function Generator</a> [pdf] Instruction Manual LBX4000 5 MHz Sweep Function Generator, LBX4000, 5 MHz Sweep Function Generator, Function Generator, Generator</p>
---	---

## References

- [B&K Precision Corporation](#)
- [User Manual](#)