



B C SPEAKERS WGX880TN Line Array Driver with Waveguide User Manual

[Home](#) » [B C SPEAKERS](#) » B C SPEAKERS WGX880TN Line Array Driver with Waveguide User Manual 

Contents

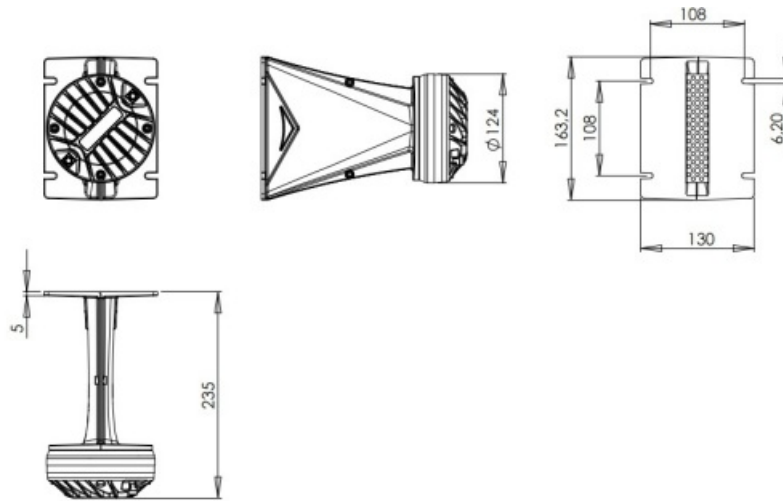
- [1 BC SPEAKERS WGX880TN Line Array Driver with Waveguide](#)
- [2 Line Array Sources- 1.4 Inches](#)
- [3 SPECIFICATIONS](#)
- [4 Documents / Resources](#)
- [5 Related Posts](#)



BC SPEAKERS WGX880TN Line Array Driver with Waveguide

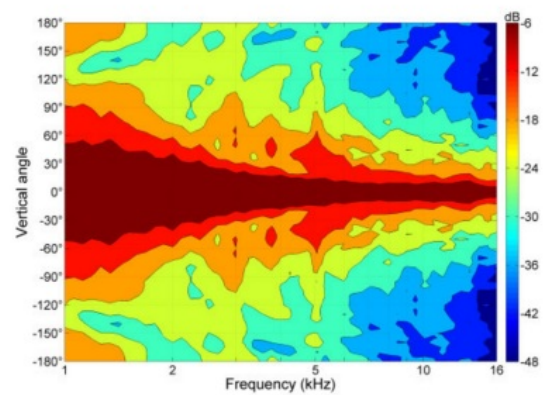
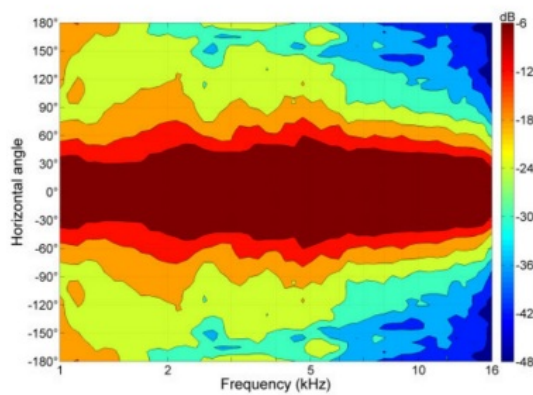
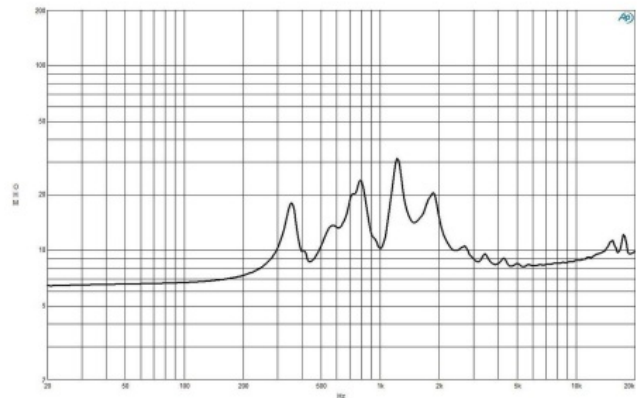
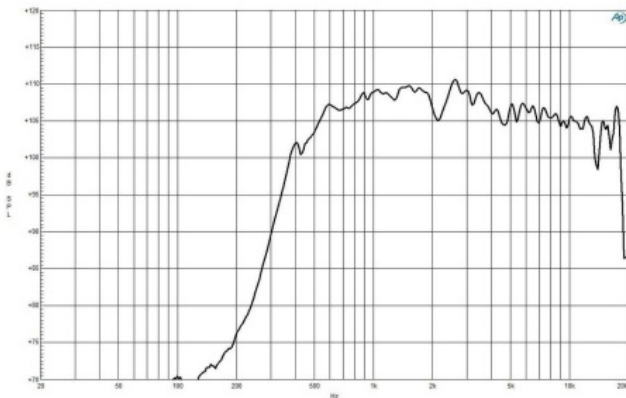


- Line Array optimized Waveguide with DE880TN driver



- 120° max horizontal coverage
- 220 W continuous program power capacity 75 mm (3 in) aluminum voice coil
- Titanium diaphragm
- 500 – 17000 Hz response
- 108 dB sensitivity
- Neodymium magnet assembly with shorting copper cap
- Waveguide horns are not sold separately

Line Array Sources- 1.4 Inches




SPECIFICATIONS

Horizontal Coverage	120 ° Max		Exit Size	153×25 mm (6×1 in)
Active Radiating Factor	93.7 %		Driver Diameter	124 mm (4.9 in)
Recommended Crossover ¹	0.8 kHz		Dimensions 163x130x235	mm (6.4×5.1×9.3 in)
Waveguide Material	Cast Aluminium		Net Weight	3.1 kg (6.83 lb)
Nominal Impedance	8 Ω		Shipping Units	1
Minimum Impedance	8.1 Ω		Shipping Weight	3.2 kg (7.05 lb)
Nominal Power Handling ²	110 W		Shipping Box	

- Sensitivity⁴ 108.0 dB
- Frequency Range⁵ 0.5 – 17.0 kHz
- Voice Coil Diameter 75 mm (3.0 in)
- Winding Material Aluminium
- Diaphragm Material Titanium
- Flux Density 1.85 T
- Magnet Material Neodymium Ring

1. 12 dB/Oct. Or higher slope high-pass filter.
2. 2-hour test made with continuous pink noise signal (6 dB crest factor) within the range from the recommended crossover frequency to 20 kHz. Power calculated on rated minimum impedance.
3. Power on Continuous Program is defined as 3 dB greater than the Nominal rating.
4. Applied RMS Voltage is set to 2.83 V for 8 ohms Nominal Impedance.
5. Waveguide mounted on 90°x10° bell horn

Documents / Resources

	<p>B C SPEAKERS WGX880TN Line Array Driver with Waveguide [pdf] User Manual WGX880TN Line Array Driver with Waveguide, WGX880TN, Line Array Driver with Waveguide, Driver with Waveguide, Waveguide</p>
---	---