



B C SPEAKERS WG400 Line Array Sources User Manual

[Home](#) » [B C SPEAKERS](#) » B C SPEAKERS WG400 Line Array Sources User Manual 



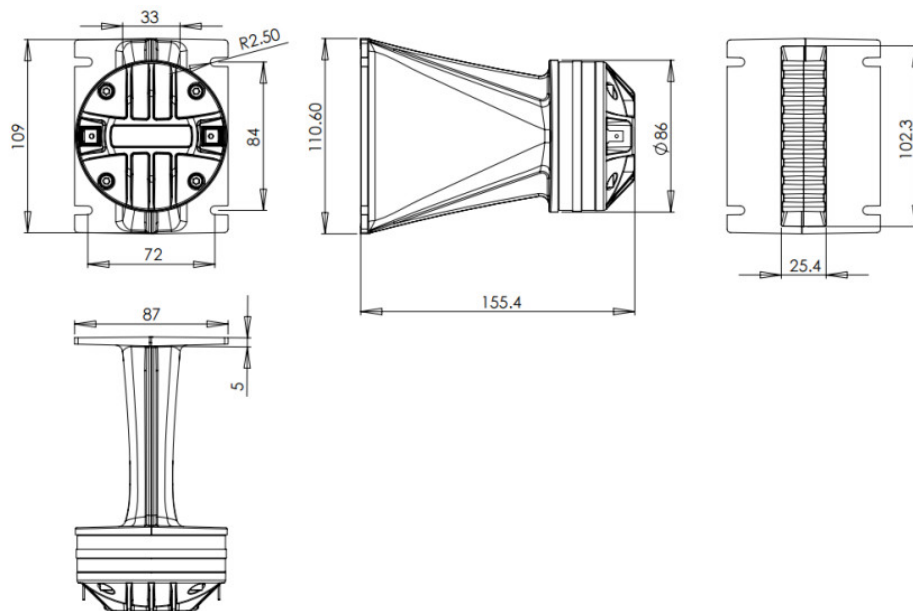
WG400
Line Array Sources – 1.0 Inches
User Manual



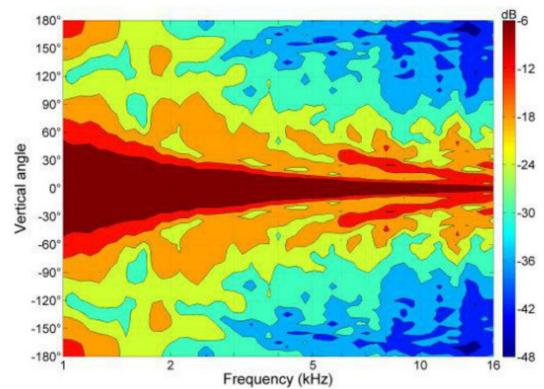
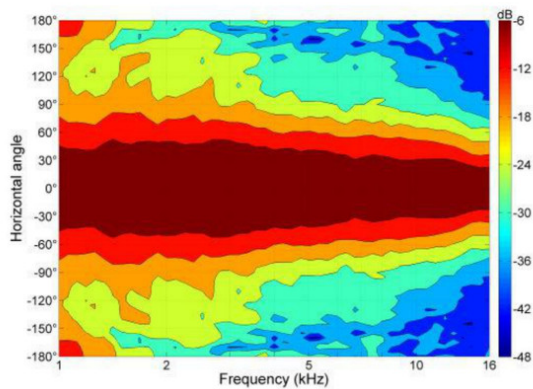
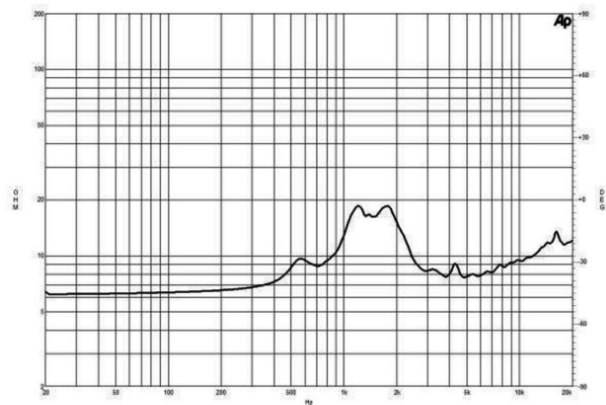
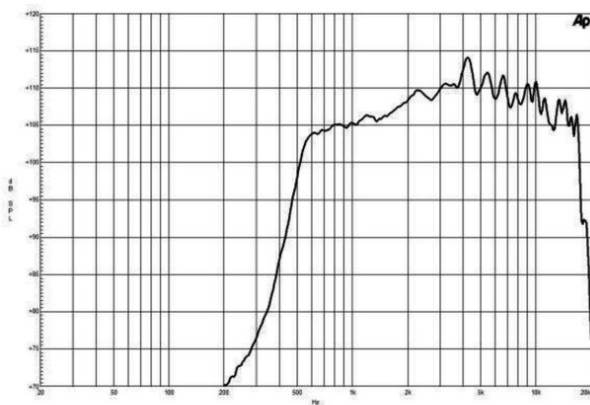
Contents

- [1 WG400 Line Array Sources](#)
- [2 SPECIFICATIONS](#)
- [3 MOUNTING AND SHIPPING INFO](#)
- [4 Documents / Resources](#)
- [5 Related Posts](#)

WG400 Line Array Sources



- Line Array optimized Waveguide with DE400 driver
- 140° max horizontal coverage
- 100 W continuous program power capacity
- 44 mm (1.7 in) aluminum voice coil
- Polyimide diaphragm
- 1200 – 18000 Hz response
- 108.5 dB sensitivity
- Compact Neodymium magnet assembly



SPECIFICATIONS

Horizontal Coverage	140 ° Max
Active Radiating Factor	92.5 %
Recommended Crossover ¹	1.5 kHz
Waveguide Material	Cast Aluminium
Nominal Impedance	8 Ω
Minimum Impedance	7.7 Ω
Nominal Power Handling ²	50 W
Continuous Power Handling ³	100 W
Sensitivity ⁴	108.5 dB
Frequency Ranges	1.2 – 18.0 kHz
Voice Coil Diameter	44 mm (1.7 in)
Winding Material	Aluminum
Diaphragm Material	Polyimide
Flux Density	1.8 T
Magnet Material	Neodymium Ring

MOUNTING AND SHIPPING INFO

Exit Size	102×25 mm (4×1 in)
Driver Diameter	86 mm (3.3 in)
Dimensions	111x87x155 mm (4.4×3.5×6.1 in)
Net Weight	1.3 kg (2.9 lb)
Shipping Units	4
Shipping Weight	5.8 kg (12.79 lb)
Shipping Box	265x245x240 mm (10.43×9.65×9.45 in)

1. 12 dB/Oct. Or higher slope high-pass filter.
2. 2-hour test made with continuous pink noise signal (6 dB crest factor) within the range from the recommended crossover frequency to 20 kHz. Power is calculated on rated minimum impedance.
3. Power on a Continuous Program is defined as 3 dB greater than the Nominal rating.
4. Applied RMS Voltage is set to 2.83 V for 8 ohms Nominal Impedance.
5. Waveguide mounted on 90°x10° bell horn

B&C Speakers s.p.a.
Via Poggiomoro, 1 – Loc.
Vallina, 50012 Bagno a Ripoli (FI)
ITALY – Tel. +39 055 65721
– Fax +39 055 6572312
– mail@bcspeakers.com

Documents / Resources



[B C SPEAKERS WG400 Line Array Sources](#) [pdf] User Manual
WG400 Line Array Sources Speakers, WG400, Line Array Sources Speakers, Array Sources

Manuals+.