




## AZZA CSAZ-902 Luxurious Cube Case with Infinity Mirror Instruction Manual

[Home](#) » [AZZA](#) » AZZA CSAZ-902 Luxurious Cube Case with Infinity Mirror Instruction Manual 



Model

Model Name	Regis
Model Number	CSAZ-902

Contents

- 1 Specifications
- 2 Features
- 3 Documents / Resources
- 4 Related Posts

Specifications

Type	ATX Cube Enclosure
Color	Smoke Gray with Gold trim and Black glass (exterior) / Black (interior)
Side Panels	3 Tempered glass panels 2 Anodized brushed-aluminum side panels
Max CPU Cooler Height	UP to 210mm
Max Video Card Length	Up to 336mm (Horizontal) Up to 320mm (Vertical)
Power Supply	Not Included
Motherboard Compatibility	ATX, Micro-ATX, Mini-ITX

Expansion

External 5.25" Drive Bays	0
Internal 2.5" Drive Bays	Up to 2
Internal 3.5" Drive Bays	1
Expansion Slots	7 (Horizontal) + 3 (Vertical)
I/O Ports	The power button, LED button, HD Audio, USB 3.0 x2, Type C x1

Lighting Effects

Digital RGB Lighting Effects	An infinity mirror lighting design. Digital RGB lighting devices can be controlled through motherboard software through the
------------------------------	---

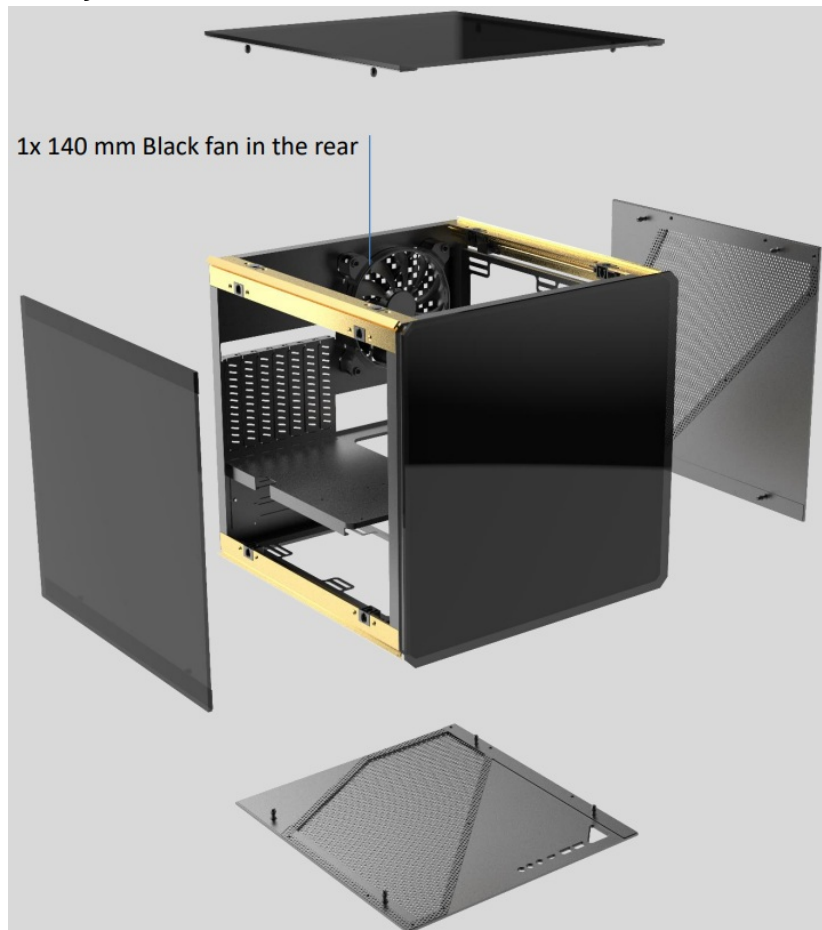
Physical Specifications

Dimensions with Case Stand (HxWxD)	610 x 481 x 529 mm / 24 x 19 x 21 inches
Weight	12.5 kg / 27.6lbs

## Features

Tempered Glass	High-quality tempered glass side panels allow for clear visuals
Available Fan Ports	2x 120 mm or 2x 140 mm ports on the right 2x 120 mm or 2x 140 mm ports on the left 1x 120 mm or 1x 140 mm port in the rear
Included Fan	1x 140 mm Black fan in the rear
Radiator Support	Supports radiators up 240 mm / 280 mm on the right Supports radiators up 240 mm / 280 mm on the left
Accessories	1x Case Stand 1x , AZZA Hub NG:12.5kg , WG:16kg

### 1. Side panels can be easily disassembled.



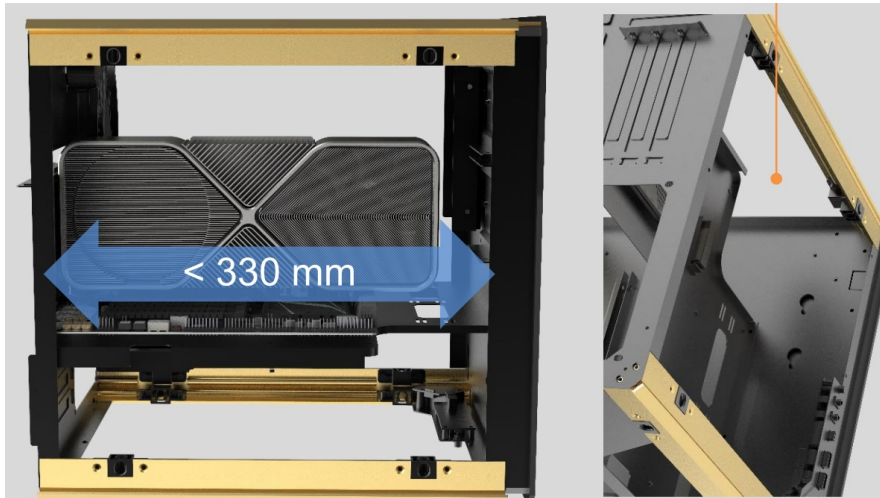
### 2. Motherboard Installation.



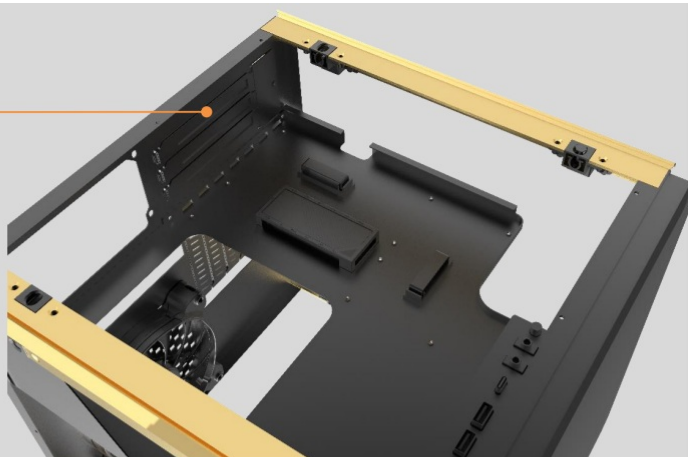
**3. Graphics cards have two options for location :**

1. On the motherboard
2. On the side by connecting PCI-E cable.

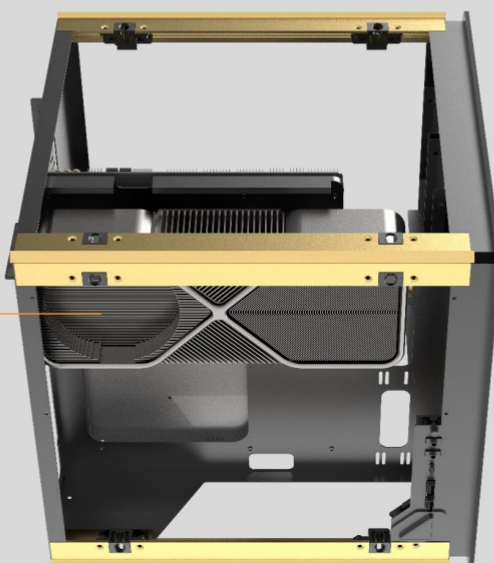
PS: If the length is  $>300$ , the SSD tray needs to be removed.  $< 330$  mm



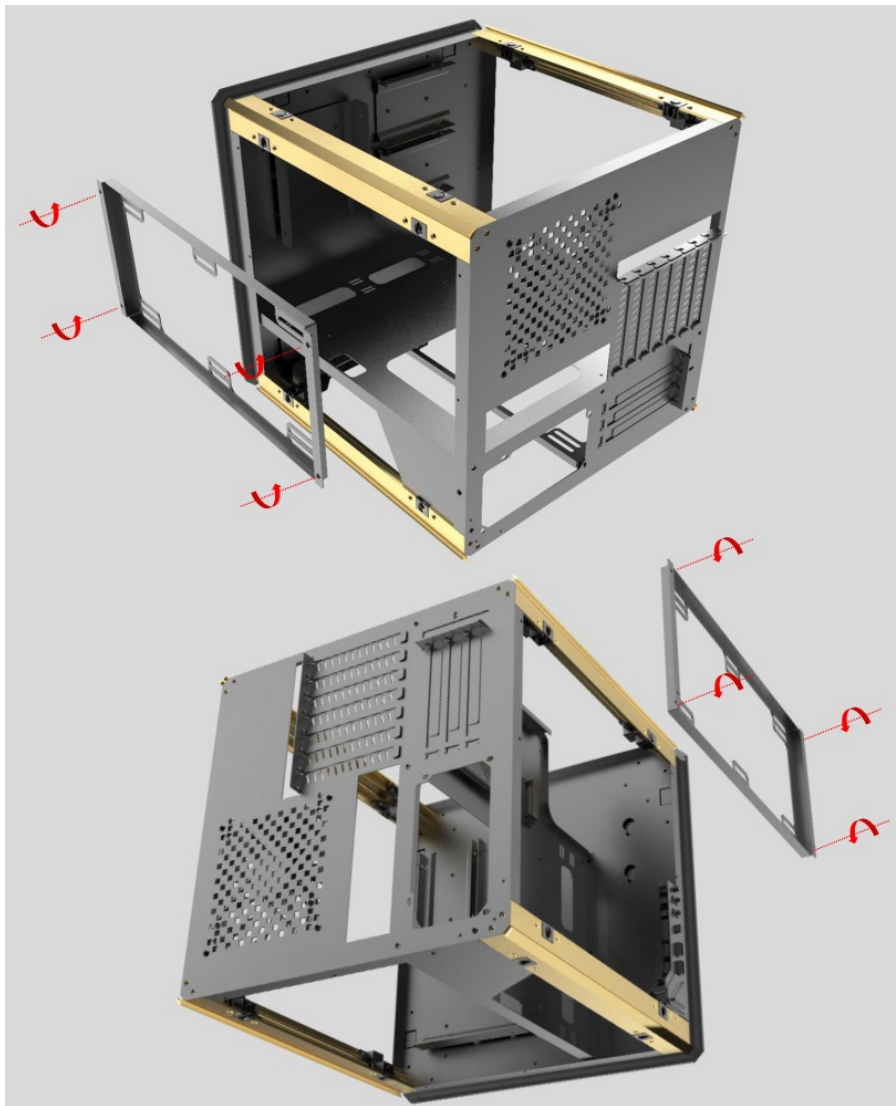
**4. Another graphics card installation :**



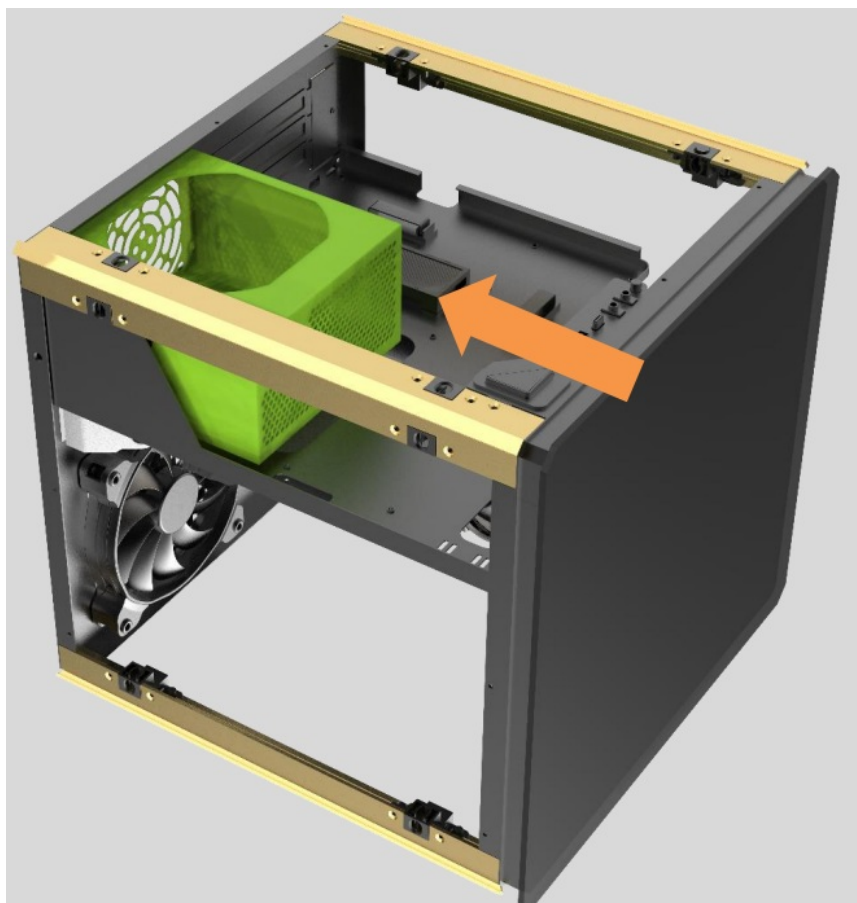
- You can install it here to increase the heat dissipation of the graphics card.



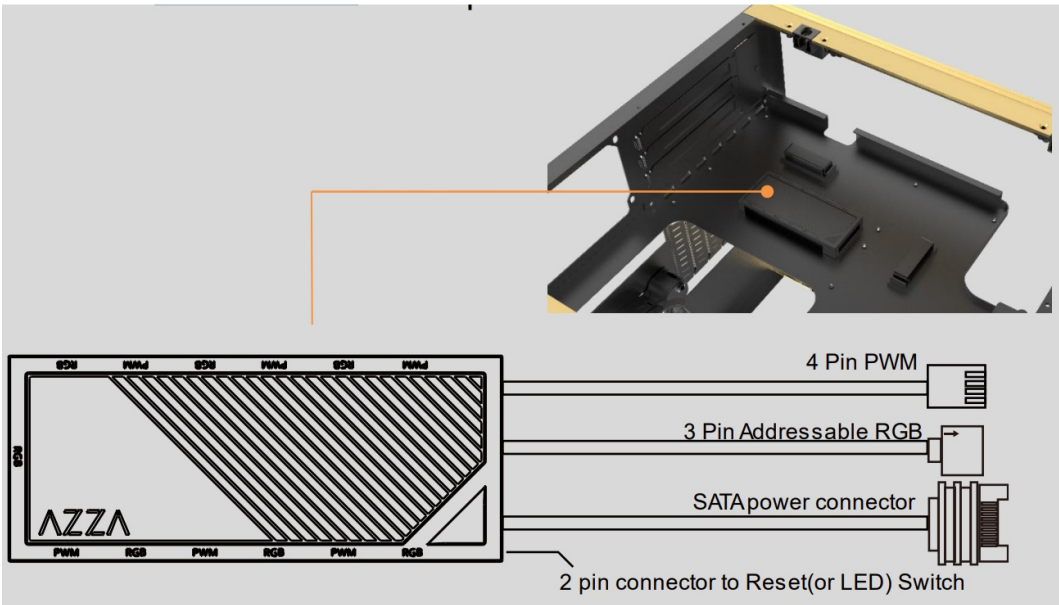
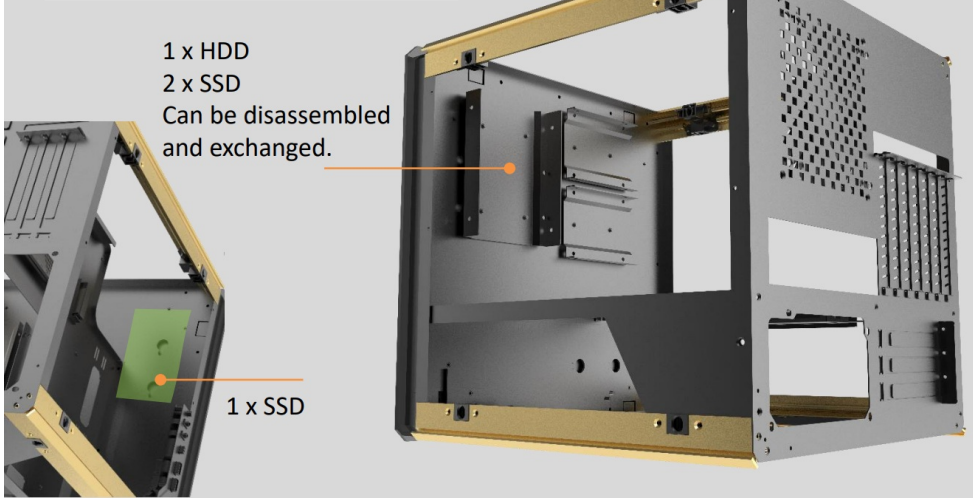
5. Supports radiators up 240 mm / 280 mm on the right  
 Supports radiators up 240 mm / 280 mm on the left



## 6. Power supply Installation.







- (Hold the LED button for 2 seconds to switch the PCB control function between motherboard and

A) Magnet on the back of the hub box or using velcro on the back of the hub box, it can be put in anyplace inside the metal part of the case.

B.) 6 sets of RGB port next to the PWM port to ease the connection on fans.

## Documents / Resources



[AZZA CS AZ-902 Luxurious Cube Case with Infinity Mirror](#) [pdf] Instruction Manual  
CSAZ-902, Luxurious Cube Case with Infinity Mirror

Manuals+.