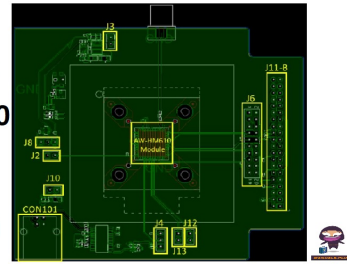




**AW-HM610**  
**MHz**  
**Channel**  
**Bandwidth**



# AzureWave AW-HM610 MHz Channel Bandwidth User Guide

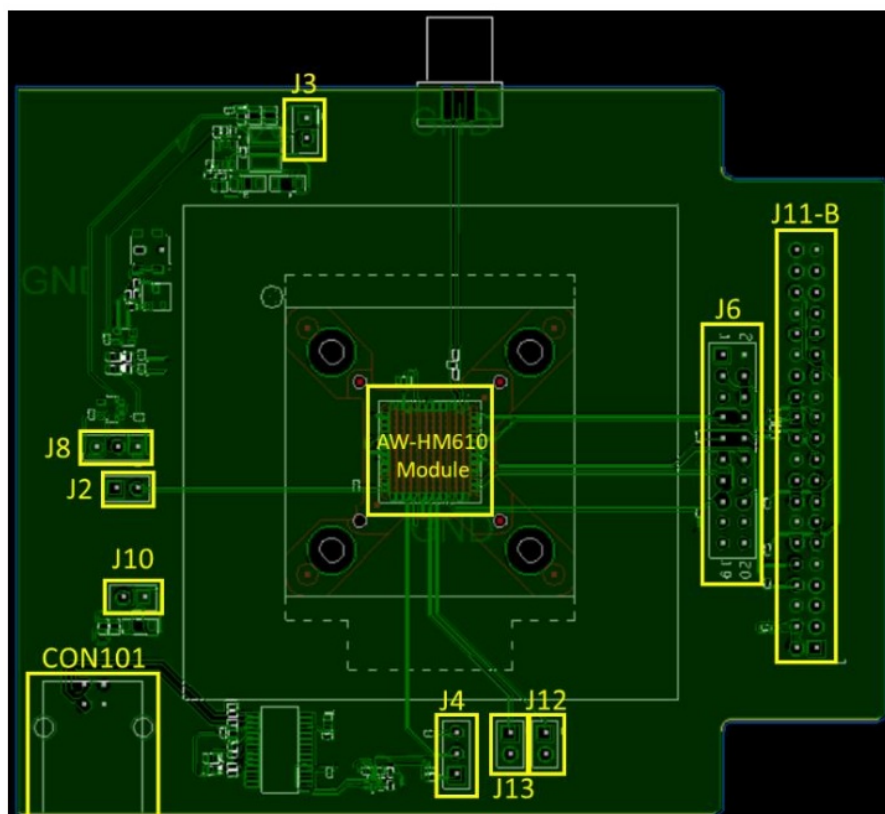
[Home](#) » [AzureWave](#) » AzureWave AW-HM610 MHz Channel Bandwidth User Guide 

## Contents

- [1 AzureWave AW-HM610 MHz Channel Bandwidth](#)
- [2 Overview](#)
- [3 Dimensions](#)
- [4 Documents / Resources](#)
  - [4.1 References](#)
- [5 Related Posts](#)



**AzureWave AW-HM610 MHz Channel Bandwidth**



The information contained herein is the exclusive property of AzureWave and shall not be distributed, reproduced, or disclosed in whole or in part without prior written permission of AzureWave.

## Revision History

Version	Revision Date	Description	Initials	Approved
01	2023/11/30	Initial Version	Daniel Lee	N.C. Chen

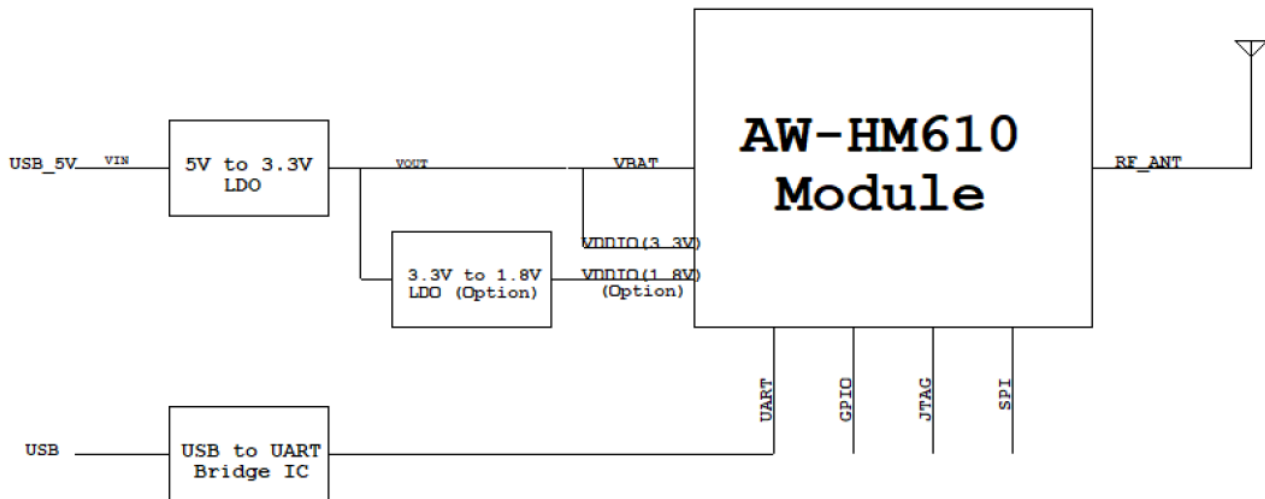
## Overview

### Device supported

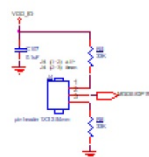
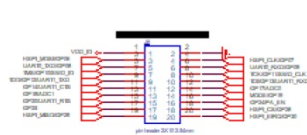
This document is used for AW-HM610.

### Reference Design

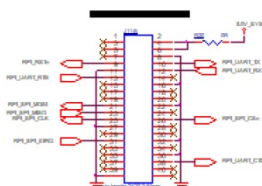
Please see the below pages.



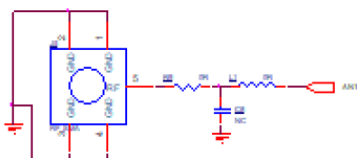
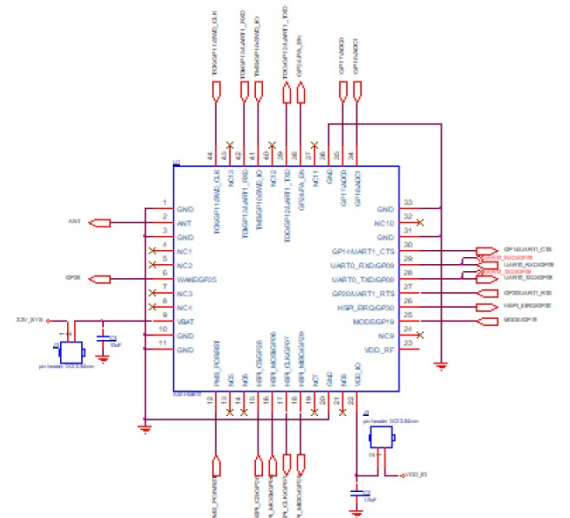
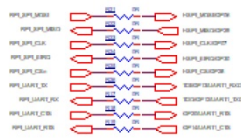
Title		
Title Page		
Size A3	Document Number RD2-2610-I1	Rev A
Date: Thursday, November 30, 2023	Sheet 1 of 3	



## MODE SELECT



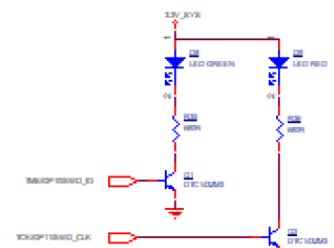
## RASPBERRY IF 3.3V



## ANTENNA CON

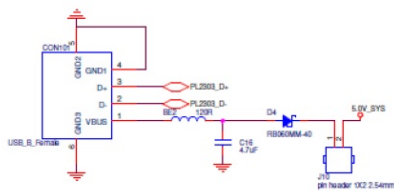


## Reset

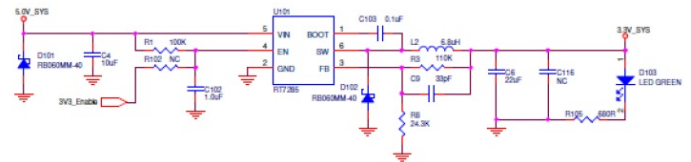


## Indicate

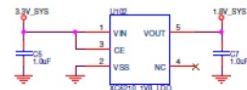
## Dimensions



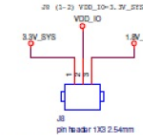
**EXT POWER**



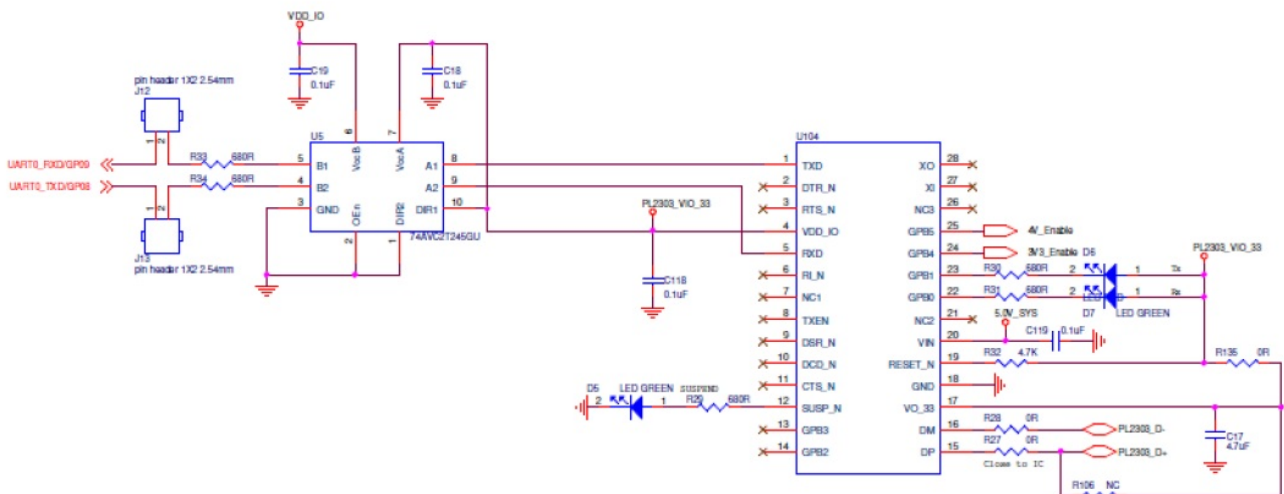
**3.3V POWER**



**1.8V POWER**




**IO VOLTAGE SELECT**



**UART TO USB**

The information contained herein is the exclusive property of AzureWave and shall not be distributed, reproduced, or disclosed in whole or in part without prior written permission of AzureWave.

## Documents / Resources

 <p><b>AW-HM610</b></p> <p>Reference Design Guide</p> <p>Rev. 01</p> <p>July 2020</p>	<p><a href="#">AzureWave AW-HM610 MHz Channel Bandwidth [pdf] User Guide</a></p> <p>AW-HM610 MHz Channel Bandwidth, AW-HM610, MHz Channel Bandwidth, Channel Bandwidth h, Bandwidth</p>
--	---

## References

- [User Manual](#)

[Manuals+](#), [Privacy Policy](#)

This website is an independent publication and is neither affiliated with nor endorsed by any of the trademark owners. The "Bluetooth®" word mark and logos are registered trademarks owned by Bluetooth SIG, Inc. The "Wi-Fi®" word mark and logos are registered trademarks owned by the Wi-Fi Alliance. Any use of these marks on this website does not imply any affiliation with or endorsement.