



**SMA-SL-01 Smart  
Christmas Star Tree  
String Lights**

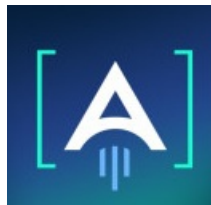


# AZRIAN SMA-SL-01 Smart Christmas Star Tree String Lights User Manual

[Home](#) » [AZRIAN](#) » AZRIAN SMA-SL-01 Smart Christmas Star Tree String Lights User Manual 

## Contents

- [1 AZRIAN SMA-SL-01 Smart Christmas Star Tree String Lights](#)
- [2 Installation](#)
  - [2.1 Frequently Asked Questions](#)
- [3 Documents / Resources](#)
  - [3.1 References](#)
- [4 Related Posts](#)



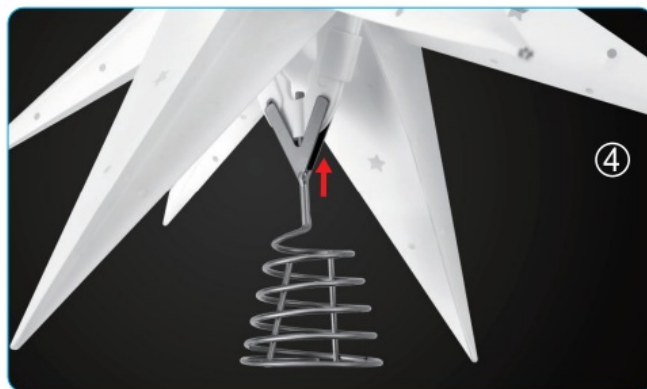
**AZRIAN SMA-SL-01 Smart Christmas Star Tree String Lights**



- Category: String Lights
- Model Number: SMA-SL-01
- Domination Principle: Ble
- APP: Surplife
- Power Supply: Our Plug Makes Input AC 120V Reduced To DC 5V for Safety
- Supported Driver IC: SM16703P, WS2812E, UC1903B, ASL140140, IC2811F, TM1814, WS2815B, WS2812B, SM16703, SM16704, WS2811, UCS1903, SK6812, INK1003, UCS2904B
- Working Temperature : -20~+55°C
- Control Distance: Visible distance 30M
- Dimension: 20.3cm/7.99in Diameter, 34.5cm/13.58in Diameter, 50cm/19.68in Diameter

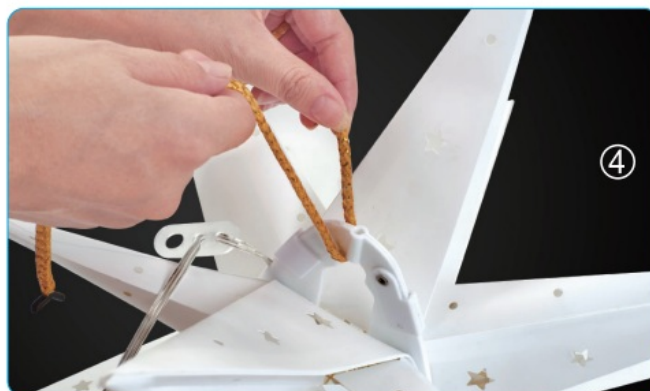


## Installation



#### Way 1:

1. Roll the flexible star page until the two plastic laminates are in one plane;
2. Open the buckle of the plastic plate, align the plastic plat;
3. Close the buckle;
4. Find the base and insert the top rod deeply into the bottom of the star.

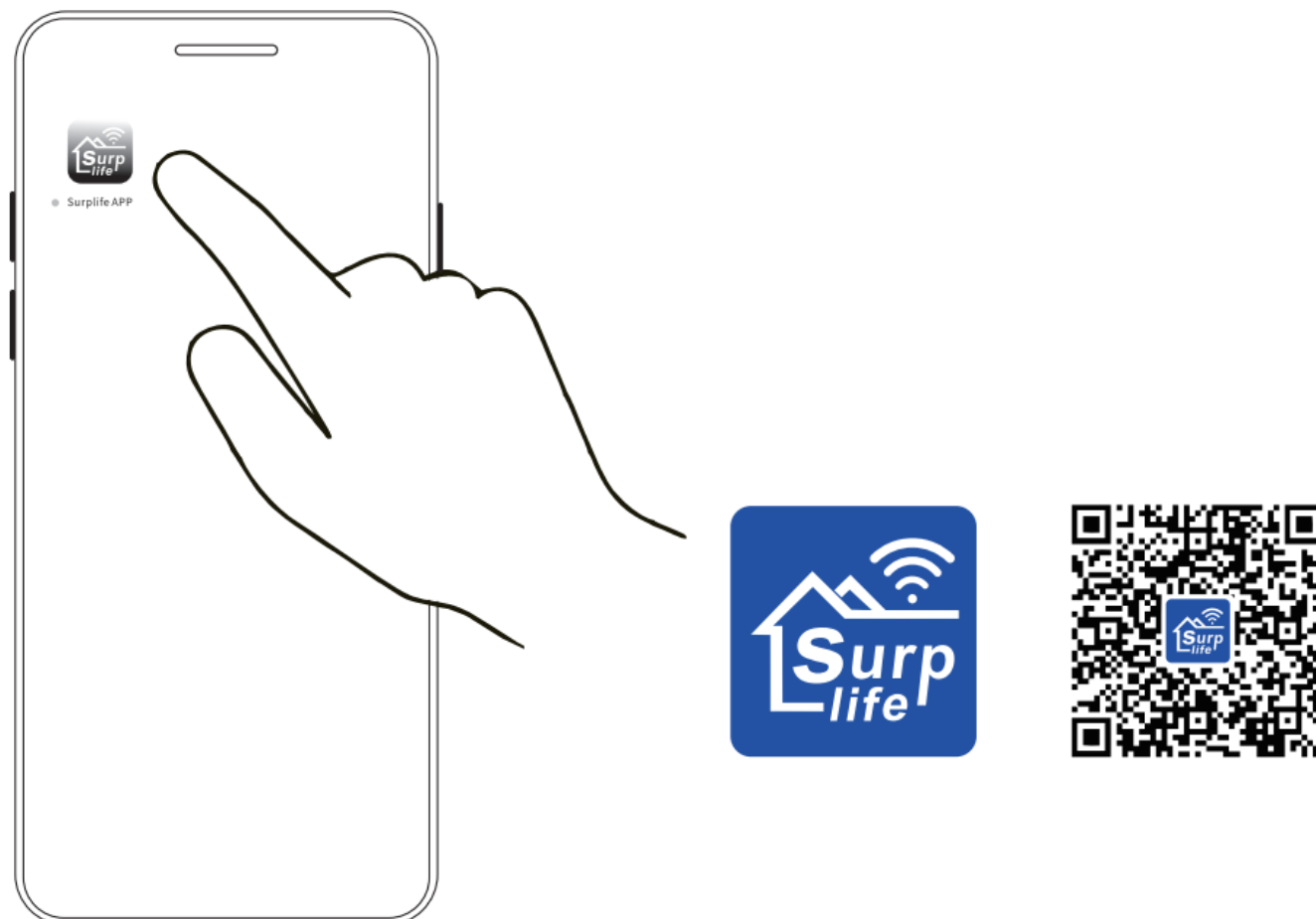


#### Way 2:

1. Roll the elastic star page until the two plastic laminates are on a flat surface;
2. Open the buckle of the plastic plate, align the plastic plate;
3. Close the buckle;
4. Using some auxiliary tools (not included), hang the stars in the appropriate positions using the grooves in the plastic board.

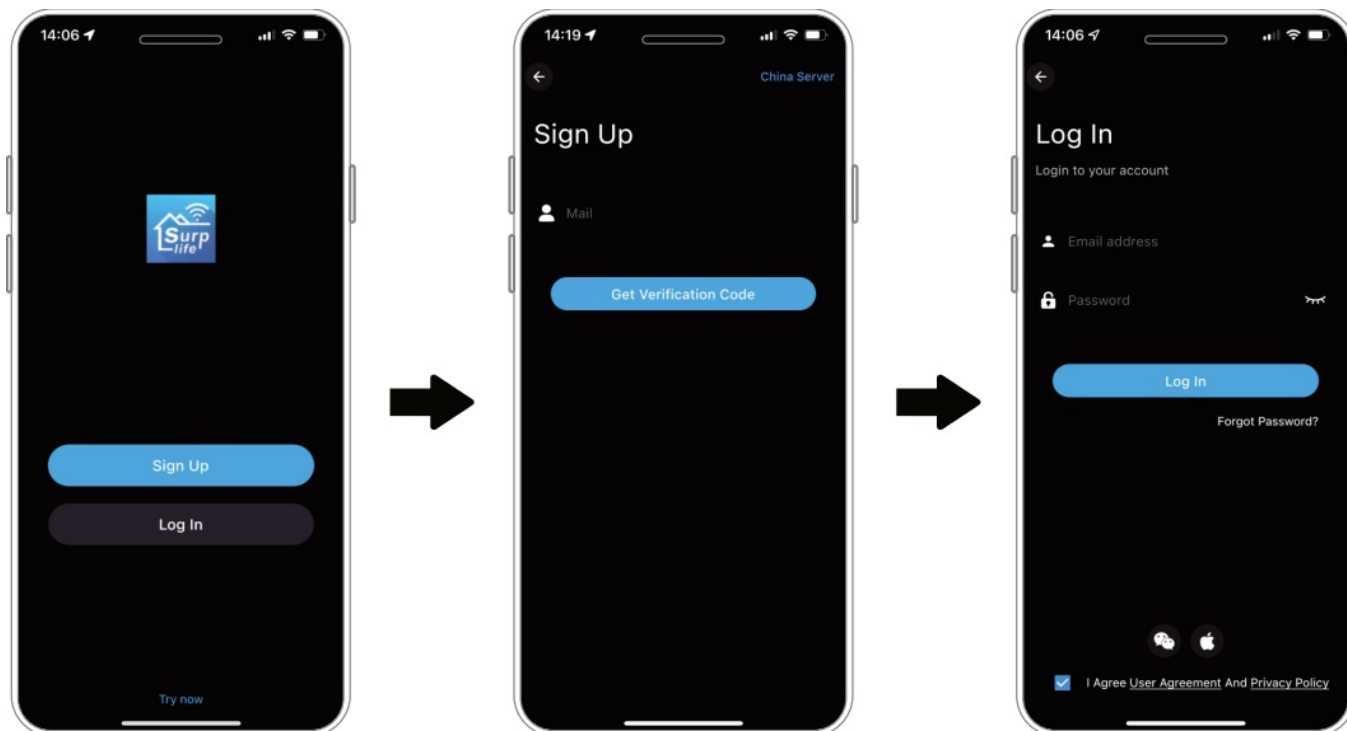
### **Download Surplife APP**

Download “Surplife” in App Store, register and make sure Bluetooth of mobile phone is turned on.

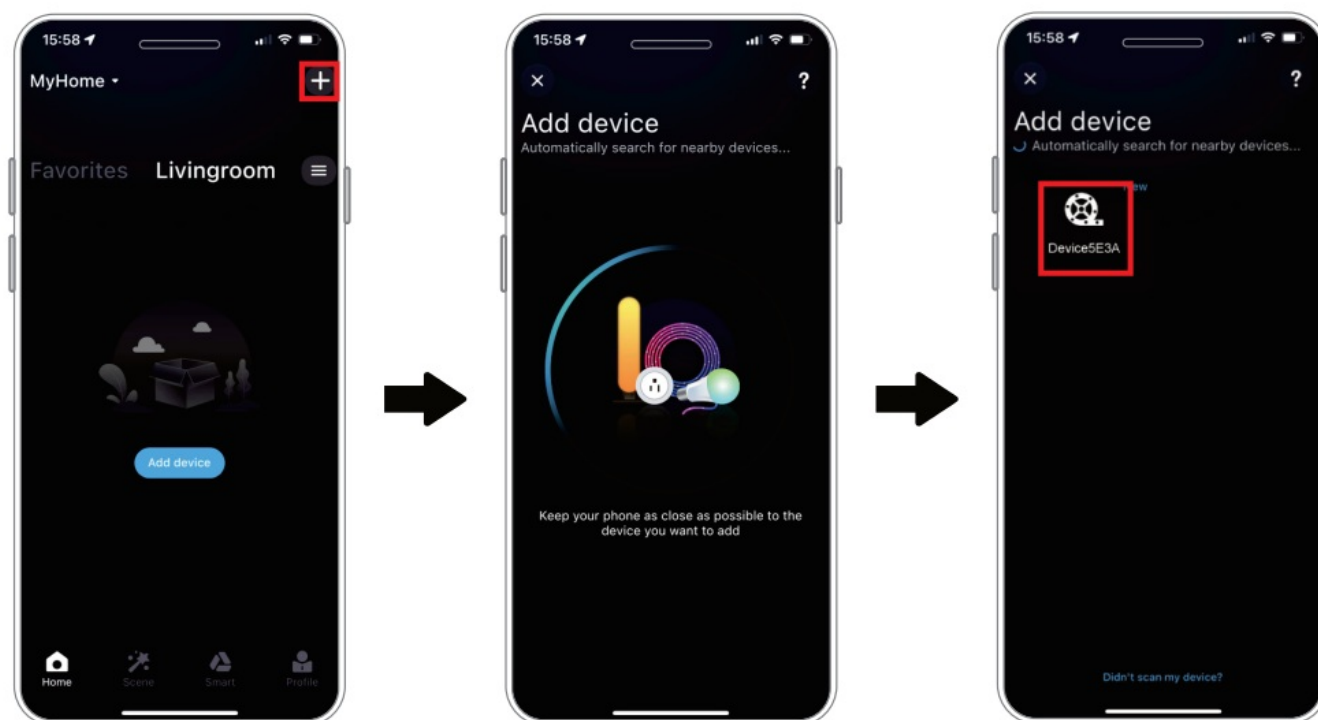


### **How to Connect to Surplife APP**

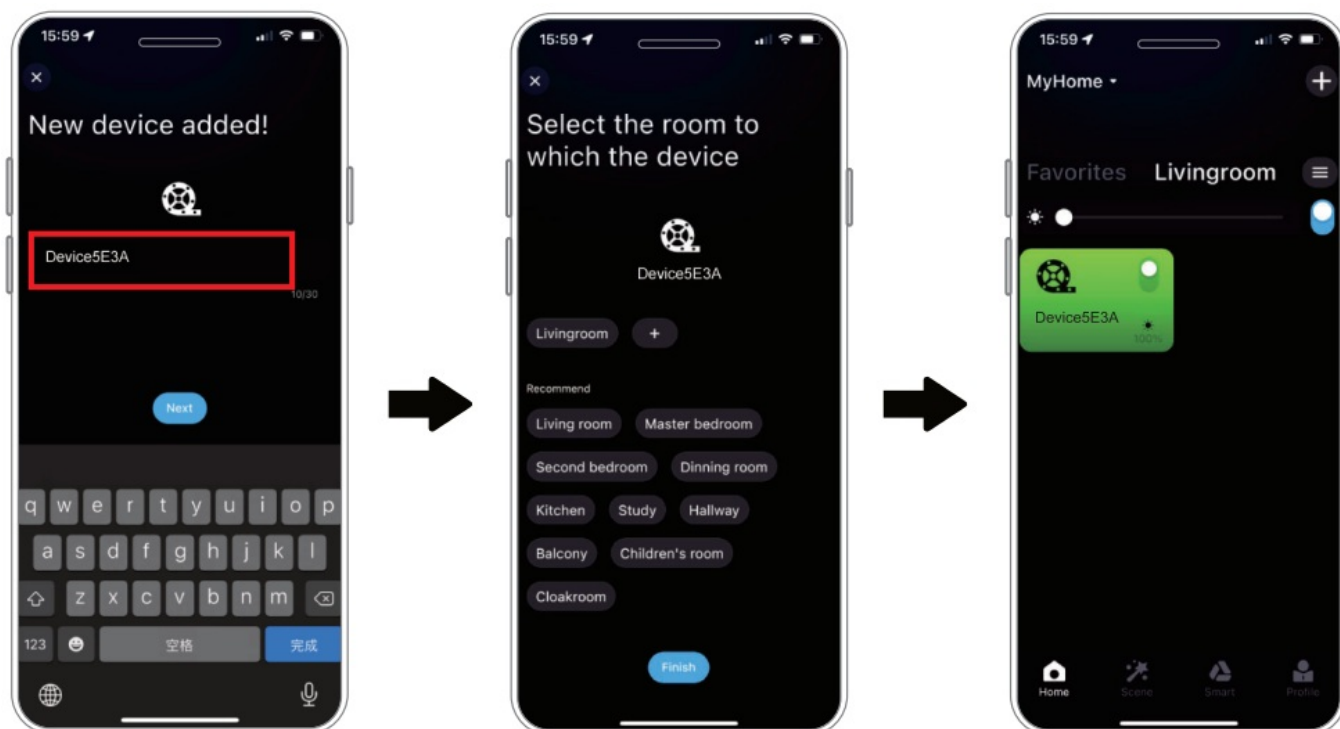
Register/Login your Surplife account.



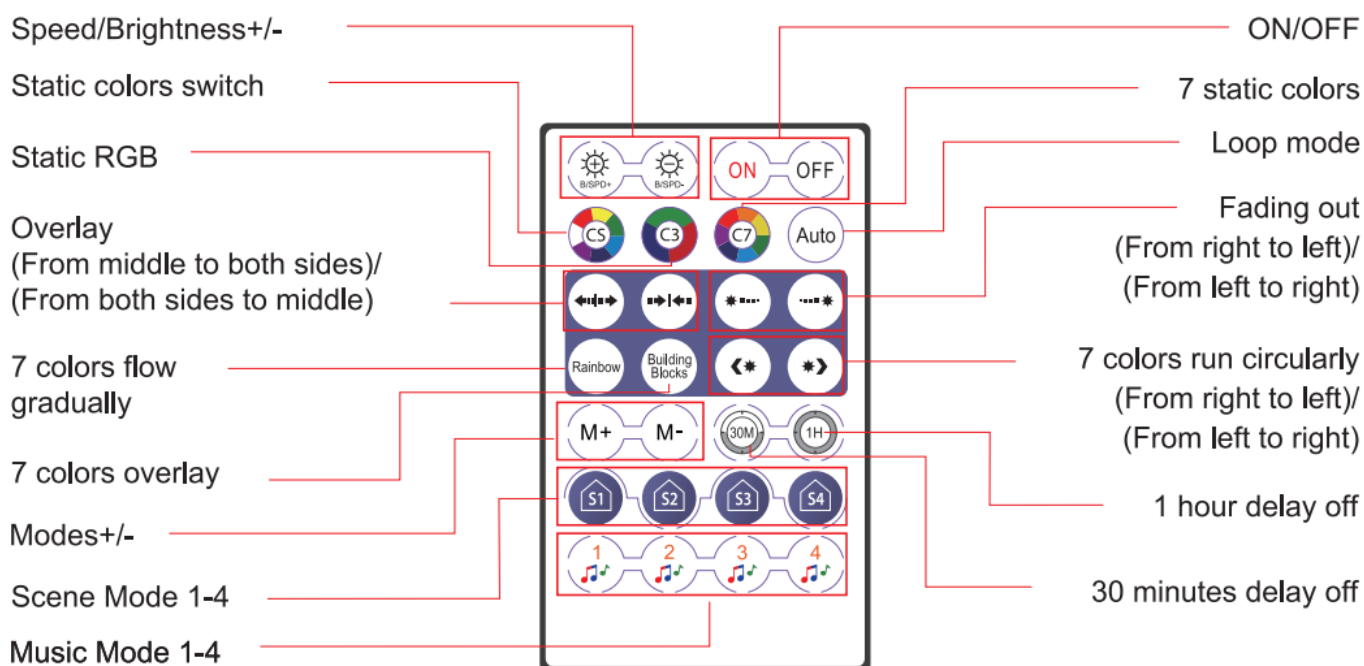
Enter “Surplife” app, tap “add device” or click”+” to add the device.



Rename the device and select a room for it.



## Remote Control



## FCC WARNING

- This device complies with part 15 of the FCC Rules. Operation is subject to the following two conditions: (1) this device may not cause harmful interference, and (2) this device must accept any interference received, including interference that may cause undesired operation.
- Any changes or modifications not expressly approved by the party responsible for compliance could void the user's authority to operate the equipment.

**NOTE:** This equipment has been tested and found to comply with the limits for a Class B digital device, pursuant to Part 15 of the FCC Rules. These limits are designed to provide reasonable protection against harmful



interference in a residential installation. This equipment generates, uses and can radiate radio frequency energy and, if not installed and used in accordance with the instructions, may cause harmful interference to radio communications. However, there is no guarantee that interference will not occur in a particular installation. If this equipment does cause harmful interference to radio or television reception, which can be determined by turning the equipment off and on, the user is encouraged to try to correct the interference by one or more of the following measures:

- Reorient or relocate the receiving antenna.
- Increase the separation between the equipment and receiver.
- Connect the equipment into an outlet on a circuit different from that to which the receiver is connected. — Consult the dealer or an experienced radio/TV technician for help.
- To maintain compliance with FCC's RF Exposure guidelines, this equipment should be installed and operated with minimum 20cm distance between the radiator and your body: Use only the supplied antenna.

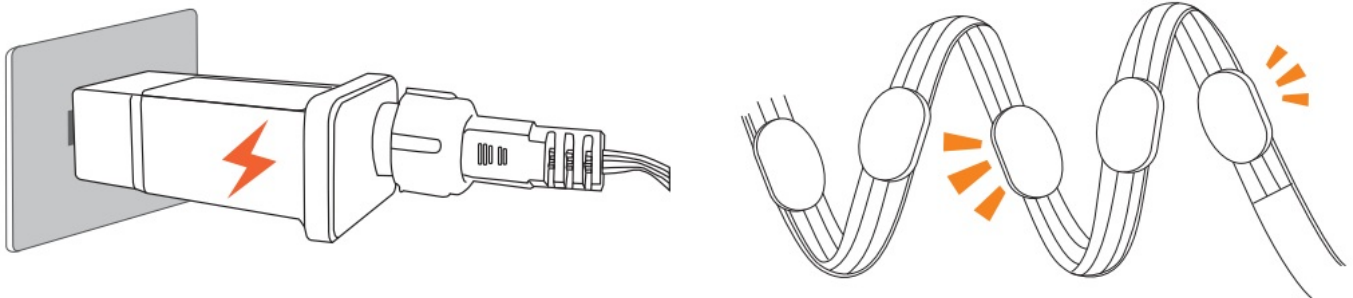
## Frequently Asked Questions

### How to set up your Bluetooth LED string light?


- Enable your Bluetooth on your phone.
- Then power on the LED string light.
- Open "Surplife" App, the App can directly connect to the device. It can automatically match the light with-out other steps, and you can experience the smart light simply and quickly.

### How can i do if connecting the Bluetooth device or adding new device failed?

Please power off the led string light, then turn it on again, if the problem can't solve, please restart the phone.



## Documents / Resources

	<p><a href="#">AZRIAN SMA-SL-01 Smart Christmas Star Tree String Lights</a> [pdf] User Manual SMA-SL-01, SMA-SL-01 Smart Christmas Star Tree String Lights, Smart Christmas Star Tree String Lights, Christmas Star Tree String Lights, Star Tree String Lights, String Lights, Lights</p>
---	--

## References

- [User Manual](#)

## **Manuals+. Privacy Policy**

This website is an independent publication and is neither affiliated with nor endorsed by any of the trademark owners. The "Bluetooth®" word mark and logos are registered trademarks owned by Bluetooth SIG, Inc. The "Wi-Fi®" word mark and logos are registered trademarks owned by the Wi-Fi Alliance. Any use of these marks on this website does not imply any affiliation with or endorsement.