

Azores Networks WAGM51W6 Xgspon Ont Unit User Manual

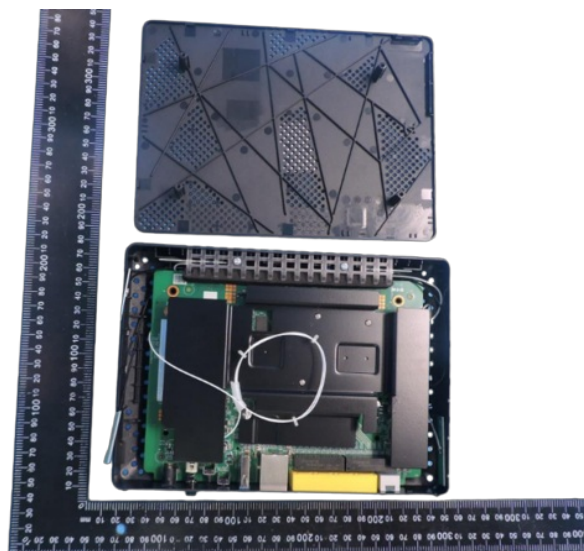
[Home](#) » [Azores Networks](#) » Azores Networks WAGM51W6 Xgspon Ont Unit User Manual 

Contents

- [1 Azores Networks WAGM51W6 Xgspon Ont Unit](#)
- [2 Product Information](#)
- [3 Product Usage Instructions](#)
- [4 Safety Instructions](#)
- [5 Product Overview](#)
- [6 Safety Instructions](#)
- [7 Cable Connection](#)
- [8 FCC Caution](#)
- [9 Documents / Resources](#)
 - [9.1 References](#)
- [10 Related Posts](#)



Azores Networks WAGM51W6 Xgspon Ont Unit



Product Information

The XGSPON WAGM51W6 is an ONT (Optical Network Terminal) unit that is compliant with ITU-T G.988 and ITU-T G.9807.1 XGSPON standards. It is designed to provide high-speed internet connectivity and various other features for high-end home users. The ONT unit includes the following components:

- WAGM51W6 XGSPON ONT Unit
- Power Adapter
- RJ-45 Ethernet Cable
- User Manual

The key features of the XGSPON WAGM51W6 ONT unit are:

- Four GE ports for Ethernet connectivity
- One 10G port for high-speed data transfer
- One USB port for connecting external devices
- One POTS port for telephone connectivity
- Wi-Fi 802.11ax support for both 2.4GHz and 5GHz frequencies
- Supports desktop mounting or wall mounting options

Product Usage Instructions

Cable Connection

Connect Ethernet Cable

If needed, connect the LAN port of the WAG-M51W6 to a PC using a standard RJ-45 Ethernet Cable.

Connect Fiber Optical Cable

Connect the fiber optical port of the WAG-M51W6 (located at the bottom of the device) to the XGS-PON OLT (Optical Line Terminal) using a fiber optical cable.

Connect Power Adapter:

Connect the power interface of the WAG-M51W6 to a power outlet using the provided power adapter. Ensure that you use the specified power adapter provided in the packaging box. Then, turn on the power switch of the WAG-M51W6.

LED Status

LED	Color	Description
Power	Green	The device is powered on.
XGS-PON	Green	The device has completed the registration process and the received XGS-PON optical power is normal.
LOS	Red	The device has not started the registration process or the received XGSPON optical power is lower than the sensitivity of the optical receiver.
Internet	Green	The device is registering.
LAN	Green	The device has completed the registration process and is ready for LAN connectivity.
WPS	Green	The device supports Wi-Fi Protected Setup.
2.4GHz	Green	The device supports Wi-Fi connectivity on the 2.4GHz frequency.
5GHz	Green	The device supports Wi-Fi connectivity on the 5GHz frequency.

Safety Instructions

Please read the safety instructions carefully before using the device:

1. Keep the power adapter, cables, and hands clean and dry to avoid electric shock and other dangers.
2. Only use the standard power adapter provided in the packaging box to prevent abnormal device operation or damage.
3. Do not open the cover of the device, especially when it is powered on, as it can be dangerous.
4. If the device is not used for a long time, turn off the power.
5. If the device is in an abnormal state (e.g., too hot, strange smell, or smoke), quickly power off the device and contact the service provider.
6. Keep the device away from hot sources and water.
7. Do not cover the cooling holes of the device.
8. Follow local equipment handling regulations and protect the environment.
9. If you need to clean the dust from the equipment, cut off the power supply first, unplug the relevant connecting cable, and then use a dry cloth. Do not use any liquid.

Package Lists

Item	Quantity
WAGM51W6 XGSPON ONT Unit	1
Power Adapter	1
RJ-45 Ethernet Cable	1
User Manual	1

Product Overview

The WAGM51W6 is an ITU-T G.988 and ITU-T G.9807.1 XGSPON compliant ONT. The ONT provides customer with four GE ports, one 10G port, 1 USB port, 1 POTS port, Wi-Fi 802.11ax 2.4GHz& 802.11ax 5GHz concurrent. Its characteristics of high bandwidth and low latency can meet the needs of high-end home users. And it supports desktop mounting or wall mounting

Interface

Device Interface	Description
Fiber Optical interface	1*SC/APC optical interface for fiber connection. Supports XGSPON (Transmitting: 1270nm, Receiving: 1577 nm)
LAN	4*GE Ethernet supports 10/100/1000-Base-T, 1*10GE supports 100/1000/10000-Base-T, interface with RJ-45 connector, full duplex and flow control, auto negotiation or manual configuration and supports MDI/MDIX auto-sensing
Power	12V Power Input Interface 1* DC Jack for power input
Phone	1*POTS interfaces with RJ-11 connector
USB	1*USB 2.0 port

Technical Specification

Item	Description
Dimension	40mm×220mm×160mm (Height×Width×Depth)
Rated Voltage	12V
Rated Current	2.5A
Operation Temperature	0°C to 45°C
Storage Temperature	-20°C to 65°C

Safety Instructions

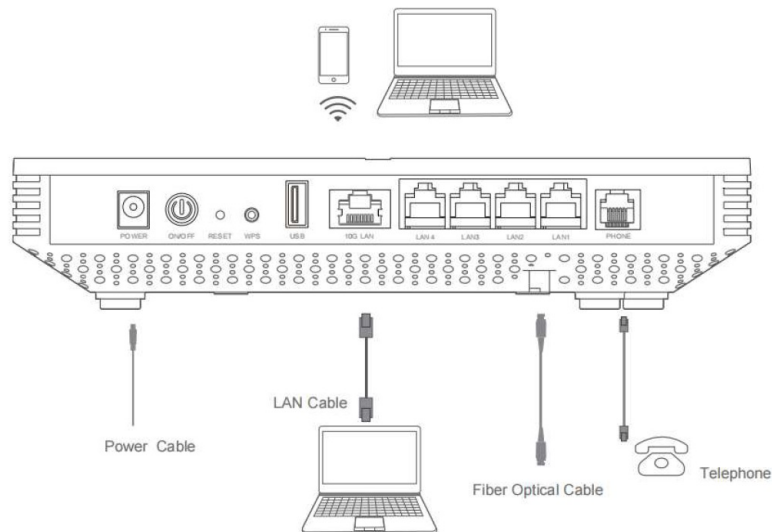
Please read the safety instructions carefully before using the device.

1. Please keep the power adapter and cables and hands clean and dry to avoid the electric shock and other dangers.
2. Please only use the standard power adapter provided in the packaging box, otherwise, the device may work

abnormally or even be damaged.

3. Please don't open the cover of the device, especially when the device is powered on. It can be dangerous to do so.
4. If do not use the device for a long time, please turn off the power.
5. If find the device is in an abnormal state, such as too hot, strange smell or smoke, please power off the device quickly and feed back to the service provider.
6. Please keep the device away from any hot source and water.
7. Please don't let anything cover the cooling holes of the device.
8. Observe local equipment handling regulations and protect the environment.
9. If need to clean the dust of the equipment, please cut off the power supply first and unplug the relevant connecting cable, then use dry cloth to clean, do not use any liquid.

Cable Connection



Connect Ethernet Cable

If needed, connect LAN port of WAG-M51W6 to PC via standard RJ-45 Ethernet Cable.

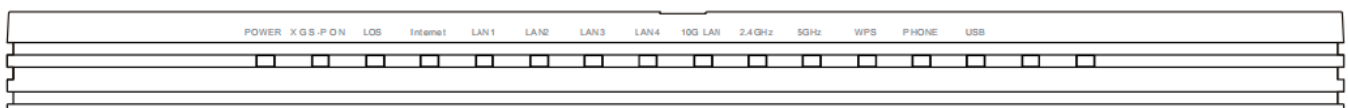
Connect Fiber Optical Cable

Connect the fiber optical port of WAG-M51W6 (at the bottom of the device) to XGS-PON OLT via fiber optical cable.

Connect Power Adapter

Connect the power interface of WAG-M51W6 to a power outlet via the provided power adapter (Please don't use other specifications of power adapter), then turn on the power switch of WAG-M51W6.

LED



LED	Color	State	Description
Power	Green	Off	The device is powered off.
		On	The device is powered on.
XGS-PON	Green	Off	The device has not started the registration process.
		Flashing	The device is registering.
		On	The device has completed the registration process.
LOS	Red	Off	The received XGS-PON optical power is normal.
		Flashing	The received XGSPON optical power is lower than the sensitivity of the optical receiver.
Internet	Green	Off	The device has no internet connection.
		On	The device has connected to the Internet (the correct IP address has been obtained or the bridge link is normal).
LAN	Green	Off	The LAN connection is not established.
		Flashing	Data is transmitted or received through this Ethernet interface.
		On	The LAN connection is established but no data is transmitted/received.
WPS	Green	Off	WPS is disabled.
		Flashing	The device is performing code matching.
		On	Code matching successful.
2.4GHz	Green	Off	The Wi-Fi interface is disabled.
		Flashing	Data is being transmitted.
		On	The Wi-Fi interface is enabled.
		Off	The Wi-Fi interface is disabled.

5GHz	Green	Flashing	Data is being transmitted.
		On	The Wi-Fi interface is enabled.

Phone	Green	Off	The device is unable to register on the soft switch/IMS.
		Flashing	Voice service is being provided.
		On	The device has registered on the soft switch/IMS but no voice service.
USB	Green	Off	USB device not connected.
		On	USB device connected.

Buttons

Button	Function
Power Button	Power on and off the WAGM51W6 device.
WPS	Set the WPS process.
Reset	Short press (1 second) for reboot WAG-M51W6 device; Long press (10 seconds or longer) for reset to factory default settings.

Troubleshooting

The Power LED on the front panel is off after pressing the Power switch. Verify that the power adapter is connected correctly to the device. Be sure to use the supplied power adapter with the device. The XGS-PON LED on the front panel is off or green flashing after the device is powered on.

- The XGS-PON link is not established.
- The ONT is not registered.
- Contact the service provider for help.

The LAN LED on the front panel is off after the device is powered on.

- The corresponding LAN is not established.
- The Ethernet cable is not connected correctly.
- The network device connected to the LAN is not powered on.

The LOS LED on the front panel is flashing red after the device is powered on.

- The optical fiber cable is broken or damaged.

- The optical fiber cable is not connected to ONT XGSPON device correctly.
- Please contact the service provider if the LED is flashing red.

FCC Caution

This device complies with part 15 of the FCC Rules. Operation is subject to the following two conditions: (1) This device may not cause harmful interference, and (2) this device must accept any interference received, including interference that may cause undesired operation. Any Changes or modifications not expressly approved by the party responsible for compliance could void the user's authority to operate the equipment. **Note:** This equipment has been tested and found to comply with the limits for a Class B digital device, pursuant to part 15 of the FCC Rules. These limits are designed to provide reasonable protection against harmful interference in a residential installation. This equipment generates uses and can radiate radio frequency energy and, if not installed and used in accordance with the instructions, may cause harmful interference to radio communications. However, there is no guarantee that interference will not occur in a particular installation. If this equipment does cause harmful interference to radio or television reception, which can be determined by turning the equipment off and on, the user is encouraged to try to correct the interference by one or more of the following measures:

- Reorient or relocate the receiving antenna.
- Increase the separation between the equipment and receiver.
- Connect the equipment into an outlet on a circuit different from that to which the receiver is connected.
- Consult the dealer or an experienced radio/TV technician for help.

This equipment complies with FCC radiation exposure limits set forth for an uncontrolled environment. This equipment should be installed and operated with minimum distance 20cm between the radiator & your body

IC Warning

This device complies with Industry Canada licence-exempt RSS standard(s). Operation is subject to the following two conditions:

1. This device may not cause interference, and
2. This device must accept any interference, including interference that may cause

undesired operation of the device.

Le présent appareil est conforme aux CNR d'Industrie Canada applicables aux appareils radio exempts de licence. L'exploitation est autorisée aux deux conditions suivantes:

1. l'appareil ne doit pas produire de brouillage, et
2. l'utilisateur de l'appareil doit accepter tout brouillage radioélectrique subi, même si le brouillage est susceptible d'en compromettre le fonctionnement

This equipment complies with IC radiation exposure limits set forth for an uncontrolled environment. This equipment should be installed and operated with minimum distance 20cm between the radiator & your body.

[Azores Networks WAGM51W6 Xgspont Unit](#) [pdf] User Manual
2BCE2-WAGM51W6, 2BCE2WAGM51W6, WAGM51W6 Xgspont Unit, Xgspont Unit, Ont Unit

- User Manual