



AXXESS XSUI-6524-BT Jeep/Ram Select Models Data Interface Instruction Manual

[Home](#) » [AXXESS](#) » AXXESS XSUI-6524-BT Jeep/Ram Select Models Data Interface Instruction Manual 

Contents

- [1 AXXESS XSUI-6524-BT Jeep/Ram Select Models Data Interface](#)
- [1.1 INTERFACE COMPONENTS](#)
- [2 INTERFACE FEATURES](#)
- [3 CONNECTIONS](#)
- [4 INSTALLATION](#)
- [5 PROGRAMMING](#)
- [6 APP INSTRUCTIONS](#)
- [7 Documents / Resources](#)
- [8 Related Posts](#)



AXXESS XSUI-6524-BT Jeep/Ram Select Models Data Interface



INTERFACE COMPONENTS

- XSVI-6524-BT interface
- XSVI-6524-BT harness
- 2-pin CAN harness

APPLICATIONS

Jeep		Ram	
Renegade 2015-2017		Promaster	
Renegade Sport 2018		(w/ color screen)	2014-Up
Promaster City	2015-Up		

INTERFACE FEATURES

- Provides accessory power (12-volt 10-amp)
- Retains R.A.P. (retained accessory power)
- Provides NAV outputs (parking brake, reverse, speed sense)
- Pre-wired ASWC-1 harness (ASWC-1 sold separately)
- Retains the factory backup camera
- Designed for non-amplified models
- Retains balance and fade
- Retains the factory AUX-IN jack
- Allows retention and adjustment of the personalization options
- Adjust personalization options through a Bluetooth application
- Smartphone application offering full control from either Android or Apple mobile devices
- Micro-B USB updatable

OPTIONAL ACCESSORIES (sold separately)

Steering wheel control interface: ASWC-1 OBD T-harness: AX-IL-OB2

TOOLS REQUIRED

- Crimping tool and connectors, or solder gun, solder, and heat shrink
- Tape
- Wire cutter
- Zip ties

CONNECTIONS

From the XSVI-6524-BT harness to the aftermarket radio

- Connect the Black wire to the ground wire.
- Connect the Yellow wire to the battery wire.
- Connect the (3) Red wires to the accessory wire.

Note: If installing an ASWC-1 (sold separately), there will be an accessory wire there to connect as well.

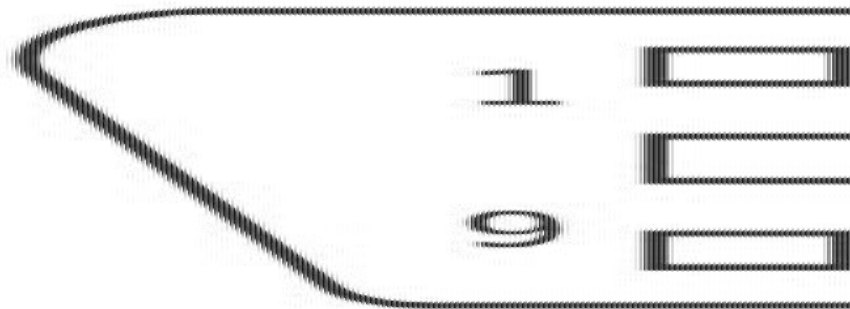
- If the vehicle is equipped with a factory amplifier, connect the (2) Blue/White wires to the amp turn on wire.
- If the aftermarket radio has an illumination wire, connect the Orange wire to it.
- Connect the Gray wire to the right front positive speaker wire.
- Connect the Gray/Black wire to the right front negative speaker wire.
- Connect the White wire to the left front positive speaker wire.
- Connect the White/Black wire to the left front negative speaker wire.
- Connect the Green wire to the left rear positive speaker wire.
- Connect the Green/Black wire to the left rear negative speaker wire.
- Connect the Purple wire to the right rear positive speaker wire.
- Connect the Purple/Black to the right rear negative speaker wire.

The following (3) wires are only for multimedia/navigation radios that require these wires.

- Connect the Blue/Pink wire to the VSS/speed sense wire.
- Connect the Green/Purple wire to the reverse wire.
- Connect the Light Green wire to the parking brake wire.
- Tape off and disregard the following (2) wires, they will not be used in this application: Blue/White (qty. 2)
- If retaining the factory backup camera, connect the Yellow RCA jack to the backup camera input.
- If retaining the factory AUX-IN jack, connect the Red & White RCA jacks to the AUX input.

CAN connections to the vehicle

- Disconnect the 2-pin connector from the XSVI-6524-BT harness.
- Connect the 2-pin CAN harness to the XSVI-6524-BT harness.
- Route the harness to the vehicles OBD port located under the driver's side dash. Option 1
- Connect the White/Red (pin 6) wire to the CAN-HI wire. (Figure A)
- Connect the White/Green (pin 14) wire to the CAN-LO wire. (Figure A)



(Figure A)

Option 2

- Use part number AX-IL-OBD2 to “T” into the OBD port.

12-pin pre-wired ASWC-1 harness

This harness is to be used along with the ASWC-1 (sold separately) to retain steering wheel audio controls. If the ASWC-1 is not being used, disregard this harness. If it is to be used, please refer to the ASWC-1 instructions for radio connections and programming. Disregard the harness that comes with the ASWC-1.

INSTALLATION

With the key in the off position

1. Connect the XSVI-6524-BT harness to the XSVI-6524-BT interface, and then to the wiring harness in the vehicle.
2. If an ASWC-1 (sold separately) will be used, do not connect it until the XSVI-6524-BT is programmed and fully functional.

PROGRAMMING

Attention! If the interface ever loses power, the following steps will need to be performed again. Please ensure that the owner of the vehicle knows this.

1. Turn the key (or push-to-start button) to the ignition position and wait until the radio comes on.
Note: If the radio doesn't come on within 60 seconds, turn the key to the off position, disconnect the interface, check all connections, reconnect the interface, and then try again.
2. Turn the key (or push-to-start button) to the off position, then open and close the driver's door.
3. Wait 5 minutes for the vehicle to fully go to sleep.
4. Start the vehicle, then test all functions of the installation for proper operation.

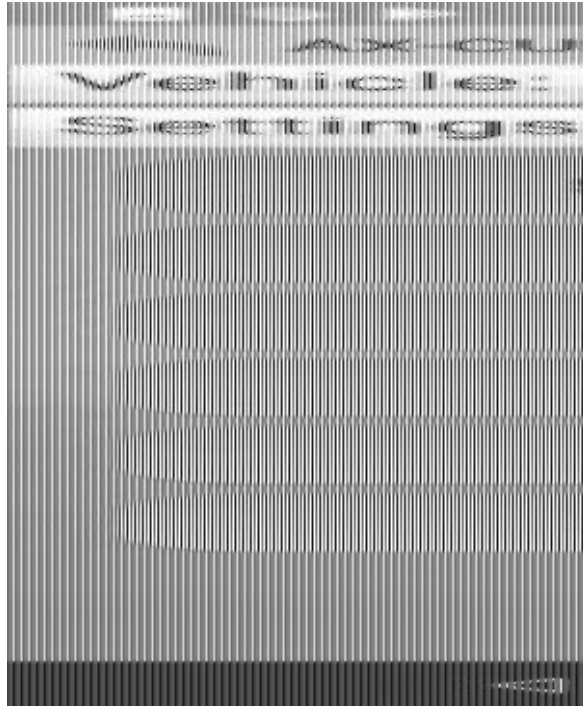
APP INSTRUCTIONS

1. Download and install the AX-CUSTOM-BT app from the Android/Apple mobile devices app store.
2. Start the vehicle.

3. Open the app and wait for the Customization Settings menu to appear. If Not Connected appears instead, first press the right button in the top right corner of the screen, then press the left button. This will take you back to Customization Settings. The pairing process will begin at this point.
4. Once paired, Settings will be displayed in the screen. From this point on you can make changes to the vehicle as desired, as long as the vehicle is running. (Figure A)

Note: Screenshot shown for illustration only. Actual options available vary per vehicle and per trim.

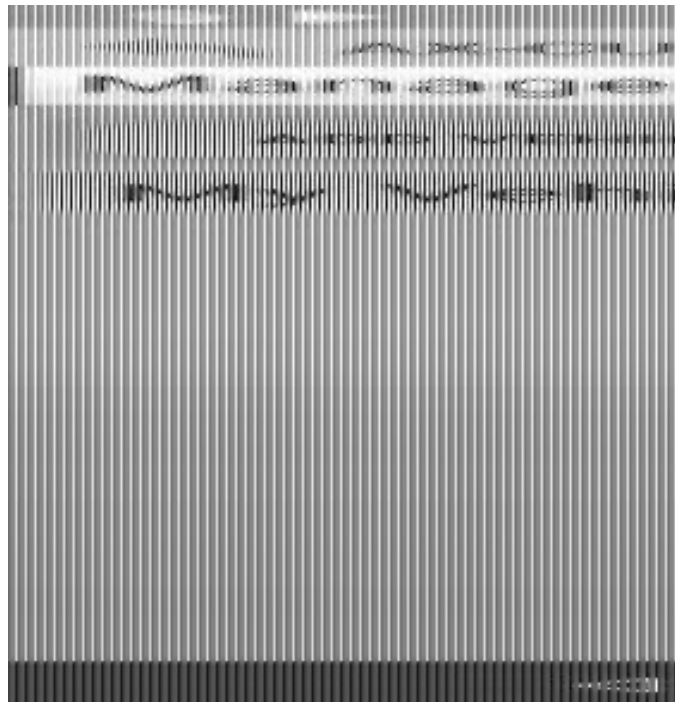
Note: The app must be paired with the interface at least once for the initial setup. Failure to do so will prevent the interface from functioning.



(Figure A)

Other Options

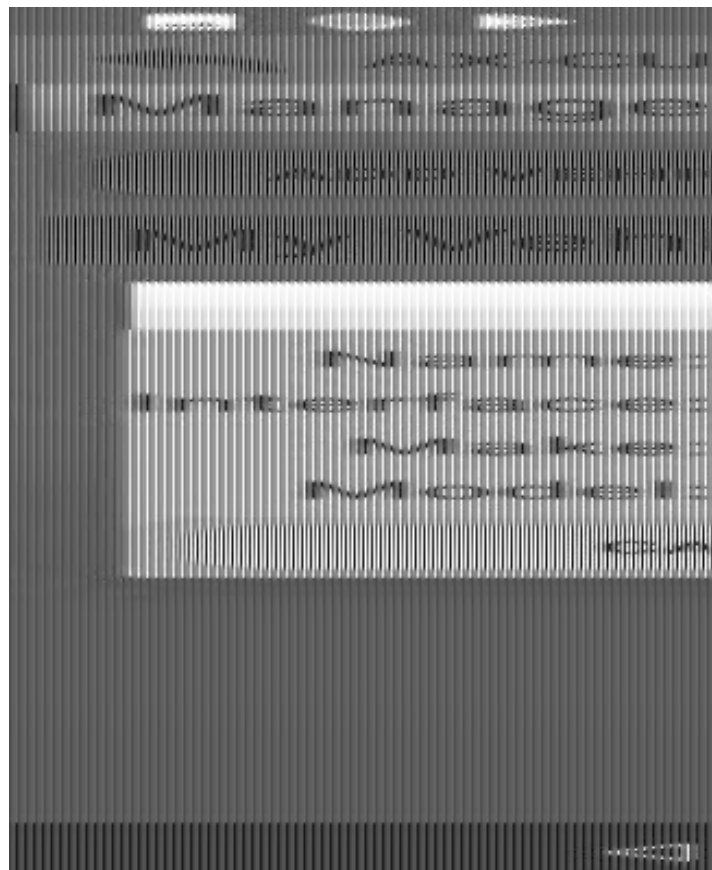
Manage Vehicles (Figure B)



(Figure B)

- Select Manage Vehicles by pressing the button in the top right of the screen.
- Pressing either the Add Vehicle or Edit (pencil icon) button will open the Configure Vehicle menu.

Configure Vehicle (Figure C)



(Figure C)

- The name of the vehicle can be changed by pressing the text field.
- The app can automatically detect the interface in the vehicle by pressing the Search button (magnifying glass).
- The Make and Model fields will open a drop down list for the user to select the make and model of the vehicle that the interface is installed in.
- Press the Save button to store the changes.

Having difficulties? We're here to help.

Contact our Tech Support line at:

1-800-253-TECH

Or via email at:

techsupport@metra-autosound.com

Tech Support Hours (Eastern Standard Time)

Monday – Friday: 9:00 AM – 7:00 PM

Saturday: 10:00 AM – 7:00 PM

Sunday: 10:00 AM – 4:00 PM

KNOWLEDGE IS POWER

Enhance your installation and fabrication skills by enrolling in the most recognized and respected mobile electronics school in our industry.

Log onto www.installerinstitute.com or call

800-354-6782 for more information and take steps toward a better tomorrow.

Metra recommends MECP certified technicians

© COPYRIGHT 2020 METRA ELECTRONICS CORPORATION

AxxessInterfaces.com

REV. 11/10/20 INSTXSVI-6524-BT

Documents / Resources



[AXXESS XSVI-6524-BT Jeep/Ram Select Models Data Interface](#) [pdf] Instruction Manual
XSVI-6524-BT, Jeep Select Models Data Interface, Ram Select Models Data Interface