



AXIS P1455-LE Network Camera Instruction Manual

[Home](#) » [AXIS](#) » **AXIS P1455-LE Network Camera Instruction Manual** 

AXIS P1455-LE Network Camera Instruction Manual



Contents

- [1 Preparations](#)
- [2 Pretreatment of parts](#)
- [3 Disassembly](#)
- [4 Masking](#)
- [5 Repainting](#)
- [6 Reassembly](#)
- [7 Documents / Resources](#)
 - [7.1 References](#)
- [8 Related Posts](#)

Preparations

- If applicable, disassemble the device according to the instructions in this document.
- Clean all parts that will be repainted thoroughly to remove grease, dust, or oil.
- To ensure reassembly and functionality of the product, mask any openings (for example for screws, LED indicators, or microphones) before you paint.
- To avoid unwanted reflections, mask the inside of the weathershield before you paint.

Pretreatment of parts

Depending on the part material and type of paint applied at factory, different pretreatment should be done for the new paint to adhere as well as possible. Clean the parts properly to remove oil, grease and dust.

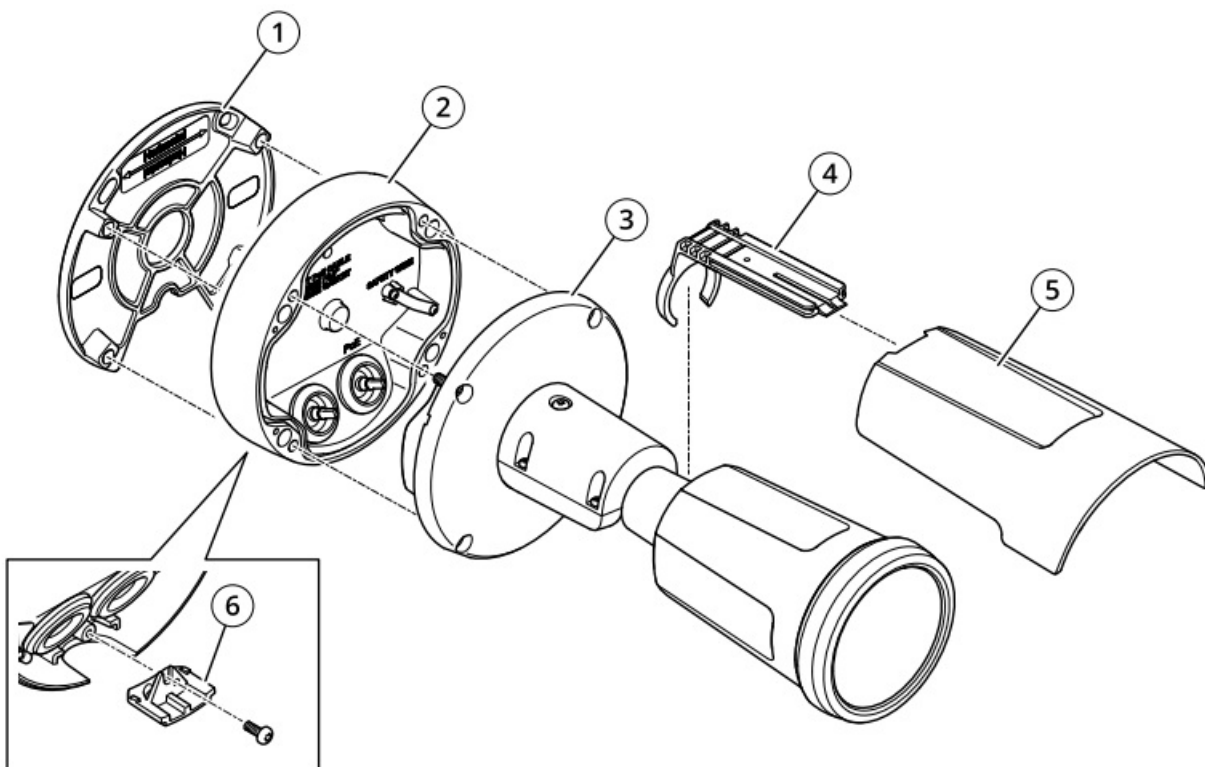
Powder coated parts – Use a primer. Alternatively, remove the original powder coating down to the base material, using fine sandpaper, and clean the parts before painting.

Anodised and chromated parts – Use a primer.

Uncoated stainless steel – No special pretreatment is needed, but make sure that the surface is clean before painting.

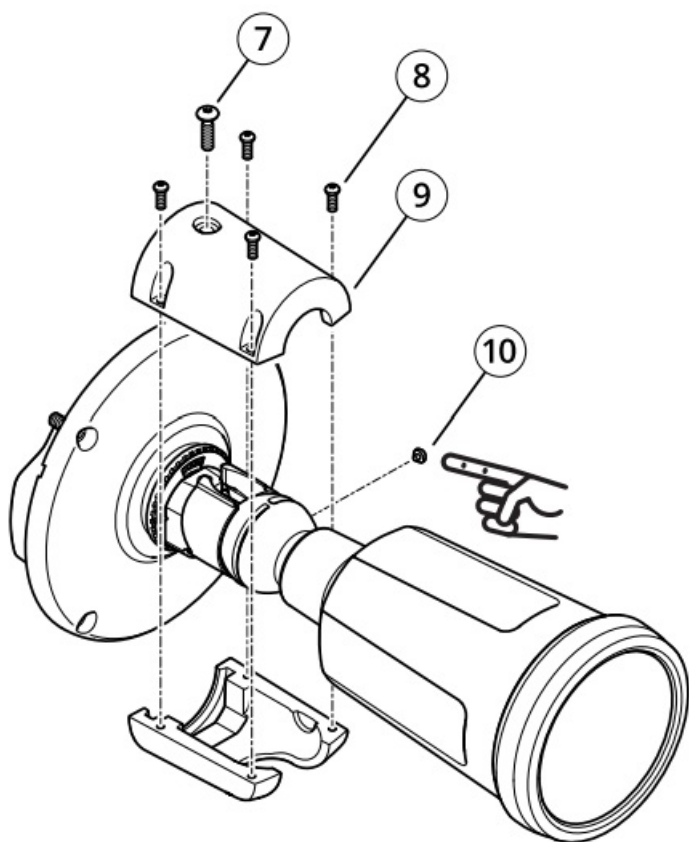
Plastic – Use a primer.

Disassembly



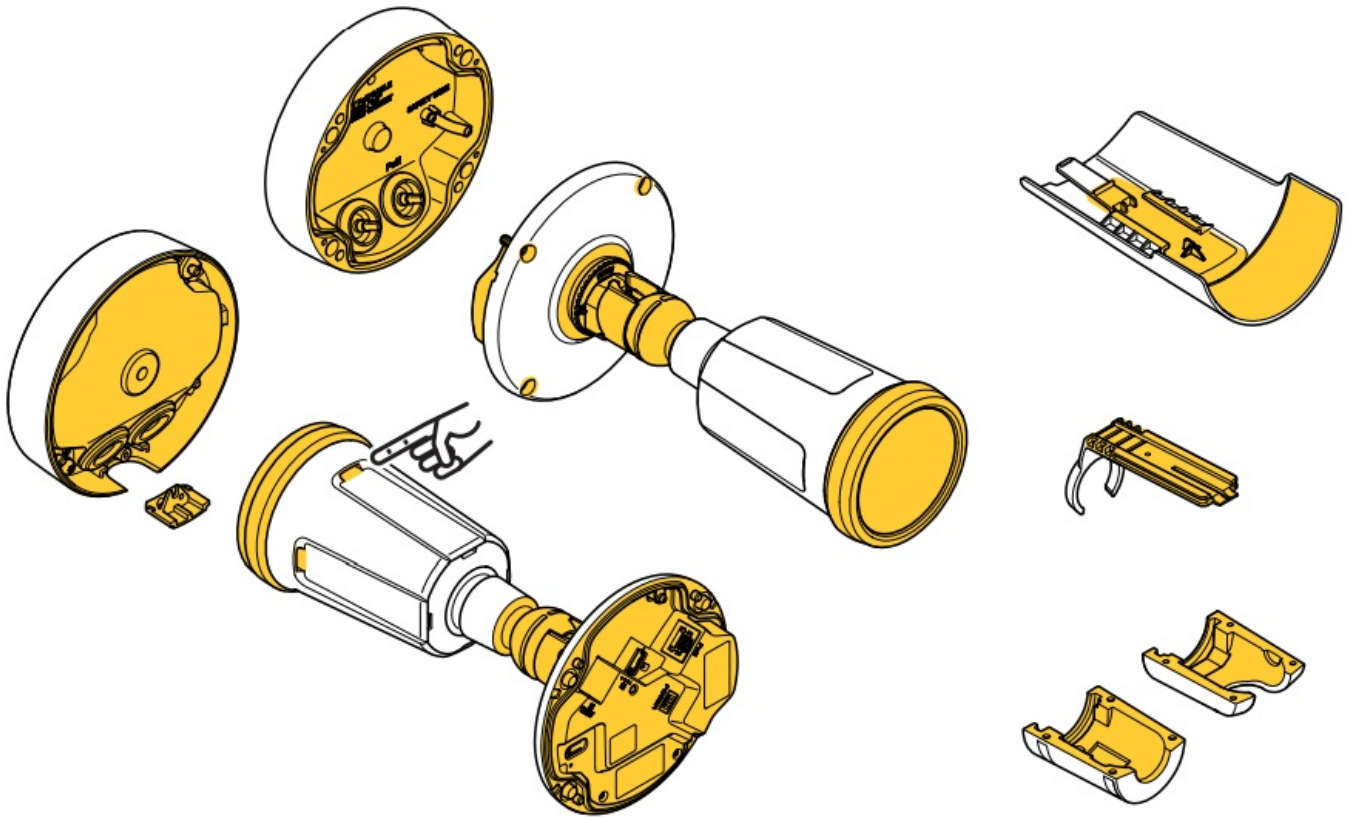
1. Back plate
2. Bottom base cover
3. Camera unit
4. Holder
5. Weathershield

- 6. Lid
- 7. Lock screw
- 8. Screw
- 9. Arm cover
- 10. Pin



- 1. Remove the bottom base cover.
- 2. Remove the lid from the bottom base cover.
- 3. Remove the weathershield.
- 4. Remove the holder from the weathershield.
- 5. Remove the lock screw, the screws and the arm cover.
- 6. Remove the pin

Masking



1. Make sure all necessary preparations of the camera unit has been made. See Preparations on page 3 .
2. Mask all screw and screwholes.
3. Mask the entire top surface of the bottom base cover.
4. Mask the entire bottom surface of the bottom base cover.
5. Mask the back of the lid.
6. Mask the underside of the weathershield.
7. Mask the holder.
8. Mask the inside of the arm cover.
9. Mask everything between the foot and the ball joint.
10. Mask the slots for the weathershield.
11. Mask the front of the camera.

Repainting

1. Apply a thin and even layer of spray paint according to the instructions of the paint manufacturer.
2. Let the paint dry.
3. To get a better coverage and clearer color, apply a second layer of spray paint.
4. When the paint is dry, remove the masking.



Reassembly

1. Place the pin in the recess in the arm.
2. Attach the arm cover, the four screws and the lock screw. Do not tighten the lock screw. Tighten the four screws with 1 N m (0.7 lb ft) tightening torque.
3. Attach the weathershield.



4. Reassemble the camera. Tighten the screws with 1.2 N m (0.9 lb ft) tightening torque.

Repainting Instructions Ver. M3.2
AXIS P14 and AXIS Q19 Camera Series Date: July 2022
© Axis Communications AB, 2021 – 2022 Part No. T10168119

Documents / Resources

 <small>AXIS P14 and AXIS Q19 Camera Series AXIS P1455-L2 Network Camera AXIS P1455-L2 2K var. Network Camera AXIS P1455-L2 Audio Camera AXIS P1455-L2 Audio Camera AXIS P1455-L2 Thermal Camera</small> <small>Repainting Instructions</small>	AXIS P1455-LE Network Camera [pdf] Instruction Manual P1455-LE Network Camera, P1455-LE, Network Camera
 <small>AXIS P14 Camera Series AXIS P1455-L2 Network Camera AXIS P1455-L2 2K var. Network Camera</small> <small>Repainting Instructions</small>	AXIS P1455-LE Network Camera [pdf] User Manual P1455-LE Network Camera, P1455-LE, Network Camera, Camera

References

-  [Axis Communications - Leader in network cameras and other IP networking solutions | Axis Communications](#)
-  [Warranty implication when repainting | Axis Communications](#)