



AXIS P14 and Q19 Camera Series Instruction Manual

[Home](#) » [AXIS](#) » [AXIS P14 and Q19 Camera Series Instruction Manual](#) 



AXIS P14 and AXIS Q19 Camera Series
AXIS P1455-LE Network Camera
AXIS P1455-LE 29 mm Network Camera
AXIS Q1951-E Thermal Camera
AXIS Q1952-E Thermal Camera
Repainting Instructions

Contents

- [1 Impact on warranty](#)
- [2 Repaint the product](#)
- [3 Documents / Resources](#)
 - [3.1 References](#)
- [4 Related Posts](#)

Impact on warranty

This product is approved for a repaint by Axis, provided that you follow the instructions in this document and at axis.com/warranty-implication-when-repainting.

Risks with repainting

There are several risks when disassembling or assembling an Axis product. There is always a certain yield loss during assembly. Training of operators and the use of correct tools mediate some of the problems but they can never be fully avoided. Some of the risks include:

ESD Damage – Always handle the product in an ESD-safe environment. Even if precautions are taken there is always a risk of ESD damage. The damage can remain undetected and cause problems during the lifetime of the equipment.

Dust contamination – Opening a camera may expose the lens and sensor to dust or paint. Dust will affect the optical performance. Lenses need to be disassembled in a dust-free environment, preferably a clean room.

Paint overspray – Masking the different components of the equipment is critical. Failure to mask sensitive areas can cause problems with assembling the equipment. Any areas that are not painted at the factory or have a different surface treatment than the rest of the parts (threads, ground, and electrical contact surfaces) must also be masked to ensure function.

Repaint the product

Preparations

- If applicable, disassemble the device according to the instructions in this document.
- Clean all parts to be repainted thoroughly to remove grease, dust, or oil.
- To ensure reassembly and functionality of the product, mask any openings (for example screws, LED indicators, or microphones) before you paint.

Pretreatment of parts

Depending on the part material and type of paint applied at the factory, different pretreatment should be done for the new paint to adhere as well as possible. Clean the parts properly to remove oil, grease, and dust.

For more information on the materials used in the product, see its datasheet at axis.com.

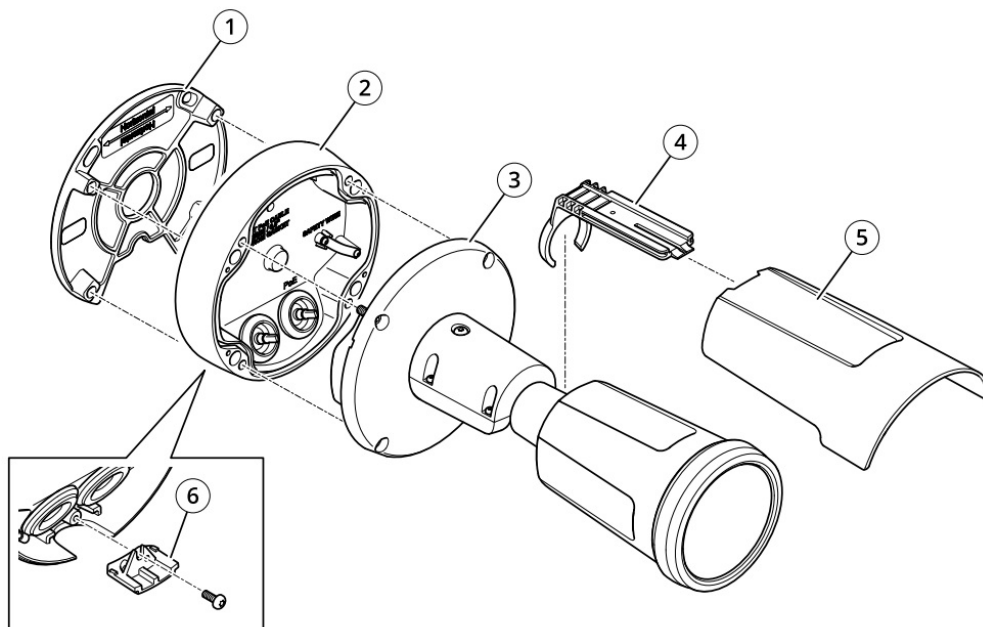
Powder-coated parts – Use a primer. Alternatively, remove the original powder coating down to the base material, using fine sandpaper, and clean the parts before painting.

Anodised and chromated parts – Use a primer.

Uncoated stainless steel – No special pretreatment is needed, but make sure that the surface is clean before painting.

Plastic – Use a primer.

Disassembly

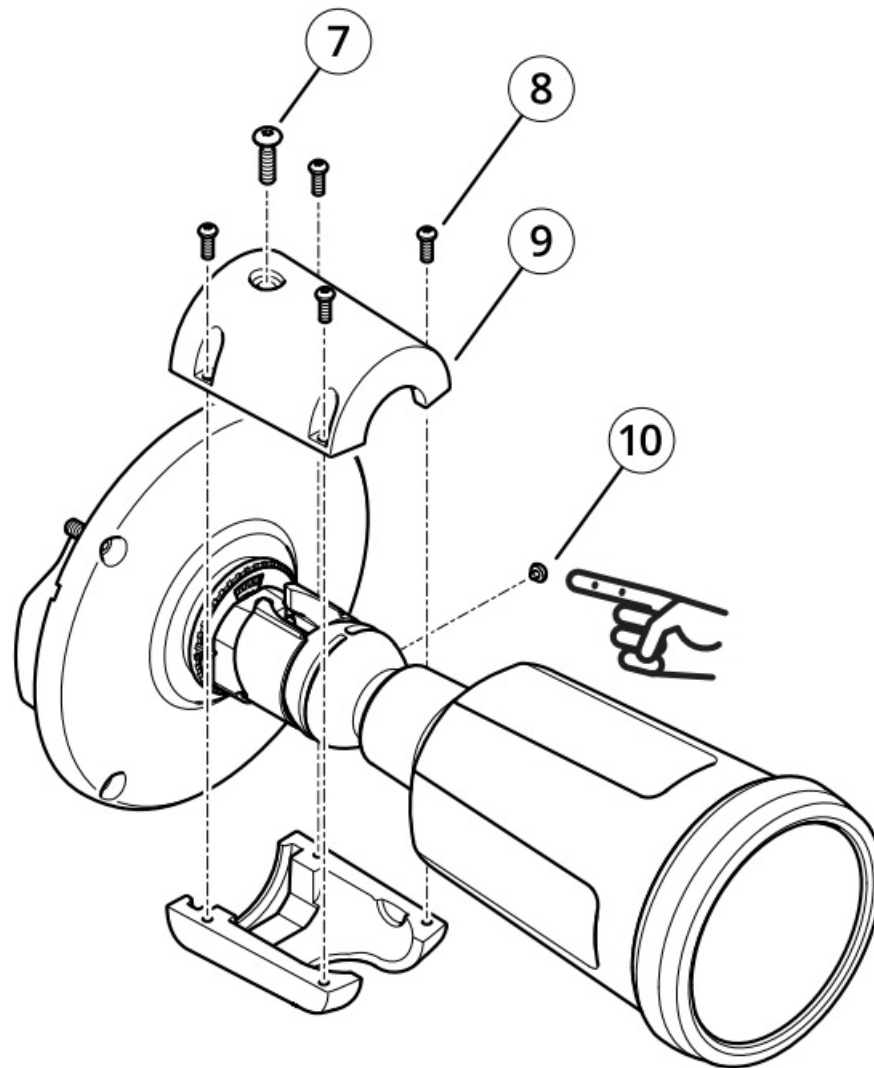


1. Backplate
2. Bottom base cover
3. Camera unit
4. Holder
5. Weathershield

6. Lid

Repaint the product

1. Remove the bottom base cover.
2. Remove the lid from the bottom base cover.
3. Remove the weather shield.
4. Remove the holder from the weather shield.



7 Lock screw

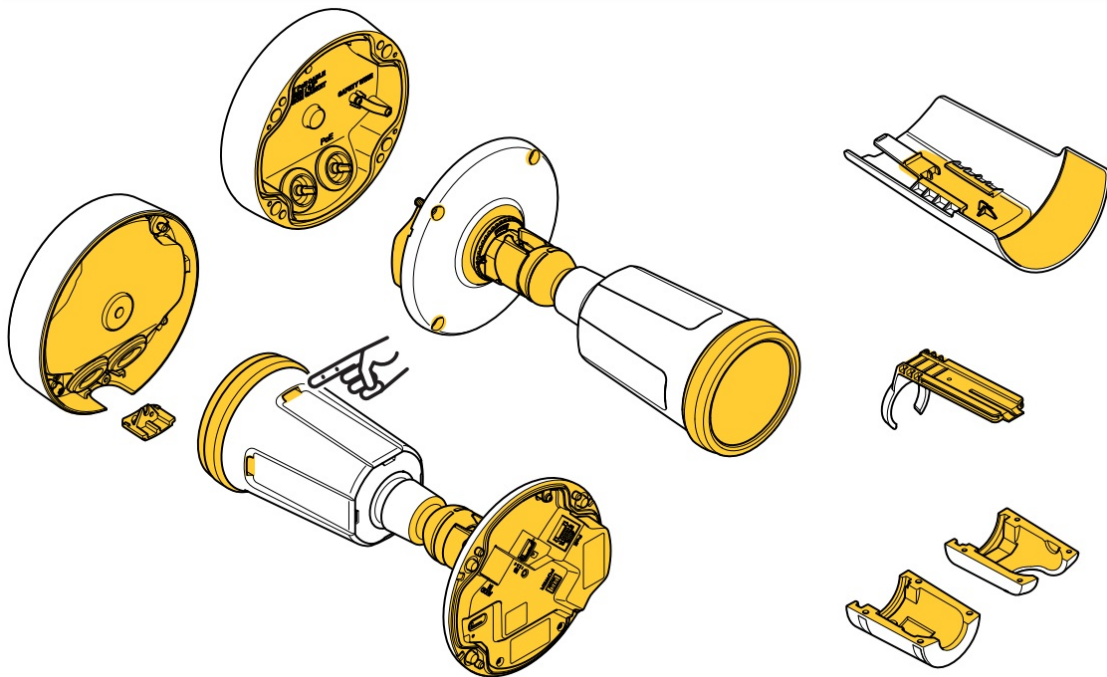
8 Screw

9 Arm cover

10 Pin

5. Remove the lock screw, the screws, and the arm cover.
6. Remove the pin.

Masking



1. Make sure all necessary preparations of the camera unit have been made. See Preparations on page 3.
2. Mask all screws and screwholes.
3. Mask the entire top surface of the bottom base cover.
4. Mask the entire bottom surface of the bottom base cover.
5. Mask the back of the lid.
6. Mask the underside of the weather shield.
7. Mask the holder.
8. Mask the inside of the arm cover.
9. Mask everything between the foot and the ball joint.
10. Mask the slots for the weather shield.
11. Mask the front of the camera.

Repainting


1. Apply a thin and even layer of spray paint according to the instructions of the paint manufacturer.
2. Let the paint dry.
3. To get better coverage and clearer color, apply a second layer of spray paint.
4. When the paint is dry, remove the masking.

Reassembly

1. Place the pin in the recess in the arm.
2. Attach the arm cover, the four screws, and the lock screw. Do not tighten the lock screw. Tighten the four screws with 1 N m (0.7 lb-ft) tightening torque.
3. Attach the weather shield.
4. Reassemble the camera. Tighten the screws with 1.2 N m (0.9 lb-ft) tightening torque.

Repainting Instructions

Documents / Resources

 <small>AXIS P14 and AXIS Q19 Camera Series AXIS P14-40G-10 Network Camera AXIS P14-40G-10-20 Network Camera AXIS Q19-40G-10 Network Camera AXIS Q19-40G-10-20 Network Camera AXIS Q19-40G-10 Thermal Camera</small> <small>Reporting Instructions</small>	AXIS P14 and Q19 Camera Series [pdf] Instruction Manual P14 and Q19 Camera Series, P14 Camera Series, Q19 Camera Series, Camera
-------------------------------------------------------------------------------------------------------------------------------------------------------------------------------------------------------------------------------------------------------------------------------------------------------------------------------------------------------------------------------	----------------------------------------------------------------------------------------------------------------------------------------------------

References

- [Axis Communications - Leader in network cameras and other IP networking solutions | Axis Communications](#)
- [Warranty implication when repainting | Axis Communications](#)