



AXIA Fusion AoIP Console User Guide

[Home](#) » [AXIA](#) » AXIA Fusion AoIP Console User Guide 

Contents

- 1 AXIA Fusion AoIP Console
- 2 INSTALLATION WITH AXIA STUDIOENGINE
 - 2.1 PHYSICAL CONNECTIONS WITH AXIA STUDIOENGINE
 - 2.2 PHYSICAL CONNECTIONS WITH AXIA POWERSTATION
- 3 SYSTEM CONFIGURATION
- 4 SOURCE CONFIGURATION
- 5 Documents / Resources
- 6 Related Posts



AXIA Fusion AoIP Console



THANK YOU FOR PURCHASING THE AXIA FUSION CONSOLE.

We have made Fusion the easiest Axia console, ever, to set up. This quick start guide will take you through the basic steps to configure your new Fusion and have you up and running in no time. Before we get started, let's check your installation type and make sure you have what you need.

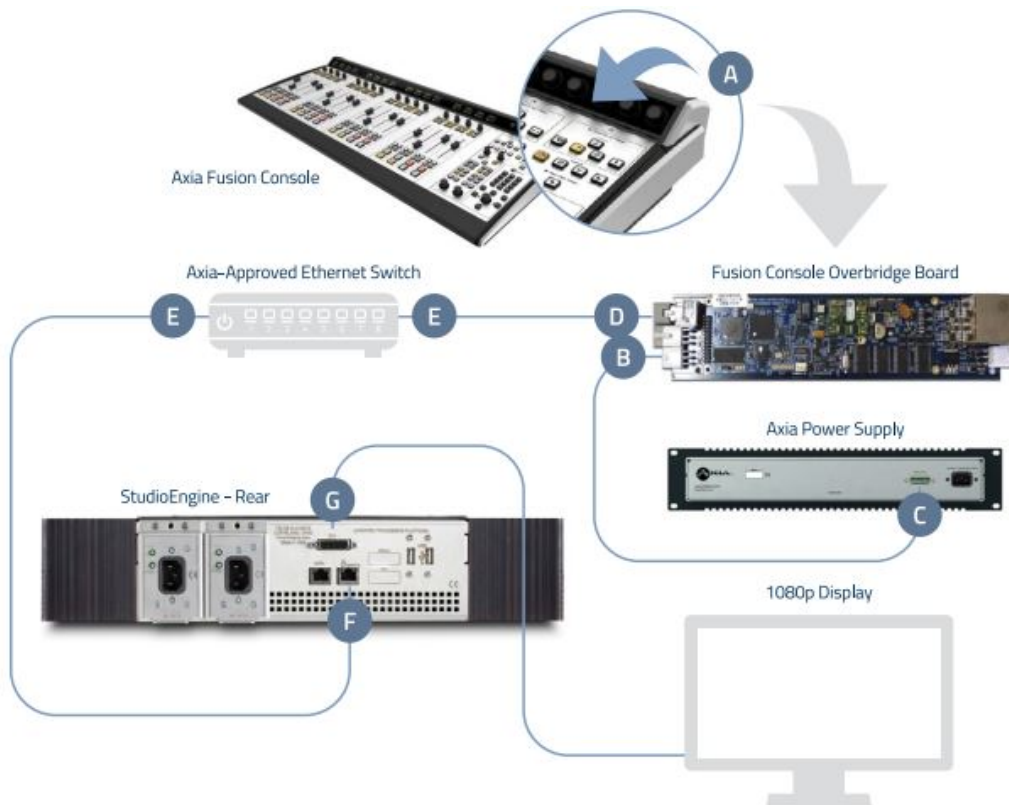
Installation type: You've got your choice of two mixing engines to pair with the Fusion, the StudioEngine or the

PowerStation. We are providing instructions for both setups, so make sure you follow the instructions for your engine type.

THE FOLLOWING ITEMS ARE REQUIRED FOR INSTALLATION:

- Fusion Console
- Fusion Power Cable
- CAT5 Ethernet Cable
- Either a StudioEngine mixing engine and separate Axia Power Supply, or PowerStation mixing engine (with their appropriate power supply cables)
- 1080p Monitor with DVI Connector
- USB Keyboard (for PowerStation setup only)
- PC with network access
- Configured Network Switch

INSTALLATION WITH AXIA STUDIOENGINE



PHYSICAL CONNECTIONS WITH AXIA STUDIOENGINE

1. **Tilt** the overbridge panel of the Fusion Console (A) forward (toward faders) to gain access to the Fusion Console overbridge board.
2. Connect one end of the supplied Fusion power cable to the power port on the Fusion Console overbridge board (B). Connect the other end to the 48DVC Output port (C) on the rear of the Axia Power Supply. Connect the Axia Power Supply to AC Mains using the Axia Power Supply power cable provided.
3. Connect Ethernet cable to the network connection port on the Fusion Console overbridge board (D), connect other end to a configured Ethernet switch (E).
4. Connect Ethernet cable to the Livewire port (F) on the StudioEngine, connect other end to a configured

Ethernet switch (E).

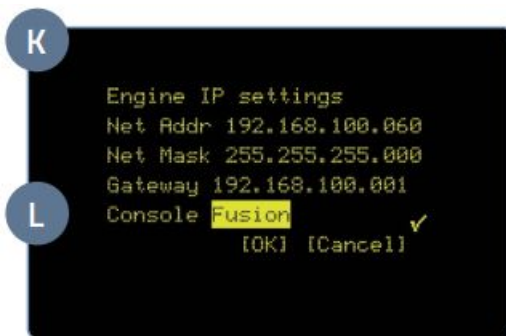
5. Connect a 1080p monitor to the DVI-D video port (G) on the StudioEngine.
6. Close the Fusion Console overbridge panel (A).
7. Continue to Network Configuration with Axia StudioEngine.

NETWORK CONFIGURATION WITH AXIA STUDIOENGINE

1. Apply Power to the StudioEngine. The front display should indicate an error due to sync issue-this is normal. An IP address is needed.
2. Tap the rotary encoder knob (I) on the front panel for a menu view, rotate knob until “Engine IP settings” (J) is highlighted, tap knob to select.



3. Rotate knob (I) to select “Net Address” and tap knob to select.
4. Once on the Engine IP settings screen (K), rotate knob (I) to move the cursor, tap knob to edit cursor position, rotate to increment value, tap knob to accept change. Repeat for all IP address values. Make a note of this IP address for further configuration in later steps.



5. Select check mark to right of address and tap knob (I) to accept.
6. Repeat for Netmask and Gateway as needed.
7. Select Console (L) and change the option to Fusion.
8. Select OK and tap knob to respond affirmative in order to reboot engine with new settings.

CONTINUE TO THE SYSTEM CONFIGURATION

The Console is now recognized by the network and is ready to be linked to the StudioEngine and configured to load sources. Continue to the “System Configuration” instructions.



2. Tap the up arrow key on the attached keyboard until the “Config IP addr” value is in yellow text.
3. Clear the current value with the Backspace key on the attached keyboard and use number keys to enter a new value. Make a note of this IP address for further configuration in later steps.
4. Tap the arrow keys on the attached keyboard to navigate to “Config NetMask” and “Config Gateway”, enter the needed values.
5. Tap the down arrow key on the attached keyboard to navigate to “Save & Reboot”. Tap the Enter key on the attached keyboard to reboot system.
6. Disconnect USB keyboard from PowerStation.

CONTINUE TO THE SYSTEM CONFIGURATION

The Console is now recognized by the network and is ready to be linked to the PowerStation then configured to load sources. Continue to the “System Configuration” instructions.

INSTALLATION HELP

If you have more questions, you can access the full manual online at <http://www.telosalliance.com/Axia/Fusion> or call the Telos Alliance 24/7 Support Team at +1 (216) 622-0247, we’d be happy to help you out.

SYSTEM CONFIGURATION

1. Using a PC connected to your studio network, launch a web browser and enter the assigned IP address into the browser’s address bar. When prompted for authentication enter user name “user”, password is left blank.
2. The Fusion control center will launch (A). In the left column, under “Mix Engine”, select the “Network” link (B), click the “Install” button at the bottom of the new page.

Attached Consoles

Console count:

PS CONSOLE: 1

Current MAC:

Console boards found: 1

	MAC	current IP	hostname
Select:	58:50:AB:40:03:53	192.168.2.27	ETH4CAN
	(none)		
	58:50:AB:40:03:53	192.168.2.27	ETH4CAN

3. Enter the value “1” into the “Console Count” field (C) and click “Apply Console Count” (D).
4. In the “PS CONSOLE: 1” (E) section, select the discovered console from the drop down menu (F). Click “Apply IP” (G) to set the IP address and link it to StudioEngine or PowerStation.
5. Your Console is now connected and will display “Inactive” on each channel. On the Monitor Module keypad (H) Press and hold the “*” key and “2” key until “Capture” is displayed.



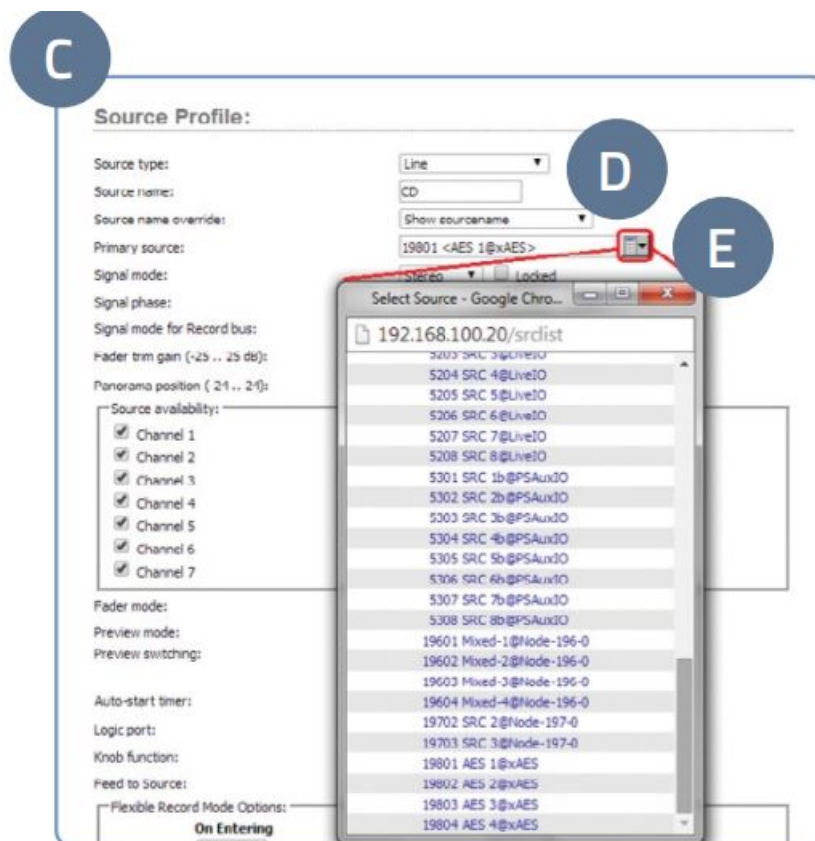
6. Release the keys. For the full-sized Fusion Monitor/Navigation Module, press the “Enter” key, for a Fusion Monitor + 2-Fader Module, press the “#” key.
7. Remain logged in to the Fusion Control Center and continue to Source Configuration.

SOURCE CONFIGURATION

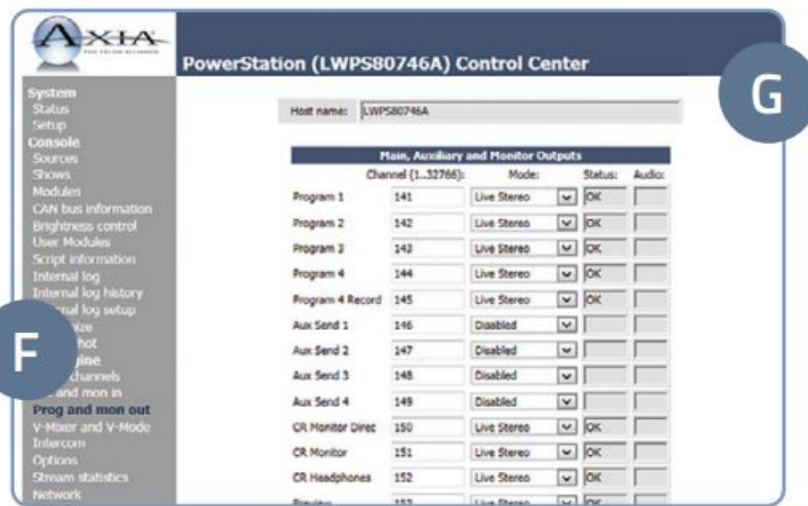
1. In the Fusion Control Center, in the left column under “Console”, select “Sources” (A).



2. Click the “Create New Source Profile” button (B).
3. On the Source Profile screen, select “Source Type” from the drop down list (C).



4. Enter the name of the source in the “Source name” field (D).
5. Click the browse button to the right of the “Primary source” field (E) and select the desired source from the list.
6. Click “Apply”.
7. In the left column under “Mix Engine”, select “Prog and mon out” (F).

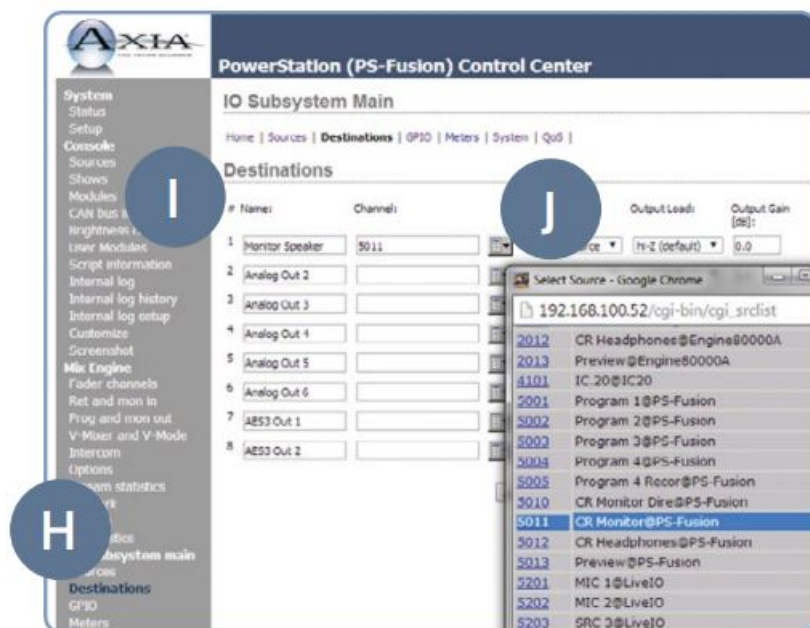


8. Enter (G) the planned channel numbers for either the StudioEngine (Livewire Sources) or PowerStation (Livewire Sources from DSP) outputs.
9. Click the “Apply” button.
10. StudioEngine users-skip Step 11 and proceed to Step 12.
11. PowerStation users continue to the next step below, “For PowerStation users ONLY”.

FOR POWERSTATION USERS ONLY

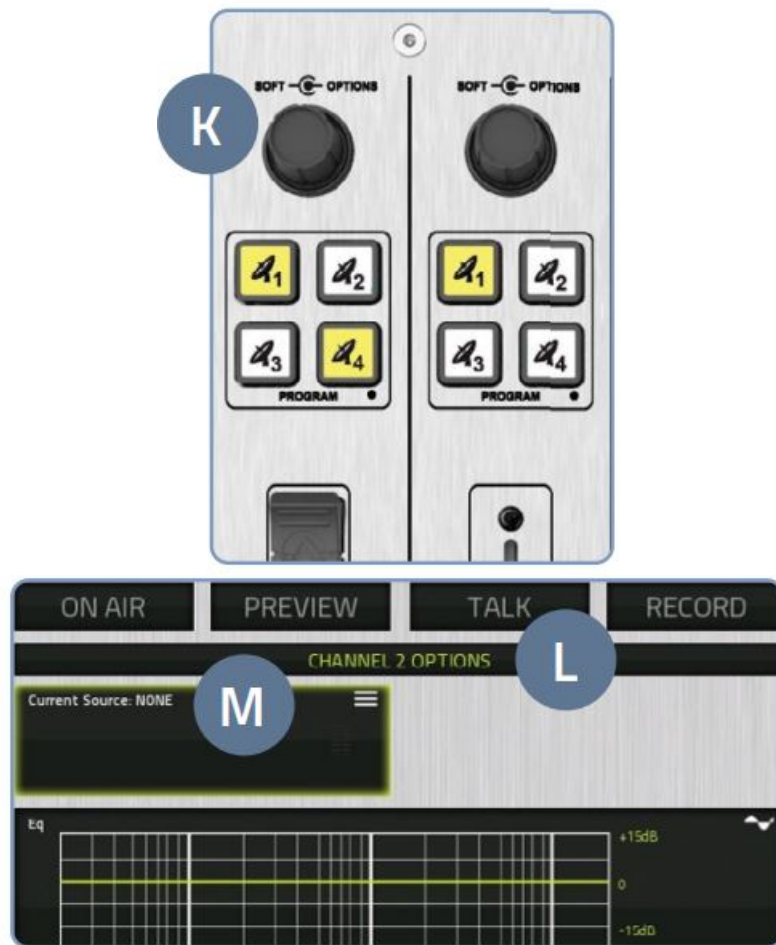
This step configures the designated output on the back of the PowerStation which provides audio to the monitor speaker amplifier for the CR Monitor DSP source.

1. In the left column under “I/O subsystem main”, select “Destinations” (H).

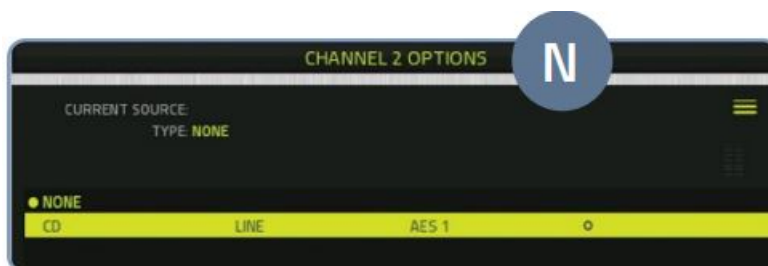


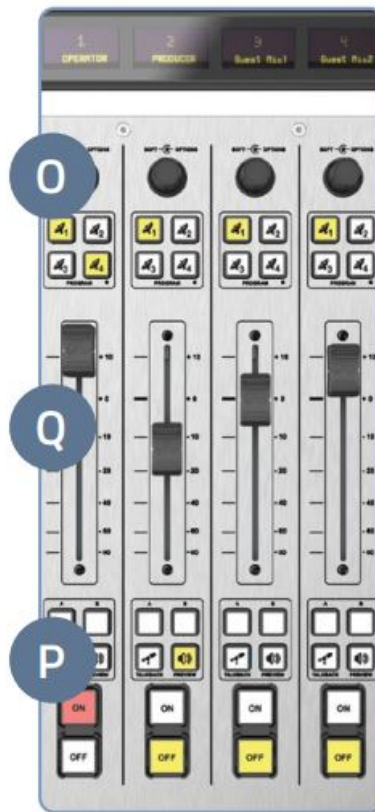
2. When prompted for authentication enter user name “user”, password is left blank.
3. Enter useful labeling in the “Name” field (I).
4. Click the browse button (J) to the right of the “Channel” field and select the CR Monitor source from the PowerStation.
5. Click the “Apply” button.
6. Continue to Step 12.
7. On the Fusion Console Surface, press the channel encoder knob (K) found at the top of the fader strip for Channel Options.

8. The connected video monitor will display the Channel Options (L). Rotate the encoder knob (K) one step to select the source window. (Selected options will be outlined in yellow.) Once the desired option is selected, press the encoder knob (K) to enter the selection.



9. Select the “Current Source” option (M). The next view will show configured source profiles (N).
10. Rotate the encoder knob (K) to highlight the source just created.
11. Press the encoder knob (K) to select the highlighted source.
12. Press the Program 1 button on the fader strip (O) so it is illuminated.
13. Press the “On” button (P) on the fader strip.
14. Move the fader (Q) up-you should hear audio. The meters on your video display should be active (R).
15. Note: To hear the audio, make sure Program 1 is selected in the monitor section for CR Monitor and that the volume is at an appropriate level. For StudioEngine users only: make sure the xNode output feeding your speaker has been assigned the CR Monitor source output of the StudioEngine.
16. Repeat “Source Configuration” steps to configure additional sources.





YOUR SETUP IS COMPLETE!

That's it! You are now ready to experience the Axia Fusion, a powerful, flexible and easy to use console, packed with all of the capabilities and features you need. Enjoy!

QUICK LINKS

Subscribe to our Newsletter

Weekly updates on all things broadcast via email

TelosAlliance.com/newsletter

Social Media

Facebook: @TelosAlliance

Twitter: @TelosAlliance

LinkedIn: /TelosAlliance

YouTube: TelosAllianceTV

Product Catalog

TelosAlliance.com/catalog

24/7 Tech Support


Radio: +1 (216) 622-0247

TV: +1 (717) 735-3611

Radio: support@telosalliance.com

TV: support@linearacoustic.com

Documents / Resources



[AXIA Fusion AoIP Console](#) [pdf] User Guide

Fusion AoIP Console