

# AXAGON PCES-SA4M2 PCIe Controller Instruction Manual

[Home](#) » [AXAGON](#) » AXAGON PCES-SA4M2 PCIe Controller Instruction Manual 

# AXAGON

INSTRUCTIONS FOR USE  
(original) revision 1.0  
PCES-SA4M2



**2x INTERNAL SATA 6G PORT & 2x  
SATA M.2 CO\ ECTOR  
PCI-EXPRESS CO \TRCLER  
Instructions for use**


## Contents

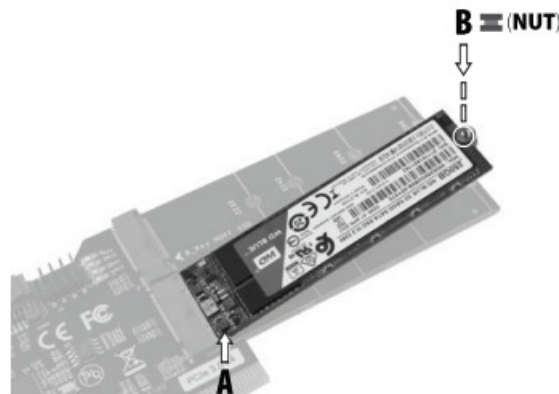
- 1 PCES-SA4M2 PCIe Controller
- 2 Technical specifications
- 3 Documents / Resources
- 4 Related Posts

## PCES-SA4M2 PCIe Controller

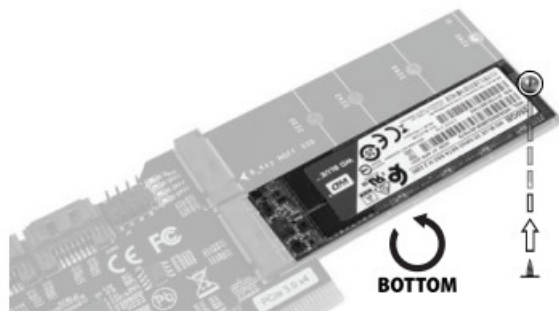
1. Back up the data on the hard disks to be connected to the controller.
2. Mount SSD disks. (see Figures 1- 2 on the next page)
3. Switch off your computer and unplug the power cable.
4. Open the case and insert the controller in a free PCI-Express slot.
5. Connect the hard disk or optical drive to the controller using a SATA cable.
6. Connect power to the hard disk or optical drive.
7. Close the case, connect the power and turn on the computer.
8. The controller is detected and installed automatically. SSD disks are ready. Win7: We recommend installing the ASmedia driver from [www.axagon.eu/en/produkty/pces-sa4m2](http://www.axagon.eu/en/produkty/pces-sa4m2).
9. In the Device manager, please check the successful installation. (Fig. A)
10. In the Disk manager, please initialize the new disc and format it. (Fig. B)

**A** insert **SATA M.2** SSD disks

**B** insert the mounting **NUTS** ⇒ 

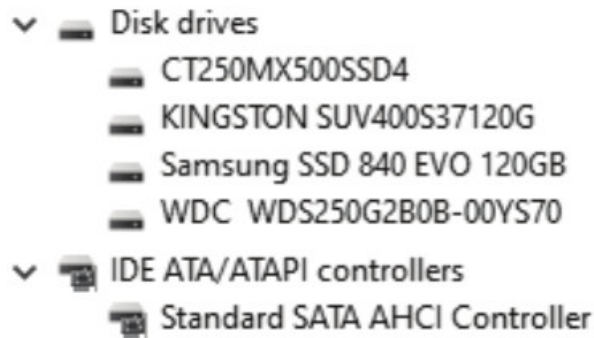


**Fix** the SATA M.2 SSD DISKS with the screws **on the back** of the PCIe controller



**FIGURE A**  
CHECK CORRECT INSTALLATION IN DEVICE MANAGER

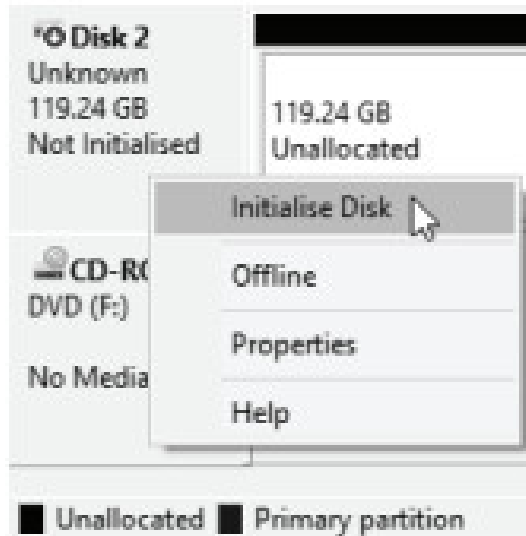
printscreen ENG W11



(only devices which are added to the Device Manager when installing the controller and disks are displayed)  
17.41171

## INITIALIZE NEW DISKS AND FORMAT THEM IN DISK MANAGEMENT

printscreen ENG W10



**TECHNICAL SUPPORT:** More information, FAQs, manuals and drivers can be found on the product page in the PRODUCT SUPPORT tab at [www.axagon.eu](http://www.axagon.eu). Nothing helped? Write to our technical support: [support@axagon.cz](mailto:support@axagon.cz).



At the end of its service life, do not throw the product into household waste; take it to a collection point for electrical equipment recycling. For information about collection and recycling programmes in your country, contact your local authorities or the retailer who sold you the product.



EU declaration of conformity: The device complies with the harmonisation legislation of the European Union 2014/30/EU (EMC) and 2011/65/EU (RoHS). The complete EU declaration of conformity is available from the manufacturer.



Before using the product, the user is obliged to read the user instructions. The manufacturer disclaims any liability for damage that may occur due to improper use of the product or failure to follow the instructions contained herein. Product use other than specified must be consulted with the manufacturer.



Do not use the product in humid or explosive environments and near flammable substances.

## Technical specifications

### INPUT INTERFACE

PCI-Express v3.0 2-Lane (x2)

PCI-Express v2.0 & 1.0 compatible x4, x8, x16 slot compatible 4 GByte/s max. data rate (PCIe 3.0 x2)

### OUTPUT INTERFACE

4x independent Serial ATA channels  
2x SATA female connector  
2x SATA M.2 B-key slot  
SATA (AHCI) M.2 SSD disks (B-key or B+M-key)  
30, 42, 60, 80 mm  
all capacities supported  
SATA 6G compatible  
SATA 3.0 – 6 Gbit/s max. data rate  
SATA 2.0 – 3 Gbit/s max. data rate  
SATA 1.0 – 1.5 Gbit/s max. data rate  
TRIM support  
Hot Plug support Boot support  
NCQ Native Command Queueing  
Port Multiplier Command Based Switching  
4 LEDs flash during data transfer (D4 – D7)  
4 pins for HDD LED (J4)

#### **OS SUPPORTED**

Windows  
7 • 8.1 • 10 • 11 & later  
Server 2008 • 2012 • 2016 • 2019 • 2022 & later  
32 & 64bit versions supported  
Linux 2.6.x & later

#### **PRODUCT SUPPORT LINK**



<http://axagon.eu/produkty/pces-sa4m2#supportLinkGoal>

PCIe controller with two SATA 6G ports and two SATA M.2 connectors

© 2022 AXAGON

Manufacturer: RealQ s.r.o. 619 00 Brno, Czech Republic

All rights reserved. All text and pictorial materials contained in this document are protected by Copyright Act.

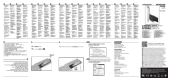
All marks indicated here are the registered trademarks of their appropriate owners.

Specifications are subject to change without prior notice. Made in CHINA for Axagon.



[www.axagon.eu](http://www.axagon.eu)

#### **Documents / Resources**



[AXAGON PCES-SA4M2 PCIe Controller](#) [pdf] Instruction Manual  
PCES-SA4M2 PCIe Controller, PCES-SA4M2, PCIe Controller, Controller

[Manuals+](#).