

AXAGON

AXAGON HMC-8HLSA
Superspeed USB-C Hub



AXAGON HMC-8HLSA Superspeed USB-C Hub Instruction Manual

[Home](#) » [AXAGON](#) » AXAGON HMC-8HLSA Superspeed USB-C Hub Instruction Manual 

Contents

- [1 AXAGON HMC-8HLSA Superspeed USB-C Hub](#)
- [2 TECHNICAL SPECIFICATIONS](#)
- [3 Documents / Resources](#)
 - [3.1 References](#)
- [4 Related Posts](#)

AXAGON

AXAGON HMC-8HLSA Superspeed USB-C Hub



1. Turn on computer.
2. Connect the hub to the PC USB port.
3. An automatic installation will be performed.
No need to install any external drivers.
4. The hub is ready.



PRODUCT SUPPORT LINK

<http://axagon.eu/produkty/hmc-8hlsa#supportlinkGoal>

SuperSpeed USB hub w/ HDMI, GLAN, PD, USB-A ports, memory card reader and audio output

© 2023 AXAGON

Výrobce / Manufacturer: RealQ s.r.o. – Zelezná 5, 619 00 Brno, Czech Republic

All rights reserved. All text and pictorial materials contained in this document are protected by Copyright Act.

All marks indicated here are the registered trademarks of their appropriate owners.

Specifications are subject to change without prior notice.

Made in CHINA for Axagon.

TECHNICAL SPECIFICATIONS

INPUT INTERFACE:

USB-C

- USB 3.2 Gen 1 (USB 3.0) • USB 2.0
- 5000 • 480 • 12 • 1.5 Mbit/s (Super • High • Full • Low Speed)
- USB-C male connector

OUTPUT INTERFACE:

USB-A

- 2x USB 3.2 Gen 1 ports for data with USB-A female connectors
- 1x USB 2.0 port for data with USB-A female connector
- up to 2 external disks can be connected at the same time
- up to 1.5 Amp charging on USB ports

HDMI

- HDMI A female connector

- Max. resolution 4K/30Hz (4096 x 2160 @ 30Hz)
 - HDCP 1.4 a 2.3 (High-bandwidth Digital Content Protection) support
 - TMDS (Transition Minimized Differential Signaling) support
 - 8-CH LPCM audio – compress audio (AC-3, DTS) and HBR audio format support
 - Up to 192kHz / 24bit – depends on source and target device parameters i.e. notebook/phone and TV/monitor/AV receiver
- *Audio + Video function requires DisplayPort Alternate Mode (DP Alt Mode) or Thunderbolt 3 compatible port + OS support

LAN

- RJ-45 connector for UTP or STP cable
- Gigabit 10/100/1000 Mbit/s data rate
- IEEE 802.3 10Base-T
- IEEE 802.3u 100Base-TX
- IEEE 802.3ab 1000Base-T
- Microsoft NDIS6 Checksum Offload (IPv4, IPv6, TCP, UDP) to reduce CPU loading
- Segmentation Task-offload Large Send V1 & Large Send V2
- IEEE 802.1P Layer 2 Priority Encoding
- IEEE 802.1Q VLAN tagging
- Full Duplex with IEEE 802.3x Flow Control
- Wake-on-LAN
- AMD Magic Packet or Microsoft Wakeup Frame
- Energy Efficient Ethernet (EEE)
- Microsoft Always On Always Connected (AOAC)
- Wake Packet Detection (WPD)
- Link Power Management (LPM)
- 'RealWoW!' (Wake-on-WAN) Technology
- Protocol Offload (ARP & NS)

Power Delivery 3.0

- USB-C female connector
 - Notebook/phone charging through the hub
 - Max power through the hub 100W (20V/5A)
- *requires device with PD power support and matching PD charger

OTHER FEATURES:

- Plug and Play & Hot Plug
- APPLE charging supported
- Power Delivery power / USB bus power
 - powered from PD charger or USB-C port

SIZE NET WEIGHT:

- 118 × 46 × 15mm & 78g
- Cable Length 20 cm

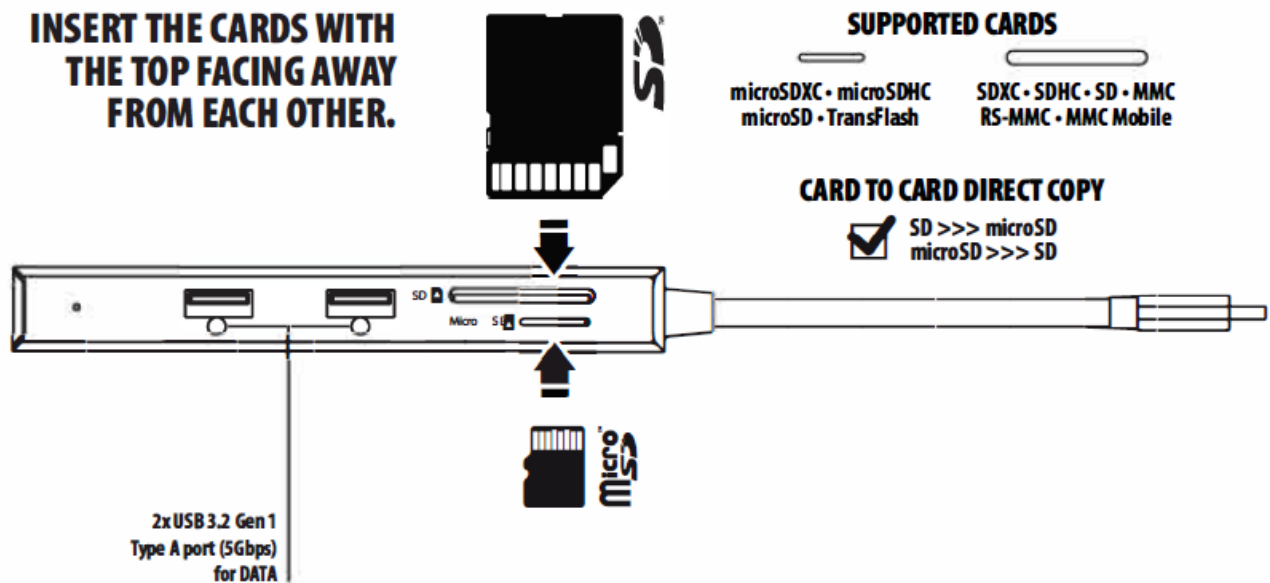
OS SUPPORTED:

- Windows 10 • 11, macOS, Linux, Android, Chrome OS
- Updated OS required. Automatic driver installation – no driver needed.

Correct PD and DP Alt Mode function depends on OS and device manufacturer support.



**INSERT THE CARDS WITH
THE TOP FACING AWAY
FROM EACH OTHER.**



SUPPORTED CARDS

microSDXC • microSDHC
microSD • TransFlash

SDXC • SDHC • SD • MMC
RS-MMC • MMC Mobile

CARD TO CARD DIRECT COPY

✓ SD >>> microSD
microSD >>> SD



Graphic tablet



Game handle



USB fans



Flash Disk



Keyboard



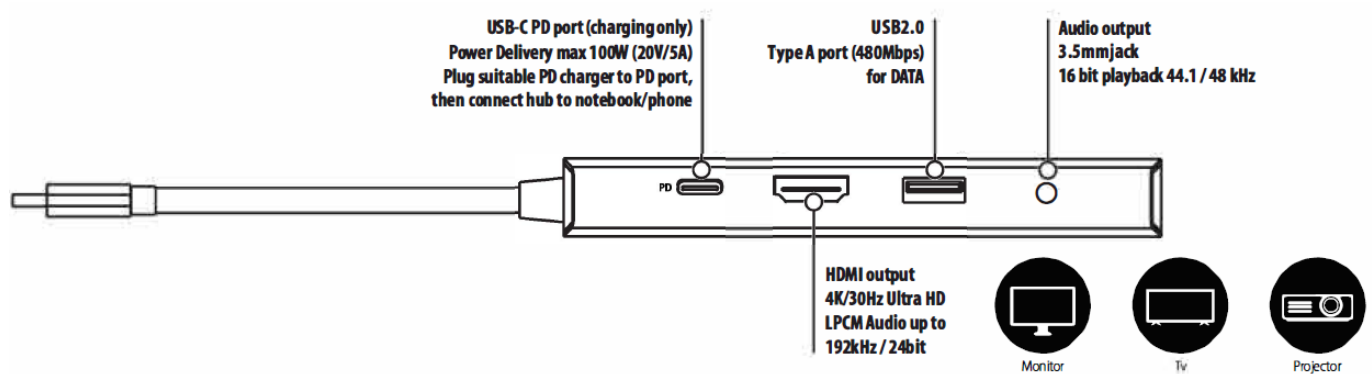
Mobile Device



External Disk



Mouse



TECHNICAL SUPPORT: More information, FAQs, manuals and drivers can be found on the product page in the PRODUCT SUPPORT tab at www.axagon.eu.

Nothing helped? Write to our technical support: support@axagon.cz.



At the end of its service life, do not throw the product into household waste; take it to a collection point for electrical equipment recycling. For information about collection and recycling programmes in your country, contact your local authorities or the retailer who sold you the product.



EU declaration of conformity: The device complies with the harmonisation legislation of the European Union 2014/30/EU (EMC) and 2011/65/EU (RoHS).

The complete EU declaration of conformity is available from the manufacturer.



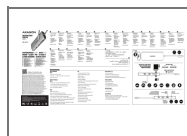
Before using the product, the user is obliged to read the user instructions. The manufacturer disclaims any liability for damage that may occur due to improper use of the product or failure to follow the instructions contained herein. Product use other than specified must be consulted with the manufacturer.



Do not use the product in humid or explosive environments and near flammable substances.

www.axagon.eu

Documents / Resources



[AXAGON HMC-8HLSA Superspeed USB-C Hub](#) [pdf] Instruction Manual

HMC-8HLSA, HMC-8HLSA Superspeed USB-C Hub, Superspeed USB-C Hub, USB-C Hub, Hub

References

- [User Manual](#)

[Manuals+](#), [Privacy Policy](#)

This website is an independent publication and is neither affiliated with nor endorsed by any of the trademark owners. The "Bluetooth®" word mark and logos are registered trademarks owned by Bluetooth SIG, Inc. The "Wi-Fi®" word mark and logos are registered trademarks owned by the Wi-Fi Alliance. Any use of these marks on this website does not imply any affiliation with or endorsement.