



AXAGON ADSA-DC Superspeed USB C Dual HDD SSD Dock with Clone Function Instructions

[Home](#) » [AXAGON](#) » AXAGON ADSA-DC Superspeed USB C Dual HDD SSD Dock with Clone Function Instructions 

AXAGON ADSA-DC Superspeed USB C Dual HDD SSD Dock with Clone Function Instructions



Contents

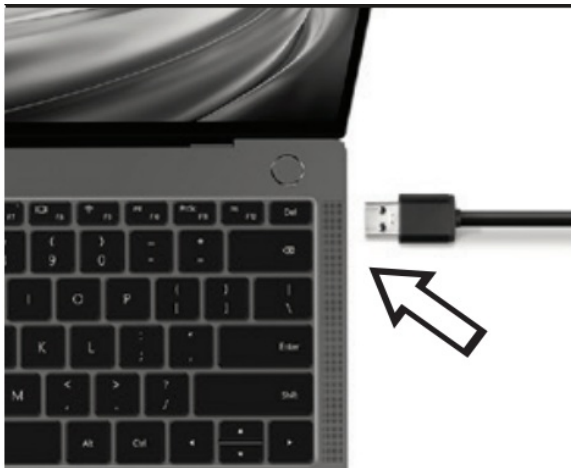
- [1 INSTALLATION STEPS. CONNECTION](#)
- [2 SAFE REMOVAL OF DEVICE](#)
- [3 CLONING/DUPLICATING DISK CONTENT-CLONE FUNCTION](#)
- [4 Documents / Resources](#)
 - [4.1 References](#)
- [5 Related Posts](#)

INSTALLATION STEPS. CONNECTION

1a. CONNECT USB & POWER



1b. PLUG INTO THE POWER OUTLET



3a. INSERT HDD/SSD (OPTION A)



3b. INSERT HDD/SSD (OPTION B)



4. PRESS ON/OFF BUTTON FOR 1 SEC



1. Connect power supply to the DC 12V connector. Use the provided AC/DC 12V/2.SA adapter for power supply
2. Connect the docking station to the computer using the USB 3.0 cable
3. Insert the hard disk in the A or B bay of the docking station.
4. Press briefly (1 sec) the ON/OFF power button at the back of the docking station.
5. The hard disk will be detected and installed automatically.

SAFE REMOVAL OF DEVICE

1. Never remove the hard disk from the station during operation; the disk must be connected for the entire period of operation with the docking station.
2. If you want to disconnect the hard disk, make sure that data copying is finished and the disk A or disk B data transfer indicator is not blinking.

3. Then press the ON/OFF power button to switch off the station. The station with the disk will be disconnected from the computer.
4. However, the safest method of disconnecting disks from computers is to use the function of the Windows operating system-safe removal of hardware. We recommend using this method
5. Only when the docking station is disconnected from the- computer you can disconnect the AC/DC adapter from the station.

INFO

- After connecting to the computer using the USB cable, the hard disk is always automatically Plug&Play detected.
- If the hard disk is detected in the Device Manager, but it is not displayed in the My Computer folder, check that it has been assigned in the Disk Manager
- Initialize and format the new disk in the Disk Manager,

CLONING/DUPLICATING DISK CONTENT-CLONE FUNCTION



2. DO NOT PLUG TO PC USB PORT



3. INSERT SOURCE HDD/SSD A

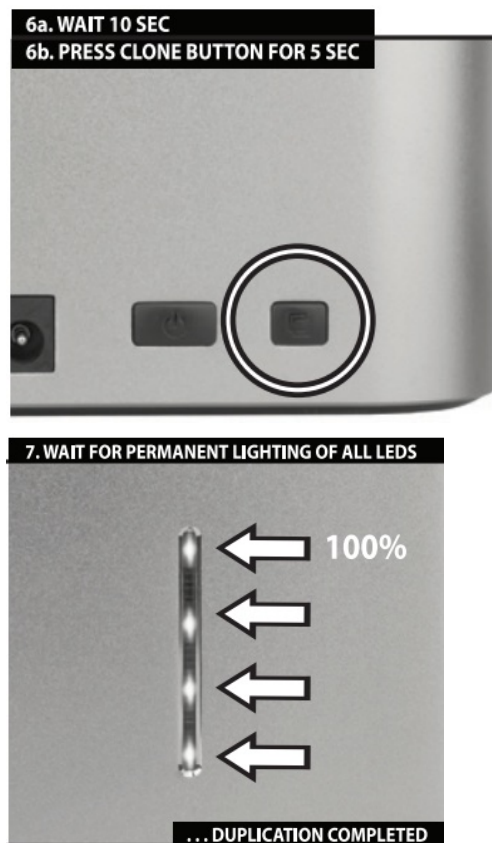


4. INSERT TARGET HDD/SSD B



5. PRESS ON/OFF BUTTON FOR 1 SEC





1. Connect power supply to the DC 12V connector. Use the provided AC/DC 12V/2.5A adapter for power supply.
2. Do not connect the docking station to the computer using the USB cable.
3. Insert the source hard disk into the A bay of the docking station,
4. Insert the target hard disk into the B bay of the docking station.
5. Press the ON/OFF button at the back of the station to switch on power and wait 10 seconds. Power LED lights up.
6. Press the CLONE cloning button for 5 seconds. Data duplication from disk A to disk B will start. All the contents of the A source disk will be copied to the B target disk.
7. During duplication, indication diodes will be blinking. Data duplication is finished when all LEDs light continuously.


INFO

- The size of the B target disk must be equal or larger than the size of the A source disk.
- If the B target disk is larger than the A source disk, the remaining space on this target disk is not assigned. The unassigned space can be managed in the Disk Manager in Windows,
- The cloned B disk is an identical copy of the A disk and it also takes the ID of the source disk. Therefore Windows will switch off one of the disks if both are connected to the computer after cloning. The switched off disk can be switched over again to the online mode in the Disk Manager in Windows

FOR DETAILED INFORMATION AND MANUAL GO TO PAGE:

www.axagon.eu

Documents / Resources

	AXAGON ADSA-DC Superspeed USB C Dual HDD SSD Dock with Clone Function [pdf] Instructions ADSA-DC Superspeed USB C Dual HDD SSD Dock with Clone Function, ADSA-DC, Superspeed USB C Dual HDD SSD Dock with Clone Function, Dual HDD SSD Dock with Clone Function, SSD Dock with Clone Function, Clone Function
---	--

References

- [User Manual](#)