



AXAGON ADSA-D25 Superspeed USB Dual 2.5 Ich HDD or SSD Mini Dock With Clone Function Instruction Manual

[Home](#) » [AXAGON](#) » AXAGON ADSA-D25 Superspeed USB Dual 2.5 Ich HDD or SSD Mini Dock With Clone Function Instruction Manual 

Contents

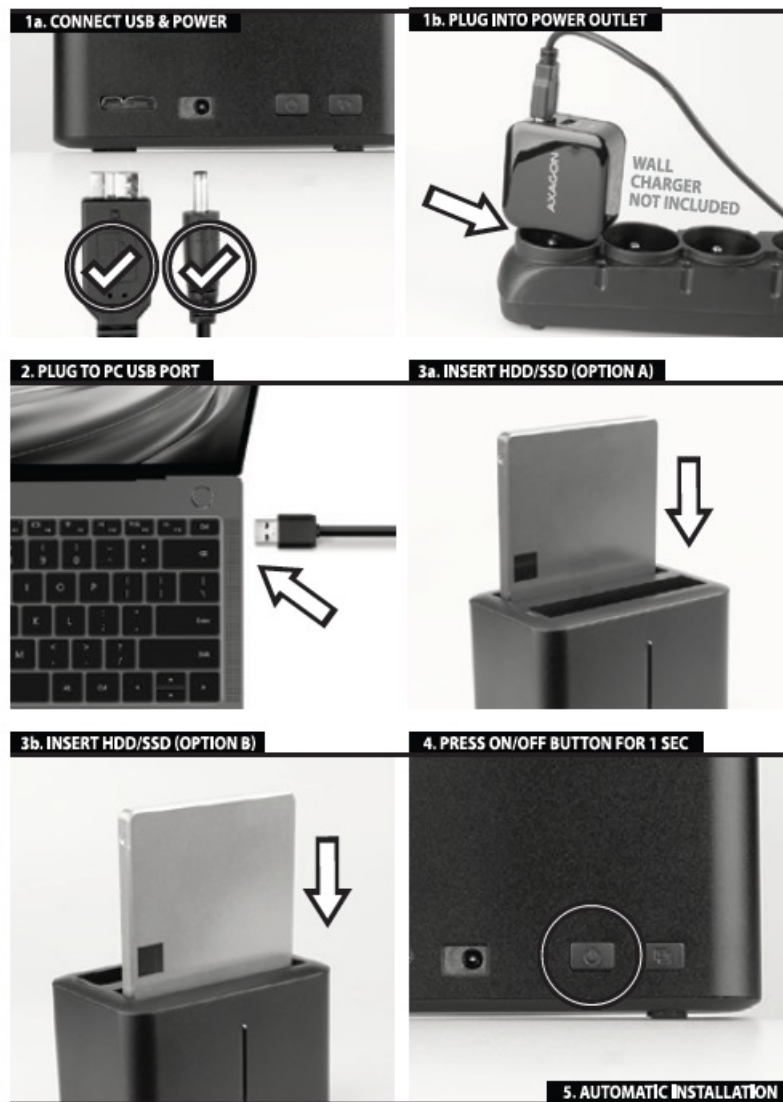
- [1 AXAGON ADSA-D25 Superspeed USB Dual 2.5 Ich HDD or SSD Mini Dock With Clone Function](#)
- [2 INSTALLATION STEPS connection](#)
- [3 SAFE REMOVAL OF DEVICE](#)
- [4 INFO](#)
- [5 CLONING/DUPLICATING DISK CONTENT CLONE](#)
- [6 Documents / Resources](#)
- [7 Related Posts](#)

AXAGON

AXAGON ADSA-D25 Superspeed USB Dual 2.5 Ich HDD or SSD Mini Dock With Clone Function

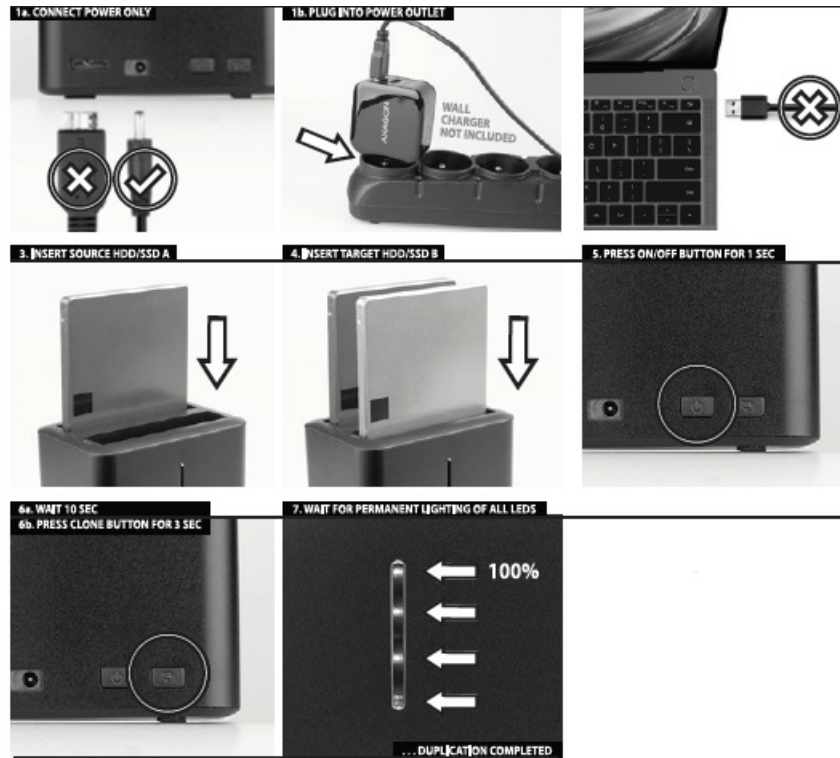


INSTALLATION STEPS connection

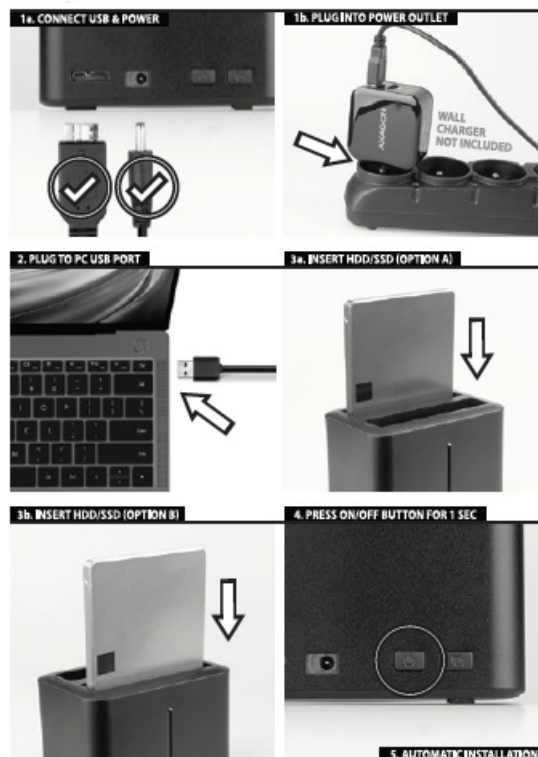


1. Connect the power cable to the USB port or suitable USB charger, then connect the cable to the connector. For charging use only supplied cable
2. Connect the docking station to the computer using the USB 3.0 cable.
3. Insert the hard disk in the HDD A or HDD B bay of the docking station.
4. Press briefly (1 sec) hard disk will be detected
5. The disk will be detected and installed automatically.

SAFE REMOVAL OF DEVICE



1. Never remove the hard disk from the station during operation; the disk must be connected for the entire period of operation with the docking station
2. If you want to disconnect the hard disk, make sure that data Copying is finished and the HDD A or HDD B data transfer indicator is not blinking.
3. Then press the ON/OFF power button to switch off the station.
4. The station with the disk will be disconnected from the Computer.
5. However, the safest method of disconnecting disks from computers is to use the function of the Windows operating system-safe removal of hardware. We recommend using this method.



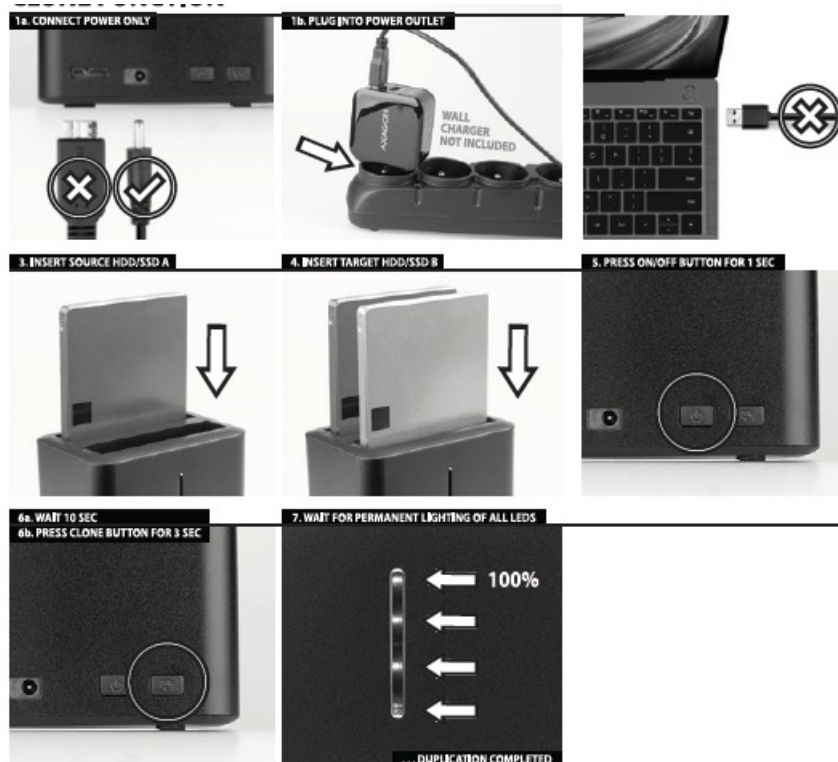
INFO

After connecting to the a computer using the USB cable, the hard disk is always automatically Plug&Play detected. If the hard disk is detected in the Device Manager, but it is no displayed in the My Computer folder, check that it has been assigned in the Disk Manager. Initialize and format the new disk in the Disk Manager.

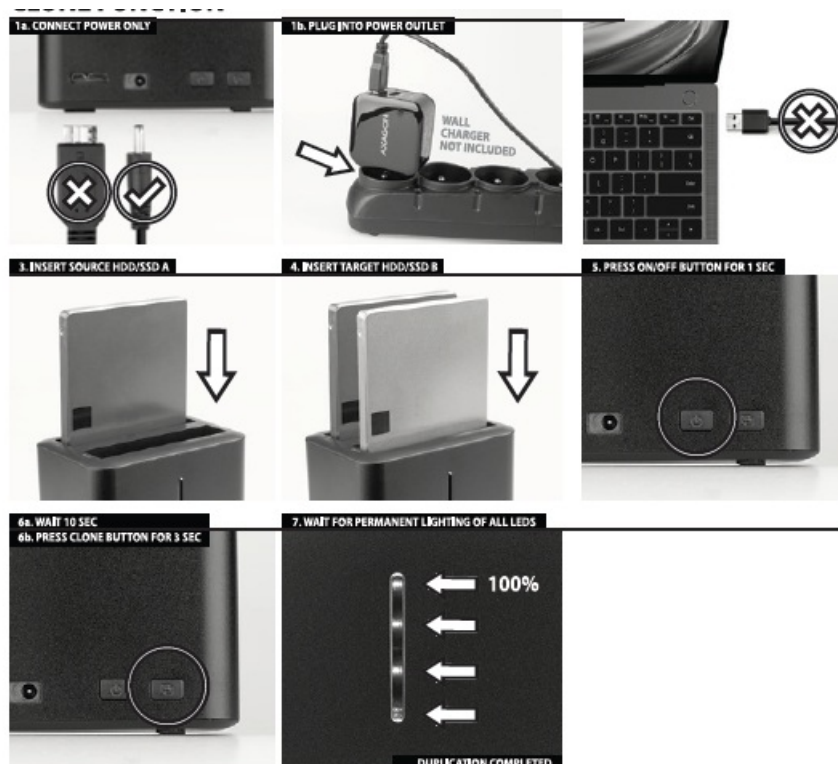
CLONING/DUPLICATING DISK CONTENT CLONE

FUNCTION


1. Connect the power cable to the USB port or suitable USB charger, then connect the cable to a DC 5V connector. For charging use only supplied cable.



2. Do not connect the docking station to the computer using the USB cable.
3. Insert the source hard disk into the HDD A bay of the docking station.
4. Insert the target hard disk into the HDD B bay of the docking station.
5. Press the ON/OFF button at back of the station to switch on the power. Green Power LED lights up.



Documents / Resources

	<p>AXAGON ADSA-D25 SuperSpeed USB Dual 2.5 Inch HDD or SSD Mini Dock With Clone Function [pdf] Instruction Manual</p> <p>ADSA-D25, SuperSpeed USB Dual 2.5 Inch HDD or SSD Mini Dock With Clone Function, ADSA-D25 SuperSpeed USB Dual 2.5 Inch HDD or SSD Mini Dock With Clone Function, ADSA-D25 SuperSpeed USB Dual 2.5 Inch HDD or SSD Mini Dock, SuperSpeed USB Dual 2.5 Inch HDD or SSD Mini Dock</p>
---	---