



aws JKN06204 Camera User Manual

[Home](#) » [aws](#) » aws JKN06204 Camera User Manual 

aws JKN06204 Camera



Contents

- [1 Introduction](#)
- [2 Main Function Description](#)
- [3 Download APP](#)
- [4 Add Device](#)
- [5 Function Introduction](#)
- [6 FAQ](#)
- [7 After-sales Instructions](#)
- [8 Documents / Resources](#)
 - [8.1 References](#)
- [9 Related Posts](#)

Introduction

Dear users, you are welcome to choose this product. Before using the product, please read the instruction manual carefully and keep it for later reference.

Main Function Description



Cloud Storage



News push



Humanoid
detection



Motion
detection



Sound
detection



Infrared night
vision



Mobile phone
remote



TF card storage



Wifi connection



PTZ rotation



Platform view



Remote switch



High Definition
Recording



Two-way audio



Video playback

Download APP

Scan the QR code and download. Please search for "YCC365 Plus" download.

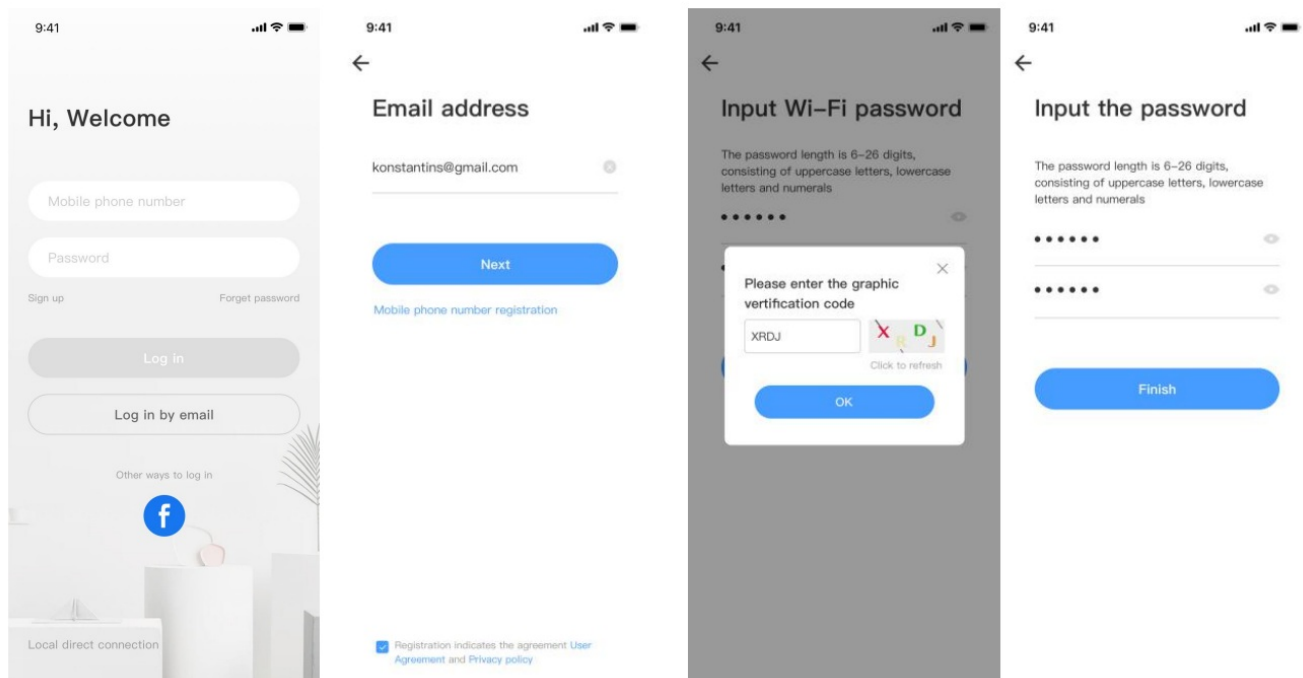


Add Device

Register an account

- When you use this app at the first time, you need to use your email to register an account, click" Sign Up" and set a password according this procedure, or choose Long in with mobile phone number.
- If you forget your password, you can reset your password, just click "Forgot password" on the login page.
- Password should be at least 6 characters and not longer than 26 characters, It should be a combination of

letters and numbers.



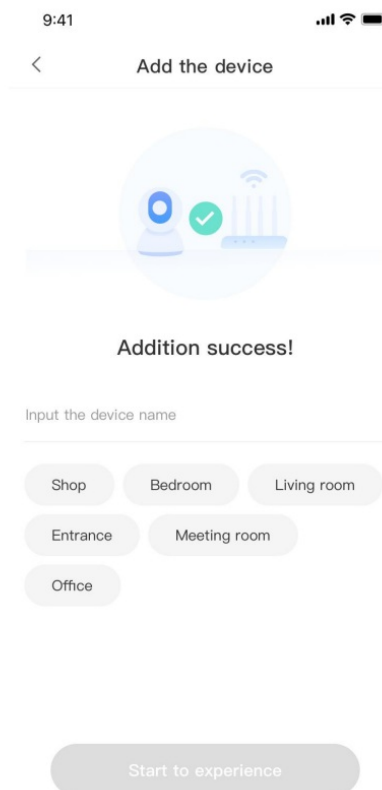
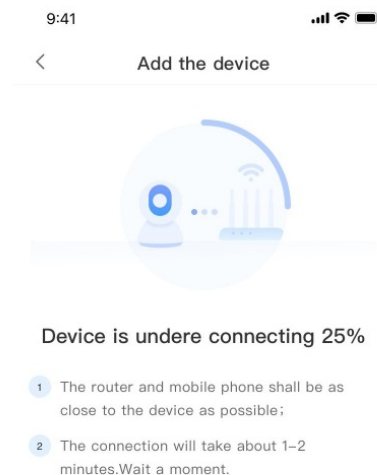
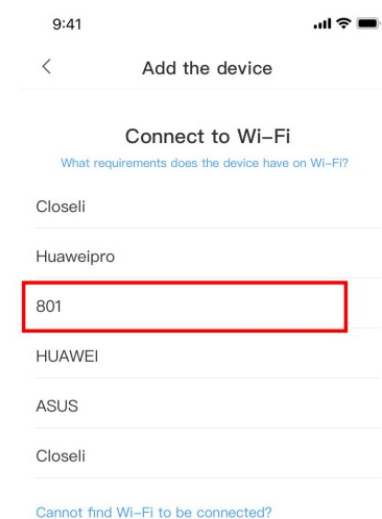
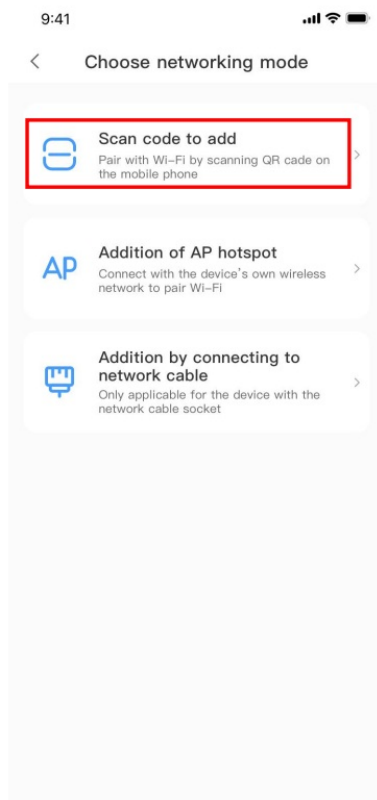
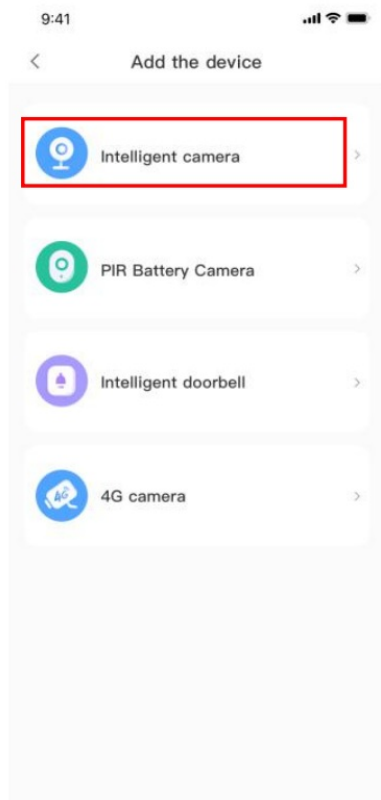
Only support mobile phone number registration in some regions.
Please use email to register in other areas.

Connect the camera

Note: Camera only supports 2.4G WIFI before adding devices, make sure your router is 2.4G WIFI, and your phone is connected to 2.4G Wi-Fi.

Scan code to add

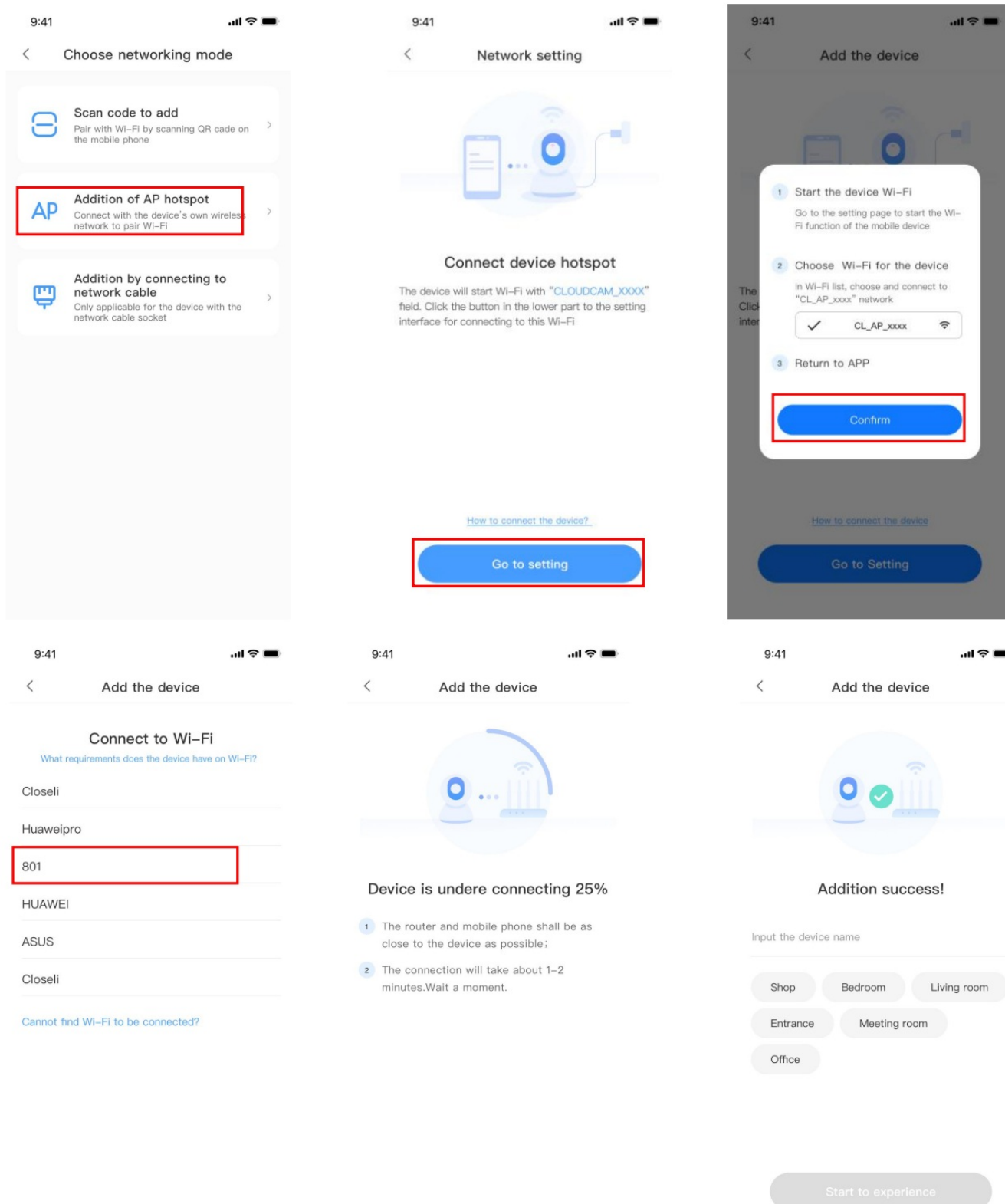
- Please make your phone connect to the Wi-Fi.
- Select your own 2.4GWi-Fi and enter your password.(5G network is not supported).
- Scan the camera lens toward the QR code of the phone,(Align the QR code with camera lens at a distance of 10-20cm)Hear a voice prompt, Click” When you hear a beep or a green light” after hearing the beep, Keep the camera case close as possible to the router, The connection process takes about 1-2minutes,after you will hear welcome to use camera.



Addition of AP hotspot

- Click the button in the upper right corner on the app homepage.
- Choose the Addition of AP hotspot, Plug in the power to the camera, Wait patient for the device light to blink or hear a tone, Click Next when done.
- If you don't see any tips, try resetting your device, Find the reset button, Long press for at least 5s, click next after prompted.

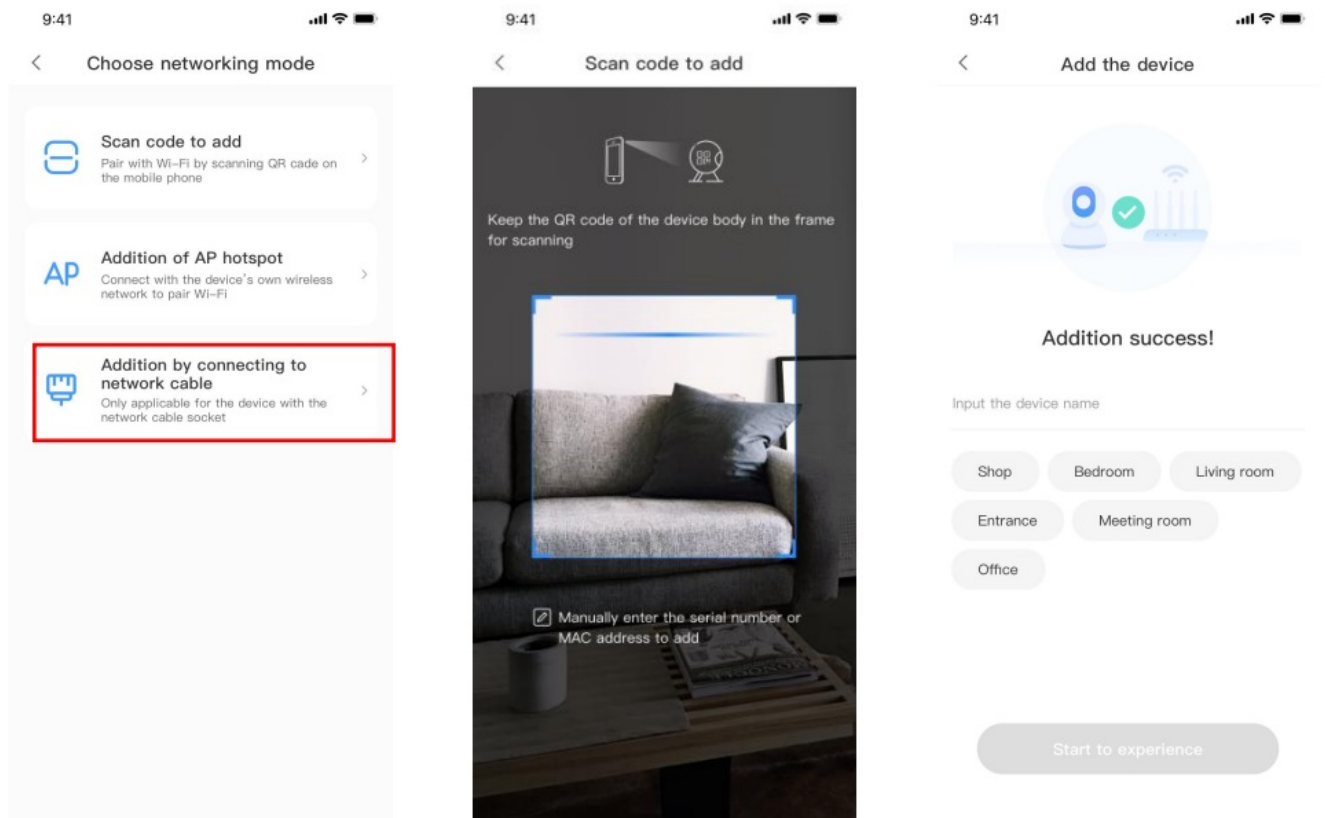
- please go to the Wi-Fi list and connect the Wi-Fi in the blue field “CLOUDCAM_XXXX” Select the Wi-Fi that matches the prefix and connect Return to APP after successful connection.
- After connecting the device successfully click next, Choose your router Wi-Fi, Enter Wi-Fi password, Click confirm, Addition is successful, then your can preview the screen.



Addition by connection to network cable (Only support Lan port device)

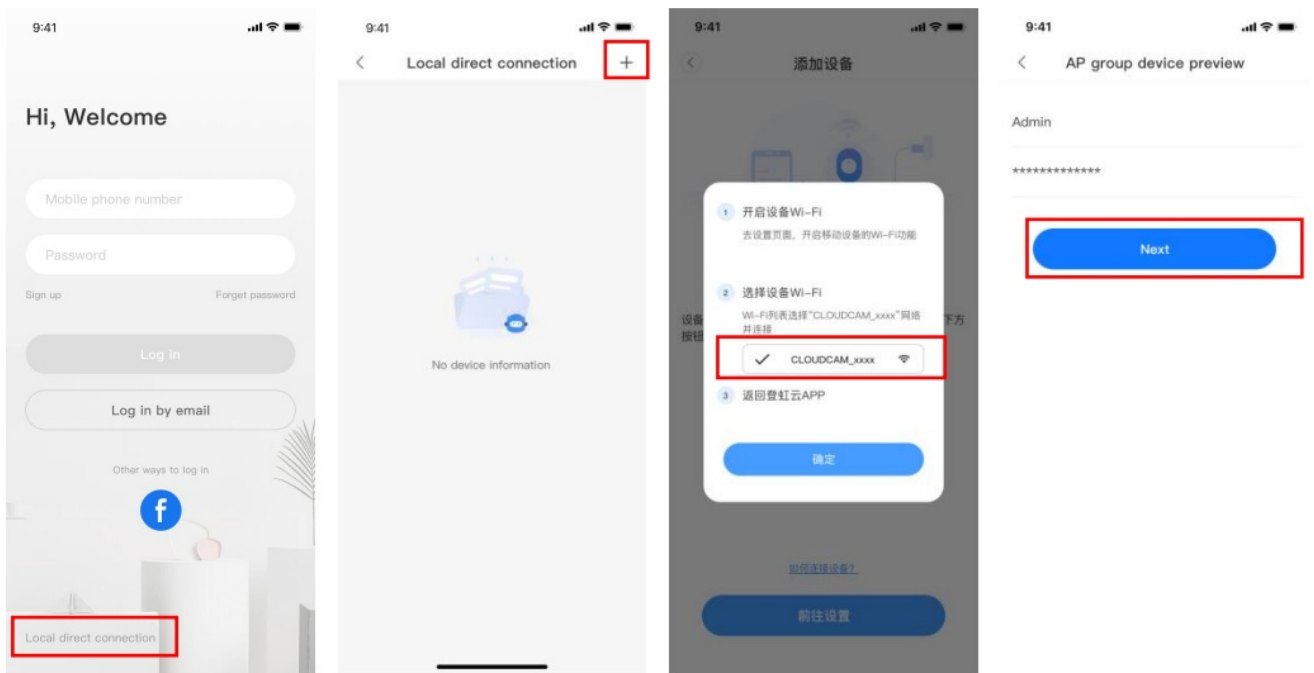
- Click the button in the upper right corner on the app homepage.
- Choose the device type intelligent camera, choose the addition by connecting to network cable.

- Plug in the power to the camera, Device network port is connected to the network cable Scan device body QR code, put the QR code on the device body into the box and scan it.
- Please wait patiently ,The connection process takes about 1-2minutes,after you will hear welcome to use camera.



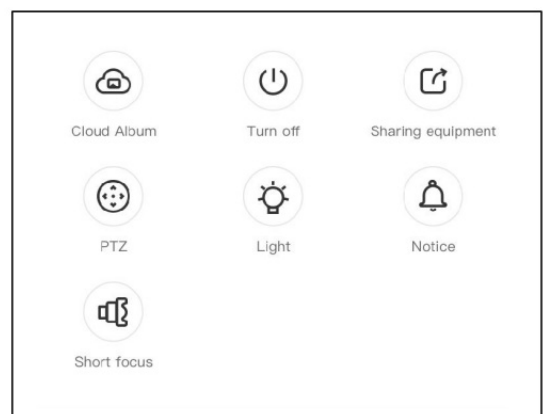
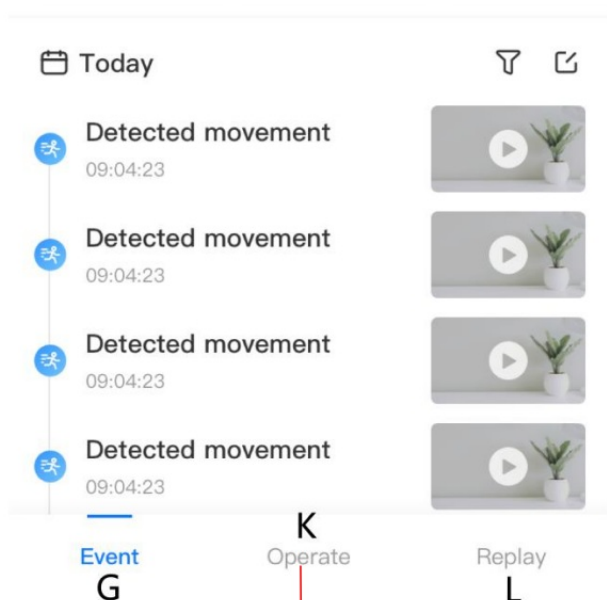
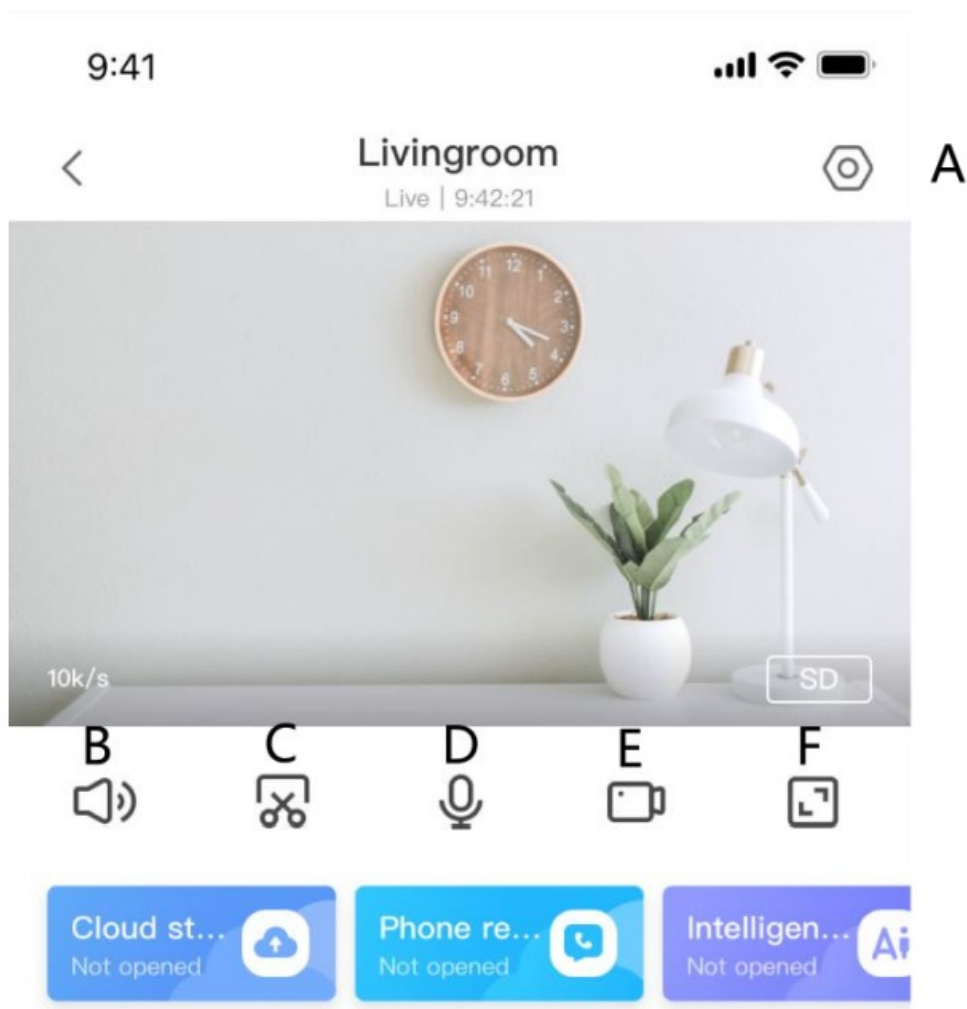
AP Direct mode (special)

- Open the YCC365plus app to enter the login interface, click "Local login" .
- Click the button in the upper right "+" on the app homepage.
- Click "AP networked device preview" and Click "Next" .
- Go to Setting Network click your phone connect to "CLOUDCAM_XXXX" network.
- Network setting set the Wi-Fi has been connected with this device and Click "Next" .
- Enter user Name: admin Password: 12345 Click "Next", then your can preview the screen.



Function Introduction

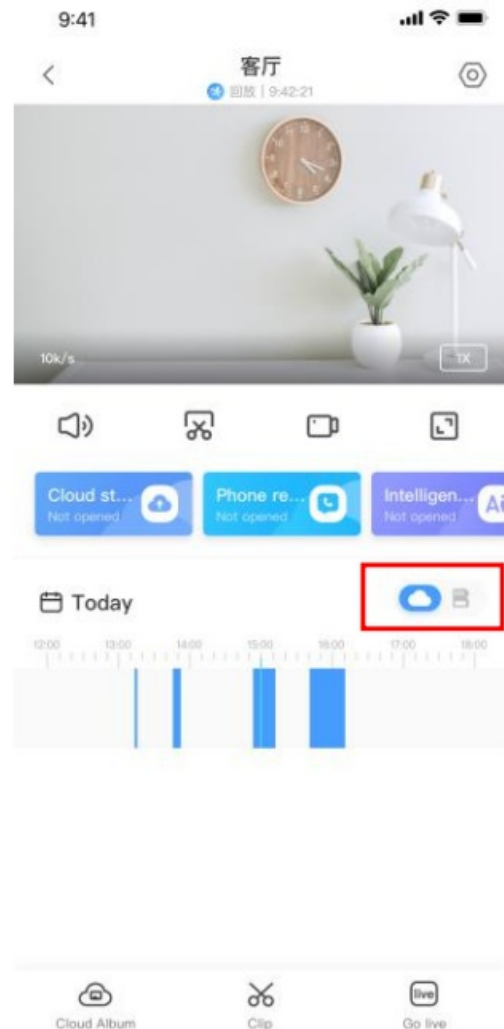
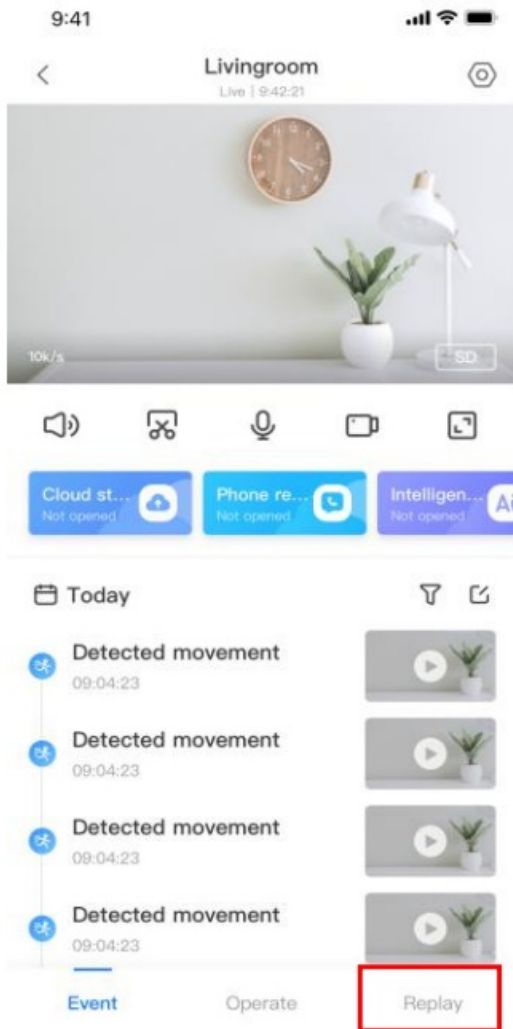
- **A** Parameter Menu
- **B** Sound
- **C** Clip
- **D** Hold to talk
- **E** Video to the phone
- **F** Full Screen
- **G** Event
- **K** Operate
- **L** Replay




Video playback

Reminder: Cloud video playback needs to be purchased and paid before it can be used.

A: Select “Replay” at the bottom right corner of the live interface to view the playback video of the camera.
B: Switch playback path, you can choose to watch cloud playback/memory card playback.



Preferences

- Click “” in the preview screen check the parameter menu.

9:41	Signal, Wi-Fi, and battery icons
< Setting	
Device details	Device related settings upgrade device firmware
Device settings	Device time zone, night vision device switch, Image rollover 180°
Message settings	Notice Motion or Sound detection
Cloud storage management	Cloud store management
Memory card management	SD memory card management
Sharing equipment	Sharing equipment
Network information	Network information
Reboot device	Reboot device
Remove device	

FAQ

- How to watch the camera on the computer?
 - Log in to the computer browser input: www.ucloudcam.com ,Enter user Name and Password Log in.
- Why does it Intermittent video recording ?
 - The size of the video file is limited, Once the video size close to the critical value, the video file will be created and the next video will continue to be recorded, there is a interval but so short.
- Why does the camera is disconnected?
 - Please check Wi-Fi or whether the power switch is normal, If it's normal, Please Restart camera, Or delete the camera in the APP and Please reconnect the camera.
- How to add family email account ?
 - Comer on the App homepage, Click Settings to choose a shared device, Add family Email.
- How many people access an account at the same time?

- There is no limit to the number of people who can access the account, But the same camera can support 3 peoples to view the same time.
6. Cannot recognize TF card?
- Please check whether the TF card meets the quality requirements. If the Wi-Fi signal is poor, it may be that the card cannot be read.
7. After the cloud service expires, the recording timeline is blank.
- After the cloud service expires, the video cannot be replayed. If there is no TF card in the camera, the video cannot be recorded.
 - If the TF card can always work, but the video file disappeared, please check the “Check TF card” status.
 - If it is normal in the application but no video has been recorded, please format the TF card. If it still cannot be used, please replace it with a new TF card and try again.
8. Cannot read the wireless network name after connecting to the I phone
- First, IOS and Android devices need to enable location permissions.
 - Connect the iPhone to the Wi-Fi network through configuration, and then add the camera, which can automatically read the network name.
9. Why can't I switch to another account to configure the camera WIFI?
- The camera can only be bound to one account, and other accounts can only be viewed through the sharing mechanism, If other accounts need to reconfigure the camera, please use the APP in the delete camera first.
10. How to connect my camera to other Wi-Fi?
- Two ways:
 - A: When you need to change to another Wi-Fi without moving the location.
Parameter setting >> Network information >> Select Wi-Fi.
 - B: When the camera is replaced and no other WIFI can be found, please try resetting your device, in the app homepage will prompt “device offline”, click “Troubleshooting”, reset the camera, and then add WIFI again.

After-sales Instructions

1. The product is subject to the actual product, this manual is for reference only.
2. The product is updated in real time, If there are any upgrades without notice, please check the official website.
3. This manual introduces the basic functions of the product, please check and operate by yourself.
4. If you have any problems when using the camera, please contact the supplier or company in time.
5. We have tried our best to ensure the completeness and accuracy of the contents in the manual, but some data may still exist.
6. If there is any deviation, if you have any questions or disputes, please refer to the final explanation of the company.
7. If you do not follow the instructions in the manual, you will bear any responsibility.

This manual applies to consumer products.

This device complies with part 15 of the FCC Rules. Operation is subject to the following two conditions: **(1)** This device may not cause harmful interference, and **(2)** this device must accept any interference received, including interference that may cause undesired operation.

Any Changes or modifications not expressly approved by the party responsible for compliance could void the


user's authority to operate the equipment.

Note: This equipment has been tested and found to comply with the limits for a Class B digital device, pursuant to part 15 of the FCC Rules. These limits are designed to provide reasonable protection against harmful interference in a residential installation.

This equipment generates uses and can radiate radio frequency energy and, if not installed and used in accordance with the instructions, may cause harmful interference to radio communications. However, there is no guarantee that interference will not occur in a particular installation. If this equipment does cause harmful interference to radio or television reception, which can be determined by turning the equipment off and on, the user is encouraged to try to correct the interference by one or more of the following measures:

- Reorient or relocate the receiving antenna.
 - Increase the separation between the equipment and receiver.
 - Connect the equipment into an outlet on a circuit different from that to which the receiver is connected.
 - Consult the dealer or an experienced radio/TV technician for help.
 - This equipment complies with FCC radiation exposure limits set forth for an uncontrolled environment. This equipment should be installed and operated with minimum distance 20cm between the radiator & your body.
-

Documents / Resources

	aws JKN06204 Camera [pdf] User Manual JKN06204 Camera, JKN06204, Camera
---	--

References

- ucloudcam.com
- [User Manual](#)

Manuals+, [Privacy Policy](#)

This website is an independent publication and is neither affiliated with nor endorsed by any of the trademark owners. The "Bluetooth®" word mark and logos are registered trademarks owned by Bluetooth SIG, Inc. The "Wi-Fi®" word mark and logos are registered trademarks owned by the Wi-Fi Alliance. Any use of these marks on this website does not imply any affiliation with or endorsement.