



AWOW AK34 Mini Desktop Computer with Windows 10 Pro User Guide

[Home](#) » [AWOW](#) » AWOW AK34 Mini Desktop Computer with Windows 10 Pro User Guide 

Contents

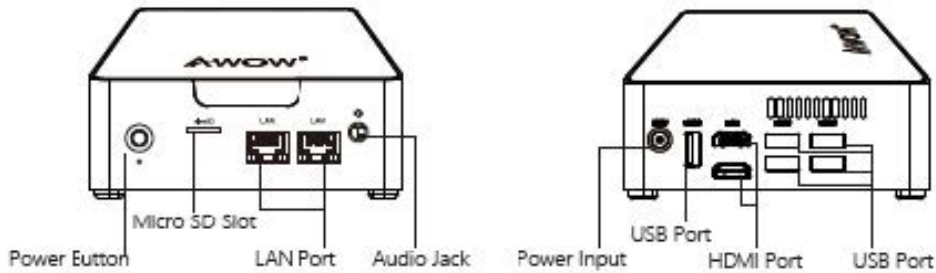
- [1 AWOW AK34 Mini Desktop Computer with Windows 10 Pro](#)
- [2 Product Specification](#)
- [3 The way to contact us:](#)
- [4 Documents / Resources](#)
 - [4.1 References](#)
- [5 Related Posts](#)



AWOW AK34 Mini Desktop Computer with Windows 10 Pro



Port Layout



Product Specification

- **CPU:** Intel Celeron N3450
- **GPU:** Intel HD Graphics 500
- **RAM:** 6GB
- **Storage:** 128GB/ 256GB SSD
- **Ethernet:** 100/1000M Gigabit Ethernet x 2
- **Wireless:** 802.11 ac Wi-Fi / Bluetooth 4.0
- **OS:** Windows 10 Home (64bit)
- **Connectivity:** USB 3.0 x 5, HDMI 1.4 x 2, TF card slot x 1, 2.5" SATA III HDD/SSD (Optional)

There is a list for some questions other customers who ask, we hope that could help.

1. The mini pc requires a Microsoft account to start up the windows

A That's now windows 10 system all requires. If you want to skip the Microsoft account, when you met the internet connection choice, please choose off the internet, that would help

2. Have problems with windows activation?

A: The Digital Key has been attached by the package (only for AK34 128GB version), please try to activate the windows manually with the key again.

If still have problems, please send us your order ID, the windows activation page and device SN (which could be seen on the device) for our reference. We will try our best to solve it as quick as we can.

3. The image is too large /small for the screen?

A: Find your TV's display actual resolution;

B: Go to setting >> Display>> adjust the Display resolution your TV's resolution. Make sure the "Change the size of text, apps and other items" is 100%(Recommend)

C: If still not ok, go to your TV Menu setting;

Menu >> picture size / Aspect Ratio or something similar >> pick between setting like 16:9, 4: 3, Zoom, Super Zoom and so on;



4. My mini pc has an exist account – default user, how could I do?

A: To solve this problem, you could refer to this instruction: Default User ; That problem often caused by two ways:

1. Abnormal power outage when your first initial up;
2. Abnormal power outage after the factory inspector finished the product inspection in the factory mode.

5. Where could I set the auto power-on, wake-on-LAN function?

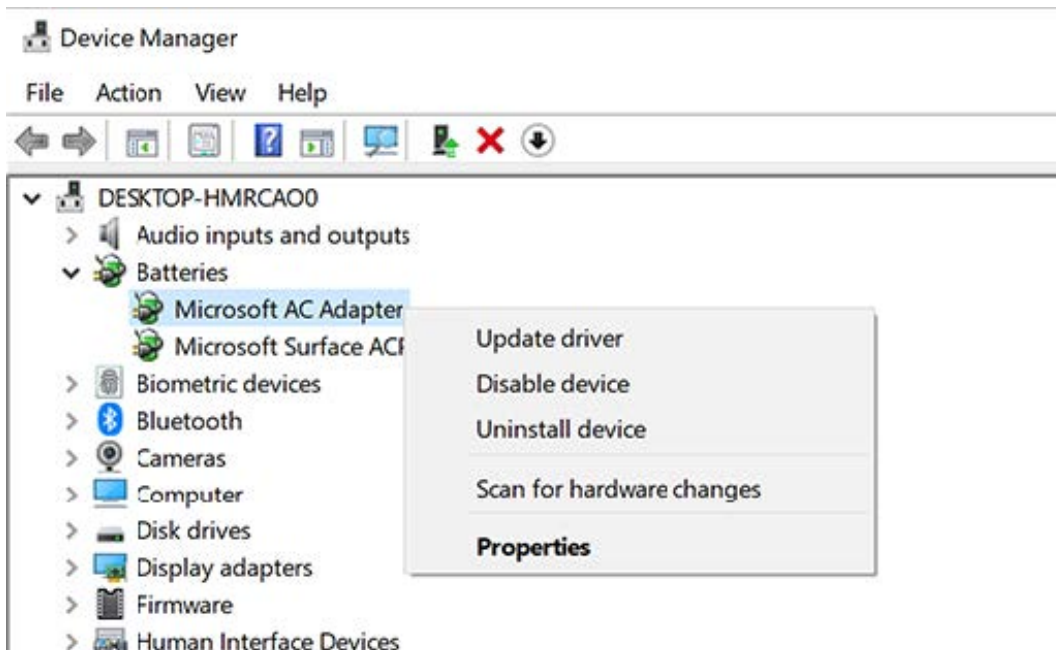
A: Continue to press the Delete button while booting>> Go to BIOS>> Choose the option you want to set.

6. The mini pc does not have Bluetooth or Wi-Fi

A: That caused by the driver lost during windows upgrading.

Go to Setting >> Search Device manager >> Check if there is an Exclamation mark >>

Right-click the related devices>>select automatically for updated driver software >> select Update Driver.



If windows doesn't find a new driver, please contact us.

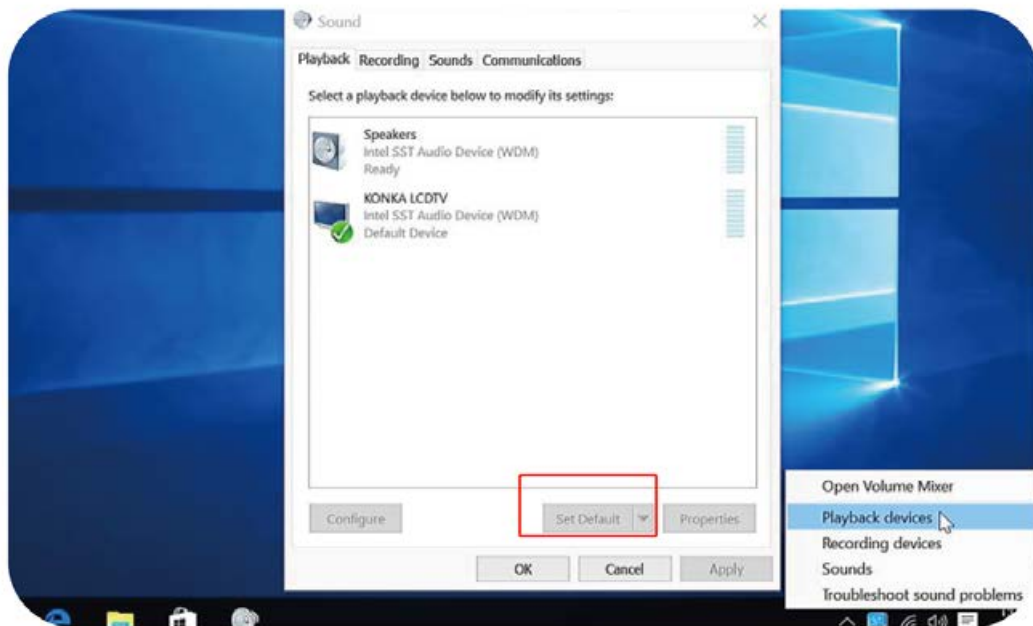
7. No audio output via an HDMI device or Audio digital devices

A: Access the Sound Settings via the System Control Panel.

B: Under Playback devices, click the display device that corresponds with your HDMI audio compatible display.

C: Click the Set Default button in the lower right hand corner.

D: Click OK to exit the setup



The way to contact us:

1. Go to [Amazon.com](https://www.amazon.com) website
2. Select Returns& Orders
3. Select the Order, there is a Ask seller option, click it.

Or send the email to : awow_support@cqtq.com.cn, we will reply you in 24 hours.

Documents / Resources

	<p>AWOW AK34 Mini Desktop Computer with Windows 10 Pro [pdf] User Guide AK34, Mini Desktop Computer with Windows 10 Pro, AK34 Mini Desktop Computer with Windo ws 10 Pro, Mini Desktop Computer, Mini PC</p>
---	--

References

- [a Amazon.com. Spend less. Smile more.](https://www.amazon.com)