

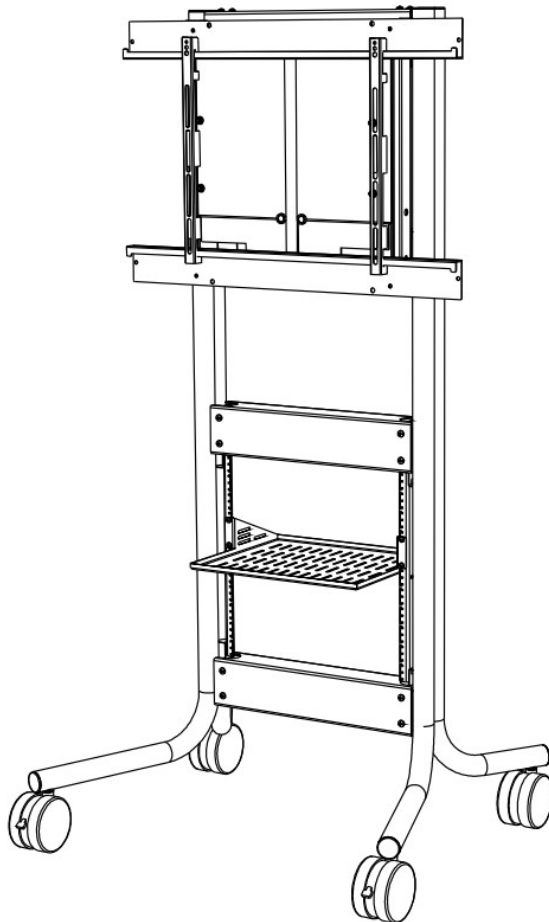


AVTEQ DynamiQ RPS-500 Height Adjustable Mobile Display Instructions

[Home](#) » [AVTEQ](#) » AVTEQ DynamiQ RPS-500 Height Adjustable Mobile Display Instructions 



EASY SETUP GUIDE
DynamiQ RPS-500



Contents

1 Items Included

2 Documents / Resources

2.1 References

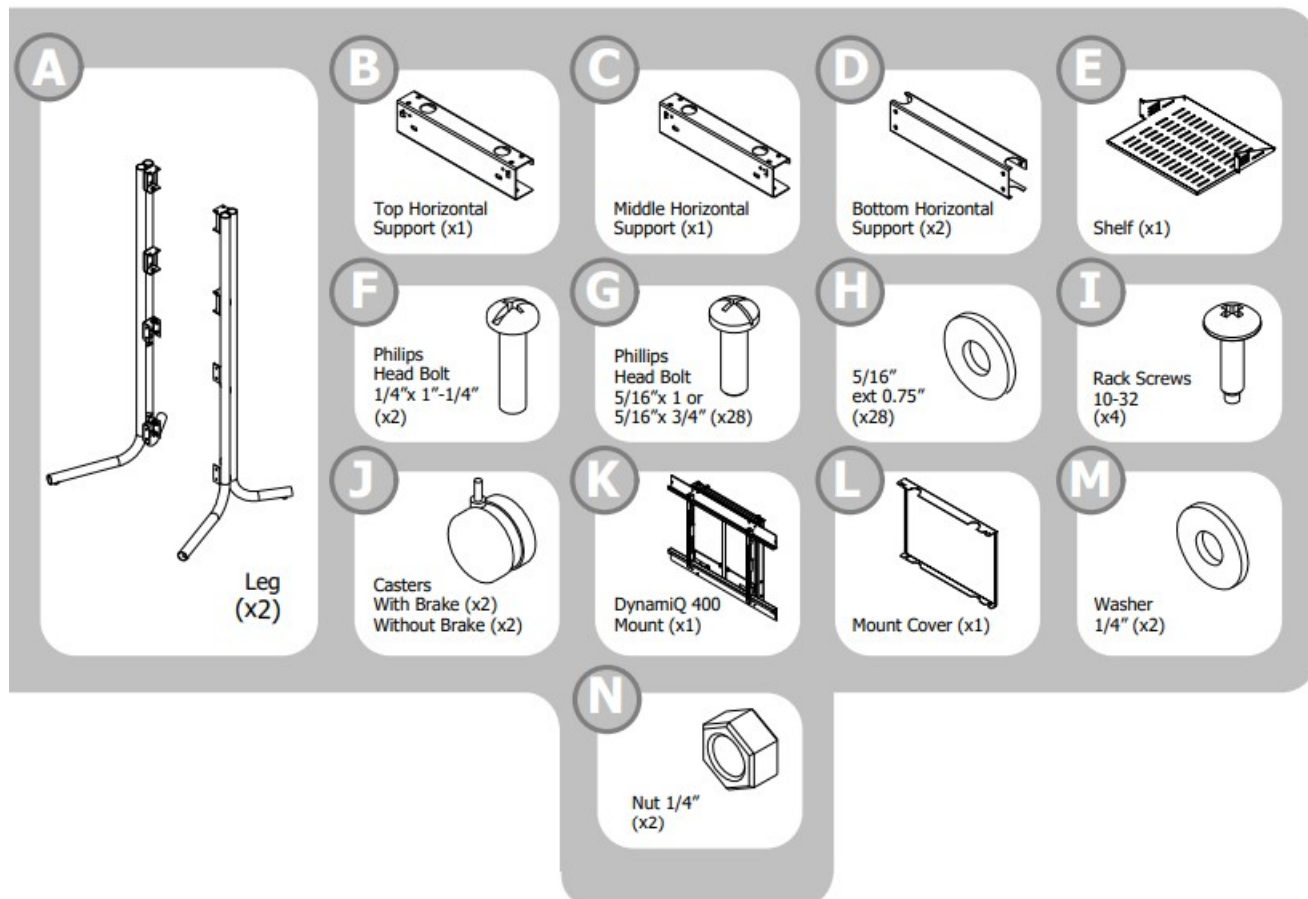
3 Related Posts

Items Included

Items needed for install

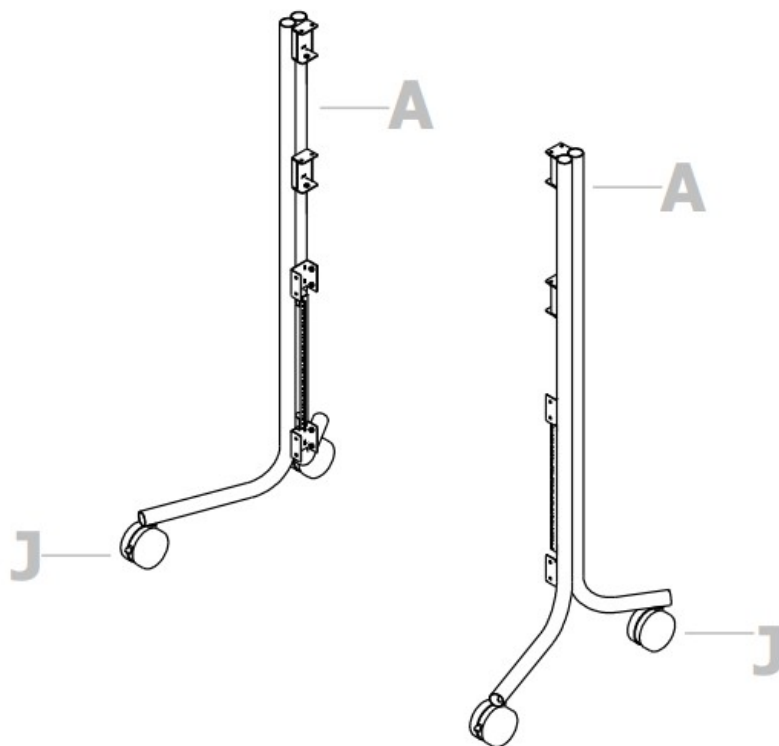
-Phillips screw driver

-Wrench 3/4"



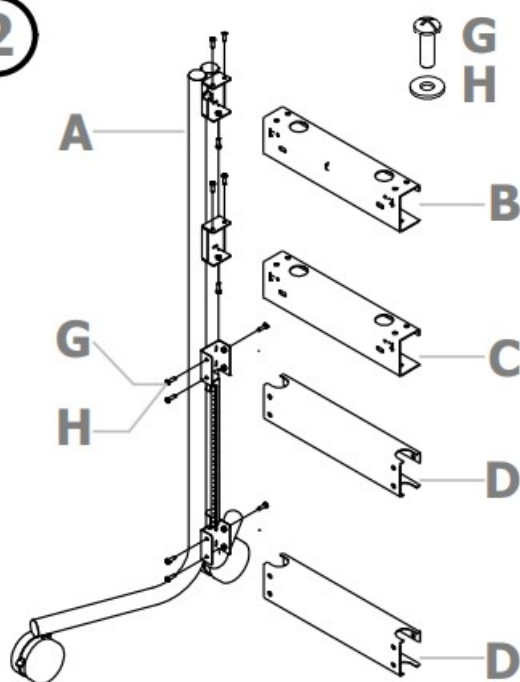
Install Tip: As you are installing the bolts and nuts, leave them all loose. Install all of them before tightening. Attach Casters (J) to the end of each Leg (A). Make sure the Casters with Brakes are installed in the front of the cart.

1

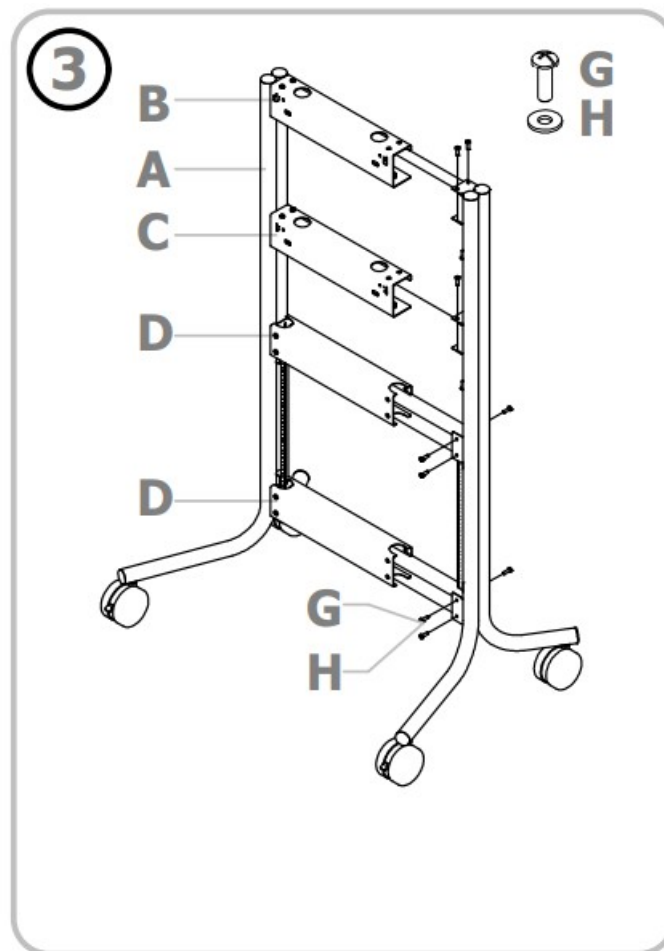


Attach each of the Horizontal Supports (B) (C) (D) to the first Leg (A) using the Bolts (G) and Washers (H) as shown. Make sure the flat side of each support is facing the front of the cart.

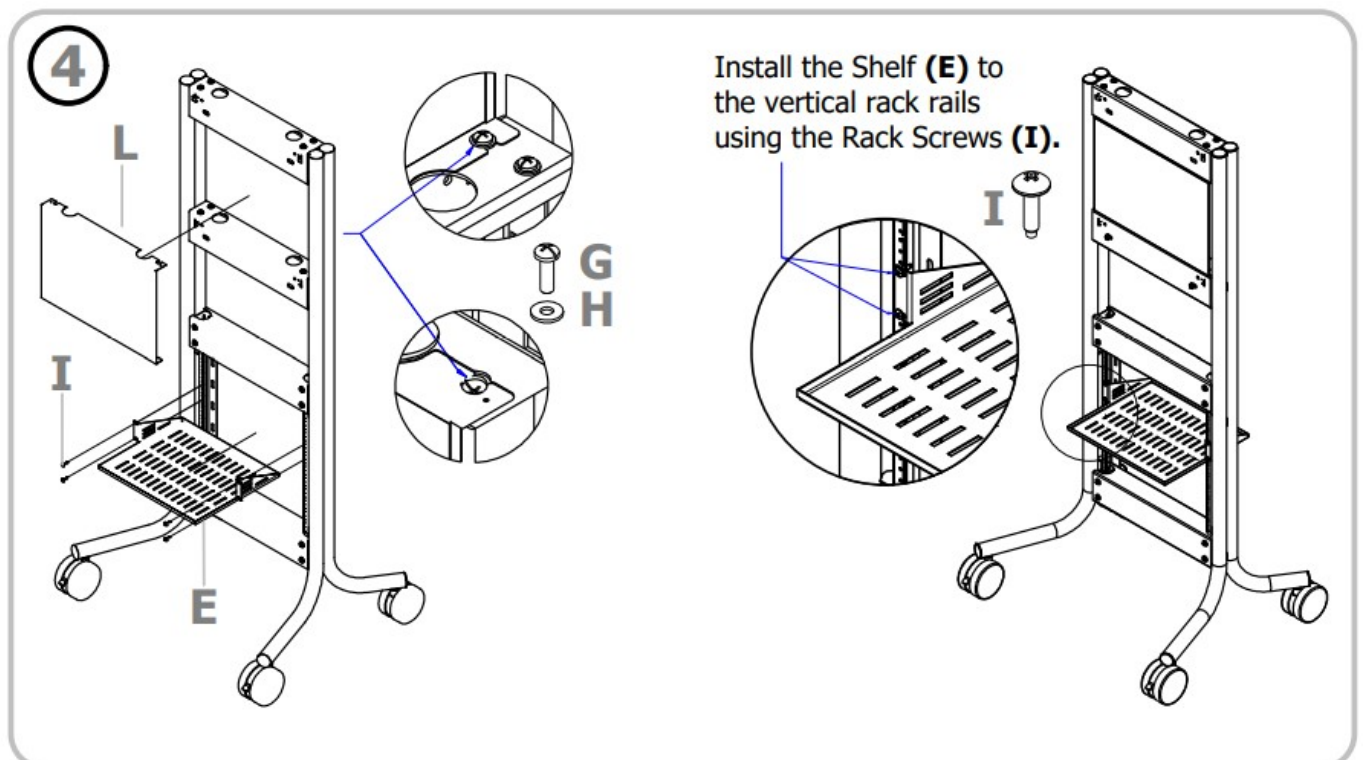
2



Attach the other Leg (A) to the Horizontal Supports (B) (C) (D) using the Bolts (G) and Washers (H) as shown.

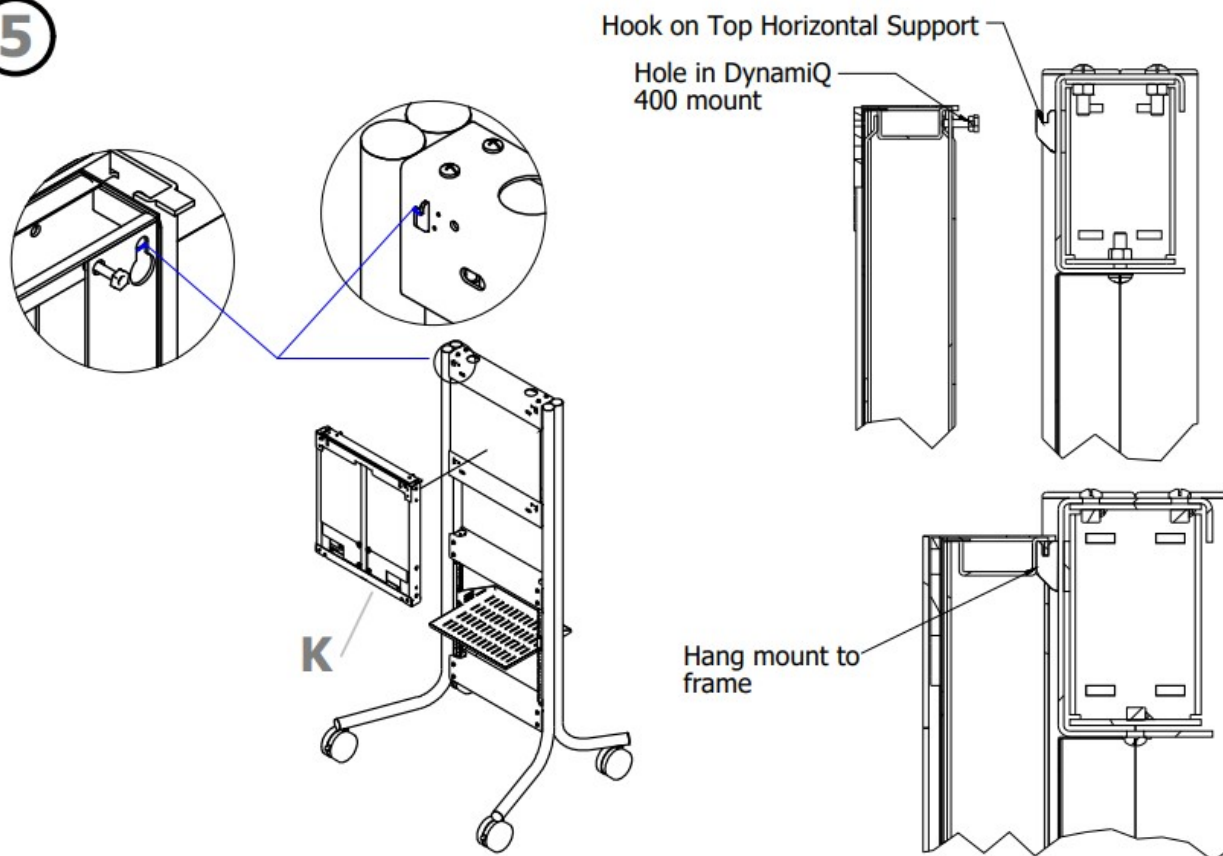


Secure Mount Cover (L) between the Top and Middle Horizontal Supports using the Phillips Head Bolts (G) and Washers (H) as shown.

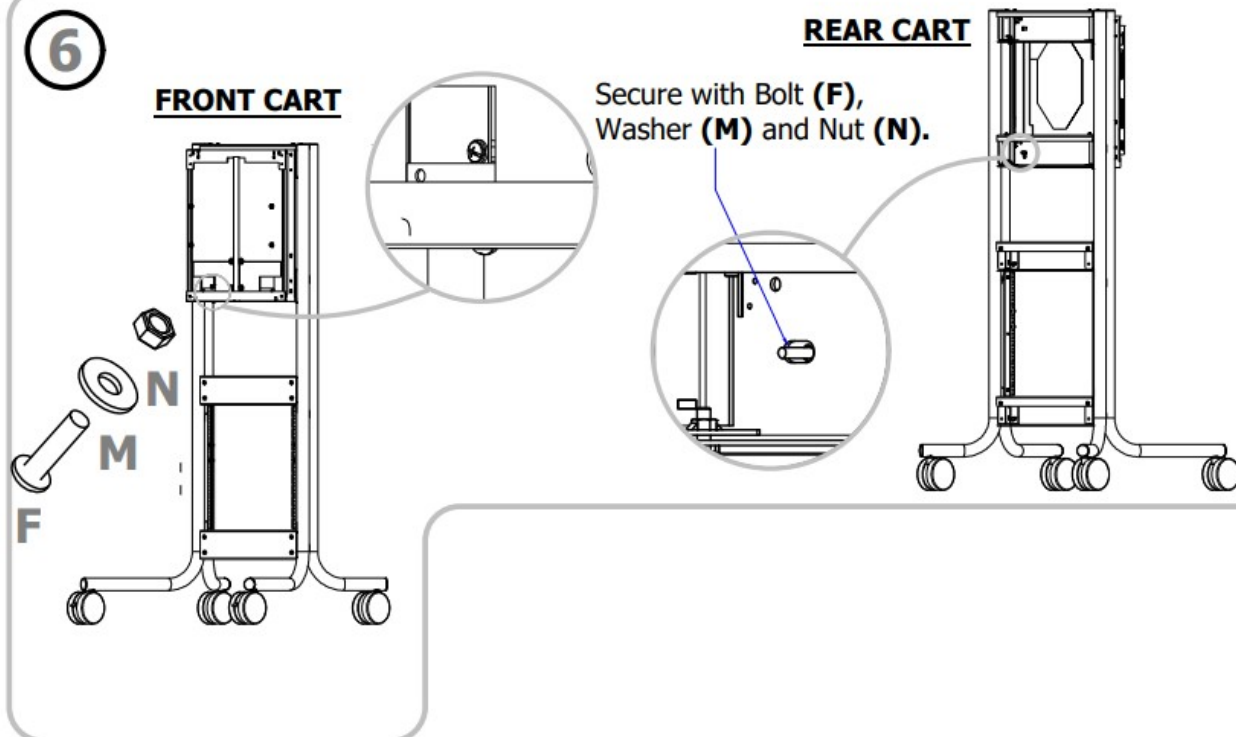


Attach the DynamiQ 400 Mount (K) to the frame by aligning the holes on each side of the mount with the hooks on the top Horizontal Support.

5



6



7. Please refer to the instructions in the BB VESA mount for VESA mount assemble and please refer to the instructions in the DynamIQ/BalanceBox 400 series mount for adjusting the DynamIQ mount. See UM-1 Adaptor and CSB Mount Instructions if using cart with Cisco boards

AVTEQ
END USER GUIDE
DynamiQ RPS-500



[AVTEQ DynamiQ RPS-500 Height Adjustable Mobile Display](#) [pdf] Instructions
DynamiQ RPS-500 Height Adjustable Mobile Display, DynamiQ RPS-500, Height Adjustable Mobile Display, Adjustable Mobile Display, Mobile Display, Display

References

- [AVTEQ | Collaborative AV Furniture Designed for Today's Technology](#)

Manuals+.