



# avide SMART SERIES Smart RGB+W LED with WIFI User Manual

[Home](#) » [Avide](#) » avide SMART SERIES Smart RGB+W LED with WIFI User Manual 

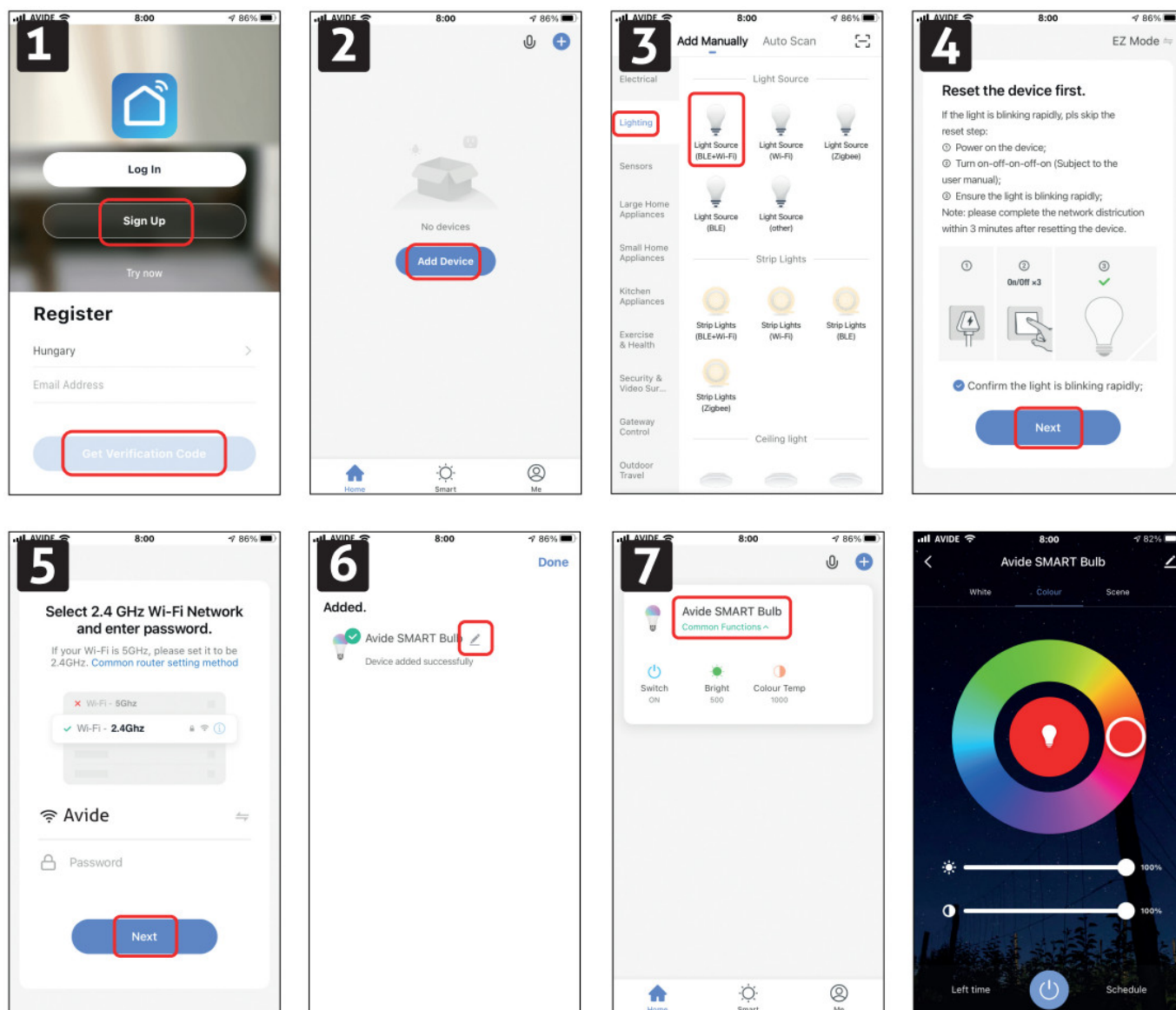


## Contents

- [1 General information](#)
- [2 Documents / Resources](#)

## General information

- Operating Temperature: -5 – 40°C
- This lamp is not suitable for use in dimmable circuits.
- Indoor use only.
- Use only in dry locations.
- Keep away from fire.



Use your phone to scan the QR code and install the „Smart Life” application. Make sure your phone is connected to a WIFI network. Open the Smart Life application.

**P1**, Register an account in the APP (use your email address).

**P2**, Tap to „Add device”. Insert your Smart LED into a socket. To enter pairing mode, switch the Smart LED On and Off 3 times in 10 seconds and then the Smart LED will start blinking rapidly.

**P3**, Touch the „lighting” tab on the left and then the „lighting (Wi-Fi)” icon.

**P4**, Touch „Confirm light blinks rapidly” button.

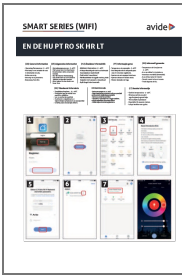
**P5**, Enter the Password of your WIFI network.

**P6**, Once you select Confirm after entering your password, the APP will start to pair the Smart LED to your device. If it is successfully done, you will see „window 6”. Here you can change the name of your LED. Tap „Done”.

**P7**, Choose the LED bulb from the list and the control panel appears. You can control the white color from 2700-6500K and the RGB color mode separately. Also, you can choose scenes on the top.

For technical or warranty support, please contact the authorised representative:

**Bramcke GmbH**  
52353 Düren  
An Gut Nazareth 18A  
Germany  
[www.bramcke.de](http://www.bramcke.de)



[avide SMART SERIES Smart RGB+W LED with WIFI](#) [pdf] User Manual  
SMART SERIES Smart RGB W LED with WIFI, SMART SERIES, Smart RGB W LED with WIFI  
, RGB W LED with WIFI, LED with WIFI, WIFI