



AVer DL 10 Ceiling Speaker, Installation Guide

[Home](#) » [AVer](#) » AVer DL 10 Ceiling Speaker, Installation Guide 

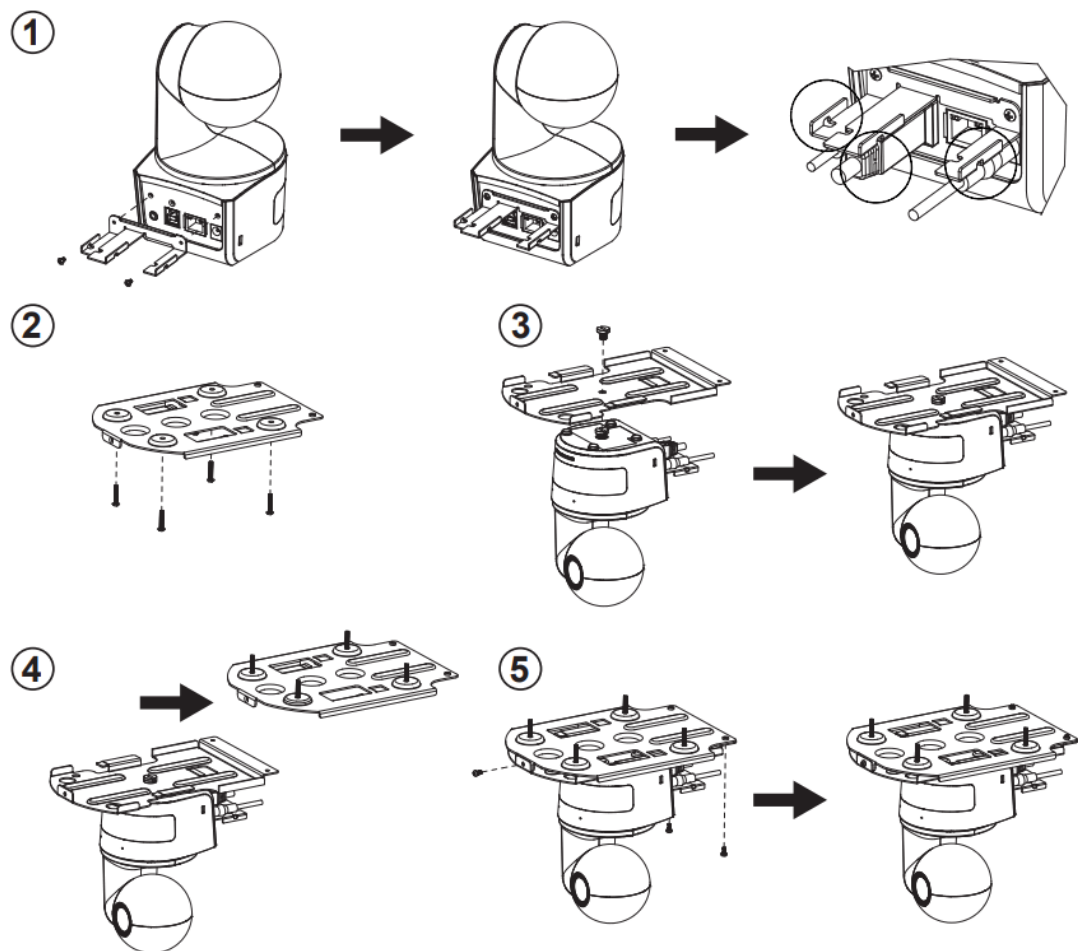


Contents

- [1 Ceiling Mount Quick Installation Guide](#)
- [2 Documents / Resources](#)
- [3 Related Posts](#)

Ceiling Mount Quick Installation Guide

1. Use two M2 x 4mm screws (in the DL camera package) to secure the cable fixing plate (in the DL camera package) to the camera. Plug in cables. Use 3 cable ties (in the DL camera package) to secure the cables and cable fixing plate.
2. Use four M4 (L≥10mm) screws (not supplied) to secure the mount bracket on the ceiling.
3. Use the 1/4"-20, L=7.5mm screw (in the ceiling mount kit) to install another mount bracket on the camera.
4. Slide the mount bracket with the camera into the mount bracket secured on the ceiling.
5. Use three M3 x 6mm screws (in the ceiling mount kit) to secure the camera.

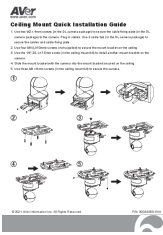


www.aver.com

© 2021 AVer Information Inc. All Rights Reserved.

P/N: 300AS900-EKA

Documents / Resources

	<p>AVer DL 10 Ceiling Speaker. [pdf] Installation Guide</p> <p>DL 10 Ceiling Speaker, DL 10, Ceiling Speaker, Speaker, DL 10 Ceiling Speaker</p>
---	--