

AVATTO WSH20 WiFi Temperature and Humidity Sensor



AVATTO WSH20 WiFi Temperature and Humidity Sensor User Manual

[Home](#) » [AVATTO](#) » AVATTO WSH20 WiFi Temperature and Humidity Sensor User Manual 

Contents

- 1 AVATTO WSH20 WiFi Temperature and Humidity Sensor
- 2 Product Usage Instructions
- 3 Specification
- 4 Product Description
- 5 Pair The Network
- 6 Display Brightness Adjustment
- 7 Temperature and Humidity Calibration
- 8 Clock Setting
- 9 Alarm Clock Setting
- 10 Countdown Timer Setting
- 11 Stop Watch Setting
- 12 App Download
- 13 FAQ
- 14 Documents / Resources
 - 14.1 References
- 15 Related Posts

AVATTO

AVATTO WSH20 WiFi Temperature and Humidity Sensor



Specifications

- Model Number: WSH20
- Input: WIFI
- WIFI frequency: 2.4G
- Temperature Measure Range: (specify range)
- Humidity Measure Range: (specify range)
- Temperature Measure Accuracy: (specify accuracy)
- Humidity Measure Accuracy: (specify accuracy)
- Dimensions: (specify dimensions)
- Net Weight: (specify weight)

Product Description

WSH20 is an advanced humidity and temperature sensor with a screen and special value adjustment method. It offers features such as temperature and humidity calibration, brightness adjustment, alarm clock, stopwatch, and more for a smart home experience.

Product Usage Instructions

Pairing The Network

1. Turn off the sensor by pressing the on/off button.
2. Long press the on/off button for 5 seconds until the wifi icon on the screen fast flashes.
3. Turn on Bluetooth on your phone and open the Smart Life/Tuya Smart app.
4. Click on the + icon in the app interface.
5. Select the product icon and press add.
6. Input your 2.4G wifi network and password to start pairing.
7. Once paired successfully, you can start using the sensor.

Specification

Model Number:	WHS20
Input:	5V 1V
WIFI frequency:	2.4GHz IEEE 802.11 b/g/n
Temperature Measure Range:	0°C~60°C
Humidity Measure Range:	0% RH~99%RH
Temperature Measure Accuracy:	± 1°C
Humidity Measure Accuracy:	±5%RH
Dimensions:	80 x 86 x 105 mm
Net Weight:	130g

Product Description

WSH20 is not just an excellent humidity and temperature sensor with screen and special value adjustment method. It have also enabled many revolutionary function like temperature&humidity calibration function, brightness adjustable function, alarm clock function, stop watch function etc. All work together to serve for a wonderful smart home life.

Rotable Value
Adjustment Frame

Week

Temperature

Humidity

Confirm Button

Option Button

Time

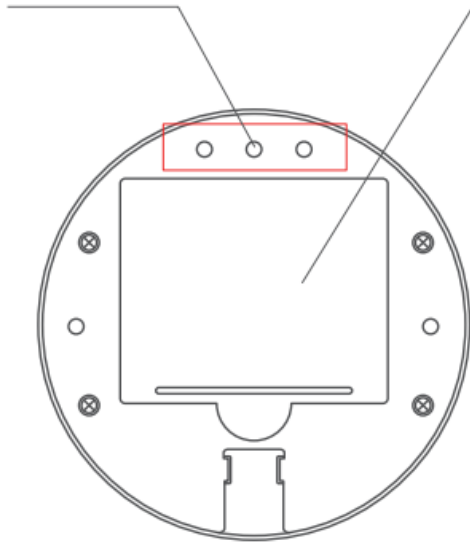
Date

Power Supply Stand

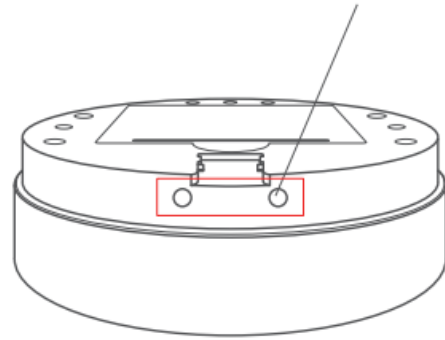
On/Off (Short Press)
C/°F Switch (Long Press)



Sensor Battery House Cover

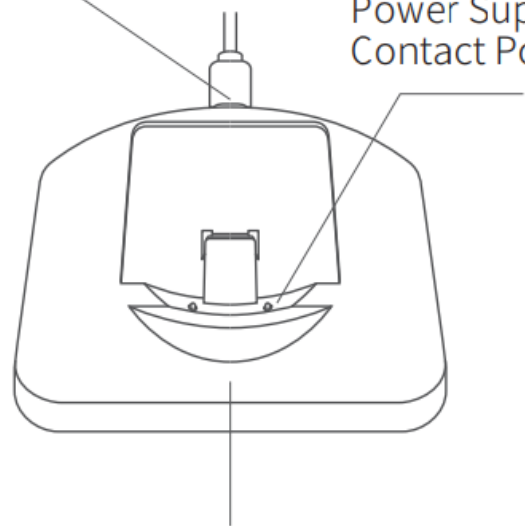
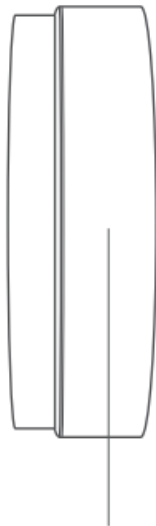


Power Supply Contact Point



Type- C
Power Supply Cable Port

Power Supply
Contact Point

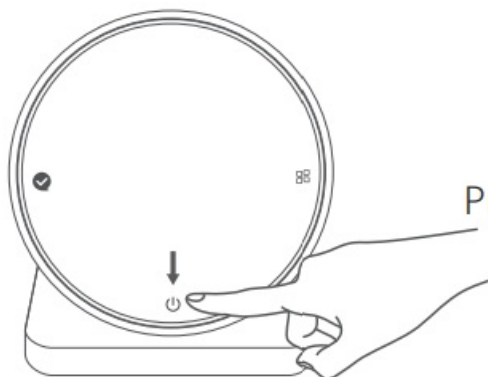


Rotable Value Adjustment Frame

Power Supply Stand

Pair The Network

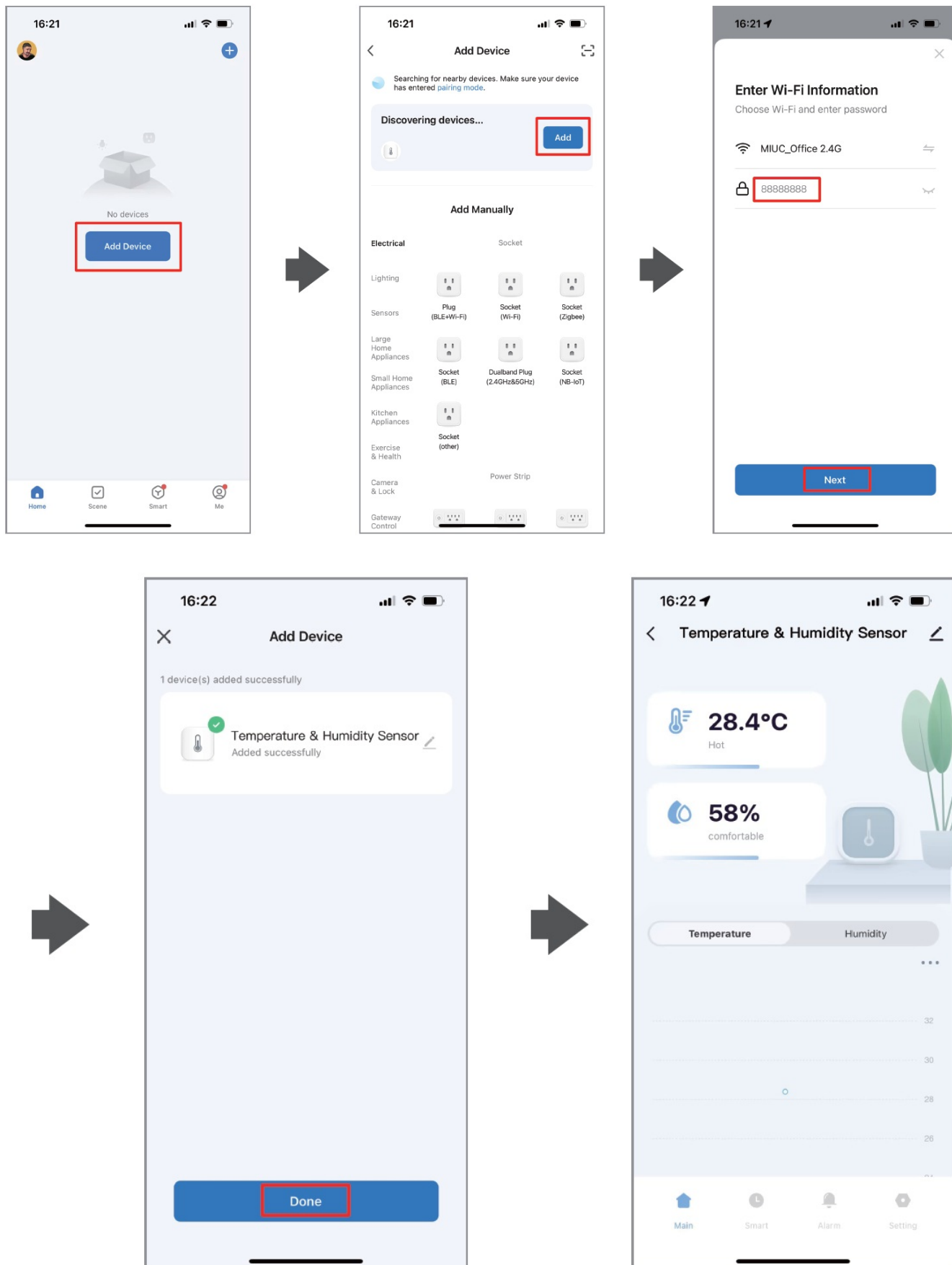
1. Turn off the humidity and temperature sensor via press the on/off button.
2. Long press the on/off button for 5 seconds till the wifi icon on the screen fast flash.



Press the button for 5s

3. Turn on bluetooth of phone, and open smart life / Tuya Smart APP on your phone .

4. Click + icon on the right up corner of the app main interface.
5. Product icon will jump out, press add.
6. Input 2.4G wifi network and pass word, start paring.
7. Paring successfully, and start your smart life.



Display Brightness Adjustment

Turn on and rotate the frame

left :
reduce the brightness

right :
increase the brightness



Temperature and Humidity Calibration

1. Short press the option key 1 time to adjust the temperature value.
2. Short press the option key 2 time to adjust the humidity value.
3. Rotate the increase or decrease the value .
4. Short press the confirm button to make confirmation.



Temperature Adjustment Accuracy: 0.1°C



Humidity Adjustment Accuracy: 1%RH

Clock Setting

1. Short press the option key 3 time to adjust the hour.
2. Short press the option key 4 time to adjust minute.
3. Short press the option key 5 time to adjust year.
4. Short press the option key 6 time to adjust month.
5. Short press the option key 7 time to adjust day.

6. Rotate to adjust the value.
7. Short press confirm key to make confirmation.

Alarm Clock Setting

1. Short press the option key 8 time to setting alarm clock.
2. Rotate to adjust time of alarm and turn on/off clock . (In Total 2 clock for option)

Countdown Timer Setting

1. Long press confirmation key get into Stop Watch function. Short press option key to choose between hour, minute and second.
2. Rotate to adjust the value
3. Short press confirm key to confirmation.
4. After alarm time reached, device will release voice of beep.

Stop Watch Setting

1. Long press option button key get into stop watch function.
2. Short press confirm key to start the timer.
3. Short press confirm key to stop the timer.

App Download

Scan the QR code to download Tuya Smart APP/ Smart Life App, or you can also search keyword “Tuya Smart” and “Smart Life” at App IOS APP /Android APP Store or Google play to download App.



Scan to download the Tuya Smart APP/ Smart Life App

FAQ


How do I adjust the display brightness?

To adjust display brightness, turn on the sensor and rotate the frame. Rotate left to reduce brightness and right to increase it.

How do I set the temperature and humidity calibration?

To calibrate the temperature, press the option key once and adjust the value. For humidity, press the option key twice. Rotate to increase or decrease the value and press the confirm button to confirm.

Documents / Resources

	AVATTO WSH20 WiFi Temperature and Humidity Sensor [pdf] User Manual WSH20, WSH20 WiFi Temperature and Humidity Sensor, WiFi Temperature and Humidity Sensor, Temperature and Humidity Sensor, Humidity Sensor, Sensor
---	--

References

- [User Manual](#)

[Manuals+.](#) [Privacy Policy](#)

This website is an independent publication and is neither affiliated with nor endorsed by any of the trademark owners. The "Bluetooth®" word mark and logos are registered trademarks owned by Bluetooth SIG, Inc. The "Wi-Fi®" word mark and logos are registered trademarks owned by the Wi-Fi Alliance. Any use of these marks on this website does not imply any affiliation with or endorsement.