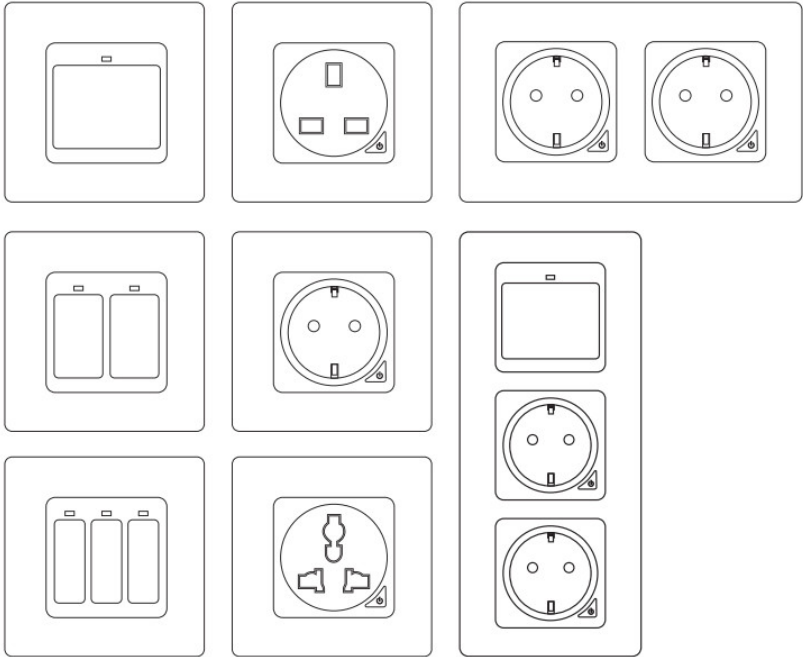




Avatto N-WOT10-EU WiFi Smart Switch Socket User Guide

[Home](#) » [AVATTO](#) » Avatto N-WOT10-EU WiFi Smart Switch Socket User Guide 



User Guide

Contents

- 1 WiFi Smart Switch
- 2 WiFi Smart Socket
- 3 Download and Install App
- 4 Control on App
- 5 Set Timer
- 6 Share Device
- 7 Manually reset the curtain switch
- 8 How to control device by Amazon Alexa
- 9 How to control device by Google Home
- 10 Documents / Resources

WiFi Smart Switch

Working Voltage: AC 110-240V (50/60Hz)

Normal Load Power: $\leq 800W$

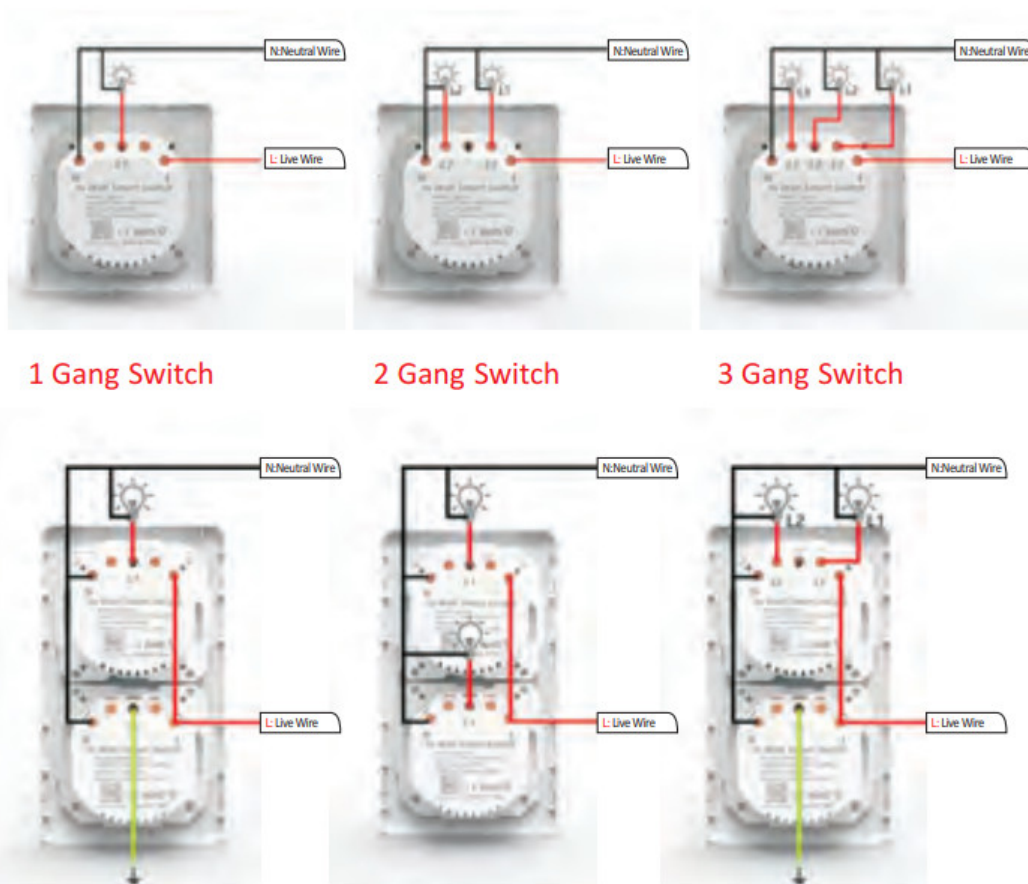
Maximum peak current: 10A

Maximum peak power: 1100W

Wireless Protocol: WiFi 2.4GHz

Wireless standard: IEEE802.11 b/g/n

1.1 Installation Guide

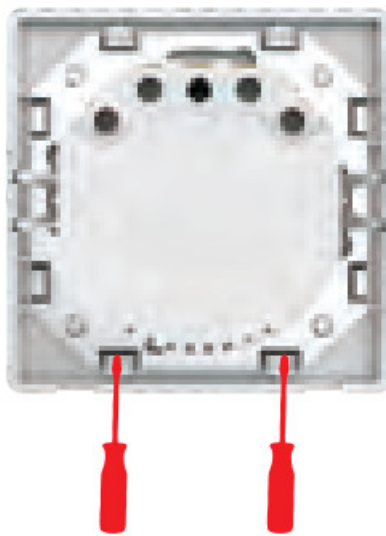


1.1.1 Installation Method



1.1.2 Touch switch installation method

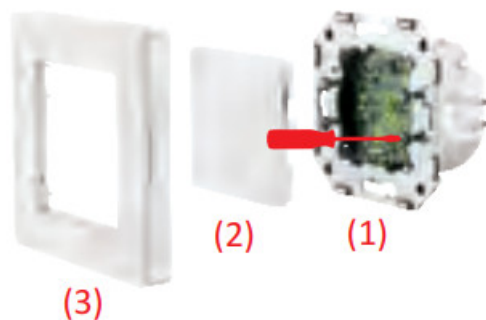
1. Insert the screwdriver and rotate 90 degrees to open the face frame



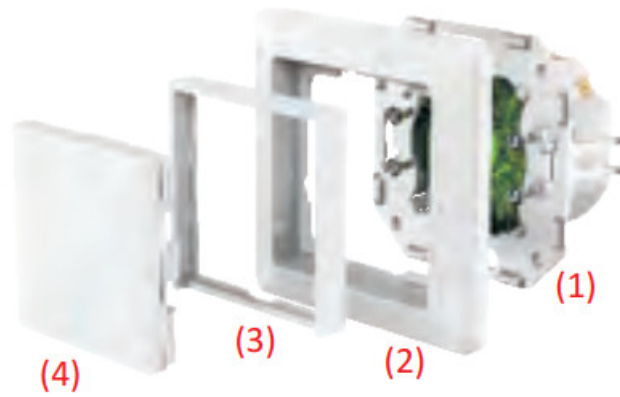
2. Insert the screwdriver to open the small panel



3. After connecting the wires, tighten the 4 screws and cover the No. 2.3 face frame at the same time



1.1.3 Modified installation method after touch switch



1. Tighten 4 screws to fix the back cover
2. The original traditional switch panel
3. Fill the box
4. Cover the small noodle frame and the installation is complete

1.2 Recovery reset status operation instructions:

1. Press the button for 20 seconds.
2. The signal indicator light will flash quickly or slowly

WiFi Smart Socket

Working Voltage: AC 110-240V (50/60Hz)

Normal Load Power: $\leq 3000W$

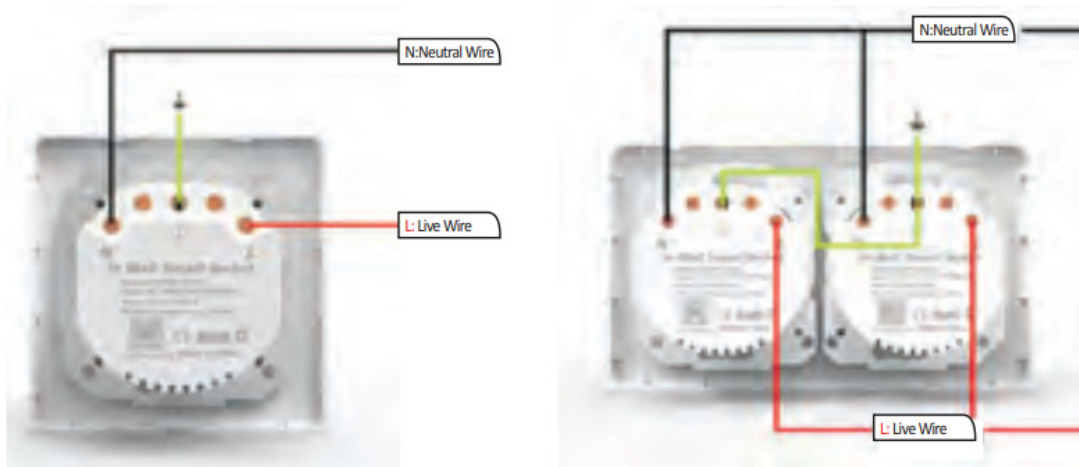
Output: 16A(Max)

Maximum peak power: 3600W

Wireless Protocol: WiFi 2.4GHz

Wireless standard: IEEE802.11 b/g/n

2.1 Installation Guide



2.1.1 Installation Method



2.1.2 Touch switch installation method and retrofit installation method Refer to 1.1.2 and 1.1.3 above

2.2 Recovery reset status operation instructions:

1. Press the button for 5 seconds.
2. the signal indicator light will flash quickly or slowly

Download and Install App

Use your phone to scan the QR code below or search" Smart Life "from Apple store or Google play to download the App.

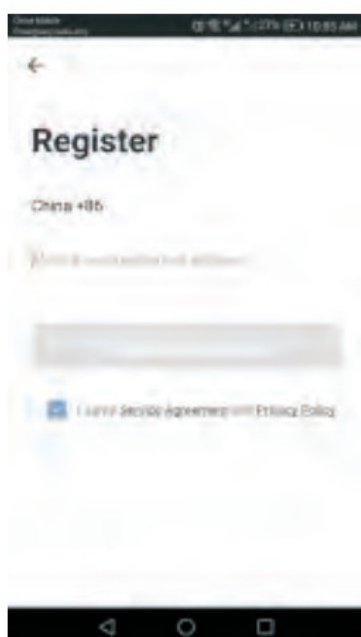


<http://smartapp.tuya.com/smartlife>

Input account name and password to log in.

If you don't have an account, please register an account first. System will identify your country automatically. You can use your mobile phone number or Email address as your account name.

Tap on "Next" to get a verification code via SMS on your mobile phone. Enter a desired password. Tap on "Confirm" to finish your registration.

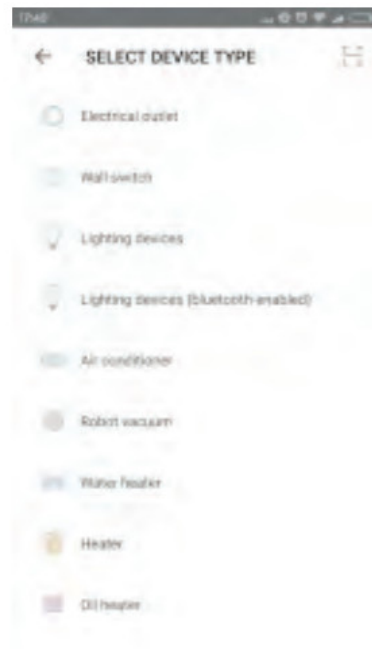
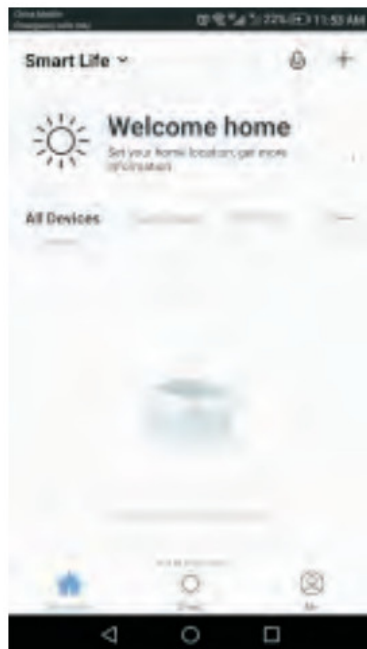


4.1 Add New WiFi Device

1. Connect your phone to local wifi first
2. Press the switch button for 20 seconds and till the lights flashes to reset.
3. On the Smart Life APP, tap on “+”in homepage Select “Wall Switch”
4. Input wifi password and confirm
5. Wait for successful configuration

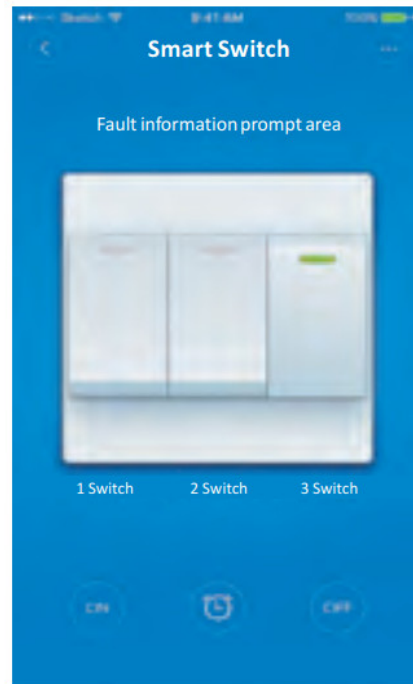
4.2 Add New ZigBee Device

1. Be sure to confirm that the device is in the fast flashing state
2. Open the Tuya ZigBee smart gateway
3. In the ZigBee smart gateway, click to add a sub-device
4. Discover the device and add it, the addition is successful



Control on App

After successful configuration, you can control wifi switch/socket on App. You can open/close the switch/socket.



Set Timer

You can set a schedule to open/close your switch/socket



Share Device

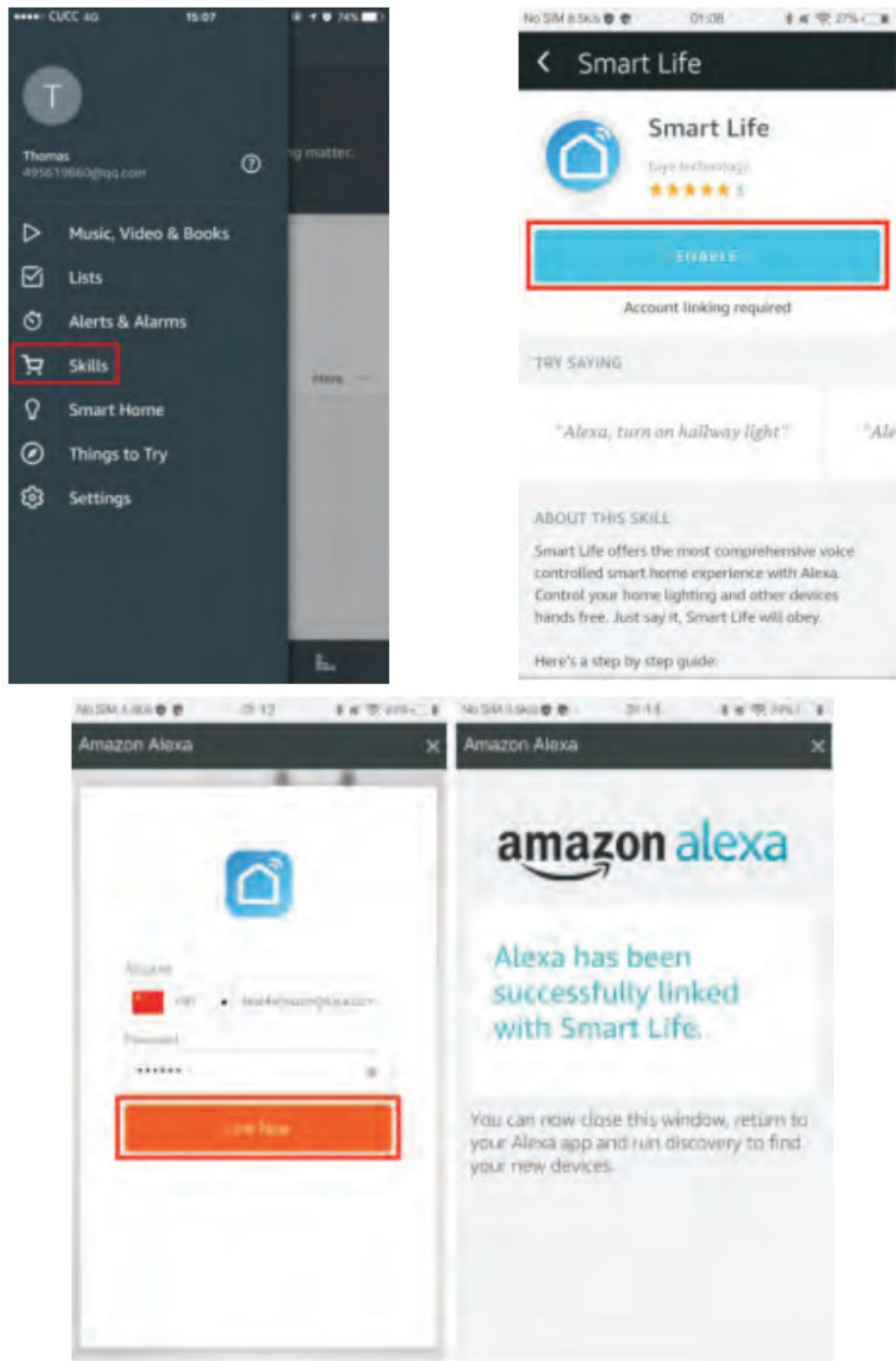
1. Select "Device Sharing" in Profile
2. Tap on "Add"
3. Input the cell phone number/email you want to share with
4. Device will automatically be listed in your shared account

Manually reset the curtain switch

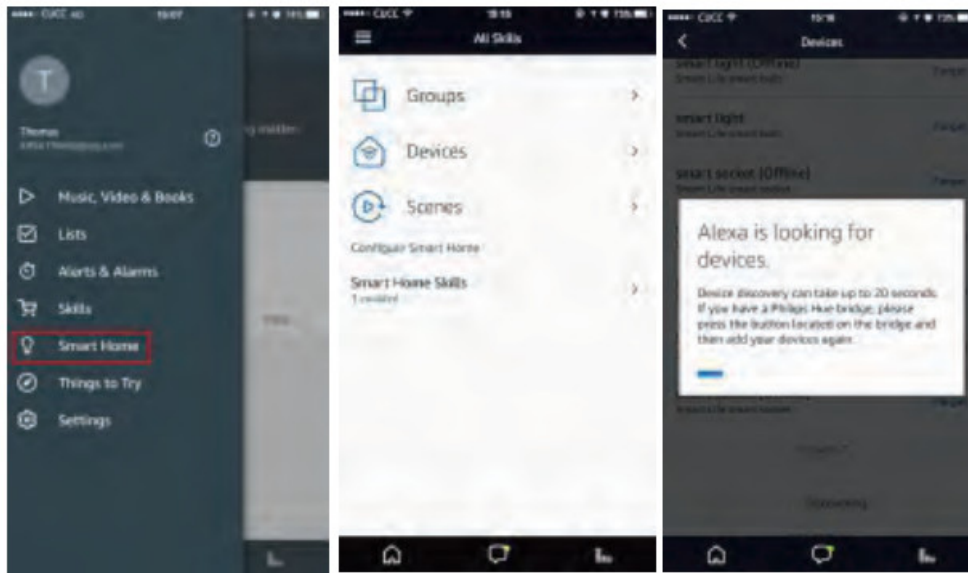
Repeat step 5 to reset the device

How to control device by Amazon Alexa

Open the “Amazon Alexa” APP. Go to “Home” and select “Skills”. Input “Smart Life” in the search bar. Tap on “Enable” to add the skill. Enter your “Smart Life” APP account name and password. Then tap on “Link Now” to continue. After the link succeeds, close the window and go back on the Alexa APP.



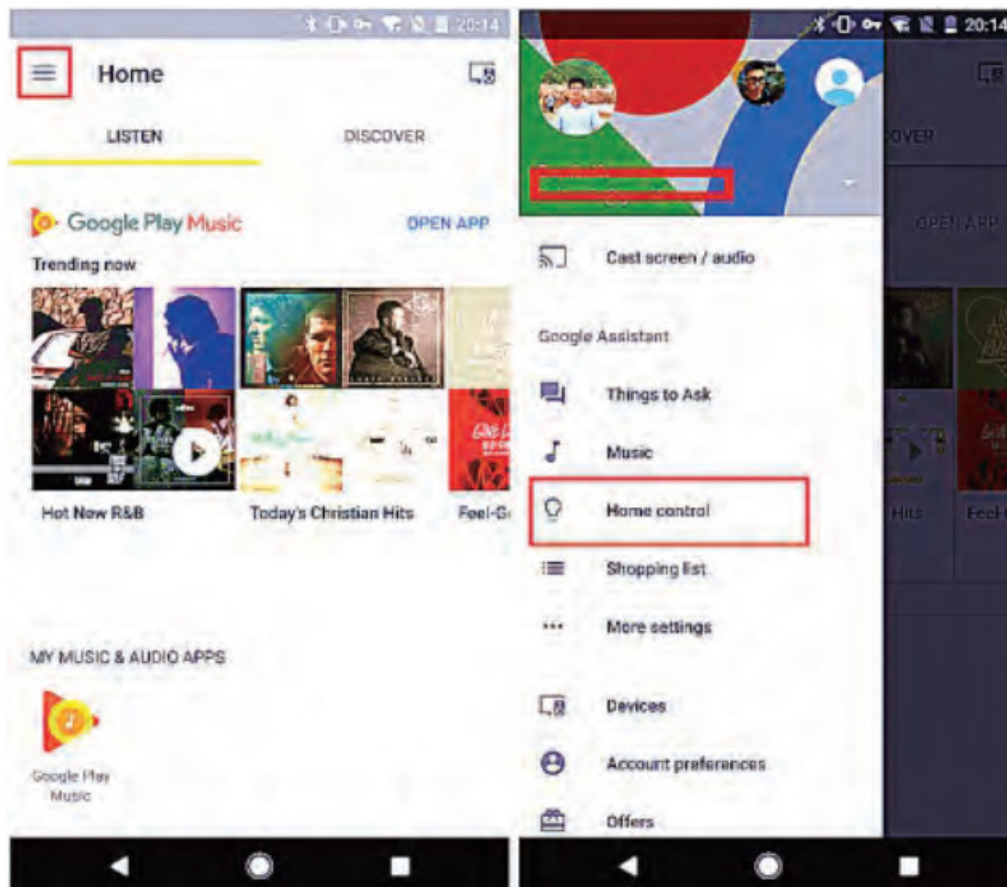
Tap on “Smart Home”, select “Devices” and then tap on “Discover”. Alexa will discover devices. After about 20 seconds, the devices will show in the list.



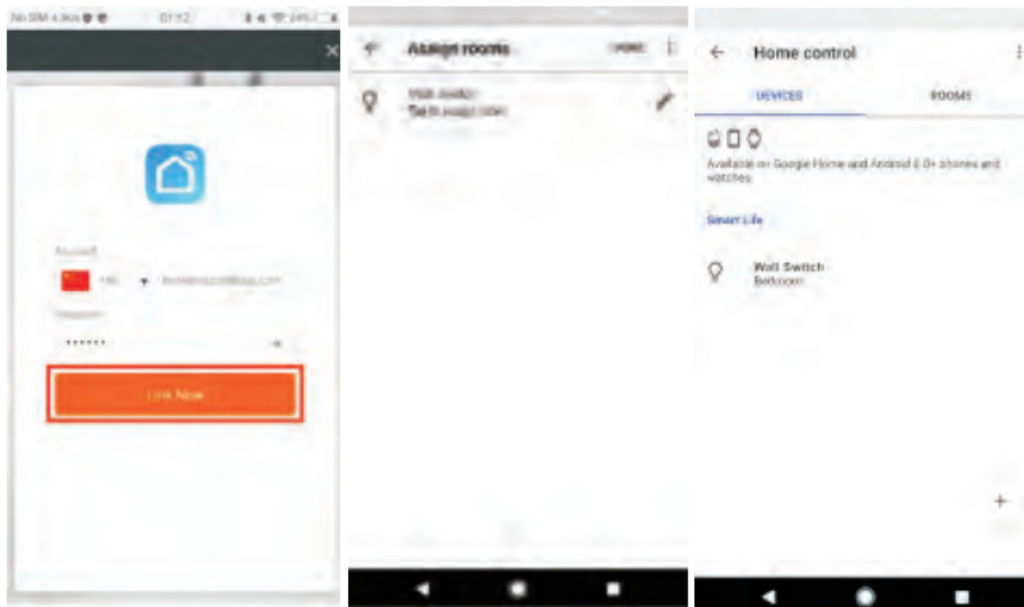
Now you can use your Alexa to voice control your Smart devices. “Alexa, turn on/off bedroom switch/socket.”

How to control device by Google Home

Open the “Google Home” or “Google Assistant” APP. Go to “Home” and select “Home Control”. Tap on “+” on the lower right corner to add skill. You can find “Smart Life” in “Add devices” list.




Select your country code. Enter your “Smart Life” APP account name and password. Then tap on “Link Now” to continue. After the link succeeds, you can assign rooms for your smart devices. Later you can find the smart devices in the Home Control list.



Now you can use your Google Home to voice control your Smart devices.
 “Ok, Google, turn on/off bedroom switch/socket .”.



Documents / Resources

	Avatto N-WOT10-EU WiFi Smart Switch Socket [pdf] User Guide N-WOT10-EU, N-WOT10-EU WiFi Smart Switch Socket, WiFi Smart Switch Socket, Smart Switch Socket, Switch Socket, Socket, N-WOT10-EU-B
---	--