



AVATTO GW16 Multi Mode Wireless Gateway User Manual

[Home](#) » [AVATTO](#) » AVATTO GW16 Multi Mode Wireless Gateway User Manual 

AVATTO GW16 Multi Mode Wireless Gateway



Contents

- [1 Product specifications](#)
- [2 Packing list](#)
- [3 Product description](#)
- [4 Preparation for use](#)
- [5 Network access settings](#)
- [6 Non-warranty regulations](#)
- [7 Documents / Resources](#)
 - [7.1 References](#)
- [8 Related Posts](#)

Product specifications

Product name	Multi-mode wireless gateway
Product number	GW16
Power input	DC 5V 1A
Operating temperature	-20°C ~ 45°C
Working humidity	10%-90%RH (no condensation)
Connection method	Wi-Fi, Bluetooth BLE Zigbee Bluetooth Mesh (SIG)

Packing list

1. Smart gateway*1
2. USB power cord*1
3. Product manual *1

Product description

Status indicator light



Reset button

Power socket

Preparation for use

1. Connect your phone to WiFi



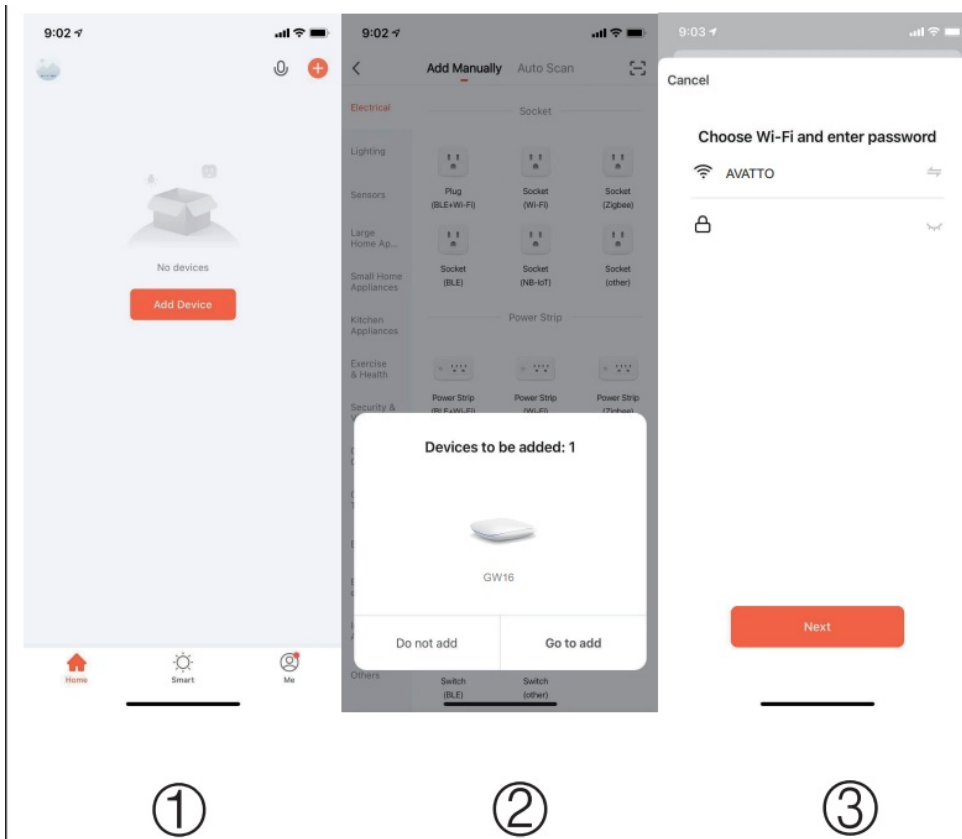
Ensure that the product is within the effective coverage of the WiFi network to ensure an effective connection between the product and the smart host (gateway)ZigBee network

1. Connect the gateway to the power supply then press and hold “reset “button for 5 seconds
2. Confirm the indicator light blinking (Switch between light blue and white color)
3. Download and open the APP Search for “Tuya Smart” in the application store or scan the QR code on the outer packaging/instructions to download and install the APP.

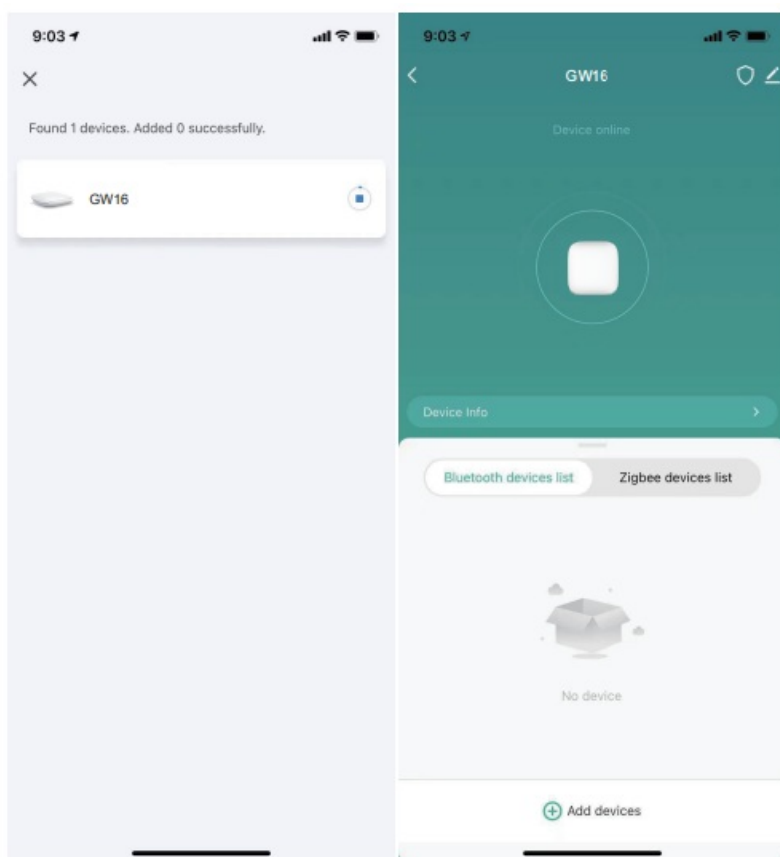


Network access settings

1. Open “Tuya Smart APP” and click Add Device
2. Automatically pop up “found equipment to be added: 1” and click “to add”
3. After entering the WIFI and password, click Next



4. Wait patiently for the device to be added
5. The multi-mode gateway is added successfully



④

⑤

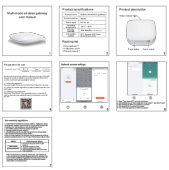
Non-warranty regulations

- a. Unauthorized maintenance, misuse, collision, negligence, abuse, liquid ingress, accident, incorrect use of non-converter accessories; or tearing up or altering labels or anti-counterfeiting marks;
- b. The validity period of the three packs has expired;
- c. Damage caused by force majeure;
- d. Circumstances that do not meet the performance failures listed in the “Product Performance Failure Table”;
- e. Due to human reasons, the converter and its accessories produce performance failures listed in the “Product Performance Failure Table”.

Name	Performance fa
Multi-mode wireless gateway	<ol style="list-style-type: none"> 1. The product cannot be turned on after Multi-mode power on 2. The status indicator is invalid 3. Unable to configure the network 4. Other hardware failures cause the function to be unavailable

Note: The illustrations of products, accessories, user interface, etc. in the manual are all schematic diagrams and are for reference only. Due to product updates and upgrades, the actual product shown on the product may be slightly different from the schematic diagram, please refer to the actual product.

Documents / Resources

	<p>AVATTO GW16 Multi Mode Wireless Gateway [pdf] User Manual</p> <p>GW16 Multi Mode Wireless Gateway, GW16, Multi Mode Wireless Gateway, Mode Wireless Gateway, Wireless Gateway, Gateway</p>
---	---

References

- [User Manual](#)

[Manuals+.](#) [Privacy Policy](#)

This website is an independent publication and is neither affiliated with nor endorsed by any of the trademark owners. The "Bluetooth®" word mark and logos are registered trademarks owned by Bluetooth SIG, Inc. The "Wi-Fi®" word mark and logos are registered trademarks owned by the Wi-Fi Alliance. Any use of these marks on this website does not imply any affiliation with or endorsement.