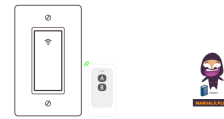


avatar CONTROLS Smart Light Switch With Remote



avatar CONTROLS Smart Light Switch With Remote User Manual

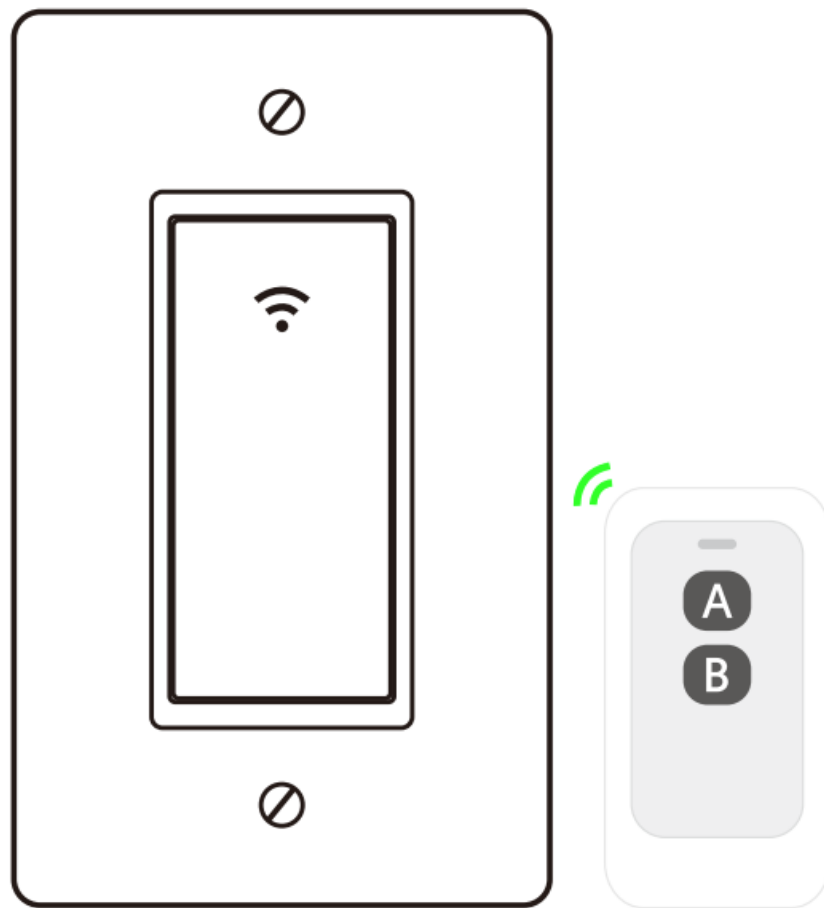
[Home](#) » [avatar CONTROLS](#) » avatar CONTROLS Smart Light Switch With Remote User Manual 

Contents

- [1 avatar CONTROLS Smart Light Switch With Remote](#)
- [2 Specifications](#)
- [3 Product Introduction](#)
- [4 Smart Light Switch Installation](#)
- [5 Install APP](#)
- [6 Add devices](#)
- [7 Control Your Smart Switch with Amazon Alexa/Google Assistant](#)
- [8 Troubleshooting and FAQ](#)
- [9 Documents / Resources](#)
 - [9.1 References](#)



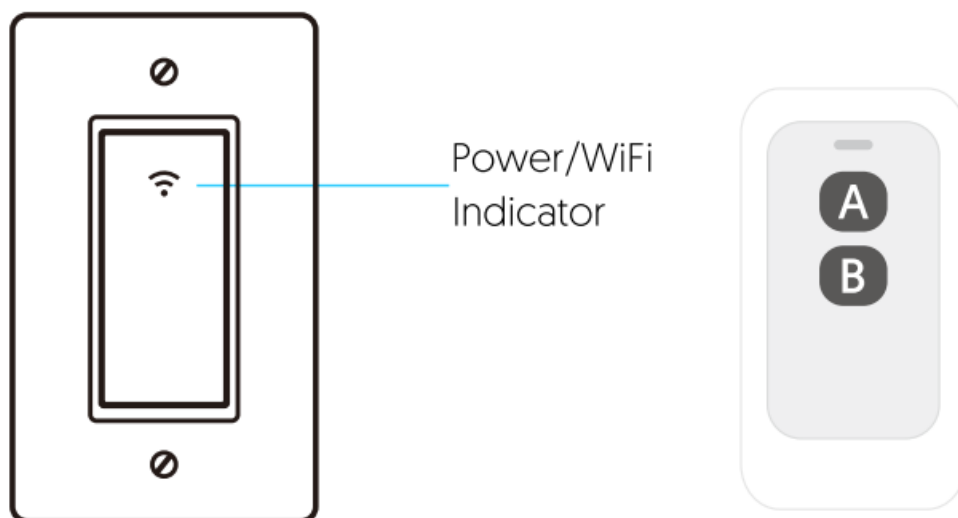
avatar CONTROLS Smart Light Switch With Remote



WORKS WITH



Specifications



Smart Light Switch

Remote Control

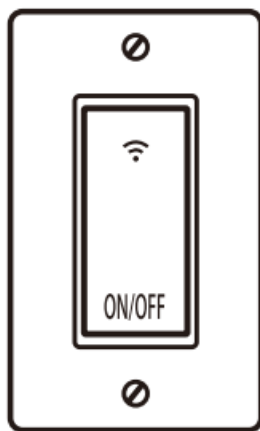
- **Model:** AWS06F
- **Input voltage:** AC 100-240V

- **Rated Frequency:** 50/60Hz
- **Max.Current:** 15A
- **Max.Power:** 800W
- **Remote Control:** Bluetooth
- **WiFi:** IEEE 802.11 b/g/n
- **Wireless standard :** Wi-Fi 2.4G

Product Introduction

The lighting fixture controlled by the Wi-Fi in-wall smart switch must not exceed 800 watts. The smart switch is designed only for single-pole use and Neutral Wire required.

Indicator description



Red light:

the state of the room light is on



Blue light:

the room light is off

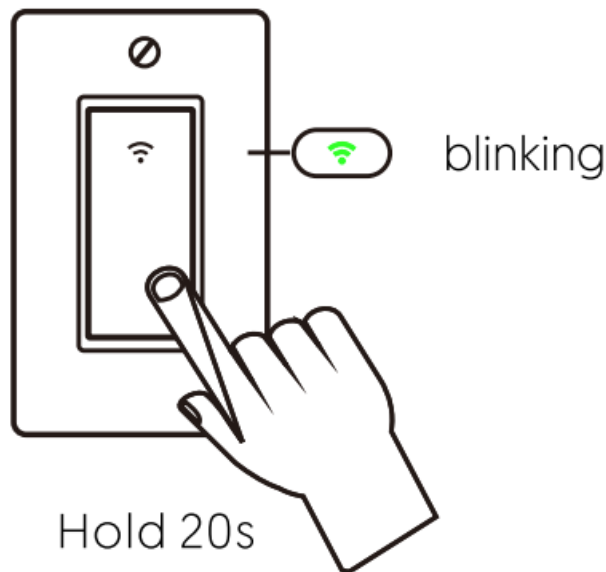


Green light:

Wi-Fi distribution network indicator

Method of restoring factory state

Press and hold the smart switch button for 20 seconds until the smart switch indicator is blinking.

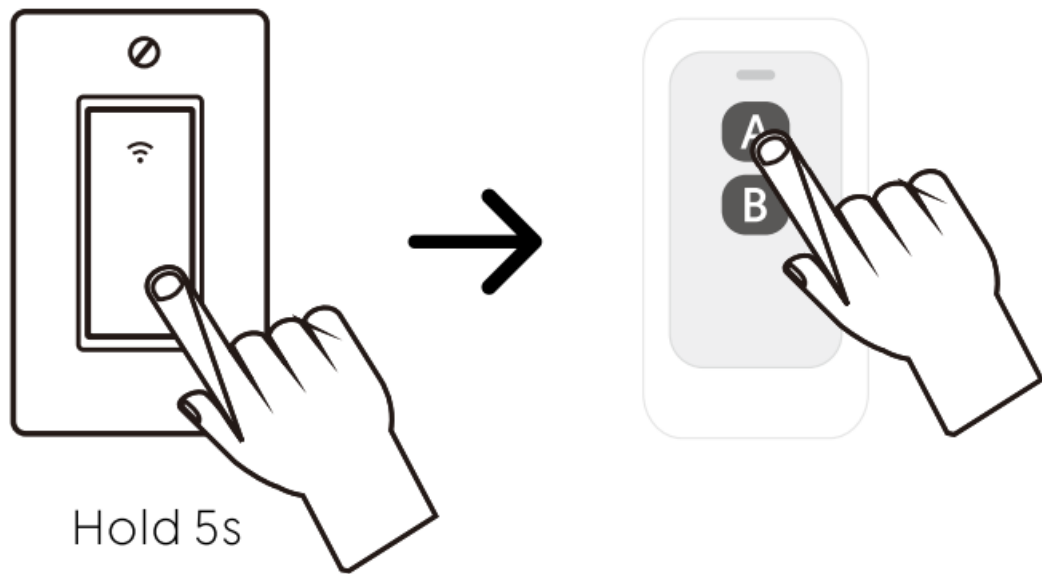


Remote pairing and deletion methods

One smart light switch can be paired with four remotes at most. One remote key can only control one smart light switch.

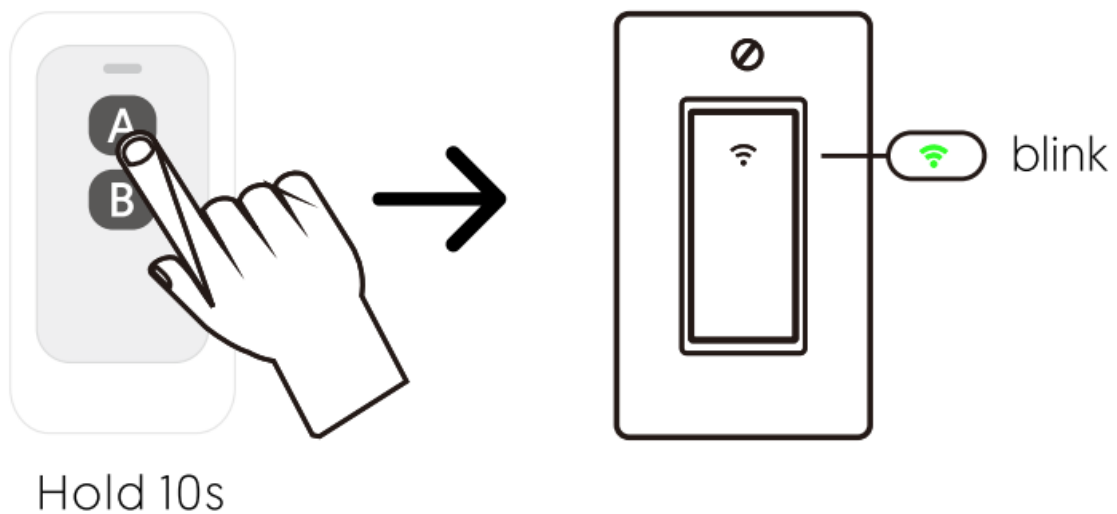
1. How to pair the remote with smart switch?:

- Step 1. Press and hold the smart switch button for 5 seconds until the switch indicator change to blinking slowly
- Step 2. Press and hold the remote key “A” or “B” until the smart switch indicator stop blinking, paired successfully.



2. How to delete the remote with smart switch?

Press and hold the remote key for 10 seconds until the smart switch indicator flashes rapidly for 2 seconds, release your finger, then the paired key is invalid now.



Smart Light Switch Installation

Tools you need



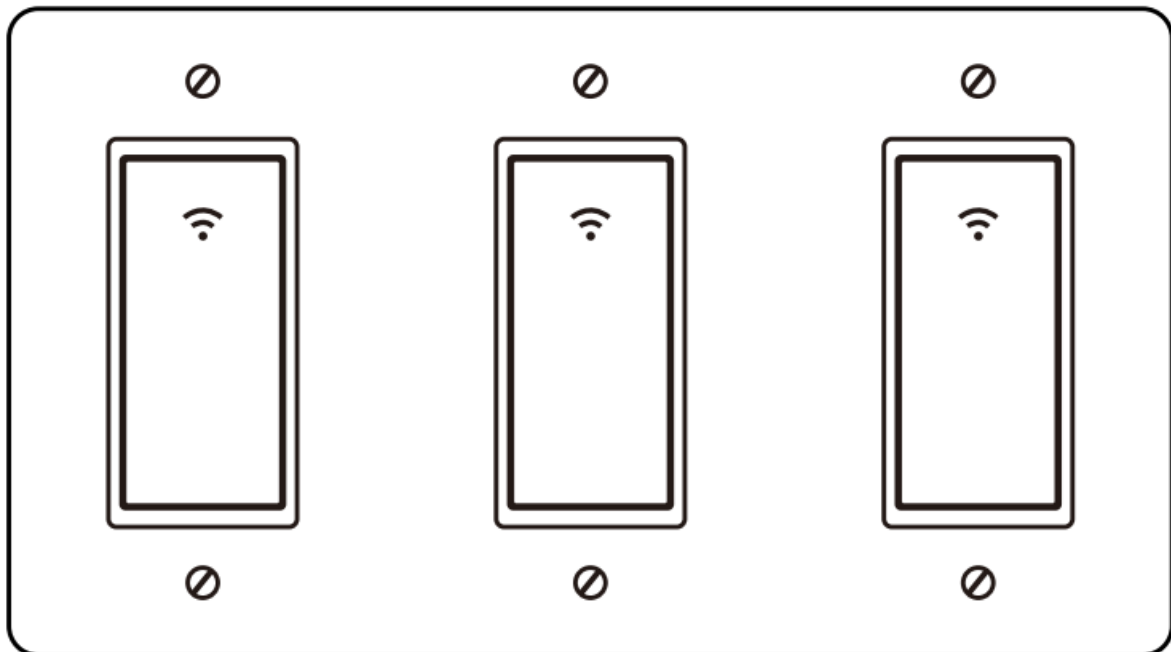
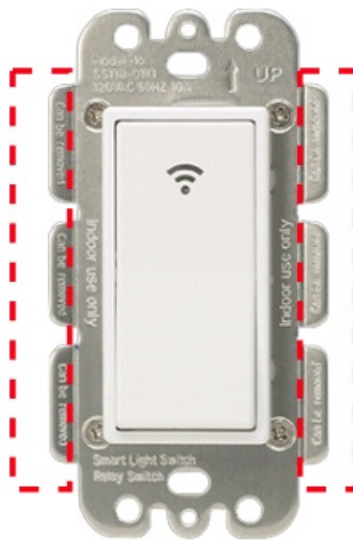
Screwdriver

Pliers

Electrical Tester

Combined 2gang, 3 gang Switches

The side angle of the sheet metal can be disassembled. 2gang or 3gang switches can be seamlessly connected together, which fully conforms to the size of the home switch box.



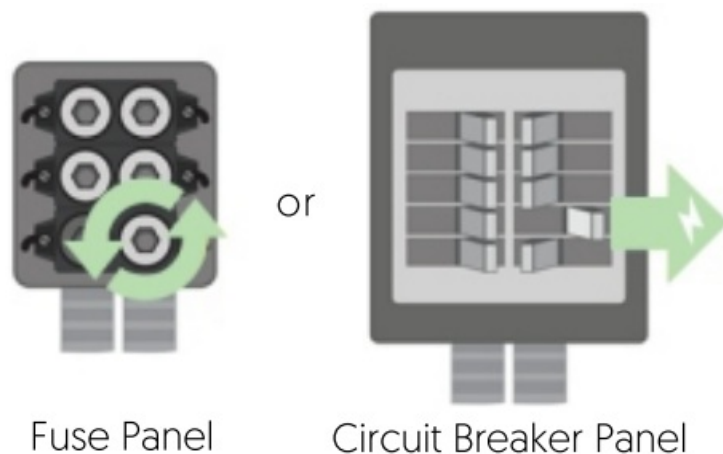
Physical Installation

Before you begin:

- The AvatarControls smart light switch can replace existing single-pole light switches, NOT 3-way.
- Make sure your home has a neutral wire in the wall where you want to install the smart light switch. If your house was built or remodeled before mid-80's, you may not have a neutral, please try another location or call an electrician for help.
- Check the Wi-Fi signal on your phone at the spot where you'll install the dimmer to make sure the Wi-Fi is strong. It only works on your 2.4 GHz wireless band.
- Keep your mobile device close to the smart light switch until setup is complete.
- The supported maximum wattage rating is: 800W.

Step 1: Turn the power OFF.

Shut OFF power to the light switch you are replacing at the circuit breaker or fuse box.

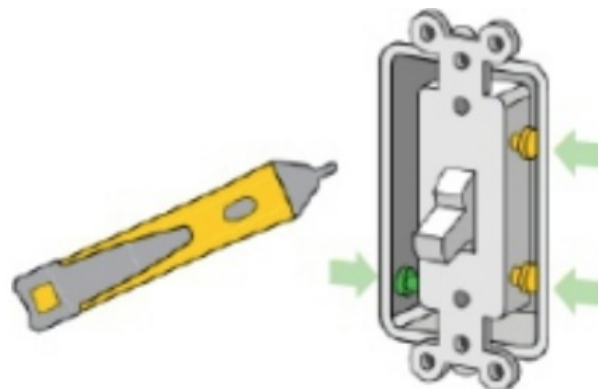


WARNING! Risk of electric shock!

Incorrect installation could be dangerous or illegal. Multiple breakers/fuses may need to be turned OFF for safe installation. Please call a professional electrician if you are unfamiliar or uncomfortable with electrical work.

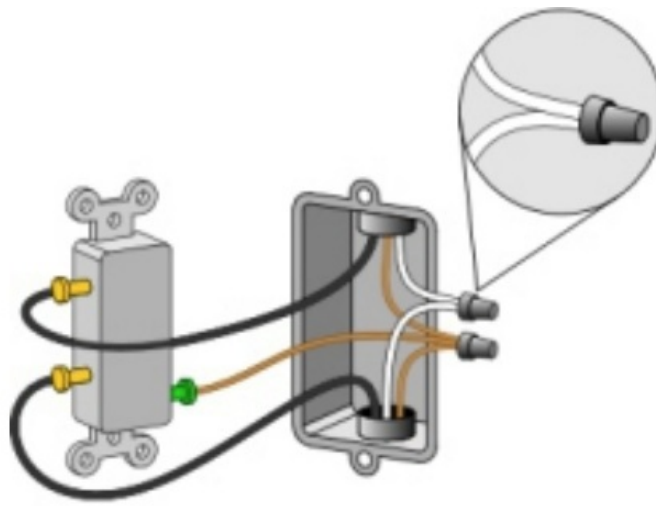
Confirm that the power is turned OFF

Remove the cover plate from the existing switch. Use a voltage tester to test BOTH sides of the switch. You may need to turn OFF more than one circuit breaker /fuse.



Step 2: Find the neutral wires.

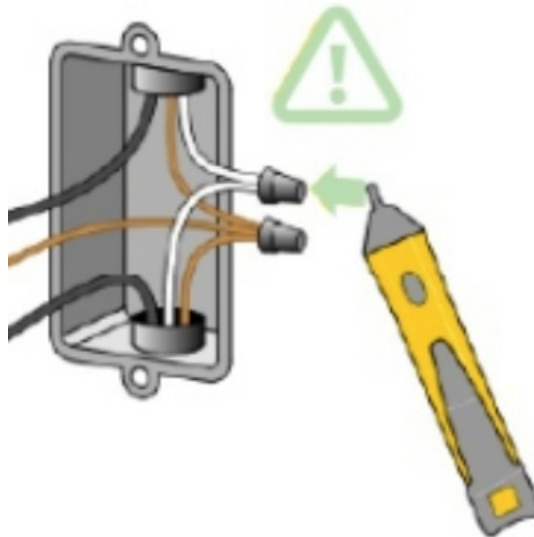
Unscrew the existing switch and gently pull it out of the wall. Look for the neutral wires, usually white. You need these to install the smart light switch. Continue ONLY if you have the neutral wires.



NOTE: You may have a different color and number of neutral wires than shown.

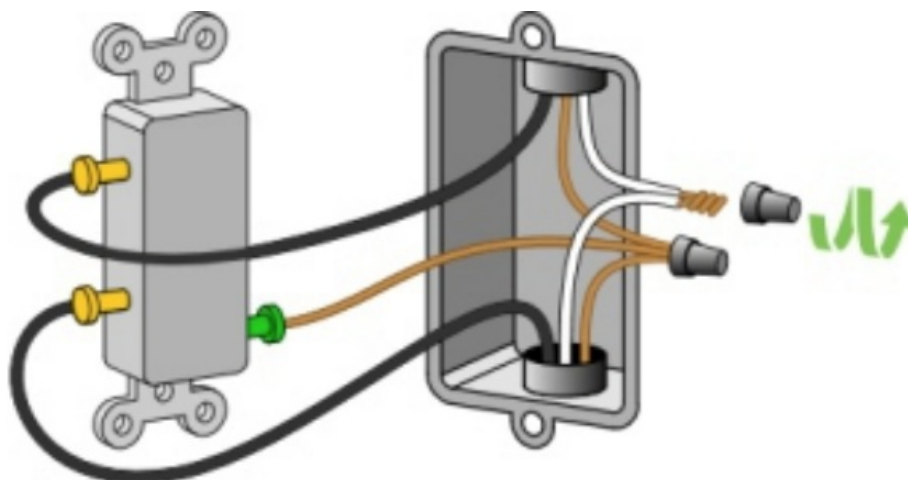
Test the neutral wires

Use a voltage tester to check that there is no power in the neutral wires from neighboring circuits. If necessary, shut OFF additional circuits until no voltage is found.



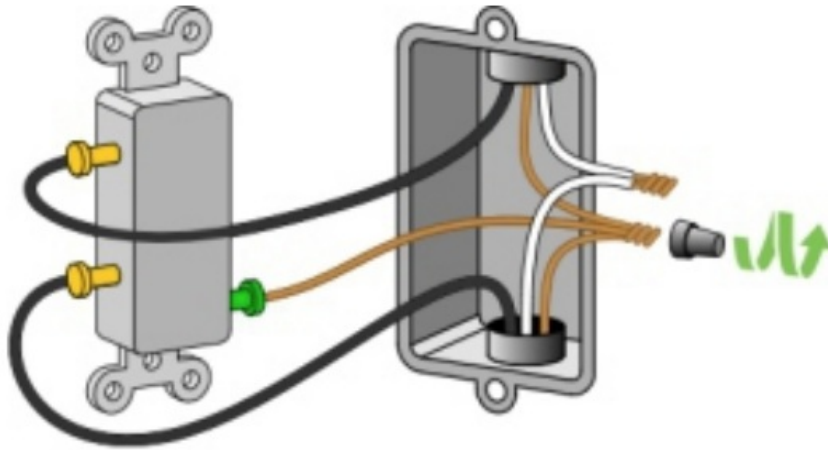
Disconnect the neutral wires

Unscrew the wire nut connecting the neutral wires.



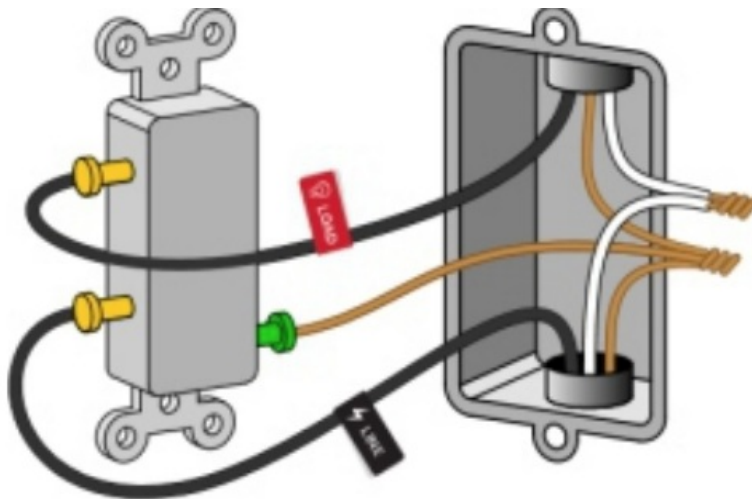
Step 3: Find the ground wires.

Look for the ground wires [usually green or solid copper] and unscrew the wire nut connecting them.



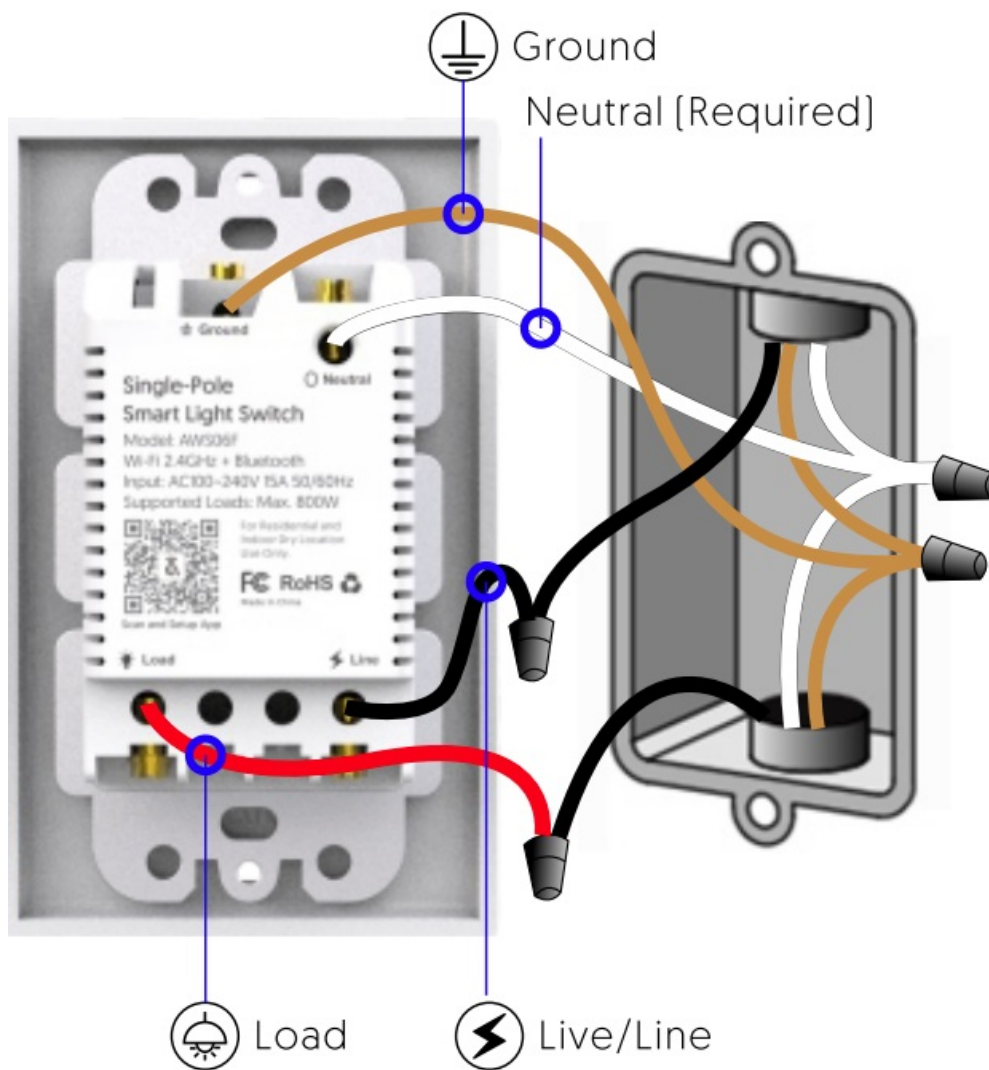
NOTE: You may have a different color and number of ground wires than shown.

Step 4: Find and label the line and load wires.



NOTE: Your existing wires may be in different locations than shown. Never label wires while the power is turned ON.

Step 5: Connect the Smart Light Switch wires.



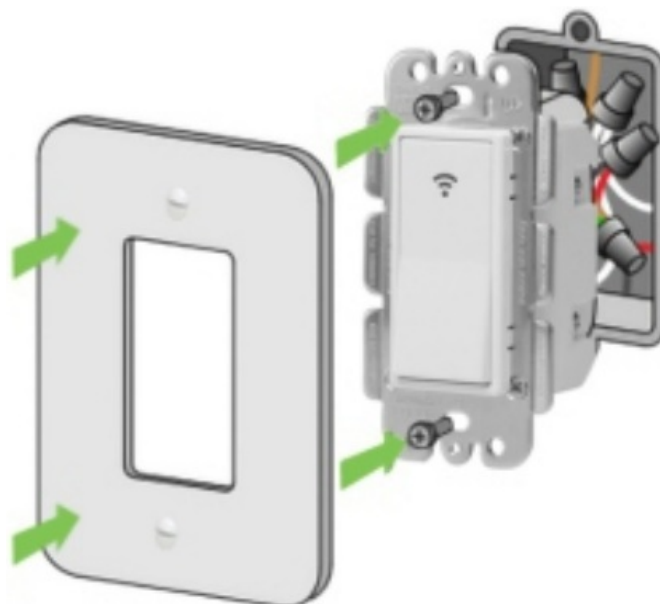
IMPORTANT: Make sure the power is turned OFF before you proceed. Your existing wires may have different colors than those shown.

Step 6: Install the Avatar switch into the wall.

Almost done! Tug on each wire nut to make sure they are secure on the wires.

Insert the Avatar switch into the box. It could get crowded in there.

Screw the Avatar switch into the wall and snap on the cover plate. Be careful not to over-tighten the screws.



Step 7: Turn ON the power.

Turn ON the power on your smart light switch at the fuse panel or circuit breaker panel.

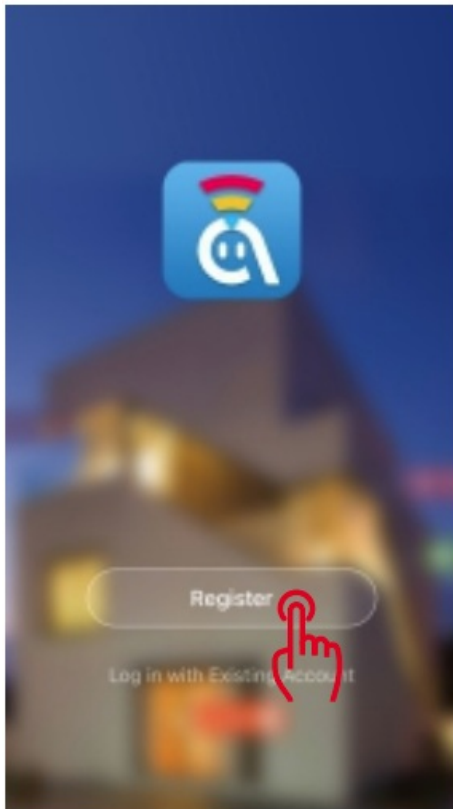
**Install APP**

Simplified steps to install the AvatarControls App on your smart device and pair with Amazon Alexa and Google Assistant using AvatarControls App on Apple Store or Google Play marketplace. Compatible with any smart phone or tablet including both Android and IOS systems.

Download AvatarControls App

Download AvatarControls from Apple Store or Google Play Store or scan the QR code below to install the Avatar Controls APP for either iOS or Android.

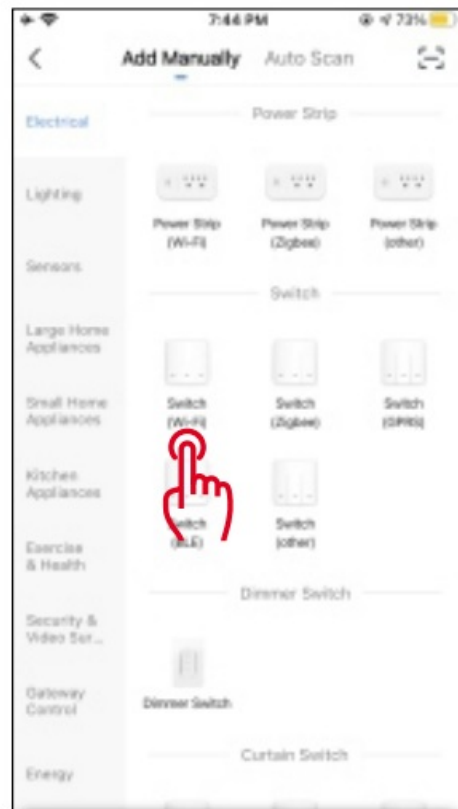
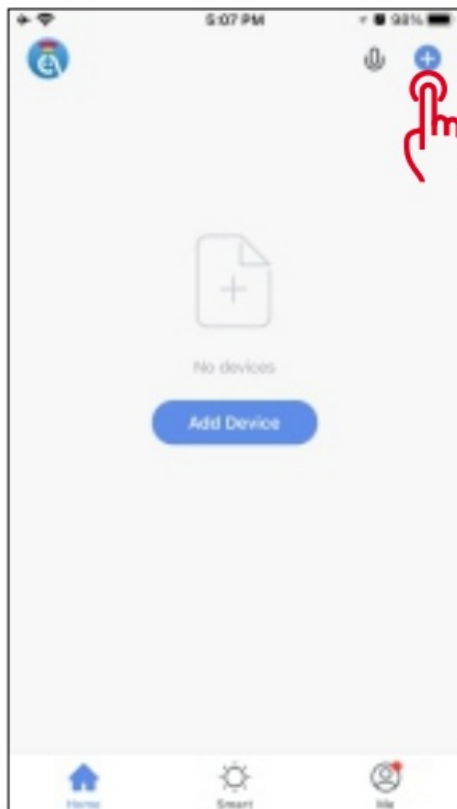
**Register an account in AvatarControls APP**


The image shows the registration page of the AvatarControls app. At the top, there is a back arrow icon on the left, the time '5:22 PM' in the center, and signal and battery status icons on the right. Below the back arrow is the title 'Register'. Underneath the title is a dropdown menu showing 'United States of America' with a right-pointing chevron. Below that is a text input field labeled 'Email Address'. Under the input field is a grey rounded rectangular button with the text 'Get Verification Code'. At the bottom, there is a checkbox followed by the text 'I Agree' and links for 'User Agreement' and 'Privacy Policy'.

- Open AvatarControls APP into account registration page.click on the “Register”
- At the registration page, select your region and enter the email to create a new account.[Phone number is not available]
- After successful registration, you can add device on your APP now.

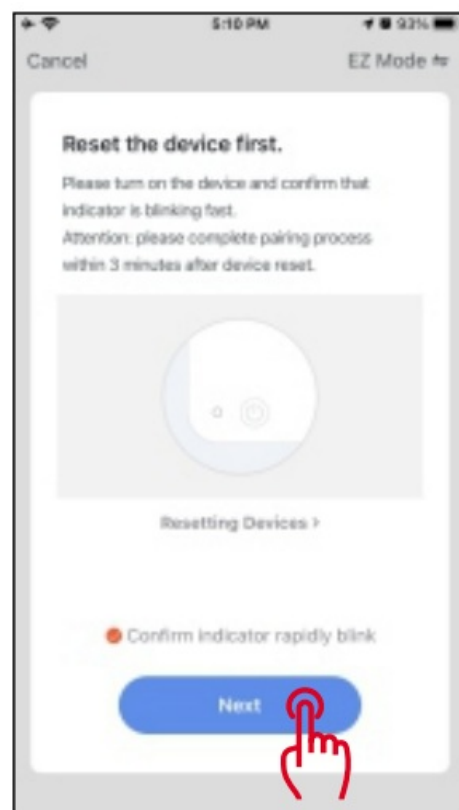
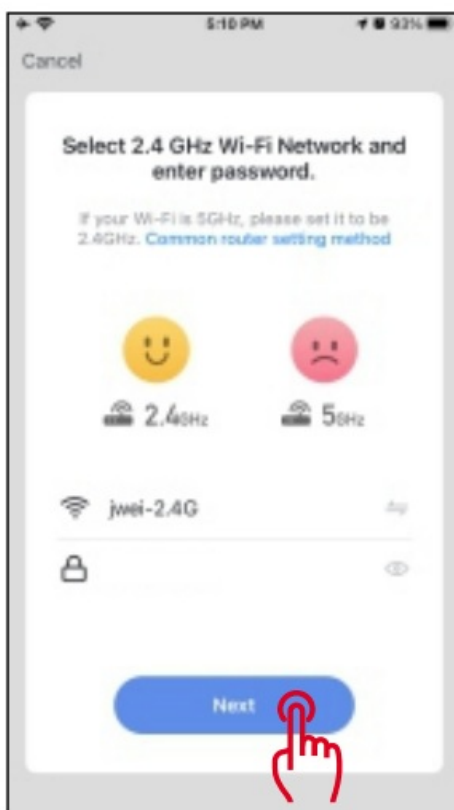
Add devices

Step I. After login to AvatarControls APP, click on + to add devices. Select “Electrical” -> “Switch” catagory, tap “Switch[Wi-Fi]” product icon.



Step 2. Select the Device Work Wi-Fi and enter the password, then start the configuration of the device. Follow the in-APP instruction to connect the Avatar remote switch to your Wi-Fi network.

- Please make sure the Wi-Fi is strong & 2.4 GHz wireless band.
- Keep your mobile device close to the Avatar remote switch until setup is completed.



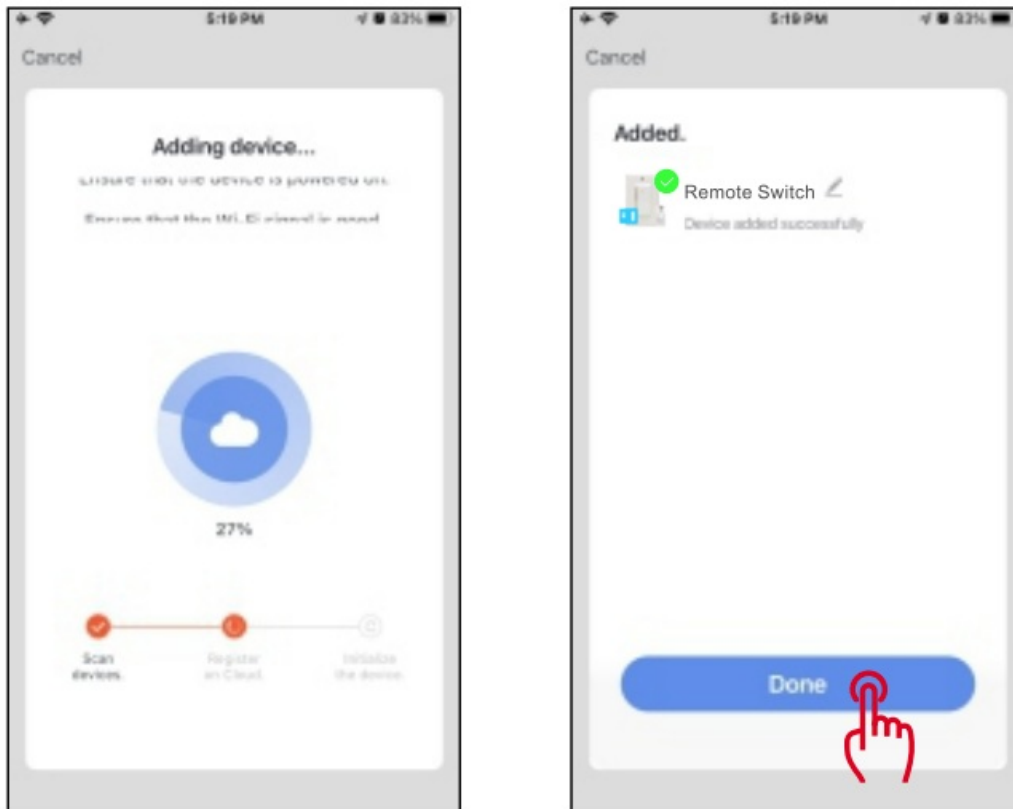
Step 3. Active the Avatar switch to Wi-Fi connection mode

AvatarControls APP supports two types of configuration modes: EZ mode and AP mode.

- **EZ mode:** Turn off the luminaire first. The switch indicator will be blue. Press and hold the switch button for 20 seconds and release. The indicator light will blink rapidly. [About twice per second] .
- **AP mode:** Under EZ mode. continue to press and hold the switch button for 20 seconds and release. the switch indicator will blink slowly. [About once 2 seconds].

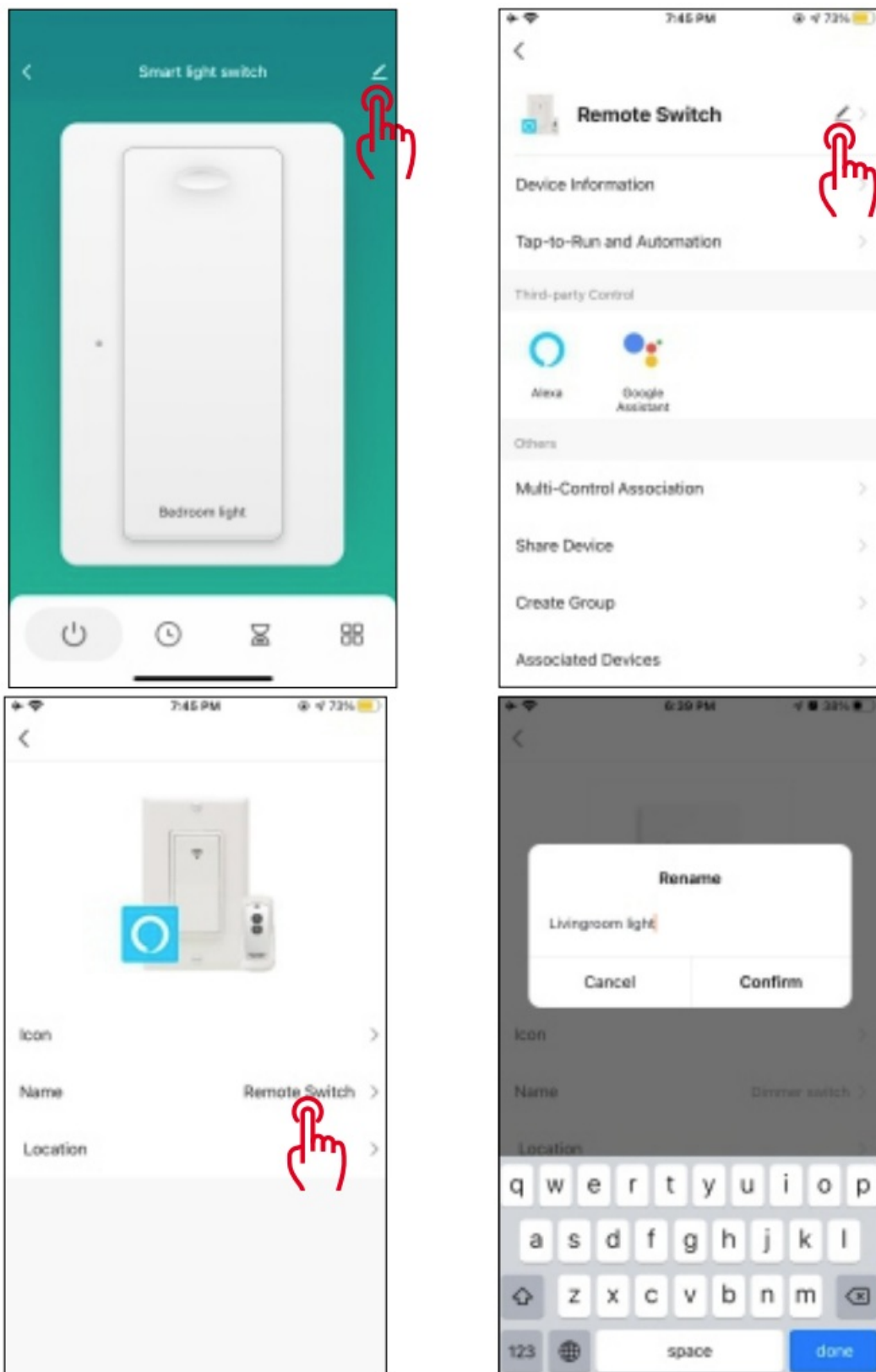
If the switch can not be paired in EZ mode [blink rapidly]. please change to AP mode [blink slowly]. After entering the “Add Device” page . confirm whether the Smart Light Switch is EZ mode.

Step 4. “Device added Successfully” will be displayed after a successful operation.



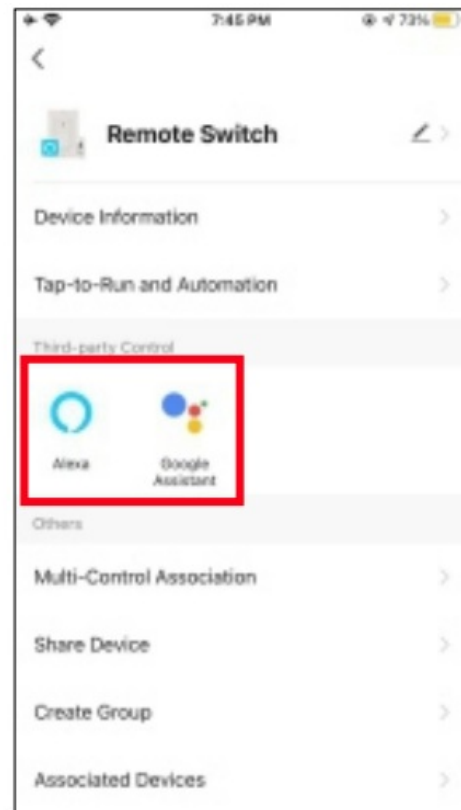
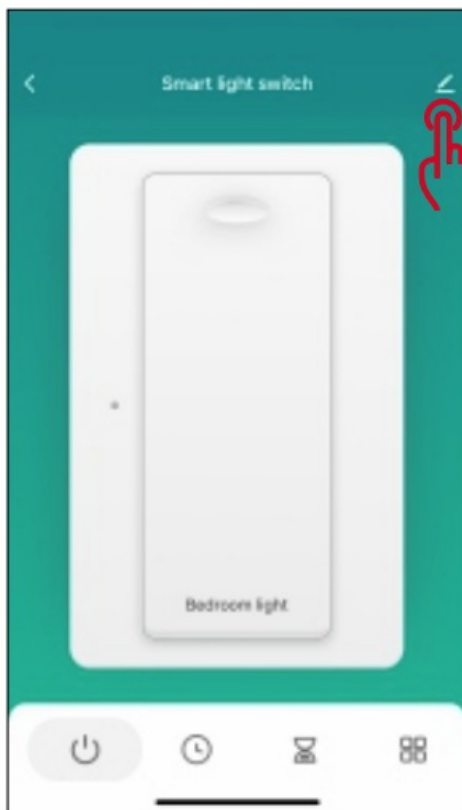
Rename the device

After the device be added successfully, click the device description text to modify device name. The name of the device is recommended to use easy pronunciation of the English words.



Control Your Smart Switch with Amazon Alexa/Google Assistant

1. Tap the edit menu of the smart light switch panel
2. Tap the 3rd-party control icon to be operated
3. Sign in with your Amazon Alexa or Google Home account.



Now you can use your voice to control the light:

- Alexa, tum on livingroom light
 - Alexa, tum ojflivingroom light
- or**
- Hey Google, tum on livingroom light
 - Hey Google, tum ojflivingroom light

Troubleshooting and FAQ

1. What should I do when I cannot turn smart light switch on or off?

- Make sure your mobile devices and the smart light switch are connected to the same Wi-Fi network.
- Make sure your smart light switch is power on.

2. What should I do when device configuration process has failed?

You could:

- Check whether the smart switch is powered on or not.
- Check whether your mobile device is connected to 2.4Ghz Wi-Fi network.
- Check your network connectivity. Make sure the router is working properly.
 - If the router is dual-band router, select 2.4G network and then add smart switch.
 - Enable the router's broadcasting function.
 - Configure the encryption method as WPA2-PSK and authorization type as AES. or set both as auto.
 - Check for Wi-Fi interference or relocate the smart dimmer switch to another location within the signal range.
 - Check whether the router's connected devices reach the amount limit. Please try to turn off some devices· Wi-Fi function and configure smart switch again.
 - Check if router's wireless MAC filtering function is enabled. Remove the device from filter list and make sure the router is not prohibiting smart switch from connection.
- Make sure the password of your Wi-Fi network entered in App is correct when adding smart switch.
- Make sure the smart switch is ready for App-Config: the indicator light is quick blinking (twice per second) for
 1. Quick mode configuration. slow blinking [once every 3 seconds] for AP mode configuration.
- Repeat the App-Config process.
- Reset the smart switch to default setting and try to add it again.

3. Can I control device through 2G/3G/4G cellular network?

The smart switch and the mobile device are required to be under the same Wi-Fi network when adding the smart switch for the first time. after successful device configuration, you can remotely control the device through 2G/3G/4G cellular network.

4. How can I share my device with family?

Open your App, go to "Home"-> tap your smart switch icon -> tap "edit menu" icon-> tap "Share Device"-> tap "Add sharing", fill your family account info then you can share the device with added family members.

Need Help?




Operating Videos



Service Online

Documents / Resources

	<p>avatar CONTROLS Smart Light Switch With Remote [pdf] User Manual</p> <p>Smart Light Switch With Remote, Smart, Light Switch With Remote, Switch With Remote, With Remote</p>
---	---

References

- [User Manual](#)

Manuals+, Privacy Policy

This website is an independent publication and is neither affiliated with nor endorsed by any of the trademark owners. The "Bluetooth®" word mark and logos are registered trademarks owned by Bluetooth SIG, Inc. The "Wi-Fi®" word mark and logos are registered trademarks owned by the Wi-Fi Alliance. Any use of these marks on this website does not imply any affiliation with or endorsement.