



avatar CONTROLS 30142264 Smart WiFi Plug User Manual

[Home](#) » [avatar CONTROLS](#) » avatar CONTROLS 30142264 Smart WiFi Plug User Manual 



Smart WiFi Plug
User Manual



WORKS WITH ,Google Assistant



WORKS WITH amazon alexa

Contents

- 1 Install APP & Add Device
- 2 – Operation guide –
- 3 How to work with Amazon Echo or Google Home?
- 4 Documents / Resources
 - 4.1 References

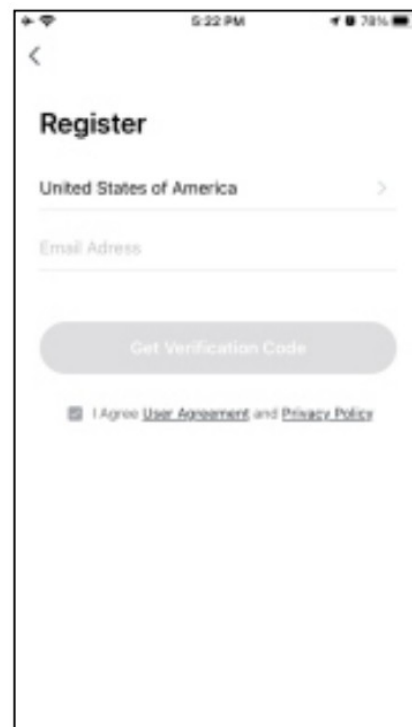
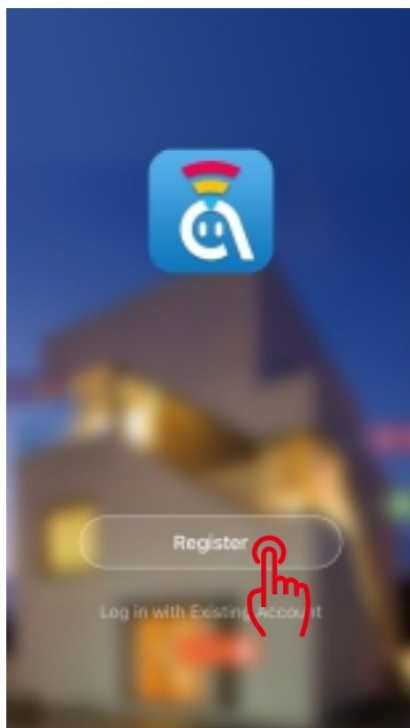
Install APP & Add Device

Step 1: Download the “AvatarControls” APP and keep your phone connected to 2.4G WiFi [5G is not supported].

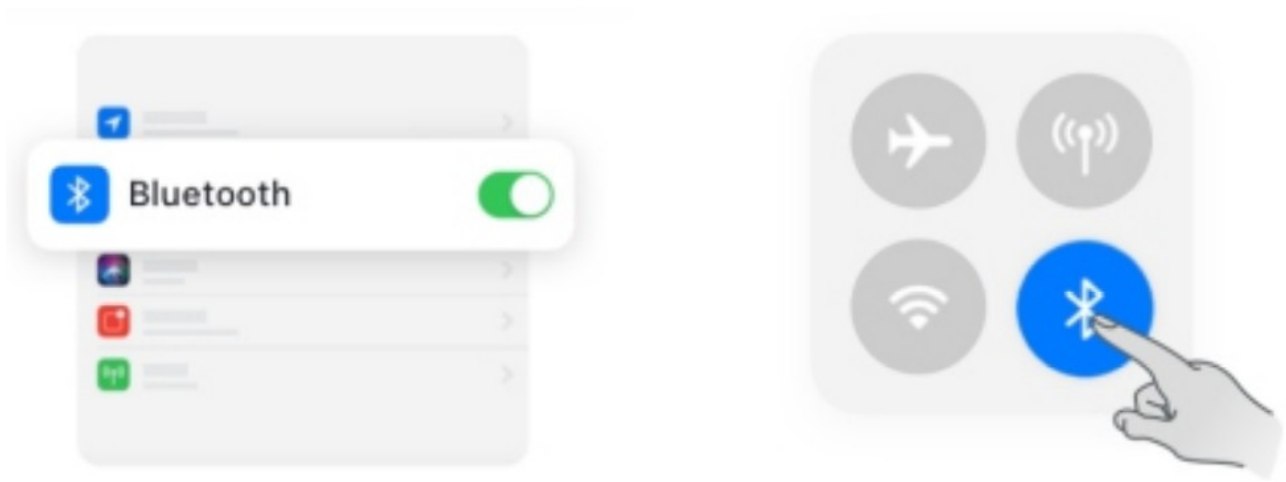


<https://www.youtube.com/channel/UCsGqB4lKW1NmZlK2mfBBaww>

Step 2: Register an account in AvatarControls APP



Step 3: Enable your smartphone's Bluetooth

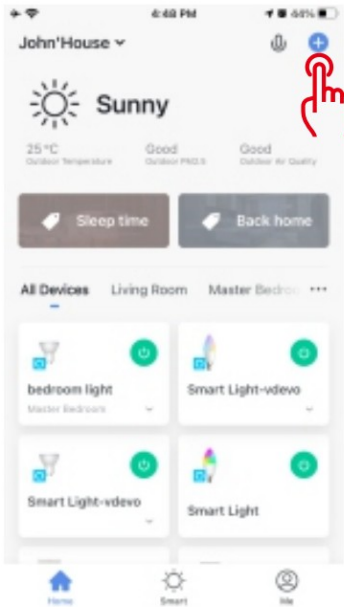
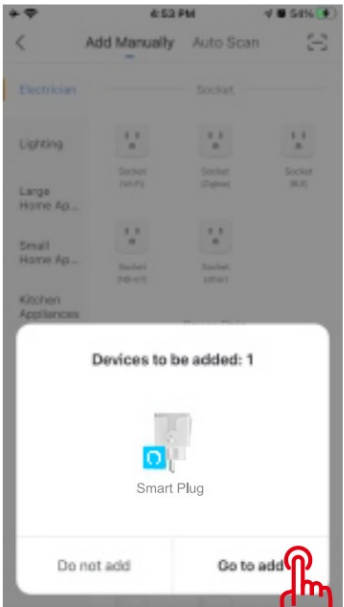
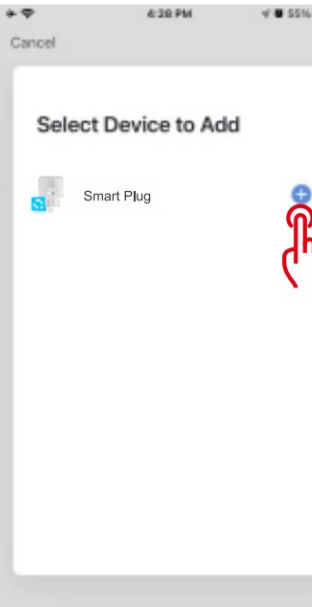

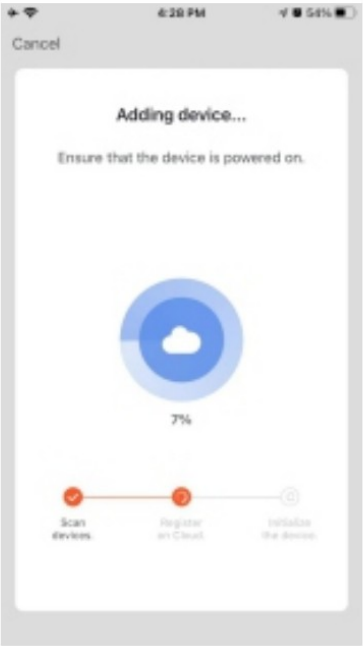
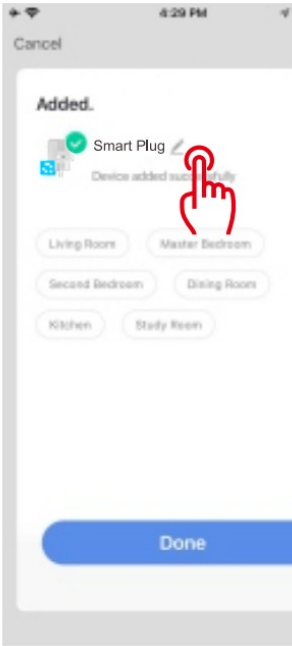


Step 4: Hold down the smart plug's power button 5 seconds until the LED indicator is blinking.

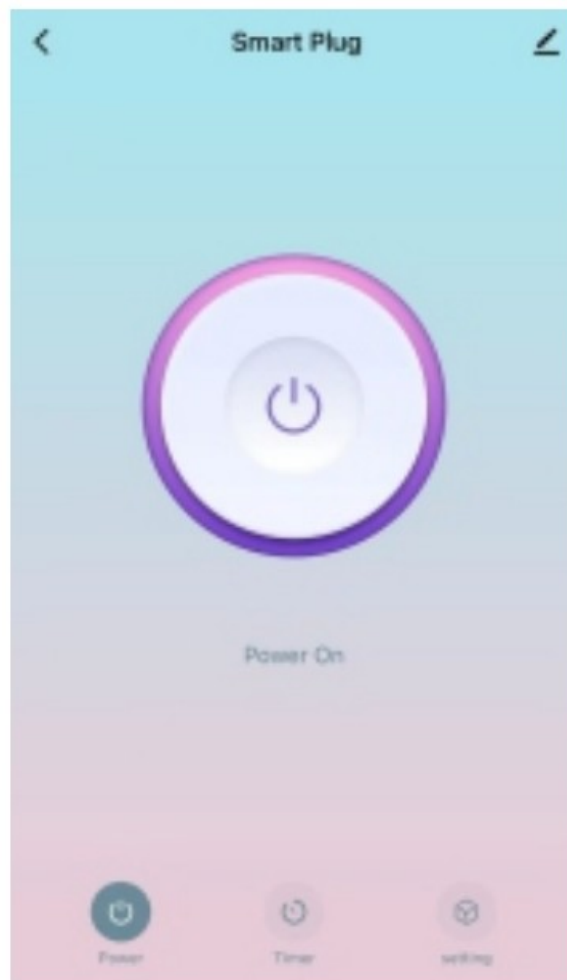


Step 5: Open AvatarControls APP, tap “+” icon to add devices, then a reminder to add discovered devices will automatically pop up, you just follow the in-APP instruction to connect the Smart Plug to your Wi-Fi network.

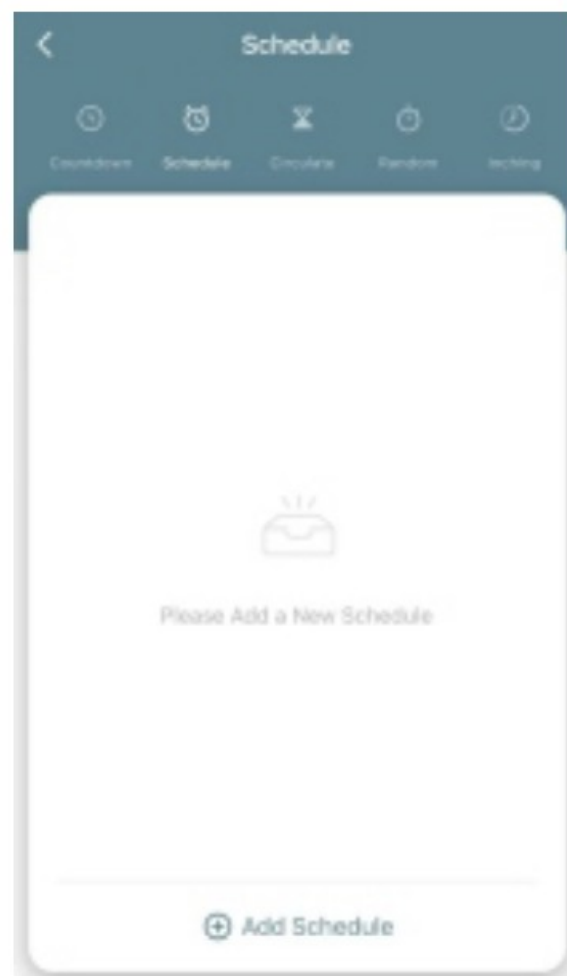
– Operation guide –

a. Tap*+icon	b.Tap'Go to add'	c Tap*+ icon
		
d.Enter password	e. Adding device	f. Tap * ✎ " to rename
		

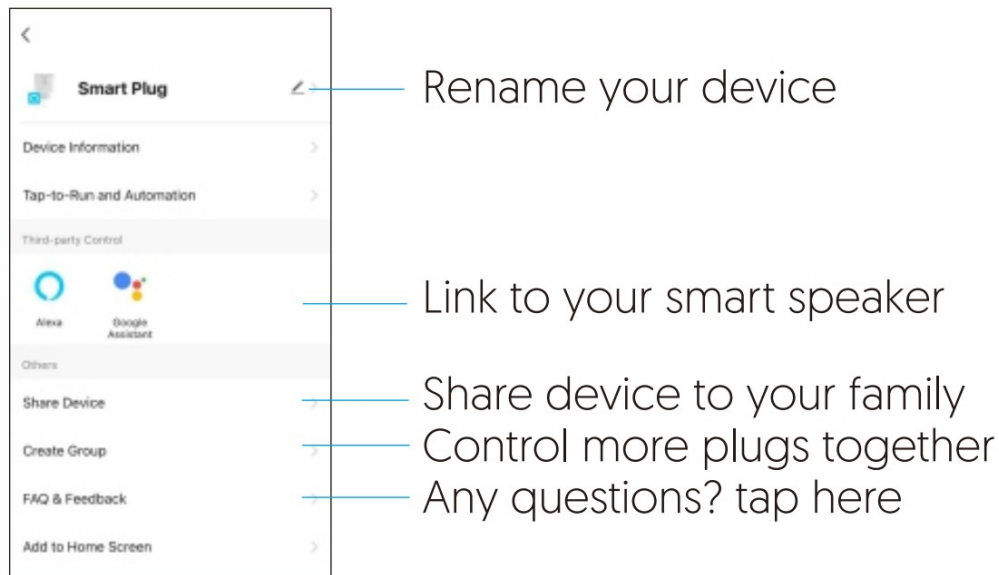
g. Main c Panel




h. Schedule Setting

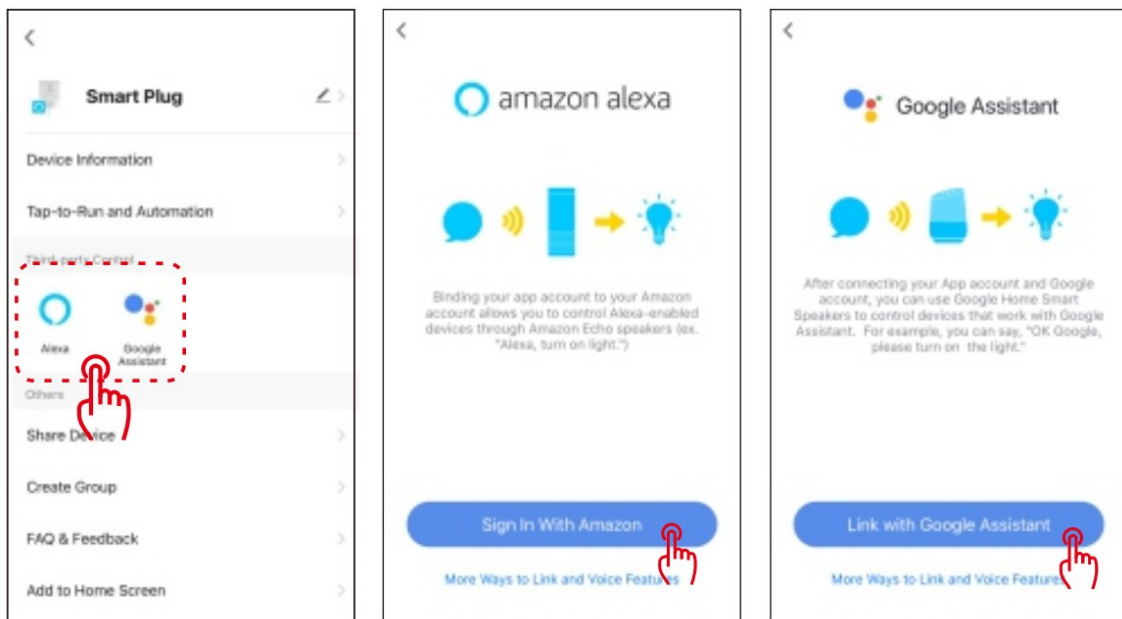


i . More functions page:



How to work with Amazon Echo or Google Home?

1. Tap the “” icon of the smart plug main panel
2. Tap the 3rd-party control icon to be operated
3. Sign in with your Amazon Alexa or Google Home account.



Now, you can call Alexa or Google voice control your named device,
 “Alexa/Hey Google, turn on smart plug”
 “Alexa/Hey Google. tur off the fan”



Operating Videos

<https://www.youtube.com/channel/UCsGqB4IKW1NmZIK2mfBBAww>

Need Help?

 service@avatarcontrols.com



Documents / Resources

 The image shows the cover of the user manual for the Avatar Controls Smart WiFi Plug. It features the Avatar Controls logo, the product name "Smart WiFi Plug", and the title "User Manual". There are also three small circular icons and logos for Google Assistant and Amazon Alexa at the bottom.	<p>avatar CONTROLS 30142264 Smart WiFi Plug [pdf] User Manual 30142264 Smart WiFi Plug, 30142264, Smart WiFi Plug, WiFi Plug, Plug</p>
---	--

References

- [User Manual](#)

[Manuals+](#), [Privacy Policy](#)

This website is an independent publication and is neither affiliated with nor endorsed by any of the trademark owners. The "Bluetooth®" word mark and logos are registered trademarks owned by Bluetooth SIG, Inc. The "Wi-Fi®" word mark and logos are registered trademarks owned by the Wi-Fi Alliance. Any use of these marks on this website does not imply any affiliation with or endorsement.