

Avantree Saturn Pro Bluetooth Audio Transmitter Receiver 2 In 1



# Avantree Saturn Pro Bluetooth Audio Transmitter Receiver 2 In 1 User Manual

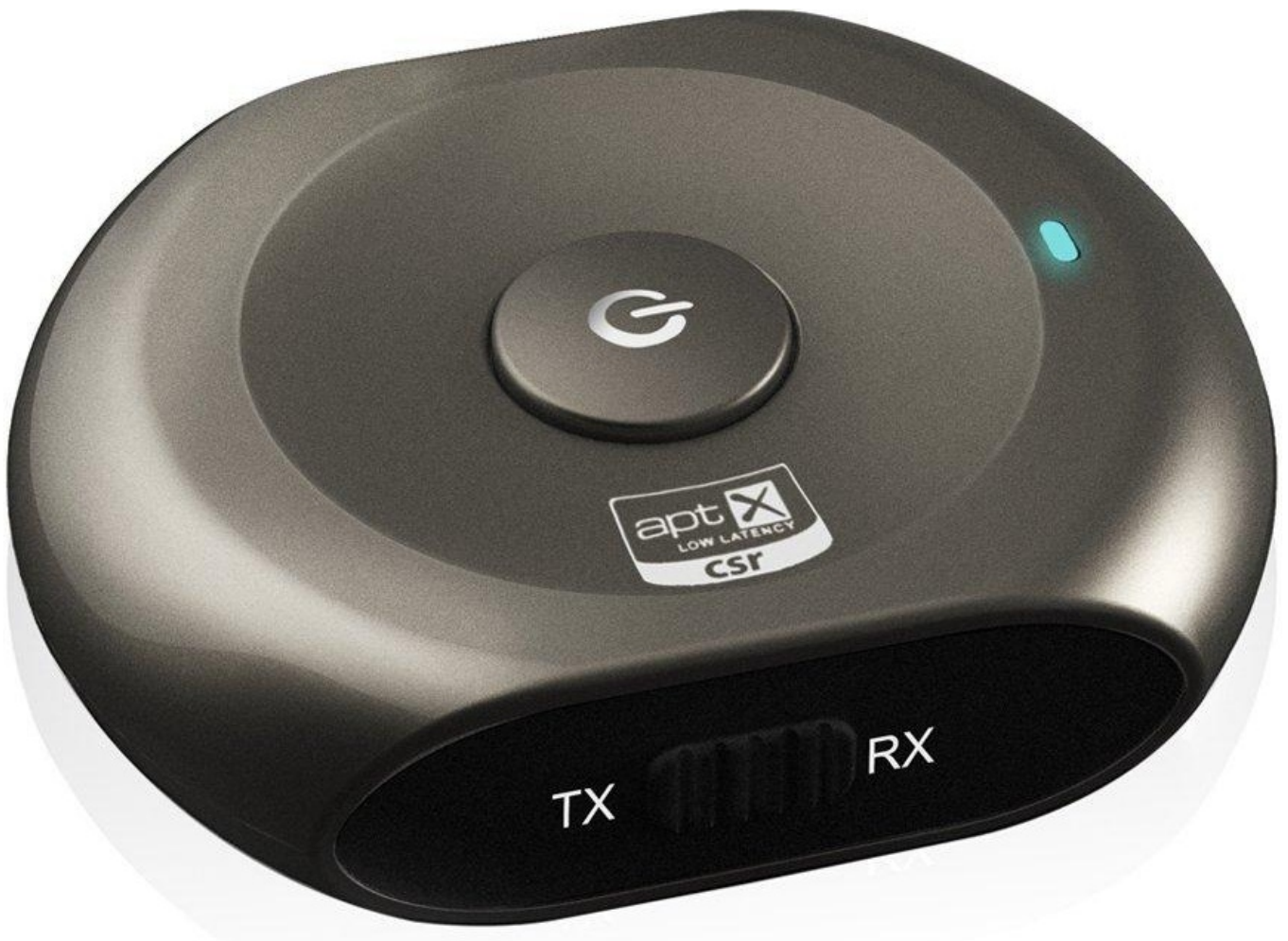
[Home](#) » [Avantree](#) » Avantree Saturn Pro Bluetooth Audio Transmitter Receiver 2 In 1 User Manual 

## Contents

- [1 Avantree Saturn Pro Bluetooth Audio Transmitter Receiver 2 In 1](#)
- [2 FAQs](#)
- [3 Product Description](#)
- [4 Product Overview](#)
- [5 What's in the box](#)
- [6 Charging](#)
- [7 Transmitter – Turn On / Off](#)
- [8 Receiver – pairing with a Bluetooth device](#)
- [9 Product Specification](#)
- [10 Documents / Resources](#)
  - [10.1 References](#)



**Avantree Saturn Pro Bluetooth Audio Transmitter Receiver 2 In 1**



## Product Information

### Specifications:

- LED Indicator
- Multi-Function Button (MFB) (Power On/Off / Pairing / Pause / Play)
- Micro USB charging socket
- 3.5mm audio jack
- TX / RX switch

### Product Overview:

The product, Avantree Saturn Pro, is a versatile device that can function as both a transmitter and a receiver. It comes with various features and components:

1. LED Indicator: This indicator provides visual feedback on the status of the device.
2. Multi-Function Button (MFB): The MFB serves multiple purposes, including power on/off, pairing, pause, and play.
3. Micro USB charging socket: This socket allows you to charge the device using a standard USB power source.
4. 3.5mm audio jack: The audio jack enables you to connect the device to various audio devices.
5. TX / RX switch: This switch allows you to toggle between transmitter (TX) and receiver (RX) modes.

**Included in the box:**

- A – Avantree Saturn Pro
- B – 3.5mm audio cable
- C – RCA audio cable
- D – 3.5mm audio connector
- E – USB charging cable
- F – User manual
- G – Quick guide
- H – Warranty card

**Charging:**

The Saturn Pro is equipped with a built-in rechargeable battery that offers long periods of operation and standby time. To ensure optimal performance, follow these steps for charging:

1. Insert one end of the Micro USB charging cable into the Micro USB socket of the Saturn Pro.
2. Plug the other end of the cable into a standard USB power source, such as a laptop or desktop computer.
3. The initial charge cycle takes approximately 3 hours to reach full capacity. Subsequent charges should take around 2 hours.
4. During charging, the LED indicator will show red. Once charging is complete, the LED will turn off.
5. If the device has not been used for a few months, it may take 15-35 minutes before the LED lights up when charging for the first time.
6. We recommend fully charging the device at least every two months.

**Transmitter – Turn On / Off:**

To turn on the transmitter mode of the Saturn Pro:

1. Slide the TX / RX switch to the TX mode.
2. Press and hold the Multi-Function Button (MFB) for approximately 7 seconds until the LED indicator shows blue for 1 second.

**To turn off the transmitter mode:**

1. Press and hold the MFB for approximately 3 seconds until the LED indicator shows red for 1 second and then turns off.

**Transmitter – Pairing with a Bluetooth device:**

To pair the Saturn Pro with a Bluetooth stereo device in transmitter mode:

1. Ensure that the Saturn Pro is powered up in TX mode.
2. Make sure your Bluetooth stereo receiver device supports the Bluetooth A2DP profile.
3. The Saturn Pro will pair with stereo Bluetooth receiver devices using the PIN codes 0000, 1111, 8888, or 1234.

LED indications under TX mode:

- LED blinks BLUE continuously: Pairing mode, lasts for 2 minutes.
- LED flashes BLUE once every second: Standby mode – not connected to any other device.
- LED flashes BLUE once every 5 seconds: Device connected with SBC.
- LED flashes BLUE twice every 5 seconds: Device connected with aptX.
- LED flashes BLUE three times every 5 seconds: Device connected with aptX low latency.
- LED blinks RED: Low battery power – Please recharge.

### **Receiver – Turn On / Off:**

To turn on the receiver mode of the Saturn Pro:

1. Slide the TX / RX switch to the RX mode.
2. Press and hold the Multi-Function Button (MFB) for approximately 7 seconds until the LED indicator shows blue for 1 second.

To turn off the receiver mode:

1. Press and hold the MFB for approximately 3 seconds until the LED indicator shows red for 1 second and then turns off.

### **Receiver – Pairing with a Bluetooth device:**

To pair the Saturn Pro with a Bluetooth device in receiver mode:

1. Ensure that the Saturn Pro's TX/RX switch is set to RX mode and that the device is turned off.
2. Plug the 3.5mm audio cable into the Saturn Pro's 3.5mm audio socket.
3. Connect the other end of the cable to the audio input of your home hi-fi stereo system.
4. Press and hold the Multi-Function Button (MFB) for approximately 7 seconds until the LED indicator quickly blinks blue and red alternately, indicating it is in pairing mode.

### **FAQs**

- **Q: What should I do if the LED indicator does not show red when first charging after not using the device for a few months?**
  - A: If the LED indicator does not show red when first charging after a period of inactivity, please wait for 15-35 minutes. The LED should light up within that time frame.
- **Q: How often should I fully charge the device?**
  - A: We recommend fully charging the device at least every two months to maintain optimal performance.
- **Q: What are the supported PIN codes for pairing in transmitter mode?**
  - A: The Saturn Pro will pair with stereo Bluetooth receiver devices using the PIN codes 0000, 1111, 8888, or 1234.
- **Q: How can I identify the connection status of the Saturn Pro under transmitter mode?**
  - A: The LED indicator provides different indications for different connection statuses. Please refer to the

LED indications section under transmitter mode for more details.

• **Q: Can I change the TX/RX mode after powering up the Saturn Pro?**

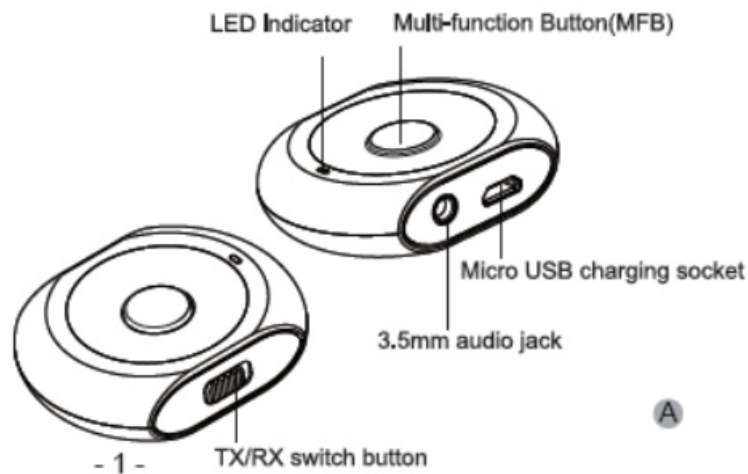
- A: No, the TX/RX mode cannot be changed after powering up the Saturn Pro. Please ensure you have selected the desired mode before turning on the device.

## Product Description

The Avantree Saturn Pro is a 2-in-1 Bluetooth receiver and transmitter incorporating the latest “aptX Low Latency” codec for Bluetooth High quality audio streaming. The Saturn Pro is simple to use and enables any audio device to transmit and receive. It can be used to enable a phone to transmit music to a home stereo system, or just as easily, to allow a CD player or other device to transmit music to a Bluetooth enabled speaker system or headphones. With its low latency codec, Saturn Pro also supports online game playing; TV/Movie audio transmission; real-time music recording, etc. The compact design and internal rechargeable battery provides long play time and versatility in use. Saturn Pro is the ideal solution to stream audio without bounds or limits.

## Product Overview

1. LED Indicator
2. Multi-Function Button (MFB) (Power On/Off / Pairing / Pause / Play)
3. Micro USB charging socket
4. 3.5mm audio jack
5. TX / RX switch



## What's in the box

- A Avantree Saturn Pro
- B 3.5mm audio cable
- C RCA audio cable
- D 3.5mm audio connector
- E USB charging cable
- F User manual
- G Quick guide
- H Warranty card

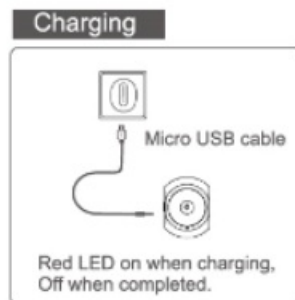


## Charging

Saturn Pro comes with a built-in rechargeable battery that provides for long periods of operation and standby time. We recommend charging the battery fully before using Saturn Pro for the first time.

1. Insert one end of the Micro USB charging cable to the Saturn Pro Micro USB socket and plug the other end into a standard USB power source, such as a laptop or desktop computer.
2. The battery takes 3 hours to charge to its full capacity for the first time. Each subsequent charge cycle should then take around 2 hours.
3. The LED indicator will show red when charging and will go out when charging is complete.
4. If you have not used the device for a few months, the LED might not show red when first charging. It may take 15-35 minutes before the LED lights up.
5. We recommend fully charging the device at least every two months.

Charging times may vary when using different chargers.



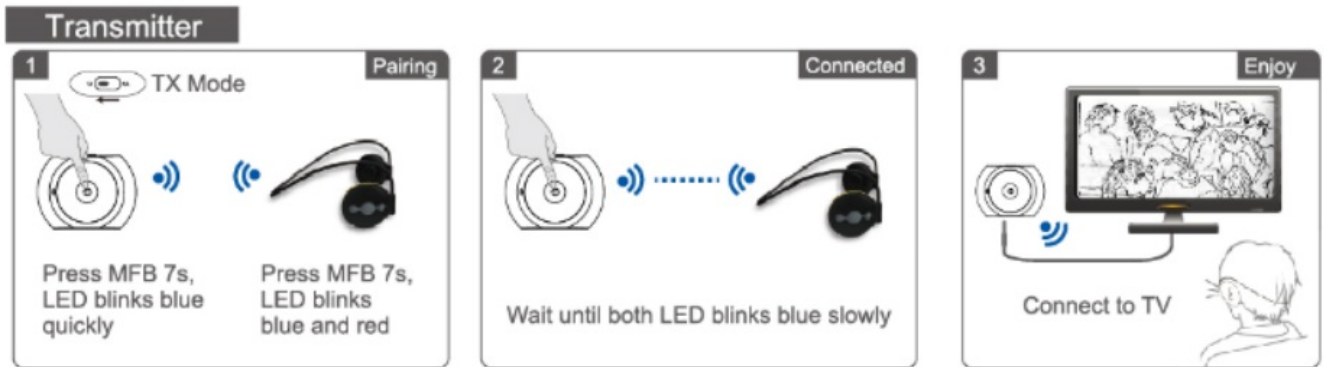
## Transmitter – Turn On / Off

Slide the TX / RX switch to the TX position before turning on. The TX or RX mode cannot be changed after powering up the Saturn Pro.

- Turn On: Press and hold the MFB for about 5 seconds until the LED lights are blue for 1 second.
- Turn Off: Press and hold the MFB for about 3 seconds until the LED shows red for 1 second and then goes out.
- Note: For first-time use or first-time turn-on after the connection list has been cleared, in transmit mode Saturn Pro will automatically enter pairing mode, indicated by the LED indicator flashing blue quickly.

## Transmitter – Pairing with a Bluetooth device

Once Saturn Pro is powered up in TX mode and has connected to a bluetooth stereo device, you can stream music wirelessly. Before pairing, please make sure your Bluetooth stereo receiver device supports the Bluetooth A2DP profile



### Pairing procedure:

1. Ensure Saturn Pro is set to TX mode and that the device is off.
2. Plug the 3.5 mm audio cable into Saturn Pro, and plug the other end into the audio output of audio source system (iPod, TV, Amplifier etc.)
3. Power on your Bluetooth stereo receiver and set it in pairing mode.
4. Press and hold Saturn Pro's MFB for around 7 seconds, until the LED indicator blinks blue quickly – indicating pairing mode.
5. Place Saturn Pro within 1 meter of your Bluetooth receiver. Saturn Pro will then automatically search, pair and connect with your Bluetooth receiver.
6. After successful connection, the LED indicator will blink blue slowly.

### Notes:

1. Saturn Pro will flash the LED indicator blue 3 times within 5 seconds of connecting with another Bluetooth device which also has an aptX low latency codec. When both transmitter and receiver incorporate aptX low latency codecs, this will provide for low latency and higher audio quality audio compared with standard Bluetooth audio devices.
2. Pairing mode lasts for 2 minutes. If no devices can be connected within 2 minutes, Saturn Pro will enter standby mode.
3. Saturn Pro will pair with stereo Bluetooth receiver devices with the PIN codes "0000", "1111", "8888" or "1234".

### LED indications

LED indicator	Status of Saturn Pro under TX mode
LED blinks BLUE continuously	Pairing mode, lasts for 2 minutes
LED flashes BLUE once every second	Standby mode – not connected to any other device
LED flashes BLUE once every 5 seconds	Device connected with SBC
LED flashes BLUE twice every 5 seconds	Device connected with aptX
LED flashes BLUE three times every 5 seconds	Device connected with aptX low latency
LED blinks RED	Low battery power – Please recharge

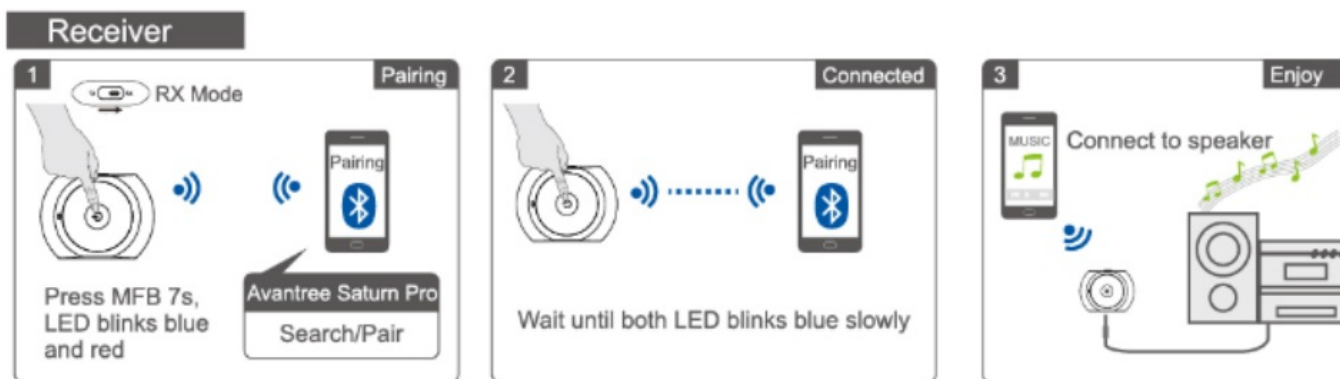
We find that most problems are caused by improper pairing. Please follow the online instructions step-by-step!

### Receiver – Turn On / Off

Slide the TX / RX switch to RX mode before turning on. The TX or RX mode cannot be changed after powering up Saturn Pro.

- Turn On: Press and hold Saturn Pro's MFB for around 7 seconds until the LED indicator shows blue for 1 second.
- Turn Off: Press and hold the MFB for around 3 seconds until the LED shows red for 1 second and then goes out.

### Receiver – pairing with a Bluetooth device



### Pairing procedure:

1. Ensure Saturn Pro's TX/RX switch is set to RX mode and that the device is off.
2. Plug the 3.5 mm audio cable into Saturn Pro's 3.5 mm audio socket and plug the other end into the audio input of your home hi-fi stereo system.
3. Press and hold Saturn Pro's MFB for around 7 seconds until the LED indicator quickly blinks blue and red alternately, indicating in pairing mode.
4. Place Saturn Pro within 1 metre of your Bluetooth-enabled phone. Set your smartphone to Bluetooth mode:  
Taking the iPhone as an example: from your iPhone home page, tap "Settings" "General" "Bluetooth" "On"  
(Note: Different phones or tablets have different procedures to activate Bluetooth mode and to pair and connect with other Bluetooth devices. The instructions here are just for general guidance – please check your phone or tablet's documentation in case of difficulties).



5. iPhone will auto scan the available Bluetooth devices. Click on “Avantree Saturn Pro” from the list of devices shown and according to the indication offered, tap on “Yes” or ”Confirm” .
6. After pairing successfully, Saturn Pro’s LED indicator will blinks blue slowly.

#### Notes:

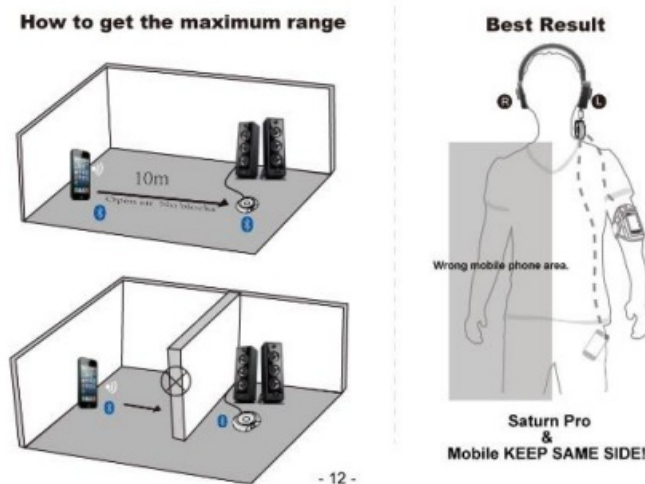
1. Pairing mode will last 2 minutes. The receiver will enter standby mode if no devices can be connected within 2 minutes.
2. If pairing fails, please power off Saturn Pro and re-pair according to above procedures.
3. Saturn Pro can remember 8 paired devices. When the number of paired devices exceeds 8, the oldest one will be removed from the list.
4. Every time Saturn Pro powers on, it will connect to the last connected device automatically. If you want to pair it to another device, please turn off the current paired device’s Bluetooth mode and then try to pair Saturn Pro to the new device, according to the above pairing procedure.

#### LED Indications:

LED indicator	Status of Saturn Pro under RX mode
LED blinks BLUE then RED continuously	Pairing mode. Lasts for 2 minutes.
LED flashes BLUE once every second	Standby mode. Not connected to any other device.
LED flashes BLUE once every 5 seconds	Device connected with SBC
LED flashes BLUE twice every 5 seconds	Device connected with aptX
LED flashes BLUE three times every 5 seconds	Device connected with aptX low latency
LED flashes BLUE four times every 5 seconds	Device connected with AAC decode
LED blinks RED	Low battery power. Please recharge.

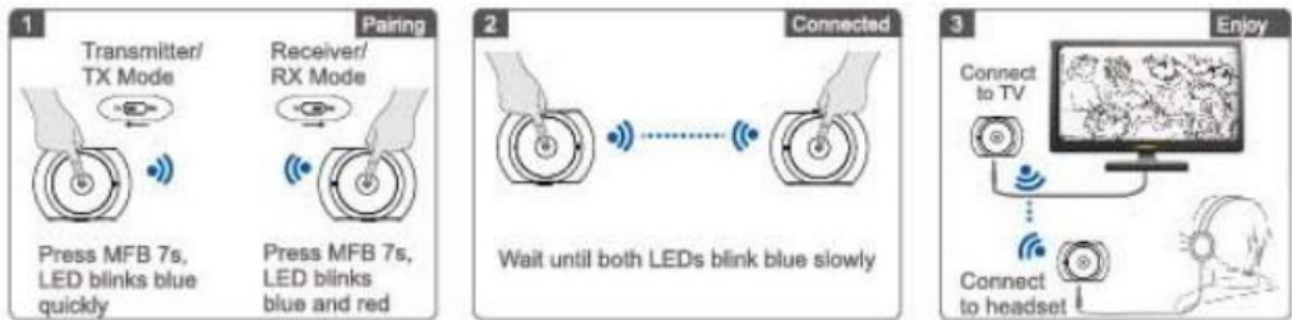
#### Obtaining the maximum stable range.

Please ensure there are no obstacles (walls, corners, partitions etc.,) between the receiving and transmitting devices. Also, when wearing devices, keep them to the same side of your body (see diagram below).



## Use Two as a Pair

- Saturn Pros as a pair, with one as a transmitter and one as a receiver, allowing you to use the audio output device of your choice in conjunction with the AptX codec for lower wireless latency.

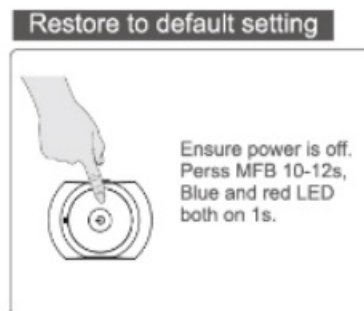


## Reconnect

- A. Automatic connect: When Saturn Pro is powered up, it will automatically reconnect with the last connected device.
- B. Manual connect: When Saturn Pro is in standby mode and not connected to any device, a single short press of the MFB will automatically reconnect the last connected device.
- C. Auto off: Saturn Pro will automatically power off if no devices are connected within 5 minutes.

## Restore Factory Default Setting

Ensure Saturn Pro is powered off, then press and hold the MFB for 10 -12 seconds, until both the BLUE and RED LEDs are both on for about one second.



## Product Specification

- Bluetooth 3.0 with EDR
- Bluetooth profile: A2DP and AVRCP
- Audio codec: aptX-LL, aptX, SBC, AAC
- Operating Range: Class 2, 10 meters
- TX mode battery hours: up to 15 hours
- RX mode battery hours: up to 10 hours
- Standby time: up to 150 hours
- Charging time: around 2-3 hours
- Charging input voltage: DC 5V
- Battery: 270mAH rechargeable LI-Ion battery

- Weight: Approx 48.5g
- Size: 50mm(L) x 37mm(W) x 13mm(H)

Working and standby times may vary when used with different mobile phones or other Bluetooth devices, usage settings, usage styles and environments

## **Safety Information**

- To avoid any damage or malfunction of this device, do not drop the device from high places.
- Keep this device away from humidity, water and all other liquids. If the device is exposed to water, moisture or any other liquid, do not operate it – this will mitigate risk of explosion of or damage to the device or of electric shock or injury to yourself.
- Do not place or keep this device near any heat source, such as direct sunlight, radiators, stoves or other apparatus which produces heat. This may cause an explosion risk and/or degrade device performance and reduce battery life.
- Do not modify, repair or disassemble this device (especially the battery: this may cause an explosion). Doing so will void the warranty.
- Do not place heavy objects on this device.
- Use only supplied and approved charger.
- Replacement or service must be performed only by a qualified service center or the manufacturer.
- Unplug when not in use for long periods and during lightning storms.

## **CAUTION: ELECTRIC SHOCK HAZARD**

- The battery used in this device may present a risk of fire or chemical burn if mistreated.

## **Declaration of Conformity**


## **Trademark Statement**

The Bluetooth word mark and logos are owned by the Bluetooth SIG, Inc. Avantree is a trademark owned by Avantronics Limited. apt-X™ words and logos marked with a ™ or ® are trademarks registered or owned by CSR plc or one of its group companies and may be registered in one or more jurisdictions except that not all such marks are registered in all countries where products are available.

- [www.avantree.com](http://www.avantree.com)



Documents / Resources

	<a href="#">Avantree Saturn Pro Bluetooth Audio Transmitter Receiver 2 In 1</a> [pdf] User Manual Saturn Pro Bluetooth Audio Transmitter Receiver 2 In 1, Saturn Pro, Bluetooth Audio Transmitter Receiver 2 In 1, Transmitter Receiver 2 In 1, Receiver 2 In 1
---	--

References

-  [Manual-Hub.com - Free PDF manuals!](#)
- [User Manual](#)

[Manuals+.](#) [Privacy Policy](#)

This website is an independent publication and is neither affiliated with nor endorsed by any of the trademark owners. The "Bluetooth®" word mark and logos are registered trademarks owned by Bluetooth SIG, Inc. The "Wi-Fi®" word mark and logos are registered trademarks owned by the Wi-Fi Alliance. Any use of these marks on this website does not imply any affiliation with or endorsement.