

[Skip to content](#)

Manuals+

User Manuals Simplified.



Avantree BTTC-200L-TTN-DB Lock Portable Low Latency Bluetooth Transmitter Receiver Set User Guide

[Home](#) » [Avantree](#) » Avantree BTTC-200L-TTN-DB Lock Portable Low Latency Bluetooth Transmitter Receiver Set User Guide

Avantree BTTC-200L-TTN-DB Lock Portable Low Latency Bluetooth Transmitter Receiver Set



Contents [hide](#)

[1 Avantree Lock Quick User Guide](#)

[1.1 Troubleshooting](#)

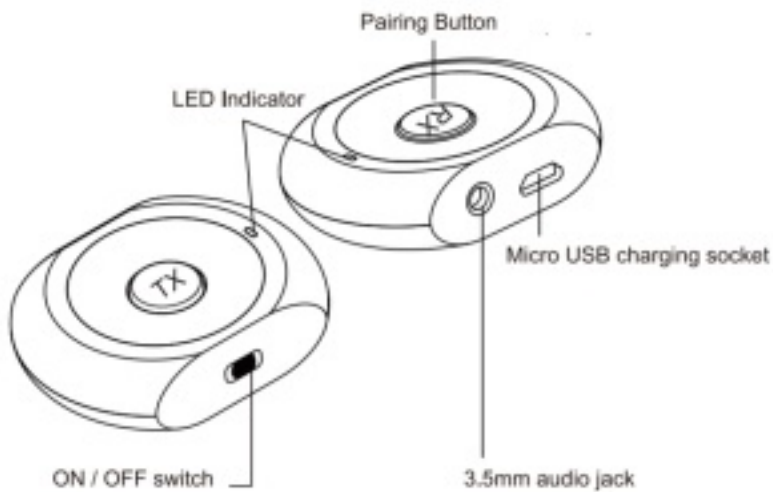
[2 Any questions? Contact](#)

[3 Documents / Resources](#)

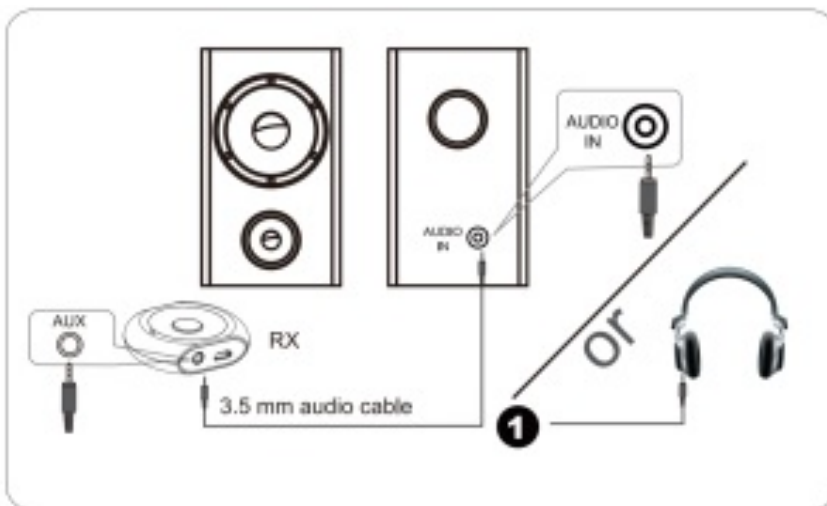
[4 Related Posts](#)

Avantree Lock Quick User Guide

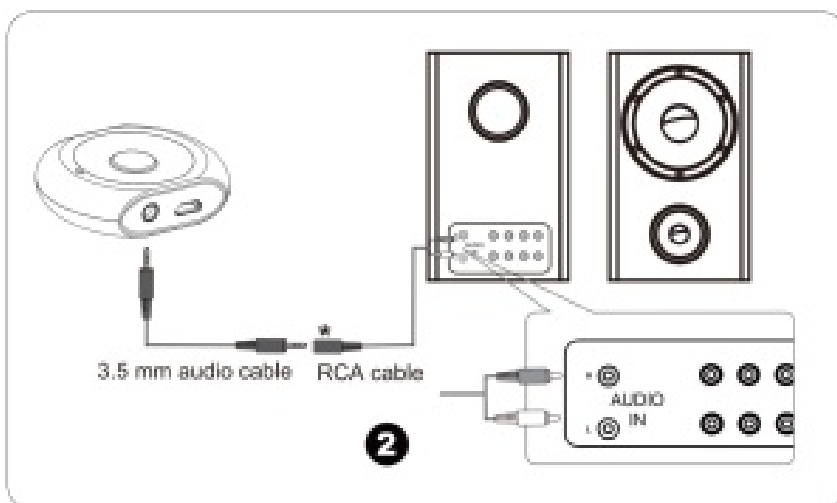
This Is a PRE-PAIRED SE11 Plug-n-Play and Low Latency can ONLY be achieved when using them as a pair.



1. **Validate the OUTPUT**, test with a wired headphone (with an RCA cable if from RCA audio out) and make sure you can hear audio with the wired connection first.
2. **Connect RX** to headphones / speaker via included cable
Connect RX to a non-Bluetooth speaker or Headset with a 3.5mm audio Jack using the Included 3.5mm audio cable.



Connect RX to a non-Bluetooth speaker with an RCA ANALOG OUT via the included RCA cable and 3.5mm audio cable.

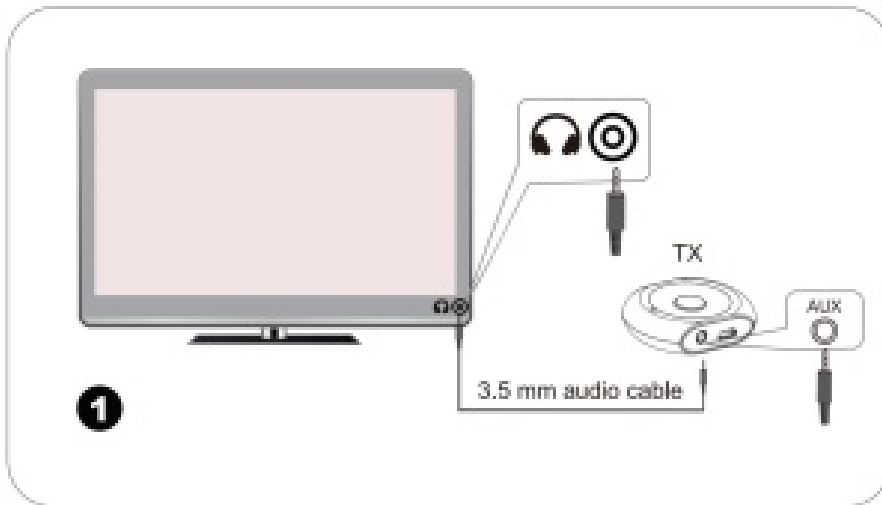


3. **Switch ON** both RX and TX.
4. **Wait for auto-reconnect-** Keep RX & TX close (within 1feet) and wait.
The auto-reconnection normally takes 1-10s.
5. **Connected Indication** – TX flashes blue for 1s then **WHITE** twice every 5s.
And also 'Connected' is announced from the headphone / **speaker**.

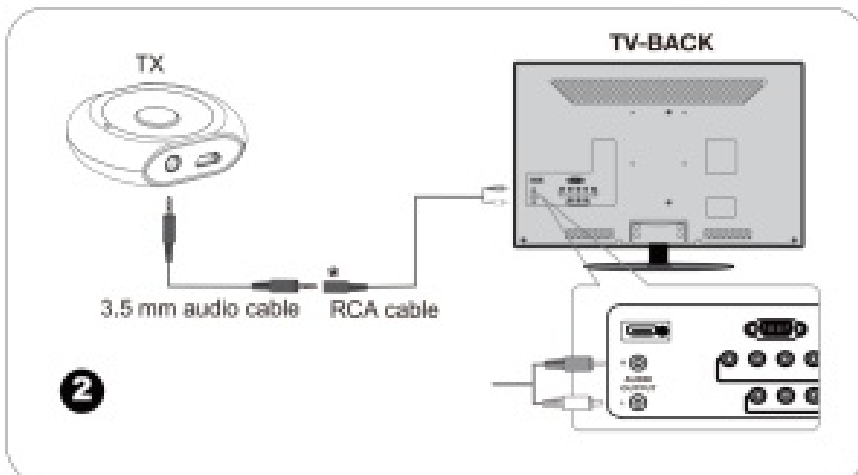


6. **Connect TX** to the your audio source via cable.

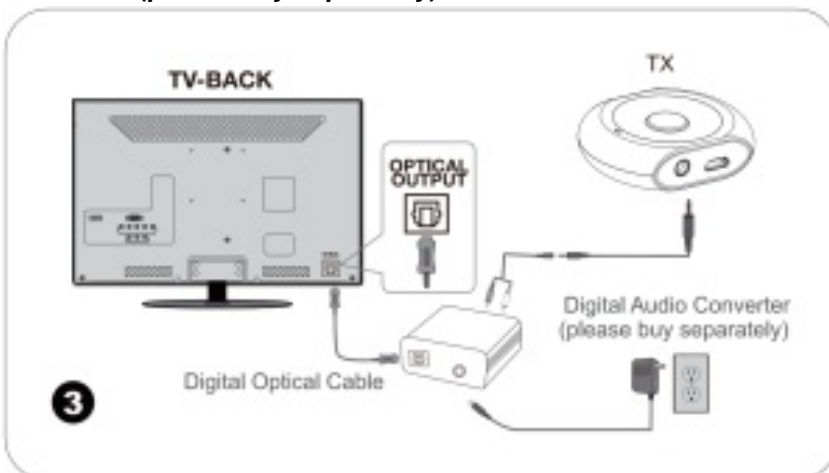
TV with 3.5mm headphone Jack, connect TX to the TV using the Included 3.5mm audio cable



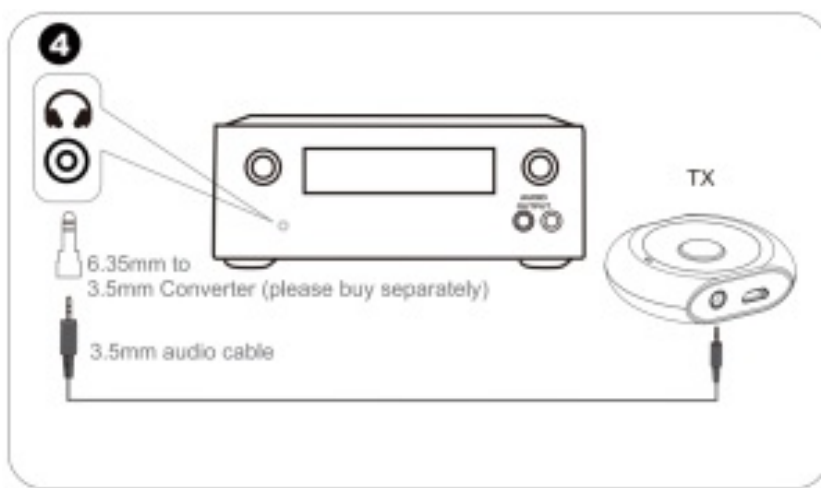
TV with RCA ANALOG OUT, connect TX to the TV using the Included RCA cable



TV WITHOUT RCA analog out or headphone Jack. Connect TX to the TV with a Digital to Analog Audio Converter (please buy separately)



For AYR or other audio source, you have 3 options: Connect TX using 6.35mm audio 3.5mm converter with tha 3.5mm audio cable, RCA cable or Digital to Analog Audio Converter. (Please buy separately)



Troubleshooting

1. How can I adjust the volume?

A: There is no volume control on these units. You can adjust the volume from the audio source, e.g. TV or PC, or speaker. Some TV RCA output volume is fixed, some are not. Consult your TV manufacturer for more details.

2. Can I use the TX and RX unit separately?

A: Yes, you can. You can un-pair them by resetting both units – press and hold the pairing button for 5 seconds until you see BLUE and RED flashing alternately.

Then quickly double click the button and it will be unlocked from TX/ RX unit.

Then you can pair them individually with other devices. For more details refer to support.avantree.com for videos

3. I cannot hear any sound. Why?

– Check that the audio signal going into the TX unit is working. To test, plug the audio cable directly into the headphones – you should be able to hear sound.

– Confirm the TX and RX units are connected – TX flashes blue for 1s then white twice every 5s. RX flashes blue for 2s and then blue once every 5s.

And also “Connected” is announced from the headphone/ speaker. If not, turn the TX and RX units off then on again. If they still cannot connect, please follow these steps to pair them.

(Or search “Lock video guide” on support.avantree.com):

1) Set TX and RX units to pairing mode – starting from off state, then press and hold the pairing button for 5 seconds until both LED flashes BLUE and RED alternately.

2) Keep them close and wait for 5-10 seconds. Once connected you will hear “Connected” from the headphone/ speaker connected with the RX unit

3) Now you can “lock” the connection between the TX and RX units. This ensures they auto-reconnect when they are powered on. Once the 2 devices are connected, double click the pairing button on the TX unit, the LED will turn on WHITE for 1 second.

4. My TV does not have a 3.5mm / RCA audio output. What can I do?

A: You can either use a AC (Amazon> search ‘Avantree DAC’) or reb.Jrn this unit and get an optical supported Bluetooth adapter (Amazon> search ‘Avantree Bluetooth Adapter Optical’).

5. Why do I have static noise or audio cut out?

A: Static noise is normally caused by WIFI or smart TV box interference. So please try to place your device away from other wireless signal sources. Audio cut out could be related to one of the Bluetooth devices trying to connect with other Bluetooth devices at the same time. Please turn Bluetooth off other devices. This can also be caused by a bad connection. Reset the units and pair them again, this sometimes solve the problem.

6. Can I leave the transmitter charging all the time?

A: Yes you can. It works while charging. Red LED will be on when charging and will go off once fully charged.

For the following functions, please check for more details from Avantree Lock User manual or support.avantree.com for FAQ >

1. Use one unit only with another Bluetooth Device
2. Use the set as a BAP/ABAC / FxtandAr to extend the range of existing Bluetooth products you have.

For more help, please email [support.avantree.com](mailto:support@avantree.com) or call +1 800 232 2078 (US), **Tel:** +44 20 B068 2023 (UK).

Any questions? Contact

Support@avantree.com

(Response Time: 4-24h, excl. holidays)

Telephone Support (Mon-Fri):

- **USA/ CANADA** +1 800 232 2078 (EN, PST 9am-5pm)
- **UK:** +44 20 8068 2023 (EN, CET 10am-7pm)
- **Germany:** +49 32221097297 (DE, CET 10am-7pm)
- **Italy:** +39 06 9480 3330 (IT, CET 9:30am-12:30am)
- **France:** +33 176340312 (FR, CET 8am-10am)
- **Spain:** +34 931786261 (ES, GET 2:30pm-4:30pm)
- **Asia:** +86 755 8228 1190 / 7741-7746 {CN & EN, BJT 9am-5pm}
- **Australia:** +61 2 8310 9897 (CN & EN, BJT 9am-5pm)

Self-service Support:

- 100+ Step by step video Guide – youtube.com/avantree/playlists
- 300+ FAQ: support.avantree.com



Scan for video user guide



Documents / Resources



[Avantree BTTC-200L-TTN-DB Lock Portable Low Latency Bluetooth Transmitter Receiver Set](#) [pdf] User Guide

BTTC-200L-TTN-DB, Lock Portable Low Latency Bluetooth Transmitter Receiver Set

[Manuals+](#)

- [home](#)
- [privacy](#)