



Avantree Alto Clair 2 Smart Wireless Computer Headset User Guide

[Home](#) » [Avantree](#) » Avantree Alto Clair 2 Smart Wireless Computer Headset User Guide 

Avantree Alto Clair 2 Smart Wireless Computer Headset User Guide



Contents

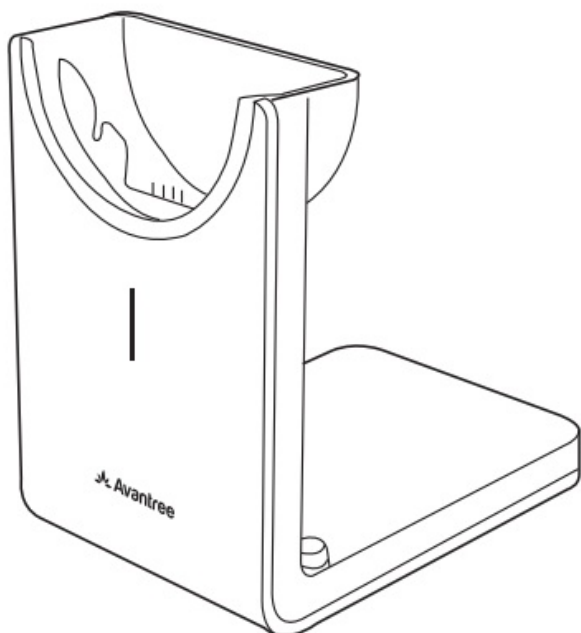
- 1 Package Contents
- 2 Charging
- 3 Overview
- 4 Accessories
- 5 Use with PC
 - 5.1 Connect Dongle
 - 5.2 VoIP Settings
- 6 Subsequent Use
 - 6.1 Audio Settings
- 7 Use with Phone
- 8 Online Support
- 9 Troubleshooting & FAQ
- 10 Contact Us
- 11 Documents / Resources
 - 11.1 References
- 12 Related Posts

Package Contents

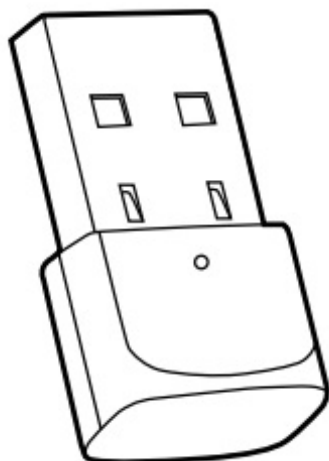
- Alto Clair 2



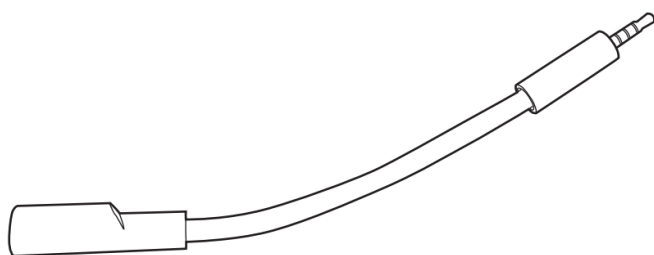
- Charging Stand



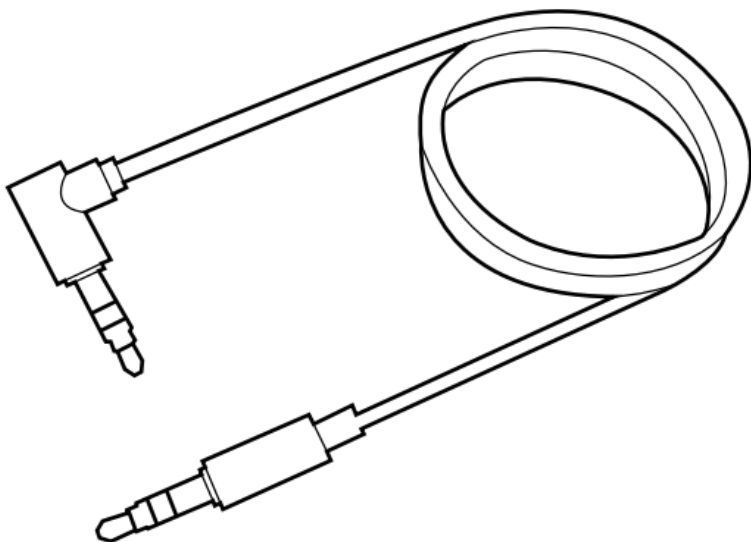
- mini-USB Bluetooth Dongle (DG10)



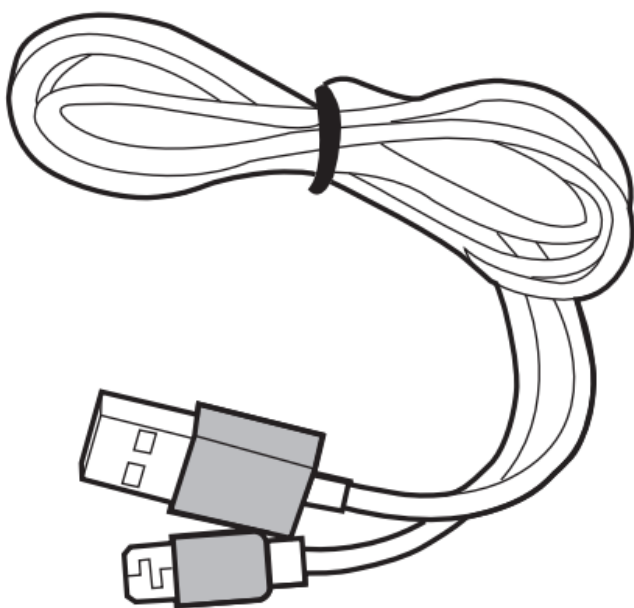
- Boom mic



- AUX audio cable



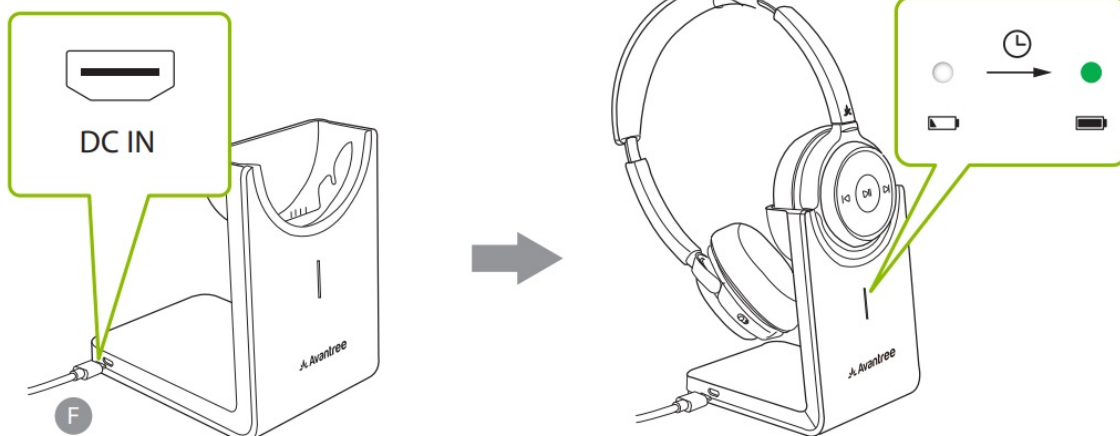
- Micro USB charging cable



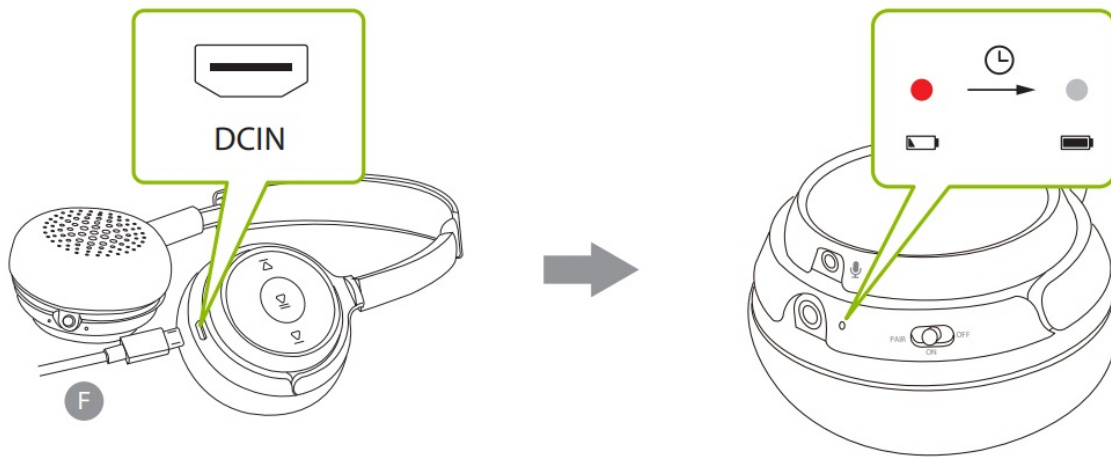
Charging

Input: DC 5V/ 0.5A ~2A

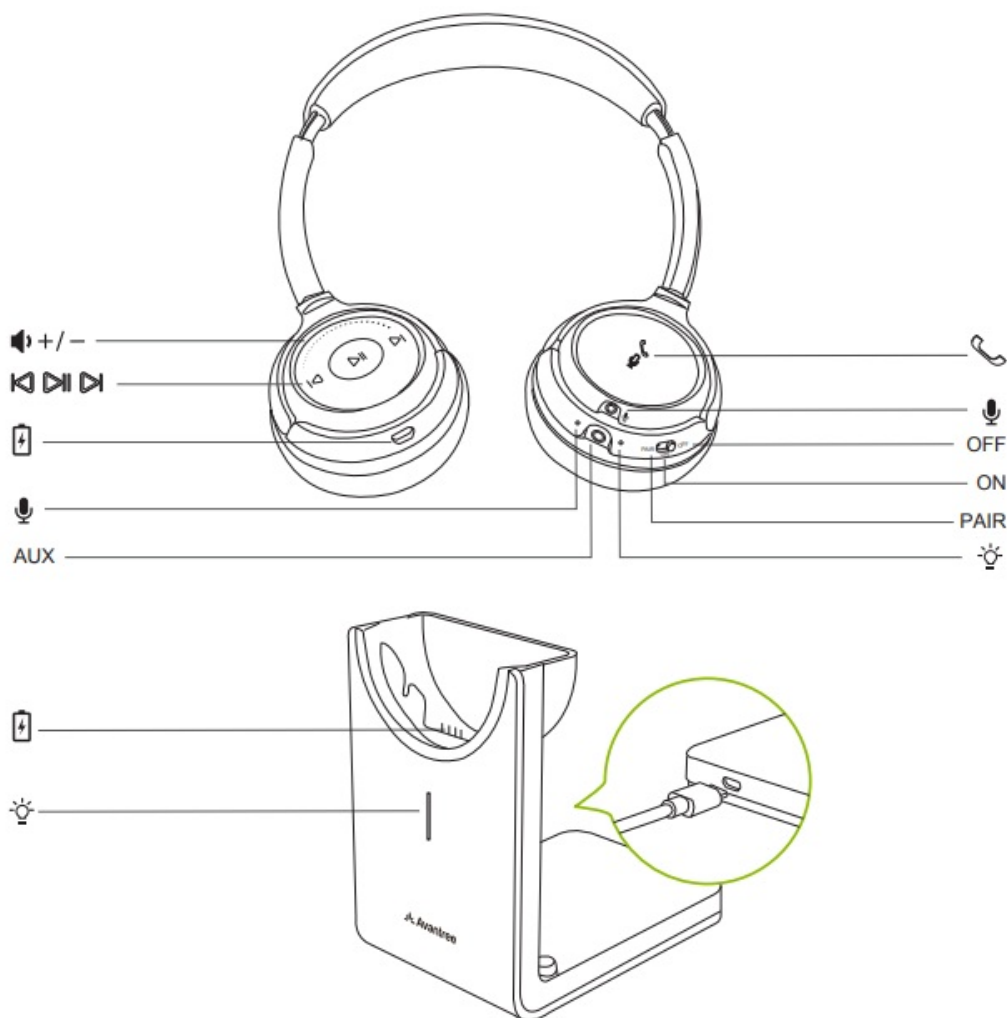
OPTION 1



OPTION 2



Overview



Accessories

- USB Dongle
DG10 mini USB dongle



- Boom Microphone
Boom mic for Alto headphones



- Aux cable
3.5mm AUX cable for Alto Clair 2



- Charging base
Charging base for Alto Clair 2

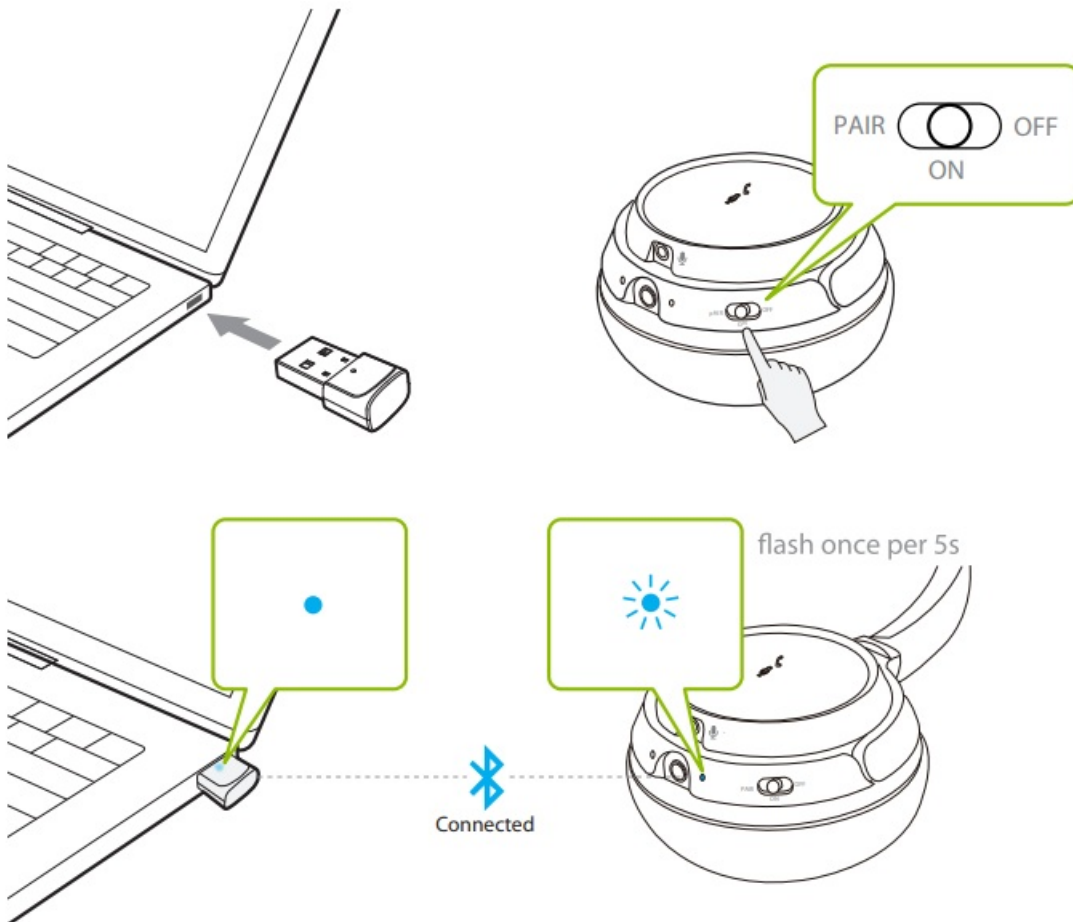


Visit avantree.com for accessories

Use with PC

Connect Dongle

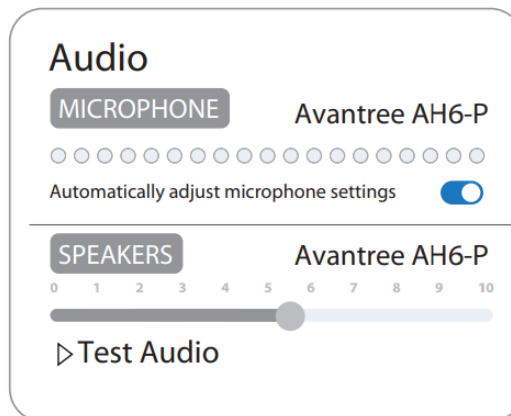
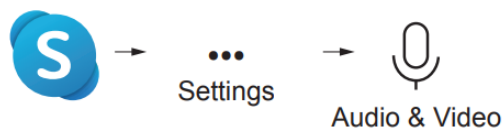
Insert dongle – turn on headphones – they will auto-connect



VoIP Settings

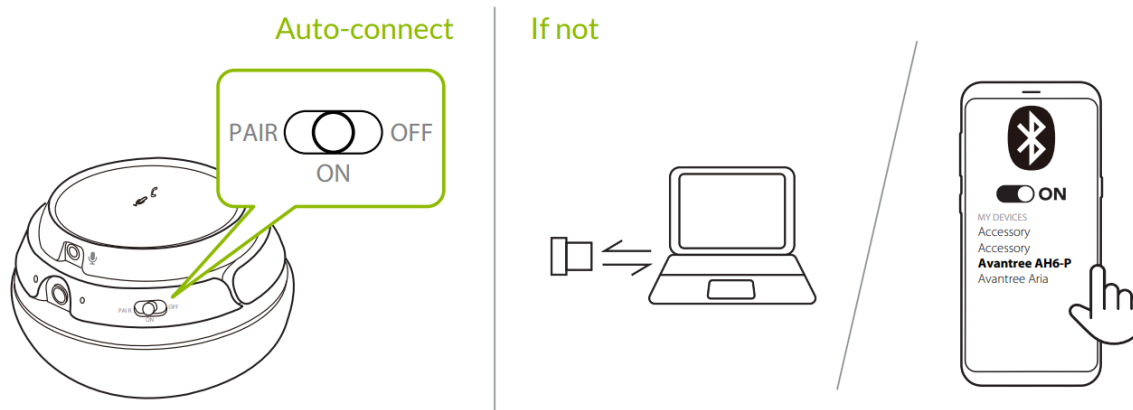
Choose “Avantree AH6-P” as default mic and speaker device. Troubleshooting: can try closing other VoIP

apps and restarting computer



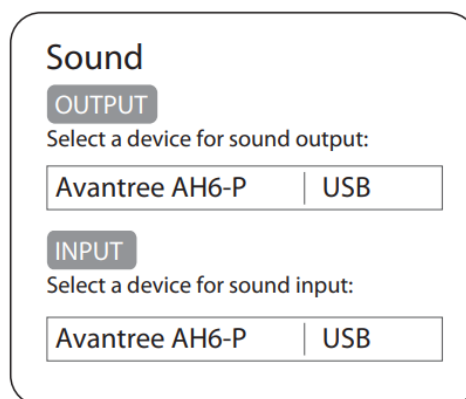
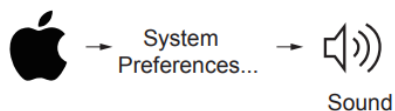
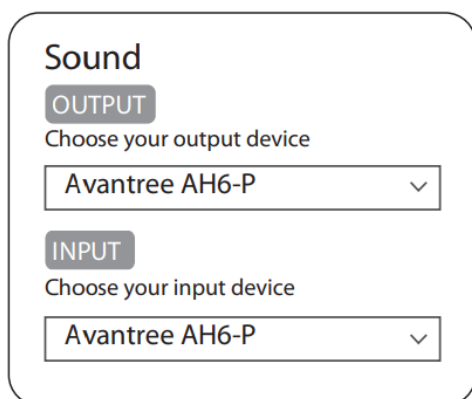
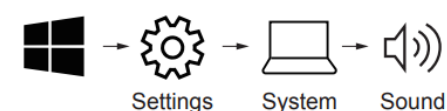
Subsequent Use

Devices should auto-connect when you turn them back on. If not, plug and unplug the dongle and / or select “Avantree AH6-P” on your phone.



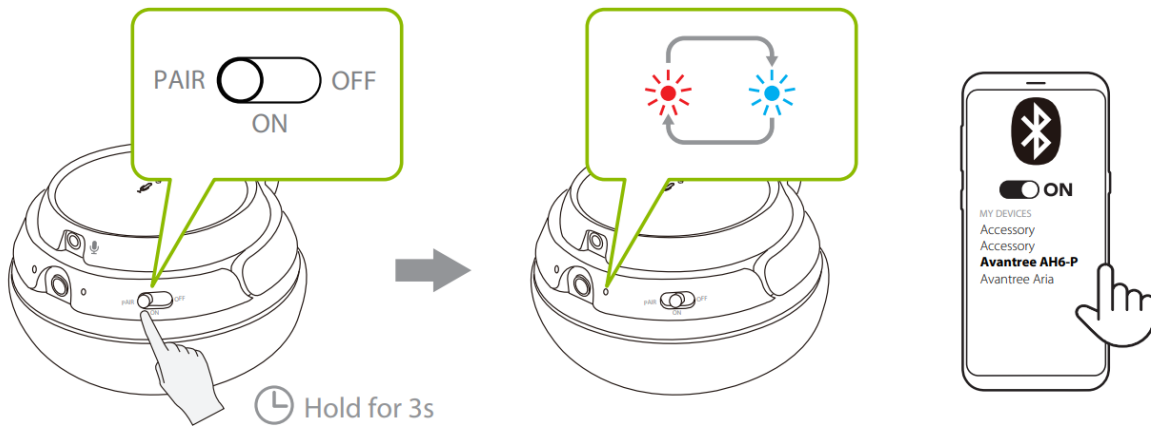
Audio Settings

Choose “Avantree AH6-P” as default audio input / output device



Use with Phone

Slide to “PAIR” and hold- release when indicator flashes BLUE and RED.
Select “Avantree AH6-P” on phone.



Online Support

Troubleshooting & FAQ

1. Why can't people hear me on Zoom / Teams?
2. How do I connect / reconnect my headphones?
3. How do I switch the audio from my PC to my phone and vice versa?

Contact Us



Ticket Support: avantree.com/submit-a-ticket



Support Email: support@avantree.com



USA / Canada: +1800 232 2078 (US Toll Free, 9am-6pm PST, Mon-Fri)

Faqs: avantree.com/support/alto-clair-2

Register: product at: avantree.com/product-registration



Scan Me



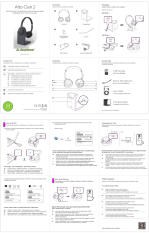
Model no.: BTHT-1060

Dispose of the packaging and this product in accordance with the latest provisions.

Z-PKQG-1060-V0



Documents / Resources

| | |
|---|---|
|  | <p>Avantree Alto Clair 2 Smart Wireless Computer Headset [pdf] User Guide Alto Clair 2, Smart Wireless Computer Headset, Wireless Computer Headset, Computer Headset, Alto Clair 2, Headset</p> |
|---|---|

References

- [Wireless TV Headphones, Devices, and Audio Solutions | Avantree](#)
- [Avantree - Product Registration](#)
- [Support Center | Avantree](#)
- [Alto Clair 2 Product Support](#)