

# Avant-Garde Labs DAF4JQ9wbO4 Memory Card Exchange Instructions

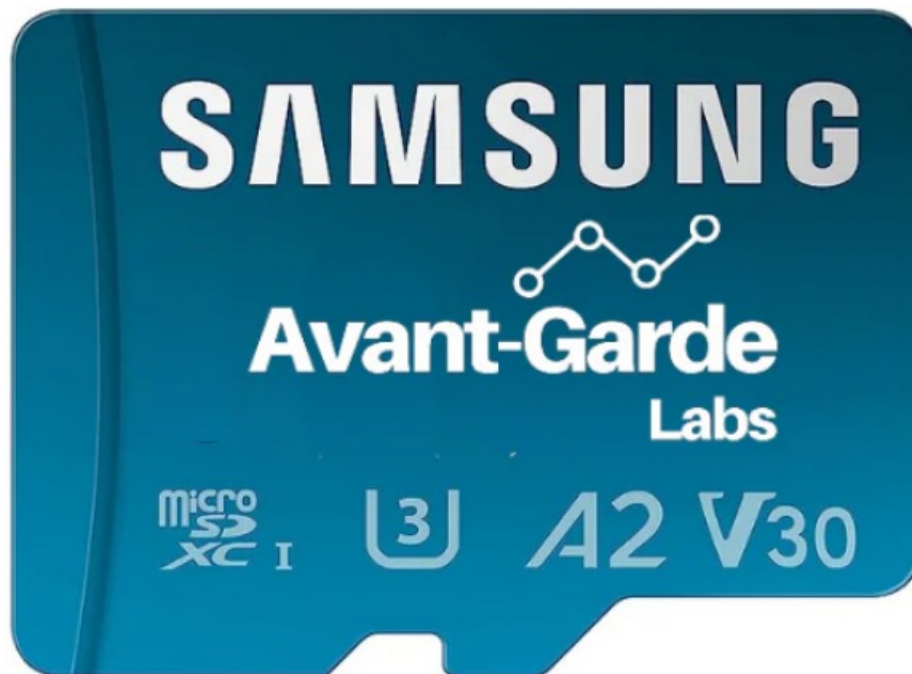
[Home](#) » [Avant-Garde Labs](#) » Avant-Garde Labs DAF4JQ9wbO4 Memory Card Exchange Instructions 

## Contents

- [1 Avant-Garde Labs DAF4JQ9wbO4 Memory Card Exchange](#)
- [2 Product Information](#)
- [3 Product Usage Instructions](#)
- [4 Frequently Asked Questions](#)
- [5 Memory Card Upgrade Instructions](#)
- [6 Documents / Resources](#)
  - [6.1 References](#)
- [7 Related Posts](#)



**Avant-Garde Labs DAF4JQ9wbO4 Memory Card Exchange**



## Product Information

### Specifications:

- Model: Memory Card Upgrade Kit
- Compatible with: Various devices supporting micro SD cards
- Components: Phillips (crosshead) screwdriver, micro SD card, tape

## Product Usage Instructions

### Step 1: Disassembly

**Warning:** Ensure the device is completely powered off before beginning.

1. Using a Phillips (crosshead) screwdriver, remove all 10 arrow marked screws.
2. Remove the front panel carefully.
3. *Pro Tip:* Place a cloth to protect the front panel while being serviced.

### Step 2: Memory Card Replacement

1. With the front panel removed, locate the micro SD card on the green board and swap it with your replacement.
2. Ensure the Micro SD card is fully seated into the slot.
3. *Pro Tip:* Use some tape on top of the SD card and metal slot to prevent it from sliding out over time.

### Step 3: Reassembly

1. Route the 5 wires to the slot with an inch of slack on all sides before placing.
2. Reinstall all 10 screws, hand tight (20 in-lb max).

**Done. Great work!**

Power on and test. If everything looks good, enjoy a cold drink!

## **Troubleshooting**

- **Issue:** Does the white LED turn on?
  - If not, ensure the battery is fully charged.
- **Issue:** Does the red LED turn on?
  - If not, try reinstalling the original SD card.
- **Issue:** Does the display turn on?
  - If not, press the display power button to turn it on.

## **Contact Information:**

If you are still experiencing issues, please email us at: [support@avantgardelabs.co](mailto:support@avantgardelabs.co)

## **Frequently Asked Questions**

**Q: How do I know if my device supports this memory card upgrade?**

A: Please refer to your device's user manual or contact our support team for compatibility information.

**Q: Can I use any micro SD card for replacement?**

A: It is recommended to use a compatible micro SD card with similar specifications to ensure proper functioning of your device.

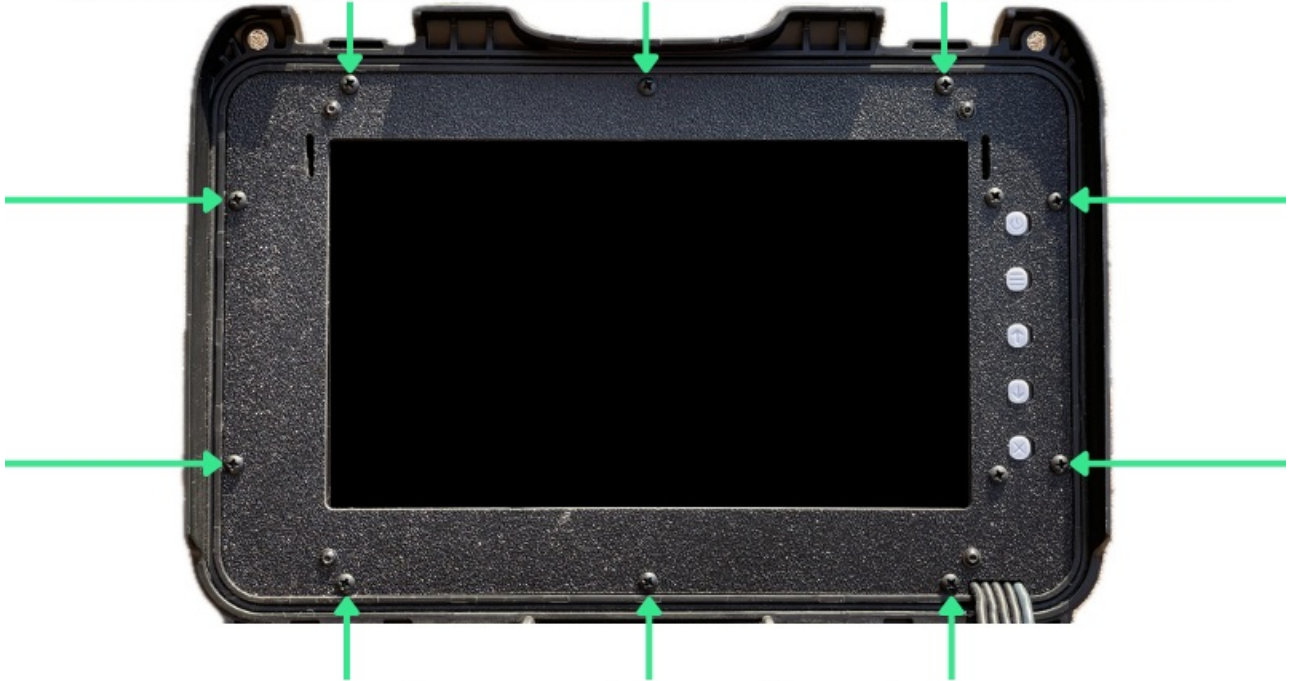
## **Memory Card Upgrade Instructions**

**Warning:** Ensure the device is completely powered off before beginning.

### **Step 1**

With a Phillips (crosshead) screwdriver, remove all 10 arrow-marked screws.

With a Phillips (crosshead) screwdriver, remove all 10 arrow marked screws.



## Remove Front Panel

**Pro Tip:** Place a cloth to protect the front panel while being serviced.

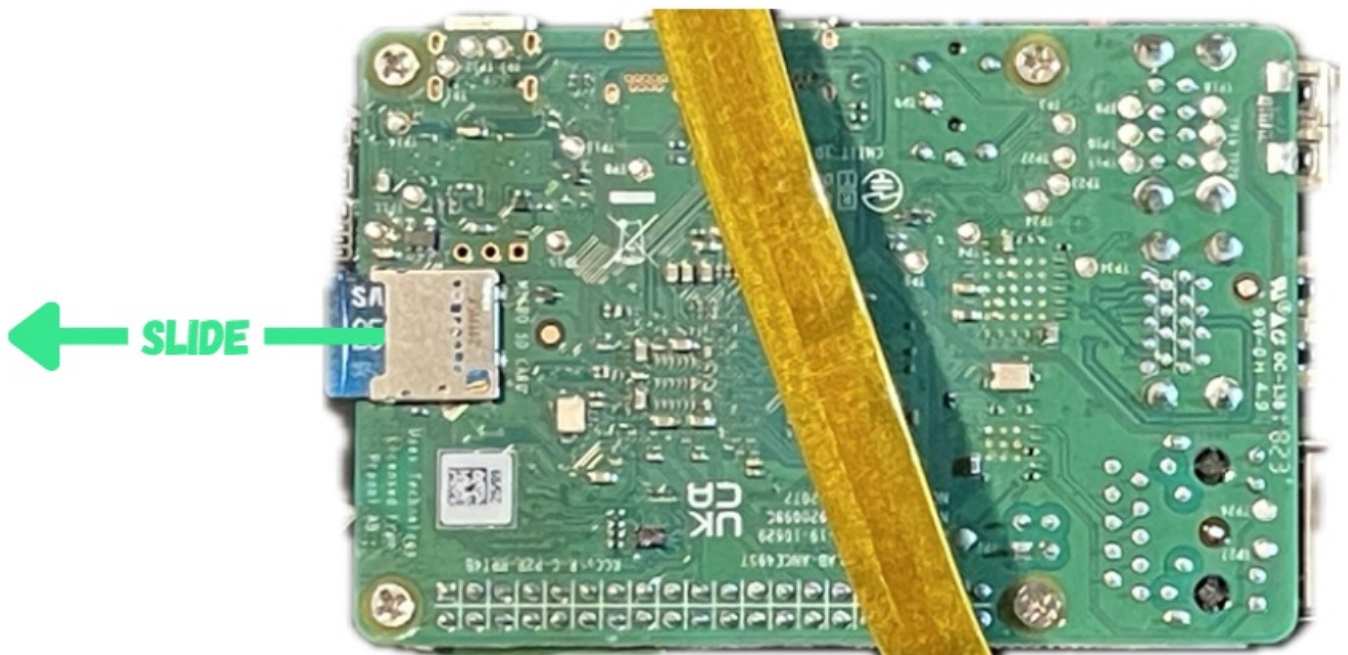
### Remove Front Panel

Pro Tip: Place a cloth to protect the front panel while being serviced.

Pro Tip: Place a cloth to protect the front panel while being serviced.

### Step 2

With the front panel removed locate the micro SD card on the green board. Swap it with your replacement.



### Step 3

Once replaced ensure the Micro SD card is fully seated into the slot as show.



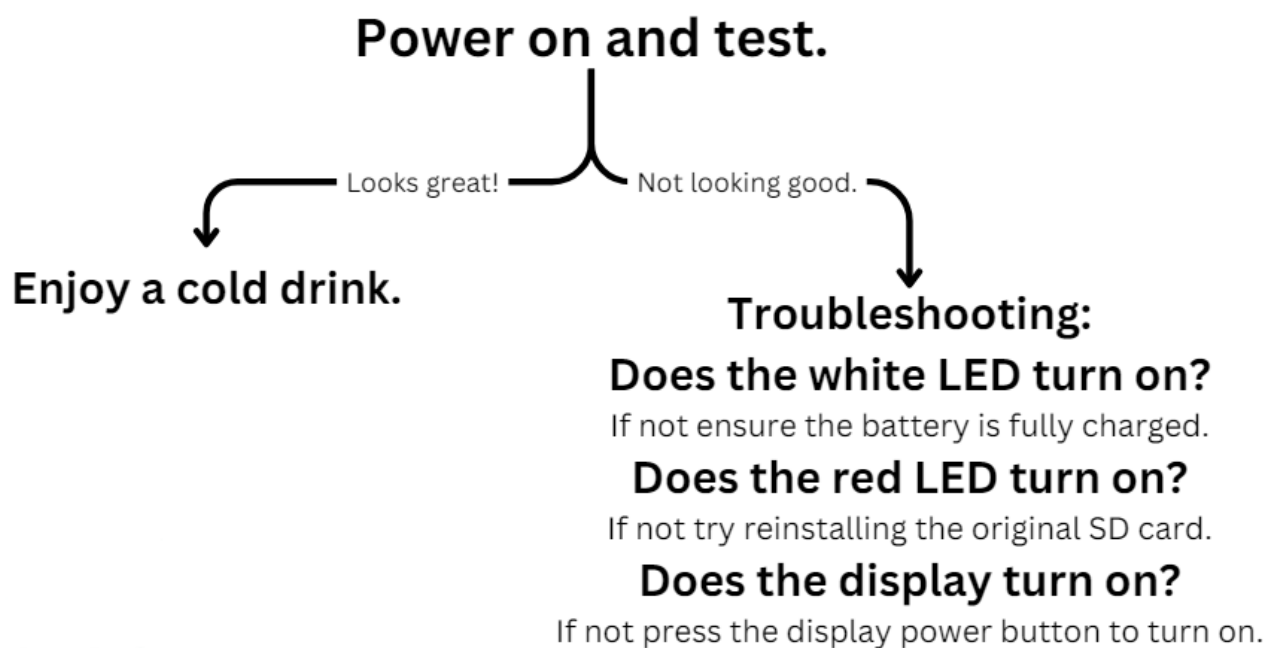
**Pro Tip:** Use some tape on top of the SD card and metal slot in order to prevent it from sliding out over time.

#### Step 4

Route the 5 wires to the slot with an inch of slack on all before placing.  
Reinstall all 10 screws. Hand tight (20 in-lb max).

**Done**

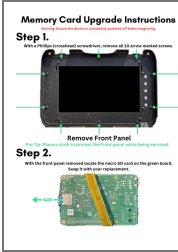
Great Work



Still Stuck? email us: [support@avantgardelabs.co](mailto:support@avantgardelabs.co)

---

**Documents / Resources**



[Avant-Garde Labs DAF4JQ9wbO4 Memory Card Exchange](#) [pdf] Instructions  
DAF4JQ9wbO4 Memory Card Exchange, DAF4JQ9wbO4x, AF4JQ9wbO4 Memory Card Exchange, Card Exchange, Exchange

## References

- [User Manual](#)

[Manuals+](#), [Privacy Policy](#)

This website is an independent publication and is neither affiliated with nor endorsed by any of the trademark owners. The "Bluetooth®" word mark and logos are registered trademarks owned by Bluetooth SIG, Inc. The "Wi-Fi®" word mark and logos are registered trademarks owned by the Wi-Fi Alliance. Any use of these marks on this website does not imply any affiliation with or endorsement.