

## Contents [ [hide](#) ]

- 1 [avalue Technology AMOLED Smartwatch Dames](#)
- 2 [Power On](#)
- 3 [App Download and Pairing](#)
- 4 [Pairing](#)
- 5 [Unbinding the watch from your phone](#)
- 6 [Business card](#)
- 7 [Documents / Resources](#)
  - 7.1 [References](#)

## avalue Technology

### avalue Technology AMOLED Smartwatch Dames

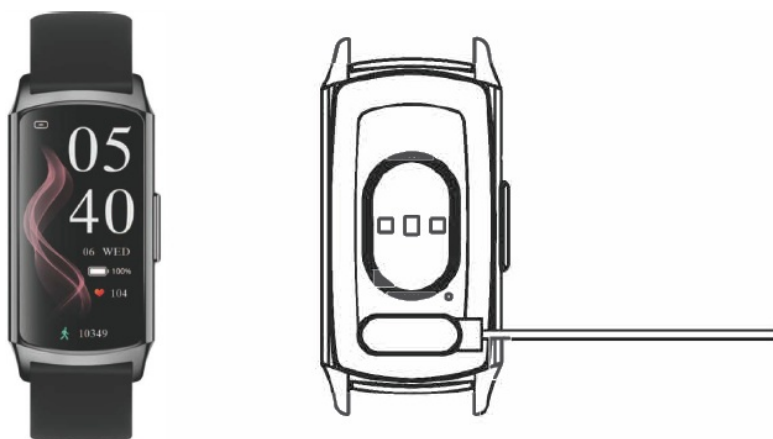


## Specifications

Feature	Details
Charging Time	2 hours
App	Fit Cloud Pro
Device Name	Avalue H76

## Power On

Press and hold the side button to switch the watch on or off.



It takes 2 hours to fully charge the smartwatch.

## App Download and Pairing

### App Download

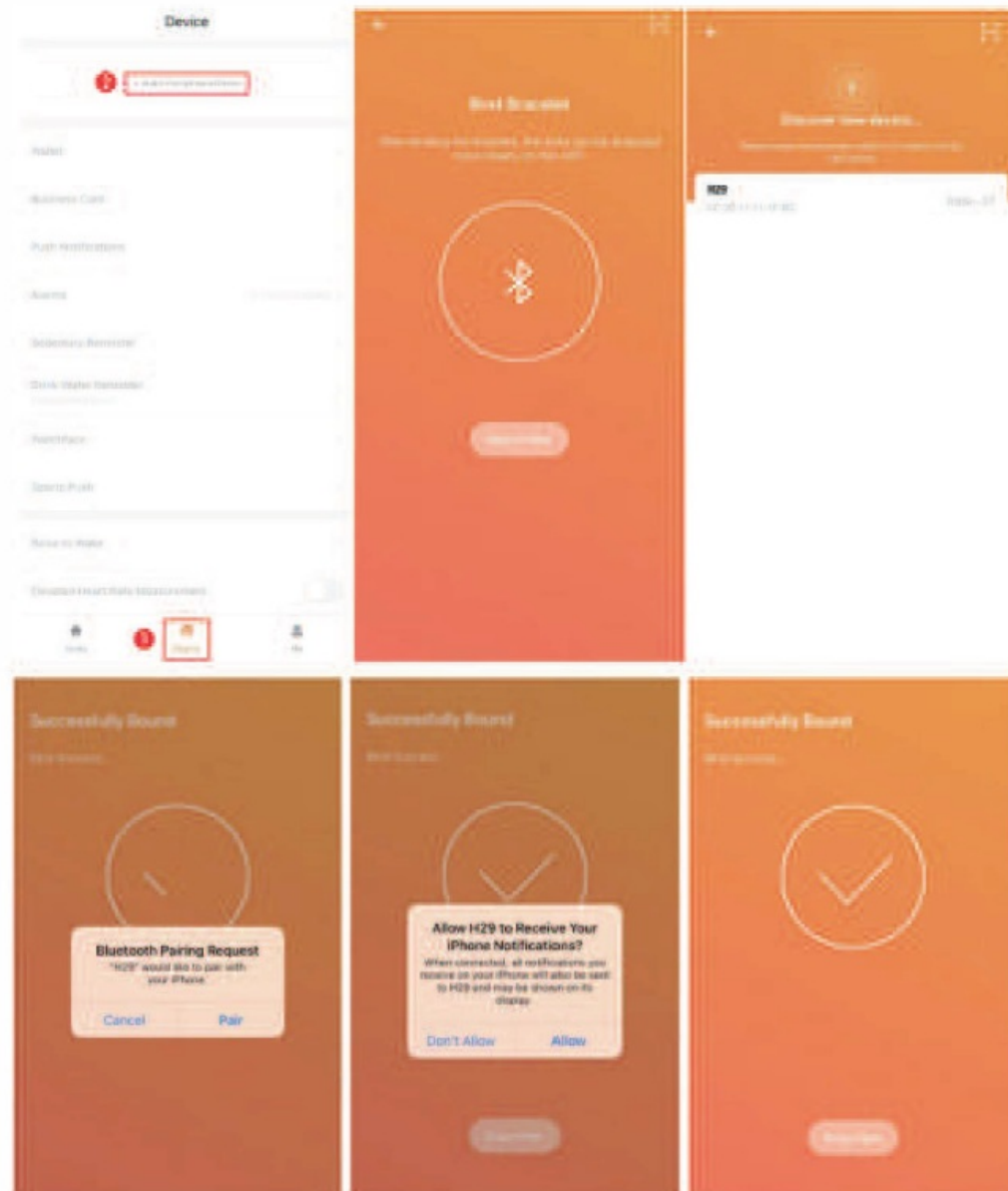
Download and install the “FitCloudPro” app from the App Store, Google Play, or by scanning the QR code below.



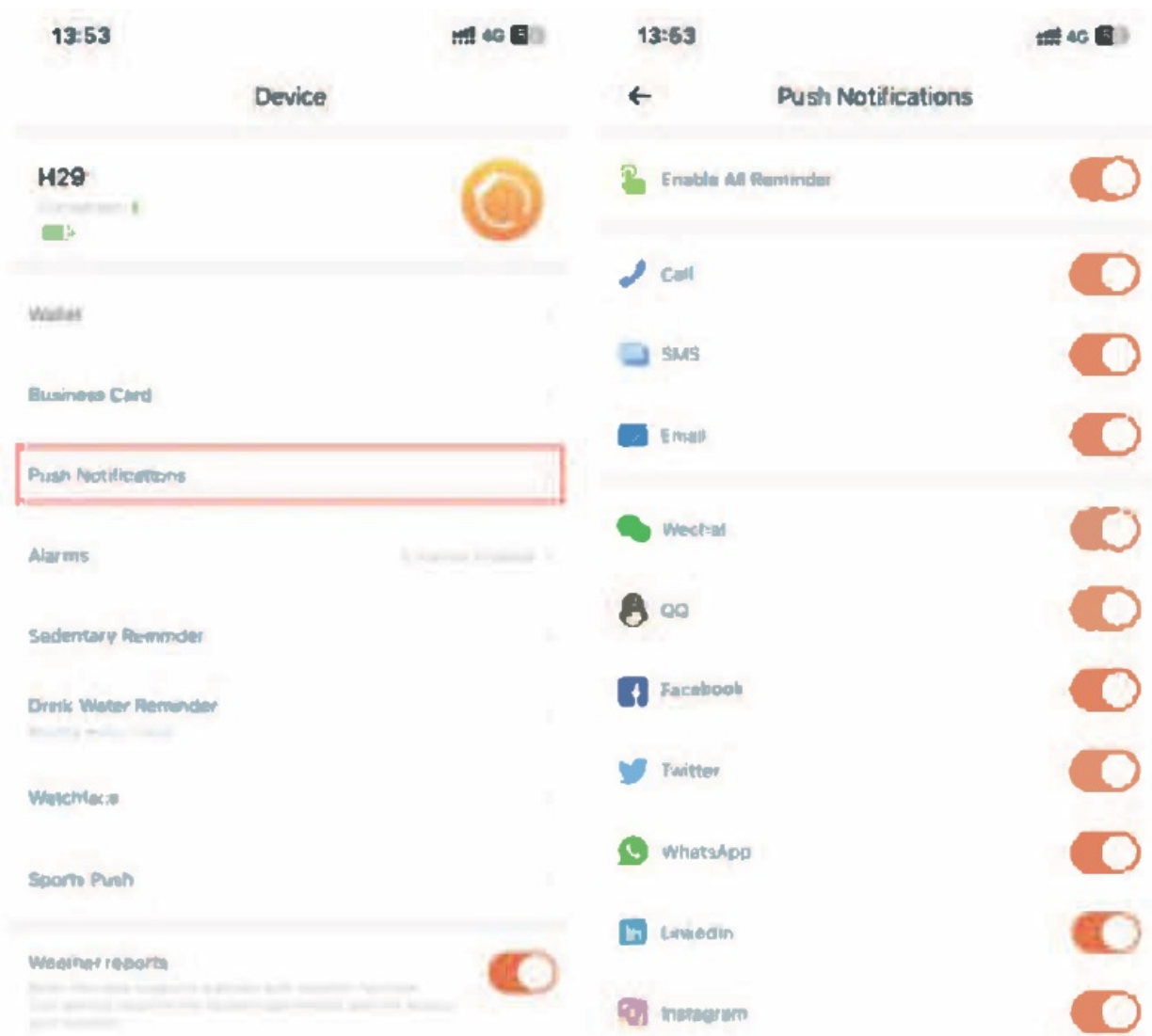
## Pairing

Open “FitCloudPro”, find “Device” and click “+Add peripheral now”. Click “Search Now”, find and select Avalue WT4.

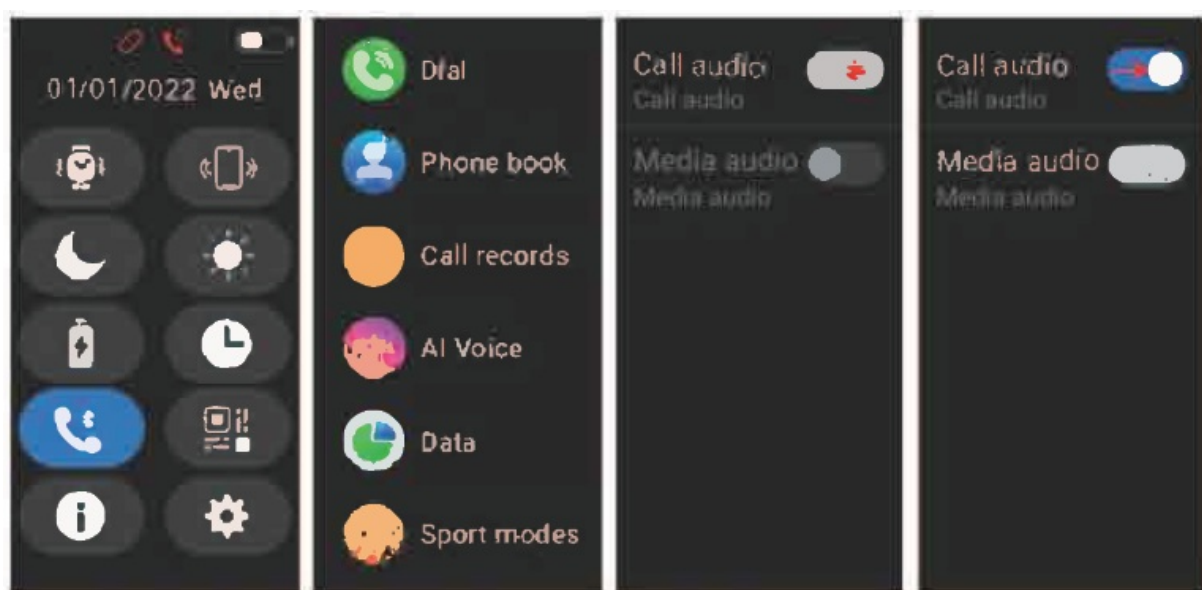
Click “Agree to the phone binding request” on the screen, then click “Pair” to allow the “Bluetooth Pairing Request”. Finally, click “Allow” to permit the device to receive your phone’s notifications. You will now have access to the full features of the watch.



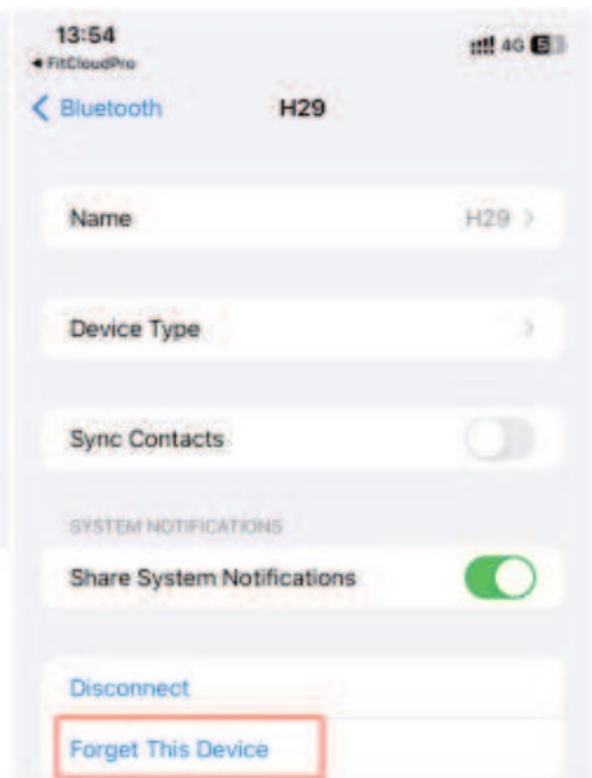
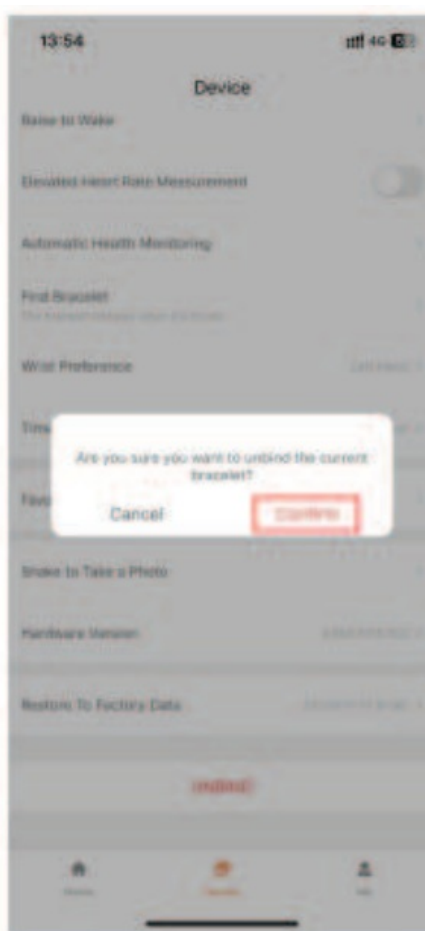
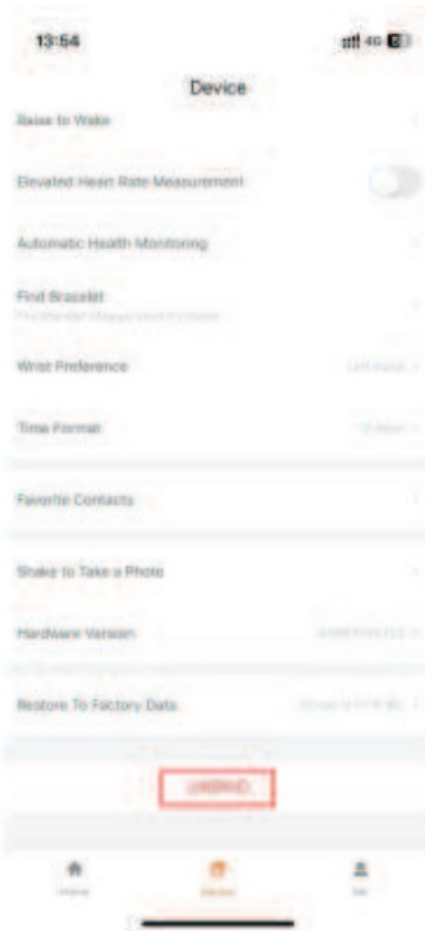
**Enable notifications on your smartwatch through FitCloudPro**



Tap the “phone” icon to enable the watch to make and answer calls, as well as play music from the phone.

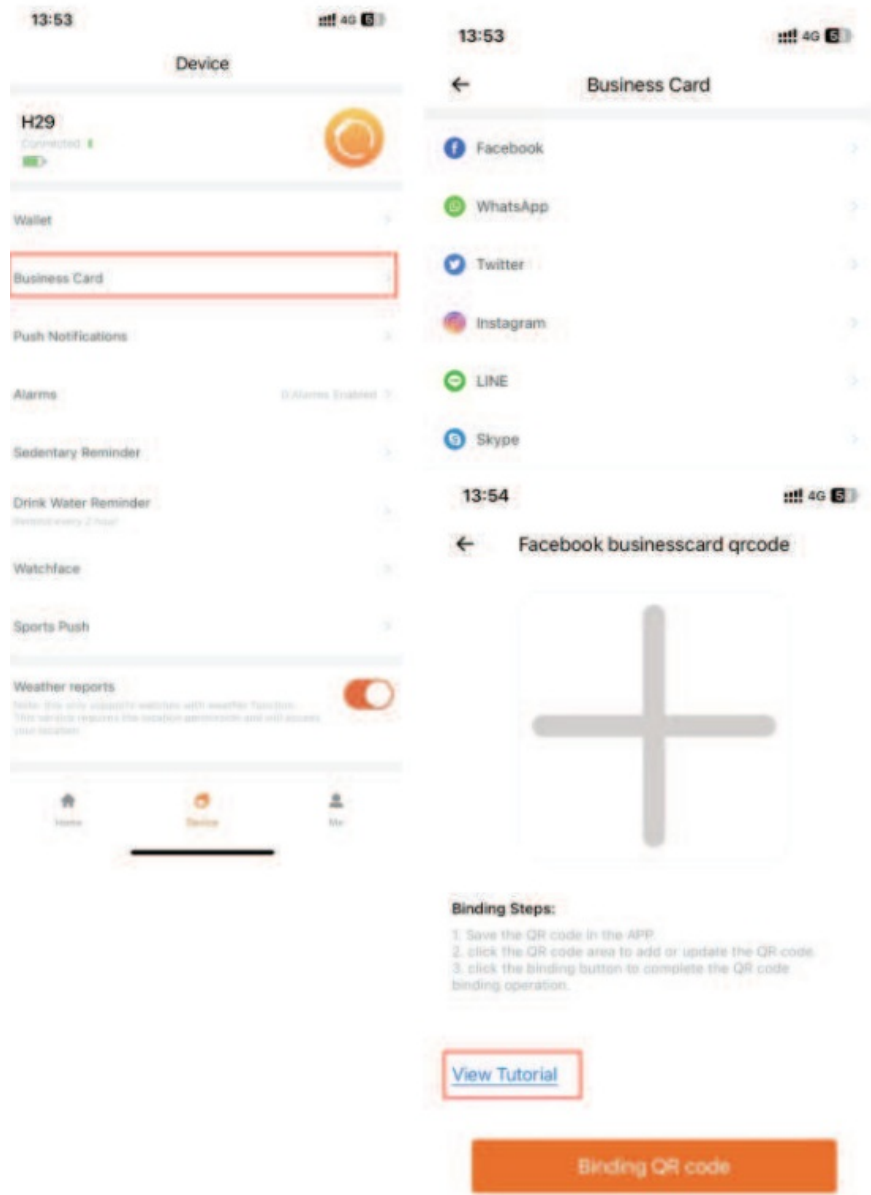


**Unbinding the watch from your phone**



## Business card


Easily upload your business card to the watch for convenient sharing by selecting 'View Tutorial' and following the steps provided.



## Warning

Please consult your doctor before taking up a new sport. The smartwatch should not be used for any medical purposes, even though it can dynamically monitor the heart rate in real time.

## Documents / Resources

	<a href="#">avalue Technology AMOLED Smartwatch Dames [pdf]</a> User Guide AMOLED Smartwatch Dames, Smartwatch Dames, Dames
---	--

## References

- [User Manual](#)

---

## Leave a comment

Your email address will not be published. Required fields are marked \*

Comment \*

Name

Email

Website

☐ Save my name, email, and website in this browser for the next time I comment.

**Post Comment**

**Search:**

**Search**

[Manuals+](#) | [Upload](#) | [Deep Search](#) | [Privacy Policy](#) | [@manuals.plus](#) | [YouTube](#)

This website is an independent publication and is neither affiliated with nor endorsed by any of the trademark owners. The "Bluetooth®" word mark and logos are registered trademarks owned by Bluetooth SIG, Inc. The "Wi-Fi®" word mark and logos are registered trademarks owned by the Wi-Fi Alliance. Any use of these marks on this website does not imply any affiliation with or endorsement.