



autoscript FC-WIRELESS-IP Autocue Wireless Foot Controller Kit User Manual

[Home](#) » [Autoscript](#) » autoscript FC-WIRELESS-IP Autocue Wireless Foot Controller Kit User Manual

Contents [[hide](#)]

- 1 [autoscript FC-WIRELESS-IP Autocue Wireless Foot Controller Kit](#)
- 2 [INFORMATION](#)
- 3 [Package Components](#)
- 4 [Prerequisites for Installation](#)
 - 4.1 [Connecting the components](#)
 - 4.2 [Connect the Wireless Controller and Receiver](#)
- 5 [Troubleshooting](#)
- 6 [Documents / Resources](#)
 - 6.1 [References](#)
- 7 [Related Posts](#)



autoscript FC-WIRELESS-IP Autocue Wireless Foot Controller Kit



Copyright and Trademarks The information in this document is subject to change without notice. This document is intended for the use of Videndum Production Solutions Limited staff, customers or persons having signed an NDA with Videndum Production Solutionslimited for the purpose of the agreement under which the document has been submitted. No part of this document may be reproduced or transmitted in any form or means without the prior written permission of Videndum Production Solutions Limited.

The document has been written to be used by professional and properly trained personnel and the reader assumes full responsibility when using it. Videndum Production Solutions Limited welcomes readers' comments as part of the process of continuous development and improvement of the documentation.

The information or statements given in this document concerning the suitability, capacity or performance of the mentioned hardware or software products cannot be considered binding. However, Videndum Production Solutions Limited has made all reasonable efforts to ensure that the instructions contained in the document are adequate and free of material errors and omissions. Videndum Production Solutions Limited liability for any errors in the document is limited to the documentary correction of errors. Videndum Production Solutions Limited will not be responsible in any event for errors in this document or for any damages, incidental or consequential (including monetary loss), that might arise from the use of this document or the information in it. This document and the product it describes are considered protected by copyright according to applicable laws.

Package Components

The following items comprise the FC/WIRELESS-IP:

- **CON-FC/WIRELESS** Wireless foot controller and receiver



- **G452-006** Ethernet to serial converter, single channel



- **A9009-5009** SRL-CL: Legacy Controller Cable



Prerequisites for Installation

The FC/WIRELESS-IP requires two software packages to operate:

- **WinPlus-IP** The main application is WinPlus-IP. FC/WIRELESS-IP is added to the Devices pane of the WinPlus-IP application and will control the scroll speed of the script.
- **DeviceInstaller** The configuration application for the G452-006 Ethernet to serial converter is from Lantronix and is called DeviceInstaller. It will be used to configure the G452-006 (UDS1100) with the following parameters:
 - **Baud:** 1200
 - **Port** 10001

Connecting the components

First connect the G452-006 (UDS1100) to your network. Connect the included center pin power adapter and plug into mains power. You will see the LED illuminate on the unit. On the 25 pin port, connect the A9009-5009 Legacy Controller Cable. On the 9 pin side of the cable, connect the CON-FC/WIRELESS wireless receiver. Connect the included USB power adapter to the wireless receiver and you will see the LED illuminate on the unit.

Configuring the G452-006 (UDS1100)

Download and install DeviceInstaller from the Lantronix support page:

<https://www.lantronix.com/products/deviceinstaller/> Instructions for setting the Baud Rate and IP address port assignment can be found in the UDS1100 the documentation provided by **Lantronix:**

http://www.lantronix.com/wp-content/uploads/pdf/UDS1100_UG.pdf

Use the Web Manager to set the device IP address if required. If a DHCP assignment is sufficient, proceed to change the port assignment:

Connection Settings

Channel 1

Connect Protocol

Protocol:

Connect Mode

Passive Connection:

Accept Incoming:

Password Required: ☐ Yes ☒ No

Password:

Modem Escape Sequence Pass Through: ☒ Yes ☐ No

Active Connection:

Active Connect:

Start Character: 0x (in Hex)

Modem Mode:

Show IP Address After RING: ☒ Yes ☐ No

Endpoint Configuration:

Local Port:

Remote Port:

☐ Auto increment Local Port for active connect

Remote Host:

Common Options:

Telnet Com Port Cntrl:

Connect Response:

Terminal Name:

Use Hostlist: ☐ Yes ☒ No

LED:

And lastly, set the correct Baud Rate of 1200 in the serial settings:

Channel 1
☐ Disable Serial Port

Port Settings
Protocol:
Baud Rate: Data Bits: Parity: Stop Bits:
Flow Control:

Pack Control
☐ Enable Packing
Idle Gap Time:
Match 2 Byte Sequence: ☐ Yes ☒ No
Match Bytes: (Hex)
Send Frame Immediate: ☐ Yes ☒ No
Send Trailing Bytes: ☒ None ☐ One ☐ Two

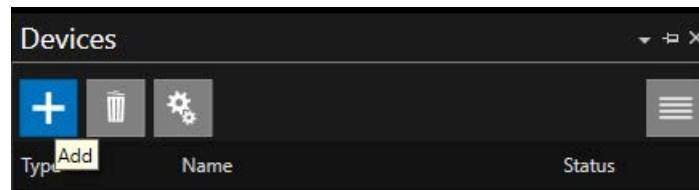
Flush Mode
Flush Input Buffer
With Active Connect: ☐ Yes ☒ No
With Passive Connect: ☐ Yes ☒ No
At Time of Disconnect: ☐ Yes ☒ No
Flush Output Buffer
With Active Connect: ☐ Yes ☒ No
With Passive Connect: ☐ Yes ☒ No
At Time of Disconnect: ☐ Yes ☒ No

OK

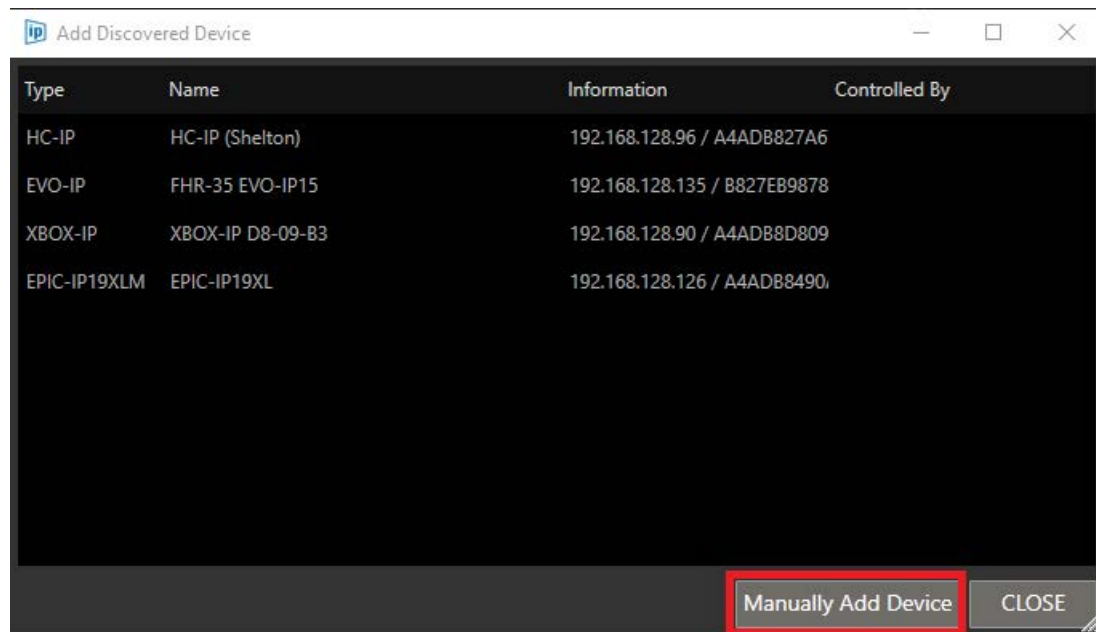
NOTE: To confirm the updated Baud Rate, you must exit and re-enter via Web-Manager

Connect the G452-006 to WinPlus-IP To add the G452-006 Ethernet to Serial adapter (UDS1100) to WinPlus-IP, go to:

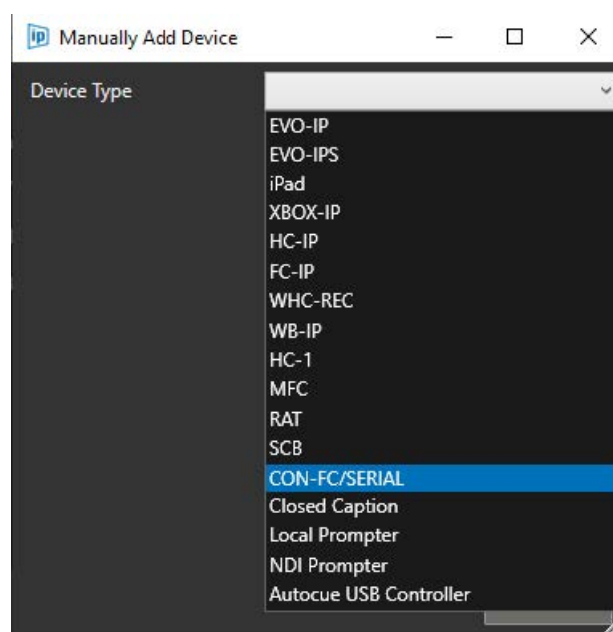
DEVICES pane > Click + to Add



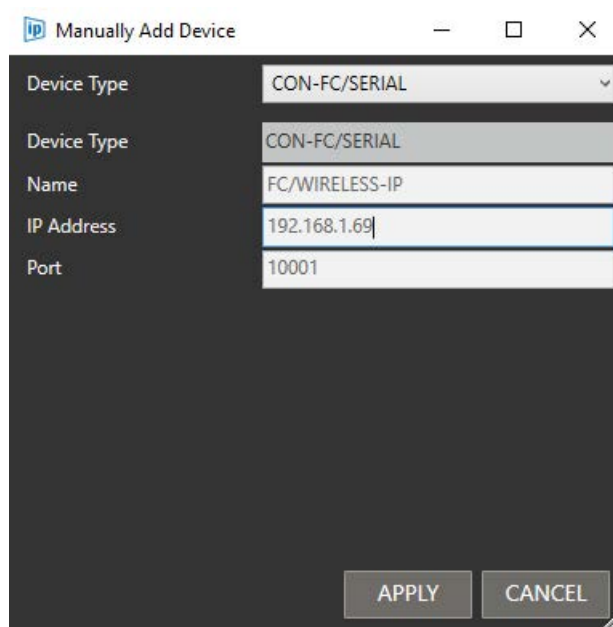
From the Discovered Devices window, click “Manually Add Device”:



Select “CON-FC/SERIAL” from the drop-down menu:



Complete the NAME field, enter the IP address of the G452-006 (UDS1100), and confirm the port assignment(auto-fills to 10001):



Device Type	CON-FC/SERIAL
Device Type	CON-FC/SERIAL
Name	FC/WIRELESS-IP
IP Address	192.168.1.69
Port	10001

APPLY CANCEL

Connect the Wireless Controller and Receiver

The wireless transmitter and receiver are the Handyport HPS-120 and the manual can be downloaded here: <https://www.manualslib.com/manual/1214418/Handywave-Hps-120.html>

To connect the Wireless controller to the Receiver, first put a fully charged 9v battery into the foot controller battery tray:

Then turn the unit on by depressing the power button near the antennae of the unit and the switch will show an ORANGE dot when in the ON position:



The receiver will confirm the units are paired when the LNK light is illuminated GREEN. The receiver will confirm data is being transmitted when the OPR light is flashing RED.



The button actions and scroller sensitivity can be adjusted in the CONFIGURATION window within the device's EDIT window.

Troubleshooting

Here are a list of issues and steps to resolve them:

- **Receiver will not pair with foot controller**
 - Check battery
 - Open foot controller and check transmitter
 - Re-pair transmitter and receiver units (see Handyport HPS-120manual)
- **Battery is dying quickly**
 - The battery is expected to work for 2 hours continuously
 - Rechargeable battery life may be shorter
 - Long distance between the transmitter and receiver will reduce battery life
- **Controller is GREEN in WinPlus-IP, but controller is not working**
 - The GREEN indicator in WinPlus-IP only indicates connection to the G452-006 (UDS1100) Ethernet to serial adapter. Check connection from the adapter to the receiver and the connection between the receiver and the transmitter.

Documents / Resources

	<p>autoscript FC-WIRELESS-IP Autocue Wireless Foot Controller Kit [pdf] User Manual FC-WIRELESS-IP Autocue Wireless Foot Controller Kit, FC-WIRELESS-IP, Autocue Wireless F oot Controller Kit, Wireless Foot Controller Kit, Foot Controller Kit, Controller Kit</p>
---	---

References

- [X Device Installer | Lantronix](#)