



Contents [[hide](#)]

- [1 AUTOOL HTS708 Dry Ice Blasting Machine](#)
- [2 SAFETY RULES](#)
- [3 PRODUCT INTRODUCTION](#)
- [4 Function features](#)
- [5 Technical parameters](#)
- [6 PRODUCT STRUCTURE](#)
- [7 Control panel introduction](#)
- [8 OPERATIONS INSTRUCTION](#)
- [9 COMMON PROBLEMS AND TROUBLESHOOTING](#)
- [10 MAINTENANCE SERVICE](#)
- [11 WARRANTY](#)
- [12 EU DECLARATION OF CONFORMITY](#)
- [13 Frequently Asked Questions](#)
- [14 Documents / Resources](#)
 - [14.1 References](#)
- [15 Related Posts](#)

AUTOOL[®]

AUTOOL HTS708 Dry Ice Blasting Machine



Specifications

- Brand: AUTOOL
- Model: HTS708
- Type: Dry Ice Blasting Machine
- Manufacturer: AUTOOL TECHNOLOGY CO.,LTD
- Website: www.autooltech.com
- Contact: aftersale@autooltech.com / +86-755-2330 4822 / +86-400 032 0988
- Location: Hangcheng Jinchi Industrial Park, Bao'an, Shenzhen, China

COPYRIGHT INFORMATION

Copyright

- All rights reserved by AUTOOL TECH. CO., LTD. No part of this publication may be reproduced, stored in a retrieval system, or transmitted in any form or by any means, electronic, mechanical, photocopying, recording or otherwise, without the prior written permission of AUTOOL. The information contained herein is designed only for the use of this unit. AUTOOL is not responsible for any use of this information as applied to other units.

- Neither AUTOOL nor its affiliates shall be liable to the purchaser of this unit or third parties for damages, losses, costs, or expenses incurred by the purchaser or third parties as a result of: accident, misuse, or abuse of this unit, or unauthorized modifications, repairs, or alterations to this unit, or failure to strictly comply with AUTOOL operating and maintenance instructions.
- AUTOOL shall not be liable for any damages or problems arising from the use of any options or any consumable products other than those designated as original AUTOOL products or AUTOOL approved products by AUTOOL.
- Other product names used herein are for identification purposes only and may be trademarks of their respective owners. AUTOOL disclaims any and all rights in those marks.

Trademark

Manual are either trademarks, registered trademarks, service marks, domain names, logos, company names or are otherwise the property of AUTOOL or its affiliates. In countries where any of the AUTOOL trademarks, service marks, domain names, logos and company names are not registered, AUTOOL claims other rights associated with unregistered trademarks, service marks, domain names, logos, and company names. Other products or company names referred to in this manual may be trademarks of their respective owners. You may not use any trademark, service mark, domain name, logo, or company name of AUTOOL or any third party without permission from the owner of the applicable trademark, service mark, domain name, logo, or company name. You may contact AUTOOL by visiting AUTOOL at <https://www.au-tooltech.com>, or writing to aftersale@autooltech.com, to request written permission to use materials on this manual for purposes or for all other questions relating to this manual.

SAFETY RULES

General safety rules

- Always keep this user manual with the machine.
- Before using this product, read all the operational instructions in this manual. Failure to follow them may result in electric shock and irritation to skin and eyes.
- Each user is responsible for installing and using the equipment according to this user manual. The supplier is not responsible for damage caused by improper use and

operation.

- This equipment must only be operated by trained and qualified personnel. Do not operate it under the influence of drugs, alcohol, or medication.
- This machine is developed for specific applications. The supplier points out that any modification and/or use for any unintended purposes is strictly prohibited.
- The supplier assumes no express or implied warranties or liabilities for personal injury or property damage caused by improper use, misuse, or failure to follow safety instructions.
- This equipment is intended for use by professionals only. Improper use by non-professionals may result in injury or damage to the tools or workpieces.
- Keep out of reach of children.
- When operating, ensure nearby personnel or animals maintain a safe distance. Avoid working in rain, water, or damp environments. Keep the work area well-ventilated, dry, clean, and bright.

Handling

- Used/damaged equipment must not be disposed of in household waste but must be disposed of in an environmentally friendly manner. Use designated electrical equipment collection points.
- Discarded dry ice can be placed in a dedicated dry ice recycling container or disposed of in an outdoor area with sufficient space.

Electrical safety rules

- This is a Class I equipment and must be powered through an electrical outlet with a protective grounding conductor. This connection must not be interrupted at any point (e.g., through an extension cord). Any interruption or disconnection of the protective conductor may result in electric shock. Therefore, ensure that the equipment/casing is properly grounded beforehand.
- Do not twist or severely bend the power cord, as this may damage the internal wiring. If the power cord shows signs of damage, do not use the dry ice blasting machine. Damaged cables pose a risk of electric shock. Keep the power cord away from heat sources, oil, sharp edges, and moving parts. Damaged power cords must be replaced

by the manufacturer, its technicians, or personnel with similar qualifications to prevent hazardous situations or injuries.

Equipment safety rules

- Never leave the equipment unattended while it is operating. Always turn off the equipment at the main switch and disconnect the power cord when the equipment is not being used for its intended purpose!
- Do not attempt to repair the equipment yourself.
- Before connecting the equipment to power, check that the battery voltage matches the value specified on the nameplate. Mismatched voltage can cause serious hazards and damage the equipment.
- It is essential to protect the equipment from rainwater, moisture, mechanical damage, overload, and rough handling.

Application

- Before use, check the power cord, connection hoses, and adapters for any damage. Do not operate the equipment if any damage is found.
- Use the equipment only in compliance with all safety instructions, technical documents, and vehicle manufacturer specifications.
- If additional dry ice pellets are needed, use only brand- new and unopened products.

Personnel protection safety rules

- The dry ice pellets used by the machine may be harmful to health, and any contact must be avoided.
- When using dry ice blasting machine to clean carbon deposits from equipment, always wear protective goggles to prevent potential splashes from hitting your eyes. If you are hit, rinse the affected area with flowing water while
- keeping your eyes open. If symptoms persist, consult a doctor.
- Always wear protective gloves while working to avoid skin contact with dry ice pellets or contamination from dirt. If swallowed, seek medical advice immediately.
- Always ensure you have a stable footing to safely control equipment in case of emergencies.

CAUTIONS

Warning

Before using the instrument, please read this manual carefully for proper operation.

- If cleaning moving objects, firstly be sure to turn off the drive power of the objects to be cleaned.
- The temperature of dry ice is -78.5 degrees, and gloves must be worn for long-term contact with dry ice to prevent burns.
- The object to be cleaned and sprayed contains a lot of dust, so be sure to wear a protective mask.
- The spray head shall not against people, and the dry ice particles sprayed will hurt people.
- Cleaning with dry ice will produce certain noise, and it is necessary to wear noise-proof earmuffs during operation.
- It is forbidden to touch dry ice and the barrel of ice spraying gun.
- When adding dry ice, it must be kept clean and no other foreign objects fall into the equipment.
- This equipment uses solid CO₂ particles, and ventilation must be ensured when operating dry ice cleaning.
- Before working, it is necessary to check whether goggles, earmuffs, work clothes and gloves are worn.
- Before each operation, first set the ice feeding speed to “0” and test whether there is condensed water sprayed from the nozzle.
- When the operation is not finished and suspended, please adjust the ice feeding speed to “0” , and then start the spray gun to spray for 30-50s to ensure that the residual ice in the feeding pipe is discharged and prevent ice blocking.
- To ensure that the compressed air pressure flow of the air source is sufficient, please choose the air source supply pipe with an outer diameter greater than DN20 and an air source pressure greater than 6bar, so as to achieve better cleaning effect.
- To prevent electric shock, please do not touch the working equipment in the wet place or operate the equipment in the rain.
- In case of equipment failure during operation, the power supply shall be disconnected immediately.

PRODUCT INTRODUCTION

Overview

- Dry ice cleaning uses compressed air as power to spray dry ice particles to the surface of the cleaned object at supersonic speed. However, it does not rely solely on the kinetic energy of dry ice particles, but uses the ultra-low temperature performance of dry ice to achieve the purpose of decontamination.
- Dry ice spraying medium – dry ice particles accelerate in the high-pressure air flow and impact the surface to be cleaned. The unique feature of dry ice cleaning is that the dry ice particles are vaporized at the moment during cleaning, and the momentum of dry ice disappears at the moment of impact. The heat exchange between dry ice particles and the cleaning surface occurs rapidly, resulting in the rapid sublimation of solid CO₂ into gas, and the volume expansion of dry ice particles is nearly 800 times within a few thousandths of a second, thus causing “micro explosion” at the impact point. Due to the volatilization of CO₂, no secondary waste is generated during the dry ice cleaning process, and only the dirt that needs to be cleaned.
- Any other use is considered beyond the intended purpose of the equipment and is prohibited.

Applicable industry field

Dry ice blasters are suitable for removing stuck and flaking formulations, silicone and rubber residues, oils, greases, turpentine, asphalt, dirt, inks, resins, adhesives, waxes and paints, chewing gum, and graffiti. It has been widely used in rubber, casting, automobile, marine, electric power, chemical, printing, plastic, food, pharmaceutical and aviation fields.

Function features

- **Effective cleaning equipment for improving productivity.**

The main function of the dry ice blasters is to clean different equipment. On the one hand, dry ice cleaning can avoid the impact of shutdown on production, and at the same time, it can reduce the disassembly and damage of equipment, fundamentally protect the equipment and improve productivity.

- **Avoid personal injury caused by hazardous substances.**

Cleaning with dry ice instead of toxic chemical to avoid long-term adhesion of undesirable substances to the equipment, affecting the overall operation and causing injury to personnel.

- **Quickly remove all kinds of intractable dirt.**

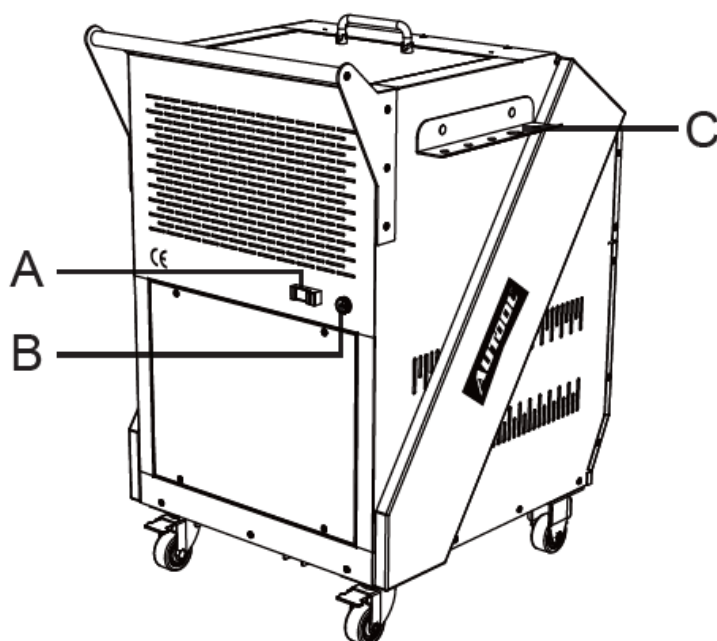
The use of dry ice blaster can thoroughly remove the attached dirt and protect the equipment to avoid affecting the operation and use of the equipment during cleaning.

Technical parameters

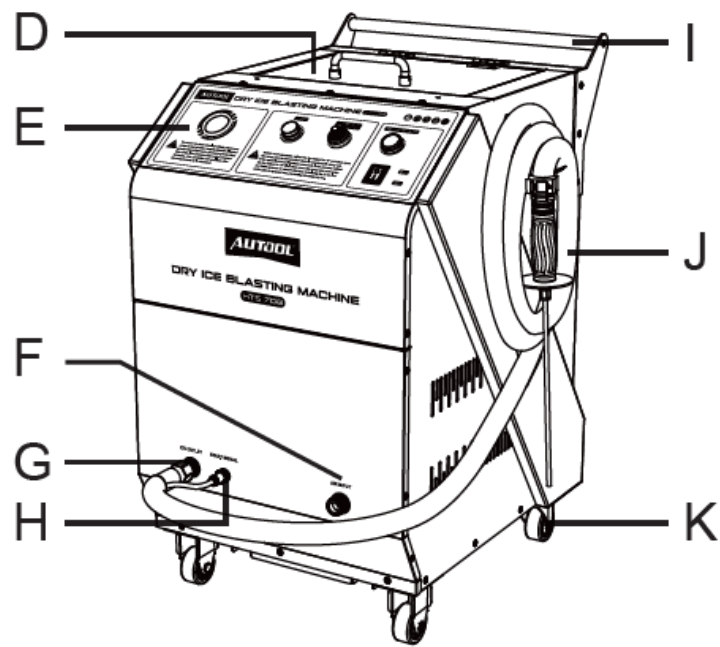
Power Supply	110V/220V
Dry Ice Volume	7.5kg
Compressed Air Flow	>1~3m ³ /min
Dry Ice Particle State	3mm
Air Supply Pressure	0.3~1.0Mpa
Dry Ice Blasting Volume (Adjustable)	0~3.2kg/min

PRODUCT STRUCTURE

Machine structure

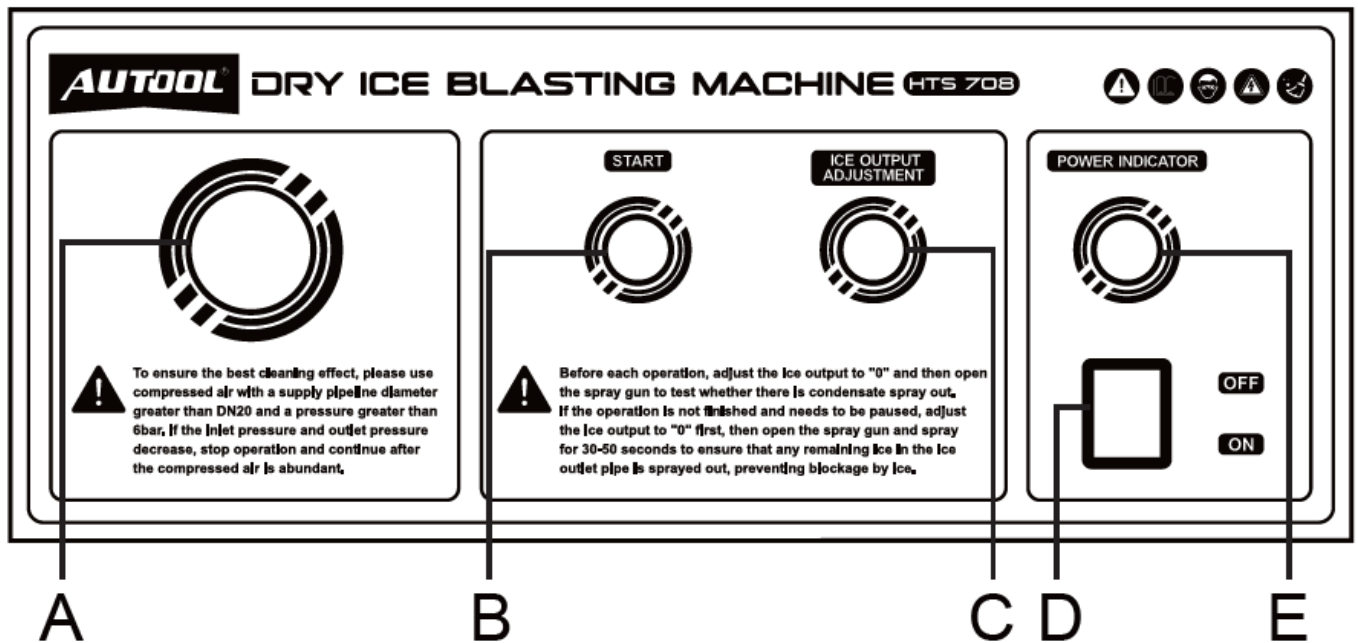


A	Fuse	B	Power cord
C	Fittings bracket		



D	Dry ice tank	E	Control panel
F	Air source interface	G	Dry ice outlet
H	Signal interface	I	Handle
J	Ice spray gun	K	Caster

Control panel introduction



A	Pressure gauge	B	Start controller
C	Dry ice volume adjustment controller	D	Power switch
E	Power indicator light		

OPERATIONS INSTRUCTION

Equipment debugging

- Connect the host to the external air source and external power supply. Check whether the data of the air pressure indicator is normal and whether the power connection is normal (make sure the power supply is grounded normally).
- Make preparations for testing machine, including connecting the machine and accessories properly, checking whether the parts are loose, and cleaning the unnecessary items placed on the machine body or the work area.
- Turn on the power switch, then turn it to start mode first. And then press the start switch on the handle to run, adjust the dry ice volume from 0 to its maximum, check whether there is any abnormality, and then put dry ice materials into the machine for trial operation.

Adjusting the volume of dry ice blasting

- Add an appropriate volume of dry ice and cover the lid.
- According to the required cleaning degree, turn the dry ice volume adjusting controller to achieve the best effect as needed (it is recommended to set it to “5” first and adjust it according to the cleaning effect).
- If the barrel with smaller inner diameter is adopted, it is recommended to set it to “3” and then increase it as appropriate.
- After confirmation, align the spray gun with the parts to be cleaned, and press the start switch on the handle to enter the cleaning procedure.

Final work

- Turn the dry ice volume adjusting controller to “0” and start the spray gun to spray for 30-50s until no water is sprayed.
- The dry ice residue can be removed by extending the product’s spraying time, and manual cleaning is required if necessary.
- Turn off the power switch, disconnect the air source, and store the spray gun and accessories.

COMMON PROBLEMS AND TROUBLESHOOTING

Common faults

Analysis and treatment method:

- The ice is blocked in the ice hopper in the dry ice box.
- Stop the operation, open the cover, and check if there is excessive dry ice filled. If so, remove some dry ice, and then continue the operation.
- Check whether the vibration pump works. If not, contact the manufacturer for replacement.
- When filling dry ice into the funnel, it instantly removes the air inside the funnel and forms condensation blocks. It requires manual assistance using a steel rod at the center of the funnel to fill the dry ice.

Common faults

Analysis and treatment method:

- The dry ice pipe is vented but does not discharge ice (internal ice blockage).
- During the operation, intermittent use or intermittent shutdown can cause the residual dry ice and compressed air mixed in the ice outlet pipe, leading to icing. If this situation occurs: first adjust the ice output to 0, then turn on the spray gun switch and keep it running continuously for 3 minutes, then adjust the ice output to 20%-30%, and then observe the ice output effect.

Common faults

Analysis and treatment method:

- The dry ice pipe leaks ice and air.
- Check the air source to ensure that the compressed air supplied to the dry ice blaster is free of oil and water.
- The dry ice pipe has been used for a long time, and the dry ice has been rubbing against the pipe wall for a long time, resulting in the internal thinning. Contact the manufacturer for replacement.

Common faults

Analysis and treatment method:

- The cleaning effect is not perfect, carbon deposits and other intractable stains are not cleaned thoroughly.
- If the cleaning is not complete, first check whether the air pressure and flow of the external air source are insufficient. The working pressure of the dry ice machine is not less than 6bar and the flow rate is not less than 1m³/min.
- If the air supply pipe is too thin, too long, or directly connected to the quick interface, it will cause the pressure of the pipeline to drop too much. In this case, it is considered to directly connect the blaster to the main air supply pipe before operation.

MAINTENANCE SERVICE

Our products are made of long-lasting and durable materials, and we insist on perfect production process. Each product leaves the factory after 35 procedures and 12 times of testing and inspection work, which ensures that each product has excellent quality and performance.

Maintenance

To maintain the performance and appearance of the product, it is recommended that the following product care guidelines be read carefully

- Be careful not to rub the product against rough surfaces or wear the product, especially the sheet metal housing.
- Please regularly check the product parts that need to be tightened and connected. If found loose, please tighten it in time to ensure the safe operation of the equipment. The external and internal parts of the equipment in contact with various chemical media should be frequently treated with anti-corrosion treatment such as rust removal and painting to improve the corrosion resistance of the equipment and extend its service life.
- Comply with the safe operating procedures and do not overload the equipment. The safety guards of the products are complete and reliable.
- Unsafe factors are to be eliminated in time. The circuit part should be checked thoroughly and the aging wires should be replaced in time.
- Adjust the clearance of various parts and replace worn (broken) parts. Avoid contact with corrosive liquids.
- When not in use, please store the product in a dry place. Do not store the product in hot, humid, or non-ventilated places.

WARRANTY

From the date of receipt, we provide a three-year warranty for the main unit and all the accessories included are covered by a one-year warranty.

Warranty access

- The repair or replacement of products is determined by the actual breakdown situation of product.
- It is guaranteed that AUTOOL will use brand new component, accessory or device in terms of repair or replacement.
- If the product fails within 90 days after the customer receives it, the buyer should provide both video and picture, and we will bear the shipping cost and provide the accessories for the customer to replace it free of charge. While the product is received

for more than 90 days, the customer will bear the appropriate cost and we will provide the parts to the customer for replacement free of charge.\

These conditions below shall not be in warranty range

- The product is not purchased through official or authorized channels.
- The product breakdown because the user does not follow product instructions to use or maintain the product.

We AUTOOL pride ourselves on superb design and excellent service. It would be our pleasure to provide you with any further support or services.

Disclaimer

All information, illustrations, and specifications contained in this manual, AUTOOL reserves the right of modify this manual and the machine itself with no prior notice. The physical appearance and color may differ from what is shown in the manual, please refer to the actual product. Every effort has been made to make all descriptions in the book accurate, but inevitably there are still inaccuracies, if in doubt, please contact your dealer or AUTOOL after-service centre, we are not responsible for any consequences arising from misunderstandings.

RETURN & EXCHANGE SERVICE

Return & Exchange

- If you are an AUTOOL user and are not satisfied with the AUTOOL products purchased from the online authorized shopping platform and offline authorized dealers, you can return the products within seven days from the date of receipt; or you may exchange it for another product of the same value within 30 days from the date of delivery.
- Returned and exchanged products must be in fully saleable condition with documentation of the relevant bill of sale, all relevant accessories and original packaging.
- AUTOOL will inspect the returned items to ensure that they are in good condition and eligible. Any item that does not pass inspection will be returned to you and you will not

receive a refund for the item.

- You can exchange the product through the customer service center or AUTOOL authorized distributors; the policy of return and exchange is to return the product from where it was purchased. If there are difficulties or problems with your return or exchange, please contact AUTOOL Customer Service.

China	400-032-0988
Oversea Zone	+86 0755 23304822
E-mail	aftersale@autooltech.com
Facebook	https://www.facebook.com/autool.vip
YouTube	https://www.youtube.com/c/autooltech

EU DECLARATION OF CONFORMITY

We as the manufacturer declare that the designated product:


Engine De-Carbon Cleaner Machine (HTS708)

Complies with the requirements of the:

- EMC Directive 2014/30/EU
- RoHS Directive 2011/65/EU + 2015/863 + 2017/2102

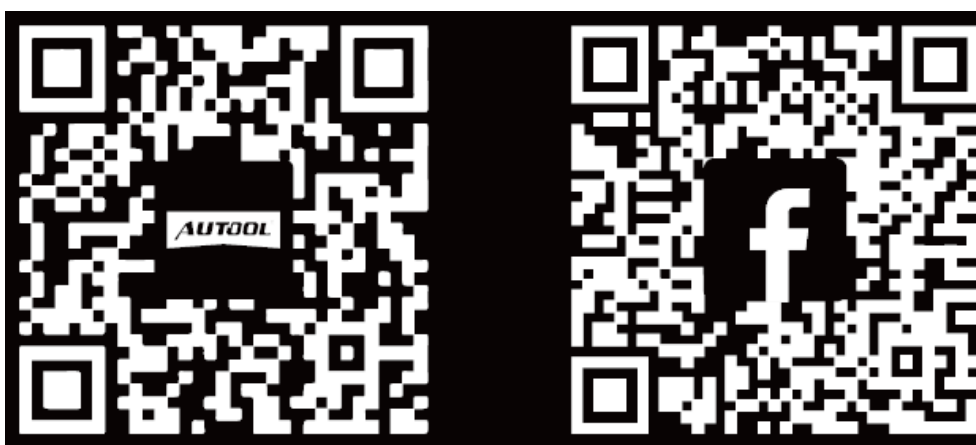
Applied Standards:

- EN IEC 55014-1:2021, EN IEC 55014-2:2021, EN IEC
- 61000-3-2:2019+A1:2021, EN 61000-3-3:2013+A1:2019+A2:2021
- IEC 62321-3-1:2013, IEC 62321-5:2013, IEC 62321-4:2013+A1:2017, IEC 62321-7-1:2015
- IEC 62321-7-2:2017, IEC 62321-1:2013, IEC 62321-6:2015, IEC 62321-8:2017
- **Certificate No.:** ZHT-231019006C, ZHT-231019008C
- **Test Report No.:** ZHT-231019006E, ZHT-231019008R

Manufacturer	Shenzhen AUTOOL Technology Co, Ltd.
	Floor 2, Workshop 2, Hezhou Anle Industrial Park, Hezhou Community, Hangcheng Street, Bao 'an District, Shenzhen Email: aftersale@autooltech.com
	COMPANY NAME: XDH Tech
	ADRESS: 2 Rue Coysevox Bureau 3, Lyon, France E-Mail: xdh.tech@outlook.com CONTACT PERSON: Dinghao Xue

AUTOOL TECHNOLOGY CO.,LTD

- www.autooltech.com
- aftersale@autooltech.com
- +86-755-2330 4822 / +86-400 032 0988
- Hangcheng Jinchi Industrial Park, Bao'an, Shenzhen,China




Frequently Asked Questions

- **Q: Can I use any type of dry ice with this machine?**
 - A: It is recommended to use dry ice specifically designed for dry ice blasting machines to ensure optimal performance and safety.

- **Q: How often should I clean the machine?**

- A: Regular cleaning after each use is recommended to prevent any build-up that may affect the machine's performance. Refer to the maintenance section for detailed cleaning instructions.

Documents / Resources

	AUTOOL HTS708 Dry Ice Blasting Machine [pdf] User Manual HTS708, SDT101, HTS708 Dry Ice Blasting Machine, HTS708, Dry Ice Blasting Machine, Ice Blasting Machine, Blasting Machine, Machine
---	--

References

- [Tool Tech](#)
- [autooltech.com](#)
- [User Manual](#)

Related Posts

Both
th Lighting
/ Ice Fog
achine



[Both Lighting Dry Ice Fog Machine User Manual](#)

Both Lighting Dry Ice Fog Machine Thank you for purchasing our product! Please kindly read the manual carefully...



[Avantco 194CDIM50 Countertop Dry Ice Machine User Manual](#)

Avantco 194CDIM50 Countertop Dry Ice Machine
Warning and Safety WARNING: This product works with

liquid CO2 only, do...

[BROMIC IM0050HSC-HE Ice Machine Hollow Ice Instructions](#)

BROMIC IM0050HSC-HE Ice Machine Hollow Ice PRODUCT DESCRIPTION

NS Model IM0050HSC-HE Part Number 3935361 Unit Weight 45kg



Packaged...



[BROMIC IM0084HSC-HE Ice Machine Hollow Ice Instructions](#)

BROMIC IM0084HSC-HE Ice Machine Hollow Ice

INSTRUCTION Hollow Cube - 63kg/24h - 20kg Capacity

Ice Machines DIMENSION SPECIFICATIONS...

■ AUTOOL

◆ AUTOOL, Blasting Machine, Dry Ice Blasting Machine, HTS708, HTS708 Dry Ice Blasting Machine, Ice Blasting Machine, Machine, SDT101

—Previous Post

[AUTOOL PT620 Oil Pressure Gauge Kit User Manual](#)

Next Post—

[AUTOOL HTS678 Walnut Sand De Carbon Cleaner User Manual](#)

Leave a comment

Your email address will not be published. Required fields are marked *

Comment *

Name

Email

Website

☐ Save my name, email, and website in this browser for the next time I comment.

Post Comment

[Manuals+](#), [Privacy Policy](#) | [@manuals.plus](#) | [YouTube](#)

This website is an independent publication and is neither affiliated with nor endorsed by any of the trademark owners. The "Bluetooth®" word mark and logos are registered trademarks owned by Bluetooth SIG, Inc. The "Wi-Fi®" word mark and logos are registered trademarks owned by the Wi-Fi Alliance. Any use of these marks on this website does not imply any affiliation with or endorsement.