



AUTOOL CS603 Obdii V3.2 Obd2 Scanner Reader User Manual

[Home](#) » [AUTOOL](#) » AUTOOL CS603 Obdii V3.2 Obd2 Scanner Reader User Manual 

Contents

- [1 AUTOOL CS603 Obdii V3.2 Obd2 Scanner Reader](#)
- [2 Technical Specifications](#)
- [3 Standard Accessory Kits](#)
- [4 Port Definition & Keys Definitions](#)
- [5 Main Menu](#)
- [6 Diagnose – Region Selection](#)
- [7 Diagnose – Control Unit](#)
- [8 Special Function](#)
- [9 About](#)
- [10 OBDII Function](#)
- [11 Setting](#)
- [12 FAQ](#)
- [13 Warranty](#)
- [14 Update Instructions and Procedures](#)
- [15 Copyright Information](#)
- [16 Documents / Resources](#)
 - [16.1 References](#)
- [17 Related Posts](#)

AUTOOL[®]

AUTOOL CS603 Obdii V3.2 Obd2 Scanner Reader



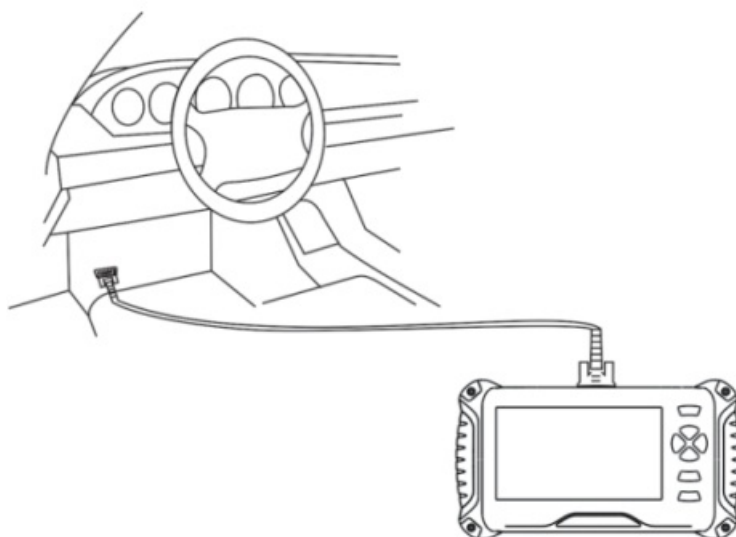
Technical Specifications

1	Screen Display	7" Color
2	Dimension (LxWxH)	24x16x11cm
3	Gross Weight	0.85kg
4	OS Platform	Linux
5	Card Memory	16G
6	Input Voltage	DC 12V

Standard Accessory Kits

1	Nylon tool bag
2	CS603 / CS605 / CS606 main unit
3	Main cable with OBDII-16
4	USB cable
5	User Manual

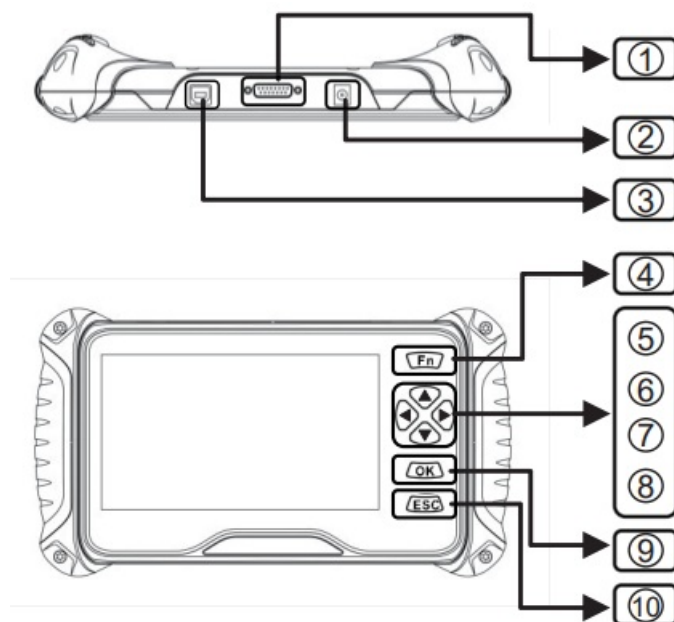
Cable Connection for On-Board Diagnosis



Connection

To connect the CS603 / CS605 / CS606 main unit with the main cable to get power supply from the car via OBDII-16 connector

Port Definition & Keys Definitions



1	For main cable connection	2	Charging port
3	For USB connection	4	FN Key
5	Up button	6	Down button
7	Left button	8	Right button
9	OK button	10	ESC button

FN Key (3-in-1 Functions defined)

• FN #1 : Selection

Press FN key to select the items in live data function. After pressing OK, the live data will be displayed in graphic.

IGN RUN START SW	ON
IGN STSRT SW	OFF
Ignition Start Switch Filter Switch State	OFF
√ MAP Vacuum	0.00 (in Hg)
√ Map Volts	4.92 (Volts)

- FN #2 : Show/Hide keyboard**

Press FN key to show or hide the keyboard .

Input Channel Number													
0	1	2	3	4	5	6	7	8	9		BACK		
Q	W	E	R	T	Y	U	I	O	P		ENTER		
A	S	D	F	G	H	J	K	L)	–		UP	
Z	X	C	V	B	N	M	/	*	(–	LE	DN	RI
abc			SPACE										

- FN #3: Shift operation area**

Different operation areas can be switched among each other by pressing the FN key during the special testing.

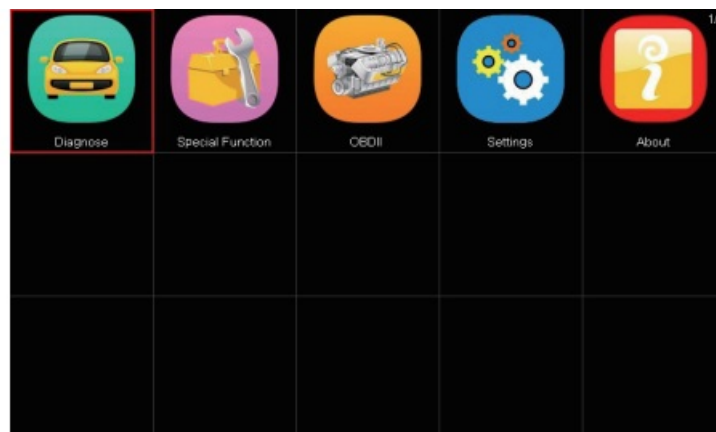
Auto Shutdown (ASD) Relay				
Auto Shutdown (ASD) Relay Control State				
Off			F1	
On			F2	
Toggle			F3	
BACK		F1		F2

Press FN key, the display area will be highlighted as above, Press the up and down button to view more information.

Auto Shutdown (ASD) Relay				
Auto Shutdown (ASD) Relay Control State				
Off			F1	
On			F2	
Toggle			F3	
BACK		F1		F2

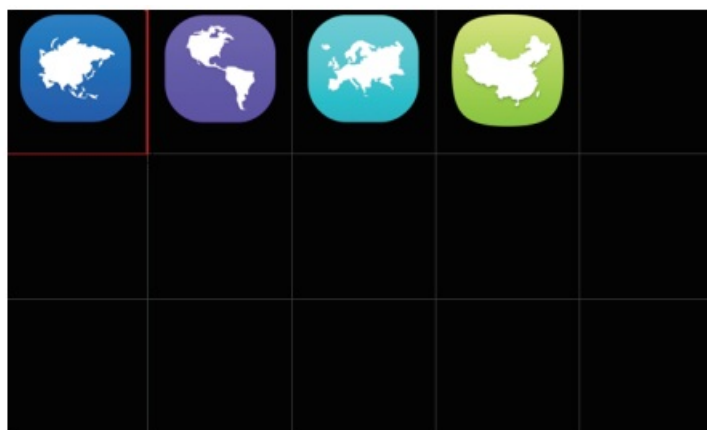
Press FN key, the function area will be highlighted as above, Press the left and right button to actuate more test.

Main Menu



- Diagnose: To access specific diagnosis function directly base on selection of the areas as well as the car makes.
- Special Functions : To provide 5 common use service resets for the professional workshop repairs.
- OBDII V3.0 : 10 modes of OBDII test for cars after1996 and newer including read/erase codes, view live data, view freeze frame data, view I/M readiness, O2 monitor test etc.
- Settings : To provide the system setting, including Language , logging, unit setting and Bluetooth setting.
- Update : To access online software update for full coverage. Internet update via WI-FI
- About : To provide the system information menu.

Diagnose – Region Selection



Diagnose – Vehicle Coverage



Diagnose – Vehicle Coverage

Please note that the VT100 is a vehicle-specific car diagnostic tool. Therefore, it only supports vehicles of a specific car group, which depends on the pre-in-stalled car brand software. For the blank version machine, please contact us to install your selected car brand software.

American	Vehicle coverage: GM, FORD, CHRYSLER
Asian	Vehicle coverage: TOYOTA, LEXUS, HONDA, ACURA, NISSAN, INFINITI, HYUNDAI, KIA, MITSUBISHI, ISUZU, SUZUKI, MAZDA, SUBARU, etc
Chinese	Vehicle coverage: BYD, CHANA, CHEYR, GEELY, GWM, LIFAN, etc
European	Vehicle coverage: BMW, MERCEDES-BENZ, CITROEN, PEUGEOT, VOLVO, LANDROVER, JAGUAR, FIAT, OPEL, VAUXHALL, AUDI, VOLKSWAGEN, RENAULT, etc

Diagnose – Vehicle Identification

CHRYSLER	
1	Automatic selection
2	Manual selection

Automatic selection

The diagnostic system features the latest VIN-based Auto VIN Scan function to identify CAN vehicles in just one touch, which allows the technician to quickly detect vehicles, scan all the diagnosable ECUs on every vehicle and run diagnostics on the selected system.

Manual selection

This mode of vehicle selection is menu driven; you can make a series of choices, Each selection you make advances you to the next screen. A Back button returns you to the previous screen. Exact procedures may vary some-what by various vehicles being serviced.

Diagnose – Control Unit

Control Unit	
1	Powertrain Control Module
2	Transmission Control Module
3	Anti Lock Brakes
4	AirBag

This option allows you to manually locate a required control system for testing through a series of choices. Follow the menu driven procedures and make proper selections; the application will guide you to the diagnostic function menu after a few choices you're made.

Diagnose – Function Selection

Powertrain Control Module	
1	Computer identification
2	Read fault code
3	Clear fault code
4	Read data stream

The Function Menu options vary slightly for different vehicles. The function menu may include:

- Computer identification — provides the retrieved ECU information in detail.
An information screen opens upon selection.
- Read fault code — displays detailed information of DTC records retrieved from the vehicle control module.
- Clear fault code — erases DTC records and other data from the test vehicle's ECU.
- Read data stream — retrieves and displays data stream and parameters from the vehicle's ECU.

Diagnose – ECU Information

Vehicle Information	
Model Year	2010.00
ECU Part No.	68045613AE
Body Style	Station Wagon
Vehicle Line	RT
VIN-Original	2D4RN4DE0AR 473865

- The function retrieves and displays the specific information for the tested control unit, including unit type, version numbers and other specifications. The sample Vehicle Information screen displays as above.
- During an active test, the tester outputs commands to the ECU in order to drive the actuators. This test determines the integrity of the system or parts by reading the engine ECU data, or by monitoring the operation of the actuators, such as switching a solenoid, relay, or switch, between two operating states

Diagnose – Read Fault Code

Fault code list	
P0522	Engine Oil Pressure Sensor
U0141	Low Communication with IPM (FCM/TIPM) [Active]
P0685	ASD/Main Control Circuit [Active]
P0627	Fuel Pump Control Circuit/open

This function retrieves and displays the DTCs from the vehicle's control system. The Fault code list screen varies for each vehicle being tested. On some vehicles, freeze frame data can also be retrieved for viewing. The sample Read Codes screen displays as above.

Diagnose – Clear fault code

Information		
Do you want to erase all the fault code (s)?		
Yes	No	

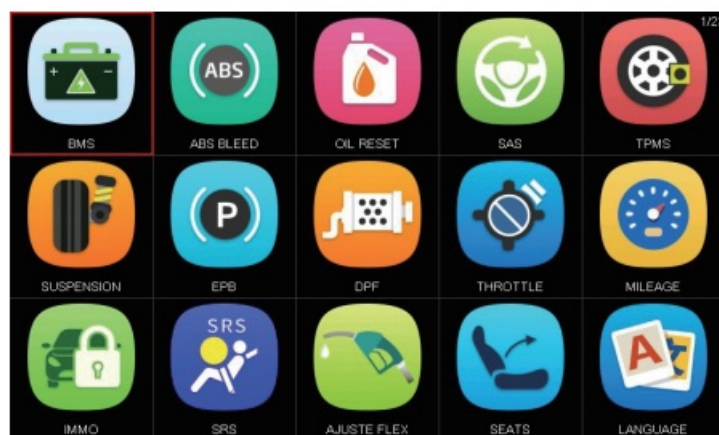
After reading the retrieved codes and making appropriate vehicle repairs, use this function to clear fault code.

Diagnose – DataStream

CHRYSLER	
Current Fuel Shutoff	ASD
SKIM VTA Invalid Key Received Fault Posted	False
NGC Should Shut Off Fuel	Fuel On
SKIM/VATA Has Completed	False
IGN RUN START SW	On

When this function is selected, the screen displays the data list for the selected module. The items available for any control module vary by vehicle. The parameters display in the order that they are transmitted by the ECM, so expect variation between vehicles.

Special Function



These functions perform various component adaptations, allowing you to recalibrate or configure certain components after some maintenance or replacement.

Definition of Special Function

- Oil Light Reset

This function allows you to perform reset for the Engine Oil Life system, which calculations An optional oil life change interval depending on the vehicle driving conditions and climates. The Oil Life Reminder must be reset every time the oil is changed, so the system can calculate when the next oil change is required.

EPB Reset

This function has a multitude of usages to maintain the electronic braking system safely and effectively. The applications include deactivating and activating the brake control system, assisting with brake fluid control, opening and closing brake pads, and setting brakes after disc or pad replacement, etc

ABS Bleeding

This function allows you to perform various bi-directional tests to check the operating conditions of Anti-lock Braking System (ABS).

1. When the ABS contains air, the ABS bleeding function must be performed to bleed the brake system to restore ABS brake sensitivity.
2. If the ABS computer, ABS pump, brake master cylinder, brake cylinder, brake line, or brake fluid is replaced,

the ABS bleeding function must be performed to bleed the ABS.

Throttle Relearn

This function enables you to make initial settings to throttle actuators and returns the “learned” values stored on ECU to the default state. Doing so can accurately control the actions of regulating throttle (or idle engine) to adjust the amount of air intake.

SAS Reset

To reset the steering angle, first find the relative zero point position for the car to drive in straight line. Taking this position as reference, the ECU can calculate the accurate angle for left and right steering. After replacing the steering angle position sensor, replacing steering mechanical parts (such as steering gearbox, steering column, end tie rod, steering knuckle), performing four-wheel alignment, or recovering car body, you must reset the steering angle.

About



Product Serial Number: VT1000002 Register Password: VTTXCNO2 Firmware Version: 7001.7048 System Software Version: 5.72 www.vdiagtool.com
(NOT SUPPORT USB MODE)

About : Display the system information including the register password, firmware version, system software version and company information .

OBDII Function

Please Select the Nameplate:	
[1]	Read Current Trouble Code
[2]	Clear Trouble Code
[3]	Read Current Data
[4]	Read Pending Trouble Code
[5]	Read Freeze Frame Data
[6]	Readiness Tests
[7]	On-Board Monitoring Test
[8]	Read System Information

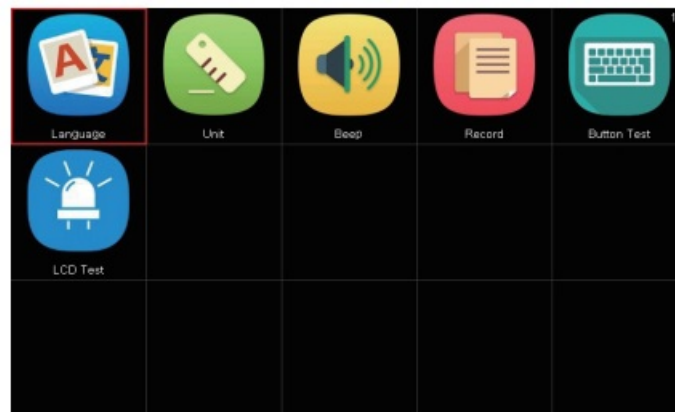
This section describes the various functions of each option:

- Stored codes are the current emission-related DTCs from the ECM of the vehicle. OBD II/EOBD Codes have a priority according to their emission severity, with higher priority codes overwriting lower priority codes.
- This option is used to clear all emission-related diagnostic data such as, DTCs, Freeze frame data and manufacturer-specific enhanced data from the vehicle's ECM, and reset the I/M Readiness Monitor Status for all vehicle's ECM.
- This function displays the real time PID data from ECU. Displayed data includes analog inputs and outputs,

digital inputs and outputs, and system status information broadcast on the vehicle data stream.

- These are codes that were generated during the last drive cycle, but before the DTC actually sets, two or more consecutive drive cycles are needed. The service is to assist the service technician after a vehicle repair and after clearing diagnostic information, by expect or see differences between makes.
- Typically, the stored frame is the last DTC that occurred. Certain DTCs that have a greater impact on vehicle emission, have a higher priority. The top prioritized DTC is the one for which the freeze frame records are retained.
- This function is used to check the readiness of the monitoring system. It is an excellent function to use prior to having a vehicle inspected for state emissions compliance. Select I/M readiness to display a sub menu with two choice.
- Use this option to view the result of On-Board Monitor tests. The tests are useful after servicing or after erasing a vehicle's control module memory.
- The option displays the vehicle identification number (VIN), the and other information of the test vehicle.

Setting



Language	<p>Display multi-languages function menu. Total 18 languages optional.</p> <p>Only 2 languages loaded before delivery: English + local language</p>
Unit	<p>Display unit setting menu.</p> <p>Unit includes: Metric and English units.</p> <p>Press OK to change the unit setting selection.</p>
Beep	<p>Display beep setting menu. Beep includes: On and Off.</p> <p>Press OK to change the beep setting selection.</p>
Record	<p>Display record setting menu. Record includes: On and Off.</p> <p>Press OK to change the record setting selection.</p> <p>This function allows data recording during the car testing.</p>
Button Test	<p>Display button function menu.</p> <p>Press the FN key for 2 seconds to quit the button test.</p>
LCD Test	<p>Display LCD test function menu. Press ESC to quit the LCD test.</p>

FAQ

- Why cannot install AUTOOL Update client correctly?

After installing the AUTOOL Update Client software, the system won't accept the serial number for the auto scanner.

Note: You need to connect auto scanner to PC with the USB cable before software download.

- Why the vehicle linking error ?

A communication error occurs if the auto scanner fails to communicate with the vehicle ECU. Follow the steps to check the connections:

1. Verify the ignition is ON.
2. Check the cable or connector is securely connected to the vehicle DLC.
3. Turn the ignition off and wait for about 10 seconds and turn the ignition back to ON and continue the testing.
4. Verify the control module is not defective.

- Why the device doesn't power up ?

If the auto scanner won't power up or operate correctly in any other way, follow the steps to check the connections:

1. Check the connector properly inserted to the socket seat.
2. Check the DLC pins bent or broken.
3. Clean the DLC pins if necessary.

- Why the device have no permission to update?

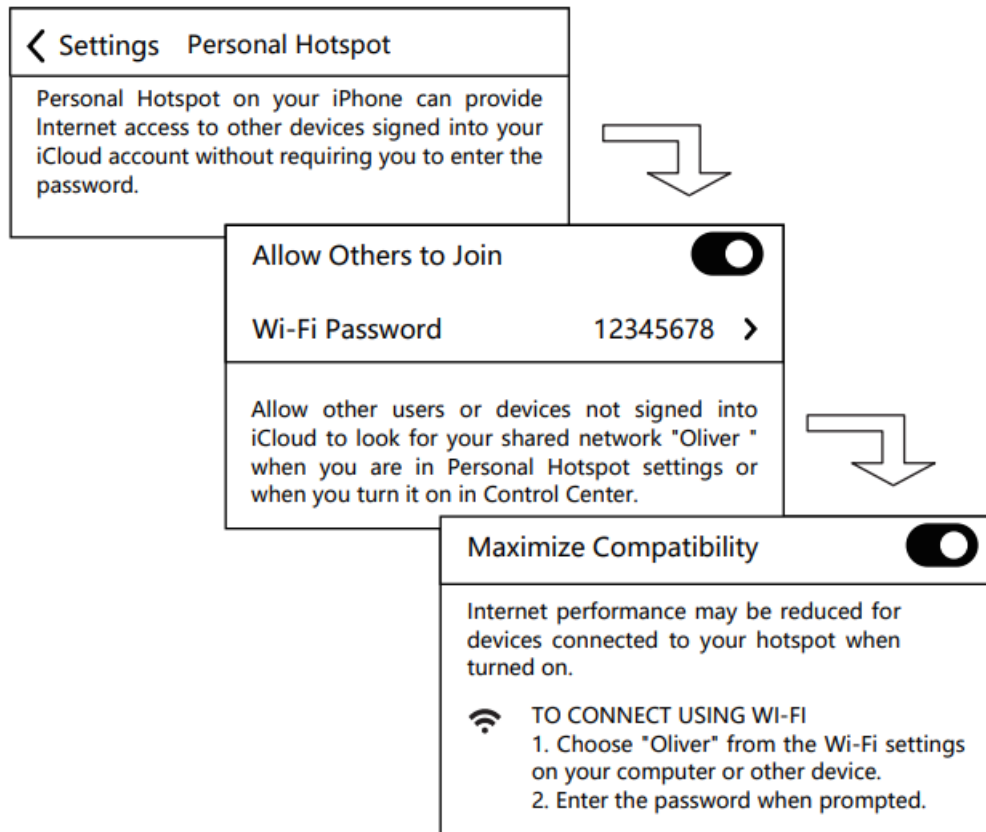
Please contact the local distributor to get authorization.

- Why cannot find the WIFI name ?

The device can only display the Wifi name consisting of English character or numbers.

- How to set Wifi if the mobile is iPhone 11 or higher version?

Click the Settings from the iPhone mobile to access Personal Hotspot. Click Allow Others to Join and input Wi-Fi Password and meanwhile switch on Maximize Compatibility.



Warranty

12-Month Limited Warranty

AUTOOL warrants to the original retail purchaser of this AUTOOL auto scanner, that should this product or any part thereof during normal consumer usage and conditions, be proven defective in material or workmanship that results in product failure within twelve (12) months period from the date of delivery, such defects will be repaired, or replaced (with new or rebuilt parts) with Proof of Purchase, at the Company's option, without charge for parts or labor directly related to the defects.

The Company shall not be liable for any incidental or consequential damages arising from the use, misuse, or mounting of the auto scanner. Some states do not allow limitation on how long an implied warranty lasts, so the above limitations may not apply to you.

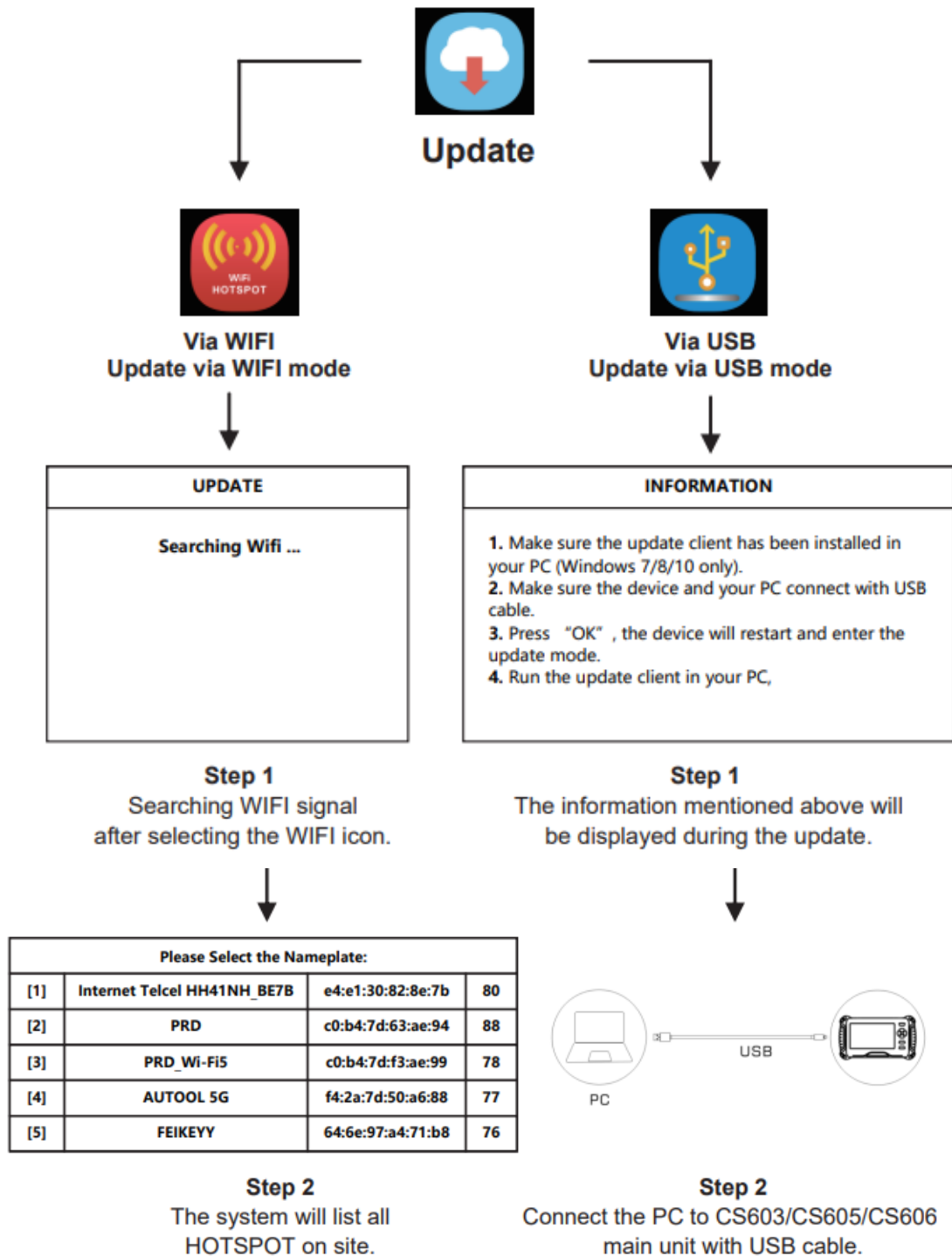
This warranty does not apply to:

1. Product subject to abnormal use or conditions, accident, mishandling, neglect, unauthorized alternation, misuse, improper installation or repair or improper storage;
2. Products whose mechanical serial number or electronic serial number has been removed, altered or defected;
3. Damage from expose to excessive temperatures or extreme environmental conditions;
4. Damage resulting from connection to, or use of any accessory or other product not approved or authorized by the Company;
5. Defects in appearance, cosmetic, decorative or structural items such as framing and non operative parts;

6. Product damaged from external causes such as fire, dirt, sand, battery leakage, blown fuse, theft or improper usage of any electrical source.

IMPORTANT: All contents of the product may be deleted during the process of repair. You should create a back-up copy of any contents of your product before delivering the product for warranty service.

Update Instructions and Procedures



↓

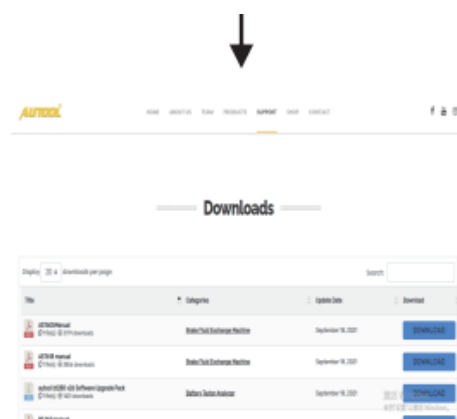
PASSWORD												
1a2345												
0	1	2	3	4	5	6	7	8	9	.		
q	w	e	r	t	y	u	i	o	p	,		
a	s	d	f	g	h	j	k	l)	-		
z	x	c	v	b	n	m	/	*	(_		
ABC			SPACE			Backspace						

Step 3
Input the password if necessary.

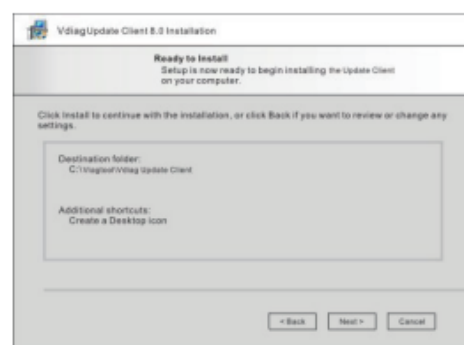
↓

UPDATE
Connecting Wifi ...

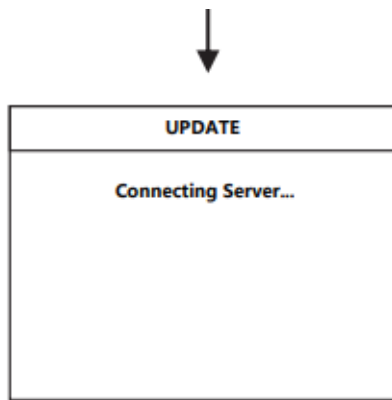
Step 4
Connecting the WIFI during the testing.



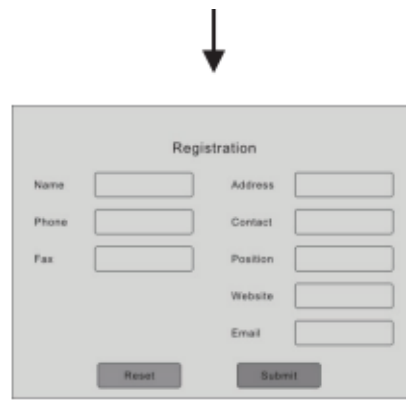
Step 3
Visit the website www.autooltech.com



Step 4
Download AUTOOL Update Client to PC according to the instructions.



Step 5
Connect the Server as above.



Step 5
Input the necessary information during the first registration.

 A screenshot of a software interface titled "UPDATE". It displays a table with columns for selection status, index, car make, and file size. The table lists four car makes: AMFORD, EUR FORD, BENZ, BMW, and CHANA. The first and third rows are checked.

UPDATE				
✓	[1]	AMFORD, EUR FORD	5.82	37.81MB
	[2]	BENZ	4.22	19.54MB
✓	[3]	BMW	3.7	7.01MB
	[4]	CHANA	3.14	4.29MB

Step 6
Select the car makes for update according to the demands.



Step 6
Select the car makes for update according to the demands.

Copyright Information

All rights reserved by AUTOOL TECH. CO., LTD. No part of this publication may be reproduced, stored in a retrieval system, or transmitted in any form or by any means, electronic, mechanical, photocopying, recording or otherwise, without the prior written permission of AUTOOL. The information contained herein is designed only for the use of this unit. AUTOOL is not responsible for any use of this information as applied to other units. Neither AUTOOL nor its affiliates shall be liable to the purchaser of this unit or third parties for damages, losses, costs, or expenses incurred by purchaser or third parties as a result of: accident, misuse, or abuse of this unit, or unauthorized modifications, repairs, or alterations to this unit, or failure to strictly comply with AUTOOL operating and maintenance instructions. AUTOOL shall not be liable for any damages or problems arising from the use of any options or any consumable products other than those designated as Original AUTOOL Products or AUTOOL Approved Products by AUTOOL. Other product names used herein are for identification purposes only and may be trademarks of their respective owners. AUTOOL disclaims any and all rights in those marks. Manual are either trademarks, registered trademarks, service marks, domain names, logos, company names or are otherwise the property of AUTOOL or its affiliates. In countries where any of the AUTOOL trademarks, service marks, domain names, logos and company names are not registered, AUTOOL claims other rights associated with unregistered trademarks, service marks, domain names, logos, and company names. Other products or company names referred to in this manual may be trademarks of their respective owners. You may not use any trademark, service mark, domain name, logo, or company name of AUTOOL or any third party without permission from the owner of the applicable trademark, service mark, domain name, logo, or company name. You may contact AUTOOL by visiting AUTOOL at <https://www.autooltech.com>, or writing to aftersale@autooltech.com, to request written permission to use Materials on this manual for purposes or for all other questions relating to this manual.

Warranty

- Thank you for choosing our products, we will provide you with the following services and promises.
- The warranty period of this product is 1 year.
- After the warranty period expires, repairs will be charged for replacement parts.
- After the failure, please contact the manufacturer, we will give you the most complete service in the shortest time.

The following items are not covered by the warranty:

- Vulnerable parts are not covered by the warranty, including: glass tube, signal sire, stickers, connectors pressure gauge, oil outlet pipe.
- When no cleaning agent is added to the ultrasonic tank, turning on the ultrasonic cleaning switch will damage the ultrasonic system, which is not covered by the warranty.
- If the testing agent is not replaced in time after long-term use, the oil pump filter screen is blocked and the oil pump is burned out of the warranty.
- The use of fuel injector cleaning agent as fuel injector testing agent will cause the fuel pump to burn out, which is not covered by the warranty.
- Man-made faults are not covered by the warranty.

Disclaimer: All information, illustrations, and specifications contained in this manual, AUTOOL resumes the right of modify this manual and the machine itself with no prior notice. The physical appearance and color may differ from what is shown in the manual, please refer to the actual product. Every effort has been made to make all descriptions in the book accurate, but inevitably there are still inaccuracies, if in doubt, please contact your dealer or AUTOOL after-service centre, we are not responsible for any consequences arising from misunderstandings.

AUTOOL CS603 / CS605 / CS606 Auto Scanner

www.autooltech.com

Shenhua Innovation Park, Baoan, Shenzhen, China www.autooltech.com

aftersale@autooltech.com




+86-400 032 0988 / +86-755-27807580



Documents / Resources

	<p>AUTOOL CS603 Obdii V3.2 Obd2 Scanner Reader [pdf] User Manual CS603 Obdii V3.2 Obd2 Scanner Reader, CS603, Obdii V3.2 Obd2 Scanner Reader, Scanner Reader, Reader</p>
--	---

References

-  [AUTOOL: Getting Better All The Tools](#)
-  [VDIAGTOOL](#)
-  [AUTOOL: Getting Better All The Tools](#)

Manuals+.