



Autonics PR Series (DC 2-wire) Cylindrical Inductive Proximity Sensors Instruction Manual

[Home](#) » [Autonics](#) » Autonics PR Series (DC 2-wire) Cylindrical Inductive Proximity Sensors Instruction Manual



Autonics

Series (DC 2-wire) Cylindrical Inductive Proximity Sensors
Instruction Manual



Contents

- [1 PR Series \(DC 2-wire\) Cylindrical Inductive Proximity Sensors](#)
- [2 Safety Considerations](#)
- [3 Ordering Information](#)
- [4 Connections](#)
- [5 Operation Timing Chart](#)
- [6 Specifications](#)
- [7 Cut-out Dimensions](#)
- [8 Mutual-interference & Influence by Surrounding Metals](#)
- [9 Flush+General type](#)
- [10 Documents / Resources](#)
 - [10.1 References](#)
- [11 Related Posts](#)

PR Series (DC 2-wire) Cylindrical Inductive Proximity Sensors


For your safety, read and follow the considerations written in the instruction manual, other manuals and Auto nicks website.

The specifications, dimensions, etc. are subject to change without notice for product improvement. Some models may be discontinued without notice.

Major Features

- Spatter-resistant type : PTFE coated for high heat resistance (prevent malfunction from welding spatter)
- Operation indicator (red LED)
- IP67 Protection structure (IEC standards)

Safety Considerations

- Observe all 'Safety Considerations' for safe and proper operation to avoid hazards.
-  **symbol** indicates caution due to special circumstances in which hazards may occur.



Warning Failure to follow instructions may result in serious injury or death.


1. Fail-safe device must be installed when using the unit with machinery that may cause serious injury or substantial economic loss. (e.g. nuclear power control, medical equipment, ships, vehicles, railways, aircraft, combustion apparatus, safety equipment, crime/disaster prevention devices, etc.) Failure to follow this instruction may result in personal injury, economic loss or fire.
2. Do not use the unit in the place where flammable/explosive/corrosive gas, high humidity, direct sunlight, radiant heat, vibration, impact, or salinity may be present. Failure to follow this instruction may result in explosion or fire.
3. Do not disassemble or modify the unit. Failure to follow this instruction may result in fire.
4. Do not connect, repair, or inspect the unit while connected to a power source. Failure to follow this instruction may result in fire.
5. Check 'Connections' before wiring. Failure to follow this instruction may result in fire.



Caution Failure to follow instructions may result in injury or product damage.

1. Use the unit within the rated specifications. Failure to follow this instruction may result in fire or product damage.
2. Use a dry cloth to clean the unit, and do not use water or organic solvent. Failure to follow this instruction may result in fire.
3. Do not supply power without load. Failure to follow this instruction may result in fire or product damage.

Cautions during Use

- Follow instructions in 'Cautions during Use'. Otherwise, it may cause unexpected accidents.
- 12-24 VDC  power supply should be insulated and limited voltage/current or Class 2, SELV power supply device.
- Use the product, after 0.8 sec of supplying power.
- Wire as short as possible and keep away from high voltage lines or power lines, to prevent surge and inductive noise.

Do not use near the equipment which generates strong magnetic force or high frequency noise (transceiver, etc.).

In case installing the product near the equipment which generates strong surge (motor, welding machine, etc.), use diode or varactor to remove surge.

- If the surface is rubbed with a hard object, PTFE coating can be worn out.
- This unit may be used in the following environments.
 - Indoors (in the environment condition rated in 'Specifications')

- Altitude max. 2,000 m
- Pollution degree 2
- Installation category II

Cautions for Installation

- Install the unit correctly with the usage environment, location, and the designated specifications.
- Do NOT impacts with a hard object or excessive bending of the wire lead-out. It may cause damage the water resistance.
- Do NOT pull the Ø 3.5 mm cable with a tensile strength of 25 N, the Ø 4 mm cable with a tensile strength of 30 N or over and the Ø 5 mm cable with a tensile strength of 50 N or over. It may result in fire due to the broken wire.
- When extending wire, use AWG 22 cable or over within 200 m.

Ordering Information

This is only for reference, the actual product does not support all combinations. For selecting the specified model, follow the Autonics website.



1. Characteristic

No mark: General type
A: Spatter-resistant type

2. Connection

No mark: Cable type
W: Cable connector type
CM: Connector type

3. DIA. of sensing side

Number: DIA. of sensing side (unit: mm)

4. Sensing distance

Number: Sensing distance (unit: mm)

5. Power supply

D: 12 – 24 VDC

X: 12 – 24 VDC (non-polarity)

6. Control output

O: Normally open
C: Normally closed

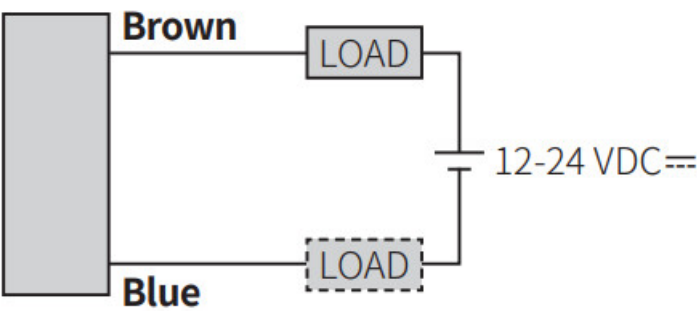
7. Cable

No mark: Standard type
I: Standard type (IEC standards)
V: Oil resistant cable type
IV: Oil resistant cable type (IEC standards)

Connections

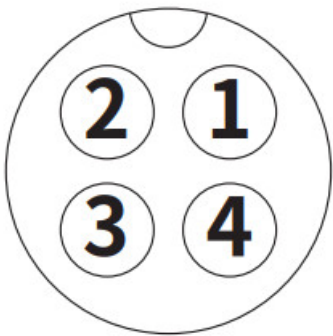
- LOAD can be wired to any direction.
- Connect LOAD before supplying the power.
- No need to consider polarity for non-polarity type of power supply.

■ Cable type



Cable connector type / Connector type

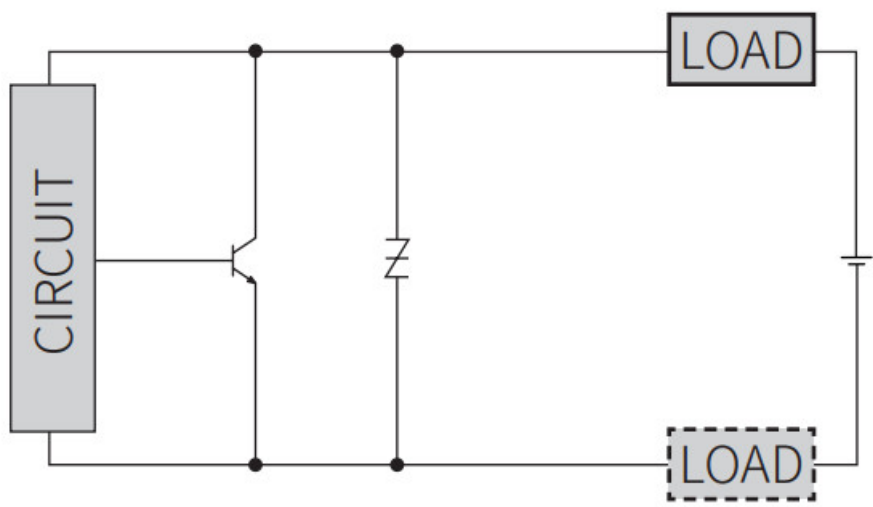
- For LOAD connection, follow the cable type connection.
- Fasten the connector not to shown the thread. (0.39 to 0.49 N m)
- Fasten the vibration part with PTFE tape.



Standard type		
Pin	Color	Func.
①	—	—
②	—	—
③	Blue	0 V
④	Brown	+V

IEC standards				
Pin	Normally open		Normally close	
	Color	Func	Color	Func
①	Brown	+V	Brown	+V
②	—	—	Blue	0 V
③	—	—	—	—
④	Blue	0 V	—	—

■ Inner circuit



Operation Timing Chart





	Normally open	Normally closed
Sensing target	Presence Nothing	Presence Nothing
	Operation Return	Operation Return
Operation indicator (red)	ON OFF	ON OFF
	ON OFF	ON OFF





Sold Separately

- Connector cable, connector connection cable
- Transmission coupler

- Spatter protection cover
- Fixed bracket

Specifications

Installation	Flush type			
General	PR□T08-1.5□	PR□T12-2□	PR□T18-5□	PR□T30-10□
Spatter-resistant	—	PRA□T12-2□	PRA□T18-5□	PRA□T30-10□
DIA. of sensing side	Ø 8 mm	Ø12 mm	Ø18 mm	Ø30 mm
Sensing distance	1.5 mm	2 mm	5 mm	10mm
Setting distance	0 to 1.05 mm	0 to 1.4 mm	0 to 3.5 mm	0 to 7 mm
Hysteresis	≤ 10 % of sensing distance (DIA. of sensing side Ø 8 mm connector type: ≤ 15 %)			
Standard sensing target: iron	8 × 8 × 1 mm	12 × 12 × 1 mm	18 × 18 × 1 mm	30 × 30 × 1 mm
Response frequency 01)	1.5 kHz	1.5 kHz	500 Hz	400 Hz
Affection by temperature	≤ ± 10 % for sensing distance at ambient temperature 20 °C (DIA. of sensing side Ø 8 mm: ≤ ± 20 %)			
Indicator	Operation indicator (red)			
Approval				

Installation	Non-flush type			
General	PR□T08-2□	PR□T12-4□	PR□T18-8□	PR□T30-15□
DIA. of sensingside	Ø 8 mm	Ø 12 mm	Ø 18 mm	Ø 30 mm
Sensing distance	2 mm	4 mm	8 mm	15 mm
Setting distance	0 to 1.4 mm	0 to 2.8 mm	0 to 5.6 mm	0 to 10.5 mm
Hysteresis	≤ 10 % of sensing distance (DIA. of sensing side Ø 8 mm connector type: ≤ 15 %)			
Standard sensing target: iron	8 × 8 × 1 mm	12 × 12 × 1 mm	25 × 25 × 1 mm	45 × 45 × 1 mm
Response frequency 01)	1.0 kHz	500 Hz	350 Hz	200 Hz
Affection by temperature	≤ ± 10 % for sensing distance at ambient temperature 20 °C (DIA. of sensing side Ø 8 mm: ≤ ± 20 %)			
Indicator	Operation indicator (red)			
Approval				

1. The response frequency is the average value. The standard sensing target is used and the width is set as
2. times of the standard sensing target, 1/2 of the sensing distance for the distance.

Unit weight (package)	o 8 mm	o 12 mm	o 18 mm	o 30 mm
Cable	≈ 52 g (≈ 64 g)	≈ 72 g (≈ 84 g)	≈ 110 g (≈ 122 g)	≈ 170 g (≈ 207 g)
Cable connector	≈ 32 g (≈ 44 g)	≈ 42 g (≈ 54 g)	≈ 58 g (≈ 70 g)	≈ 122 g (≈ 134 g)
Connector	≈ 10 g (≈ 32 g)	≈ 26 g (≈ 38 g)	≈ 49 g (≈ 61 g)	≈ 142 g (≈ 154 g)01)

01) Spatter-resistant type: ≈ 134 g (≈ 146 g)

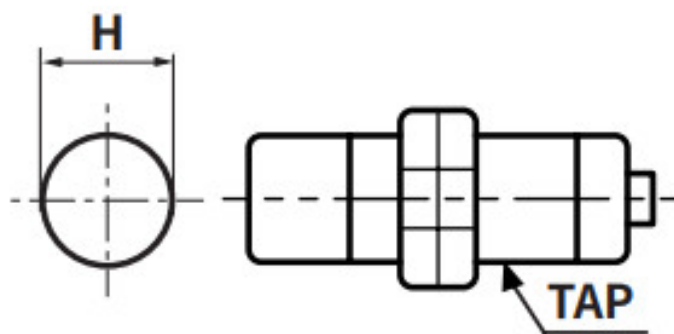
Power supply	12 – 24 VDC (ripple P-P: ≤ 10 %), operating voltage: 10 – 30 VDC
Leakage current	≤ 0.6 mA
Control output	2 to 100 mA
Residual voltage	≤ 3.5 V (non-polarity 01): ≤ 5 V)
Protection circuit	Surge protection circuit, output short over current protection circuit, reverse polarity protection
Insulation resistance	≥ 50 MΩ (500 VDC megger)
Dielectric strength	1,500 VAC 50 / 60 Hz for 1 min (between all terminals and case)
Vibration	1 mm double amplitude at frequency 10 to 55 Hz (for 1 min) in each X, Y, Z direction for 2 hours
Shock	500 m/s ² (≈ 50 G) in each X, Y, Z direction for 3 times
Ambient temperature	-25 to 70 °C, storage: -30 to 80 °C (no freezing or condensation)
Ambient humidity	35 to 95 %RH, storage: 35 to 95 %RH (no freezing or condensation)
Protection structure	IP67 (IEC standards)
Connection	Cable type / Cable connector type / Connector type model
Cable spec. 02)	DIA. of sensing side Ø 8 mm: Ø 3.5 mm, 2-wire DIA. of sensing side Ø 12 mm: Ø 4 mm, 2-wire DIA. of sensing side Ø 18 mm, Ø 30 mm: Ø 5 mm, 2-wire
Wire spec.	Ø 3.5 mm cable : AWG 24 (0.08 mm, 40-core), insulator diameter: Ø 1 mm Ø 4 mm , Ø 5 mm cable : AWG 22 (0.08 mm, 60-core), insulator diameter: Ø 1.25 mm
Connector spec.	M12 connector
Material	Standard type cable (black): polyvinyl chloride (PVC) Oil resistant cable type cable (gray): polyvinyl chloride (oil resistant PVC)
General	Case/Nut: nickel plated brass (DIA. of sensing side Ø 8 mm connector type case: SUS303), washer: nickel plated iron, sensing side: PBT
Spatter-resistant	Case/Nut: PTFE coated brass, washer: PTFE coated iron, sensing side: PTFE

01) Check the condition of connected device.

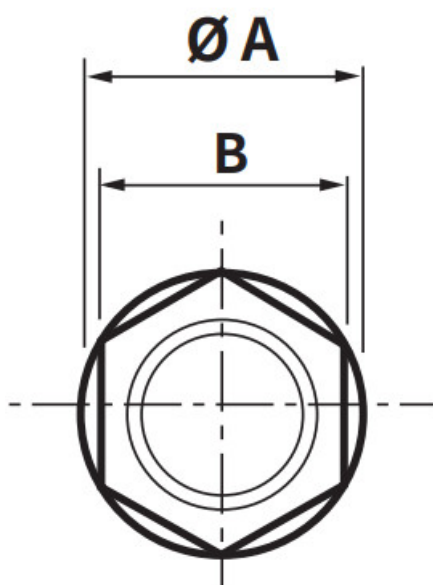
02) Cable type: 2 m, cable connector type: 300 mm

Cut-out Dimensions

- Unit: mm, For the detailed drawings, follow the Autonics web site.



	ø 8 mm	ø 12 mm	ø 18 mm	ø 30 mm
Mounting hole (H)	Ø 8.5 +0.50	Ø 12.5 +0.50	Ø 18.5 +0.50	Ø 30.5 +0.50
TAP	M8×1	M12×1	M18×1	M30×1.5

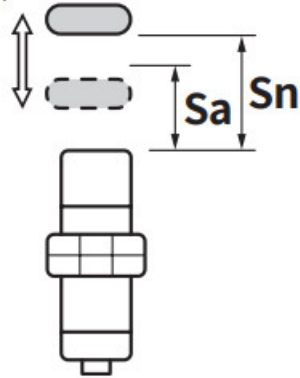


	ø 8 mm	ø 12 mm	ø 18 mm	ø 30 mm
ØA	15	21	29	42
B	13	17	24	35

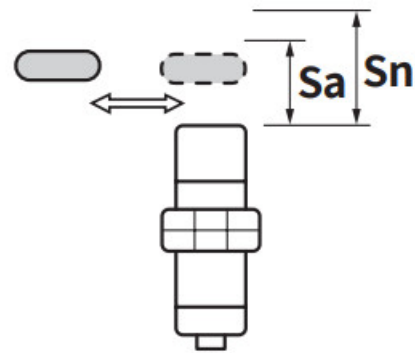
Setting Distance Formula

Detecting distance can be changed by the shape, size or material of the target. For stable sensing, install the unit within the 70 % of sensing distance.

Sensing target
: Up-Down movement



Sensing target
: Right-Left movement



Setting distance (Sa) = Sensing distance (Sn) × 70 %

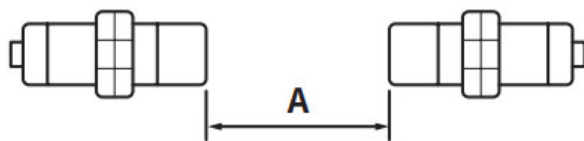
Mutual-interference & Influence by Surrounding Metals

Mutual-interference

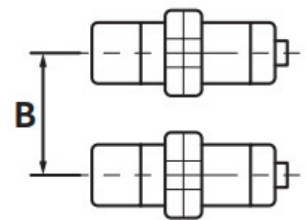
When plural proximity sensors are mounted in a close row, malfunction of sensor may be caused due to mutual interference.

Therefore, be sure to provide a minimum distance between the two sensors, as below table.

[Face to Face]

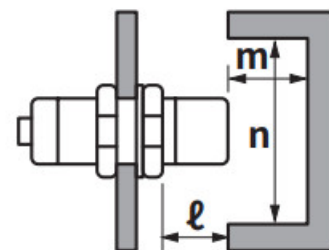
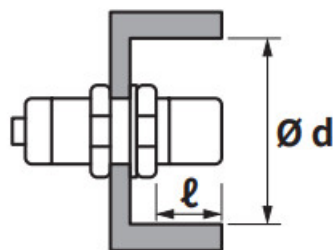
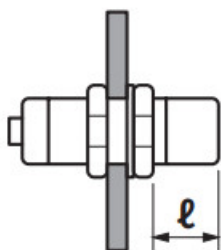


[Parallel]



Influence by surrounding metals

When sensors are mounted on metallic panel, it must be prevented sensors from being affected by any metallic object except target. Therefore, be sure to provide a minimum distance as below chart.



Sensing side Item	ø 8 mm		ø 12 mm		ø 18 mm		ø 30 mm	
	Flush	Non-flush	Flush	Non-flush	Flush	Non-flush	Flush	Non-flush
A	9	12	12	24	30	48	60	90
B	16	24	24	36	36	54	60	90
ℓ	0	8	0	11	0	14	0	15
Ød	8	24	12	36	18	54	30	90
m	4.5	6	6	12	15	24	30	45
n	12	24	18	36	27	54	45	90

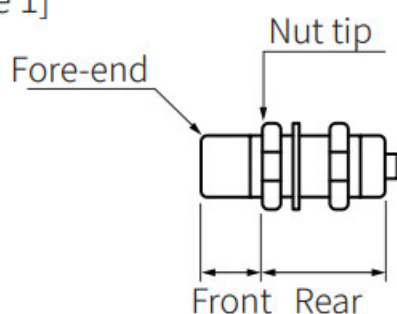
Tightening Torque

Use the provided washer to tighten the nuts.

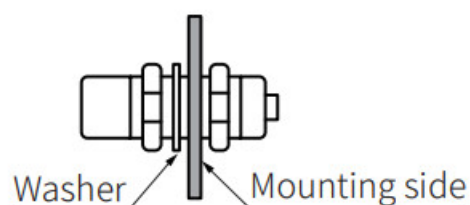
The tightening torque of the nut varies with the distance from the fore-end. [Figure 1] If the nut tip is located at the front of the product, apply the front tightening torque.

the allowable tightening torque table is for inserting the washer as [Figure 2].

[Figure 1]

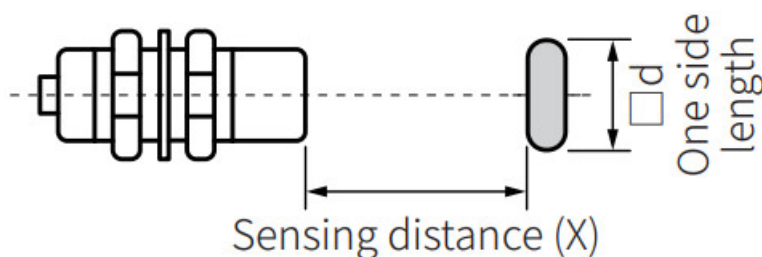


[Figure 2]



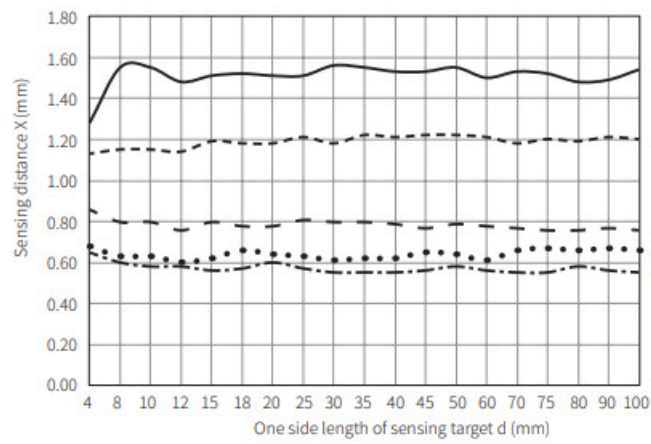
Sensing side Strength	ø 8 mm		ø 12 mm		ø 18 mm		ø 30 mm	
	Flush	Non-flush	Flush	Non-lush	Flush	Non-flush	Flush	Non-lush
Front size	7 mm	5 mm	13 mm	7 mm	–	–	26 mm	12 mm
Front torque	3.92 N m		6.37 N m		14.7 N m		49 N m	
Rear torque	8.82 N m		11.76 N m		14.7 N m		78.4 N m	

Sensing Distance Feature Data by Target Material and Size

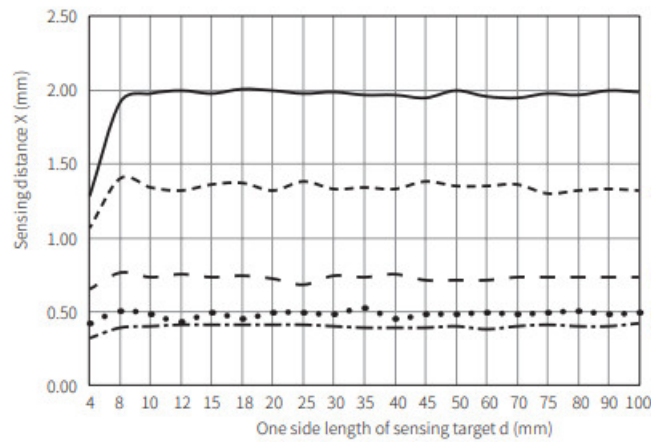


Flush+General type

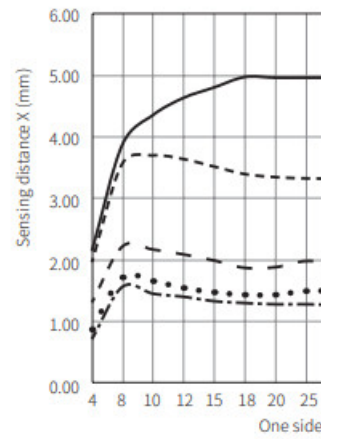
• Ø 8 mm



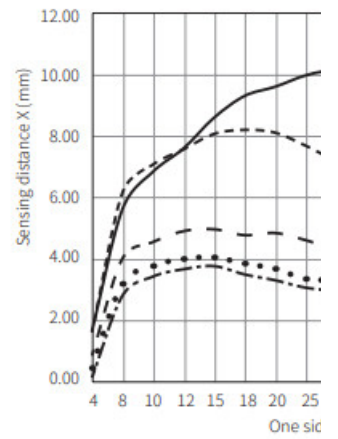
• Ø 12 mm



• Ø 18 mm

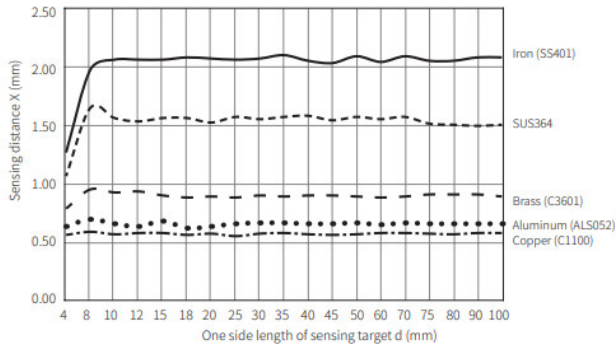


• Ø 30 mm

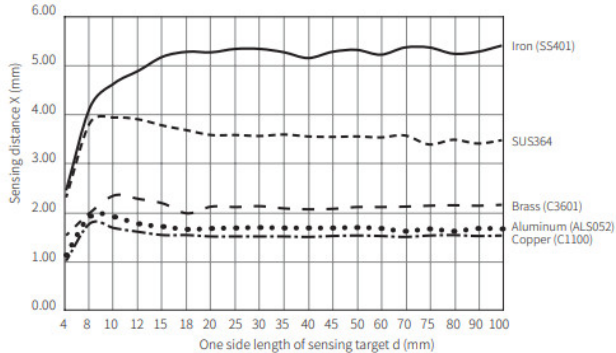


■ Flush + Spatter-resistant type

• Ø 12 mm

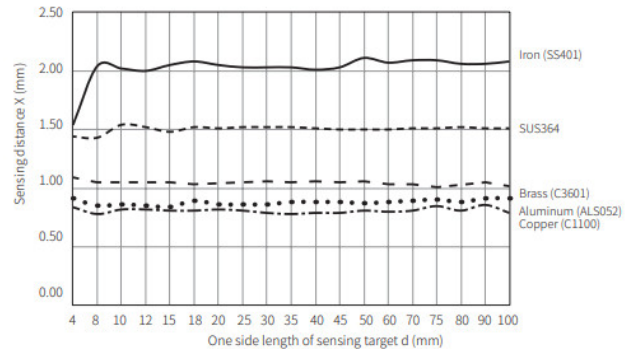


• Ø 18 mm

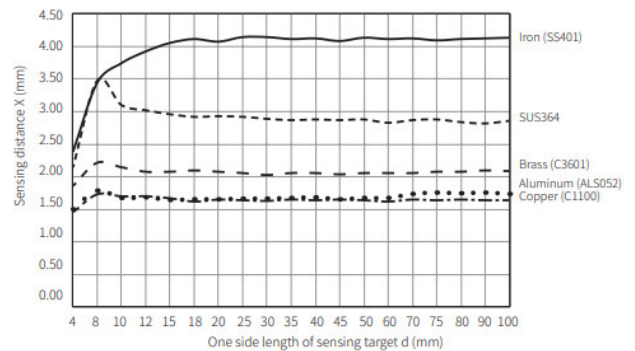


■ Non-flush + General type

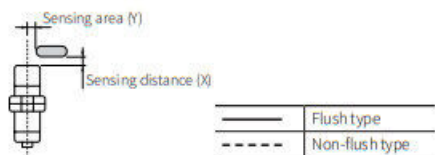
• Ø 8 mm



• Ø 12 mm

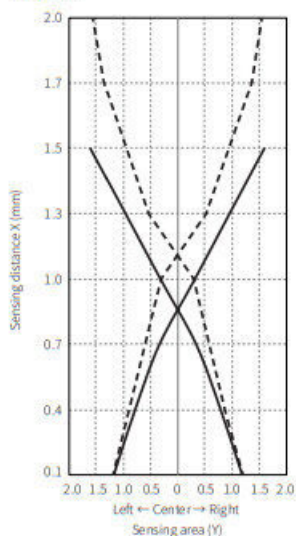


Sensing Distance Feature Data by Parallel (left/right) Movement

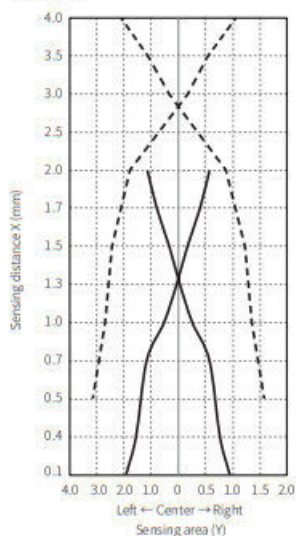


■ General type

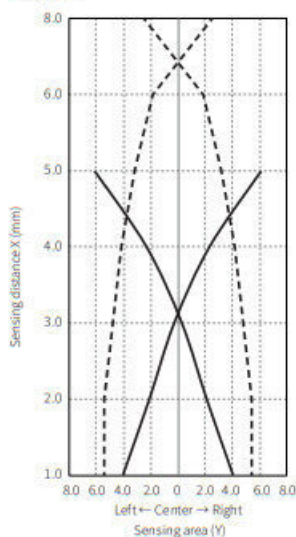
• Ø 8 mm



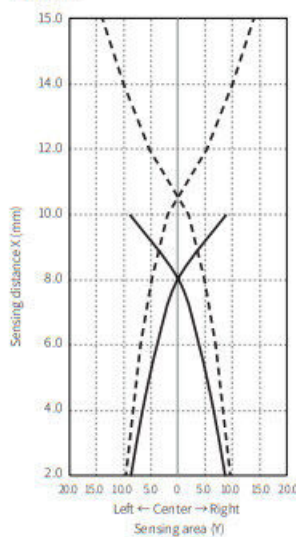
• Ø 12 mm



• Ø 18 mm

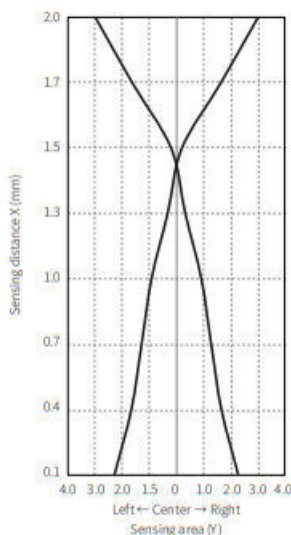


• Ø 30 mm

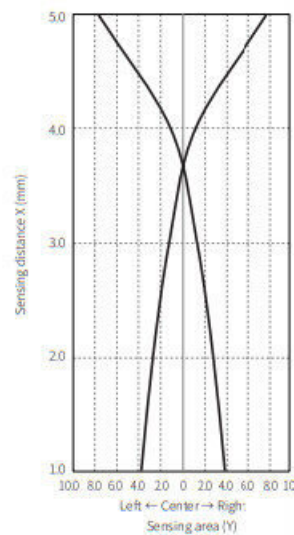


■ Spatter-resistant type

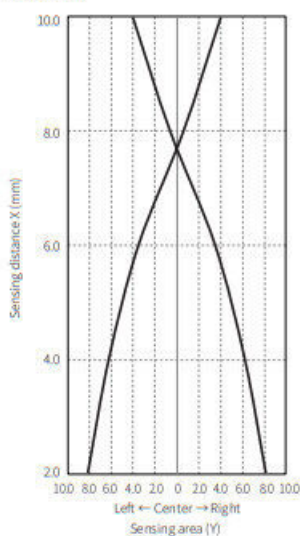
• Ø 12 mm



• Ø 18 mm



• Ø 30 mm



Autonics


18, Bansongro 513Beon-gil, Sundae, Busan, Republic of Korea, 48002

www.autonics.com

+82-2-2048-1577

sales@autonics.com

Documents / Resources

	<p>Autonics PR Series (DC 2-wire) Cylindrical Inductive Proximity Sensors [pdf] Instruction M anual</p> <p>PR Series DC 2-wire Cylindrical Inductive Proximity Sensors, PR Series DC 2-wire, Cylindrical I nductive Proximity Sensors, Inductive Proximity Sensors, Proximity Sensors, Sensors</p>
---	--

References

-  [autonics.com](https://www.autonics.com)