

automatic
TECHNOLOGY
HIRO GDO-12AM
Battery Backup
for Hiro Operator



automatic TECHNOLOGY HIRO GDO-12AM Battery Backup for Hiro Operator Installation Guide

[Home](#) » [automatic TECHNOLOGY](#) » automatic TECHNOLOGY HIRO GDO-12AM Battery Backup for Hiro Operator Installation Guide 

Contents

- 1 automatic TECHNOLOGY HIRO GDO-12AM Battery Backup for Hiro Operator
- 2 Product Information
- 3 Product Usage Instructions
- 4 FAQ
- 5 System Specifications
- 6 Safety Information
- 7 Kit Contents
- 8 Operator Safety & Security
- 9 Installation Instructions
- 10 Pre-Installation Requirements
- 11 Fitting the Opener
- 12 Safety Beam Installation
- 13 Setting Speed and Limits
- 14 FCC STATEMENT
- 15 Attach Warning Labels
- 16 Operation Instructions
- 17 How to Use Your Operator
- 18 User Operating Controls
- 19 User Maintenance Instruction
- 20 Troubleshooting
- 21 Appendix
- 22 Additional Remote Control Functions
- 23 Documents / Resources
 - 23.1 References

automatic TECHNOLOGY HIRO GDO-12AM Battery Backup for Hiro Operator



Specifications

- **Approximate Number of Cycles Under Battery Power:** 10
- **Average Cycle Time Under Battery Power (Opening and Closing):** 40 seconds
- **Battery Capacity (Amp Hours):** 1.3 AH
- **Time for Recharge:** 24 hours

Product Information

The Battery Backup Kit is designed for use with the HIRO GDO-12 AM garage door opener. It includes a battery pack, coupling wire, screws, wall plugs, and battery harness extension.

Installation Instructions

1. Mount the battery backup pack onto the support chassis by sliding it down over the slots. Connect the coupling wire to the battery.

Wall Mounted

1. Connect the battery harness extension plug through the opening in the opener to the control board.
2. To wall mount:
 1. **For plaster walls:** Insert plaster wall plugs into pre-drilled holes, place the battery backup kit over the holes, and affix it with screws.
 2. **For brick walls:** Place the battery backup kit over the holes and affix it with screws.
3. Connect the battery harness to the harness extension.

NOTE: Batteries may take up to 24 hours to charge fully after initial installation.

Product Usage Instructions

1. Test the Opener:

1. Reconnect the power and remove the button cover.
2. Press the programmed transmitter button to test the battery backup installation.
3. Whilst the door is in motion, disconnect the mains power. The door should continue to operate as normal.
4. Press the programmed transmitter button to activate the door. Wait for the door to complete its travel.
5. Whilst the door is in motion, reconnect the power and re-install the button cover. The door should complete the cycle as normal.

2. Troubleshooting:

3. Symptom:

- Possible cause:

4. Maintenance:

- To ensure a long trouble-free life for your battery backup, run the testing procedure every month. Batteries should not need replacing for 4-5 years.

5. Testing Procedure:

- Press the transmitter to activate the opener.
- Whilst the door is in motion, disconnect the power.

FAQ

Q: How often should I run the testing procedure for the battery backup?

A: It is recommended to run the testing procedure on a monthly basis to ensure a long trouble-free life for your battery backup.

System Specifications

Technical Specifications	GDO-12V1AM
Input voltage	120V
Frequency	60Hz
Current (max):	2A
Maximum pull force	400N
Type of door: Max curtain weight: Maximum door area (wind-lock): Maximum door area: The door must be well-balanced and able to be operated by hand, as per warranty conditions and standard UL 325	Rolling Sheet Door 352 lbs 236ft2 * 301ft2
Minimum side room	3 3/4"
Receiver type	Multi-frequency UHF
Receiver code storage capacity	64 x 4-button Transmitters
Number of code combinations	Over 100 billion random codes
Transmitter battery	CR2032 (3 Volts)
Courtesy light	LED (Light Emitting Diodes)
Battery backup	Battery compatible, (requires optional Battery Backup kit)
Network connectivity	Network compatible, (requires optional Smart Phone Control Kit)
Type of entrapment protection	Photo Electric Beam

Windy conditions can activate the obstruction feature of the opener.

Safety Information

- **WARNING!** It is vital for the safety of persons to follow all instructions. Failure to comply with the installation instructions and the safety warnings may result in serious personal injury and/or property and remote control opener damage.
- Please save these instructions for future reference.
- This operator should be installed under relevant US and Canadian standards.
- To reduce the risk of injury to persons – Use this operator only with a rolling door. The drive must not be used with a door incorporating a wicket door unless the drive cannot be operated with the wicket door open.
- All warning signs and placards must be installed where visible in the area of the door.
- This operator is a plug-in domestic appliance and is designed for indoor use only. It must be installed in a dry position that is protected from the weather.

- The door must have Safety Beams fitted.
- Activate the operator only when the garage door is in full view, free of obstructions, and with the operator properly adjusted.
- The network device allows for the operation of the door when not in line-of-sight of the door and operator.
- Therefore the door may operate unexpectedly, therefore do not allow anything to stay in or near the path of the door.
- Watch the moving door and keep people away until the door is completely opened or closed.
- **ELECTROCUTION:** To reduce the risk of electric shock, this equipment has a grounding-type plug that has a third (grounding) pin. This plug will only fit into a grounding-type outlet.
- If the plug does not fit into the outlet, contact a qualified electrician to install the proper outlet. Do not change the plug in any way. This operator is not equipped for permanent wiring.
- Contact a qualified electrician to install a suitable receptacle if one is not available.
- Installation and wiring must comply with your local building and electrical codes.
- If the power cord is damaged, it must be replaced by the manufacturer, its service agent, or a similarly qualified person in order to avoid a hazard.
- Connect the power cord only to properly earthed mains. If an extension lead must be used, make sure it is a 3-core lead and approved for 7 amp capacity.
- This unit is not user-serviceable. Unplug the power cord before removing the cover. Ensure that the power cord is attached clear of all moving parts. Ignoring these instructions can cause electric shock.

Please read these important safety rules

- These safety alert symbols indicate a personal safety or property damage instruction exists. READ THESE INSTRUCTIONS CAREFULLY.
- This automatic garage door operator is designed and tested to offer safe service provided it is installed and operated in strict accordance with the following safety rules.
- Failure to comply with the installation instructions and the safety warnings may result in death, serious personal injury, and/or property damage.

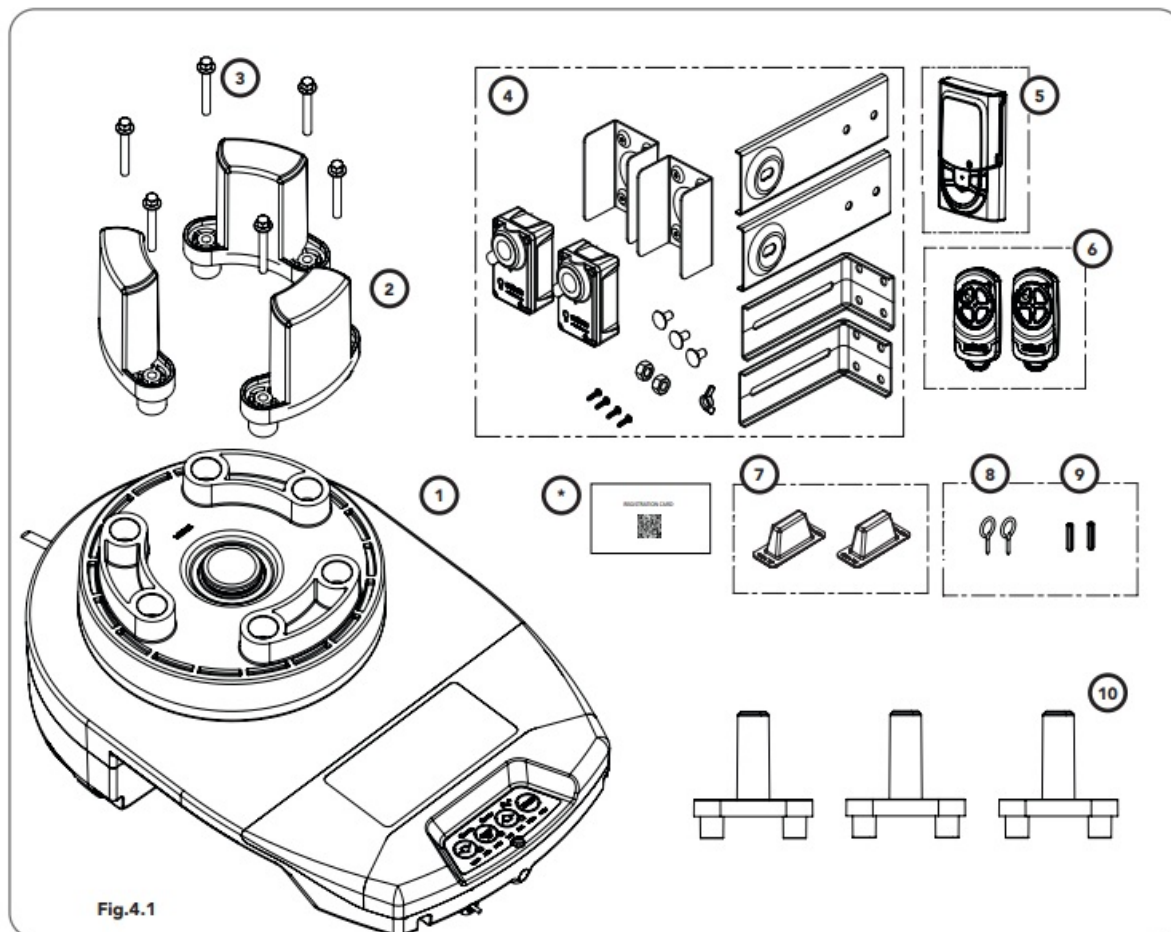
CAUTION:

- If your garage has no pedestrian entrance door, an emergency access device should be installed. This accessory allows manual operation of the garage door from outside in case of power failure.
- Keep the garage door balanced. Sticking or binding doors must be repaired. Garage doors, door springs, brackets, and their hardware are under extreme tension and can cause serious personal injury.
- Do not attempt any garage door adjustment. Do not use if repair or adjustment is needed. Call for professional garage door service.
- Position the Garage Door Operator so that the power plug is accessible when inserted into the power outlet.
- Install the wall transmitter in a location where the garage door is visible, but out of the reach of children at a height of at least 5 feet (1.53m).
- To avoid serious personal injury from entanglement, remove all unnecessary ropes or chains and disable any equipment such as locks which are not needed for powered operation.
- Do not wear rings, watches, or loose clothing while installing or servicing a garage door operator.
- Ensure the ladder is the correct type for the job and is on flat ground. We recommend the user has 3 points of

contact while on the ladder.

- Activate the operator only when the garage door is in full view, free of obstructions, and with the operator properly adjusted.
- The operator is not intended for use by young children or infirm persons without supervision.
- Keep transmitters away from children.
- Do not allow children to play with door controls.

Kit Contents



ITEM	DESCRIPTION	QTY
1	GDO-12 POWER DRIVE UNIT	1
2	JANUS INTERNAL GEAR ADAPTOR	3
3	HEX SERRATION HEAD SCREW M6 X 20	6
4	SAFETY BEAM KIT	1
5	PREMIUM WALL CONTROL	1
6	REMOTE CONTROL TRANSMITTER	2
7	LOCKING BAR COVERS	2

8	SCREW-EYE	2
9	PLASTIC WALL PLUG 6.9 X 25 (1")	2

ALTERNATIVE FORKS

10	UNIVERSAL INTERNAL GEAR ADAPTOR	3
----	---------------------------------	---

Operator Safety & Security

Your Door CAN NOT be used by the opener when:

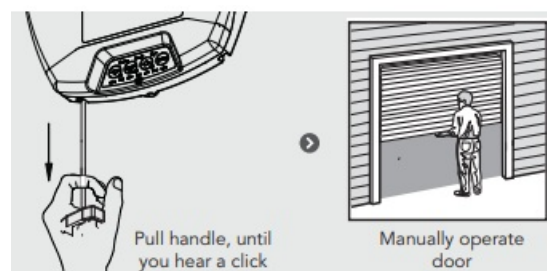
- **a.** There is a locking device installed.
- **b.** There is a power failure.

Your Door CAN be used when:

- **a.** There is an emergency, by disengaging the opener.
- **b.** There is a power failure, by disengaging the opener.

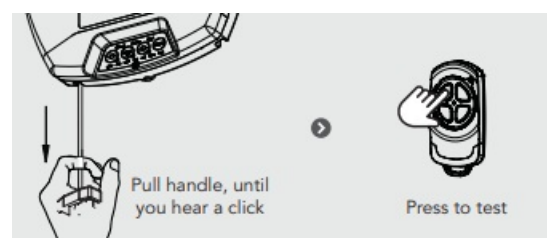
To Disengage the Opener:

It is recommended to disengage the door with the door in the closed position.



- **CAUTION:** When the opener is manually disengaged, the door is no longer locked. To lock the door manually, re-engage the opener after the door is closed.

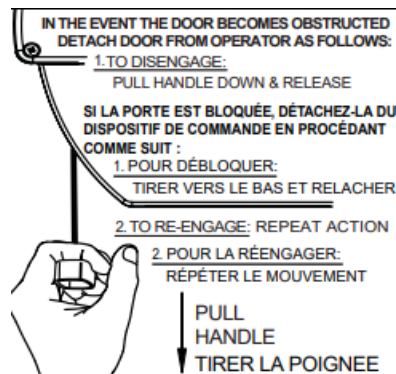
To Re-Engage the Opener:



- **WARNING!** Please test the manual release mechanism to ensure that the manual release is easy to operate. No more than 441b (20kg) of force should be required to disengage the door using the manual release cord.
- If excessive force is required reset the close limit position (Section 6.7.3 Resetting Door Limits).

MANUAL RELEASE

- **WARNING!** When operating the manual release (while the door is open) the door may fall rapidly due to weak or broken springs, or due to being improperly balanced.
- Do not disengage the operator to manual operation with children/persons or any objects including motor vehicles within the doorway.



Installation Instructions

- IMPORTANT INSTALLATION INSTRUCTIONS.
- **WARNING** – To reduce the risk of severe injury or death.

1. READ AND FOLLOW ALL INSTALLATION INSTRUCTIONS
2. Install only on a properly operating and balanced sheet door. An improperly balanced door has the potential to inflict severe injury. Have a qualified service person make repairs to cables, spring assemblies, and other hardware before installing the opener.
3. Remove all pull ropes and remove or make inoperative, all locks connected to the sheet door before installing the opener.
4. Where possible, install the door opener 2.14m (7 feet) or more above the floor. For products having an emergency release, mount the emergency release 1.83m (6 feet) above the floor and avoid contact with vehicles to avoid accidental release.
5. Do NOT connect the opener door operator to the source of power until instructed to do so.
6. **Locate the control button:**
 1. within sight of the door,
 2. at a minimum height of 1.53m (5 feet) above floors, landings, steps, or any other adjacent walking surface so small children are not able to reach it, and
 3. away from all moving parts of the door.
7. Install the Entrapment Warning Label next to the control button in a prominent location.
8. After installing the opener, the door must reverse within 2 seconds when it contacts a 1 ½-inch high object (or a 2 by 4 board laid flat) on the floor.
9. For products having a manual release, instruct the end-user on the operation of the manual release.
10. The following wiring instructions:

1. This operator is not equipped for permanent wiring. Contact a licensed electrician to install a suitable receptacle if one is not available.” and;
2. TO REDUCE THE RISK OF ELECTRIC SHOCK, THIS EQUIPMENT HAS A GROUNDING TYPE PLUG THAT HAS A THIRD (GROUNDING) PIN.
 - THIS PLUG WILL ONLY FIT INTO A GROUNDING-TYPE OUTLET. IF THE PLUG DOES NOT FIT INTO THE OUTLET, CONTACT A QUALIFIED ELECTRICIAN TO INSTALL THE PROPER OUTLET. DO NOT CHANGE THE PLUG

Pre-Installation Requirements

WARNING! It is vital for the safety of persons to follow all instructions. Failure to comply with the installation instructions and the safety warnings may result in serious personal injury and/or property and remote control opener damage.

- **NOTE:** Planetary chain equipment must be removed from the door before installation of GDO-12V1 HiRo™.

Door Operation

- The door must be in good operating condition. The maximum effort to move the door up or down, from stationary, should not exceed 200 Newtons (44 lb force) at the bottom rail.
- Lift the door to about halfway. When released, the door should stay in place supported entirely by its springs. Raise and lower the door to check for binding or sticking.
- The door may need to be serviced to meet these requirements – refer to the door manufacturer’s servicing instructions or contact an authorized dealer.

Unsuitable Door Types

- The fitting of an opener to doors with removable mullions or doors incorporating a wicket door is not recommended (Fig. 6.1.1).



Fig 6.1.1

Position

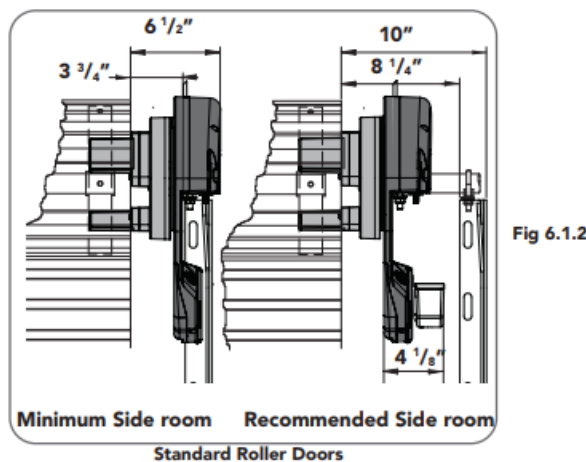
- The opener can be installed on either the right or left-hand side of the door (when viewed from inside the garage). The opener is factory set for right-hand side installation.
- This opener must be installed in a dry position that is protected from the weather. Moisture or corrosion damage is not covered by the Warranty.

Power Supply

- Properly earthed 3-pin single-phase power is required.
- **ELECTROCUTION!** This operator is not equipped for permanent wiring. Contact a qualified electrician to install a suitable receptacle if one is not available.
- **CAUTION:** Do not connect the opener to the power source until instructed to do so.

Sideroom

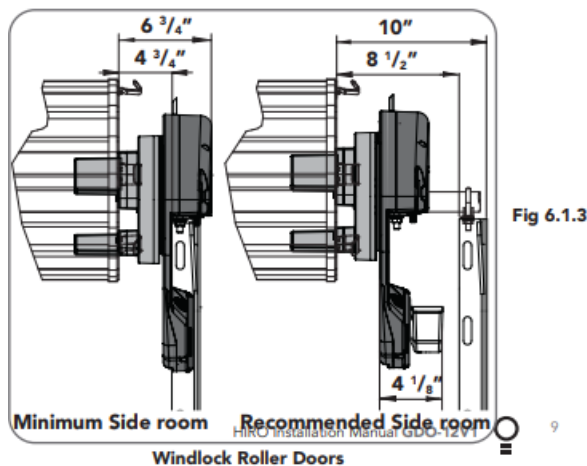
- The minimum side room required from the edge of the door curtain is 3 3/4" to the inside of the door bracket, and 6 1/2" to the wall. If the Battery Backup is to be fitted, at least 8 1/4" to the bracket is required.
- Therefore the recommended side room from the edge of the door curtain is 130mm to the inside of the door bracket, and 10" to the wall as per the diagram (Fig 6.1.2) Please refer to Fig 6.1.3 for Windlock Doors.



- **NOTE:** The door axle diameter must not exceed 1 3/8".

Forks

- Attach and secure the three (3) forks 2 or 10 with the six (6) hex serration head screws 3 to the drive unit 1 (Fig. 6.1.3). All forks must be used and properly engaged into the drum of the door for the opener to work effectively.



Preparation

a. Check the door's operation:

1. The door must travel smoothly and be easy to operate by hand.

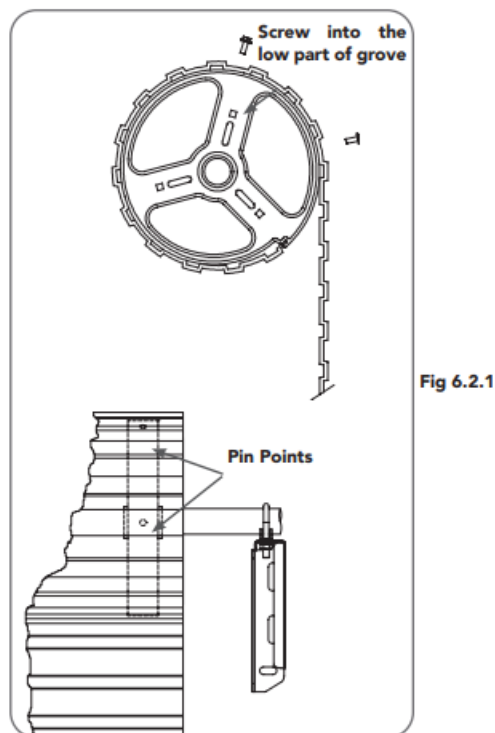
2. Adjust any tight or twisted guides.
3. Clean the guides if any oil or wax present is using a suitable white spirit. The only lubricant suitable for use on door guides is silicon spray. DO NOT use WD-40, RP-7, petroleum grease, or similar.
 - **b.** Install the locking bar covers 7 if there are locking bar holes in the guides.
 - **c.** Affix the warning labels supplied with this opener in a prominent place where they are visible.
 - **d.** Choose the side where the opener will be installed ensuring there is sufficient side room.

Check that the door is still balanced and smooth to operate. If it is not, the door may require servicing (refer to the door manufacturer's instructions).

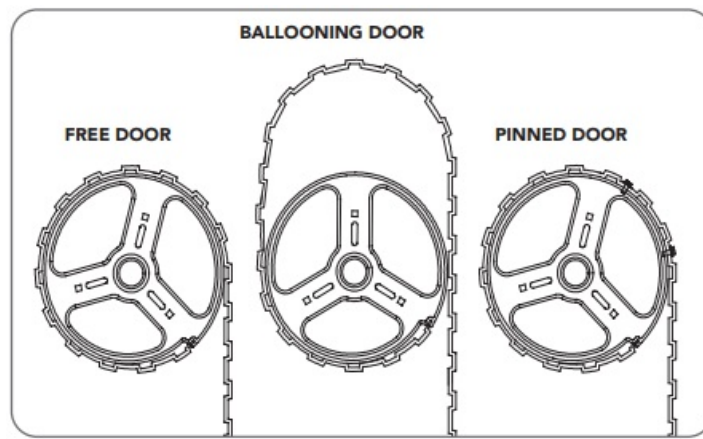
Pinning the Door to the Drum:

Pinning the door's curtain to its drum maintains security when the opener is closed. If the curtain is not pinned the door can be partially opened manually.

- **a.** Fully close the door.
- **b.** Mark a minimum of two (2) drill holes on the drum to each end of the door (Fig. 6.2.1).



- **c.** Drill holes using a 3.2mm (1/8") drill bit.
- **d.** Fit M10 x 32mm screws and washers (not supplied) to each of the four (4) holes. This screw should be positioned as low as possible in the groove, but make sure that it does not alter the curtain's normal lead into the guide.



Door prop preparation

- **a.** where the opener will be fitted, check that each nut securing the door axle is tightened (to a torque setting of 40Nm) to the bracket. (Fig. 6.2)

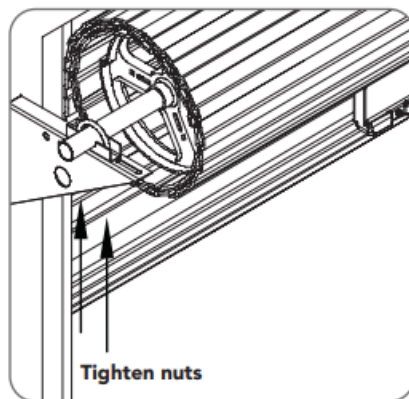


Fig 6.2.2

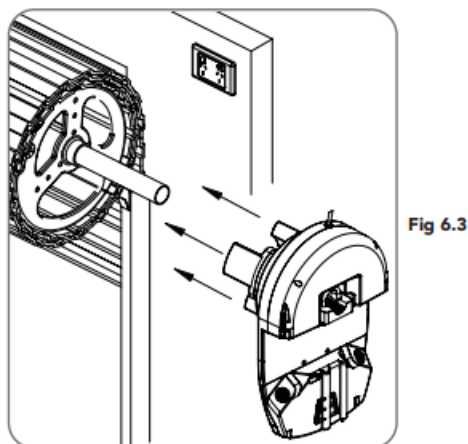
- **b.** Open the door completely and tie safety ropes around the door roll approximately 300 mm from each end. Do not tie the ropes too tight as damage to the curtain may ensue.
- **c.** At the end where the opener is to be fitted, support the door with a safe and suitable lifter.
- **WARNING!** Make sure the prop is snug under the door and is stable.
- **d.** At the end where the opener will be fitted, use a pen to mark the position of the saddle on the door bracket and the position of the door bracket on the wall to assist in reassembling.
- **e.** Remove the bolts and saddle from the door bracket.
- **f.** Raise the door of the door bracket and secure in the support.
- **NOTE** – For minimum side-room installations, the door may have to be taken down.

Fitting the Opener

Mounting The Opener

- **a.** Check the drive gear rotates freely, by pulling the string handle down (there will be a click) to disengage the opener. Then move the forks from side to side by hand
- **b.** Slide the opener over the door axle and into the drum of the door (Fig. 6.3).
- **c.** Ensure the internal gear is pushed in as far as possible (without interfering with the door curtain) and that the door drum's wheel spokes are completely between the opener's drive forks.
- **d.** Evenly tighten the supplied nuts on the clamp assembly of the opener to a torque setting of 40Nm.
- **e.** Remove the safety rope and door stand or prop.

- **f.** Connect the power cord to a suitable powerpoint, but DO NOT switch it on.
- **g.** Secure the power cord away from any moving object (e.g the door) with the cable clip supplied.
- **h.** With the opener still disengaged, pull the door up and down to make sure it runs freely.
- **NOTE** – If the manual release handle is more than 6 feet from floor level when the opener is installed, extend the handle to a height less than 6 feet.



- **WARNING!** The opener must not be used with a door incorporating a wicket door.
- **WARNING!** Garage doors, door springs, brackets, and their hardware are under extreme tension and can cause serious personal injury. Do not attempt any garage door adjustment.

Safety Beam Installation

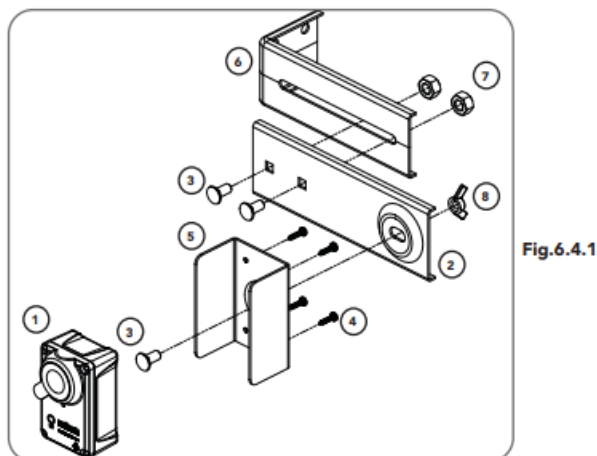
IMPORTANT NOTE: The Safety Beam must be installed and connected before the travel limits are set.

Safety Infra-Red Beam Kit (P/N 62047)

A Safety Beam extends across the door opening. This Safety Beam is designed to detect an obstruction while the door is closing and to send a signal to the door operator to reverse or stop the door movement. Install the Safety Beam indoors only.

Assembling the Mounting Bracket

- **a.** Place the round screw 3 through the Bracket 5. Attach the Safety Beam Transmitter (TX) using four (4) M3 x 5 Taptite screws 4 (Fig. 6.4.1).

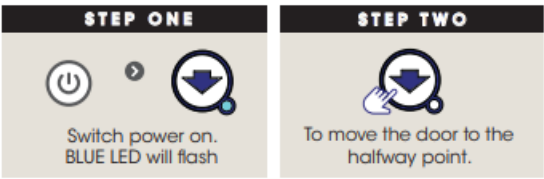


- **b.** Connect the mounting bracket 2 to the Bracket 5 using the wing nut 8 onto the round screw 3. Secure the adjustment bracket 6 to the mounting bracket 2 using two (2) screws 3 and nuts 7.
- **c.** Repeat steps (a) and (b) to assemble the Safety Beam Receiver (RX).

- Fig 6.4.3**

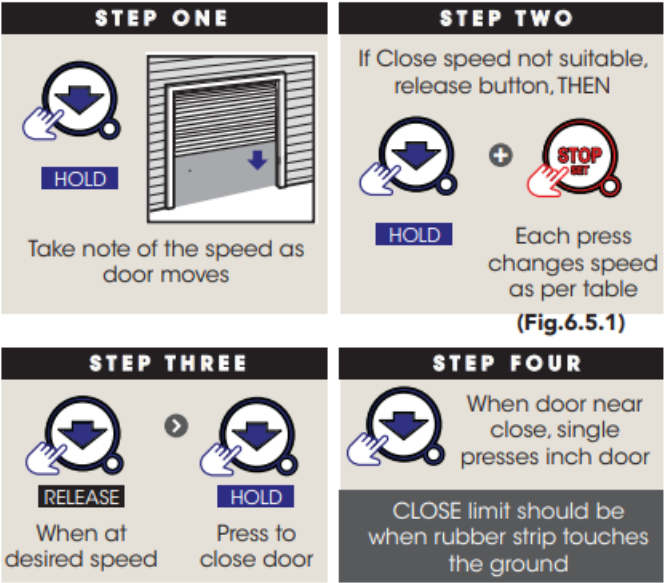
SETTING LIMITS

- When setting the Close limit, ensure the position is when the door makes first contact with the ground.
Alternatively, for the Open limit, the position should be at the height of the garage opening.



- HELPFUL TIP:** If the door moves in the opposite direction, press and hold the OPEN and CLOSE buttons at the same time (approx 3 seconds) until you hear a beep. This will reverse the direction of the motor.

CLOSE LIMIT POSITION



STEP THREE


RELEASE


HOLD

When at
desired speed

Press to
close door

STEP FOUR



When door near
close, single
presses inch door

CLOSE limit should be
when rubber strip touches
the ground

(Fig.6.5.1)

WARNING! In setting the close limit position, do not force the door into the floor with excessive force, as this can interfere with the ease of operation of the manual release mechanism.

STEP FIVE

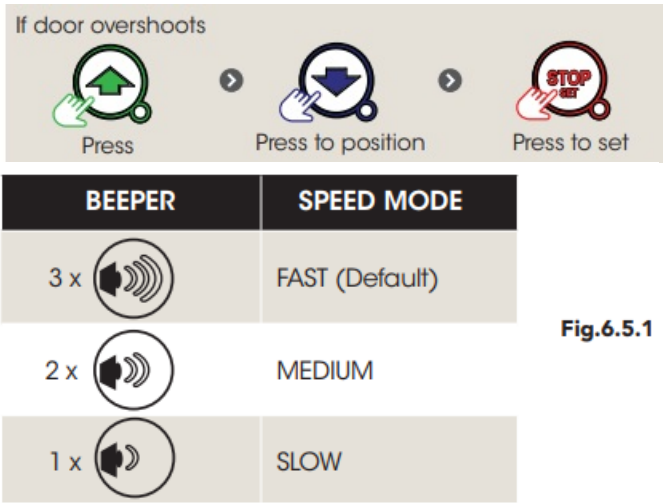
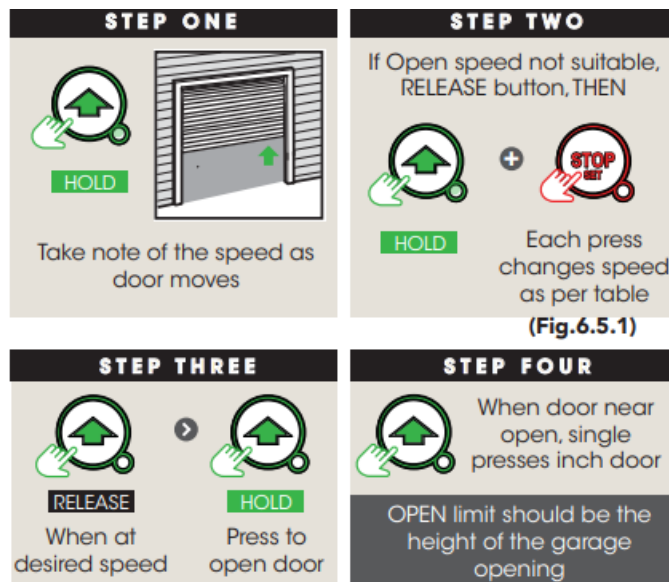


Fig.6.5.1

OPEN LIMIT POSITION



WARNING! The door will automatically close, open, and close again after the next step. Ensure that nothing is in the door's path.

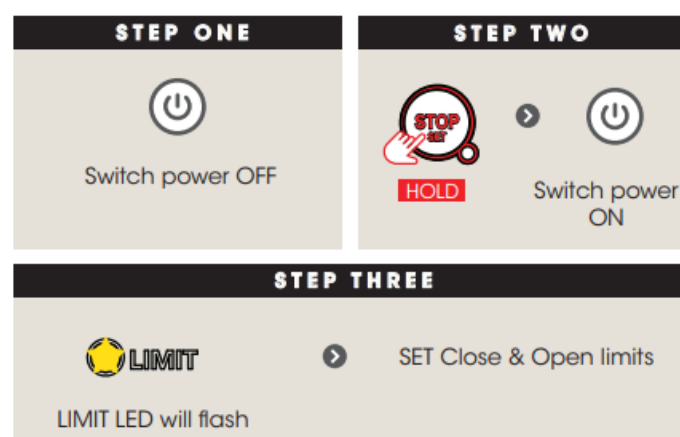
STEP FIVE



Setting Speed and Limits

NOTE: If unhappy with the speed or travel limit setting, restart this procedure by clearing the door limit positions as per below first.

Clearing the Door Limit Positions



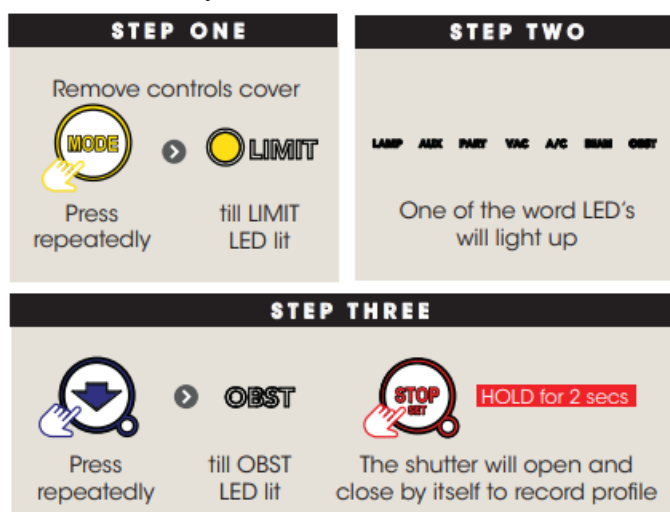
- **HELPFUL TIP:** Alternatively set travel limits using a Remote Control Transmitter, allowing free movement around the garage to better assess the desired limit positions. See Appendix D.
- **HELPFUL TIP:** The door can be set to a partially open position and programmed to a Remote Control Transmitter button. Refer to Appendix B.

Auto-Close

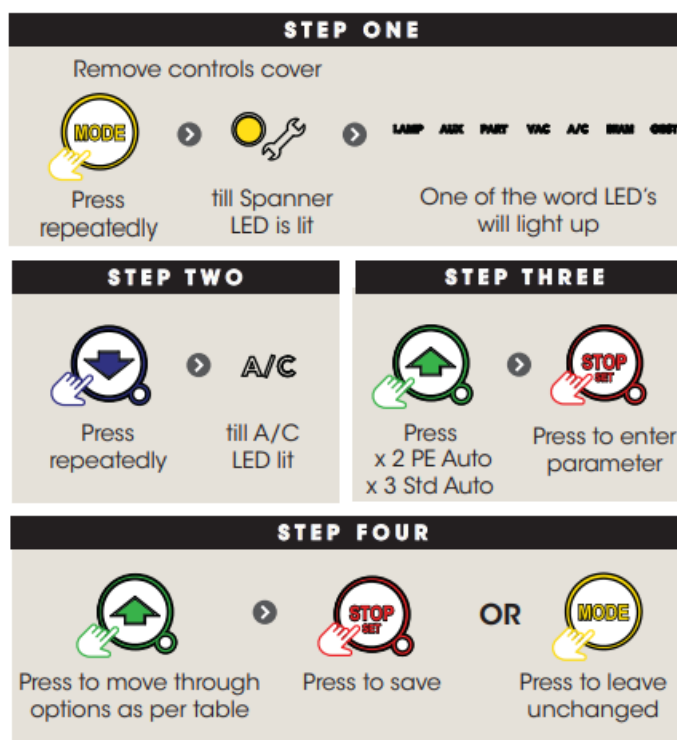
- Auto-Close mode is a function that automatically closes the door after a pre-set time. Safety beams must be installed to run the AutoClose function. There are two types of Auto-Close available:
 1. Standard auto-close – the door will Auto-Close after a programmed time. In this mode, the timer starts to countdown as soon as the door is fully open. This function is useful in case the safety beam does not get triggered.
 2. Safety Beam triggered auto-close – the door will auto-close after a programmed time. In this mode, the timer starts counting down only when the safety beam is triggered. ie car leaving the garage.

Re-profiling the Door

- Re-proling is a simple way of re-learning the travel characteristics of a previously set Limit Switch travel.
- Re-proling is used when travel characteristics change due to mechanical adjustments.
- **To initiate a re-proxy:** LIMITS must already be set.



TO ENABLE THE AUTO-CLOSE FUNCTION

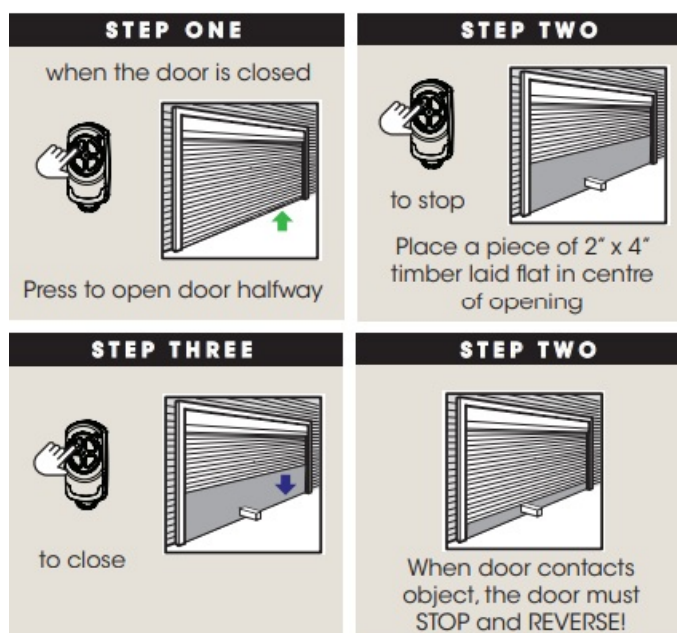


LED Indicators	Parameter	OPEN	OPEN & S TOP	STOP	CLOSE & STOP	CLOSE
A/C LED	A/C Function	90s	60s	30s	15s	OFF
A/C & BEAM LED'S	P.E A/C Function	60s	30s	15s	5s	OFF

Safety Testing & Accessories

- **HELPFUL TIP:** To conduct safety testing with ease precode a remote control button first. Refer to coding transmitters in the next section.

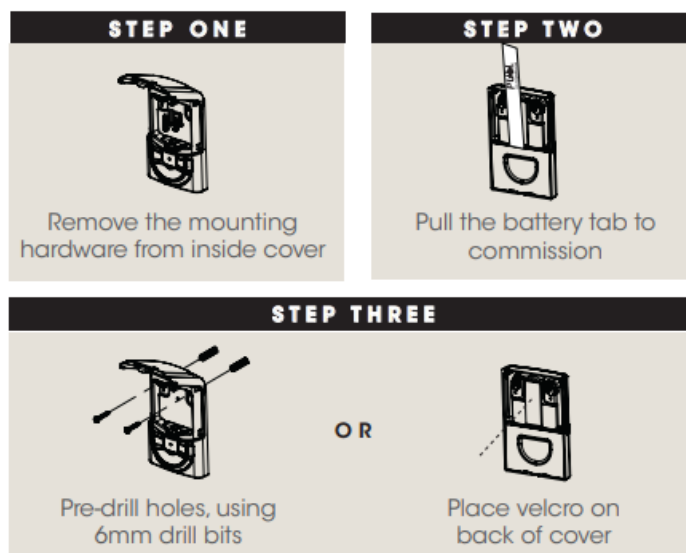
Testing the Close Cycle



IF THE DOOR DOES NOT PROPERLY REVERSE:

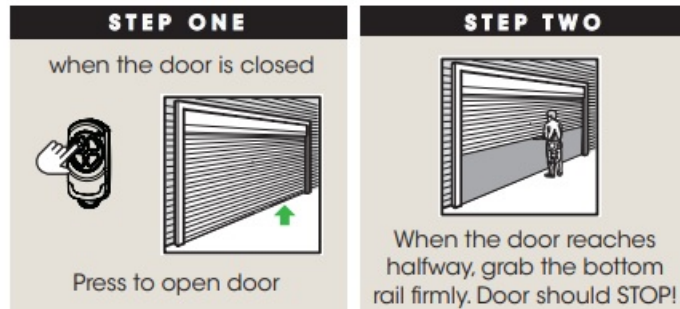
Check that the close limit position is where the door touches the ground. If the door STOPS but does not reverse, decrease the force pressure. (Appendix A)

Installation of Premium Wall Control



- Mount at least 5 feet off the ground, and make sure the door is visible from this location.
- Follow the instructions on how to set transmitter codes in the next section.
- **ELECTROCUTION!** Be mindful not to drill into existing wiring as this may result in serious harm and or death.
- **CAUTION:** Take care when testing the safety obstruction force.
- Excessive force may cause serious personal injury and/or property damage can result from failure to follow this warning.

Testing the Open Cycle



- **IF THE DOOR DOES NOT STOP:** The Force pressure may be excessive and need adjusting. Follow steps to decrease force pressure. (Appendix A)
- **IMPORTANT WARNING!** If the door is closing and is unable to re-open when obstructed, discontinue use. Do not use a door with faulty obstruction sensing. Repair fault and re-test before using.

IMPORTANT WARNING

1. LOCATE THE WALL-MOUNTED REMOTE CONTROL: WITHIN SIGHT OF THE DOOR.
2. AT MINIMUM HEIGHT OF 5 FEET ABOVE FLOORS, LANDINGS, STEPS, OR OTHER ADJACENT WALKING SURFACES SO SMALL CHILDREN ARE NOT ABLE TO REACH IT, AND
3. AWAY FROM MOVING PARTS OF THE DOOR.
4. PLACE THE ATTACHED ENTRAPMENT WARNING LABEL ON THE WALL NEXT TO WALL MOUNTED TRANSMITTER. USE AN ADDITIONAL MECHANICAL MEANS (PLATE, BOARD, ETC.), WHICH CAN SECURE THE LABELS TO SURFACES TO WHICH THE ADHESIVE WILL NOT ADHERE.
5. DO NOT REMOVE OR PAINT OVER THIS LABEL.

FCC STATEMENT

Coding Transmitters

TRANSMITTERS COMPLIANCE STATEMENT

TRANSMITTERS COMPLY WITH ALL UNITED STATES AND CANADIAN LEGAL REQUIREMENTS AS OF THE DATE OF MANUFACTURE. TO COMPLY WITH FCC PART 15 AND OR RSS 210 INNOVATION, SCIENCE AND ECONOMIC DEVELOPMENT CANADA RULES, ADJUSTMENT OR MODIFICATIONS OF THIS RECEIVER AND / OR TRANSMITTER ARE PROHIBITED, EXCEPT FOR CHANGING THE CODE SETTING OR REPLACING THE BATTERY. THERE ARE NO OTHER USER SERVICEABLE PARTS. TESTED TO COMPLY WITH FCC STANDARD FOR HOME OR OFFICE USE. THIS DEVICE CONTAINS LICENCE-EXEMPT TRANSMITTER(S)/RECEIVER(S) THAT COMPLY WITH INNOVATION, SCIENCE AND ECONOMIC DEVELOPMENT CANADA'S LICENCE-EXEMPT RSS(S). OPERATION IS SUBJECT TO THE FOLLOWING TWO CONDITIONS:

1. THIS DEVICE MAY NOT CAUSE INTERFERENCE.
2. THIS DEVICE MUST ACCEPT ANY INTERFERENCE, INCLUDING INTERFERENCE THAT MAY CAUSE UNDESIRE OPERATION OF THE DEVICE.

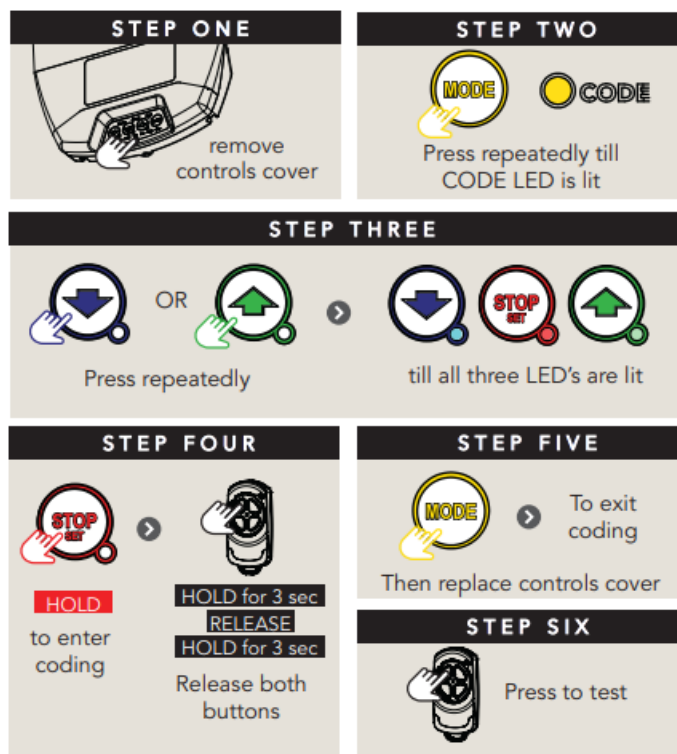
NOTE: THIS EQUIPMENT HAS BEEN TESTED AND FOUND TO COMPLY WITH THE LIMITS FOR A CLASS B DIGITAL DEVICE, UNDER PART 15 OF THE FCC RULES. THESE LIMITS ARE DESIGNED TO PROVIDE REASONABLE PROTECTION AGAINST HARMFUL INTERFERENCE IN A RESIDENTIAL INSTALLATION. THIS EQUIPMENT GENERATES, USES, AND CAN RADIATE RADIO FREQUENCY ENERGY AND, IF NOT INSTALLED AND USED PER THE INSTRUCTIONS, MAY CAUSE HARMFUL INTERFERENCE TO RADIO COMMUNICATIONS. HOWEVER, THERE IS NO GUARANTEE THAT INTERFERENCE WILL NOT OCCUR IN A PARTICULAR INSTALLATION. IF THIS EQUIPMENT DOES CAUSE HARMFUL INTERFERENCE TO RADIO OR TELEVISION RECEPTION, WHICH CAN BE DETERMINED BY TURNING THE EQUIPMENT OFF AND ON, THE USER IS ENCOURAGE TO TRY TO CORRECT THE INTERFERENCE BY ONE OR MORE OF THE FOLLOWING MEASURES:

- REORIENT OR RELOCATE THE RECEIVING ANTENNA
- INCREASE THE SEPARATION BETWEEN THE EQUIPMENT AND RECEIVER
- CONNECT THE EQUIPMENT TO AN OUTLET ON A CIRCUIT DIFFERENT FROM THAT TO WHICH THE RECEIVER IS CONNECTED.
- CONSULT YOUR LOCAL DEALER OR AN EXPERIENCED RADIO/TV TECHNICIAN FOR HELP.

Coding Transmitters

Remote Control Transmitter Button to Operate Door

The opener can only be operated from remote controllers that have been programmed into its memory. Up to 64 remotes can be programmed.



- **HELPFUL TIP:** Refer to the Appendix for Additional Transmitter coding functions.
- **WARNING!** The manufacturer is not responsible for any radio or TV interference caused by unauthorized modifications to this equipment.

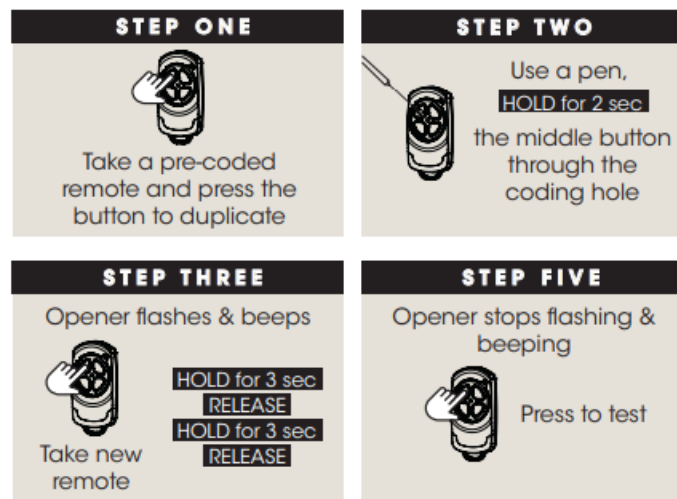
- Such modifications could void the user's authority to operate the equipment.

Erasing Programmed Codes

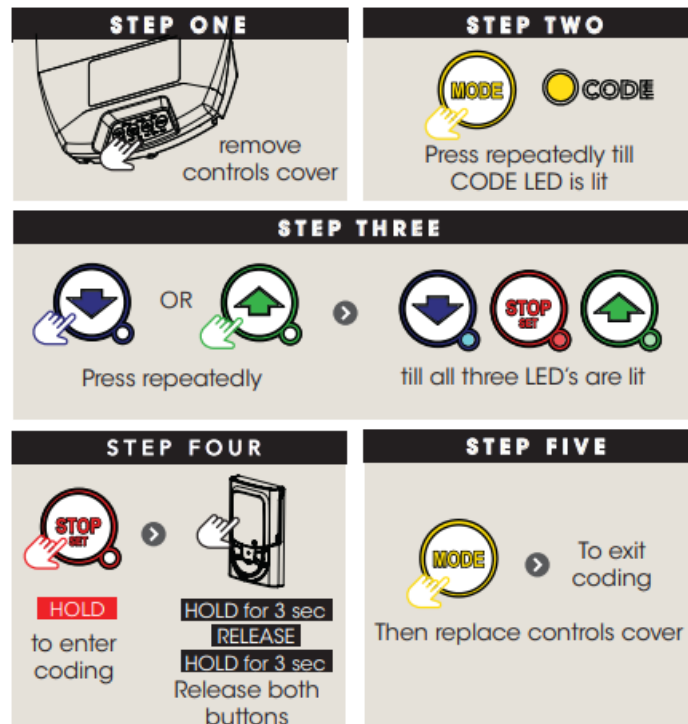


Selecting The Function To Be Coded

- **NOTE:** Only the function of the existing transmitter button can be assigned to the new transmitter. Please read the instructions before proceeding – there is a time-out facility for security reasons.
- **a.** Using the existing transmitter, operate the Shutter with the transmitter button which has the function to be coded (e.g. Button 1 has been coded with the OSC function assigned).
- **b.** If the button's function activates the Shutter (PART, OSC, CLS, STP, or OPN) waits for the Shutter to complete its cycle.
- Remotely coding works when you have a pre-coded remote control and are in the range of the opener.



Installing a wall button control



Attach Warning Labels

Placement of Warning Labels / Placards

- Attach the entrapment warning label (Residential) OR placard (Commercial) on the wall near the door control with tacks or staples at a minimum height of 5 feet above floors, landings, steps or another adjacent walking surface so small children are not able to reach it.
- DO NOT REMOVE OR PAINT OVER THIS PLACARD.



Residential Labels

Commercial Placards

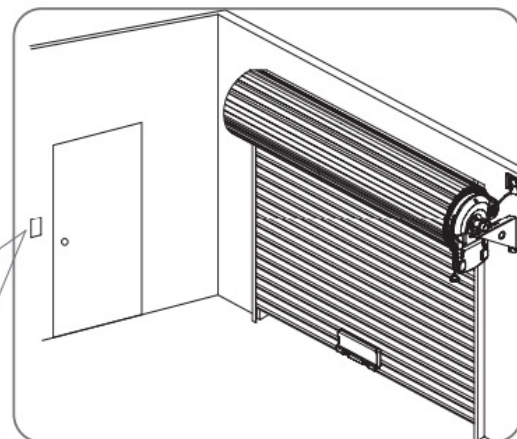


Fig.6.8.1

Operation Instructions

IMPORTANT SAFETY INSTRUCTIONS

WARNING! TO REDUCE THE RISK OF SEVERE INJURY OR DEATH.

1. READ AND FOLLOW ALL INSTALLATION INSTRUCTIONS.
2. NEVER LET CHILDREN OPERATE OR PLAY WITH DOOR CONTROLS. KEEP THE REMOTE CONTROL AWAY FROM CHILDREN.
3. ALWAYS KEEP THE MOVING DOOR IN SIGHT AND AWAY FROM PEOPLE AND OBJECTS UNTIL IT IS COMPLETELY CLOSED. NO ONE SHOULD CROSS THE PATH OF THE MOVING DOOR.
4. NEVER GO UNDER A STOPPED, PARTIALLY OPEN DOOR.
5. TEST DOOR OPENER MONTHLY. THE GARAGE DOOR MUST REVERSE ON CONTACT WITH A 1-1/2-INCH HIGH OBJECT (OR A 2 BY 4 BOARD LAID FLAT) ON THE FLOOR. AFTER ADJUSTING EITHER THE FORCE OR THE LIMIT OF TRAVEL, RETEST THE DOOR OPENER. FAILURE TO ADJUST THE OPENER PROPERLY INCREASES THE RISK OF SEVERE INJURY OR DEATH.
6. FOR PRODUCTS HAVING AN EMERGENCY RELEASE, WHEN POSSIBLE, USE THE EMERGENCY RELEASE ONLY WHEN THE DOOR IS CLOSED. USE CAUTION WHEN USING THIS RELEASE WITH THE DOOR OPEN. WEAK OR BROKEN SPRINGS ARE CAPABLE OF INCREASING THE RATE OF DOOR CLOSURE AND INCREASING THE RISK OF SEVERE INJURY OR DEATH.
7. KEEP GARAGE DOORS PROPERLY BALANCED. SEE THE OWNER'S MANUAL. AN IMPROPERLY BALANCED DOOR INCREASES THE RISK OF SEVERE INJURY OR DEATH. HAVE A QUALIFIED SERVICE PERSON MAKE REPAIRS TO CABLES, SPRING ASSEMBLIES, AND OTHER HARDWARE.
8. THIS PRODUCT CONTAINS A LITHIUM BUTTON/COIN CELL BATTERY. IF A NEW OR USED LITHIUM BUTTON/COIN CELL BATTERY IS SWALLOWED OR ENTERS THE BODY, IT CAN CAUSE SEVERE INTERNAL BURNS AND CAN LEAD TO DEATH IN AS LITTLE AS 2 HOURS.
ALWAYS COMPLETELY SECURE THE BATTERY COMPARTMENT. IF THE BATTERY COMPARTMENT DOES NOT CLOSE SECURELY, STOP USING THE PRODUCT, REMOVE THE BATTERIES, AND KEEP IT AWAY FROM CHILDREN. IF YOU THINK BATTERIES MIGHT HAVE BEEN SWALLOWED OR PLACED INSIDE ANY PART OF THE BODY, SEEK IMMEDIATE MEDICAL ATTENTION.
9. SAVE THESE INSTRUCTIONS.

How to Use Your Operator

- For maximum efficiency of your operator, your garage door must be in good operating condition.
- An annual service of your garage door-by-door professional is recommended.
- **CAUTION:** Activate the operator only when the door is in full view, free of obstructions, and with the operator properly adjusted. No one should enter or leave the garage while the door is in motion. Do not allow children to play near the door.

To Operate the opener:

- **a.** Press the programmed transmitter button until your door begins to move (usually 2 seconds). Make sure you can see the door when you use the transmitter (Fig 7.1.1).

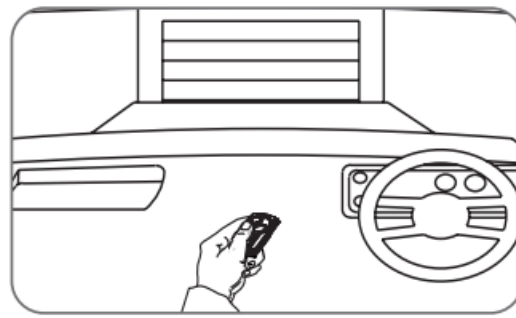


Fig.7.1.1

- **b.** If you are in a vehicle you should aim the transmitter through your windscreen as shown.
- **c.** Check that the door is fully open or closed before you drive in or away.
- **d.** If you press the transmitter whilst the door is moving the door will stop. The next press of the transmitter will move the door in the opposite direction.

Replacing the Battery: 3V Lithium Battery CR2032

BATTERY IN PREMIUM REMOTE CONTROL

- **Battery Type:** 1 x CR2032.

STEP ONE

Check Light Status Table

HOLD

Light Status	Battery
Solid	OK
Flashing	Replace
No light	Replace

STEP TWO

Use screwdriver to remove screws and open

STEP THREE

Use non-metallic object to push out.

- **WARNING!** Chemical Burn Hazard. Keep batteries away from children

BATTERY IN WALL MOUNTED TRANSMITTER

- **Battery Type:** 1 x CR2032

STEP ONE

Check Light Status Table

HOLD

Light Status	Battery
Solid	OK
Flashing	Replace
No light	Replace

STEP TWO

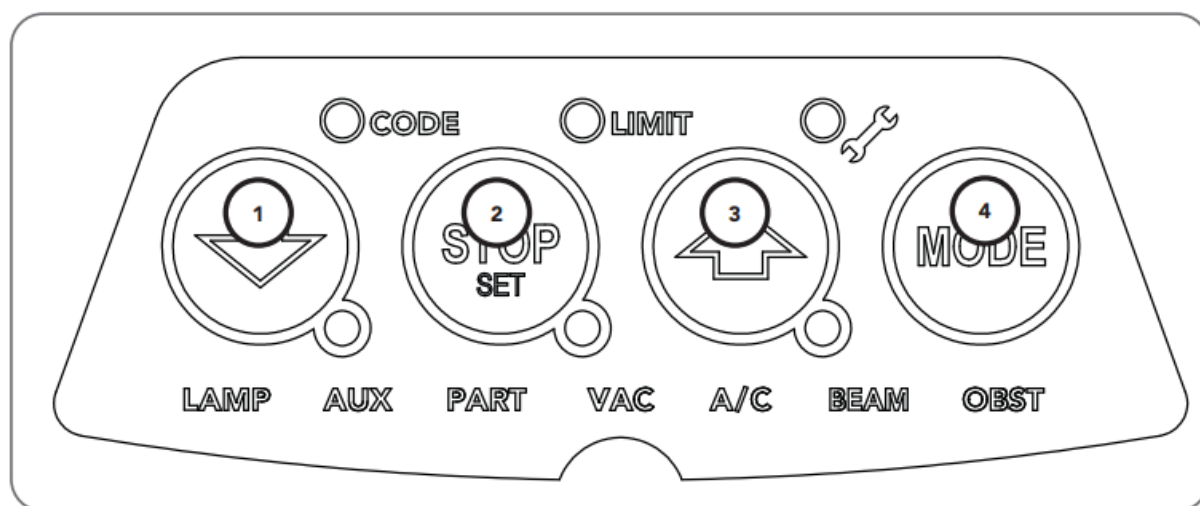
lift lid, slide up & off screws **OR** peel off from velcro

STEP THREE

Use pen to lift lid, then push and release battery

- Replace the battery and remount to a wall.
- Dispose of battery responsibly
- **WARNING!** The Battery shall be disposed of properly, including keeping them away from children. Even used batteries may cause injury.

User Operating Controls



Button	Function
1. BLUE DOWN ARROW	Close Button
2. RED STOP/SET	Stop / Set Button
3. GREEN UP ARROW	Open Button
4. MODE	Mode Selection Button

Door Status Indicators

Door Status Indicators	OPEN LED (green)	CLOSE LED (blue)	STOP (red)
Open	On		
Close		On	
Opening	Flashing		
Closing		Flashing	
Door travel stopped	Flashing	Flashing	Flashing
The door obstructed when opening	Flashing		On and door will stop
The door obstructed when closing		Flashing	Beeps while the door is moving
Opener overloaded	Alternating flashes	Alternating flashes	
Mains power interrupted	Rapid flashes		

- **HELPFUL TIP:** Refer to Appendix C for Additional LED Indicators

Disposal of Batteries

Correct Disposal of Batteries:

- Button Batteries contain toxic materials and should never be disposed of in the trash
- **WARNING!** Button cell lithium batteries MUST have their battery terminals covered BEFORE placing them in the box for will The been well do is trees must have their batte tem has coy redon.

Recycling all batteries will have other environmental and social benefits:

- Some batteries are less toxic but hazardous for other reasons.
- Lithium batteries can explode or catch fire in landfills, while button cells are dangerous if swallowed by children.
- Recycling offers safe and invitational retailing recovers of Wable materials such as lead, cadmium, Stella, zinc, manganese, cobalt, silver, plastics, and rare earth elements.
- Removal of batteries and other hazardous household products from household waste facilitates the recovery of organic materials through alternative waste technologies such as composting.
- Batteries and heavy metals are known contaminants in compost.
- The community supports recycling because it reduces waste to landfill and achieves environmental benefits.
- **WARNING!** The Battery shall be disposed of properly, including keeping them away from children. Even used batteries may cause injury.

In the United States of America;

- Call your local solid waste district to find out if your community has a collection program or upcoming event. Or call 1-800-CLEAN-UP (253-2687) or enter a ZIP code on this website to find the nearest recycling center.
- Information about most recyclable household waste, including household hazardous waste collection centers, is included.
- Search the area for recycling centers that accept single-use batteries using Earth911.com Recycling Search. Or call 1-800-CLEAN-UP (1-800- 253-2687), a service of Earth 911, to find the nearest recycling center.
- The website includes information about most recyclable household waste, including household hazardous waste collection centers.
- CalRecycle E-Waste Disposal Search Directory. Find an E-waste collector or recycler near you to recycle electronic devices that contain embedded batteries.
- Find Local Governmental Household Hazardous Waste Agencies. See the website for local governmental household hazardous waste agencies.

In Canada;

- Find a list of locations on the Call2Recycle.ca battery recycling website.
- Cal2Recycle E-Waste Disposal Search Directory. Find an E-waste collector or recycler near you to recycle electronic devices that contain embedded batteries.
- Find Local Governmental Household Hazardous Waste Agencies. See the website for local governmental household hazardous waste agencies.

User Maintenance Instruction

- **WARNING!** Run the Safety Testing procedures MONTHLY in Section 6.8 to ensure the garage door is fit for use.

Door Maintenance

- A poorly maintained door could cause fatal/serious injuries or damage to property.
- **a.** Frequently examine the door, particularly the cables, springs, and mountings for signs of wear, damage, or imbalance. DO NOT USE if repair or adjustment is needed since a fault in the installation or an incorrectly balanced door may cause injury.
- **b. Fasteners:** Check all screws, nuts, and bolts to ensure they are secure.
- **c. Spring Tension:** It is natural for springs to lose tension. Should the door become hard to operate or completely inoperative, contact a door professional.
- **d. Guide Tracks:** Clean the internal sections of the guide tracks every 3 – 6 months with a cloth dampened with mineral turps or methylated spirits.

If You Need a Service Call

- If the opener needs a service please call the dealer who installed the garage door opener (their contact details are usually on a sticker on the back of your garage door).
- BEFORE CALLING you should have the following information to assist in providing the appropriate service:
 1. Has anything happened since the opener last operated OK, e.g. a storm, a jolt to the door, etc.?
 2. What is the current light status on the opener?
 3. Manually disengage the door (Section 5).
 - How easy is it to manually open and close the door?
 4. What model is the opener? (Model no. information is located at the rear of the opener)
 5. Who installed the opener? (Dealer details should be on a sticker on the back of your garage door)
 6. When was it installed? (If known)
- **CAUTION:** Frequently examine the installation, in particular cables, springs, and mountings, for signs of wear, damage, or imbalance.
- DO NOT USE if repair or adjustment is needed since a fault in the installation or an incorrectly balanced door may cause injury.
- Adjustments should only be carried out by experienced persons, as this function can be dangerous if not performed under strict safety procedures.
- **WARNING!** Failure to maintain your garage door may void the warranty on your garage door operator.

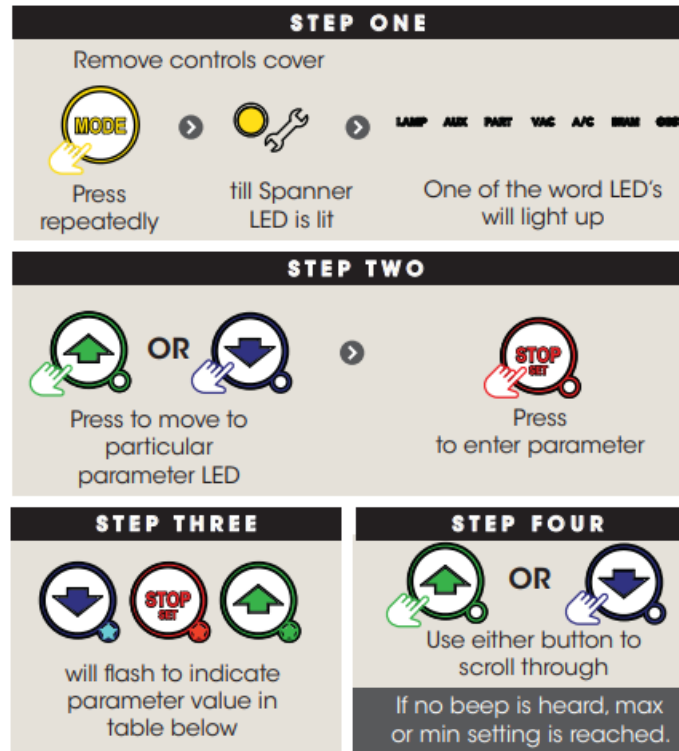
Troubleshooting

Symptom	Possible cause	Remedy
---------	----------------	--------

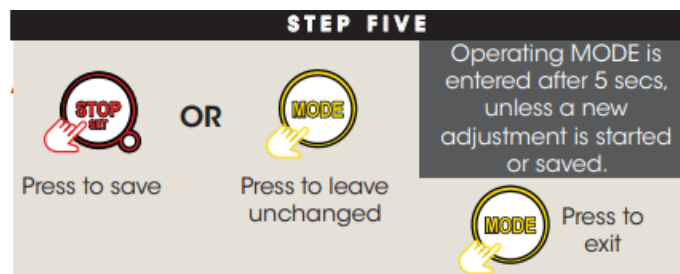
The opener does not work from the Remote Control Transmitter	<p>Garage door in poor condition e.g. springs may be broken</p> <p>The opener does not have power</p> <p>The battery in the Remote Control is flat</p> <p>The opener has been put into "Vacation Mode"</p> <p>The Remote Control button is not programmed to operate the door.</p> <p>The door Code LED is flashing yet the opener is not working.</p>	<p>Check the door's operation – see monthly maintenance (Section 8)</p> <p>Plug a device of similar voltage (e.g. a hairdryer) into the powerpoint and check that it is OK</p> <p>Replace the battery (Section 7.1.2)</p> <p>Turn off "Vacation Mode"</p> <p>(Appendix E, Vacation Mode step E.5)</p> <p>See coding transmitter procedure (Section 6.7)</p> <p>Ensure the correct button on the transmitter is being pressed.</p>
The motor is running but the door remains stationary	The opener is disengaged	Re-engage the opener (Section 5)
The transmitter range varies or is restricted	<p>Variations are normal depending on conditions e.g. temperature or external interference</p> <p>The battery life is exhausted</p> <p>Position of the Remote Control Transmitter in the motor vehicle</p>	<p>See instructions for the correct use of the transmitter (Section 7.1.1)</p> <p>Refer to battery status (Section 7.1.2)</p> <p>Change the position (Section 7.1)</p>
The door reverses for no apparent reason	<p>This may occur occasionally from environmental conditions such as areas that are windy, dusty, or have extreme temperature changes.</p> <p>If Safety Beams are installed they may be partially obstructed.</p>	<p>Put the door into the manual (Section 5, take note of the CAUTION) and contact (800) 934 9892.</p> <p>Ensure the beam path is not obstructed. If continues, contact your optional extras dealer.</p>
The door opens but will not close	Safety Beam (Optional Accessory) not operating correctly	Contact your optional extras dealer for support.
The Open (Green) LED and Close (Blue) LED are flashing alternatively	Opener is overloaded	Discontinue use and contact (800) 934 9892 for support.
The Open (Green) LED continues to flash	The door obstructed when opening	Clear away any obstructions and the test door opens correctly. (If the door is damaged, contact a door professional).
The Close (Blue) LED continues to flash	<p>The door obstructed when closing</p> <p>Limits may be cleared</p>	<p>Clear away any obstructions and the test door closes correctly. (If the door is damaged, contact your dealer).</p> <p>Remove all power sources. Wait till all lights are out (10-15 secs), then reconnect power. If the Blue LED is flashing, limits are not set.</p> <p>See Section 6 to set LIMITS.</p>

Appendix

A – Adjustment Mode Parameters

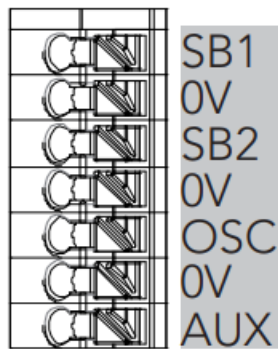


LED Indicators	Parameter	OPEN	OPEN & STOP	STOP	CLOSE & STOP	CLOSE
LAMP LED	Light Time	180s	120s	60s	30s	0s
AUX LED	Aux Time / Mode	Toggle	60s	30s	1s	Mimic Light
A/C LED	A/C Function	90s	60s	30s	15s	OFF
A/C & BEAM LED'S	P.E A/C Function	60s	30s	15s	5s	OFF
OBST LED	Margin Setting	20 units	15 units	12 units	9 units	7 units
OPEN / STOP / CLOSE LED'S	PG3 custom setting	When all three lights are illuminated a custom setting is in place. Parameters can be still adjusted to those listed above.				

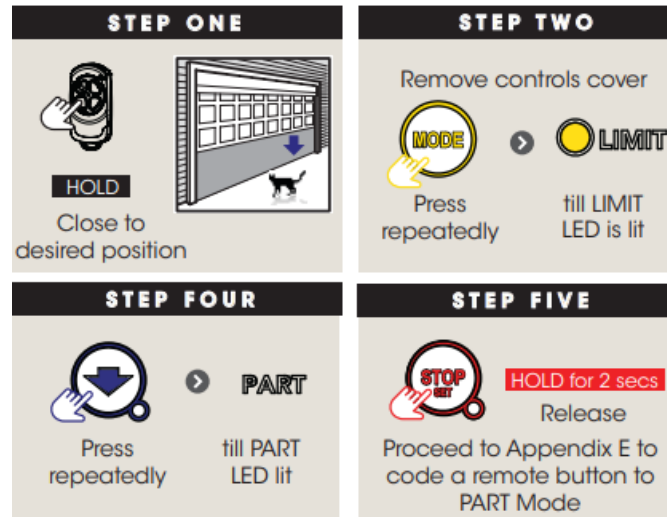


Auxiliary Output

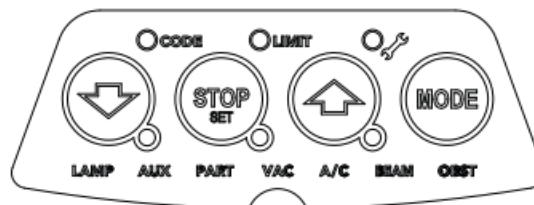
- The auxiliary output can be used to control an alarm or another garage door opener. A valid transmission from the pre-coded transmitter will cause the auxiliary output to pulse for approximately 1 (one) second.
- The maximum DC voltage must not exceed 35 volts DC. The maximum current must not exceed 80 ma.



B – Setting the PET Mode position



- When activated, PET mode drives the door to a preset position from the closed position, therefore allowing a pet or parcel to go under the door.



C – LED Status

The below table displays the status of the opener when LEDs are activated.

LED Indicators		Status
CODE LED		Flickers with transmitter activity or indicating transmitter may not be coded to the opener.
LIMIT LED		Indicates the opener is in Limit Set Mode
SPANNER LED		Indicates the opener is in Adjustment Mode
CLOSE / STOP / OPEN LED'S		Indicate the shutter status currently in use (except during power failure, auto-close, and part open)
LAMP LED		Only illuminates during the Adjustment Mode to change the light time parameter
AUX LED		Indicates the AUX output is activated, once a transmitter has been coded to the AUX function.
PART LED		Indicates the shutter is in one of the part open positions.
VAC LED		Indicates the Vacation Mode is active
A/C LED	On STEADY	means the auto-close timer was paused due to the beam being blocked.
	FLASHES	to indicate the auto-close timer is running
BEAM LED	On STEADY	when a beam is blocked.
	FLASHES	when there is a P.E Fault
OBST LED	On STEADY	Obstruction was detected. If the shutter opened then obstruction was while closing and vice versa
	FLASHES	Stall / Overload detected. If the shutter opens then stalls/overloads while closing and vice versa.
SPANNER LED	On STEADY	Indicates the service is due. Beeps three times at the start of a drive cycle
	MAIN LIGHT FLASHES	Two flashes indicate that the battery is faulty. Five Flashes indicates that periodic maintenance is due after 3000 drive cycles.
	FLASHES + OBST LED	Indicates a fault. The details is indicated on the other LEDs. Indicates current sensor fault
	+ OPEN LED + CLOSE LED	Indicates failed to profile open travel – during limit setting only indicated failed to profile close travel – during limit setting only

D – Setting Limits via Transmitter

The Dominator Hiro has the ability to set travel limits using a transmitter, allowing free movement around the garage to better assess the desired limit positions. In order to use a transmitter, it must first have at least one of its buttons coded to the shutter controller. The function assigned to the transmitter's buttons is of no concern here as the buttons are temporally assigned to OPEN, SET, CHANGE DIRECTION, and CLOSE (Fig. D.1).

D.1 code a transmitter for limit setting

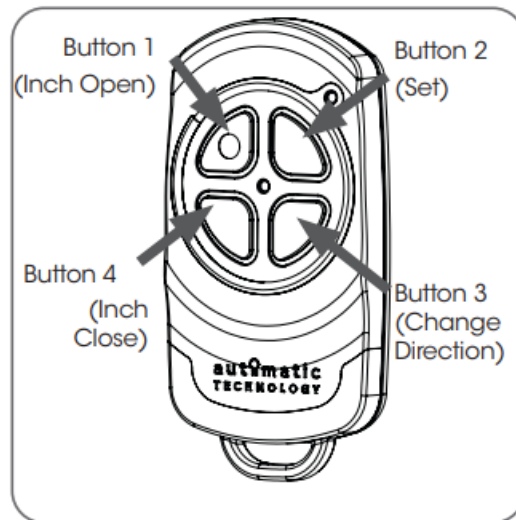
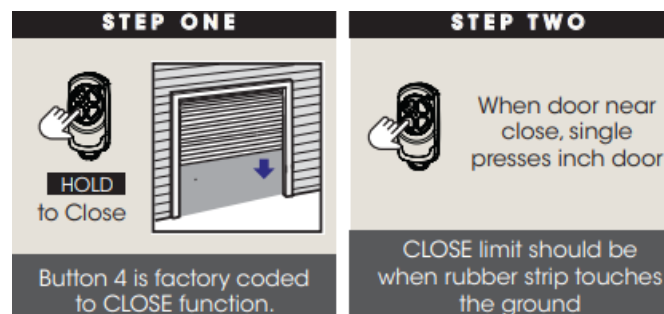


Fig: D.1

The SPEED setting on the opener CAN NOT be adjusted when setting limits via the transmitter. Follow section 12.1 to set limits and adjust speed.



CLOSE LIMIT POSITION

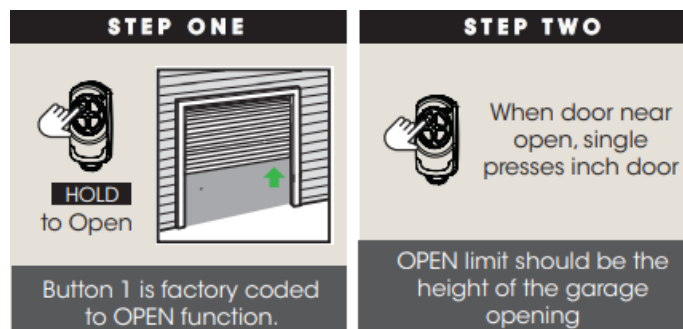


WARNING! In setting the close limit position, do not force the door into the floor with excessive force, as this can interfere with the ease of operation of the manual release mechanism.

STEP THREE

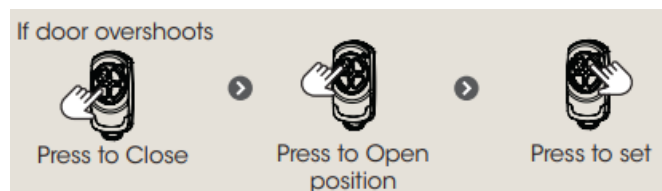


OPEN LIMIT POSITION



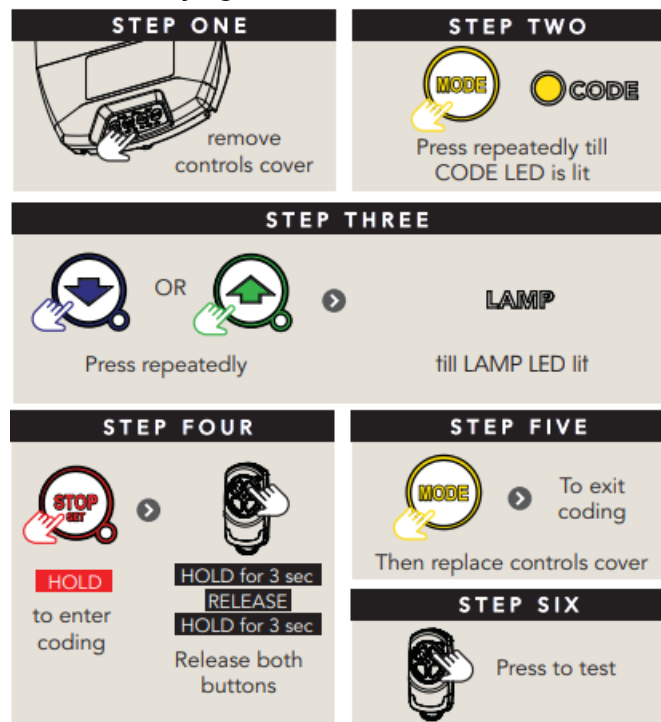
WARNING! The door will automatically close, open, and close again after the next step. Ensure that nothing is in the door's path.

STEP THREE

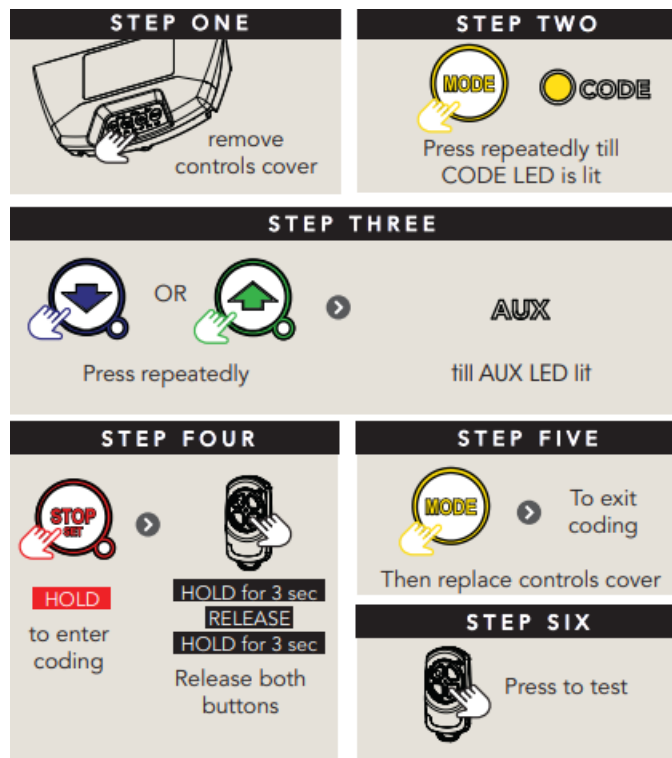


Additional Remote Control Functions

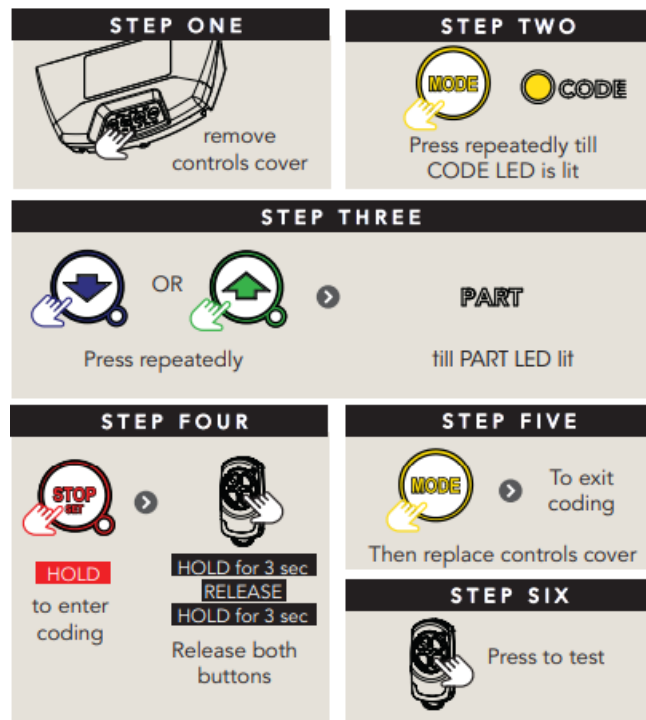
E.1 remote control button to the courtesy light



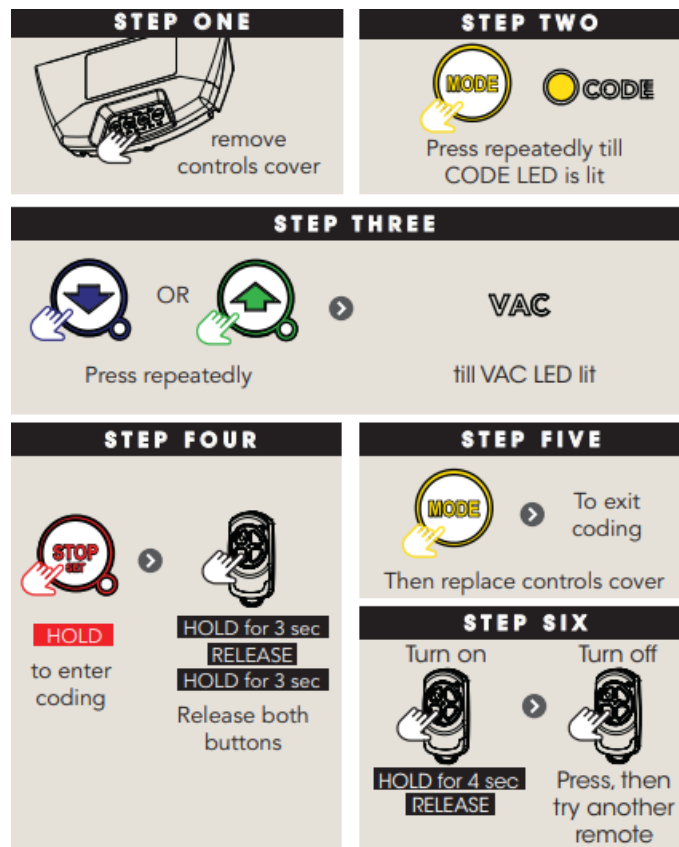
E.2 remote control button to enable AUX output



E.3 remote control button to operate PART Mode



E.4 remote control button to activate vacation mode



- Automatic Technology America
- 3626 North Hall Street, Suite 610, Dallas, TX 75219, United States of America
- P: +1 800 934 9892 W: www.ata-america.com

Documents / Resources

	<p>automatic TECHNOLOGY HIRO GDO-12AM Battery Backup for Hiro Operator [pdf] Installation Guide</p> <p>HIRO GDO-12AM Battery Backup for Hiro Operator, HIRO GDO-12AM, Battery Backup for Hiro Operator, Backup for Hiro Operator, Hiro Operator</p>
--	---

References

- [Automatic Technology: Automatic Garage Door Openers | Gate Openers - Automatic Technology US](#)
- [User Manual](#)

[Manuals+](#), [Privacy Policy](#)

This website is an independent publication and is neither affiliated with nor endorsed by any of the trademark owners. The "Bluetooth®" word mark and logos are registered trademarks owned by Bluetooth SIG, Inc. The "Wi-Fi®" word mark and logos are registered trademarks owned by the Wi-Fi Alliance. Any use of these marks on this website does not imply any affiliation with or endorsement.