



automatic TECHNOLOGY GDO-6 Easy Roller Rolling Door Openers Instruction Manual

[Home](#) » [automatic TECHNOLOGY](#) » automatic TECHNOLOGY GDO-6 Easy Roller Rolling Door Openers Instruction Manual 

Contents

- [1 automatic TECHNOLOGY GDO-6 Easy Roller Rolling Door Openers](#)
- [2 USER OPERATING CONTROLS](#)
- [3 MANUAL DOOR OPERATION](#)
- [4 CODING A REMOTE CONTROL](#)
- [5 CHANGING A BATTERY](#)
- [6 SMART PHONE CONTROL](#)
- [7 TROUBLESHOOTING](#)
- [8 CARING FOR YOUR OPENER](#)
- [9 NEED A SERVICE CALL](#)
- [10 Documents / Resources](#)
 - [10.1 References](#)
- [11 Related Posts](#)

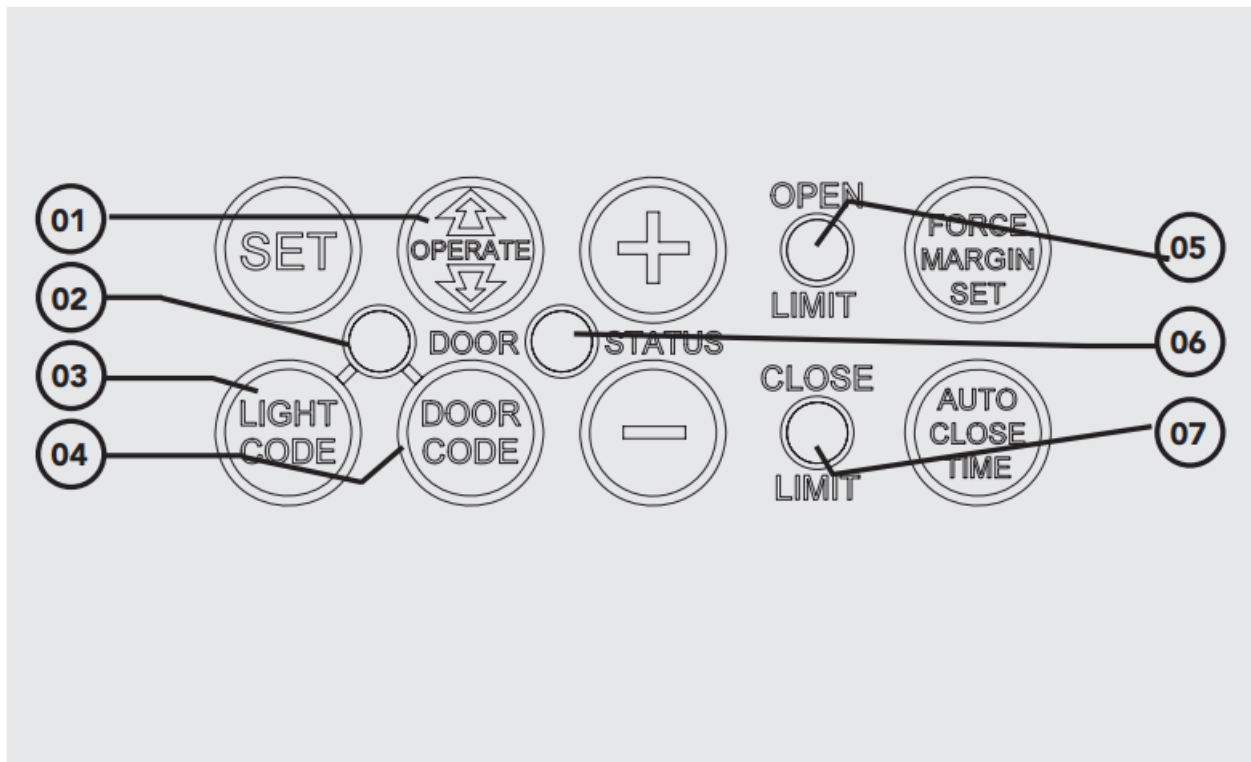


AUTOMATIC

automatic TECHNOLOGY GDO-6 Easy Roller Rolling Door Openers

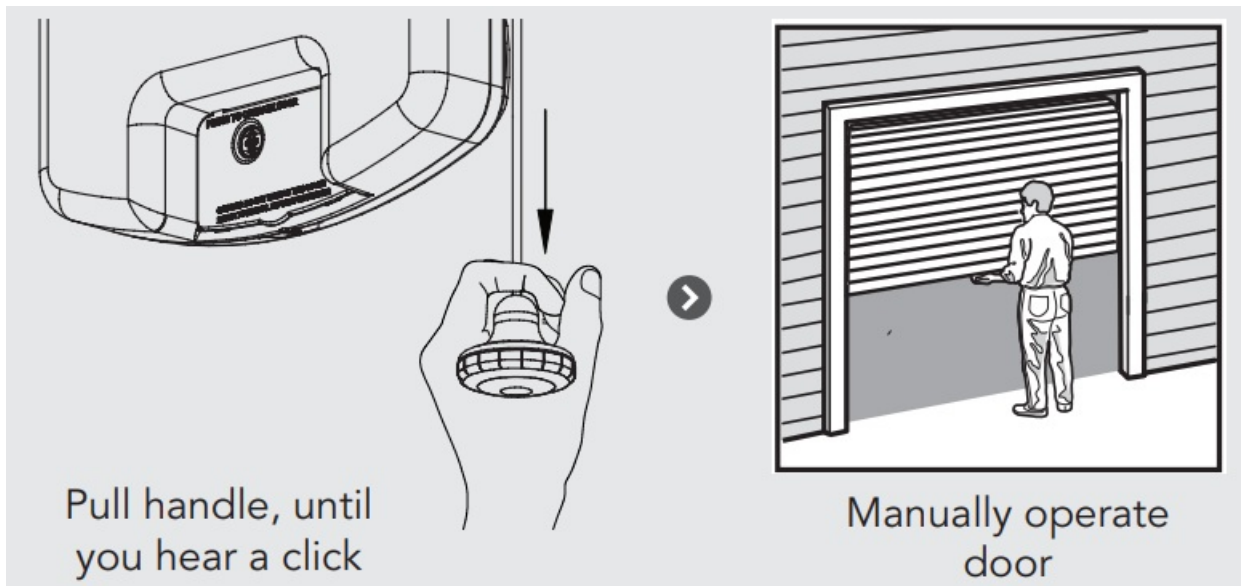


USER OPERATING CONTROLS



Button	Function
01	Open / Stop / Close
02	Flashes when a code is being stored or when a remote control button is pressed.
03	For storing or erasing remote control button code to switch the courtesy light on or off.
04	Is used for storing or erasing remote control buttons for door operation.
05	Flashes as the door opens and remains on when opened.
06	Illuminates when Service is due.
07	Flashes as the door closes and remains on when closed.

MANUAL DOOR OPERATION

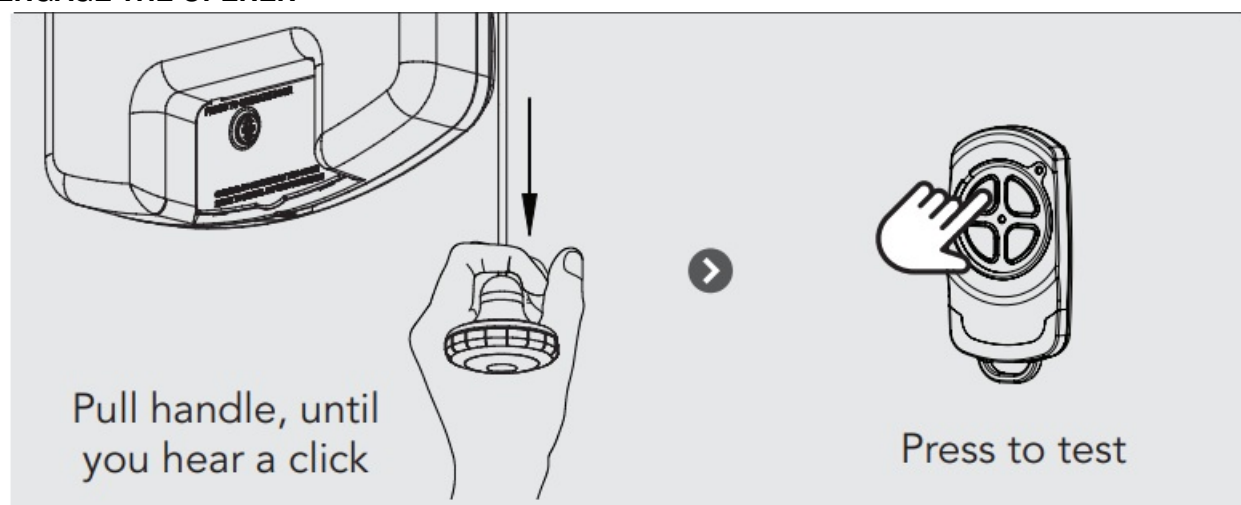


TO DISENGAGE THE OPENER

It is recommended to disengage the door with the tip door in the closed position.

CAUTION: When the opener is manually disengaged, the door is no longer locked. To lock the door manually, re-engage the opener after the door is closed.

TO ENGAGE THE OPENER



WARNING: Please test the manual release mechanism to ensure that the manual release is easy to operate. No more than 20kg of force should be required to disengage the door using the manual release cord. IF excessive force is required, contact your dealer.

CODING A REMOTE CONTROL

The opener can only be operated from remote controllers that have been programmed into its memory. Up to 64 remotes can be programmed.

CODING A REMOTE CONTROL INTO OPENER

STEP ONE



Switch power on

STEP TWO



remove
controls cover

STEP THREE



HOLD

Opener beeps

HOLD for 3 sec

RELEASE

HOLD for 3 sec

Release both
buttons

STEP FOUR



Press to test

REMOTELY CODING A REMOTE CONTROL

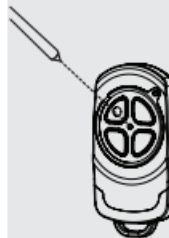
Remotely coding works when you have a pre-coded remote control and are in range of the opener.

STEP ONE



Take a pre-coded
remote and press the
button to duplicate

STEP TWO



Use a pen,

HOLD for 2 sec

the middle button
through the
coding hole

STEP THREE

Opener flashes & beeps



Take new
remote

HOLD for 3 sec

RELEASE

HOLD for 3 sec

RELEASE

STEP FIVE

Opener stops flashing &
beeping



Press to test

CHANGING A BATTERY

Battery Type: 1 x CR2032.

STEP ONE

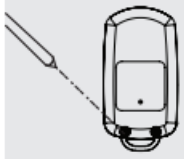


Check Light Status Table

HOLD

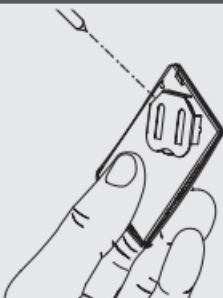
Light Status	Battery
Solid	OK
Flashing	Replace
No light	Replace

STEP TWO



Use screwdriver to remove screws and open

STEP THREE



Use non-metallic object to push out.

WARNING: The battery is hazardous and must be kept out of reach of children. The battery can cause severe or fatal injuries within 2 hours or less if swallowed or placed inside any part of the body. If you suspect the battery has been swallowed or placed inside any part of the body, SEEK IMMEDIATE medical attention.

BEFORE YOU START



Download the ATA App
to your smartphone



Ensure limits are
set prior to connecting
to wifi



The home WiFi router
is within range of
opener

STEP ONE



Connect the Smart
Hub to power.



Go to phone settings, then
WiFi and select
(ATA000000)

STEP TWO



Open APP
and click START



Set up new
Smart Hub in app

STEP THREE



Smart Hub connect
appears, ensure WiFi
network = (ATA000000)



Follow
instructions in the app



Upon completion,
test the opener
through the
ATA App.

SMART PHONE CONTROL

(require Smart Hub)

The Smart Phone Control works via your home's WiFi network. Initial set up involves linking your phone app and smart opener to your home network.

WARNING: This device allows for operation of the door when not in line-of-sight of the door and opener. The door may operate unexpectedly, therefore do not allow anything to stay in or near the path of the door.

TROUBLESHOOTING

Symptom	Possible cause	Remedy
The opener does not work from the remote	The opener does not have power	Plug a device of similar voltage (e.g. a hairdryer) into the power point and check it is O K.
	The battery in the remote control is flat	Replace the battery
	The remote button is not programmed to operate the door.	Code in the remote control button
	Door Code LED is flashing yet the opener is not working.	Ensure the correct button on the transmitter is being pressed.
One remote works but the other/s do not	Faulty remote control	Replace remote control
	Flat battery	Replace battery
The motor is running but the door remains stationary	The opener is disengaged	Re-engage the opener
The remote range varies or is restricted	Variations are normal depending on conditions e.g. temperature or external interference	Make sure you can see the door when you use the remote control
	The battery life is exhausted	Check the battery status as per section 4 of this guide
The opener light does not work.	LED has failed	Contact dealer to organise LED to be changed.
The door	If Safety beams are	Ensure the beam path is not
reverses for	installed they may be	obstructed. Check the
no apparent	partially obstructed	alignment of the beams
reason		
The door stops or moves very slowly	Garage door in poor condition e.g. springs may be broken	Check the door's operation
	(Optional Battery Back Up Accessory) the batteries may have little OR no charge	Connect mains power and leave the batteries to charge. The batteries may take 24 to 48 hours to reach their maximum charge capacity.

CARING FOR YOUR OPENER

Preventative servicing of your garage door and opener, is important. Your garage door is made up of numerous moving parts designed to lift and lower your door safely and efficiently. Ongoing preventative servicing ensures that your door continues to function within factory specifications, greatly reduces the risk of failure and repair bills down the track and ensure you maintain your Warranty. Refer to your Owners Opener Handbook for your service schedule available [HERE](#). Refer to the installation manual for monthly testing procedures in Section 13 to ensure

garage door is fit for use available [HERE](#). Online warranty details are available [HERE](#).

NEED A SERVICE CALL

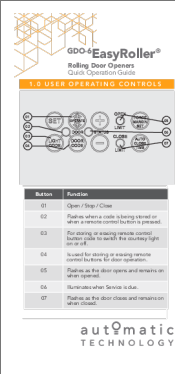
If the opener needs a service please call the dealer who installed the garage door opener (their contact details are usually on a sticker on the back of your garage door).

For product assistance, general enquiry or more information, please visit:

ata-aust.com.au

or call 1300 133 944.

Documents / Resources



Button	Function
01	Open/Stop/Close
02	Push to when a roller is being moved or when a roller is being moved to a new position.
03	For clearing or moving rollers (control button) push to when a roller is being moved or when a roller is being moved to a new position.
04	Acoustic for moving a roller (control button) push to when a roller is being moved or when a roller is being moved to a new position.
05	Push to when a roller is being moved or when a roller is being moved to a new position.
06	Acoustic for moving a roller (control button) push to when a roller is being moved or when a roller is being moved to a new position.
07	Push to when a roller is being moved or when a roller is being moved to a new position.

[automatic TECHNOLOGY GDO-6 Easy Roller Rolling Door Openers](#) [pdf] Instruction Manual

GDO-6 Easy Roller, Rolling Door Openers, GDO-6 Easy Roller Rolling Door Openers, Door Opener, Openers

References

-  [Automatic Garage Door Openers and Gate Openers - Repairs - ATA](#)