



# automatic TECHNOLOGY GDO-12Hir High Rolling Door Opener Instruction Manual

[Home](#) » [automatic TECHNOLOGY](#) » automatic TECHNOLOGY GDO-12Hir High Rolling Door Opener Instruction Manual 

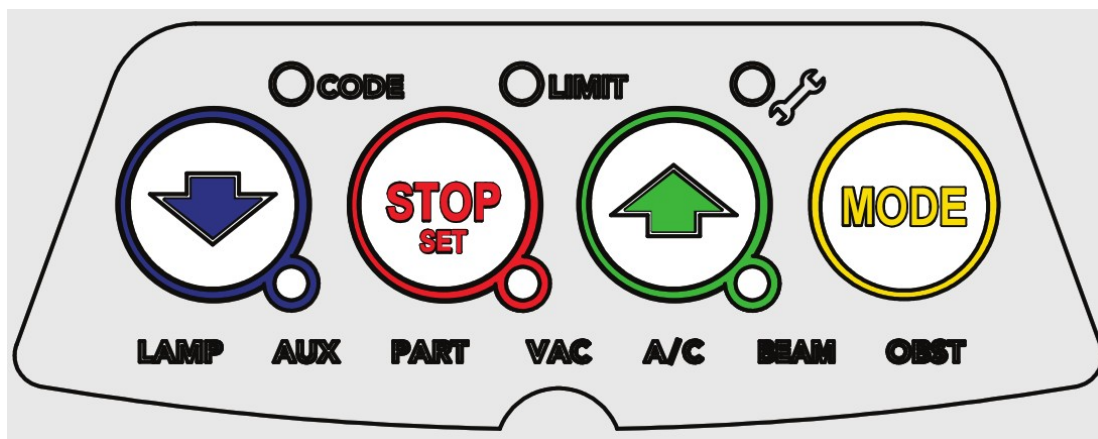
automatic  
TECHNOLOGY

GDO-12Hir  
High Rolling Door Opener  
Quick Operation Guide

## Contents

- 1 USER OPERATING CONTROLS
- 2 MANUAL DOOR OPERATION
- 3 CODING A REMOTE CONTROL
- 4 CHANGING A BATTERY
- 5 SMART PHONE CONTROL
- 6 TROUBLESHOOTING
- 7 CARING FOR YOUR OPENER
- 8 NEED A SERVICE CALL?
- 9 Documents / Resources
  - 9.1 References
- 10 Related Posts

## USER OPERATING CONTROLS



Button	Function
1	Close
2	Stop / Set Button
3	Open
4	Mode

## MANUAL DOOR OPERATION

### TO DISENGAGE THE OPENER

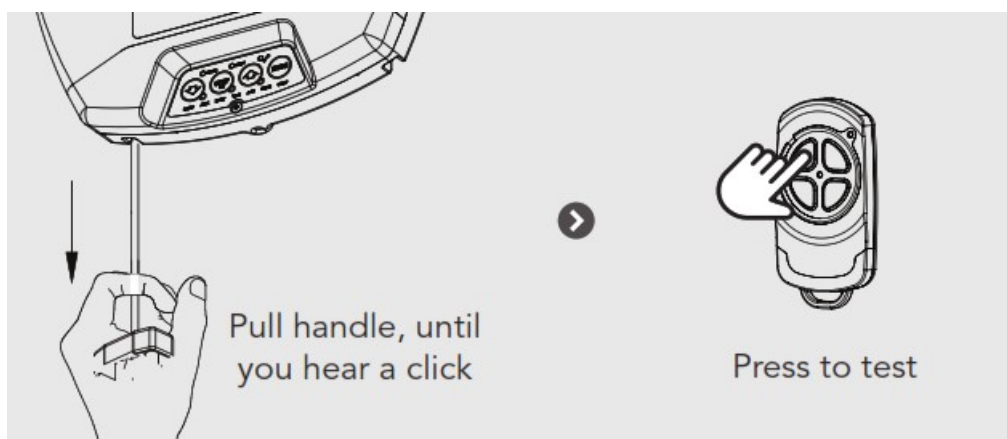


It is recommended to disengage the door with the door in the closed position.



**CAUTION:** When the opener is manually disengaged, the door is no longer locked. To lock the door manually, re-engage the opener after the door is closed.

### TO ENGAGE THE OPENER

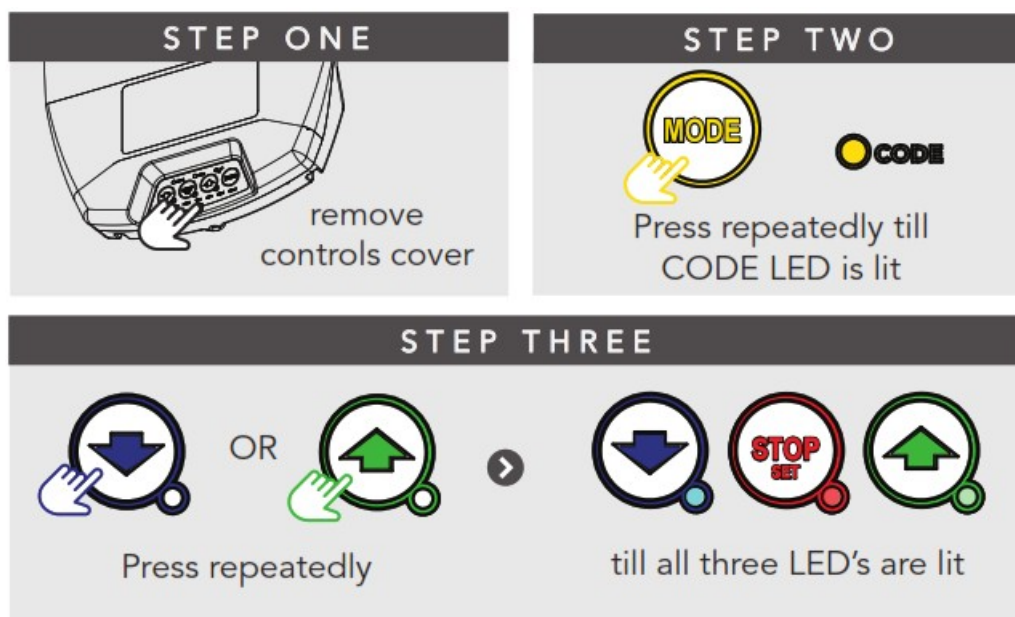


**WARNING!** Please test the manual release mechanism to ensure that the manual release is easy to operate. No more than 20kg of force should be required to disengage the door using the manual release cord. IF excessive force is required, contact your dealer.


## CODING A REMOTE CONTROL




The opener can only be operated from remote controllers that have been programmed into its memory. Up to 64 remotes can be programmed.



**STEP FOUR**



**HOLD**  
to enter coding



**HOLD for 3 sec**  
**RELEASE**  
**HOLD for 3 sec**  
Release both buttons

**STEP FIVE**



To exit coding

Then replace controls cover

**STEP SIX**




Press to test

## REMOTELY CODING A REMOTE CONTROL




Remotely coding works when you have a pre-coded remote control and are in range of the opener.

**STEP ONE**



Take a pre-coded remote and press the button to duplicate


**STEP TWO**



Use a pen,  
**HOLD for 2 sec**  
the middle button  
through the  
coding hole

**STEP THREE**

Opener flashes & beeps




Take new remote

**HOLD for 3 sec**  
**RELEASE**  
**HOLD for 3 sec**  
**RELEASE**

**STEP FIVE**

Opener stops flashing & beeping




Press to test

## CHANGING A BATTERY



Battery Type: 1 x CR2032.

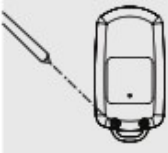
### STEP ONE



Check Light Status Table

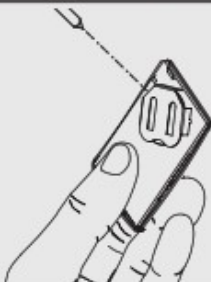
Light Status	Battery
Solid	OK
Flashing	Replace
No light	Replace

### STEP TWO



Use screwdriver to remove screws and open

### STEP THREE



Use non-metallic object to push out.



**WARNING!:** The battery is hazardous and must be kept out of reach of children. The battery can cause severe or fatal injuries within 2 hours or less if swallowed or placed inside any part of the body. If you suspect the battery has been swallowed or placed inside any part of the body, SEEK IMMEDIATE medical attention.

## SMART PHONE CONTROL

(require Smart Hub)

The Smart Phone Control works via your home's WiFi network. Initial setup involves linking your phone app and smart opener to your home network.



**WARNING!:** This device allows for operation of the door when not in line-of-sight of the door and opener. The door may operate unexpectedly, therefore do not allow anything to stay in or near the path of the door.

## BEFORE YOU START



Download the ATA App to your smartphone

+



Ensure limits are set prior to connecting to wifi

+



The home WiFi router is within range of opener



## TROUBLESHOOTING



Symptom	Possible cause	Remedy
The opener does not work from the remote	The opener does not have power The battery in the remote control is flat The remote button is not programmed to operate the door. Door Code LED is flashing yet the opener is not working.	Replace the battery Plug a device of similar voltage (e.g. a hairdryer) into the power point and check it is OK. Code in the remote control button Ensure the correct button on the transmitter is being pressed.
One remote works but the other/s do not	Faulty remote control Flat battery	Replace remote control Replace battery
The motor is running but the door remains stationary	The opener is disengaged	Re-engage the opener
The remote range varies or is restricted	Variations are normal depending on conditions e.g. temperature or external interference The battery life is exhausted	Make sure you can see the door when you use the remote control Check the battery status as per section 4 of this guide
The door reverses for no apparent reason	If Safety beams are installed they may be partially obstructed	Ensure the beam path is not obstructed. Check the alignment of the beams
The Open LED and Close LED are flashing alternatively	Opener is overloaded	Discontinue use and contact 1300 133 944 for support
The Open LED continues to flash	Door obstructed when opening	Clear away any obstructions and test door opens correctly. (if door is damaged, contact a door professional)
The Close LED continues to flash	Limits may be cleared	Remove all power sources. Wait (10-15 secs), then reconnect power. If Blue LED is flashing, limits are not set. Contact 1300 133 944.

## CARING FOR YOUR OPENER

Preventative servicing of your garage door and opener is important. Your garage door is made up of numerous moving parts designed to lift and lower your door safely and efficiently.

Ongoing preventative servicing ensures that your door continues to function within factory specifications, greatly reduces the risk of failure and repair bills down the track, and ensure you maintain your Warranty.

Refer to your Owners Opener Handbook for your service schedule available [HERE](#).



Refer to the installation manual for monthly testing procedures in Section 12 to ensure garage door is fit for use available [HERE](#).


Online warranty details are available [HERE](#).

## NEED A SERVICE CALL?

If the opener needs a service please call the dealer who installed the garage door opener (their contact details are usually on a sticker on the back of your garage door).

For product assistance, general enquiry or more information, please visit: [ata-aust.com.au](http://ata-aust.com.au) or call 1300 133 944.

Documents / Resources



[automatic TECHNOLOGY GDO-12Hir High Rolling Door Opener](#) [pdf] Instruction Manual  
GDO-12Hir, High Rolling Door Opener, GDO-12Hir High Rolling Door Opener, Door Opener, Opener

References

-  [Automatic Garage Door Openers and Gate Openers - Repairs - ATA](#)