

automatic
TECHNOLOGY

ATS-1 Sectional Door Openers



automatic TECHNOLOGY ATS-1 Sectional Door Openers User Guide

[Home](#) » [automatic TECHNOLOGY](#) » automatic TECHNOLOGY ATS-1 Sectional Door Openers User Guide 

Contents

- [1 automatic TECHNOLOGY ATS-1 Sectional Door Openers](#)
- [2 Product Usage Instructions](#)
- [3 Frequently Asked Questions](#)
- [4 USER OPERATING CONTROLS](#)
- [5 MANUAL DOOR OPERATION](#)
- [6 CODING A REMOTE CONTROL](#)
- [7 CHANGING A BATTERY](#)
- [8 TROUBLESHOOTING](#)
- [9 CARING FOR YOUR OPENER](#)
- [10 Documents / Resources](#)
 - [10.1 References](#)
- [11 Related Posts](#)

automatic
TECHNOLOGY

automatic TECHNOLOGY ATS-1 Sectional Door Openers



Specifications

- **Product Name:** ATS-1 Sectional Door Opener
- **Remote Control Capacity:** Up to 64 remotes
- **Battery Type:** 1 x CR2032

Product Usage Instructions

User Operating Controls

The user operating controls are as follows.

Button	Function
01	Close
02	Close indicator

Manual Door Operation

1. Ensure the door is closed.
2. Pull the door towards you until you hear a click.
3. Manually operate the door.

CAUTION: Remember to re-engage the opener after closing the door to ensure it is locked.

1. Pull the door away from you until you hear a click.
2. Press the button to test.

CAUTION: Do not use the string handle to open the door as it may cause injury.

Coding a Remote Control

1. Switch on the power.
2. Press the specified buttons until the remote LED lights up.

Changing a Battery

1. Check the light status table to determine battery status.
2. Use a screwdriver to remove screws and open the battery compartment.

Troubleshooting

If you encounter any issues such as the main light flashing, refer to the troubleshooting table in the manual for appropriate remedies.

Frequently Asked Questions

Q: How many remotes can be programmed with the ATS-1 Sectional Door Opener?

A: Up to 64 remotes can be programmed into the opener's memory.

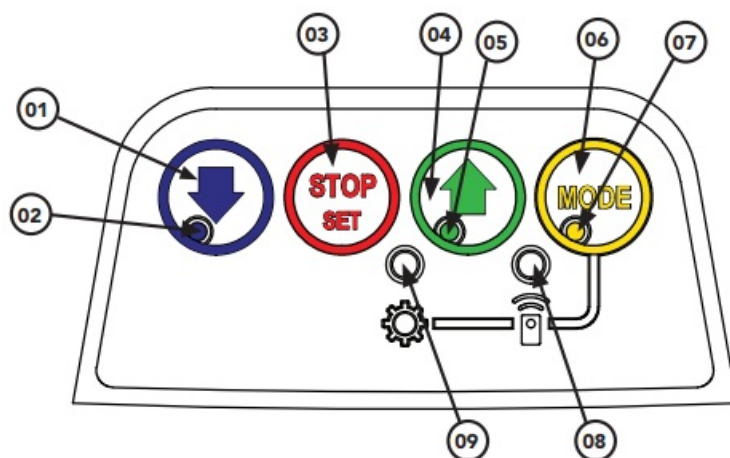
Q: What type of battery does the ATS-1 Sectional Door Opener use?

A: The opener uses a 1 x CR2032 battery.

Q: What should I do if the main light flashes after the operation?

A: Refer to the troubleshooting table in the manual for specific remedies based on the number of flashes and pauses.

USER OPERATING CONTROLS

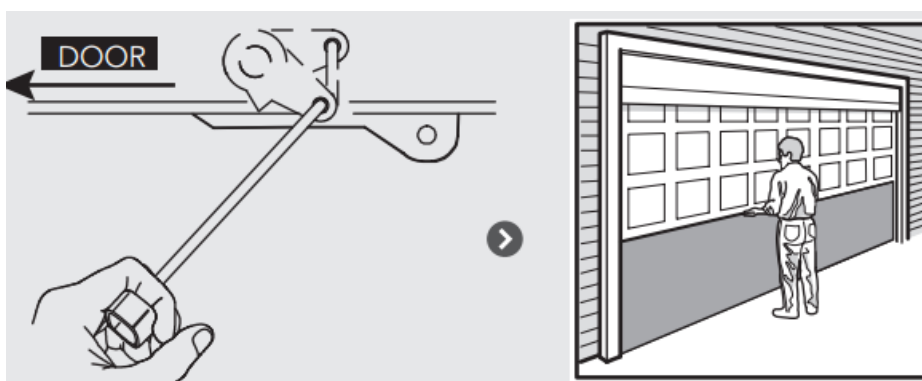


Button	Function
01	Close
02	Close indicator
03	Stop / Set
04	Open
05	Open indicator
06	Mode
07	Status indicator
08	Remote status indicator
09	Adjustment indicator

MANUAL DOOR OPERATION

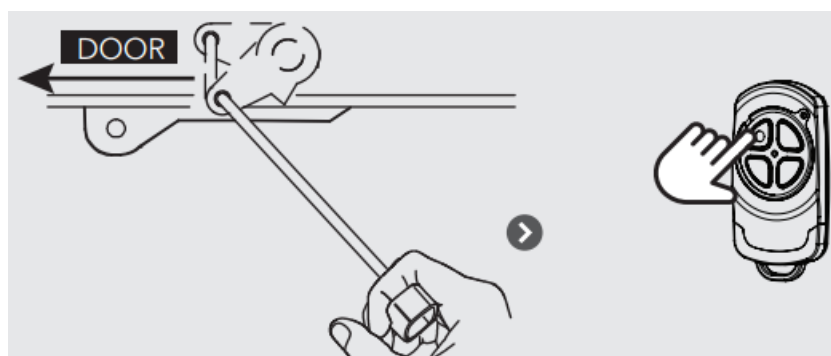
TO DISENGAGE THE OPENER

- **Tip** It is recommended to disengage the door with the door in the closed position.



- Pull towards, it until you hear a click
- Manually operate door
- **CAUTION:** When the opener is manually disengaged, the door is no longer locked. To lock the door manually, re-engage the opener after the door is closed.

TO ENGAGE THE OPENER



- Pull away, until you hear a click
- Press to test
- **CAUTION:** Do not use the string handle as a mechanism to open the door. Failure to comply may cause serious

injury.

CODING A REMOTE CONTROL

The opener can only be operated from remote controllers that have been programmed into its memory. Up to 64 remotes can be programmed.



1. STEP ONE

- Switch power on

2. STEP TWO

- Press repeatedly till the remote LED lit



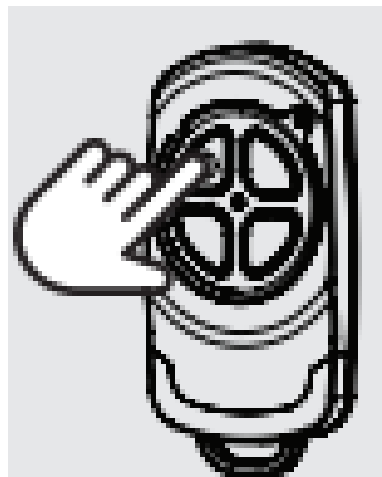
3. STEP THREE



- Opener flashes & beeps
- Release both buttons

4. STEP FOUR

- Press to test

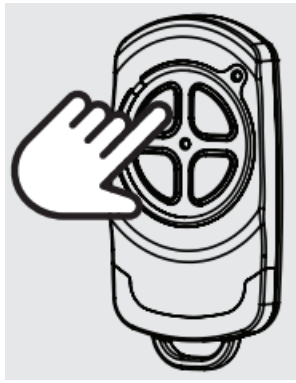


REMOTELY CODING A REMOTE CONTROL

Remotely coding works when you have a pre-coded remote control and are in the range of the opener.

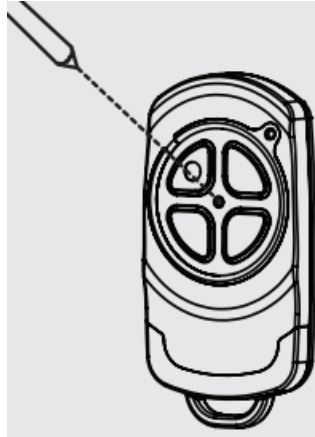
1. STEP ONE

- Take a pre-coded remote and press the button to duplicate



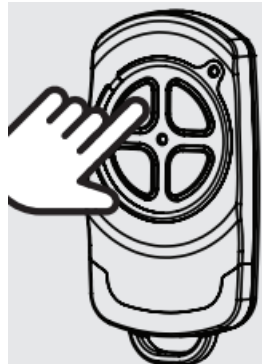
2. STEP TWO

- Use a pen, HOLD for 2 sec the middle button through the coding hole



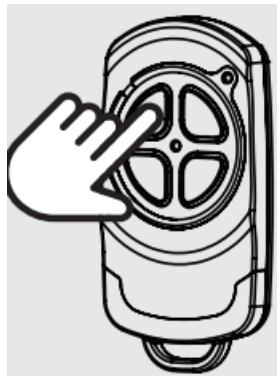
3. STEP THREE

- Opener flashes & beeps
- Take new remote HOLD for 3-sec RELEASE HOLD for 3-sec RELEASE



4. STEP FOUR

- Opener stops flashing & beeping
- Press to test



CHANGING A BATTERY

Battery Type: 1 x CR2032.

STEP ONE

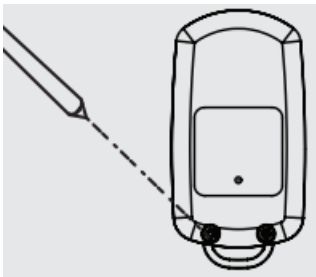
Check Light Status Table



Light Status	Battery
Solid	OK Replace Replace
Flashing	
No light	

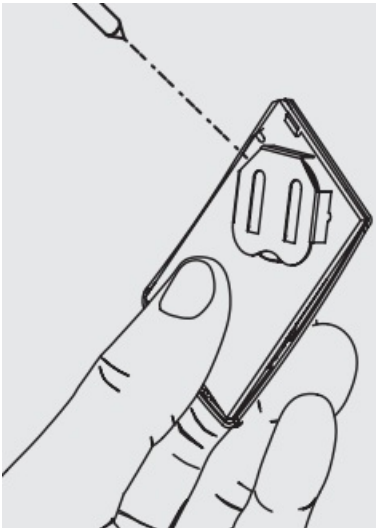
STEP TWO

- Use a screwdriver to remove the screws and open



STEP THREE

- Use a non-metallic object to push out.



- **WARNING!:** The battery is hazardous and must be kept out of reach of children.
- The battery can cause severe or fatal injuries within 2 hours or less if swallowed or placed inside any part of the

body.


- If you suspect the battery has been swallowed or placed inside any part of the body, SEEK IMMEDIATE medical attention.

TROUBLESHOOTING

Main Light = Service / Warning Indicator:

Requirements for a service and user warnings are indicated after operation by the main light repeatable flashing OFF a number of times followed by a pause.

The below table identifies the issues and remedies:

	Issue	Remedy
1	Normal operation (door is fully open)	
2	PE is preventing door from moving	Clear away any obstructions. Test Door. If unable to move the door and suspect beam is faulty, enter Safety Beam Emergency Close by pressing and holding a pre-coded transmitter button until the door closes.
3	Wireless PE battery is low	Change PE Battery
4	Maintenance is due after pre-set number of cycles.	Contact dealer to arrange service.
5	Standby battery is faulty	Contact 1300 769 850 within Australia for assistance.
6	Door was obstructed	Clear away any obstructions and test door opens/closes correctly. (if the door is damaged, contact a door professional)
7	Motor overloaded or stalled	Contact dealer to arrange a door service.

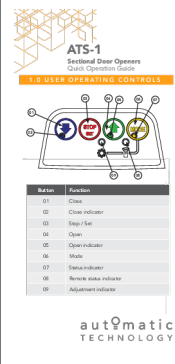
CARING FOR YOUR OPENER

- Preventative servicing of your garage door and opener is important. Your garage door is made up of numerous moving parts designed to lift and lower your door safely and efficiently.
- Ongoing preventative servicing ensures that your door continues to function within factory specifications, greatly reduces the risk of failure and repair bills down the track, and ensures you maintain your Warranty.
- Refer to the installation manual for monthly testing procedures in Section 13 to ensure the garage door is fit for use available [HERE](#)
- Online warranty details are available [HERE](#)

NEED A SERVICE CALL

- If the opener needs a service please call the dealer who installed the garage door opener (their contact details are usually on a sticker on the back of your garage door).
- For product assistance, general inquiry, or more information, please visit: automatictechnology.com/au or call 1300133944.

Documents / Resources



[automatic TECHNOLOGY ATS-1 Sectional Door Openers](#) [pdf] User Guide
ATS-1 Sectional Door Openers, ATS-1, Sectional Door Openers, Door Openers, Openers

References

- [Automatic Technology Australia: Automatic Garage Door Openers | Gate Openers - Automatic Technology AU](#)
- [User Manual](#)

[Manuals+](#), [Privacy Policy](#)

This website is an independent publication and is neither affiliated with nor endorsed by any of the trademark owners. The "Bluetooth®" word mark and logos are registered trademarks owned by Bluetooth SIG, Inc. The "Wi-Fi®" word mark and logos are registered trademarks owned by the Wi-Fi Alliance. Any use of these marks on this website does not imply any affiliation with or endorsement.