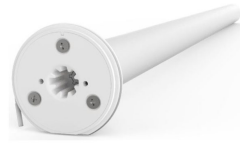



AUTOMATE.
Zero Li-ion
Q1.1 Battery
Powered
Motor



AUTOMATE Zero Li-ion Q1.1 Battery Powered Motor Owner's Manual

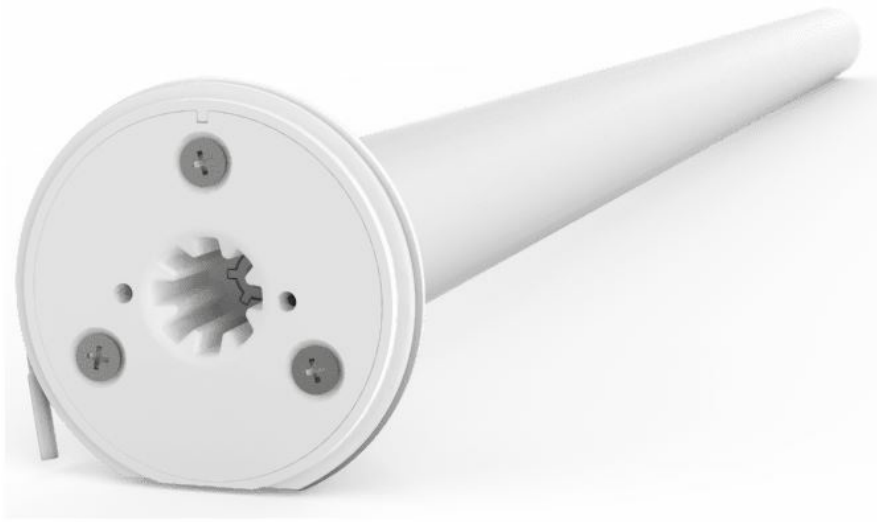
[Home](#) » [AUTOMATE](#) » AUTOMATE Zero Li-ion Q1.1 Battery Powered Motor Owner's Manual 

Contents

- [1 AUTOMATE Zero Li-ion Q1.1 Battery Powered Motor](#)
- [2 Product Specifications](#)
- [3 Product Usage Instructions](#)
- [4 PRODUCT FEATURES](#)
- [5 Product Specifications](#)
- [6 Compatible Tubes](#)
- [7 Applications](#)
- [8 Dimensions](#)
- [9 Compatible Products](#)
- [10 Frequently Asked Questions \(FAQ\)](#)
- [11 Documents / Resources](#)
 - [11.1 References](#)
- [12 Related Posts](#)

AUTOMATE.®

AUTOMATE Zero Li-ion Q1.1 Battery Powered Motor



Product Specifications

- **Voltage:** 5V
- **Torque:** 1.1Nm
- **Max Run Time:** 12 min
- **Speed:** 20 RPM (Adjustable to 24 or 28)
- **Radio Frequency:** 433.92 MHz
- **RF Modulation:** FSK
- **IP Rating:** IP20
- **Limit Switch Type:** Electronic
- **Current:** 0.96 A
- **Insulation Class:** III
- **Sound Level:** ~38 dB
- **Power:** 8 W

Product Usage Instructions

Battery Check Action

When paired with a remote, the motor will move the shade to indicate the battery percentage.

Micro USB Charging

To charge the motor, utilize any micro USB cable and charger. A custom motor charger is not required.

Elegant Soft Stop

The motor slows down before coming to a complete stop at the limit or target position for a smooth operation.

Secure Hold

The motor head design accommodates a bracket with a 12mm tongue for a more secure fit.

PRODUCT FEATURES

- **Patented Motor Head Design**
Offers the smallest light-gap and antenna cable can be concealed within the motor head.
- **Quiet Operation**

Superior acoustic

performance makes this our quietest motor range yet.

- **Battery Check Action**

When paired with a remote, the motor will move the shade to indicate battery percentage.

- **Secure Hold**

The motor head design accommodates a bracket with a 12mm tongue for a more secure fit.

- **Innovative Motor Cap**

Optional, custom-designed accessory for no visible wires.

- **Elegant Soft Stop**

Slows the motor down before coming to a complete stop at the limit or target position.

- **Micro USB Charging**

Custom motor charger not required. Utilize any micro USB cable and charger to renew the battery.

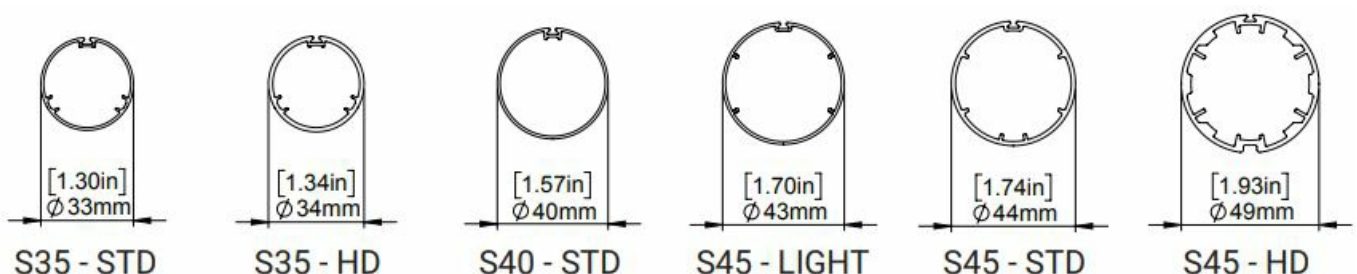
- **Simplified RetroFit**

The motor can be swapped yet the system retains deductions, bracket adjustments are eliminated and minimal light gap is achieved.

Product Specifications

| | | | |
|------------------------|----------------------------------|---------------------------|-----------------------------|
| Voltage | 5 | Limit Switch Type | Electronic |
| Torque | 1.1Nm | Current | 0.96 A |
| Max Run Time | 12 min. | Battery Size/Type | 2600mAH |
| Speed | 20 RPM (Adjustable to 24 or 28) | Temp Working Range | 32°F to 140°F (0°C to 60°C) |
| Radio Frequency | 433.92 MHz | Insulation Class | III |
| RF Modulation | FSK | Sound Level | ~38 dB |
| IP Rating | IP20 | Power | 8 W |

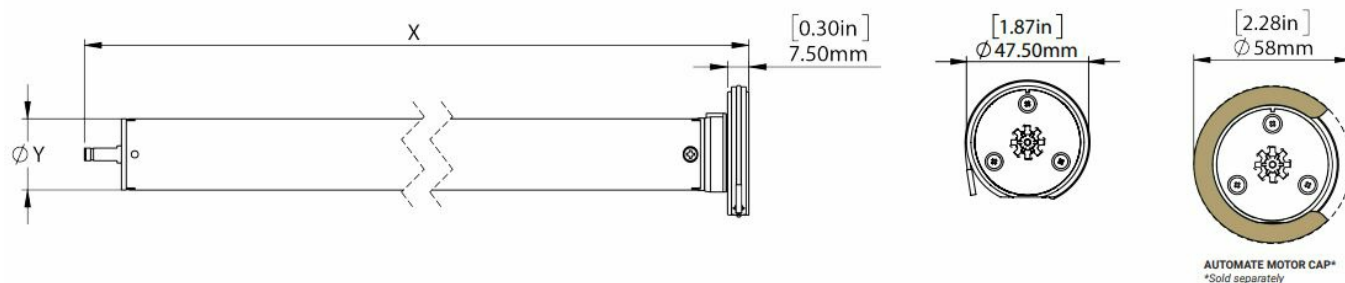
Compatible Tubes



Applications

- Roller Shades
- Roman Shades

Dimensions



| DIM X | DIM Y | \varnothing Head Diameter |
|--------------------------|------------------------|-----------------------------|
| $[21.72\text{in}]$ 552mm | $[0.98\text{in}]$ 25mm | $[1.87\text{in}]$ 47.5mm |

Compatible Products

Controllers



Pulse HUB & App



Push Remotes

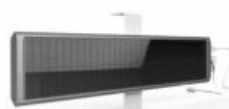


Wall Controllers

Charging Options



Wall Charger



Solar Panel

Motor Cap



Sensors



Sun Sensor

Frequently Asked Questions (FAQ)

- **What is ARCTM?**

ARCTM (Automate Radio Communication) is Rollease Acmeda's proprietary technology utilizing 433MHz radio communication with bi-directional feedback that brings Automate motorized shading systems together.


- **What is the sound level of the motor?**

The motor operates at a sound level of approximately 38 dB, making it one of our quietest motor ranges yet.

- **How can I conceal the antenna cable within the motor head?**

The patented Motor Head Design offers the smallest light gap and allows the antenna cable to be concealed within the motor head.

Documents / Resources

| | |
|---|---|
|  | <p>AUTOMATE Zero Li-ion Q1.1 Battery Powered Motor [pdf] Owner's Manual S35SS3T5DSTD, S35SH3D5HD, S35-STD, S35-HD, S40-STD, S45-LIGHT, S45-STD, S45-HD, Zero Li-ion Q1.1 Battery Powered Motor, Zero Li-ion Q1.1, Battery Powered Motor, Powered Motor, Motor</p> |
|---|---|

References

- [Rollease Acmeda - Precision in Motion](#)
- [User Manual](#)

Manuals+, Privacy Policy

This website is an independent publication and is neither affiliated with nor endorsed by any of the trademark owners. The "Bluetooth®" word mark and logos are registered trademarks owned by Bluetooth SIG, Inc. The "Wi-Fi®" word mark and logos are registered trademarks owned by the Wi-Fi Alliance. Any use of these marks on this website does not imply any affiliation with or endorsement.