

## Contents [ [hide](#) ]

- [1 AUTOMATE Savant Pulse PRO Seamlessly Connect](#)
- [2 Specifications](#)
- [3 AUTOMATE PULSE PRO OVERVIEW](#)
- [4 Installation Instruction](#)
- [5 SAVANT CONTROL SYSTEM CONNETION](#)
- [6 Frequently Asked Questions](#)
- [7 Shade is not moving at all.](#)
  - [7.1 Documents / Resources](#)
    - [7.1.1 References](#)

AUTOMATE™

## AUTOMATE Savant Pulse PRO Seamlessly Connect



## Specifications

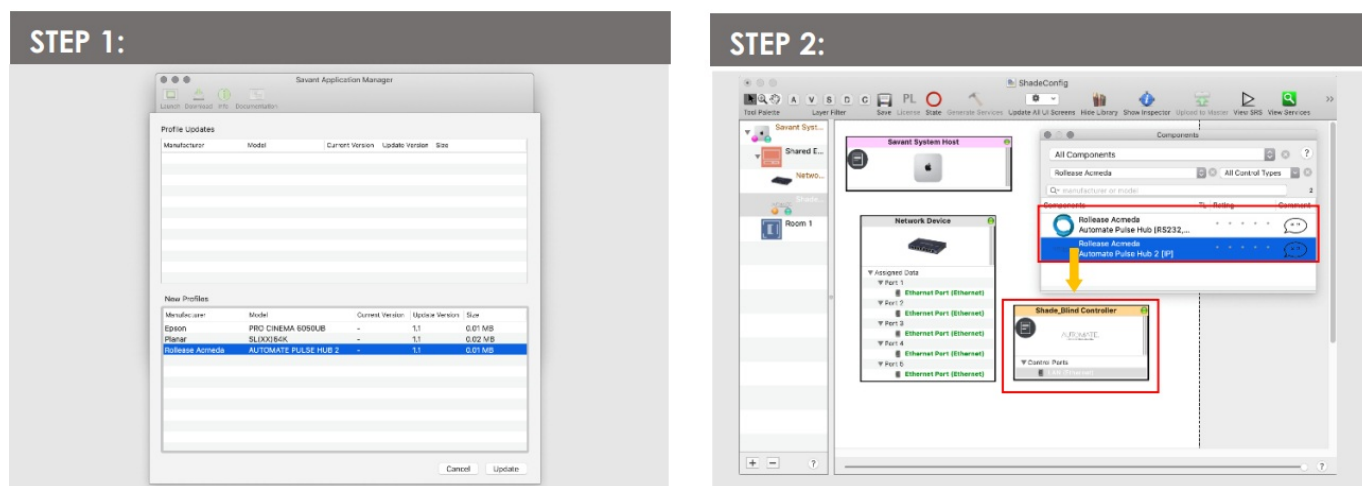
- **Product Name:** Automate™ Savant
- **Manufacturer:** Rollease Acmeda
- **Compatibility:** Rollease Acmeda AUTOMATE PULSE PRO HUB
- **Connection:** LAN (Ethernet) port

- **Control System:** Savant Host

## AUTOMATE PULSE PRO OVERVIEW

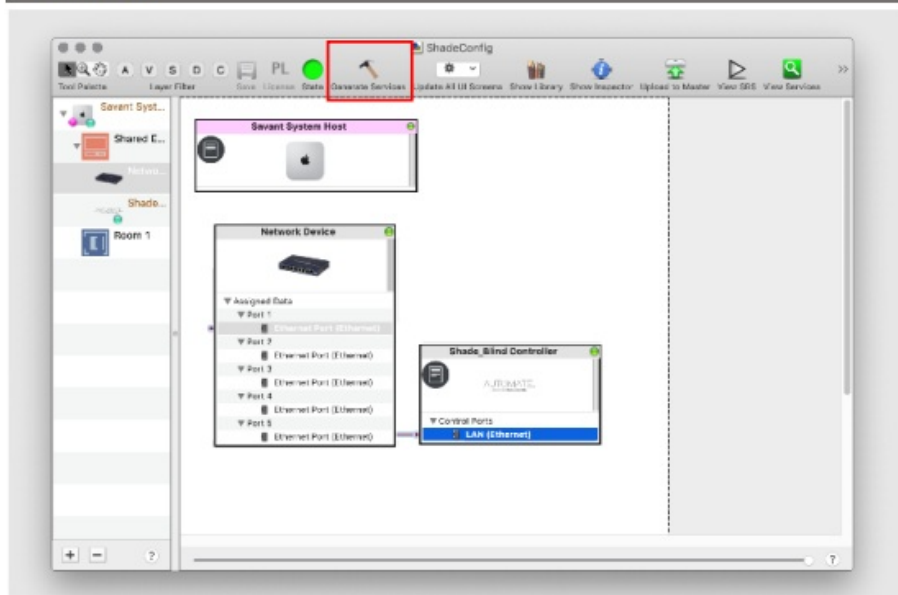
Elevate your Automate experience by seamlessly integrating Automate motorized shades into Savant's industry-leading Smart Home control systems. The Automate Pulse PRO offers a powerful integration with discrete shade control and two-way communication, providing real-time updates on shade position and battery levels. Featuring both Ethernet (CAT 5) and 2.4GHz wireless connectivity, the Pulse PRO ensures smooth home automation integration through an easy-to-access RJ45 port located on the back of the hub. Each hub supports up to 30 shades, making it a versatile solution for any home automation setup.

## Installation Instruction



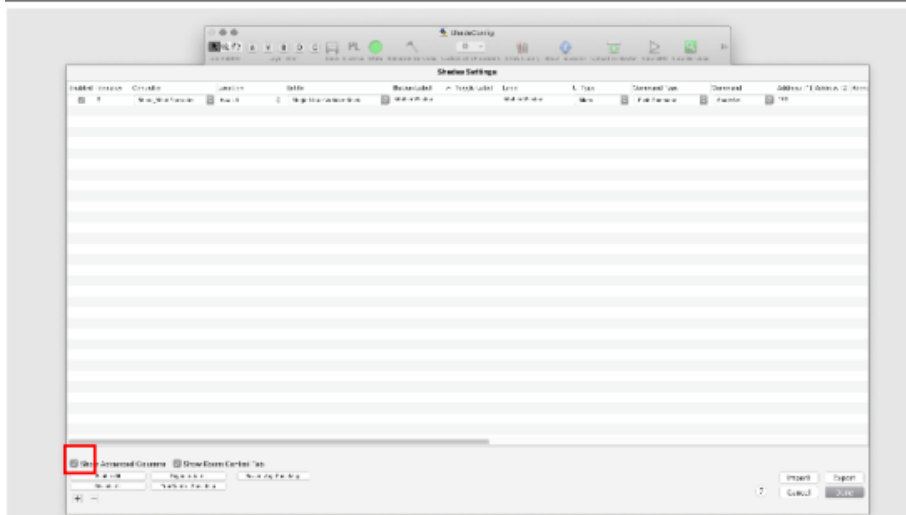
1. Open the Savant Application Manager and update your profile library. If you do not already have the Rollease Acmeda AUTOMATE PULSE PRO HUB profile in your library, it will appear in the “New Profiles” list.
2. Open your current Blueprint configuration and locate the Rollease Acmeda profile within the Library, then drag the item into your Blueprint canvas.

### STEP 3:



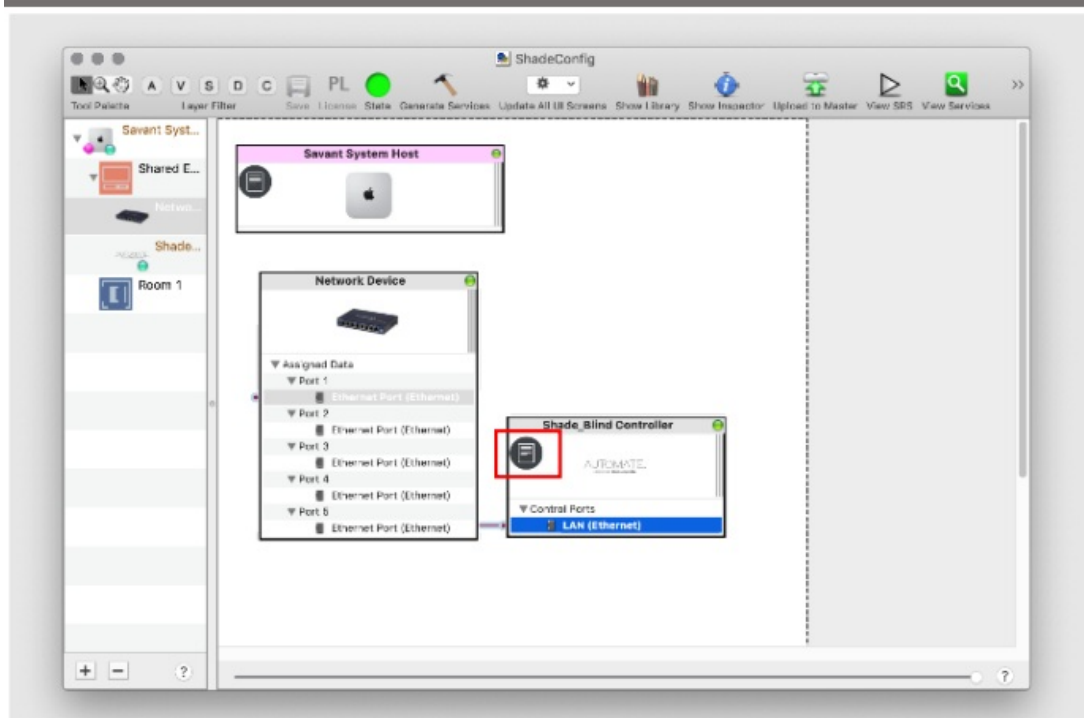
3. Make a connection between the “LAN (Ethernet)” port on the Shade Controller profile and the “Ethernet Port (Ethernet)” port on a Network Switch profile. Then click the “Generate Services” button.

### STEP 4:



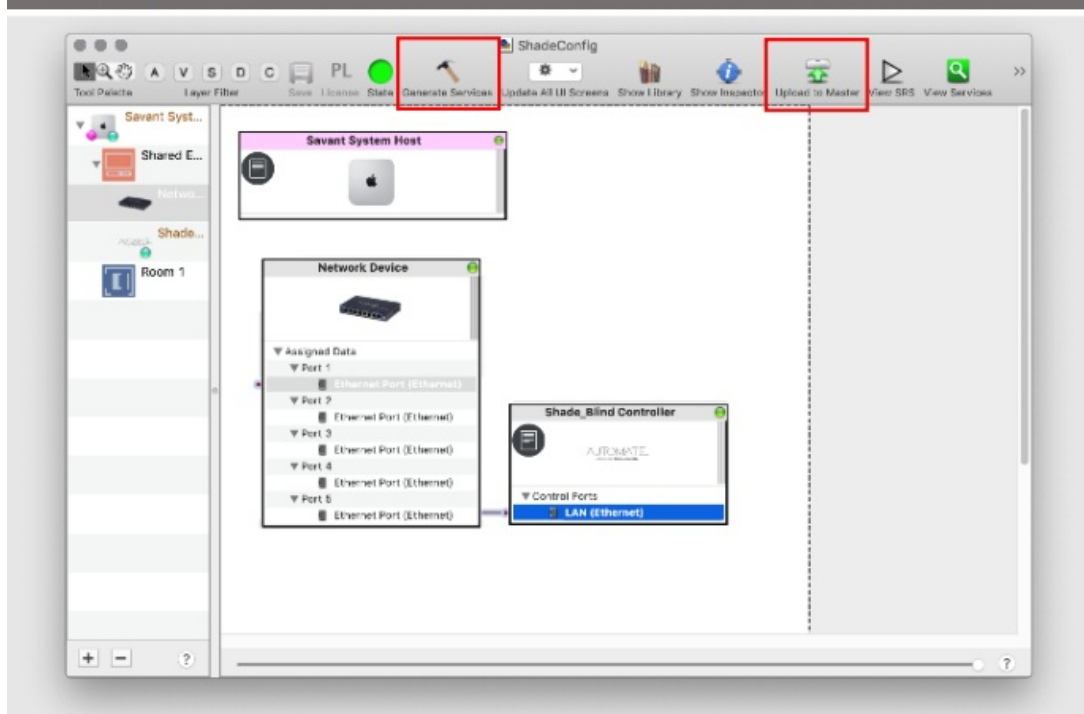
4. Navigate to Tools > Settings > Shades... in the menu to locate the “Shade Settings” data table. Click the + button, in the bottom-left of the screen, to add a new shade. Set values for the following: Location (EX: Room 1). Entity (EX: “Shade” for Up-Down-Stop buttons, or “Shade Motor Variable Shade” for a shade slider). Label (EX: “Kitchen Window”). Address [1] [EX: 19X]. This must be in the form of a 3-character string. The addresses are the same as those displayed on your Automate Shades App.

## STEP 5:



5. The “Notes” section of the profile provides additional details about setup or use. This section may be updated over time

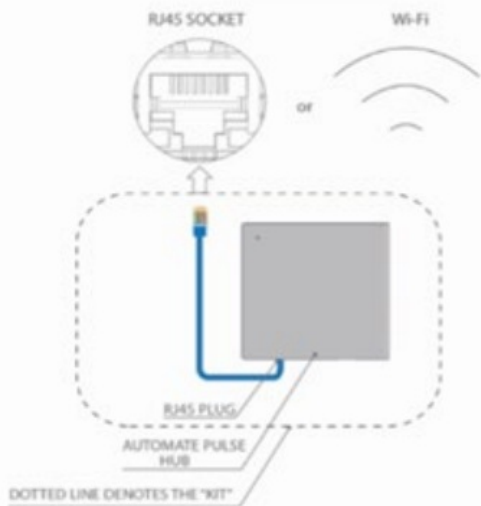
## STEP 6:



6. Click the “Generate Services” button again, then “Upload to Master” to push the configuration to the Savant Host.

## SAVANT CONTROL SYSTEM CONNETION

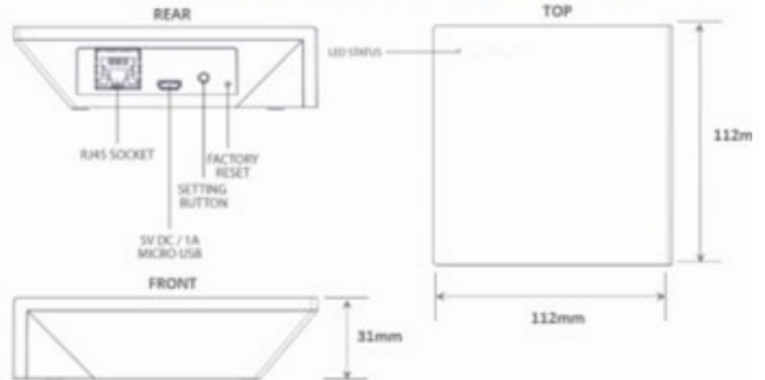
## INTEGRATION TOPOLOGY SAVANT



### ADDITIONAL INFORMATION:

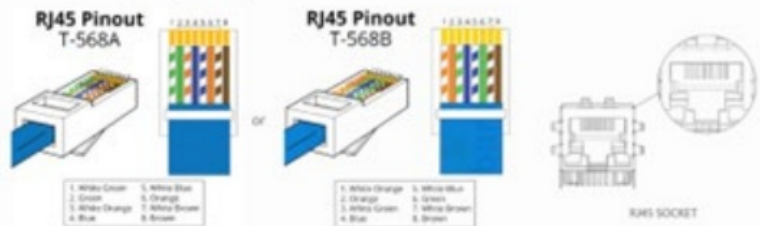
- The CAT 5 cable should be no longer than 100 meters (328ft).
- Router, switch or access point are required to connect the Hub via LAN connection;
- Wi-fi repeater is required depending on the cover of the Wi-fi Router signal.
- The AUTOMATE PULSE HUB 2 works only with Wi-fi in 2.4Ghz (not 5Ghz)

## AUTOMATE PULSE PRO HUB



## CONNECTIONS

The standard connections of the Automate Pulse Hub 2 is Ethernet or Wi-Fi. For a LAN connection, you can use a straight Through wiring accordingly indicated below:



- [rolleaseacmeda.com](http://rolleaseacmeda.com)
- © 2025 Rollease Acmeda Group

## SUPPORT RESOUCES

For further assistance, contact your retailer, visit our website at [www.rolleaseacmeda.com](http://www.rolleaseacmeda.com).

## Frequently Asked Questions

For further assistance, contact your retailer or visit the Rollease Acmeda website at [www.rolleaseacmeda.com](http://www.rolleaseacmeda.com).

No Automate Pulse PRO Hub detected.

Make sure that your Automate Pulse PRO is assigned to the correct network and get an IP Address available and still communicating with the network using the Automate Shades App.

Shade limits are not set properly.

Calibrate shade limits with your Rollease Acmeda remote before setting the appropriate open and close time within SAVANT SYSTEM.

---

### **Shade is not moving at all.**

Make sure the selected Pulse PRO Hub is the correct Pulse PRO Hub for the shade to be controlled. Confirm the correct bindings are set in the SAVANT System connections tab between the Pulse PRO Hub and Shade drivers.

I have multiple Pulse PRO Hubs, what do I do?

Load two Pulse PRO Hub drivers. After selecting “Retrieve Hubs” located in the driver actions tab, you will see different Pulse Hubs -select the desired one.

I don’t see any shade bindings in the Pulse PRO Hub driver?

Select “Retrieve Shades” located in the driver actions tab.

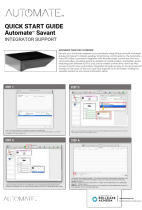
How do I scan for available Pulse PRO Hubs?

Once the Pulse PRO Hub is properly connected via the Ethernet cable or Wireless network, navigate to the Pulse Hub Properties page within Composer. Select “Retrieve Hubs” located in the driver actions tab.

We get unexpected responses from the SAVANT System, or “?” symbols

Ensure that all connections using the Ethernet port or Wi-Fi are working properly. The missed connection has been known to yield unwanted or unexpected results.

# Documents / Resources

	<p><a href="#">AUTOMATE Savant Pulse PRO Seamlessly Connect [pdf]</a> User Guide</p> <p>Savant Pulse PRO Seamlessly Connect, Pulse PRO Seamlessly Connect , Seamlessly Connect</p>
---	--

## References

- [User Manual](#)

 AUTOMATE

 AUTOMATE, Pulse PRO Seamlessly Connect, Savant Pulse PRO Seamlessly Connect, Seamlessly Connect

—Previous Post

**[AUTOMATE MT01-1345-069002 5V Li-ion Motor Owner’s Manual](#)**

Next Post—

**[AUTOMATE MT01-3101-067004 Top Down Bottom Up Center Mount Motor Instruction Manual](#)**

—

## Leave a comment

Your email address will not be published. Required fields are marked \*

Comment \*

Name

Email

Website

☐ Save my name, email, and website in this browser for the next time I comment.

**Post Comment**

**Search:**

**Search**

[Manuals+](#) | [Upload](#) | [Deep Search](#) | [Privacy Policy](#) | [@manuals.plus](#) | [YouTube](#)

This website is an independent publication and is neither affiliated with nor endorsed by any of the trademark owners. The "Bluetooth®" word mark and logos are registered trademarks owned by Bluetooth SIG, Inc. The "Wi-Fi®" word mark and logos are registered trademarks owned by the Wi-Fi Alliance. Any use of these marks on this website does not imply any affiliation with or endorsement.