



AUTOMATE Push ONE 1 Channel Remote User Guide

[Home](#) » [AUTOMATE](#) » AUTOMATE Push ONE 1 Channel Remote User Guide 



Push ONE Programming Guide



MT02-0101-xxx010_v1.3_08032024

Contents

- 1 SAFETY
- 2 FCC & ISED STATEMENT
- 3 BATTERY MANAGEMENT
- 4 INSTALLER BEST PRACTICE AND TIPS
- 5 PRODUCT RANGE & P1 LOCATIONS
- 6 WALL MOUNTING
- 7 REPLACE BATTERY
- 8 CONTROLLING A SHADE
- 9 SET A FAVORITE POSITION
- 10 Documents / Resources
 - 10.1 References

SAFETY



WARNING: Important safety instructions to be read before installation and use.

Incorrect installation or use can lead to serious injury and will void manufacturer's liability and warranty. It is important for the safety of persons to follow the enclosed instructions.

Save these instructions for future reference.

- Do not expose to water, moisture, humid and damp environments or extreme temperatures.
- Persons (including children) with reduced physical, sensory or mental capabilities, or lack of experience and knowledge, should not be allowed to use this product.
- Use or modification outside the scope of this instruction manual will void warranty.
- Installation and programming to be performed by a suitably qualified installer.
- Follow installation instructions.
- For use with motorized shading devices.
- Frequently inspect for improper operation.
- Do not use if repair or adjustment is necessary.
- Keep clear when in operation.
- Replace battery with correctly specified type.



Warning: contains coin battery

Battery: CR2430 | 3VDC



- Remove and immediately recycle or dispose of used batteries according to local regulations and keep away from children. Do NOT dispose of batteries in household trash or incinerate.

- Even used batteries may cause severe injury or death.
- Call a local poison control center for treatment information.
- Non-rechargeable batteries are not to be recharged.
- Do not force discharge, recharge, disassemble, heat above (manufacturer's specified temperature rating) or incinerate.

Doing so may result in injury due to venting, leakage or explosion resulting in chemical burns.

- Ensure the batteries are installed correctly according to polarity (+ and -).
- Do not mix old and new batteries, different brands or types of batteries, such as alkaline, carbon-zinc, or rechargeable batteries.
- Remove and immediately recycle or dispose of batteries from equipment not used for an extended period of time according to local regulations.
- Always completely secure the battery compartment. If the battery compartment does not close securely, stop using the product, remove the batteries, and keep them away from children.



Warning

- **INGESTION HAZARD:** This product contains a button cell or coin battery.
- **DEATH** or serious injury can occur if ingested.
- A swallowed button cell or coin battery can cause Internal Chemical Burns in as little as 2 hours.
- **KEEP** new and used batteries **OUT OF REACH** of **CHILDREN**
- Seek immediate medical attention if a battery is suspected to be swallowed or inserted inside any part of the body.

FCC &ISED STATEMENT

FCC ID: 2AGGZ003B9ACA50

IC: 21769-003B9ACA50

Operation Temperature Range: -10°C to +50°C

Ratings: 3VDC, 15mA

This device complies with part 15 of the FCC Rules. Operation is subject to the following two conditions:

(1) This device may not cause harmful interference, and (2) this device must accept any interference received, including interference that may cause undesired operation.

Caution: Changes or modifications to this unit not expressly approved by the party responsible for compliance could void the user's authority to operate the equipment.

This device contains licence-exempt transmitter(s)/receiver(s) that comply with Innovation, Science and Economic Development Canada's licence-exempt RSS(s). Operation is subject to the following two conditions:

1. This device may not cause interference.
2. This device must accept any interference, including interference that may cause undesired operation of the device.

NOTE: This equipment has been tested and found to comply with the limits for a Class B digital device, pursuant to part 15 of the FCC Rules. These limits are designed to provide reasonable protection against harmful interference in a residential installation. This equipment generates, uses and can radiate radio frequency energy and, if not installed and used in accordance with the instructions, may cause harmful interference to radio communications. However, there is no guarantee that interference will not occur in a particular installation. If this

equipment does cause harmful interference to radio or television reception, which can be determined by turning the equipment off and on, the user is encouraged to try to correct the interference by one or more of the following measures:

- Reorient or relocate the receiving antenna.
- Increase the separation between the equipment and receiver.
- Connect the equipment into an outlet on a circuit different from that to which the receiver is connected.
- Consult the dealer or an experienced radio/TV technician for help.

BATTERY MANAGEMENT

BATTERY MOTORS: Prevent discharging the battery completely for extended periods, recharge as soon as the battery is discharged.

CHARGING NOTES Charge your motor for 6-8hours, depending on the motor model, as per motor instructions.



Note: During operation, if battery is low, the motor will beep 10 times to prompt the user it needs charging.

HOW TO CHARGE WIRE-FREE LI-ION ZERO

STEP 1.

Rotate cover cap to exposor motor head.



STEP 2.

Find nearest power source and plug in charger (use an extension cord if required).

STEP 3.

Plug micro USB end into the motor.

- Observe the green light flashing and charge until the green light goes solid green.
- This may take up to eight hours depending on how flat your battery is.
- Any mobile phone charger can also be used to charge your motor).



STEP 4.

Unplug and return cover cap to conceal motor head.



INSTALLER BEST PRACTICE AND TIPS

SLEEP MODE

If pre-programmed: before shipping the motor ensure the motor is put into sleep mode so it doesn't activate during transit.

LOCK REMOTE

Prevent users accidentally changing the limit; ensure the remote is locked as your last step of programming.

ZONE/GROUPS

Ask the customer the day before to think how shades will be zoned on the remote. This may save an extra call out.

SETTLE FABRIC

Run the fabric up and down several times to ensure fabric has settled to some extent and re adjust the limits if needed.

CHARGE 100%

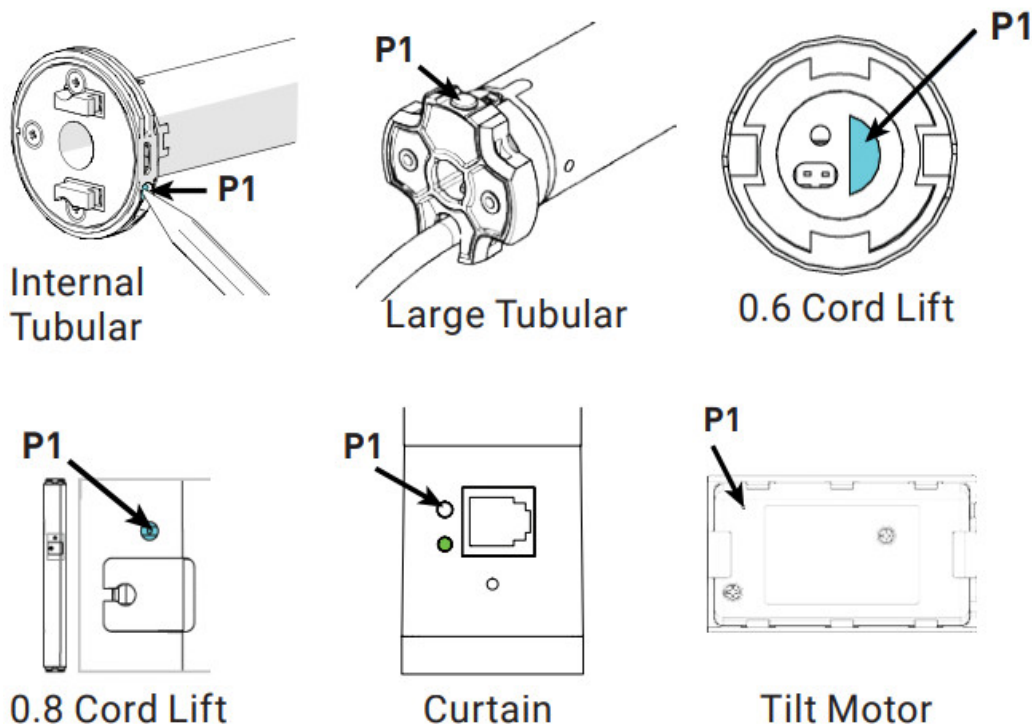
For battery motors ensure the motor is fully charged as per instructions.

INSTALLERS REMOTE

Use a spare remote to individually program each shade. Then use that remote to group rooms as per the user's needs. If you go back and service the installation later then, that same remote can be used to check the individual shades.

PRODUCT RANGE & P1 LOCATIONS

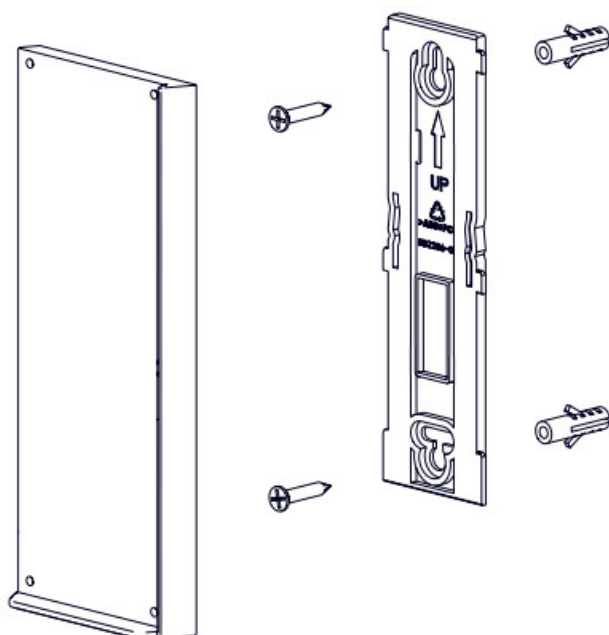
The Quick Start Programming Guide is universal for all Automate Motors including:



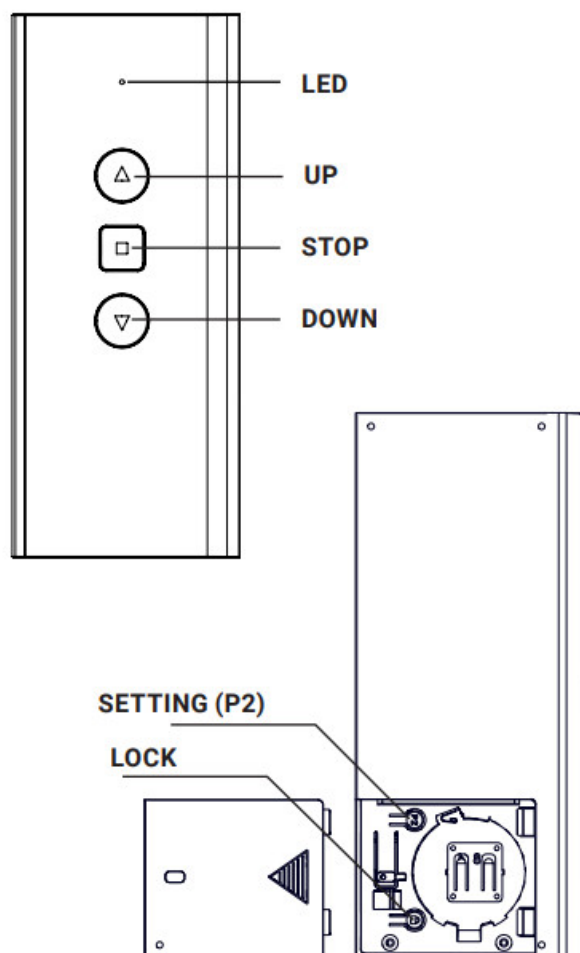
⚠ Note: Curtain motor does not Jog but instead LED flashes

WALL MOUNTING

Use supplied fasteners and anchors to attach the base to wall.



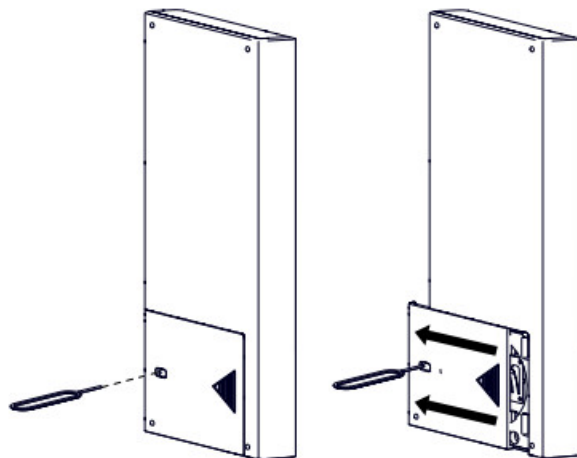
BUTTON OVERVIEW



REPLACE BATTERY

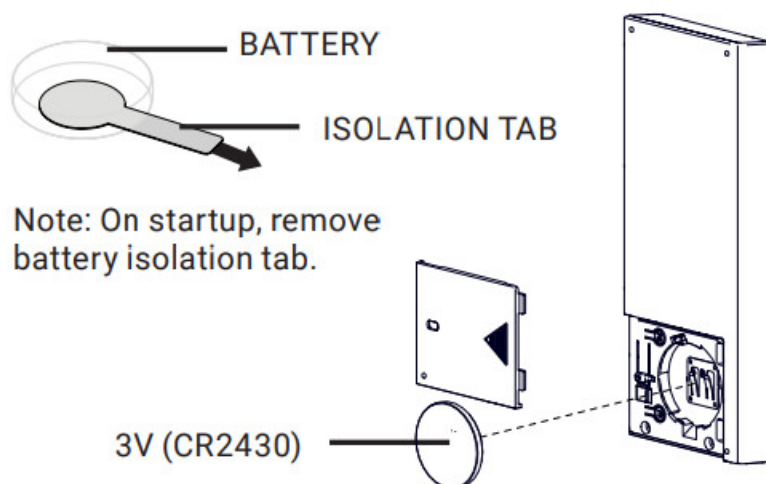
STEP 1.

Use a tool (such as a SIM card pin, mini screwdriver, etc.) to push the battery cover release button and simultaneously slide the battery cover in the direction shown.



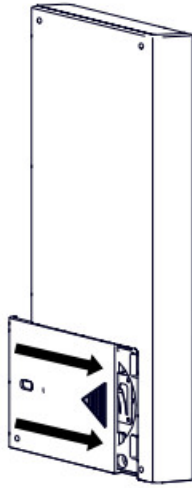
STEP 2.

Install CR2430 Battery with positive (+) side facing up.



STEP 3.

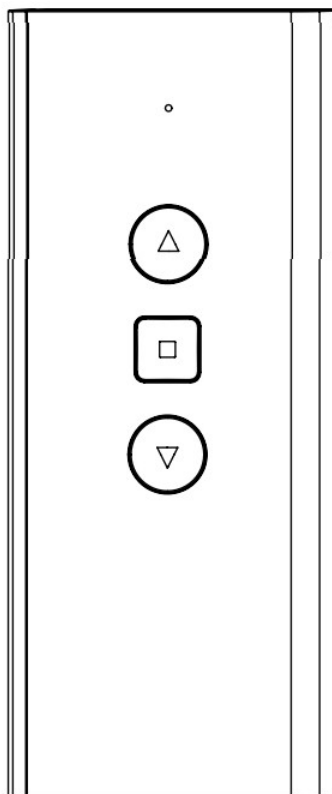
Slide up to lock the battery door



INSTALLER

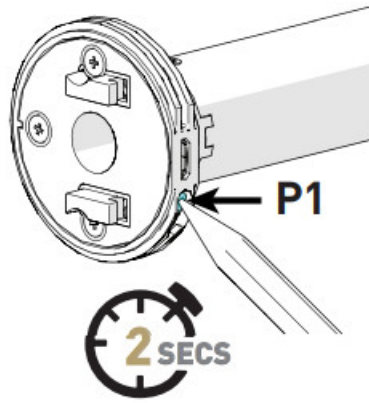
This setup wizard should be used for new installation or factory reset motors only. Individual steps may not work if you haven't followed the setup from the beginning.

ON REMOTE STEP 1.



Ensure your remote is powered on.

STEP 2.



* Internal Tubular Motor pictured. Refer to “P1 Locations” for specific devices.
Press the P1 button on the motor for 2 Seconds until the motor responds as below.

MOTOR RESPONSE



Within 4 seconds hold the stop button on the remote for 3 seconds.
The motor will respond with Jog and Beep.

MOTOR RESPONSE



CHECK DIRECTION

STEP 3.

Press up or down to check the motor direction.

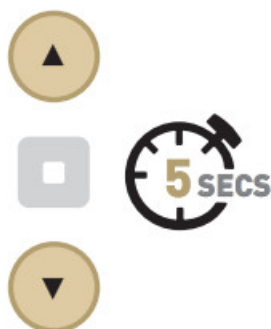
If correct skip to step 5.



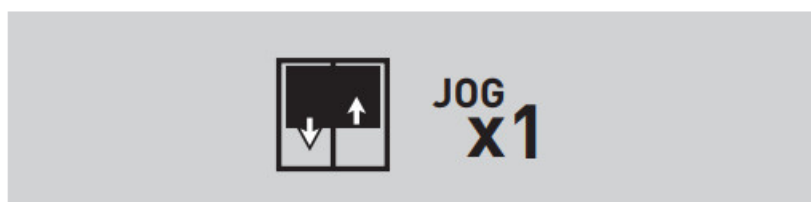
CHANGE DIRECTION

STEP 4.

If the shade direction needs to be reversed; press and hold the UP & DOWN arrow together for 5 seconds until the motor jogs.

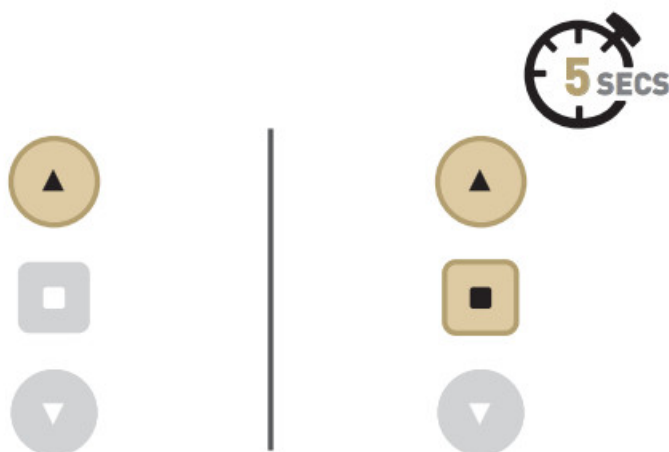


MOTOR RESPONSE



Reversing motor direction using this method is only possible during initial set-up.

SET TOP LIMIT STEP 5.



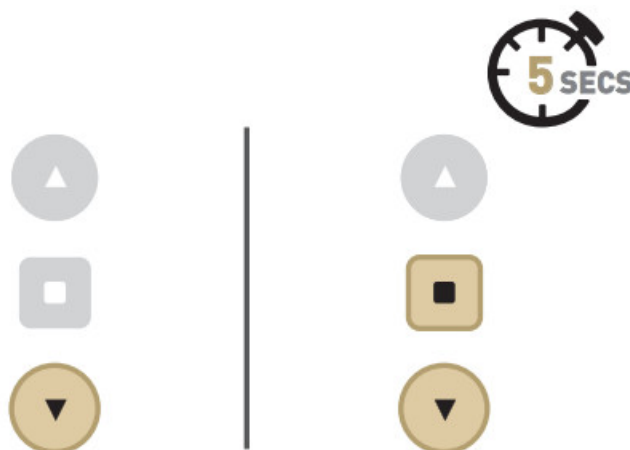
Move shade to desired top limit by pressing the up arrow repeatedly. Then press and hold up & stop together for 5 sec to save limit.

Tap the arrow several times or hold down if needed; press arrow to stop.

MOTOR RESPONSE



SET BOTTOM LIMIT STEP 6.



Move shade to desired bottom limit by pressing the down arrow repeatedly. Then press and hold down & stop together for 5 sec to save limit.

Tap the arrow several times or hold down if needed; press arrow to stop.

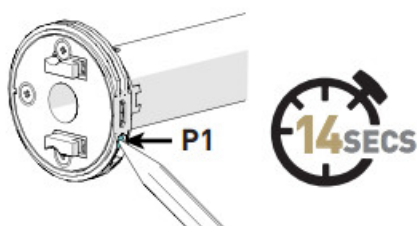
MOTOR RESPONSE



MOTOR RESET PROCEDURE

FACTORY RESET

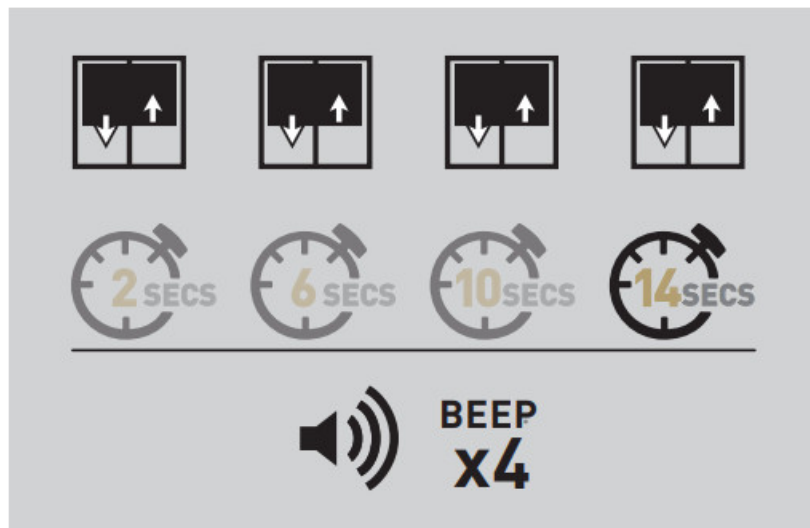
To reset all settings in the motor press and hold the P1 Button for 14 seconds, you should see 4 independent jogs followed by 4x Beeps at the end.



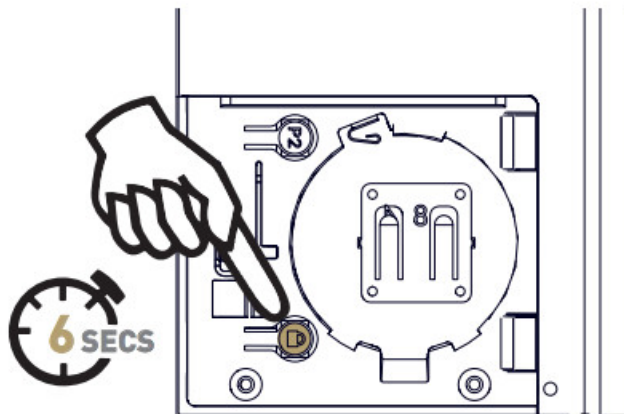
(Internal Tubular pictured above.


Refer to "P1 Locations" for specific devices.)

MOTOR RESPONSE

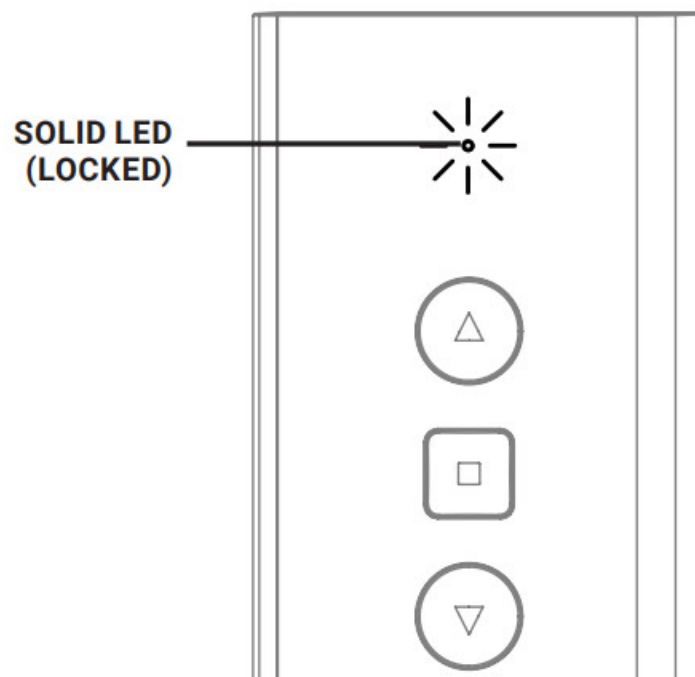


**SAVE YOUR LIMIT
STEP 7.**



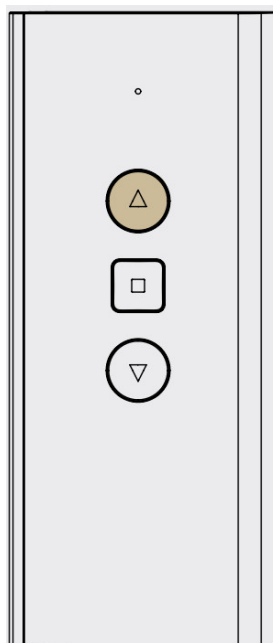
 Repeat steps 1-6 for all motors before locking the remote.

Once complete Press and hold the Lock button for 6 seconds while looking at the LED, and hold until solid.

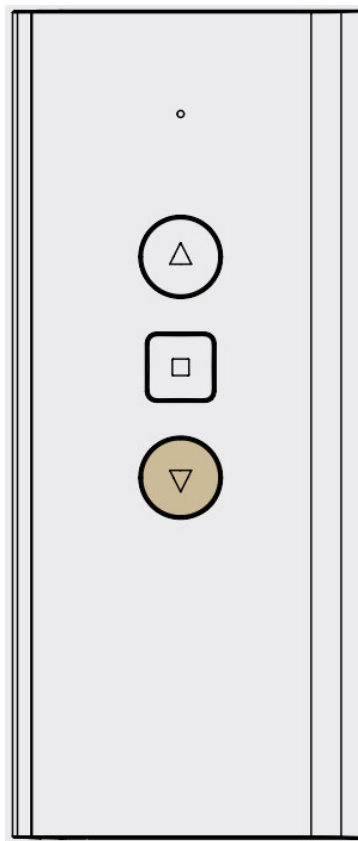


CONTROLLING A SHADE

CONTROL SHADE UP

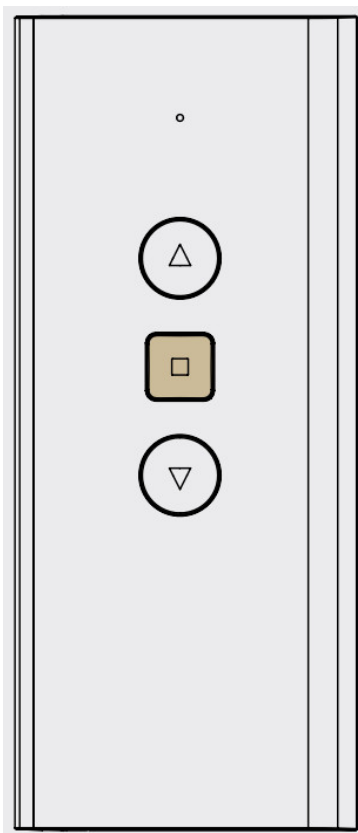


CONTROL SHADE DOWN



STOPPING THE SHADE

Press the STOP button to stop shade at any point.

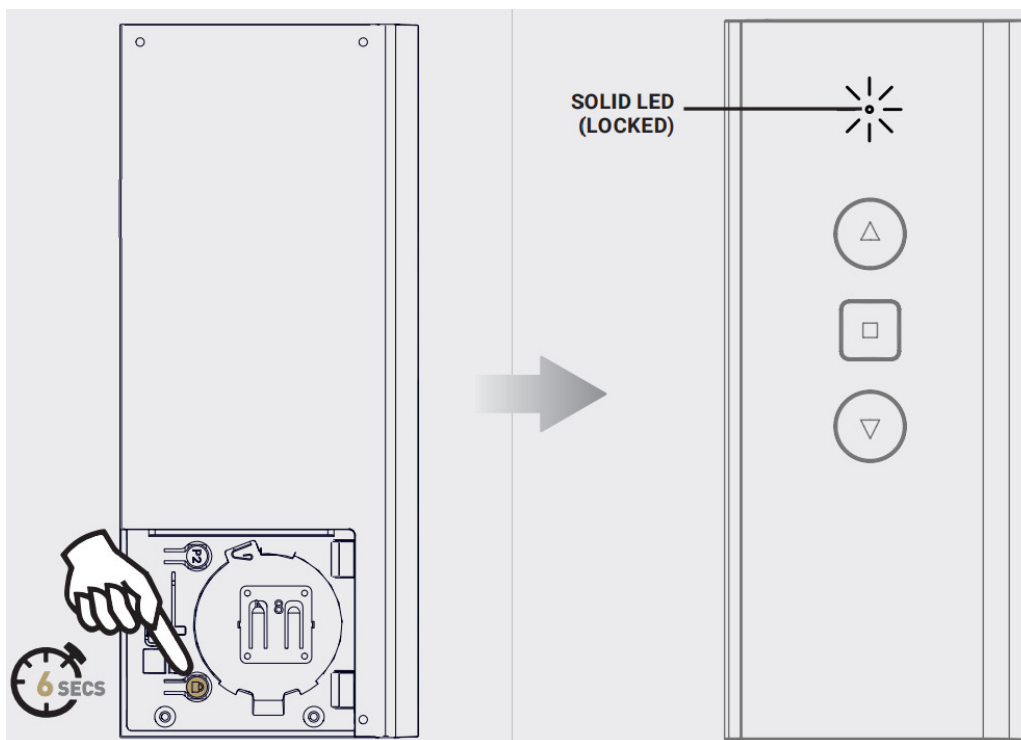


DISABLE LIMIT SETTING – LOCK BUTTON

Note: Ensure all shade programming for all motors is completed before locking the remote. This mode is intended to be used after all shade programming is completed. User Mode will prevent accidental or unintended changing of limits.

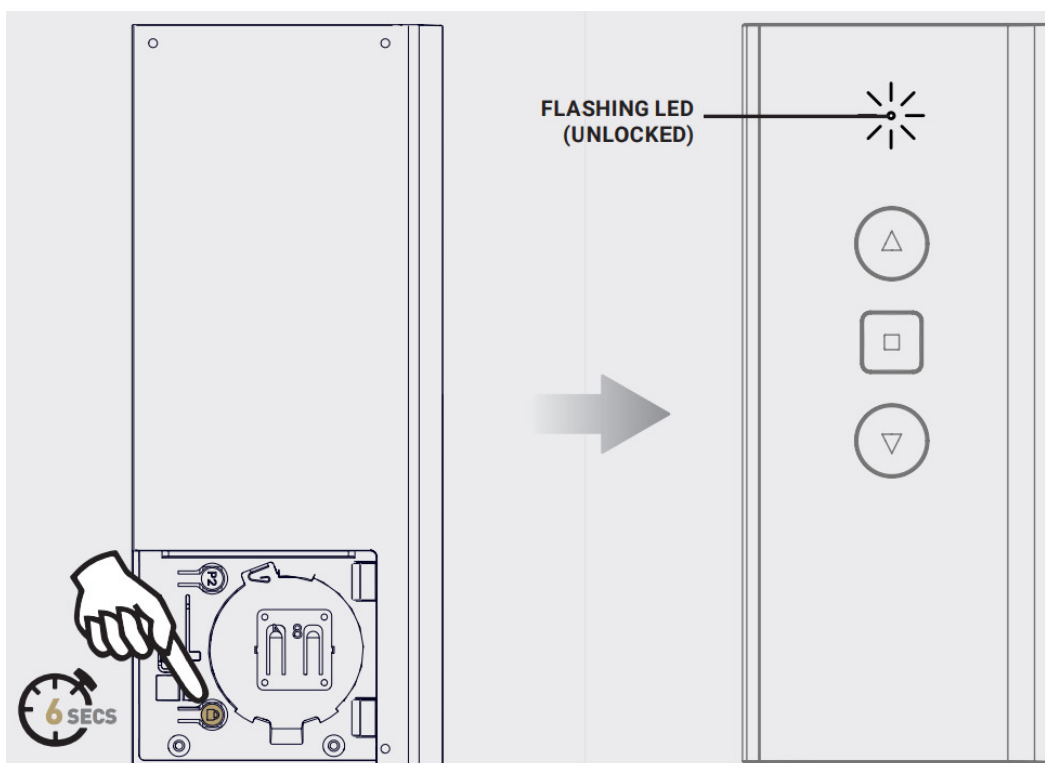
LOCK REMOTE

Pressing the lock button for 6 second will Lock the remote and LED will show solid.

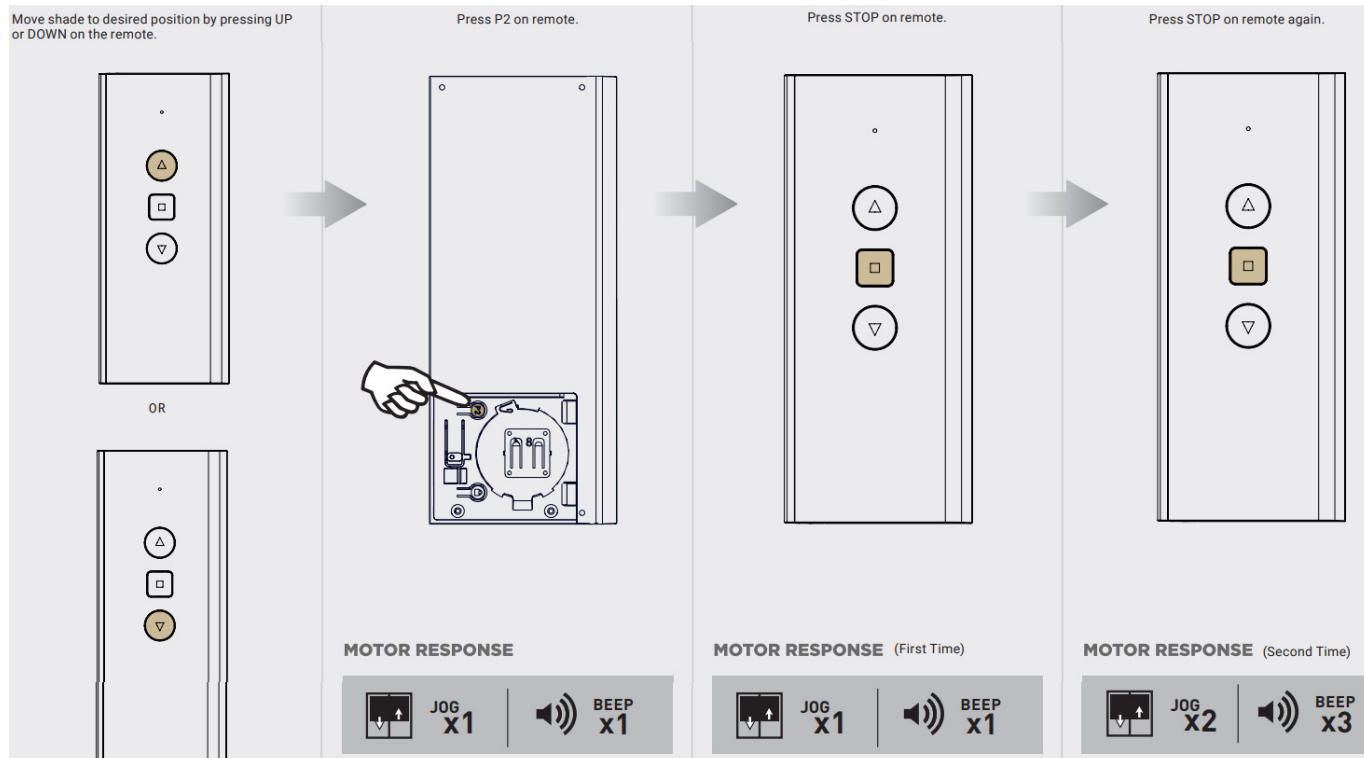


UNLOCK REMOTE

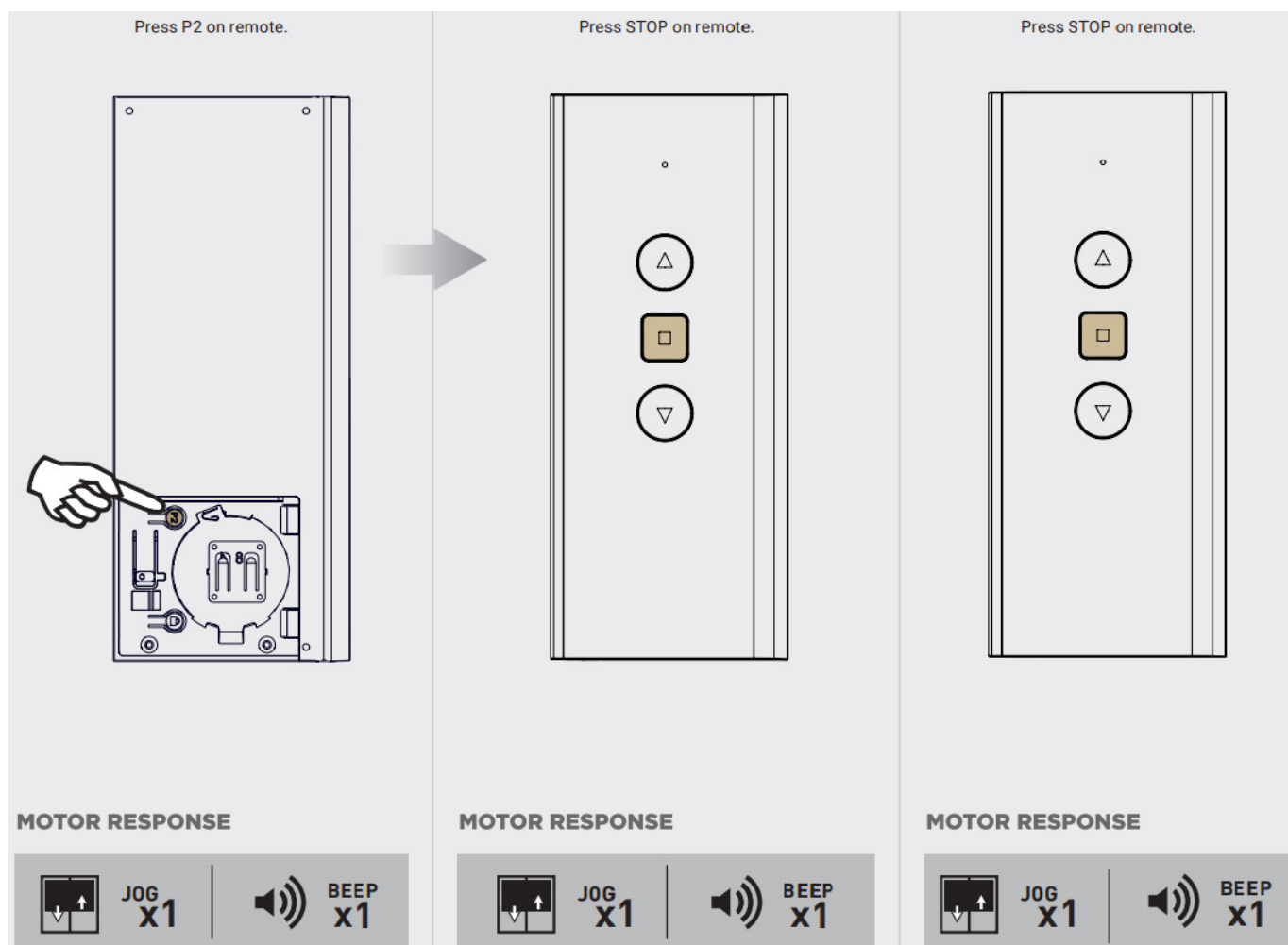
Pressing the lock button for 6 second will Unlock the remote and LED will show flashing.



SET A FAVORITE POSITION



DELETE FAVORITE POSITION



Documents / Resources



[AUTOMATE Push ONE 1 Channel Remote](#) [pdf] User Guide
MT02-0101-xxx010_v1.3_08032024, Push ONE 1 Channel Remote, Push ONE, 1 Channel Remote, Channel Remote, Remote

References

- [User Manual](#)

Manuals+, Privacy Policy

This website is an independent publication and is neither affiliated with nor endorsed by any of the trademark owners. The "Bluetooth®" word mark and logos are registered trademarks owned by Bluetooth SIG, Inc. The "Wi-Fi®" word mark and logos are registered trademarks owned by the Wi-Fi Alliance. Any use of these marks on this website does not imply any affiliation with or endorsement.