




AUTOMATE Push 15 Channel Remote Control User Guide

[Home](#) » [AUTOMATE](#) » AUTOMATE Push 15 Channel Remote Control User Guide 

AUTOMATE Push 15 Channel Remote Control User Guide

AUTOMATE™



Push 15

Programming
Guide

Contents

| |
|---|
| 1 SAFETY |
| 2 FCC & ISED STATEMENT |
| 3 ASSEMBLY |
| 4 BATTERY MANAGEMENT |
| 5 P1 LOCATIONS |
| 6 BUTTON OVERVIEW |
| 7 WALL MOUNTING |
| 8 HOW TO CHARGE LI-ION ZERO WIRE-FREE MOTOR |
| 9 REPLACE BATTERY |
| 10 ON REMOTE |
| 11 CHECK DIRECTION |
| 12 CHANGE DIRECTION |
| 13 SET TOP LIMIT |
| 14 SET BOTTOM LIMIT |
| 15 FACTORY RESET |
| 16 REMOTE STATE |
| 17 GROUP PROGRAMMING MODE |
| 18 GROUP CHANNEL VIEW MODE |
| 19 LEVELING CONTROL FUNCTION |
| 20 CHANNEL OR GROU SELECTION |
| 21 HIDE GROUPS |
| 22 HIDE CHANNELS |
| 23 DISABLE LIMIT SETTING – LOCK BUTTON |
| 24 SET A FAVORITE POSITION |
| 25 ADD OR DELETE CONTROLLER OR t ANNEL |
| 26 Documents / Resources |
| 27 Related Posts |

SAFETY

⚠ WARNING: Important safety instructions to be read before installation and use.

Incorrect installation or use can lead to serious injury and will void manufacturer's liability and warranty. It is important for the safety of persons to follow the enclosed instructions. Save these instructions for future reference.

- Do not expose to water, moisture, humid and damp environments or extreme temperatures.
- Persons (including children) with reduced physical, sensory or mental capabilities, or lack of experience and knowledge, should not be allowed to use this product.
- Use or modification outside the scope of this instruction manual will void warranty.
- Installation and programming to be performed by a suitably qualified installer.
- Follow installation instructions.
- For use with motorized shading devices.
- Frequently inspect for improper operation. Do not use if repair or adjustment is necessary.
- Keep clear when in operation.
- Replace battery with correctly specified type.

⚠ WARNING: Do not ingest battery, Chemical Burn Hazard.

This product contains a coin/button cell battery. If the coin/button cell battery is swallowed, it can cause severe internal burns in just 2 hours and can lead to death.

Keep new and used batteries away from children. If the battery compartment does not close securely, stop using the product and keep it away from children.

If you think batteries might have been swallowed or placed inside any part of the body, seek immediate medical attention.



Operation Temperature Range, -10°C to +50°C Ratings, JVDC, 15mA

FCC & ISED STATEMENT

This device complies with part 15 of the FCC Rules. Operation is subject to the following two conditions: (1) This device may not cause harmful interference, and (2) this device must accept any interference received, including interference that may cause undesired operation. Caution: Changes or modifications to this unit not expressly approved by the party responsible for compliance could void the user's authority to operate the equipment.

This device contains licence-exempt transmitter(s)/receiver(s) that comply with Innovation, Science and Economic Development Canada's licence-exempt RSS(s). Operation is subject to the following two conditions: (1) This device may not cause interference. (2) This device must accept any interference, including interference that may cause undesired operation of the device.

NOTE: This equipment has been tested and found to comply with the limits for a Class B digital device, pursuant to part 15 of the FCC Rules. These limits are designed to provide reasonable protection against harmful interference in a residential installation. This equipment generates, uses and can radiate radio frequency energy and, if not installed and used in accordance with the instructions, may cause harmful interference to radio communications. However, there is no guarantee that interference will not occur in a particular installation. If this equipment does cause harmful interference to radio or television reception, which can be determined by turning the equipment off and on, the user is encouraged to try to correct the interference by one or more of the following measures:

- reorient or relocate the receiving antenna.
- Increase the separation between the equipment and receiver.
- Connect the equipment into an outlet on a circuit different from that to which the receiver is connected.
- Consult the dealer or an experienced radio/TV technician for help.

ASSEMBLY

Please refer to separate Release Almeda System Assembly Manual for full assembly instructions relevant to the hardware system being used.

BATTERY MANAGEMENT

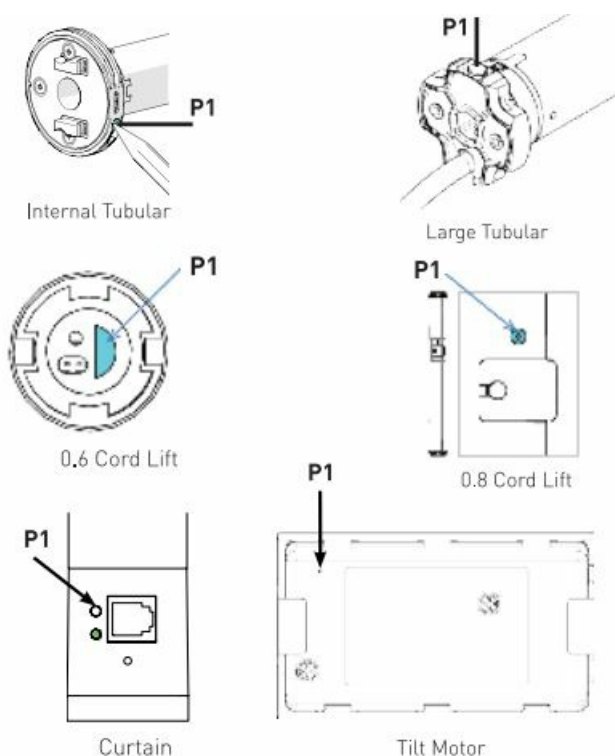
Prevent discharging the battery completely for extended periods, recharge as soon as the battery is discharged

CHARGING NOTES

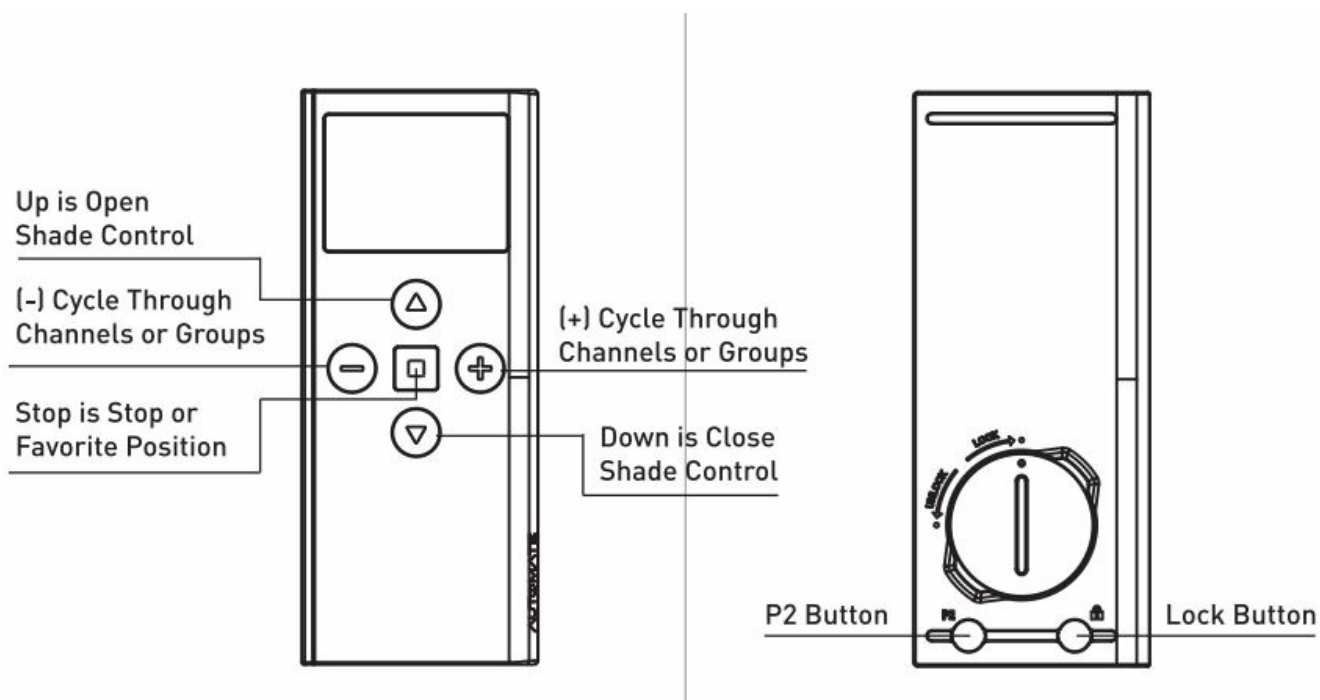
Charge your motor for 6-8 hours, depending on the motor model, as per motor instructions

⚠ During operation, if battery is low, the motor will beep 10 times to prompt the user it needs charging.

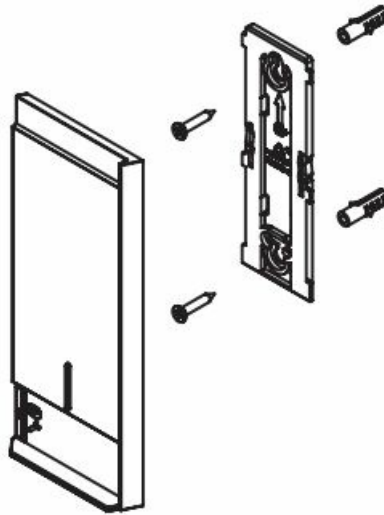
P1 LOCATIONS



BUTTON OVERVIEW



WALL MOUNTING



Use supplied fasteners and anchors to attach the base to wall.

HOW TO CHARGE LI-ION ZERO WIRE-FREE MOTOR



STEP 1

Rotate cover cap to expose motor head



STEP 2

Find nearest power source and plug in charger (use an extension cord if required)



STEP 3

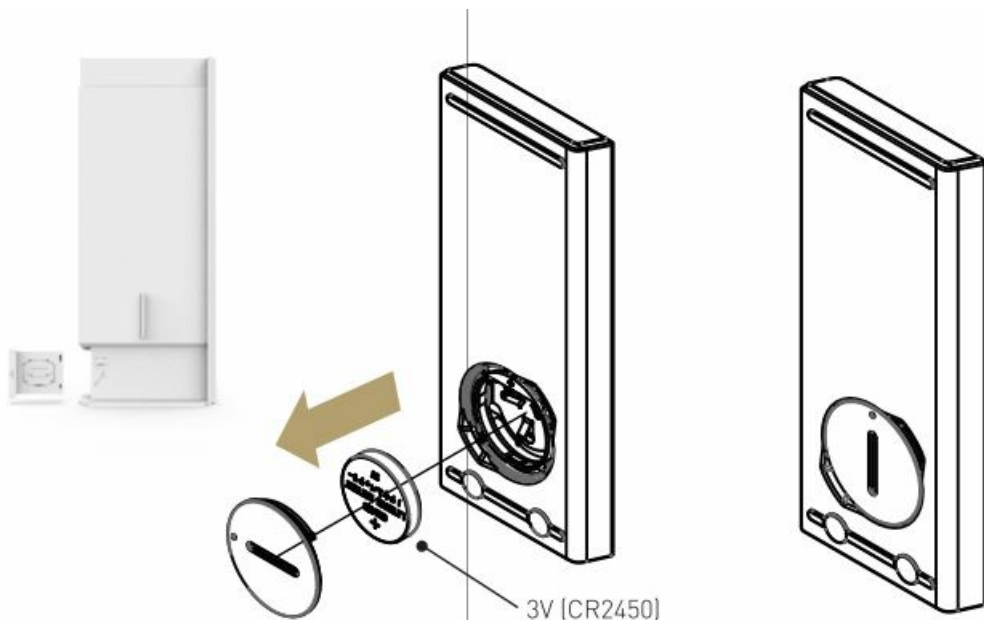
Plug micro USB end into the motor

- Observe the green light flashing and charge until the green light goes solid green
- Please note this may take up to eight hours depending on how flat your battery is
- Any mobile phone charger can also be used to charge your motor

STEP 4

Unplug and return cover cap to conceal motor head

REPLACE BATTERY

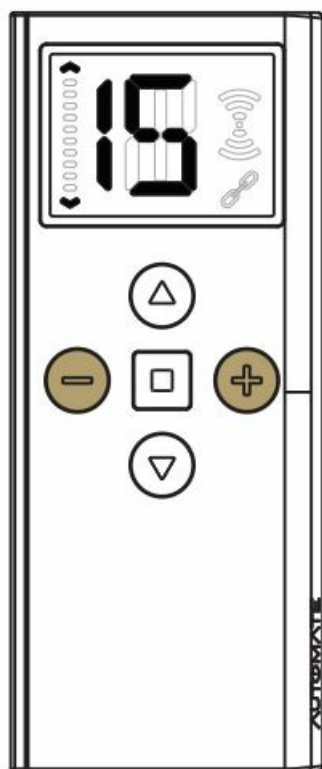


Twist the battery cover with coin/tool provided in the cradle, to Unlock and replace the battery negative side facing up.

Replace the cover by turning the cover to the locked position

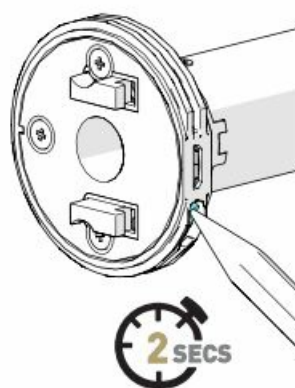
ON REMOTE

STEP 1.



Select the desired channel you wish to program by scrolling using the (+) or (-) Buttons.

STEP 2.



* Internal Tubular Motor pictured. Refer to "P1 Locations" for specific devices

Press the **P1 button** on the motor for **2 Seconds** until the motor responds as below

MOTOR RESPONSE



JOG
X1



BEEP
X1

Within 4 seconds hold the stop button on the remote for 3 seconds.
The motor will respond with Jog and Beep

MOTOR RESPONSE



JOG
X2



BEEP
X3

CHECK DIRECTION

STEP 3.

Press up or down to check the motor direction. If correct skip to step 5.



CHANGE DIRECTION

STEP 4.

If the shade direction needs to be reversed; press and hold the **up & down arrow together for 5 seconds** until the motor Jogs.



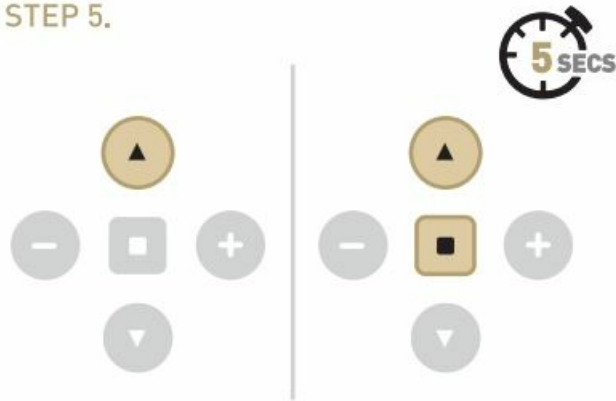
MOTOR RESPONSE



Reversing motor direction using this method is only possible during initial set-up.

SET TOP LIMIT

STEP 5.



Move shade to desired top limit by pressing the **up arrow** repeatedly. Then press and hold **up & stop together for 5 sec** to save limit.

Tap the arrow several times or hold down if needed; press arrow to stop.

MOTOR RESPONSE



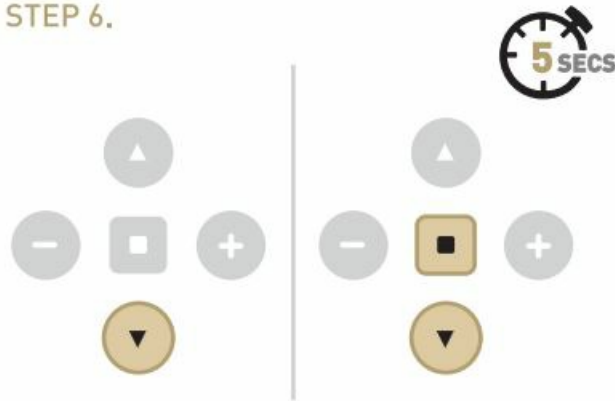
JOG
X2



BEEP
X3

SET BOTTOM LIMIT

STEP 6.



Move shade to desired bottom limit by pressing the **down arrow** repeatedly. Then press and hold **down & stop together for 5 sec** to save limit.

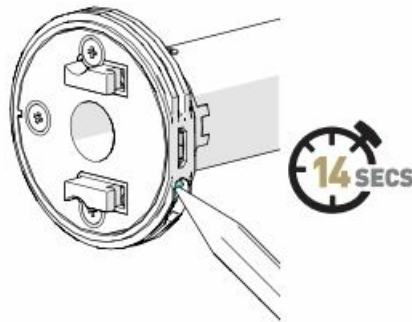
Tap the arrow several times or hold down if needed; press arrow to stop.

MOTOR RESPONSE



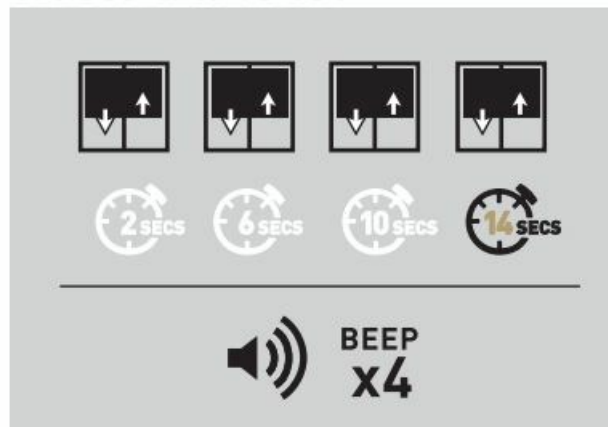
FACTORY RESET

To reset all settings in the motor press and hold the **P1 Button for 14 seconds**, you should see **4 independent jogs** followed by **4x Beeps** at the end.

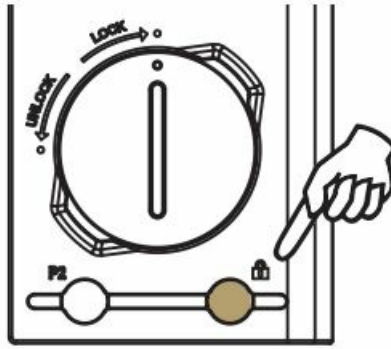


* Internal Tubular Motor pictured above.
Refer to "P1 Locations" for specific devices

MOTOR RESPONSE

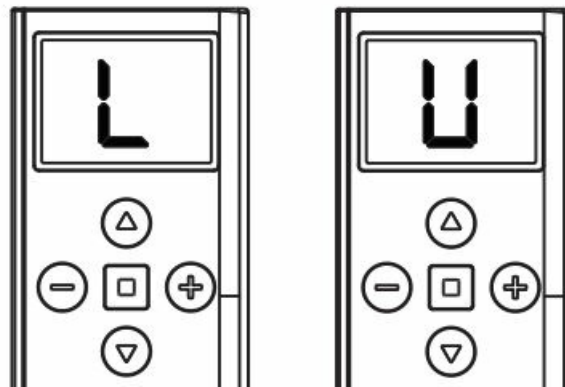


REMOTE STATE



Refer to DISABLE LIMIT SETTINGS
for further details

Pressing the lock button will display
the state of the remote.



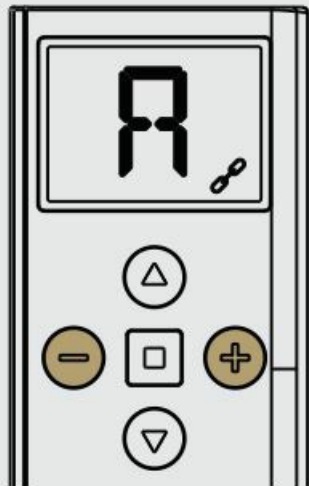
Locked

Unlocked

GROUP PROGRAMMING MODE

It is possible to add Individual Channels [1- 5] to create Custom Groups [A-E]

STEP 1.



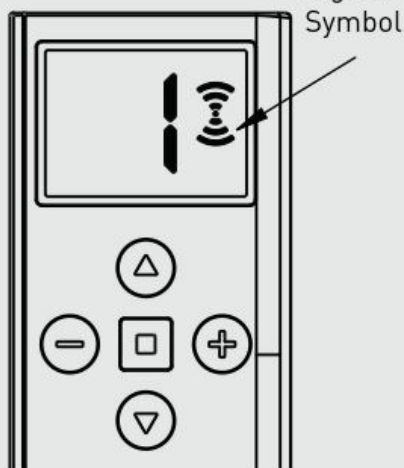
Cycle past Channel 1-15 and Select a Group to program from A-E.

STEP 2.



Hold (-) and STOP buttons for 4 seconds. During this time "G" will be displayed. Select a Group from A - E to program. (If no buttons are pressed for 90 seconds the remote will exit out of this mode)

STEP 3.



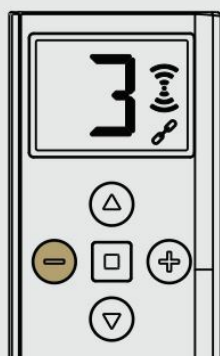
Remote is now in Group Programming Mode. Signal Symbol will be shown and Individual Channel "1" will be displayed.

STEP 4.



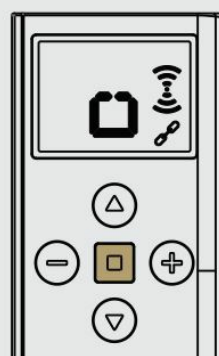
Use (+) button to cycle to desired Individual Channel you want to add to that group (Channel 3 used as an example)
Note: Only (+) button can be used to cycle through channels
DO NOT USE (-) BUTTON TO SELECT A CHANNEL

STEP 5.



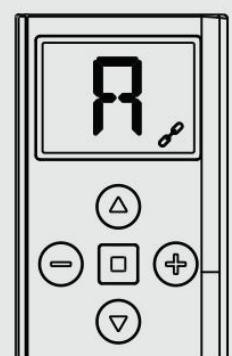
Use (-) button to toggle on/off the inclusion into the Group Channel **Note:** Group Channel Indicator will be shown to indicate Channel is added]

STEP 6.



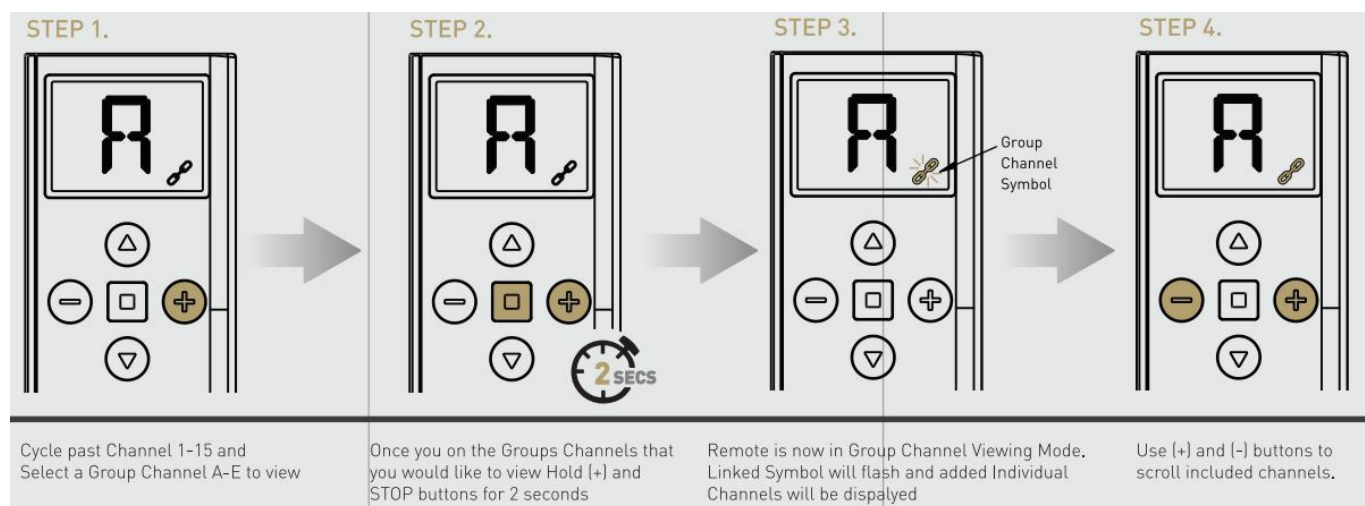
Once desired Individual Channels have been added, press the STOP button to confirm changes. The screen above will be shown for 4 seconds

STEP 7.

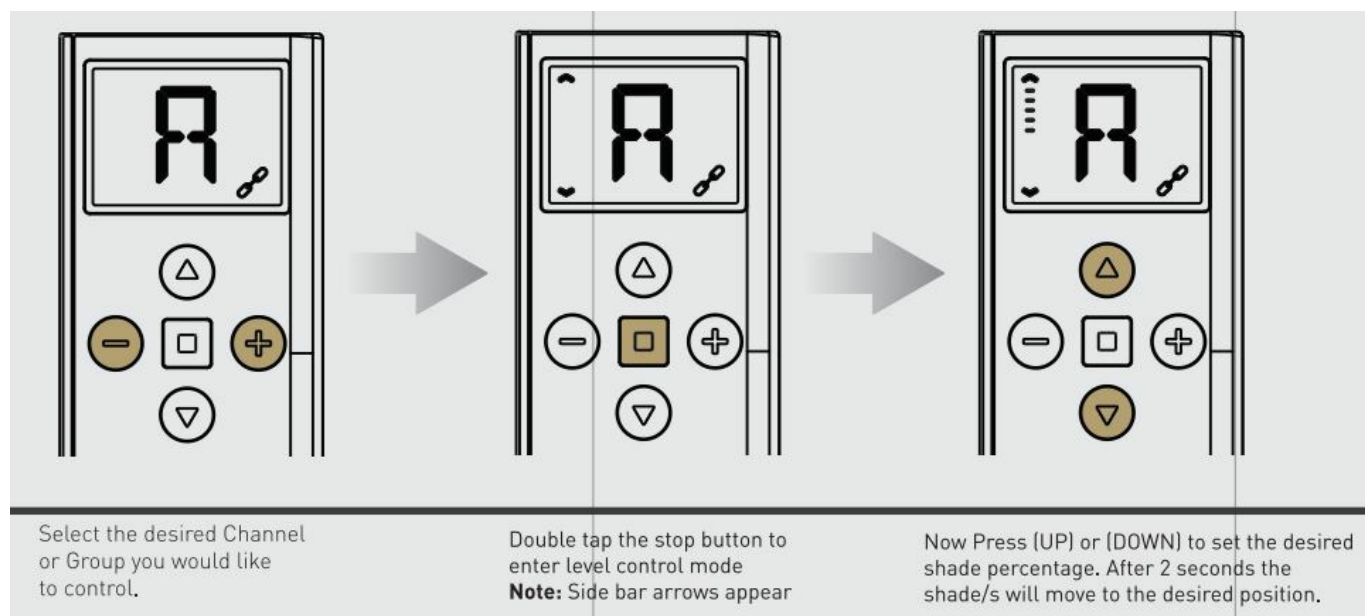


The remote has now returned to Normal Mode. The Group Channel is ready to use

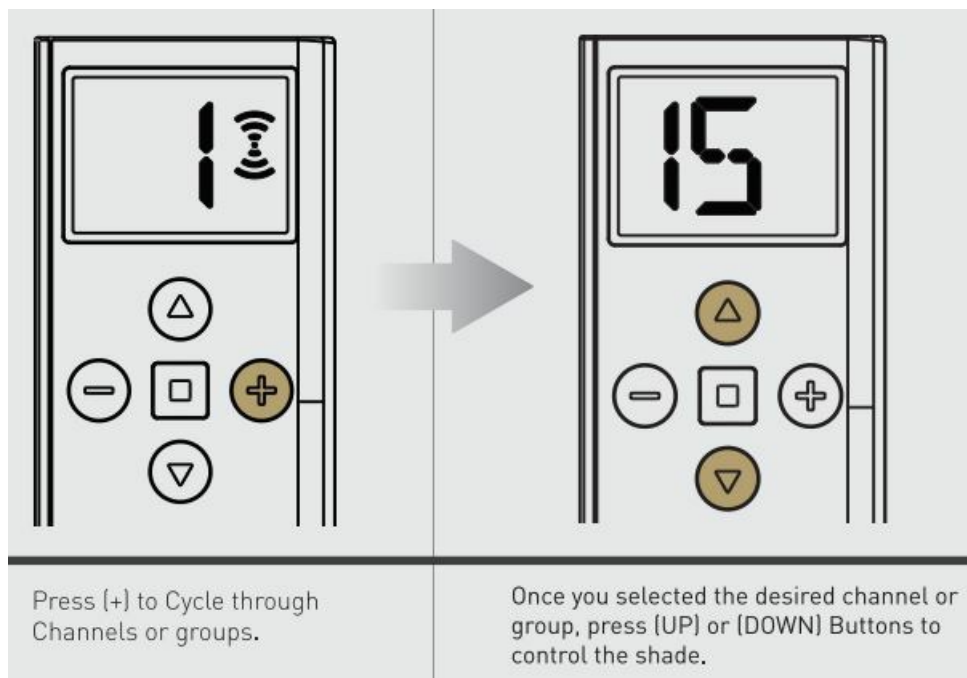
GROUP CHANNEL VIEW MODE



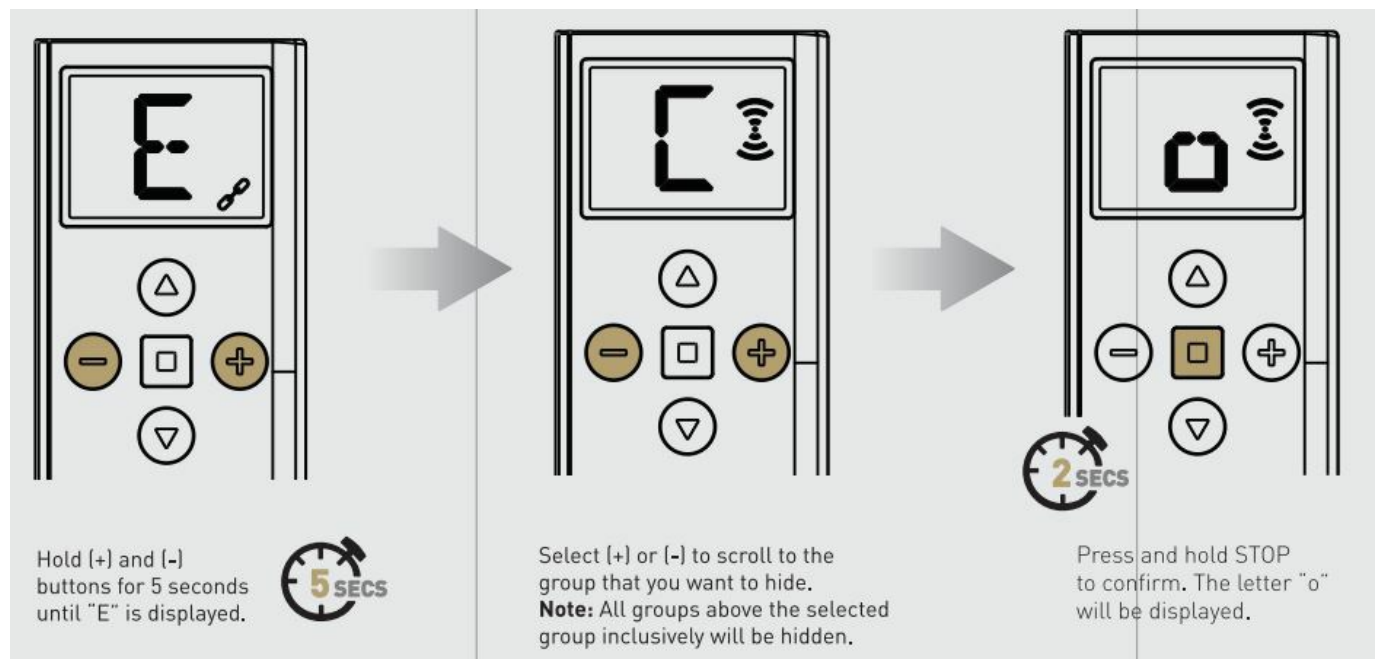
LEVELING CONTROL FUNCTION



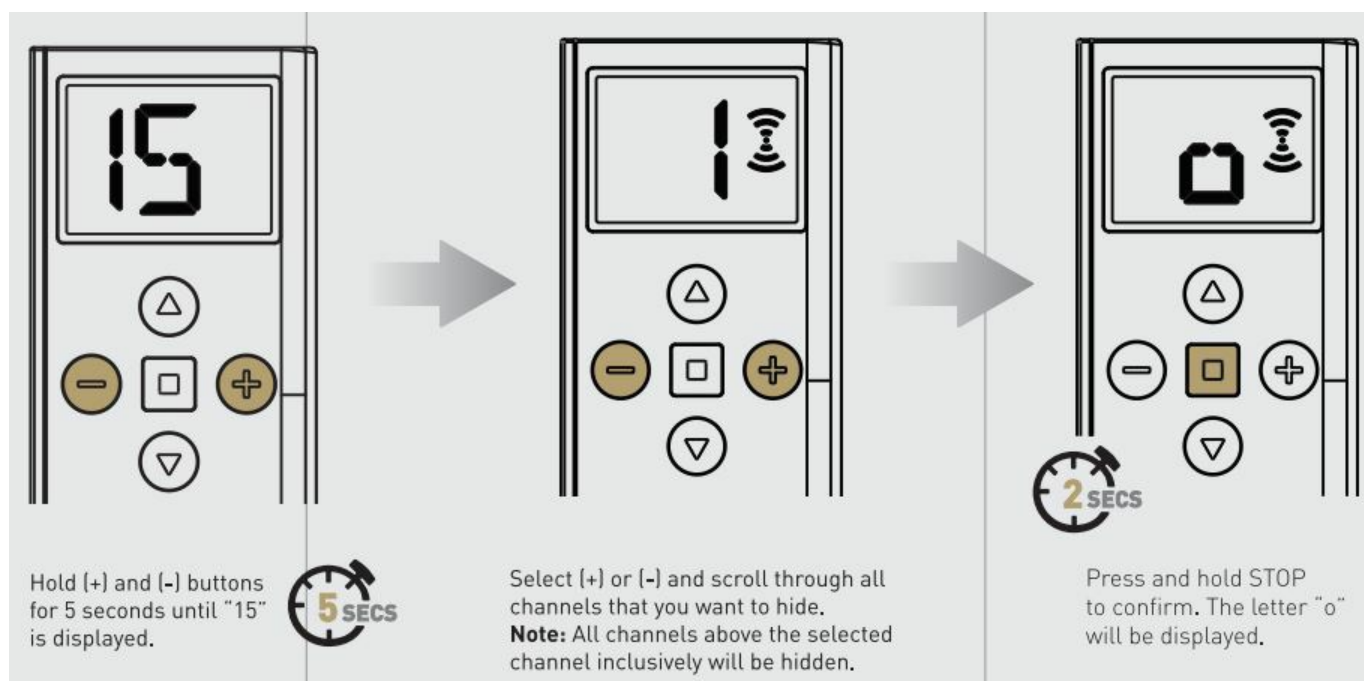
CHANNEL OR GROU SELECTION



HIDE GROUPS

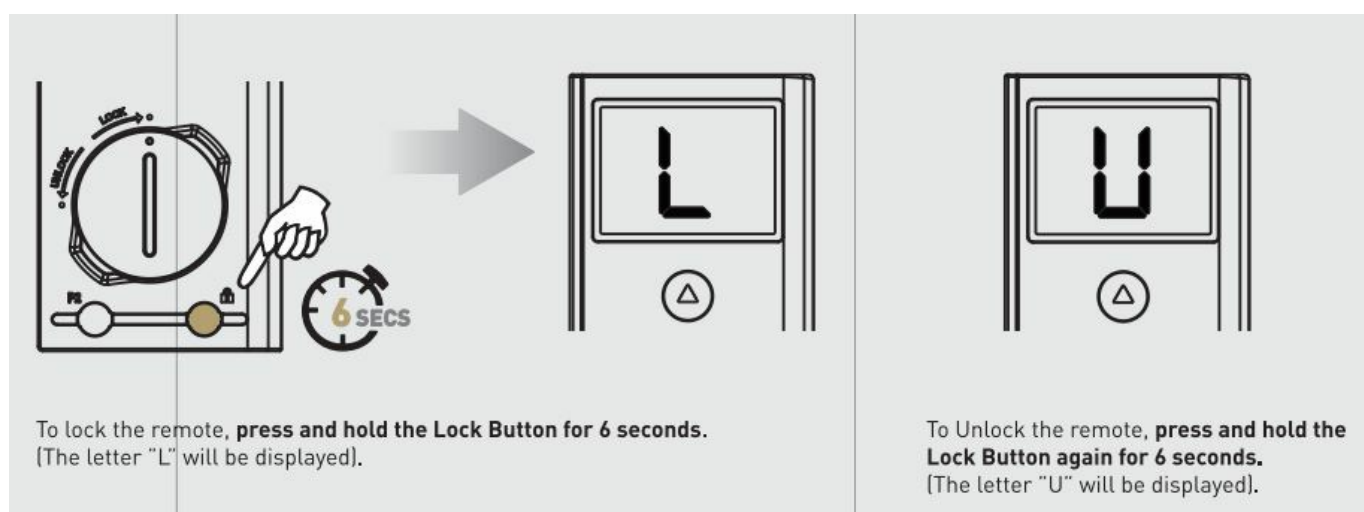


HIDE CHANNELS

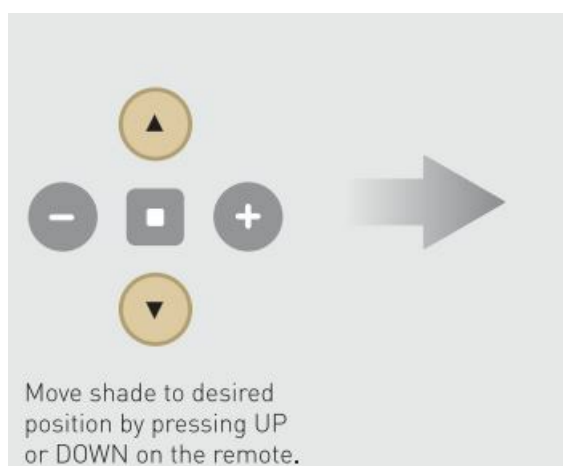


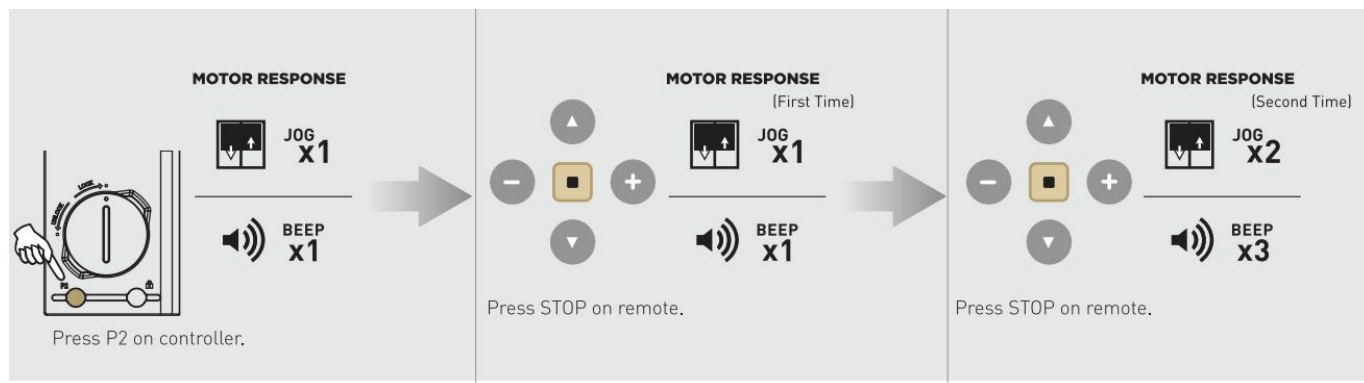
DISABLE LIMIT SETTING – LOCK BUTTON

Note: Ensure all shade programming for all motors is completed before locking the remote.
User mode prevent accidental or unintended changing of limits.

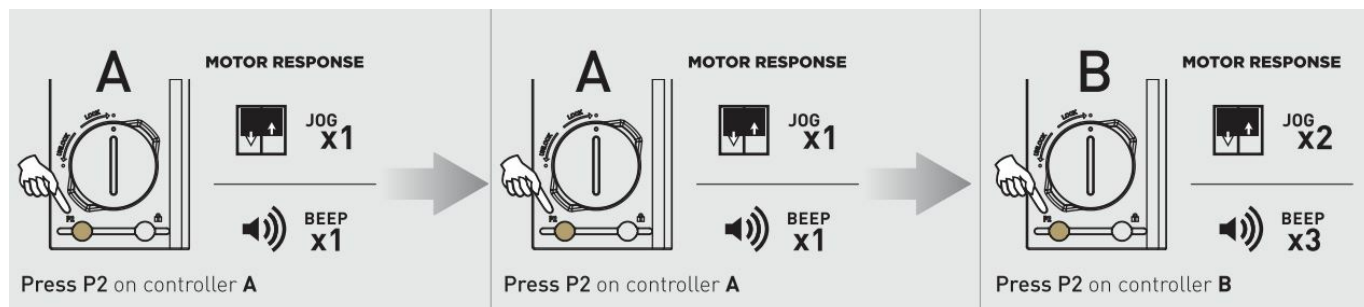


SET A FAVORITE POSITION





ADD OR DELETE CONTROLLER OR t ANNEL



Documents / Resources

[AUTOMATE Push 15 Channel Remote Control \[pdf\] User Guide](#)

Push 15 Channel Remote Control, Push 15, Channel Remote Control, Remote Control