

AUTOMATE.
AUTOMATE MT02-0101 Push
15 Channel Remote Control



AUTOMATE MT02-0101 Push 15 Channel Remote Control User Guide

[Home](#) » [AUTOMATE](#) » AUTOMATE MT02-0101 Push 15 Channel Remote Control User Guide 

Contents

- 1 AUTOMATE MT02-0101 Push 15 Channel Remote Control
- 2 SAFETY
- 3 FCC & ISED STATEMENT
- 4 ASSEMBLY
- 5 BATTERY MANAGEMENT
- 6 BUTTON OVERVIEW
- 7 FACTORY RESET
- 8 REMOTE STATE
- 9 CHANNEL OR GROUP SELECTION
- 10 HIDE GROUPS
- 11 HIDE CHANNELS
- 12 DISABLE LIMIT SETTING – LOCK BUTTON
- 13 SET A FAVORITE POSITION
- 14 ADD OR DELETE CONTROLLER OR CHANNEL
- 15 Documents / Resources
 - 15.1 References
- 16 Related Posts

AUTOMATE.
AUTOMATE MT02-0101 Push 15 Channel Remote Control



Automate Push 15 Programming Guide

Safety

WARNING: Important safety instructions to be read before installation and use. Incorrect installation or use can lead to serious injury and will void manufacturer's liability and warranty. It is important for the safety of persons to follow the enclosed instructions. Save these instructions for future reference.

- Do not expose to water, moisture, humid and damp environments or extreme temperatures.
- Persons (including children) with reduced physical, sensory or mental capabilities, or lack of experience and knowledge, should not be allowed to use this product.
- Installation and programming to be performed by a suitably qualified person.
- Follow installation instructions. For use with motorized shading devices.
- Frequently inspect for improper operation. Do not use if repair or adjustment is necessary. Keep clear when in operation.

Battery: CR2450 | 3VDC

Incorrect batteries may cause severe injury or death. Call a local poison control center for treatment information. Non-rechargeable batteries are not to be recharged. Do not force discharge, recharge, disassemble, heat above 100°C (212°F) or incinerate. Doing so may result in injury due to venting, leakage or explosion resulting in chemical burns.

- Ensure the batteries are installed correctly according to polarity (+ and -).
- Do not mix old and new batteries, different brands or types of batteries, such as alkaline, carbon-zinc, or rechargeable batteries.
- Remove and immediately recycle or dispose of batteries from equipment not used for an extended period of time according to local regulations.
- Always completely secure the battery compartment. If the battery compartment does not close securely, stop using the product, remove the batteries, and keep them away from children.
- Do NOT dispose of batteries in household trash or incinerate.

FCC & ISED Statement

FCC ID: 2AGGZMT020101008

IC: 21769-MT020101008

This device complies with part 15 of the FCC Rules. Operation is subject to the following two conditions:

1. This device may not cause harmful interference.
2. This device must accept any interference received, including interference that may cause undesired operation.

This device contains licence-exempt transmitter(s)/receiver(s) that comply with Innovation, Science and Economic Development Canada's licence-exempt RSS(s). Operation is subject to the following two conditions:

1. This device may not cause interference.
2. This device must accept any interference, including interference that may cause undesired operation of the device.

Assembly

Follow the assembly instructions provided in the manual for proper installation.

Battery Management

Ensure proper battery installation and management to avoid operational issues.

Button Overview

- Up is Open Shade Control
- Stop is Stop or Favorite Position
- Activate Pairing Mode

Wall Mounting

Use supplied fasteners and attach the base to the wall.

How to Charge Li-ion Zero Wire-Free Motor

1. Remove end cap to expose motor charging port.
2. Insert USB cable into charging port.
3. Connect USB end to a power source.
4. Reattach end cap after charging.

Replace Battery

1. Twist the battery cover to unlock.
2. Replace the battery and secure the cover.

Installer Instructions

This setup wizard should be used for new installation or factory reset motors only. Individual steps may not work if you haven't followed the setup from the beginning.

On Remote

1. Select the desired channel you wish to program by cycling using the (+) or (-) buttons.
2. Press the P1 button on the motor head. Hold for 2 seconds until the motor responds.

Check Direction

1. Press up or down to check the motor direction.
2. If incorrect, skip to step 4.

Change Direction

1. Press the P1 button to change the direction.

Set Top Limit

1. Move shade to desired top limit by pressing the up arrow repeatedly.
2. Press the stop button to set the limit.

Set Bottom Limit

1. Move shade to desired bottom limit by pressing the down arrow repeatedly.
2. Press the stop button to set the limit.

Factory Reset

To reset all settings in the motor press and hold the P1 button for 14 seconds.

Remote State

Pressing the lock button will display the state of the remote.

User Guide

Group Programming Mode

1. Cycle past Channel 1-15 and select a Group Channel A-E you wish to program.
2. Hold the stop button for 4 seconds. The remote will enter Group Programming Mode.
3. Use the up button to select individual channels.
4. Press stop to confirm selection.

Leveling Control Function

Select the desired channel. Press the up or down button to adjust the level.

Channel or Group Selection

Press the up or down button to cycle through channels or groups.

Hide Groups

1. Hold the stop button for 4 seconds to hide a group.

Hide Channels

1. Hold the stop button for 4 seconds to hide a channel.

Disable Limit Setting – Lock Button

Ensure all shade programming is completed before locking the remote.

Set a Favorite Position

1. Move shade to desired position.
2. Press stop on the remote to set.

Add or Delete Controller or Channel

1. Press P2 on controller A or B to add or delete.

Specifications

Model	MT02-0101-XXX008_V2.3_25012024
Battery	CR2450 3VDC

FAQ

- **What should I do if the motor direction is incorrect?**

Follow the steps under “Change Direction” to correct it.

- **How do I reset the motor to factory settings?**

Press and hold the P1 button for 14 seconds.

- **How can I add or delete a controller or channel?**

Use the P2 button on controller A or B to add or delete.

- **What type of battery does the remote use?**

The remote uses a CR2450 3VDC battery.

Push 15

Programming Guide

SAFETY

WARNING: Important safety instructions to be read before installation and use.

Incorrect installation or use can lead to serious injury and will void manufacturer's liability and warranty. It is important for the safety of persons to follow the enclosed instructions.

Save these instructions for future reference.

- Do not expose to water, moisture, humid and damp environments or extreme temperatures.
- Persons (including children) with reduced physical, sensory or mental capabilities, or lack of experience and knowledge, should not be allowed to use this product. will void warranty.

Installation and programming to be performed by a suitably

- Follow installation instructions.
- For use with motorized shading devices.
- Frequently inspect for improper operation.
- Do not use if repair or adjustment is necessary.
- Keep clear when in operation.

Replace battery with correctly specified type.



Battery: CR2450 | 3VDC

- Even used batteries may cause severe injury or death.
- Call a local poison control center for treatment information.
- Non-rechargeable batteries are not to be recharged.
- Do not force discharge, recharge, disassemble, heat above
- Doing so may result in injury due to venting, leakage or explosion resulting in chemical burns.
- Ensure the batteries are installed correctly according to polarity (+ and -).
- Do not mix old and new batteries, different brands or types of batteries, such as alkaline, carbon-zinc, or rechargeable batteries.
- Remove and immediately recycle or dispose of batteries from equipment not used for an extended period of time according to local regulations.
- Always completely secure the battery compartment. If the battery compartment does not close securely, stop using the product, remove the batteries, and keep them away from children.
- Do NOT dispose of batteries in household trash or incinerate.



WARNING

INGESTION HAZARD: This product contains a button cell or coin battery.

DEATH or serious injury can occur if ingested.

A swallowed button cell or coin battery can cause Internal Chemical Burns in as little as 2 hours.

KEEP new and used batteries OUT OF REACH of CHILDREN Seek immediate medical attention if a battery is suspected to be swallowed or inserted inside any part of the body.

FCC & ISED STATEMENT

- FCC ID: 2AGGZMT0201010 08
- IC: 21769-MT020101008
- Operation Temperature Range: -10°C to +50°C Ratings: 3VDC, 15mA

This device complies with part 15 of the FCC Rules. Operation is subject to the following two conditions:

1. This device may not cause harmful interference, and
2. This device must accept any interference received, including interference that may cause undesired operation.

Caution:

approved by the party responsible for compliance could void the user's authority to operate the equipment.

This device contains license-exempt transmitter(s)/receiver(s) that comply with Innovation, Science and Economic Development Canada's license-exempt RSS(s). Operation is subject to the following two conditions:

1. This device may not cause interference.
2. This device must accept any interference, including interference that may cause undesired operation of the device.

NOTE: This equipment has been tested and found to comply with the limits for a Class B digital device, pursuant to part 15 of the FCC Rules. These limits are designed to provide reasonable protection against harmful interference in a residential installation. This equipment generates, uses and can radiate radio frequency energy and, if not installed and used in accordance with the instructions, may cause harmful interference to radio communications. However, there is no guarantee that interference will not occur in a particular installation. If this equipment does cause harmful interference to radio or television reception, which can be determined by turning the equipment off and on, the user is encouraged to try to correct the interference by one or more of the following measures:

- Reorient or relocate the receiving antenna.
- Increase the separation between the equipment and receiver.
- Connect the equipment into an outlet on a circuit different from that to which the receiver is connected.
- Consult the dealer or an experienced radio/TV technician for help

ASSEMBLY

Please refer to separate Roll ease Acneda System Assembly Manual for full assembly instructions relevant to the hardware system being used.

BATTERY MANAGEMENT

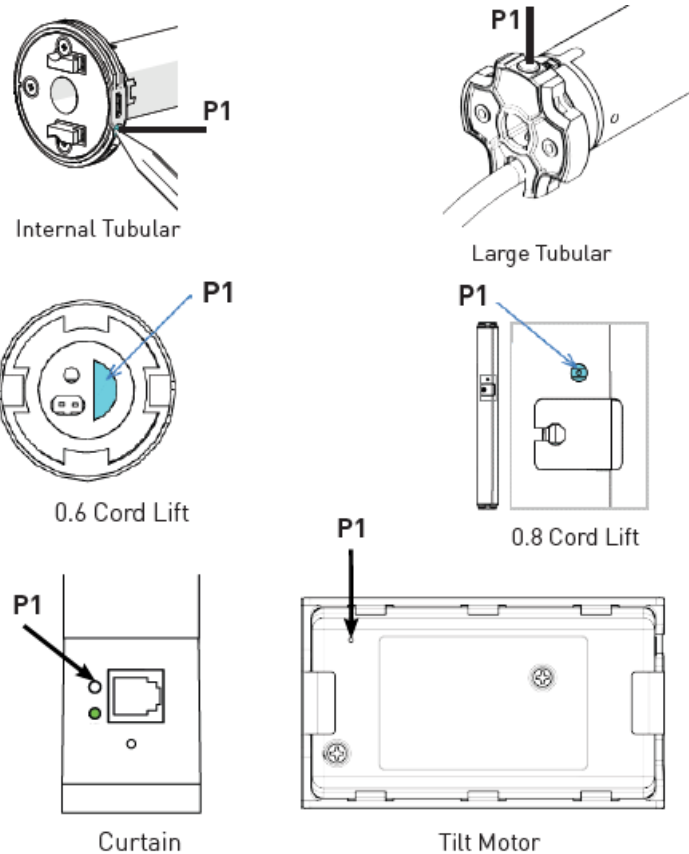
For battery motors;

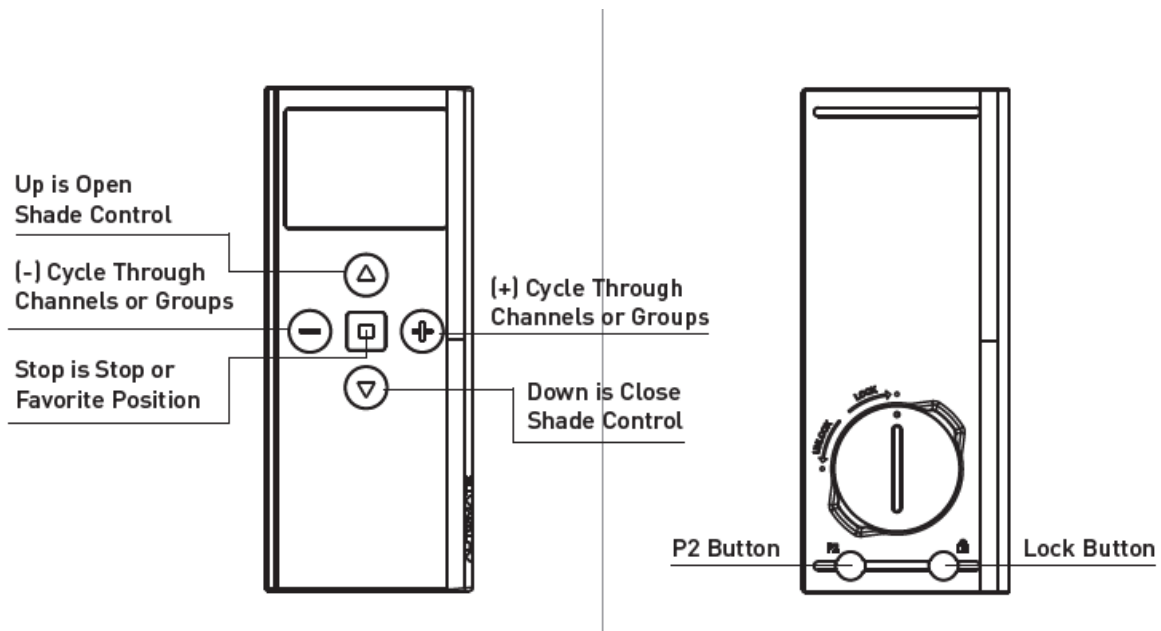
Prevent discharging the battery completely for extended periods, recharge as soon as the battery is discharged

CHARGING NOTES

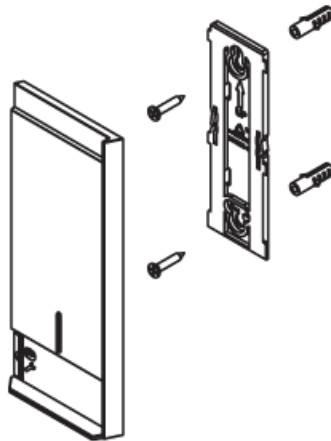
Charge your motor for 6-8 hours, depending on the motor model, as per motor instructions

During operation, if battery is low, the motor will beep 10 times to prompt the user it needs charging.

PI LOCATIONS**BUTTON OVERVIEW**



WALL MOUNTING



Use supplied fasteners and anchors to attach the base to wall.

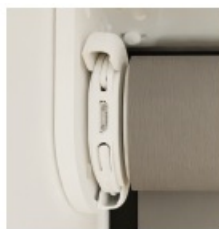
HOW TO CHARGE LI-ION ZERO WIRE-FREE MOTOR

1. STEP 1

Rotate cover cap to expose motor lead

2. STEP 2

Find nearest power source and plug-in charger use an extension cord if required)

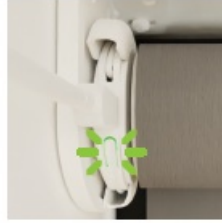


3. STEP 3

Plug micro USB end into the mot

- Observe the green light flashing and charge until the green light goes solid green
- Please note this may take up to eight hours depending on how flat your battery is

- Any mobile phone charger can also be used to charge your motor

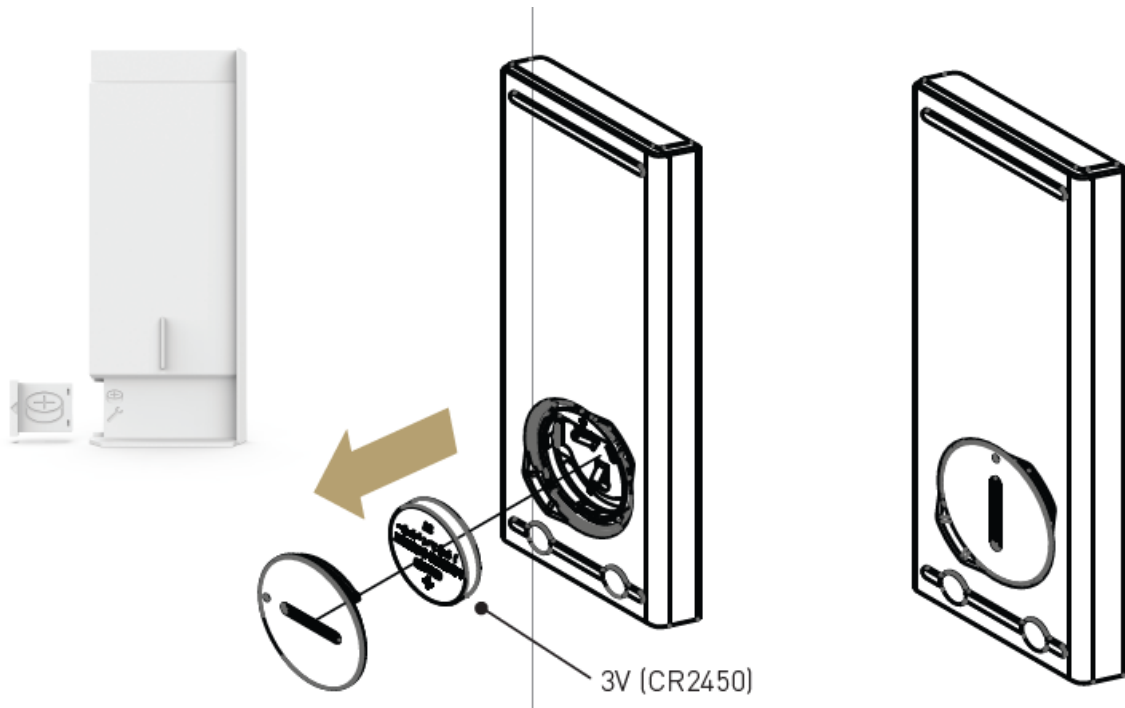


4. STEP 4

Unplug and return cover cap to co control motor head



REPLACE BATTERY

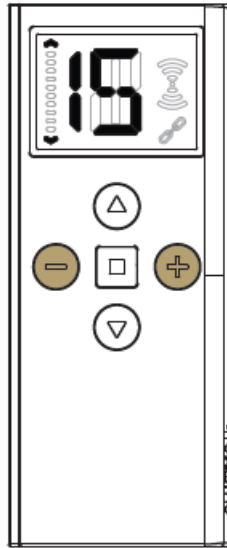


- Twist the battery cover with coin/tool provided in the cradle. to Unlock and replace the battery negative side facing up.
- Replace the cover by turning the cover to the locked position

This setup wizard should be used for new installation or factory reset motors only. Individual steps may not work if you haven't followed the setup from the beginning.

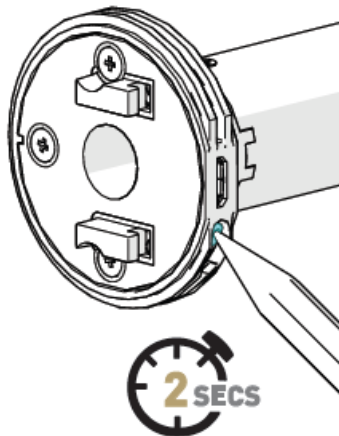
ON REMOTE

STEP1



Select the desired channel you wish to program by scrolling using the (+) or (-) Buttons.

STEP 2.



* Internal Tubular Motor pictured.
Refer to "P1 Locations" for specific devices

Press the **P1 button** on the motor for **2 Seconds** until the motor responds as below



Motor response

Within 4 seconds hold the stop button on the remote for 3 seconds. The motor will respond with Jog and Beep

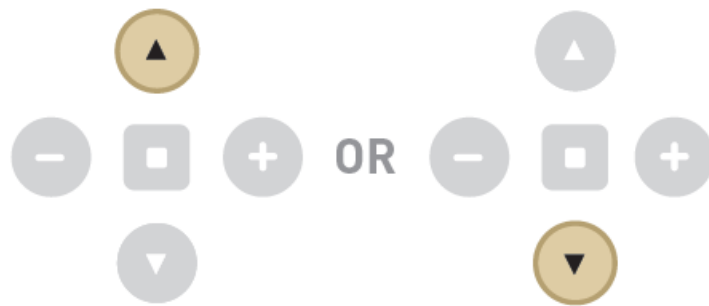
MOTOR RESPONSE



CHECK DIRECTION

STEP 3-

Press up or down to check the motor direction. If correct skip to step 5.



CHANGE DIRECTION

STEP 4.

If the shade direction needs to be reversed; press and hold the up & down arrow together for 5 seconds until the motor Jogs.



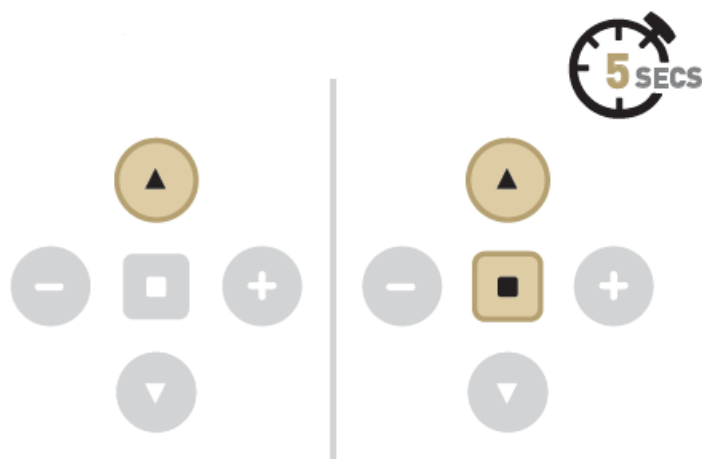
MOTOR RESPONSE



Reversing motor direction using this method is only possible during initial set-up.

SET-TOP LIMIT

STEP 5.



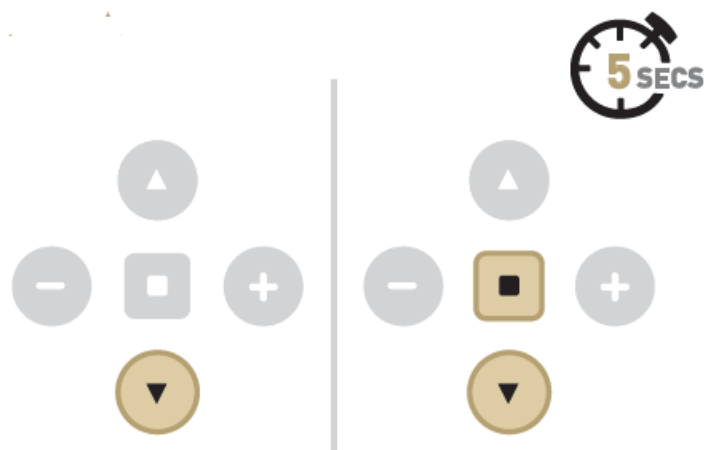
Move shade to desired top limit by pressing the up arrow repeatedly. Then press and hold up & stop together for 5 sec to save limit.

Tap the arrow several times or hold down if needed; press arrow to stop.

MOTOR RESPONSE



STEP 6.



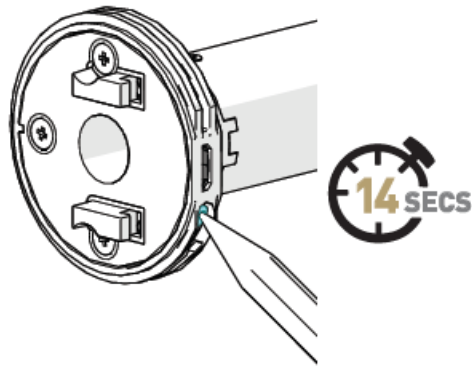
- Move shade to desired bottom limit by pressing the down arrow repeatedly. Then press and hold down & stop together for 5 sec to save limit.
- Tap the arrow several times or hold down if needed; press arrow to stop.

MOTOR RESPONSE



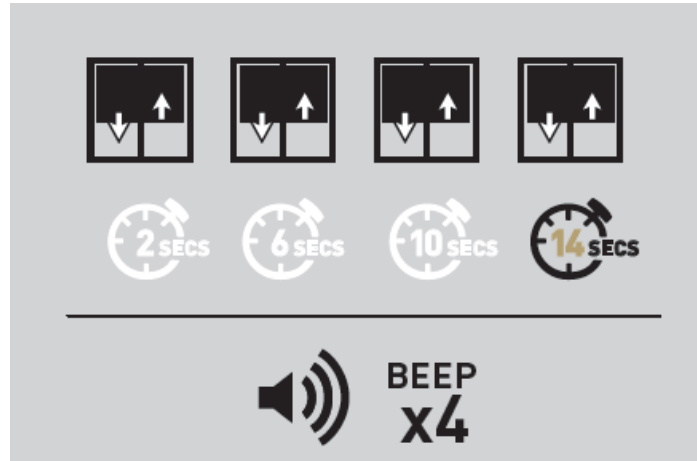
FACTORY RESET

To reset all settings in the motor press and hold the PI Button for 14 seconds, you should see 4 independent jogs followed by 4x Beeps at the end.

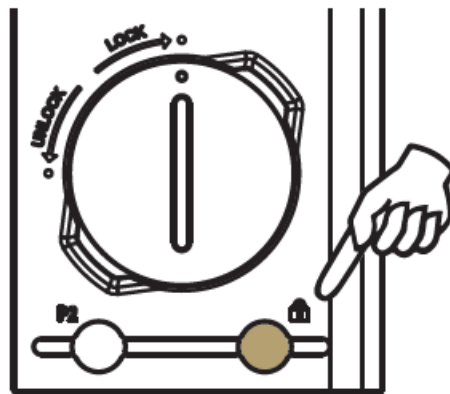


Internal Tubular Motor pictured above. Refer to “P1 Locations” for specific devices

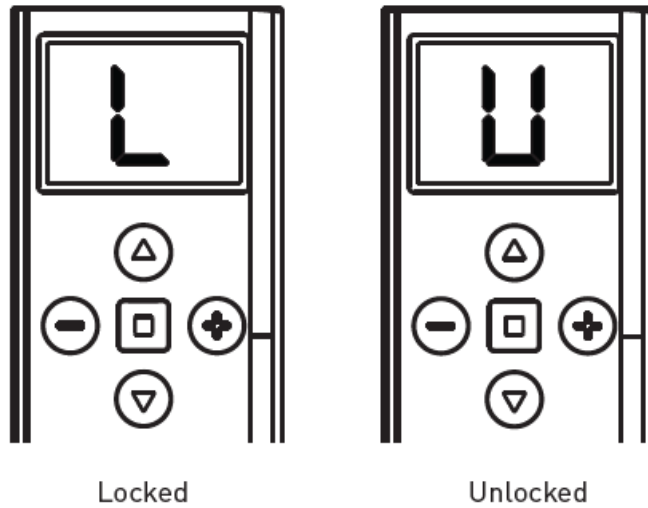
MOTOR RESPONSE



REMOTE STATE

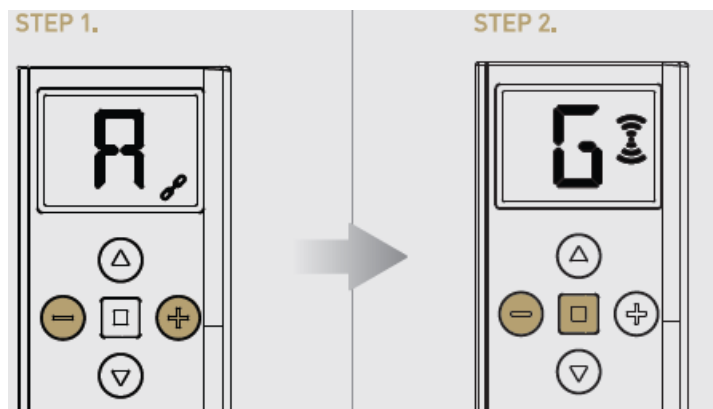


- Refer to DISABLE LIMIT SETTINGS for further details
- Pressing the lock button will display the state of the remote.

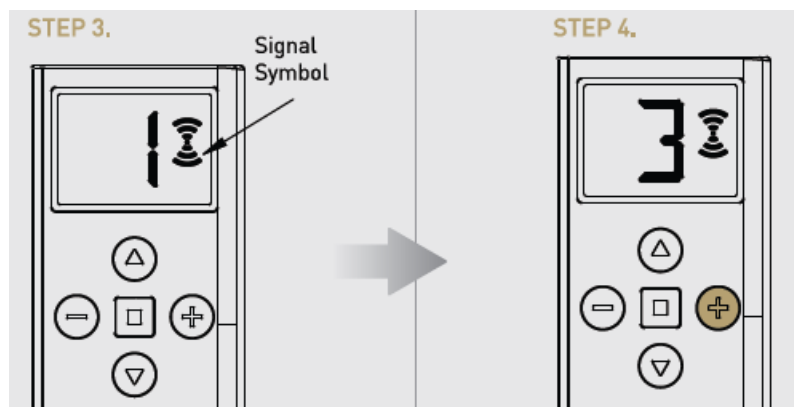


GROUP PROGRAMMING

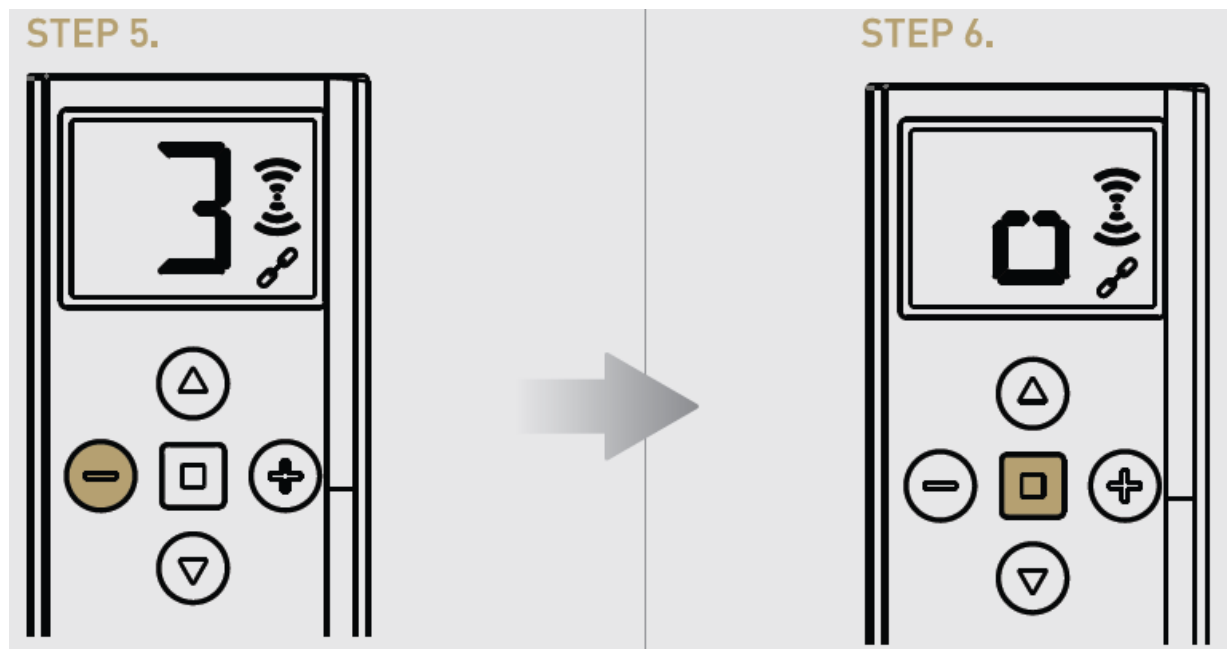
It is possible to add Individual Channels 11- 51 to create Custom Groups 1A-E)



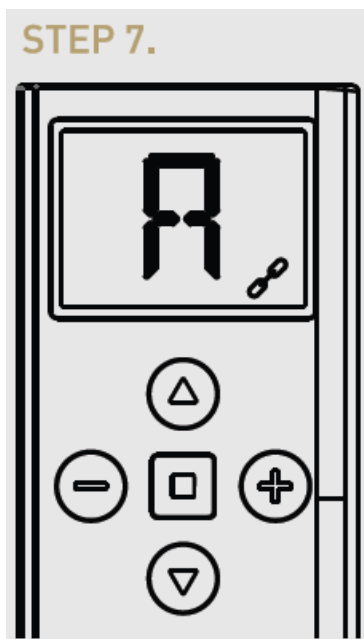
1. Cycle past Channel 1-15 and Select a Group to program from A- E.
2. Hold and STOP buttons for seconds. During this time “G” will be displayed. Select a Group from A – E to program. If no buttons are pressed for 90 seconds the remote will exit out of this mode



3. Remote is now in Group Programming Mode. Signal Symbol will be shown and Individual Channel “1” will be displayed.
4. use 1+1 button to cycle to desired Individual Channel you want to add to that group [Channel 3 used as an example] Note: Only (+) button can be used to cycle through channels
DO NOT USE BUTTOM TO SELECT A CHANNEL

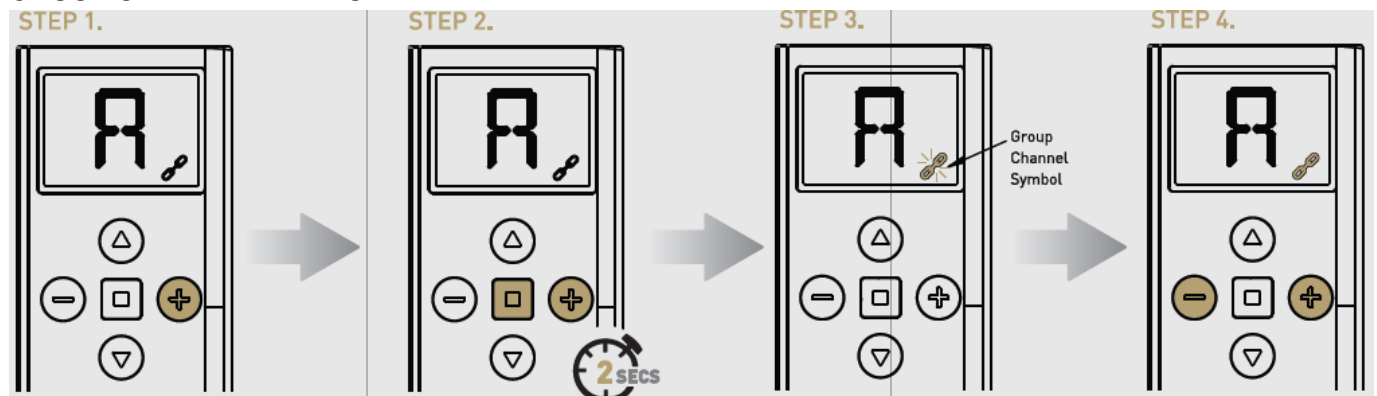


5. use I-I button to toggle on/off the inclusion into the Group Channel Note Group Channel Indicator Will be shown to indicate Channel is added
6. Once desired Individual Channels have been added, press the STOP button to confirm changes. The screen above Will be shown for seconds



7. The remote has now returned to Normal Mode. The Group Channel is ready to use

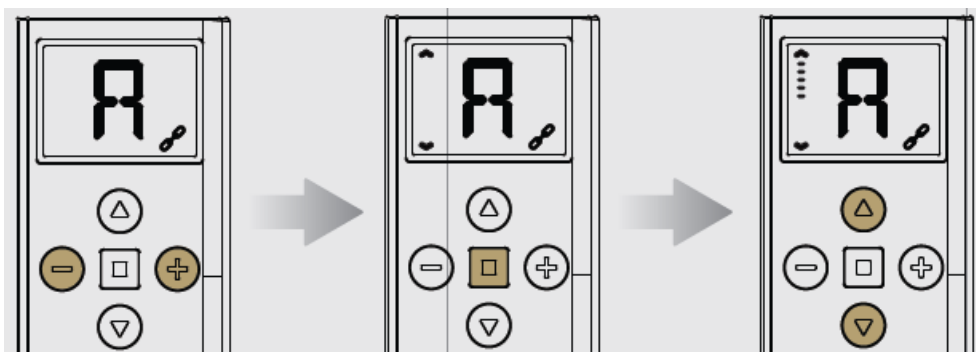
GROUP CHANNELVIEW MODE



1. Cycle past Channel 1-15 and Select a Group Channel A-E to view

2. Once you are on the Groups Channels that you would like to view Hold 1+1 and STOP buttons for 2 seconds
3. Remote is now in Group Channel Viewing Mode. Linked Symbol will flash and added Individual Channels will be displayed
4. Use (+) and (-) buttons to scroll included channels.

LEVELING CONTROL FUNCTION

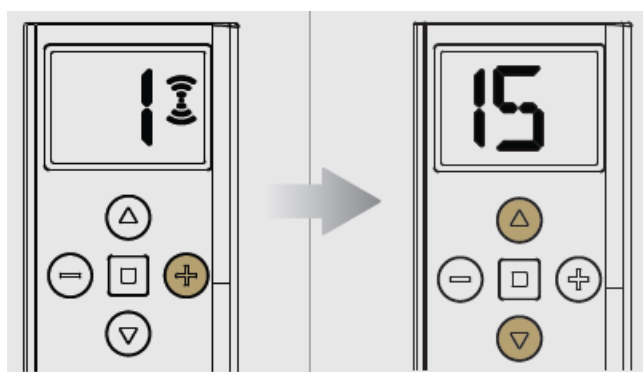


- Select the desired Channel or Group you would like to control.
- Double tap the stop button to enter level control mode

Note: sidebar arrows appear

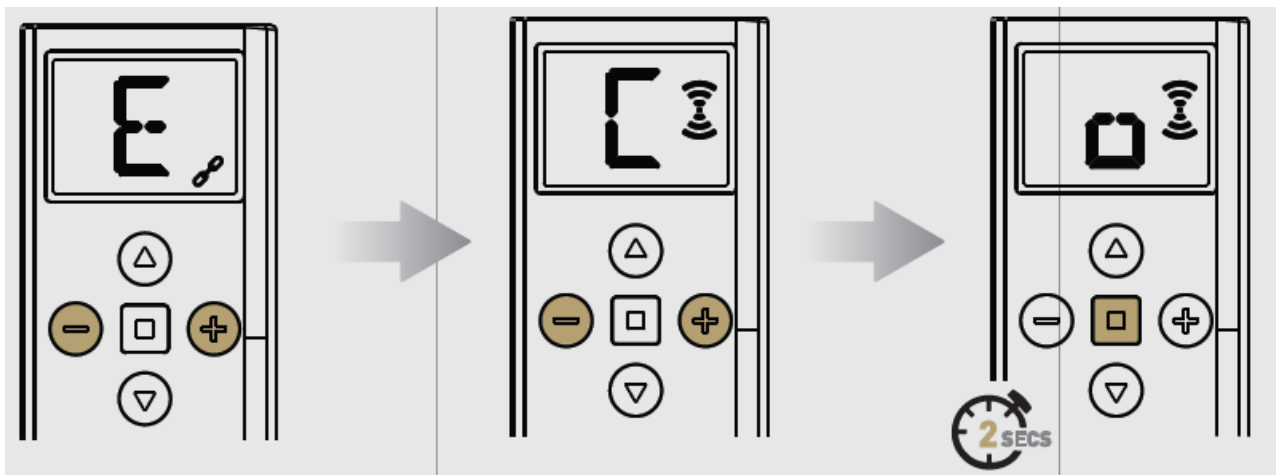
- Now Press (UP) or (DOWN) to set the desired shade percentage. After 2 seconds the shade/s will move to the desired position.

CHANNEL OR GROUP SELECTION



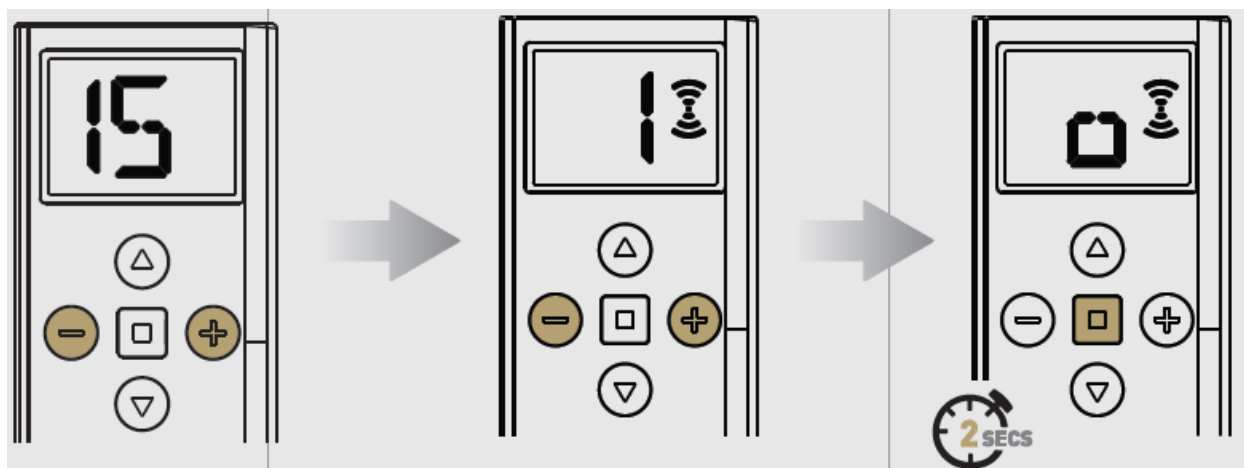
- Press (+) to Cycle through Channels or groups.
- Once you selected the desired channel or group, press (UP) or (DOWN) Buttons to control the shade.

HIDE GROUPS



- Hold (+) and (-) buttons for 5 seconds until “E” is displayed.
- Select (+) or (-) to scroll to the group that you want to hide.
Note: All groups above the selected group inclusively will be hidden.
- Press and hold STOP to confirm. The letter will be displayed.

HIDE CHANNELS

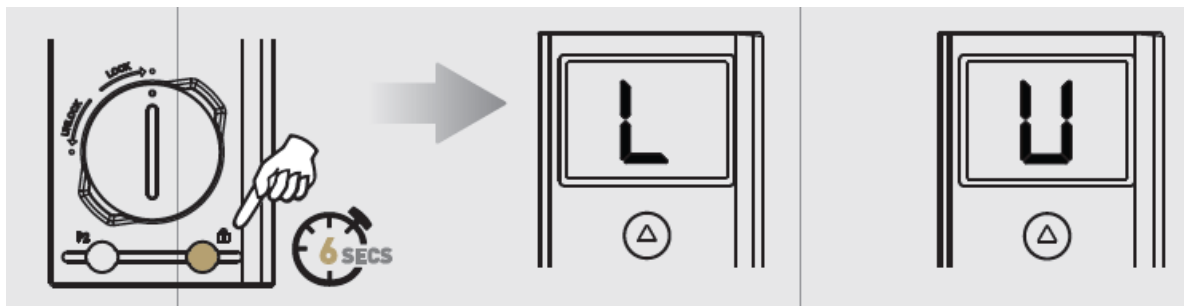


- Hold 1+1 and buttons for 5 seconds until “15” is displayed.
- Select (+) or (-) and scroll through all channels that you want to hide.
Note: All channels above the selected channel inclusively will be hidden.
- Press and hold STOP to confirm. The letter “o” will be displayed.

DISABLE LIMIT SETTING – LOCK BUTTON

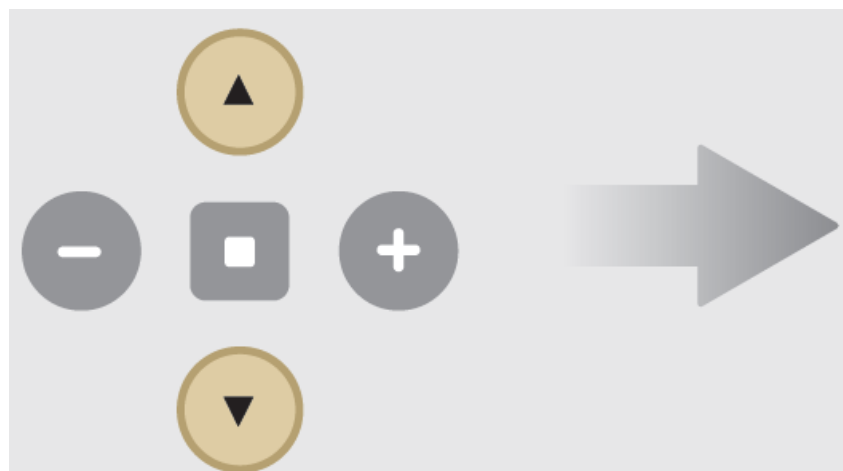
Note: Ensure all shade programming for all motors is completed before locking the remote.

User mode will prevent accidental or unintended changing of limits.



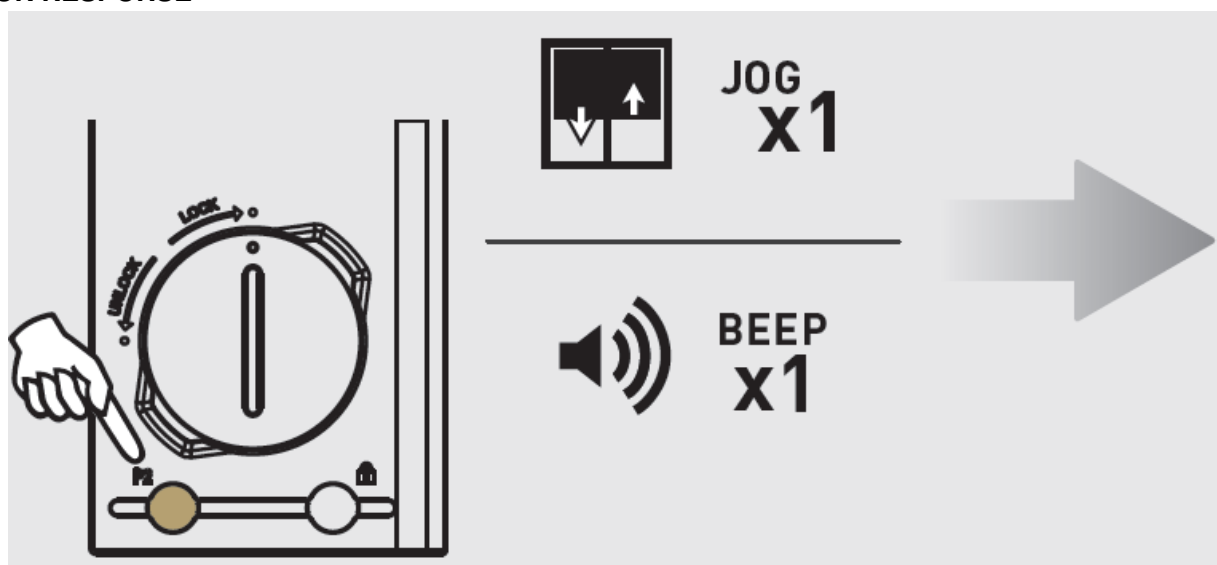
- To lock the remote, press and hold the Lock Button for 6 seconds. (The letter “L” will be displayed).
- To Unlock the remote, press and hold the Lock Button again for 6 (The letter “U” will be displayed).

SET A FAVORITE POSITION



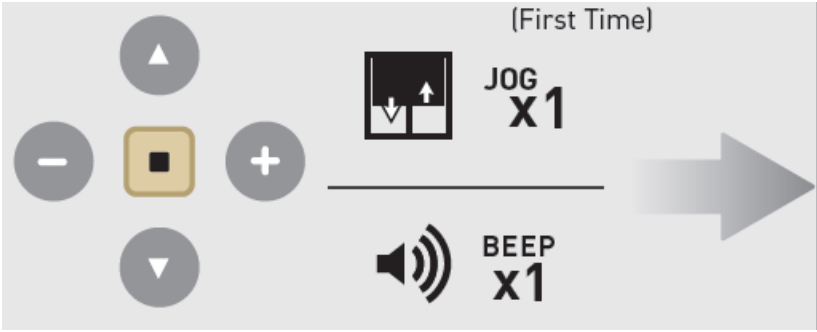
- Move shade to desired position by pressing UP or DOWN on the remote.

MOTOR RESPONSE



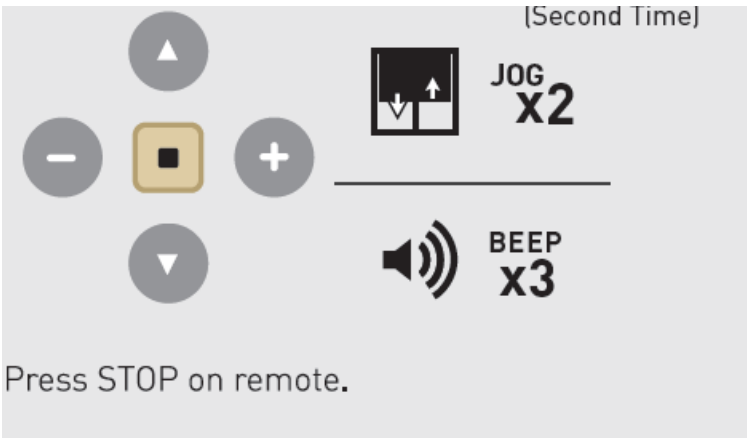
- Press P2 on controller.

MOTOR RESPONSE



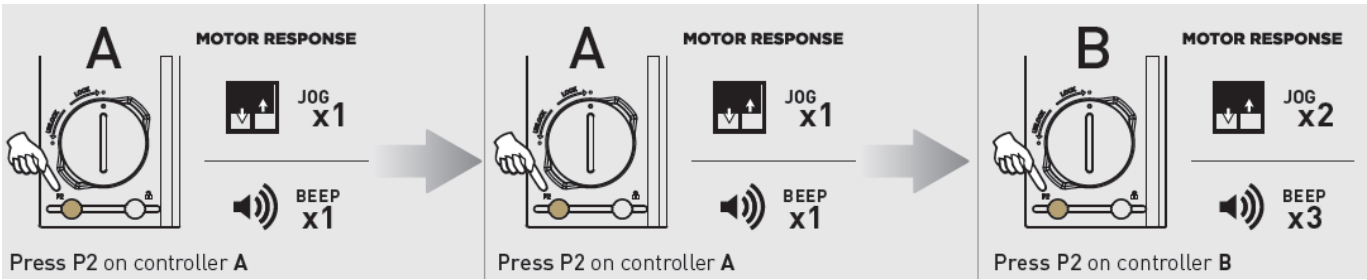
- Press STOP on remote.

MOTOR RESPONSE



- Press STOP on remote.

ADD OR DELETE CONTROLLER OR CHANNEL



Documents / Resources

[AUTOMATE MT02-0101 Push 15 Channel Remote Control](#) [pdf] User Guide
MT02-0101, MT02-0101 Push 15 Channel Remote Control, Push 15 Channel Remote Control, 15 Channel Remote Control, Remote Control, Control

References

- [User Manual](#)

